

Liberty

User Manual

FCC ID:2AOKB-Z2001 IC: 23451-Z2001

Anker Innovations Limited
Room 1318-19, Hollywood Plaza, 610 Nathan Road, Mongkok, Kowloon,
Hongkong

EN Charging

Fully charge the earbuds along with the charging case before the first use. Please check battery level and charging status as indicated left.

Pairing with Your Device

- ① Open the charging case and take the earbuds out, ZOLO Liberty turns on automatically.
- ② Enable Bluetooth® on your device and select "ZOLO Liberty". You will hear the pairing chime once connected.

Note: The earbuds turn off automatically when you put them back in the charging case. To manually turn the power on, press and hold the earbud button for 1 second. To manually turn the power off, press and hold the earbud button for 5 seconds.

Wearing

- If the GripFit™ Jackets don't fit your ears, Liberty can be used without a jacket.

Controls

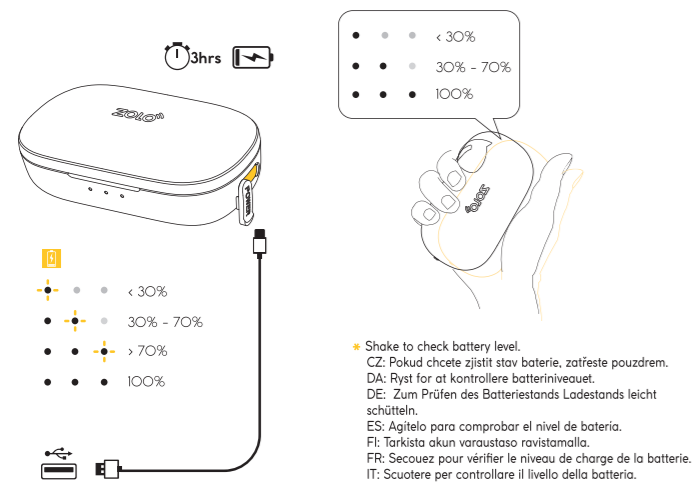
Tap to answer / end a call or pause / resume music.
Long press for 1 second to skip to previous track (L) / next track (R).
Long press for 1 second to reject a call, to transfer a call between earbuds and phone, or to switch between held call and active call.
Double tap to activate Siri or other voice assistant.
Control volume by adjusting the volume on the connected Bluetooth device.

Reset

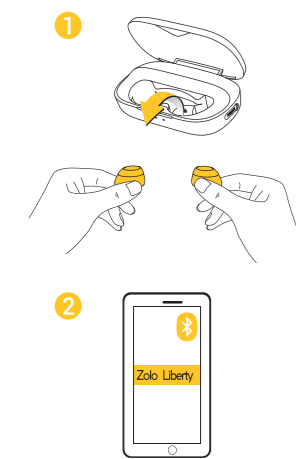
How to reset the earbuds if you can only hear one side:

- ① Take the earbuds out of the charging case, press and hold the earbud button on both earbuds for 5 seconds until the LED indicator flashes red.
- ② Press and hold the earbud button again for about 8 seconds until the LED indicator turns pink.
- ③ Put the earbuds back to the charging case then take them out again. The right earbud will automatically connect to the left earbud.
- ④ Open the Bluetooth list on your device, delete "Zolo Liberty", then connect again.

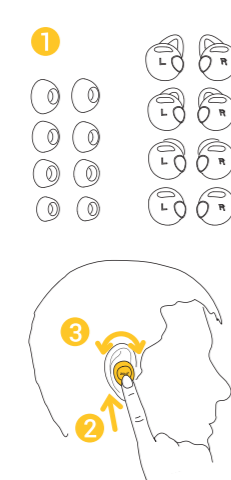
Charging



Pairing



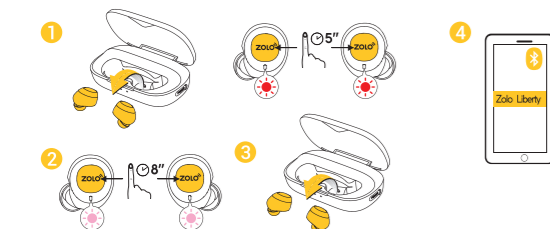
Wearing



Controls



Reset





@ZoloAudio



@ZoloAudio



service@zoloaudio.com



+1 (800) 988 7973 (US) Mon-Fri 9:00 - 17:00 (PT)
 +44 (0) 1604 936200 (UK) Mon-Fri 6:00 - 11:00 (GMT)
 +49 (0) 69 9579 7960 (DE) Mon-Fri 6:00 - 11:00
 +86 400 0550 036 (中国) 周一至周五 9:00 - 17:30
 +81 03 4455 7823 (日本) 月 - 金 9:00 - 17:00

© Anker Innovations. All rights reserved.
 ZOLO and the ZOLO logo are trademarks of
 Anker Innovations, registered in the United States
 and other countries. Model: Z2001

5100500xxxx VO2

ZOLO[®]

Important Safety Information

- Avoid dropping.
- Do not disassemble.
- Do not submerge in water.
- The product shall not be exposed to dripping or splash.
- Avoid extreme temperatures.
- The product shall not be exposed to excessive heat such as sunshine, fire or the like.
- Use original or certified cables.
- Clean with a dry, soft lint-free cloth. Do not use any corrosive cleaner or oil.
- Do not use the product outdoors during thunderstorms.
- Keep out of reach of children. Small parts included may be a choking hazard.
- Ensure there is no liquid, sweat or water at the charging port when charging.



Hearing Safety

- To avoid hearing damage, do not listen for extended periods at high volume.
- Do not turn the volume so high that you're unable to hear your surroundings.
- Do not use earphones while driving.
- You should use caution or temporarily discontinue use in potentially hazardous situations.

Notice



Declaration of Conformity

This product complies with the radio interference requirements of the European Community. Hereby, Anker Innovations Limited declares that the radio equipment type Z2001 is in compliance with Directive 2014/53/EU. The full text of the EU declaration of conformity is available at the following internet address: <https://zoloaudio.com>
Maximum output power: 2.8 dBm
Frequency band: 2.4G band (2.4000GHz-2.4835GHz)

CAUTION RISK OF EXPLOSION IF BATTERY IS REPLACED BY AN INCORRECT TYPE.
DISPOSE OF USED BATTERIES ACCORDING TO THE INSTRUCTIONS



This symbol means the product must not be discarded as household waste, and should be delivered to an appropriate collection facility for recycling. Follow local rules and never dispose of the product and rechargeable batteries with normal household waste. Correct disposal of old products and rechargeable batteries helps prevent negative consequences for the environment and human health.

FCC Statement

This device complies with Part 15 of the FCC Rules. Operation is subject to the following two conditions: (1) This device may not cause harmful interference, and (2) This device must accept any interference received, including interference that may cause undesired operation.

Warning: Changes or modifications not expressly approved by the party responsible for compliance could void the user's authority to operate the equipment.

Note: This equipment has been tested and found to comply with the limits for a Class B digital device, pursuant to Part 15 of the FCC Rules. These limits are designed to provide reasonable protection against harmful interference in a residential installation.

This equipment generates, uses and can radiate radio frequency energy and, if not installed and used in accordance with the instructions, may cause harmful interference to radio communications. However, there is no guarantee that interference will not occur in a particular installation. If this equipment does cause harmful interference to radio or television reception, which can be determined by turning the equipment off and on, the user is encouraged to try to correct the interference by one or more of the following measures:

(1) Reorient or relocate the receiving antenna. (2) Increase the separation between the equipment and receiver. (3) Connect the equipment into an outlet on a circuit different from that to which the receiver is connected. (4) Consult the dealer or an experienced radio/TV technician for help.

RF Warning Statement

The device has been evaluated to meet general RF exposure requirements. The device can be used in portable exposure conditions without restriction.

The following importer is the responsible party

Company Name: Fantasia Trading LLC

Address: 9155 Archibald Avenue, Suite 202, Rancho Cucamonga, CA, 91730, US

Telephone: +1 (909) 484 1530

Trademark



The Bluetooth® word mark and logos are registered trademarks owned by the Bluetooth SIG, Inc. and any use of such marks by Anker Innovations Limited, is under license.

Other trademarks and trade names are those of their respective owners.

IC NOTICE TO CANADIAN USERS

This device complies with Industry Canada license-exempt RSS standard(s). Operation is subject to the following two conditions: (1) This device may not cause interference, and (2) This device must accept any interference, including interference that may cause undesired operation of the device. This device complies with RSS-247 of Industry Canada. Operation is subject to the condition that this device does not cause harmful interference. This Class B digital apparatus complies with Canadian ICES-003 (Cet appareil numérique de la Classe B conforme à la norme NMB-003 du Canada).

Le présent appareil est conforme aux CNR d'Industrie Canada applicables aux appareils radio exempts de licence. L'exploitation est autorisée aux deux conditions suivantes : (1) l'appareil ne doit pas produire de brouillage, et (2) l'utilisateur de l'appareil doit accepter tout brouillage radioélectrique subi, même si le brouillage est susceptible d'en compromettre le fonctionnement.

CAN ICES-3(B) / NMB-3(B)

Customer Service



12-Month Limited Warranty



Lifetime Technical Support

• Additional Legal Rights for Consumers

For consumers, who are covered by consumer protection laws or regulations in their country of purchase or, if different, their country of residence, the benefits conferred by Zolo's Limited Warranty are in addition to all rights and remedies conveyed by such consumer protection laws and regulations, including but not limited to these additional rights.

For FAQs and more information, please visit <https://zoloaudio.com>.

Specifications

• Specifications are subject to change without notice.

Input	5 V \pm 1.5 A
Impedance	16 Ω
Dynamic driver	5.6 mm x 2
Frequency response	20 Hz - 20 KHz
Bluetooth version	V5.0
Bluetooth range	\geq 10 m / 33 ft
Play time	5 hours (per charge); 40 hours (with charging case's support)
Charging time	1.5 hours (earbuds); 2.5-3 hours (charging case)
Waterproof	IPX5 (earbuds); IPX3 (charging case)
Weight	103 g / 3.6 oz

安全に関する重要情報

- ・ 過度な衝撃を与えないでください。
- ・ 危険ですので分解しないでください。
- ・ 水に沈めないでください。
- ・ 水滴や飛沫がかからないようにしてください。
- ・ 極端な温度下では使用しないでください。
- ・ 直射日光や火などにさらさないようにし、熱を持たないようにしてください。
- ・ 純正または認証されたケーブルをご使用ください。
- ・ お手入れ時は、糸くずの出ない柔らかく乾いた布で拭いてください。腐食性の高い洗浄液やオイルは使用しないでください。
- ・ 雷雨など天候が非常に悪い時は、屋外での使用を控えてください。
- ・ お子様が悪く飲み込んでしまうと危険ですので、お子様の手の届かないところに保管してください。
- ・ 充電時に、充電ポートが汗、水などで濡れていないことを確認してください。



再生時の安全性

- ・ 聴覚障害を避けるため、長時間、大きな音量で聴かないでください。
- ・ 周囲の音が聞こえないほど音量を大きくしないでください。
- ・ 運転中にイヤホンを使用しないでください。
- ・ 潜在的に危険がある状況では、慎重に使用するか、一時的に使用を中止する必要があります。

仕様

*仕様は予告なく変更されることがあります。

入力	5 V \pm 1.5 A
インピーダンス	16 Ω
ダイナミックドライバ	5.6 mm x 2
周波数応答	20 Hz - 20 KHz
Bluetooth バージョン	V 5.0
Bluetooth 対応範囲	\geq 10 m / 33 ft
再生時間	5 時間 (1 回の充電につき) ; 40 時間 (充電ケースの使用時)
充電時間	1.5 時間 (イヤホン) ; 2.5 ~ 3 時間 (充電ケース)
防水	IPX5 (イヤホン) ; IPX3 (充電ケース)
重量	103 g

カスタマサービス



12 ヶ月限定保証



ライフタイムテクニカルサポート

*消費者のための追加的な法的権利

購入国、または居住国の消費者保護法または規制が適用される消費者は、消費者保護法、規制などで認められるあらゆる権利と解決策に加えて、Zolo の限定保証で認められた保証が受けられます。また認められる権利は、これらの追加的な権利に限定されません。

よくある質問や詳細については、<https://zoloaudio.com> をご覧ください。

중요한 안전 정보

- 떨어뜨리지 마십시오.
- 분해하지 마십시오.
- 물에 빠뜨리지 마십시오.
- 제품을 물이 떨어지거나 튀는 곳에 두지 마십시오.
- 너무 높거나 낮은 기온에 노출시키지 마십시오.
- 이 제품은 햇빛, 불 등 과도한 열에 노출시키지 마십시오.
- 원래 케이블 또는 인증된 케이블 사용.
- 부드럽고 보푸라기가 없는 마른 천으로 닦으십시오. 부식성 세척제나 오일은 사용하지 마십시오.
- 야외에서 뇌우가 내릴 때는 이 제품을 사용하지 마십시오.
- 어린이의 손이 닿지 않는 곳에 보관하십시오. 포함된 작은 부품으로 인해 질식할 위험이 있습니다.
- 충전 시 충전 포트에 액체, 땀 또는 물이 없는지 확인하십시오.



청각 안전

- 청각 손상을 방지하려면 높은 볼륨으로 장시간 듣지 마십시오.
- 주변 소리가 들리지 않을 정도로 볼륨을 높이지 마십시오.
- 운전 중에는 이어폰을 사용하지 마십시오.
- 위험할 수 있는 상황에서는 주의하거나 잠시 사용을 중단해야 합니다.

사양

* 사양은 사전 통지 없이 변경될 수 있습니다.

입력	5 V \pm 1.5 A
임피던스	16 Ω
동적 드라이버	5.6 mm x 2
주파수 응답	20 Hz - 20 KHz
Bluetooth 버전	V 5.0
Bluetooth 범위	\geq 10 m / 33 ft
사용 시간	5 시간 (충전 1 회당); 40 시간 (충전 케이스 사용 시)
충전 시간	1.5 시간 (이어버드); 2.5 - 3 시간 (충전 케이스)
방수	IPX5 (이어버드); IPX3 (충전 케이스)
무게	103 g

고객 서비스



12 개월 제한 보증



평생 기술 지원

* 추가적인 소비자의 법적 권리

제품을 구입한 국가의 소비자보호법이나 규정의 보호를 받는 소비자의 경우 거주 국가가 다른 경우에도 해당 소비자보호법 및 규정에 해당하는 모든 권한과 구제 방법 외에 Zolo 의 제한 보증에서 제공하는 혜택이 추가로 제공되며, 이러한 추가 권한에만 국한되지 않습니다 .

FAQ 및 자세한 내용은 <https://zoloaudio.com> 을 방문하십시오 .



당해 무선설비는 전파혼신 가능성이 있으므로 인명안전과 관련된 서비스는 할 수 없음

重要安全信息

- 避免掉落。
- 请勿拆卸。
- 请勿浸入水中。
- 请勿将本产品暴露在滴水或溅水中。
- 避免极端高温或低温。
- 请勿将本产品暴露在太阳光、火等类似的过热温度环境中。
- 使用原装或者通过认证的线材。
- 使用干燥柔软的无绒布清洁。请勿使用腐蚀性的清洁剂或油。
- 雷暴天气期间，请勿在户外使用本产品。
- 远离儿童。随附的小部件可能会引发窒息危险。
- 充电时请确保充电接口处没有液体、汗液或水。



听力安全

- 若要避免听力损伤，请勿高音量倾听过长时间。
- 请勿将音量开得太高，避免导致您无法听到周围的声音。
- 驾驶期间，请勿使用耳机。
- 在有潜在危险的情况下，您应谨慎小心或暂时暂停使用。

规格

* 规格如有变更，恕不另行通知。

输入	5 V $\bar{\text{~}}$ 1.5 A
阻抗	16 Ω
动态驱动	5.6 mm x 2
频响	20 Hz - 20 KHz
蓝牙版本	V 5.0
蓝牙范围	\geq 10 m / 33 ft
播放时间	5 小时（每次充电）； 40 小时（支持充电盒）
充电时间	1.5 小时（耳机）； 2.5 - 3 小时（充电箱）
防水	IPX5（耳机）； IPX3（充电箱）
重量	103 克

客户服务



有限保修 12 个月



终身技术支持

* 消费者的附加法律权利

消费者受产品购买国 / 地区相关消费者保护法或法规保护，或受其居住国 / 地区相关消费者保护法或法规保护（若不同）的，其不仅可以享有该等消费者保护法及法规赋予的所有权利及救济，包括但不限于这些附加权利，还能享有 Zolo 有限保修所提供的各项权益。

欲查看常见问题及了解详情，请访问 <https://zoloaudio.com>。