

Safety Instructions

Please read and understand all instructions before using this product. If damage is caused by failure to follow the instructions, the warranty does not apply.

- Keep these instructions.
- Do not drop, puncture or disassemble this product.
- This product shall not be exposed to dripping or splashing.
- Avoid long exposure to direct sunlight, which may cause damage.
- Exposing this product to open flames may cause explosion.
- Use original accessories only.
- Do not install this product where it will block the driver's view of the road or the deployment of the airbag.
- Keep your attention on the road. Do not operate the controls of this product while driving.
- Ensure the camera lens is kept clean and there is nothing blocking the lens.
- Setup time and date accurately before using this product.
- Do not use the charger if the cord is damaged or broken.
- Remove this product from your vehicle when not in use for a long period.
- Keep out of reach of children.
- Use clean, soft cloth to clean. Do not use any corrosive cleaner/oil to clean.
- The Company is NOT responsible for the loss of any data/content during operation.

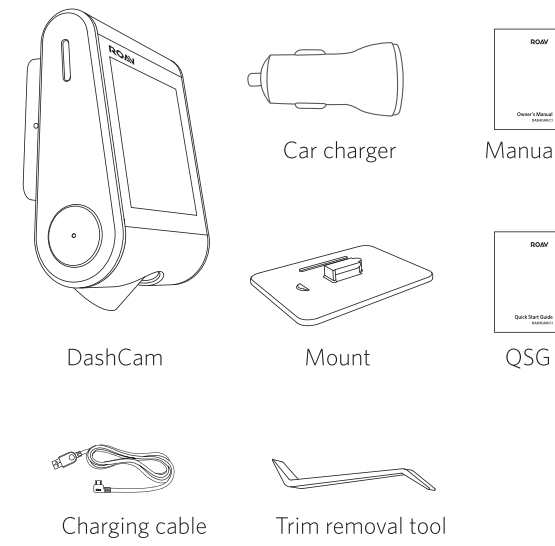
Introduction

Thank you for choosing Roav DashCam. This product is specifically designed for real time video and audio recording while driving. To get the most out of it, please read all of the information in this manual.

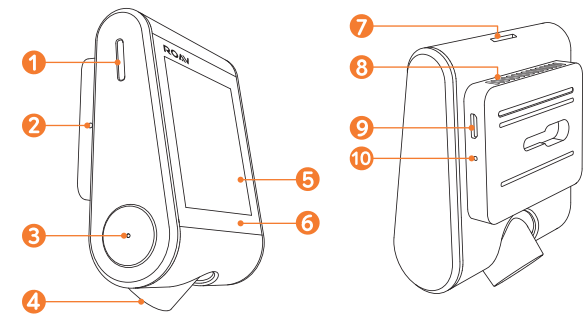
Features

- Continuous loop recording
- Full HD camera (1080p @ 30fps)
- 2.4" LCD color screen (320 x 240)
- 145° wide angle lens
- Rotatory camera lens
- Motion detection
- Automatic emergency recording for collision detection
- Automatic or manual file locking
- Support microSD / TF card up to 32G
- 24 hours parking guard
- Auto-record and auto-power off
- Customizable watermark
- Support your own language

What's Included



At a Glance



- 1 Speaker
- 2 Microphone
- 3 Power button with LED indicator
 - Red: recording in progress
 - Green: no recording status
- 4 Camera lens
- 5 LCD screen
- 6 Touch buttons
- 7 Memory card slot
- 8 Air vent
- 9 Micro USB charging port
- 10 Reset slot

Inserting Memory Card

Do not remove or insert microSD / TF card when this product is powered on, which may damage the card.

For reliable operation, use a Class 10 microSD / TF card with a capacity of 8GB, 16GB or 32GB.

Card Capacity	1080P 30FPS	720P 60FPS	720P 30FPS
8 GB	80 min	90 min	120 min
16 GB	160 min	180 min	240 min
32 GB	320 min	360 min	480 min

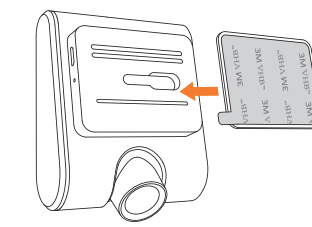
- 1 Insert a microSD / TF card with the gold contacts facing the screen side of the DashCam. Push the card until it clicks into place.
- 2 To remove the microSD / TF card, gently push its top edge inward until it clicks, and then pull it out of the slot.

- For a 64GB / 128GB card, use a computer to format it with FAT32 file system before using.
- It is recommended to format the card regularly.

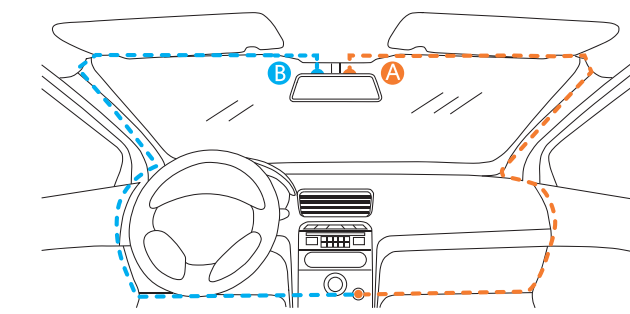
Installing Your DashCam

- Never install this product while driving.
- Install this product near the rear-view mirror to obtain the best open-field view. Do not install in a location that will obstruct your required driving view.
- Make sure that the lens is within the wiping range of the windshield wiper to ensure a clear view even when it rains.
- Do not touch the lens with your fingers. Finger grease may be left on the lens and will result in unclear videos.
- The mount is adhesive and may be destroyed if it is removed from the windshield.

- 1 Attach the DashCam onto the mount.

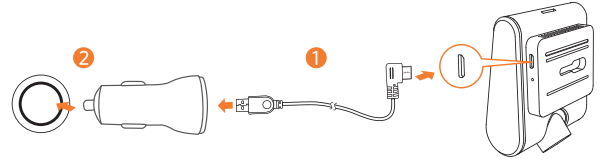


- 2 Select a location (A or B) on the windshield rear of the rear-view mirror.
- 3 Remove 3M adhesive sticker and firmly affix the mount onto the windshield.
- 4 Use the trim removal tool to press and hide the charging cable into the seams and weatherstripping around the edge of the dashboard.
- 5 Adjust the lens viewing angle to ensure that it is aligned with the road ahead.



Connecting to Power

- 1 Connect the car charger and DashCam by using the charging cable.
- 2 Plug the other end of the car charger to your vehicle's cigarette lighter socket.



- 3 Once the car engine is started, DashCam will automatically power on and start recording. Once the car engine is shut down, DashCam automatically saves the recording and turns off within 30 seconds.

Manually turn on/off

- 1 To manually turn on, press the power button.
- 2 To manually turn off, press and hold the power button for at least 2 seconds.

Downloading Roav App

Search "Roav" in App Store or Google Play to Download.



Apple and the Apple logo are trademarks of Apple Inc.

Google Play and the Google Play logo are trademarks of Google Inc.

Connect DashCam with Smartphone

With successful connection with your smartphone via built-in Wi-Fi, you can save and playback the driving recording videos on your smartphone.

- When successfully connected, DashCam stops recording.
- Android phones cannot access internet data while connected to DashCam's Wi-Fi. iOS devices should still function normally.

- 1 On your Smartphone: Select "Settings" > "Wi-Fi".
- 2 Find "Roav DashCam C1" on the list and connect it, enter password (initial password: gorovacm).
- 3 Follow the instructions on your smartphone to complete the connection.

Using Your DashCam

- As a driver, you have full responsibility to drive safely and adhere to all applicable traffic regulations.

Record Videos

- 1 When connected to a car charger, DashCam automatically starts recording. [REDACTED] is displayed and red dot flashes on the screen, the current recording duration is displayed, and the current date and time is displayed.
- 2 To enable / disable the audio recording, tap [MUTE].

- Each recording video clip lasts 3 minutes.

Protect the Current Recording

By default, DashCam uses a sensor to automatically detect accidental collisions and protect the video file with duration of 30 seconds, and [LOCK] is displayed. This indicates that those recordings have been locked and will not be overwritten by new video clips.

To protect the current recording manually, tap [EMER].

Playback Videos

- The DashCam stops recording while viewing videos or settings.

- 1 Tap [FILE] to view all saved videos.
- 2 Select a video to playback.

Touch Button	Virtual Button	Mark
[OK]	[PLAY/PAUSE]	Play / Pause
[PLAY]	[DELETE]	Delete Current / Delete All
[LEFT]	[LOCK]	Lock Current / Unlock Current (while pause)
[HOME]	[BACK]	Back to previous menu

System Setup

To adjust DashCam's settings, tap [OK] (Menu).

Menu Options	Description	Available Options
Resolution	Set a desired video resolution.	720P 60FPS / 720P 30FPS / 1080P 30FPS
Frequency	Set video frequency range	50 Hz / 60 Hz
Sensitivity	Sensitivity for gravity	Low / Medium / High / Off
Parking Monitor	Enable to keep DashCam in standby mode. Motion will be detected for 15 times and DashCam starts recording a 30 second video each time.	On / Off
WIFI	Connect with smartphone	On / Off
Time	Set date and time	Tap [RIGHT] / [LEFT] to adjust the value, tap [OK] to next option, tap [HOME] to save

Language	Set on-screen display menu language	English / Deutsch / 日本語 / 简体中文 / 繁体中文 / Español / Italiano / Français
LCD Auto Off	Turn off the screen backlight after a period of inactivity	30 Seconds / 60 Seconds / Off
Machine Sound	Mute or unmute	On / Off
Default	Reset all options to the default settings	Cancel / OK
Format	Format the memory card and all the data will be deleted	Cancel / OK
Watermark	Display / hide the date and time on the recordings	On / Off
About	Check the current version number	

Touch Button	Virtual Button	Mark
[OK]	[CHECK]	Click repeatedly to select a setting Click to confirm a selection
[RIGHT]	[NEXT]	Toggle the next setting
[LEFT]	[PREV]	Toggle the previous setting
[HOME]	[BACK]	Back to recording mode

Specifications

- Specifications are subject to change without notice.

Screen: 2.4" LCD color TFT (320 x 240)
 Camera sensor: Sony Exmor IMX 323
 Camera lens: wide-angle lens 145°
 Chipset: Novatek NT96658
 Power input: 5V 1A
 Max video resolution: 1080P 30FPS (1920x1080)
 Video clip format: .MOV
 Wi-Fi: 2.4GHz Band
 Battery capacity: 470mAh
 Charging cable length: 3.2 m
 Operating temperature range: 14°F to 149°F
 Storage temperature range: -20°F to 160°F
 Weight: Approx. 4.2 oz
 Size: 3.4" x 2.6" x 1.4 in

FAQ

- 1 Can not record?
 - Check if the memory card is inserted properly and there is enough free capacity.
 - Check the battery level.
- 2 Blurred image?
 - Use a clean, soft lens-cleaning cloth to gently clean the lens.
- 3 Malfunction or crash?
 - Press and hold the Reset slot by using a sharp pin for at least 2 seconds.
- 4 Blank screen?
 - The screen saver is activated. Change settings to "Off" if required.
- 5 Fail to view and playback videos on your smartphone?
 - Check on your smartphone if Wi-Fi is successfully connected to the DashCam.
- 6 How to enable parking monitor?
 - Tap [OK] (Menu), select "Parking Monitor" > "On".
- 7 Worry about the memory card is full?
 - Continuous loop recording allows to overwrite the old unlocked files.
- 8 Will my data be used when my smartphone is connected with DashCam?
 - No. Data will be used only if you share the saved videos via social apps.

Notice

- This product complies with the radio interference requirements of the European Community. Operating Frequency Range: 2400-2483.5 MHz ; Max Output Power: 15 dBm
- This product is designed and manufactured with high quality materials and components, which can be recycled and reused.
- This symbol means the product must not be discarded as household waste, and should be delivered to an appropriate collection facility for recycling. Proper disposal and recycling helps protect natural resources, human health and the environment. For more information on disposal and recycling of this product, contact your local municipality, disposal service, or the shop where you bought this product.

FCC Statement

This device complies with Part 15 of the FCC Rules. Operation is subject to the following two conditions: (1) This device may not cause harmful interference, and (2) This device must accept any interference received, including interference that may cause undesired operation.

Warning: Changes or modifications not expressly approved by the party responsible for compliance could void the user's authority to operate the equipment.

Note: This equipment has been tested and found to comply with the limits for a Class B digital device, pursuant to Part 15 of the FCC Rules. These limits are designed to provide reasonable protection against harmful interference in a residential installation.

This equipment generates, uses and can radiate radio frequency energy and, if not installed and used in accordance with the instructions, may cause harmful interference to radio communications. However, there is no guarantee that interference will not occur in a particular installation. If this equipment does cause harmful interference to radio or television reception, which can be determined by turning the equipment off and on, the user is encouraged to try to correct the interference by one or more of the following measures: (1) Reorient or relocate the receiving antenna. (2) Increase the separation between the equipment and receiver. (3) Connect the equipment into an outlet on a circuit different from that to which the receiver is connected. (4) Consult the dealer or an experienced radio / TV technician for help.

This device is acting as slave and operating in the 2.4 GHz (2412-2462 MHz).

FCC Radio Frequency Exposure Statement
 The device has been evaluated to meet general RF exposure requirements. The device can be used in fixed/mobile exposure condition. The min separation distance is 20cm.

"Android" is a registered trademark of Google Inc. in the United States and other countries.
 "iOS" is a registered trademark of Apple Inc. in the United States and other countries.

Customer Service

- 12-month limited warranty
- Lifetime technical support
- support@goroav.com
- 1-800-988-7973 (US) Mon-Fri 9am-5pm (PST)
- @GoRoav
- @GoRoav