

The ROAV logo is displayed in a bold, orange, sans-serif font. The letters 'O' and 'A' have a small dot above them. The logo is centered horizontally on the page.

ROAV

Model: R2220
51005000800 V01

The ROAV logo is displayed in white, bold, sans-serif font. The letters 'O' and 'A' have a small dot above them. The logo is centered horizontally within the orange rectangle.

ROAV

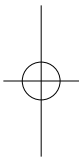
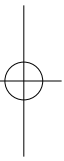
Owner's Manual

Roav DashCam C2 Pro



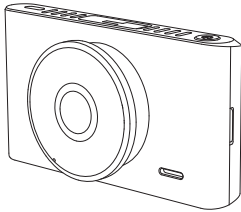
Table of Content

Safety Instructions	01
At a Glance	01
Inserting Memory Card	02
Installing Your DashCam	03
Connecting to Power	05
Downloading Roav App	06
Using Your DashCam	07
System Setup	09
Specifications	11
FAQ	12
Notice	13



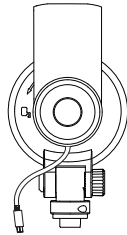


1



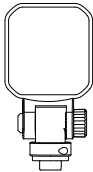
DashCam

2



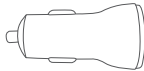
GPS Suction mount

3



Mount

4



Car charger

5



Charging cable

6



Crowbar

7



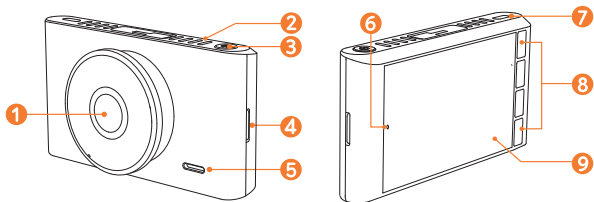
Manual

Safety Instructions

Please read and understand all instructions before using this product. If damage is caused by failure to follow the instructions, the warranty does not apply.

- Keep these instructions.
- Do not drop, puncture or disassemble this product.
- This product shall not be exposed to dripping or splashing.
- Avoid long exposure to direct sunlight, which may cause damage.
- Exposing this product to open flames may cause explosion.
- Use original accessories only.
- Do not install this product where it will block the driver's view of the road or the deployment of the airbag.
- Keep your attention on the road. Do not operate the controls of this product while driving.
- Ensure the camera lens is kept clean and there is nothing blocking the lens.
- Setup time and date accurately before using this product.
- Do not use the charger if the cord is damaged or broken.
- Remove this product from your vehicle when not in use for a long period.
- Keep out of reach of children.
- Use clean, soft cloth to clean. Do not use any corrosive cleaner/oil to clean.
- The Company is NOT responsible for the loss of any data/content during operation.

At a Glance



- 1 Camera lens
- 2 Air vent
- 3 Power button
- 4 Memory card slot
- 5 Speaker
- 6 LED indicator
 - Flashing blue: recording in progress
 - Steady red: no recording status
- 7 Micro USB charging port
- 8 Buttons
- 9 LCD screen

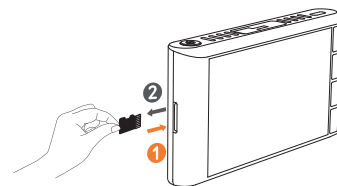
Inserting Memory Card



Do not remove or insert microSD / TF card when this product is powered on, which may damage the card.

For reliable operation, use a Class 10, 32GB microSD / TF card. For a 64GB/128GB card, format it before using. It is recommended to format the card regularly.

Card Capacity	1080P 30FPS	720P 60FPS	720P 30FPS
32 GB	320 min	360 min	480 min
64 GB	640 min	720 min	960 min
128 GB	1280 min	1440 min	1920 min



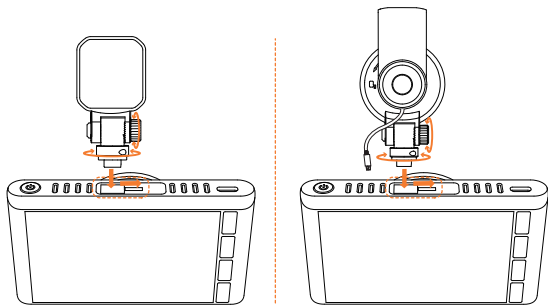
- 1 Insert a microSD / TF card with the gold contacts facing the screen side of the DashCam. Push the card until it clicks into place.
- 2 To remove the card, gently push its top edge inward until it clicks, and then pull it out of the slot.

Installing Your DashCam



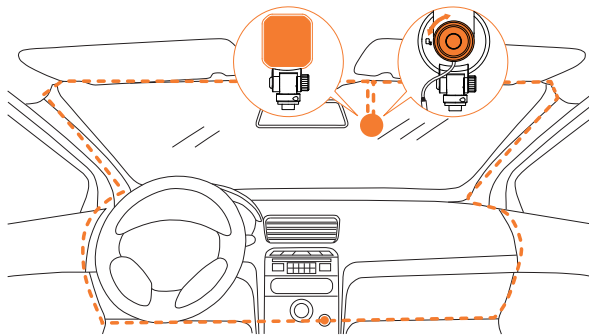
- Never install this product while driving.
- Install this product near the rear-view mirror to obtain the best open-field view. Do not install in a location that will obstruct your required driving view.
- Make sure that the lens is within the wiping range of the windshield wiper to ensure a clear view even when it rains.
- Do not touch the lens with your fingers. Finger grease may be left on the lens and will result in unclear videos.
- The mount is adhesive and may be destroyed if it is removed from the windshield.

- 1 Attach the DashCam onto the mount.



04

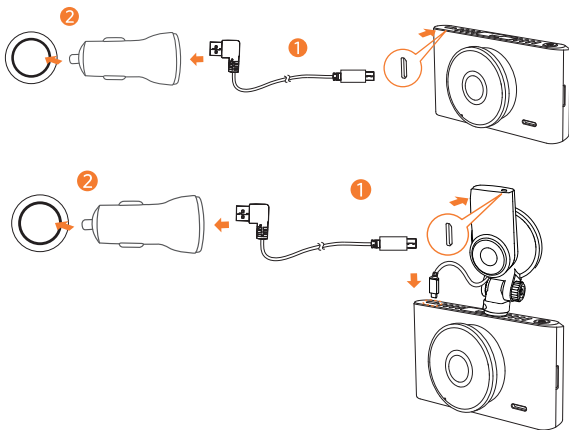
- 2 Select a location on the windshield near the bottom right corner of the rear-view mirror, clean with clear water and wait until fully dry.
- 3 Remove 3M adhesive sticker and firmly affix the mount onto the windshield. Alternatively, cover the suction mount onto the windshield and rotate the lock as indicated.
- 4 Use the crowbar to press and hide the charging cable into the seams and weatherstrips around the edge of the dashboard.
- 5 Adjust the lens viewing angle to ensure that it is aligned with the road ahead, then rotate the fixing knob to fasten.




05

Connecting to Power

- 1 Connect the car charger and DashCam by using the charging cable. (*When using the GPS suction mount, plug the micro-USB cable attached to it into the DashCam first, then connect the car charger and the GPS suction mount by using the charging cable.)
- 2 Plug the other end of the car charger to your vehicle's cigarette lighter socket.



 Once the car engine is started, DashCam will automatically power on and start recording. Once the car engine is shut down, DashCam will automatically save the recording and turn off.

Downloading Roav App

Download the Roav app from the App Store or Google Play.




Connect DashCam with Smartphone

When successfully connected with your smartphone via built-in Wi-Fi, you can save and playback the driving recording videos on your smartphone. You can also change settings of the DashCam via Roav app.



When successfully connected, DashCam stops recording.

- 1 Press  (Menu), select "WIFI" > "On" to enable WiFi on DashCam.
- 2 Enable WiFi on your smartphone, find "Roav DashCam C2 Pro" on the list and connect it, enter password (initial password: goroavcam) if required.
- 3 Follow the instructions on your smartphone to complete the connection.

Using Your DashCam



As a driver, you have full responsibility to drive safely and adhere to all applicable traffic regulations.

Record Videos

- 1 When connected to a car charger, DashCam automatically starts recording and a red dot flashes on the screen. The current recording duration is displayed, and the current date and time is displayed.
- 2 To enable / disable the audio recording, press

Protect the Current Recording

By default, DashCam uses a sensor to automatically detect accidental collisions and protect the video file with duration of 30 seconds, and is displayed. This indicates that those recordings have been locked and will not be overwritten by new video clips.

To protect the current recording manually, press

Playback Videos



The DashCam stops recording while viewing videos or settings.

- 1 Press to view all saved videos.
- 2 Select a video to playback.

Button	Virtual Button	Function
		Back to previous menu
		Lock Current / Unlock Current
		Delete Current / Delete All
		Play / Pause



System Setup

To adjust DashCam's settings, Press .







Menu Options	Description	Available Options
Resolution	Set a desired video resolution.	720P 60FPS / 720P 30FPS / 1080P 30FPS
Night Vision Enhancement	Adjust the brightness to enhance night vision.	Licence plate mode / Panorama mode / Balance mode
Driving Collision Detection	Sensitivity for gravity helps to detect vibration and shock while driving and makes DashCam to respond appropriately.	Low / Medium / High / Off
Parking Collision Detection	Enable to keep DashCam in standby mode. Motion will be detected for 15 times and DashCam starts recording a 30 second video each time.	Low / Medium / High / Off
Time Setup	Set date and time	Press + / - to adjust the value, press → to next option, press ✓ to save
Language	Set on-screen display menu language.	English / Deutsch / 日本語 / 简体中文 / 繁体中文 / Español / Italiano / Français

10

LCD Auto Off	Turn off the screen backlight after a period of inactivity.	30 Seconds / 60 Seconds / Off
Loop Recording	Set the duration of each recording video clip.	1 Minute / 3 Minutes / 5 Minutes / 10 Minutes
Machine Sound	Button Sound / Voice prompts / Power On/Off Sound	On / Off
GPS	Enable / disable GPS positioning module to record the complete driving path.	On / Off
WiFi	Connect with smartphone.	On / Off
Format	Format the memory card and all the data will be deleted.	Cancel / OK
Water Mark	Display / hide logo / date / GPS speed.	On / Off
Default	Reset all options to the default settings.	Cancel / OK
Frequency	Match the video frequency of DashCam with the electrical frequency of your location.	50 Hz (EU / China) / 60 Hz (US)
About	Check the current version number.	

Button	Virtual Button	Function
		Back to recording mode

11

		Toggle the previous setting
		Toggle the next setting
		Click to confirm a selection

Specifications



Specifications are subject to change without notice.

Screen: 3" LCD color TFT (960 x 240)

Camera sensor: Sony Exmor IMX 291

Camera lens: wide-angle lens 145°

Chipset: Ambarella A12

Power input: 5V $\overline{=}$ 1A

Max video resolution: 1080P 30FPS (1920x1080)

Video clip format: .MP4

Battery capacity: 470mAh

Operating temperature range: -20°C to 70°C / -4°F to 158°F


Operating temperature range: 0°C to 70°C / 32°F to 158°F
(Parking monitor)

Weight: Approx. 110 g / 3.6 oz

Size: 99*30*55 mm / 3.9*1.2*2.2 in

12

FAQ

- 1 Can not record?
 - Check if the memory card is inserted properly and there is enough free capacity.
 - Check the battery level.
- 2 Blurred image?
 - Use a clean, soft lens-cleaning cloth to gently clean the lens.
- 3 Malfunction or crash?
 - Press and hold the POWER button for at least 8 seconds.
- 4 Blank screen?
 - The screen saver is activated. Change settings to "Off" if required.
- 5 How to enable parking monitor?
 - Press , select "Parking Monitor" > "ON".
- 6 Worry about the memory card is full?
 - Continuous loop recording allows to overwrite the old unlocked files.

13

Notice

FCC Statement

This device complies with Part 15 of the FCC Rules. Operation is subject to the following two conditions: (1) This device may not cause harmful interference, and (2) This device must accept any interference received, including interference that may cause undesired operation.

Warning: Changes or modifications not expressly approved by the party responsible for compliance could void the user's authority to operate the equipment.

Note: This equipment has been tested and found to comply with the limits for a Class B digital device, pursuant to Part 15 of the FCC Rules. These limits are designed to provide reasonable protection against harmful interference in a residential installation.

This equipment generates, uses and can radiate radio frequency energy and, if not installed and used in accordance with the instructions, may cause harmful interference to radio communications. However, there is no guarantee that interference will not occur in a particular installation. If this equipment does cause harmful interference to radio or television reception, which can be determined by turning the equipment off and on, the user is encouraged to try to correct the interference by one or more of the following measures: (1) Reorient or relocate the receiving antenna. (2) Increase the separation between the equipment and receiver. (3) Connect the equipment into an outlet on a circuit different from that to which the receiver is connected. (4) Consult the dealer or an experienced radio / TV technician for help.

This device complies with Industry Canada licence-exempt RSS standard(s).

Operation is subject to the following two conditions:

- (1) this device may not cause interference, and
- (2) this device must accept any interference, including interference that may cause undesired operation of the device."

Le présent appareil est conforme aux CNR d'Industrie Canada applicables aux appareils radio exempts de licence. L'exploitation est autorisée aux deux conditions suivantes:

- (1) l'appareil n' doit pas produire de brouillage, et
- (2) l'utilisateur de l'appareil doit accepter tout brouillage radioélectrique subi, même si le brouillage est susceptible d'en compromettre le fonctionnement."

FCC Radiation Exposure Statement:

This equipment complies with FCC radiation exposure limits set forth for an uncontrolled environment. This equipment should be installed and operated with minimum distance 20cm between the radiator & your body.



12-month limited warranty



Lifetime technical support



support@goroav.com



+1 (800) 988 7973 (US) Mon-Fri 9:00 - 17:00 (PT)



Live Chat on Roav app and website



[@GoRoav](#)



[@GoRoav](#)