



Health & Wellness

Owner's Manual

BodySense Ear Thermometer



For FAQs and more information, please visit:

www.eufylife.com

Important Safety Instructions

Read this instruction manual thoroughly before using the device and keep for future reference. For specific information regarding your body temperature, consult a physician.

WARNING: Indicates a potentially hazardous situation which, if not avoided, could result in serious injury or death.

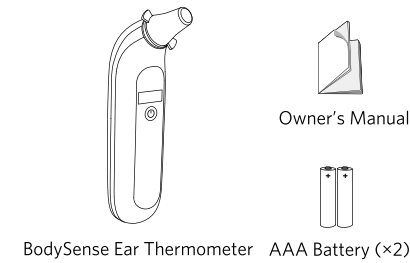
General

- Do not use this device if suffering from ear diseases such as otitis externa or otitis media.
- Do not use this device when the external auditory canal is wet, such as after swimming or taking a bath.
- Do not touch the lens with a finger or breathe on it.
- Do not use in a humid environment or a location where water may splash onto the device. Doing so may damage the device.
- Do not take any measurements immediately after physical activity, as this can affect body temperature. Wait thirty minutes for the body to return to normal temperature.
- Do not service or do any maintenance work while the device is in use.
- Always consult with your physician. Self-diagnosis of measurement results and self-treatment are dangerous practices.
- If you feel discomfort such as a pain during the measurement, stop using the device immediately.
- Allow thirty minutes for the device to reach room temperature if it is stored in an area with a different temperature than the room in which it will be used.
- This device contains small parts that may present a choking hazard to children. Keep the device and all parts out of the reach of children. Never leave children or those who require close supervision unattended with this device.
- The patient can be the intended operator.
- This device is equipped with a data transmission function that emits electromagnetic energy. Portable Radio Frequency (RF) communications equipment (including peripherals such as antenna cables and external antennas) should not be used within 12 in (30 cm) of the device, otherwise, performance may be affected.
- This device should not be used when it is adjacent to or stacked on top of another device because it could cause the device to operate improperly. If such use is necessary, this device and the other device should be observed to verify that they are operating normally.

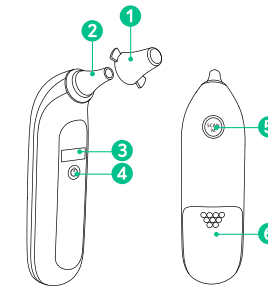
Battery

- This device is powered by two AAA batteries. Do not attempt to recharge non-rechargeable batteries as this can cause the batteries to leak or explode.
- This device can be powered by rechargeable batteries.
- Do not mix and use different types of batteries together e.g. lithium-ion (Li-ion) and nickel-metal hydride (NiMH) batteries.
- Do not mix new and used batteries.
- Used batteries should be placed in a sealed plastic bag and disposed of safely according to local environmental regulations.
- If the device will not be used for an extended period of time, remove batteries before storing the device in a cool and dry place.

What's In the Box



At a Glance



- 1 Protective cap
- 2 Temperature probe
- 3 LCD display
- 4 On / Off button
- 5 Scan and Memory button
- 6 Battery door

Inserting the Batteries

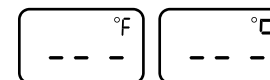
Open the battery door and insert two AAA batteries. Make sure the positive and negative ends are facing the correct polarity directions as indicated in the battery compartment.



will keep flashing on the LCD display when the batteries are low. Replace both batteries at the same time. Do not mix new and used batteries.

Selecting the Measuring Unit

When the thermometer is turned off, press and hold the button for five seconds until the default measuring unit $^{\circ}\text{F}$ appears on the LCD display. Release and then press the button again to switch to $^{\circ}\text{C}$.

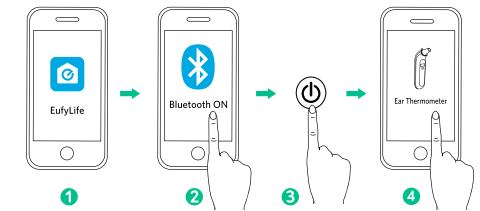


Installing the App and Pairing

- Download the EufyLife app from the App Store (iOS devices) or Google Play (Android devices).
- Enable Bluetooth on your smartphone or tablet.
- Press the button to turn on the ear thermometer.
- Open the EufyLife app and follow the on-screen instructions to pair the ear thermometer with your device.
 - Once paired, the app and ear thermometer will automatically connect to each other the next time the app is opened.

	Pairing
	Connected

- Create and set up a user ID to track measurement data. It is possible to create up to 16 user IDs.



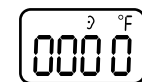
- The ear thermometer is compatible with devices running iOS 8.0 and above or Android 4.3 and above.

- Use the EufyLife app to pair the ear thermometer with your smartphone. Do not pair using your smartphone's Bluetooth menu.

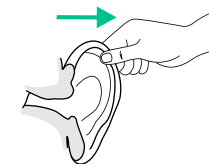
- To connect automatically, the smartphone and ear thermometer must be within 33 ft / 10 m of each other.

Using Your Ear Thermometer

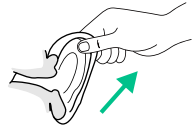
- Open the EufyLife app and select your user ID.
- Remove the protective cap.
- Press the button to turn the ear thermometer on.
 - The following display will appear after two short beeps, the ear thermometer is now ready to measure.



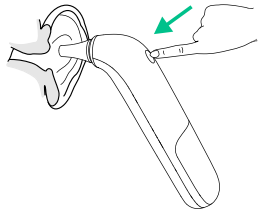
- Straighten the ear canal and insert the probe into the ear canal.
 - For children under 12 months: Straighten the ear canal by pulling the ear back gently as shown.



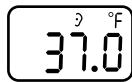
- For children over 12 months and adults:
Straighten the ear canal by pulling the ear back and up gently as shown.



- Press the button and do not move until you hear a long beep.



- Remove the ear thermometer carefully from your ear canal. The temperature reading will appear on the display and be transmitted to the app via Bluetooth automatically.



- Replace the protective cap.



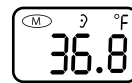
- It's recommended that you measure three times with the same ear, at 15-second intervals, and select the highest temperature reading.
- To avoid the risk of cross contamination, clean the the probe according to the "Maintenance and Storage" section after each use.

Fever Alarm

If the ear thermometer detects a body temperature above 99.5°F (37.5°C), it will emit a series of beeps to warn you of a potential fever.

Viewing Measurement Records

When the thermometer is turned off, press the button and release. The display will light up. Press the Scan/M button again repeatedly to cycle through the recent measurement records. It will store the last twelve temperature readings.



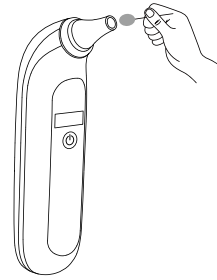
You can also view and manage measurement records by going to the History page in the EufyLife app.

Maintenance and Storage

To obtain the best performance, please observe the following:

- Regularly clean the body of the device with a dry or slightly dampened soft cloth.
- The probe is the most delicate part of the ear thermometer. Extra care is needed when cleaning the lens (on the inside of the probe).

Use an alcohol swab or cotton swab moistened with alcohol to clean the lens. Allow the lens to fully dry for at least 1 minute before replacing the protective cap.



- Do not wash the device with water or immerse it in water.
- Do not use detergents to clean the device.
- Do not shake, strike or drop the device.
- Do not disassemble or attempt to repair the device.
- Do not store the device in locations exposed to extreme temperatures, humidity, direct sunlight, dust or corrosive vapours such as bleach.
- Store the device and the components in a clean, safe location.

Troubleshooting

Error Message

Error Display	Description	Solution
L	Temperature taken is lower than 96.1°F (35.6°C).	Make sure the probe is clean and take a new measurement.
H	Temperature taken is higher than 108.0°F (42.2°C).	Make sure the probe is clean and take a new measurement.
Err	Ambient temperature is not within the range of 60.8°F - 95.0°F (16°C - 35°C).	Allow 30 minutes for the ear thermometer to reach room temperature before using.

Issue	Cause	Solution
Nothing happens when the button is pushed.	<ul style="list-style-type: none"> Batteries are not installed properly. Worn batteries. 	<ul style="list-style-type: none"> Make sure the batteries are properly installed. Replace both batteries at the same time.

Specifications

*Specifications are subject to change without notice.

Product Model	T9170
Input	3 V (2 × AAA batteries)
Measurement Method	IR sensor

Measurement Range	96.1°F - 108.0°F (35.6°C - 42.2°C)
Measuring Accuracy	± 0.5°F (±0.3°C)
Operating Environment	Temperature: 60.8°F - 95.0°F (16°C - 35°C) Humidity: 20 - 85% RH
Storage Environment	Temperature: 14°F - 122.0°F (-10°C - 50°C) Humidity: 10 - 85% RH
Dimension	5.9 × 2.3 × 1.7 in / 150 × 58 × 42 mm
Net Weight	2.3 oz / 65 g

Appendix

Normal Body Temperature Ranges

Normal human body temperature varies depending on a variety of factors such as age, gender, time of day, or if you have just exercised.

This table shows the normal body temperatures of various locations. Therefore, readings from different locations, even if taken at the same time, should not be directly compared. For specific information regarding your body temperature, consult a physician.

°F	0 - 2 Years	3 - 10 Years	11 - 65 Years	> 65 Years
Oral	-	95.9 - 99.5	97.6 - 99.6	96.4 - 98.5
Rectal	97.9 - 100.4	97.9 - 100.4	98.6 - 100.6	97.1 - 99.2
Axillary	94.5 - 99.1	96.6 - 98.0	95.3 - 98.4	96.0 - 97.4
Ear	97.5 - 100.4	97.0 - 100.0	96.6 - 99.7	96.4 - 99.5
Core	97.5 - 100.0	97.5 - 100.0	98.2 - 100.2	96.6 - 98.8

Notice



This symbol means the product must not be discarded as household waste, and should be delivered to an appropriate collection facility for recycling. Proper disposal and recycling helps protect natural resources, human health and the environment. For more information on disposal and recycling of this product, contact your local municipality, disposal service, or the shop where you bought this product.



This symbol means "Refer to instruction manual or booklet".

FCC Statement

This device complies with Part 15 of the FCC Rules. Operation is subject to the following two conditions: (1) This device may not cause harmful interference, and (2) this device must accept any interference received, including interference that may cause undesired operation.

Warning: Changes or modifications not expressly approved by the party responsible for compliance could void the user's authority to operate the equipment.

Note: This equipment has been tested and found to comply with the limits for a Class B digital device, pursuant to Part 15 of the FCC Rules. These limits are designed to provide reasonable protection against harmful interference in a residential installation.

This equipment generates, uses and can radiate radio frequency energy and, if not installed and used in accordance with the instructions, may cause harmful interference to radio communications. However, there is no guarantee that interference will not occur in a particular installation. If this equipment does cause harmful interference to radio or television reception, which can be determined by turning the equipment off and on, the user is encouraged to try to correct the interference by one or more of the following measures: (1) Reorient or relocate the receiving antenna. (2) Increase the separation between the equipment and receiver. (3) Connect the equipment into an outlet on a circuit different from that to which the receiver is connected. (4) Consult the dealer or an experienced radio / TV technician for help.

RF Warning Statement

The device has been evaluated to meet general RF exposure requirements. The device can be used in portable exposure conditions without restriction.

Customer Service



15-month limited warranty



Lifetime technical support



support@eufylife.com



1-800-988-7973 (US) Mon-Fri 9am-5pm (PST)



@EufyOfficial



@EufyOfficial



@EufyOfficial



@EufyOfficial