

CONFIDENTIAL	 Pen Generations	Document No: <i>PG-CM- UserManual</i>
Title: <ADP601> Users Manual		Revision: 20111230
Prepared by: Taeyoung Ko		Date: 2012.01.04.

ADP-601

Users Manual


CONFIDENTIAL	 Pen Generations	Document No: <i>PG-CM- UserManual</i>
Title: <ADP601> Users Manual		Revision: 20111230
Prepared by: Taeyoung Ko		Date: 2012.01.04.

Table of Content

<i>ADP-601</i>	1
<i>USERS MANUAL</i>	1
TABLE OF CONTENT	2
1 OVERVIEW	3
2 ANOTO STREAMER TEST TOOL	3
2.1 Installation.....	3
2.2 Streaming test.....	5
3 DOTNOTE.....	16
3.1 Installation.....	16
3.2 Streaming test.....	19
4 BATTERY CHARGING	23
4.1 Preparation	23
4.2 Charging Method	23

CONFIDENTIAL		Document No: <i>PG-CM- UserManual</i>
Title: <ADP601> Users Manual		Revision: 20111230
Prepared by: Taeyoung Ko		Date: 2012.01.04.

1 OVERVIEW

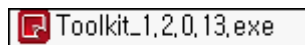
This page is where you can view the streaming related features include the usage of the ADP-601.

2 ANOTO STREAMER TEST TOOL

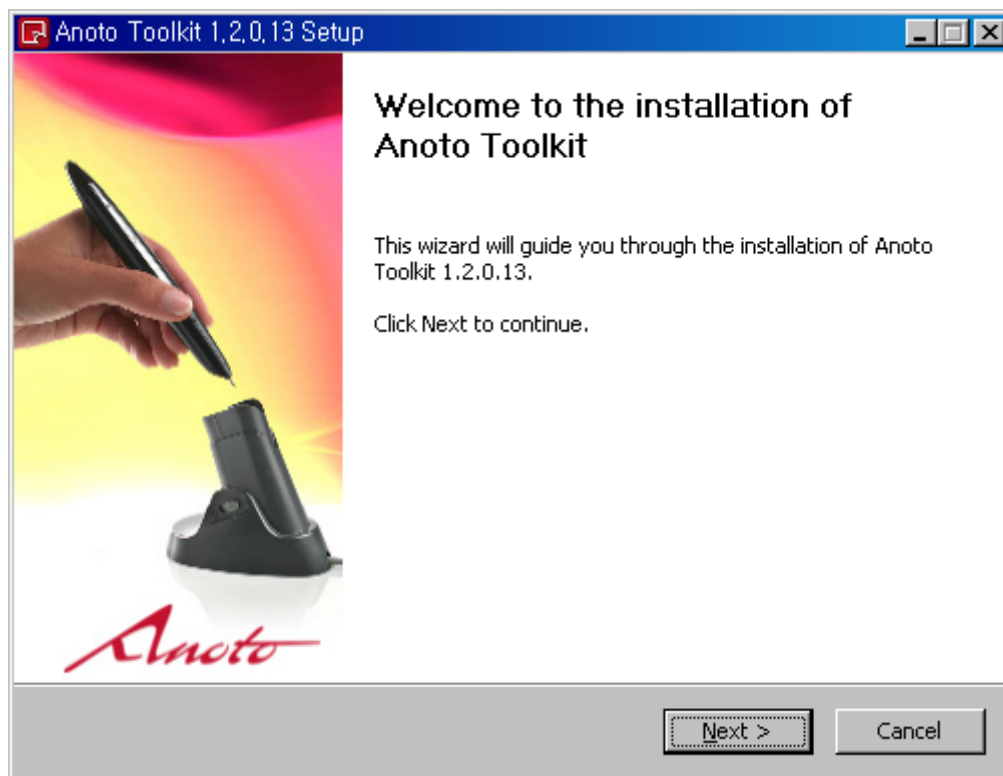
This Tool is included in the Toolkit to deploy from Anoto the application program, check the streaming of the pen, and force sensor value, coordinate PenID can know the status value, etc..

2.1 Installation

Toolkit_x.x.x.exe (means the toolkit version x.x.x) double click

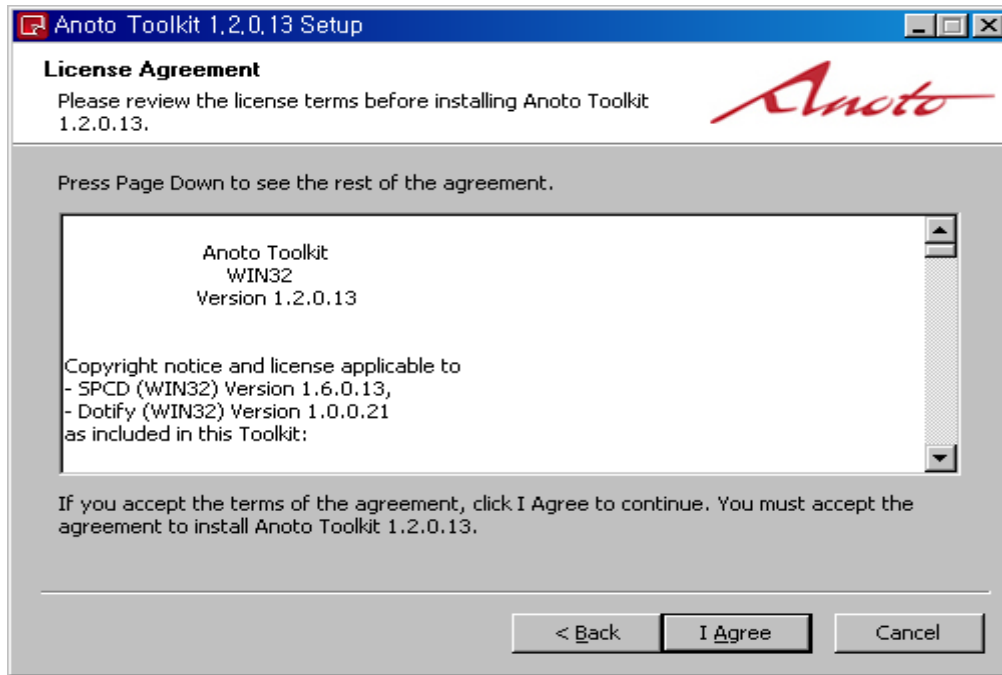


A. “Next” button click

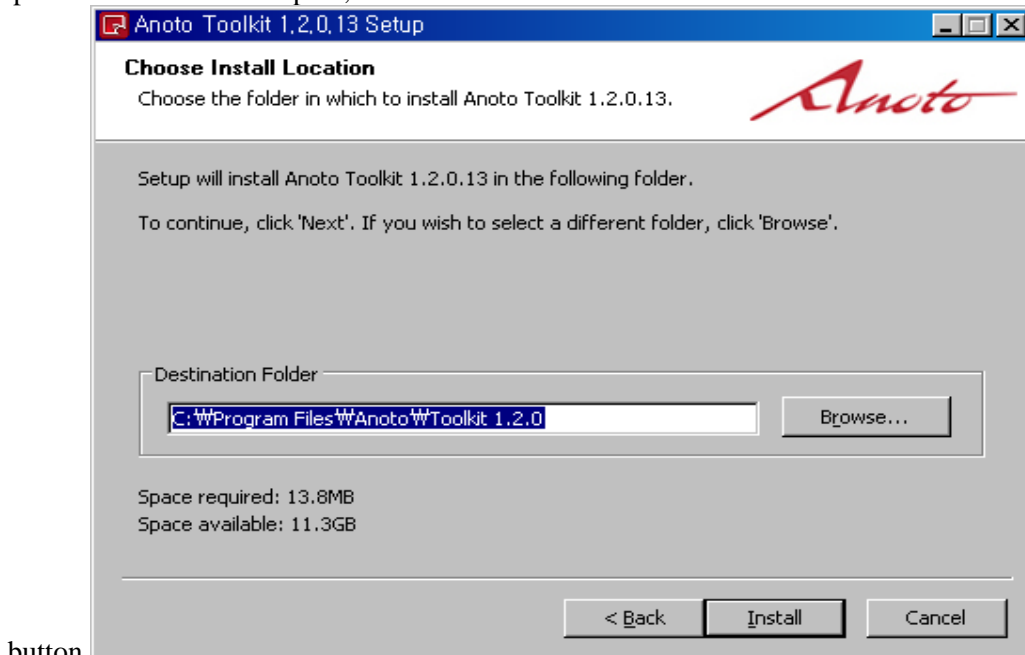


CONFIDENTIAL		Document No: <i>PG-CM- UserManual</i>
Title: <ADP601> Users Manual		Revision: 20111230
Prepared by: Taeyoung Ko		Date: 2012.01.04.

B. "I Agree" button click



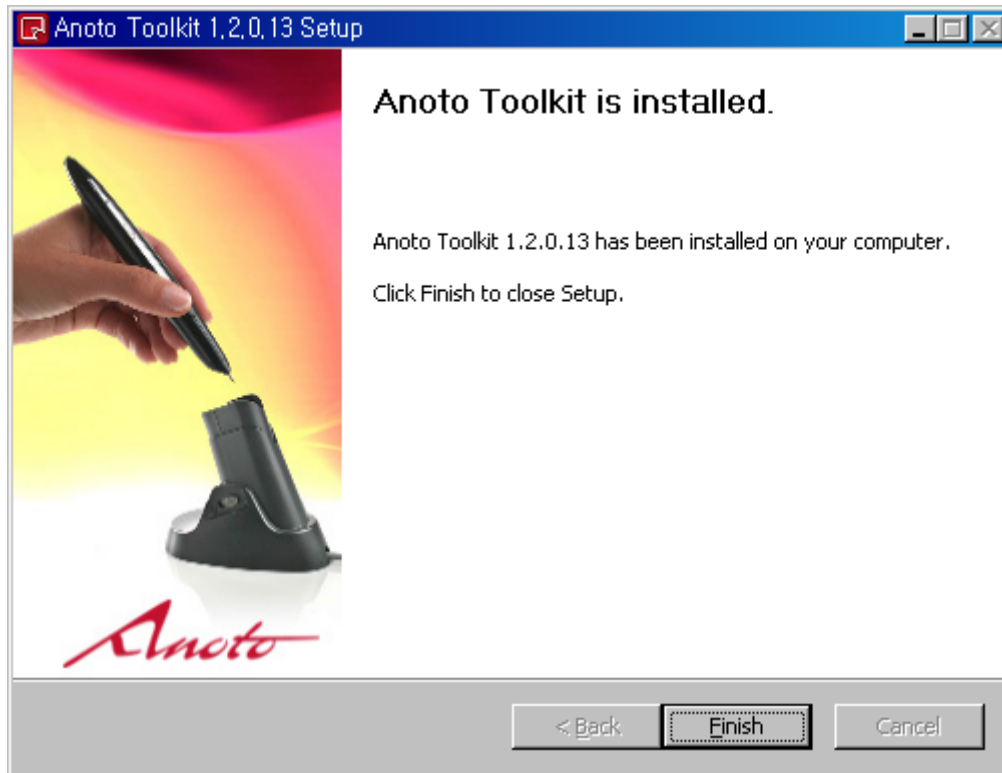
C. Specifies the installation path, click the "Install"



button.

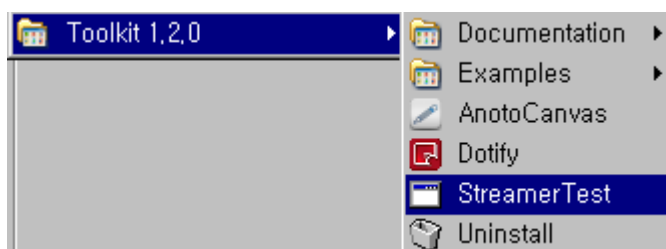
CONFIDENTIAL		Document No: <i>PG-CM- UserManual</i>
Title: <ADP601> Users Manual		Revision: 20111230
Prepared by: Taeyoung Ko		Date: 2012.01.04.

D. Click on the button "Finish" to complete the installation.



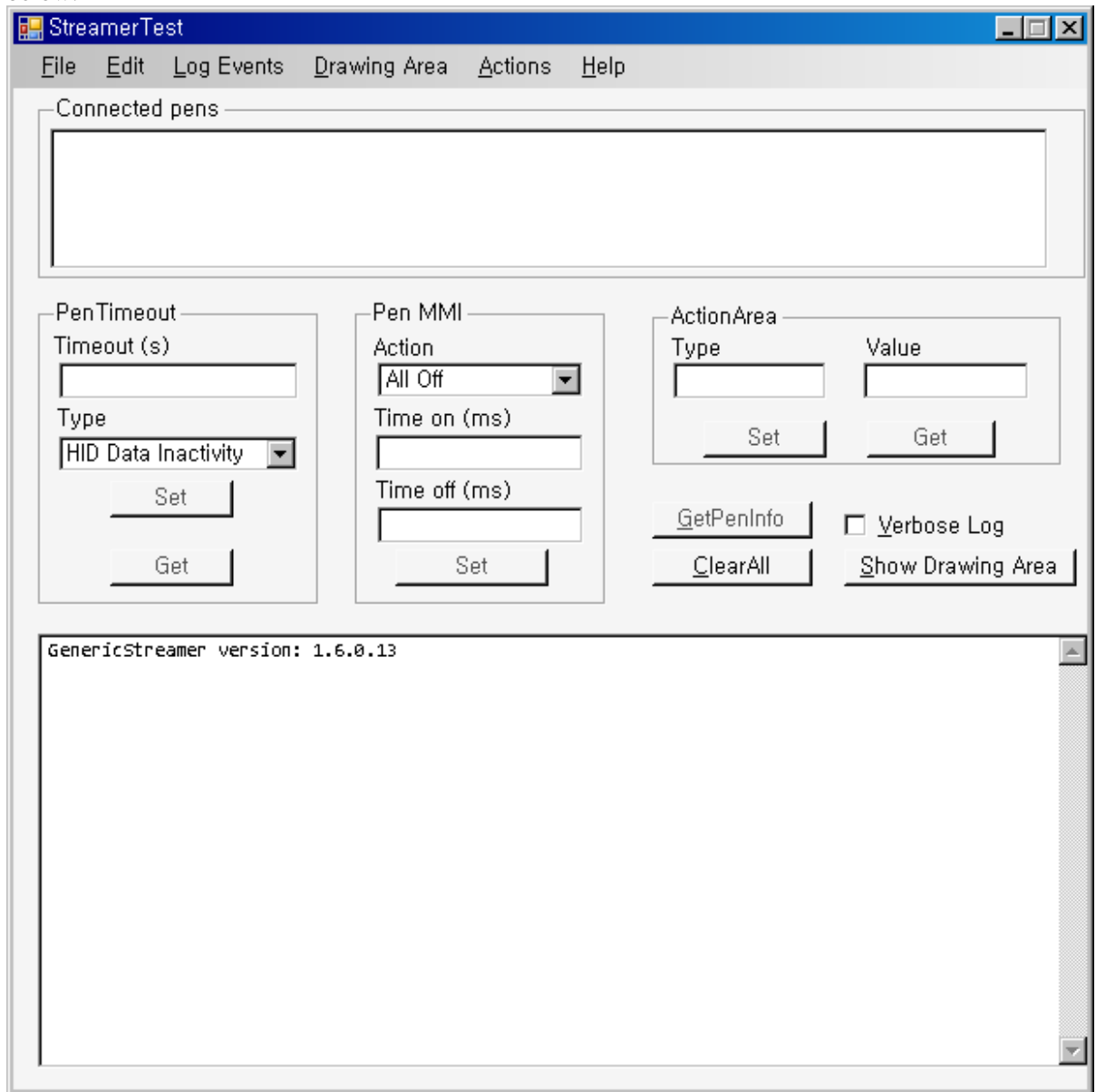
2.2 Streaming test

A. Start->Program->Anoto->Toolkit x.x.x->StreamerTest



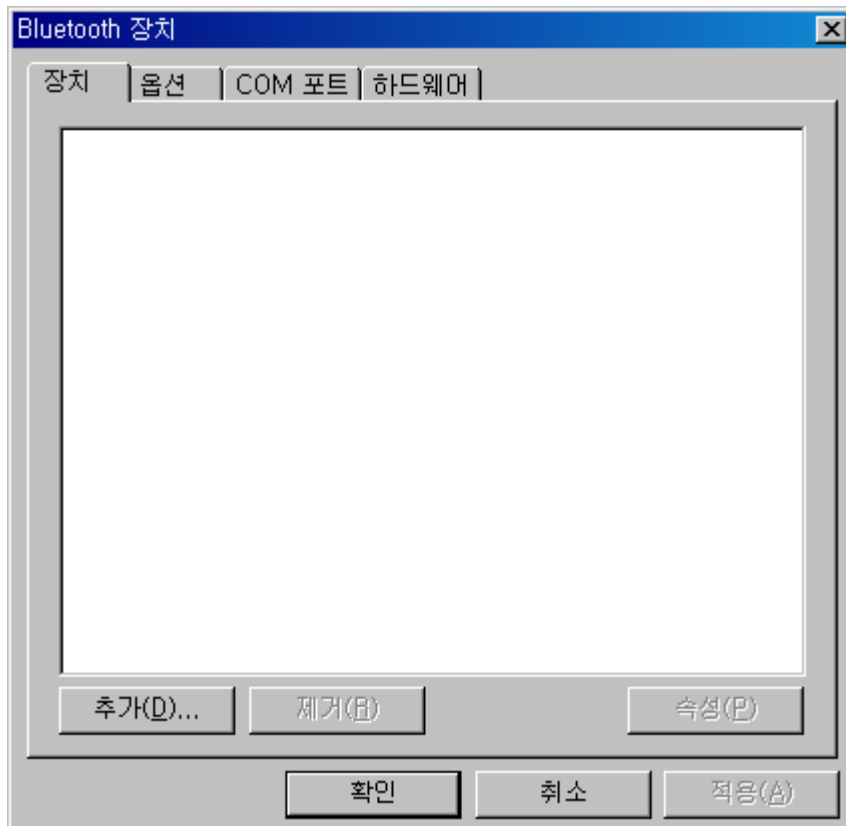
CONFIDENTIAL		Document No: <i>PG-CM- UserManual</i>
Title: <ADP601> Users Manual		Revision: 20111230
Prepared by: Taeyoung Ko		Date: 2012.01.04.

B. When you run the program, run as shown below.



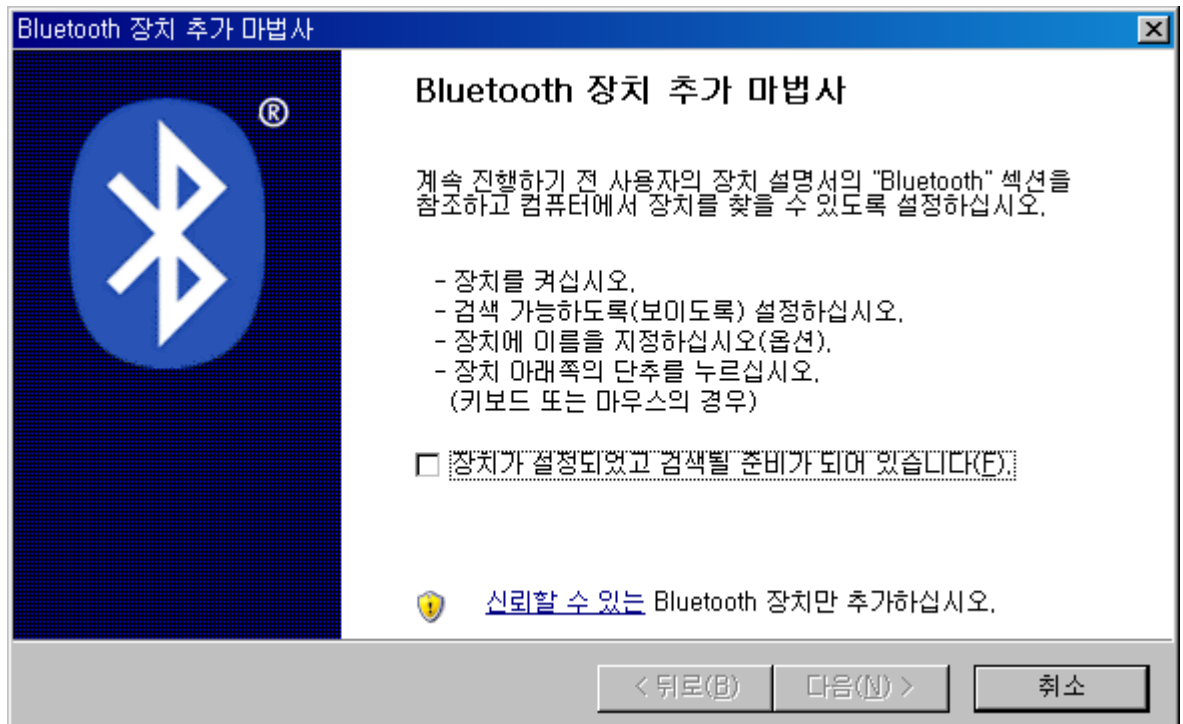
- C. Application is installed to your PC and Bluetooth pairing between the pen test.
- i. Support for Bluetooth on the PC, if you do not need a Bluetooth dongle
 - ii. Start-> settings -> control panel-> Bluetooth Devices Double click

CONFIDENTIAL	 Pen Generations	Document No: <i>PG-CM- UserManual</i>
Title: <ADP601> Users Manual		Revision: 20111230
Prepared by: Taeyoung Ko		Date: 2012.01.04.

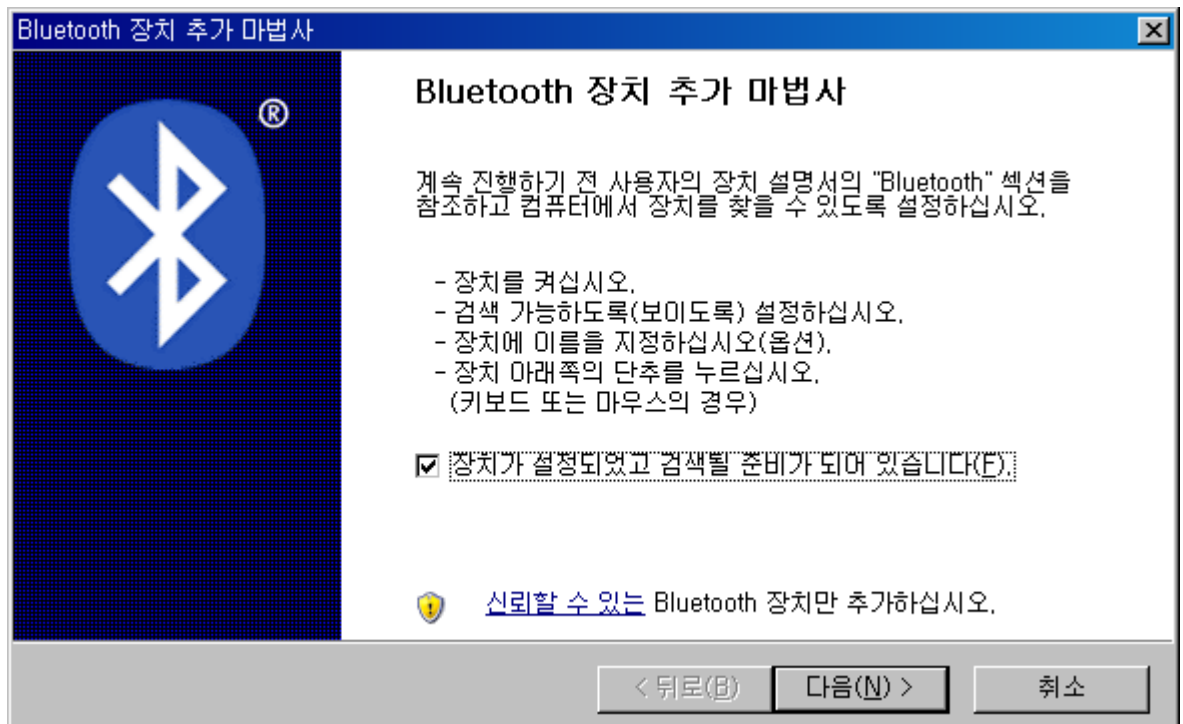


- iii. After Pen ON, Add button click

CONFIDENTIAL		Document No: PG-CM- UserManual
Title: <ADP601> Users Manual		Revision: 20111230
Prepared by: Taeyoung Ko		Date: 2012.01.04.



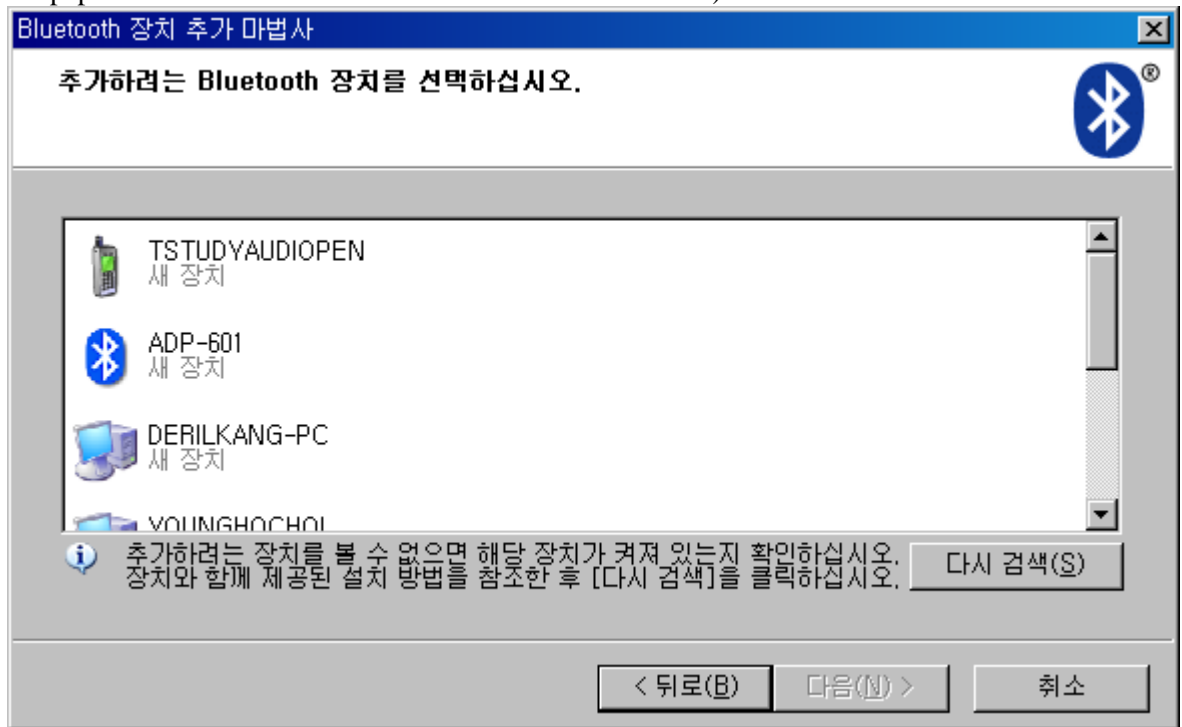
iv. After you select the check box, select the button "next"



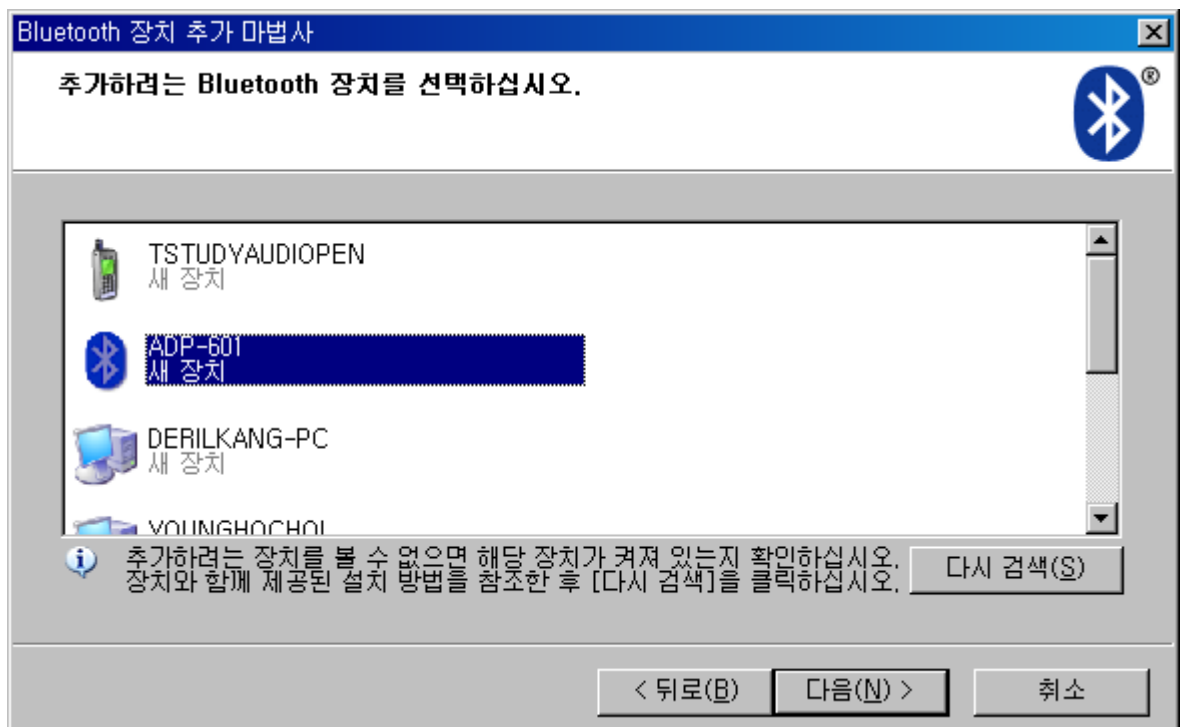
v. Device ADP-601 device is a search via a search, as shown below. If this fails, press the "search again". (During a search, you need to have ADP601 the pen is ON the Green

CONFIDENTIAL		Document No: PG-CM- UserManual
Title: <ADP601> Users Manual		Revision: 20111230
Prepared by: Taeyoung Ko		Date: 2012.01.04.

LED is flashing quickly. If you are a slow blink, this idle state, so that pen the pen tip on the paper test set Penn State switched to discoverable mode.)

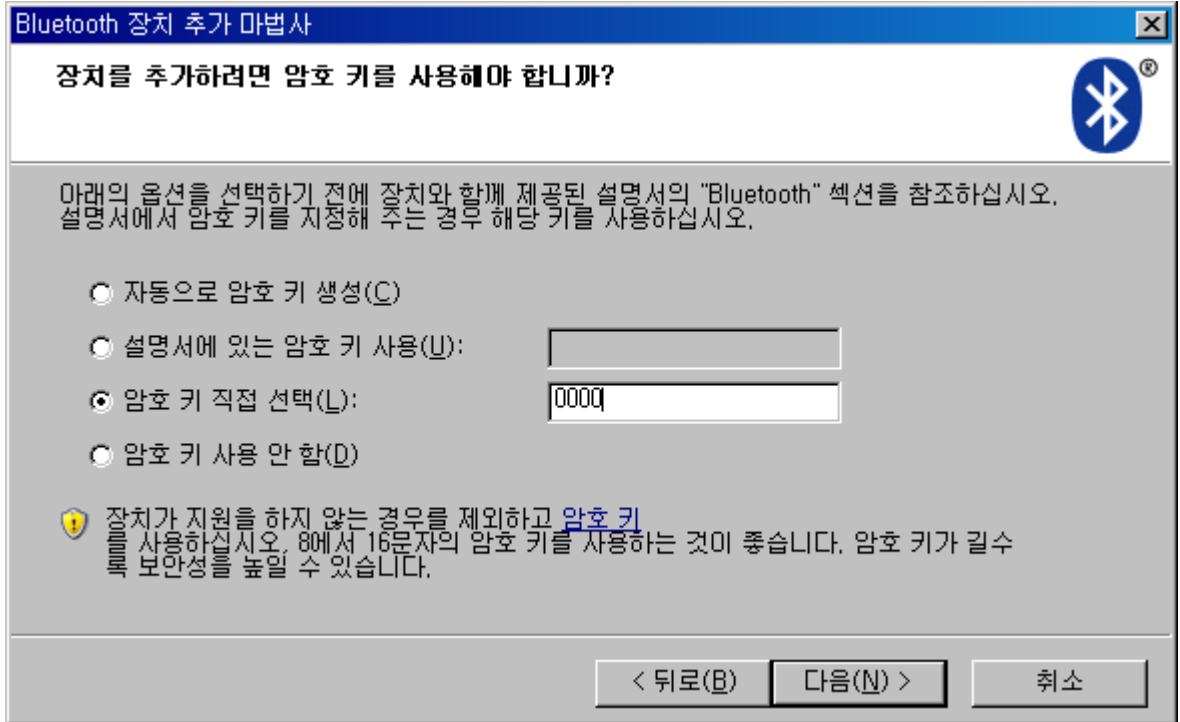


- vi. Select ADP-601, click on the button "next"

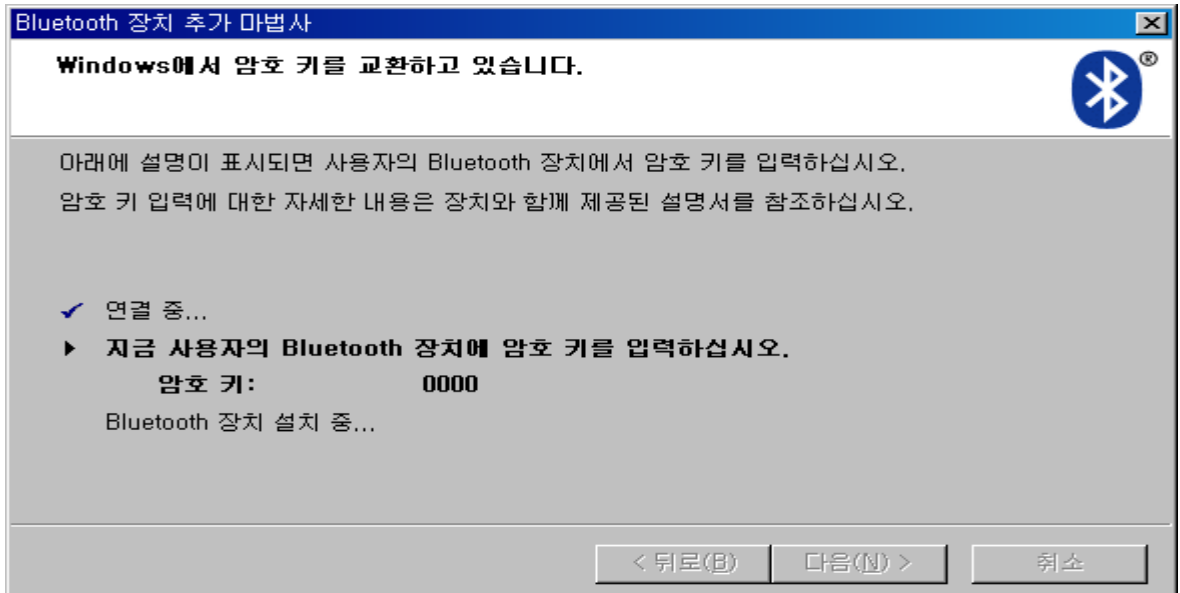


CONFIDENTIAL		Document No: PG-CM- UserManual
Title: <ADP601> Users Manual		Revision: 20111230
Prepared by: Taeyoung Ko		Date: 2012.01.04.

- vii. “Let me choose my own passkey” Select, password(0000) Insert → Select the "next"

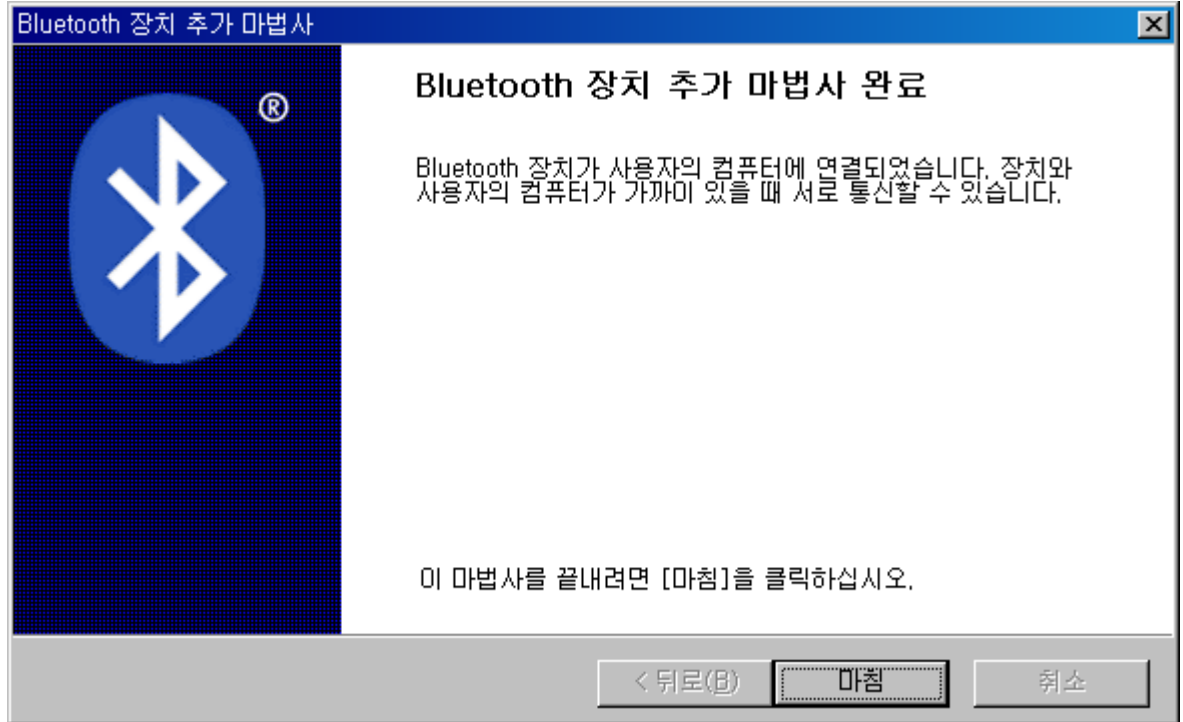



- viii. Pairing the progress screen is the same as below, if you fail to complete the password or Bluetooth pairing environment, USAID tries again pairing.



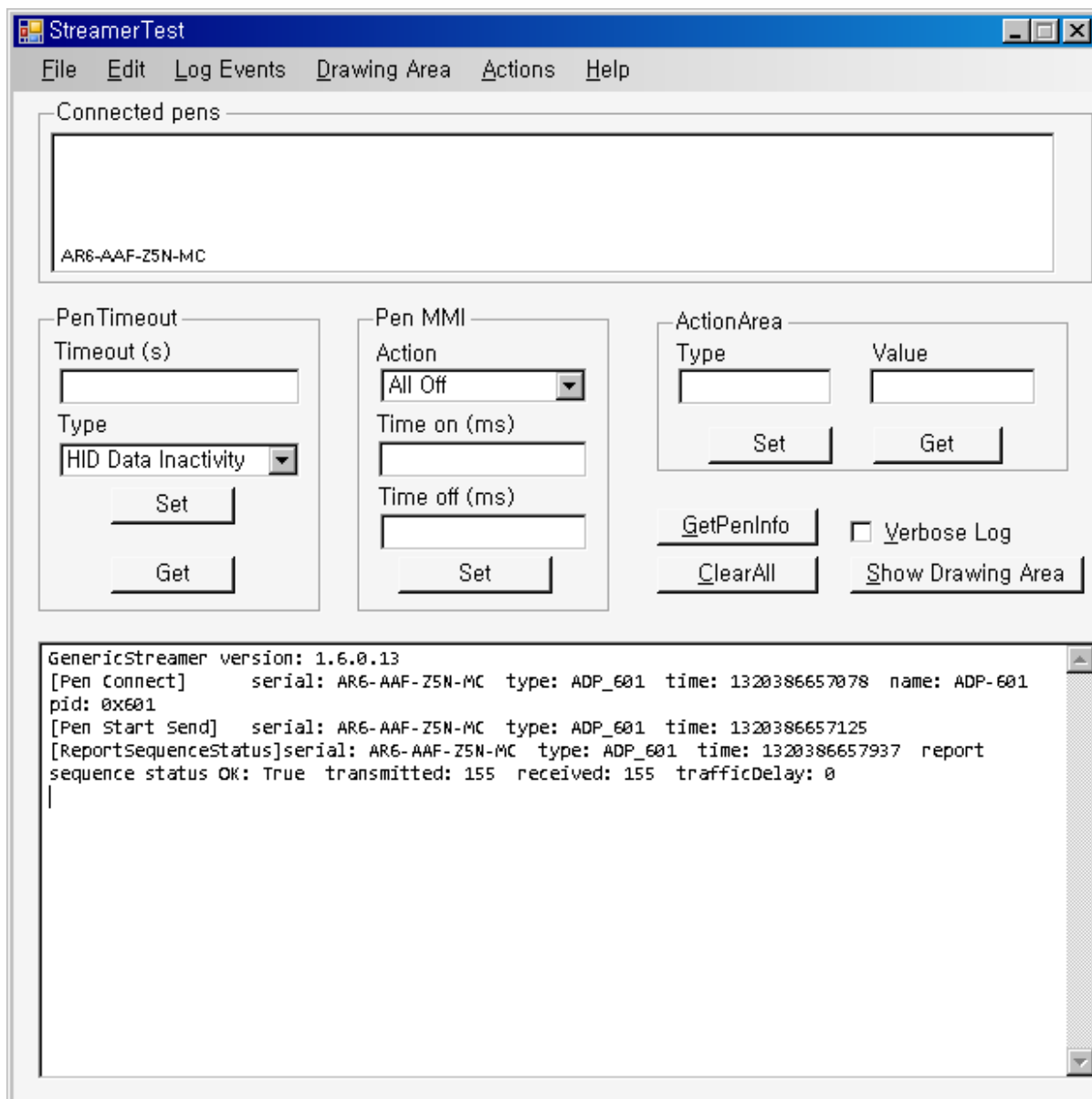
CONFIDENTIAL		Document No: PG-CM- UserManual
Title: <ADP601> Users Manual		Revision: 20111230
Prepared by: Taeyoung Ko		Date: 2012.01.04.

ix. “Finish” button click.



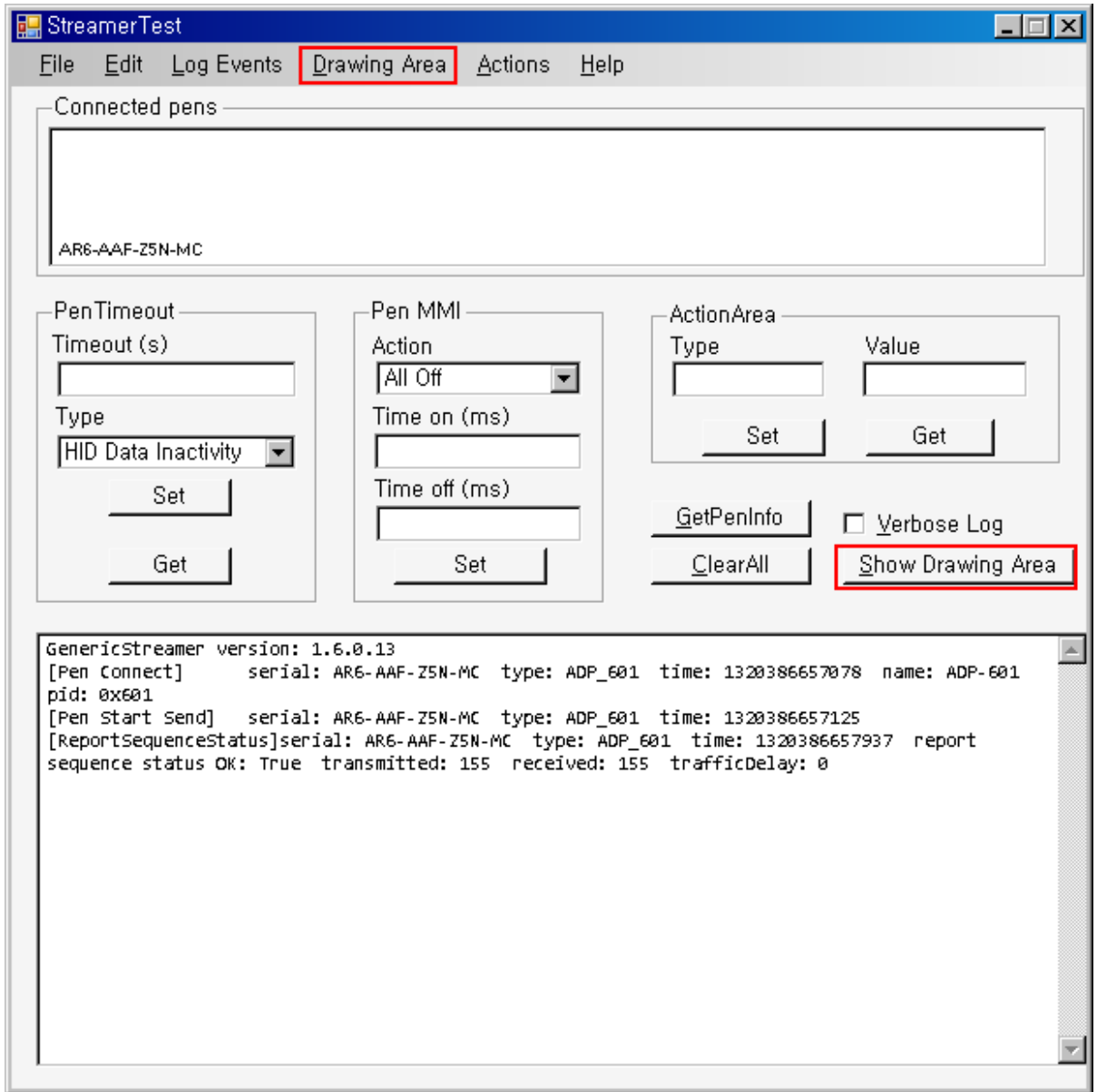
CONFIDENTIAL		Document No: <i>PG-CM- UserManual</i>
Title: <ADP601> Users Manual		Revision: 20111230
Prepared by: Taeyoung Ko		Date: 2012.01.04.

D. Streamer pairing succeeds, the application on-screen ID and Pen test Pen log looks related to connect.



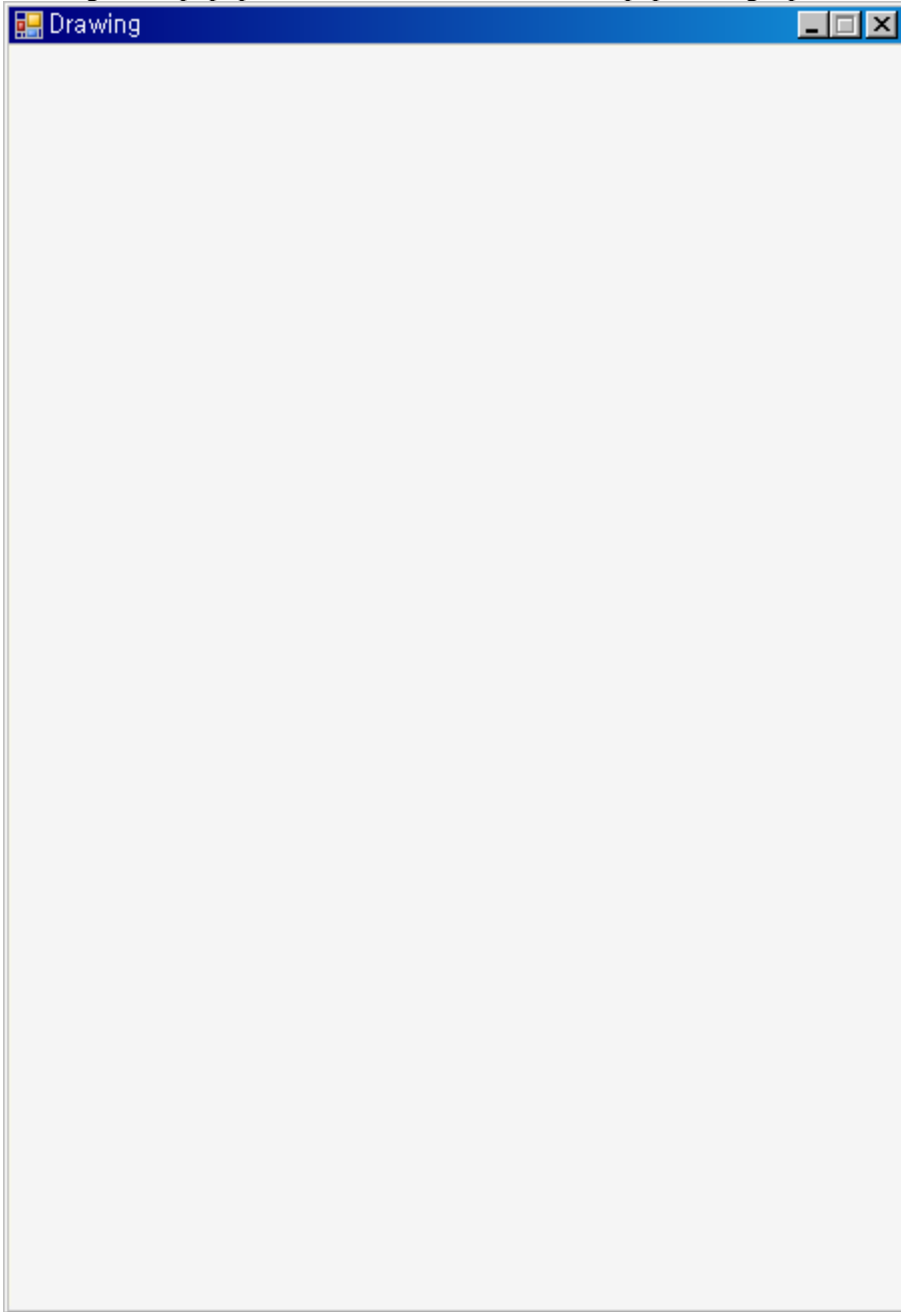
- E. Choose one of the following methods to run the box Drawing
- i. “Show Drawing Area” button select
 - ii. “Drawing Area” -> “Show” button select

CONFIDENTIAL		Document No: <i>PG-CM- UserManual</i>
Title: <ADP601> Users Manual		Revision: 20111230
Prepared by: Taeyoung Ko		Date: 2012.01.04.



CONFIDENTIAL	 Pen Generations	Document No: <i>PG-CM- UserManual</i>
Title: <ADP601> Users Manual		Revision: 20111230
Prepared by: Taeyoung Ko		Date: 2012.01.04.

F. Drawing a box popup after it has been written on the paper using a pen test attempts



CONFIDENTIAL	 <i>Pen Generations</i>	Document No: <i>PG-CM- UserManual</i>
Title: <ADP601> Users Manual		Revision: 20111230
Prepared by: <i>Taeyoung Ko</i>		Date: 2012.01.04.

G. The user wrote in the Box If your handwriting Drawing equally on exam paper.



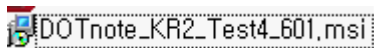
CONFIDENTIAL		Document No: PG-CM- UserManual
Title: <ADP601> Users Manual		Revision: 20111230
Prepared by: Taeyoung Ko		Date: 2012.01.04.

3 DOTNOTE

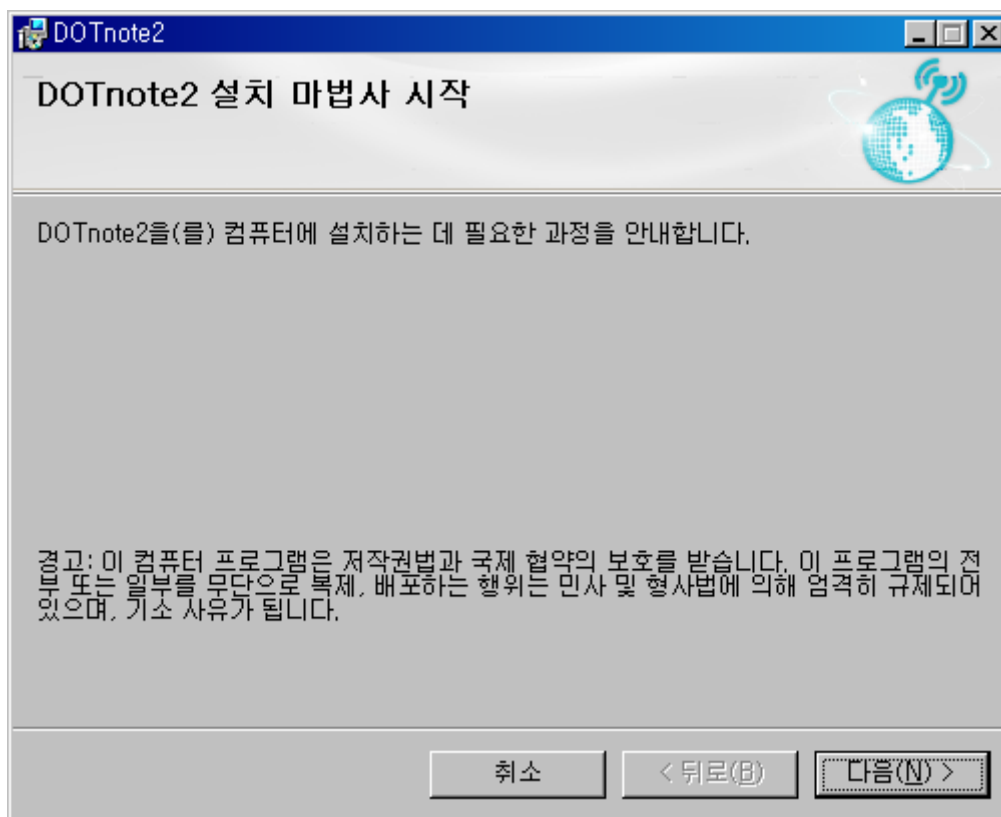
This manual is a program to distribute the application as in Tstudy, shows on the screen, and note-taking information of the pen..

3.1 Installation

- A. DOTnote_KR2_Test4_601.msi double click

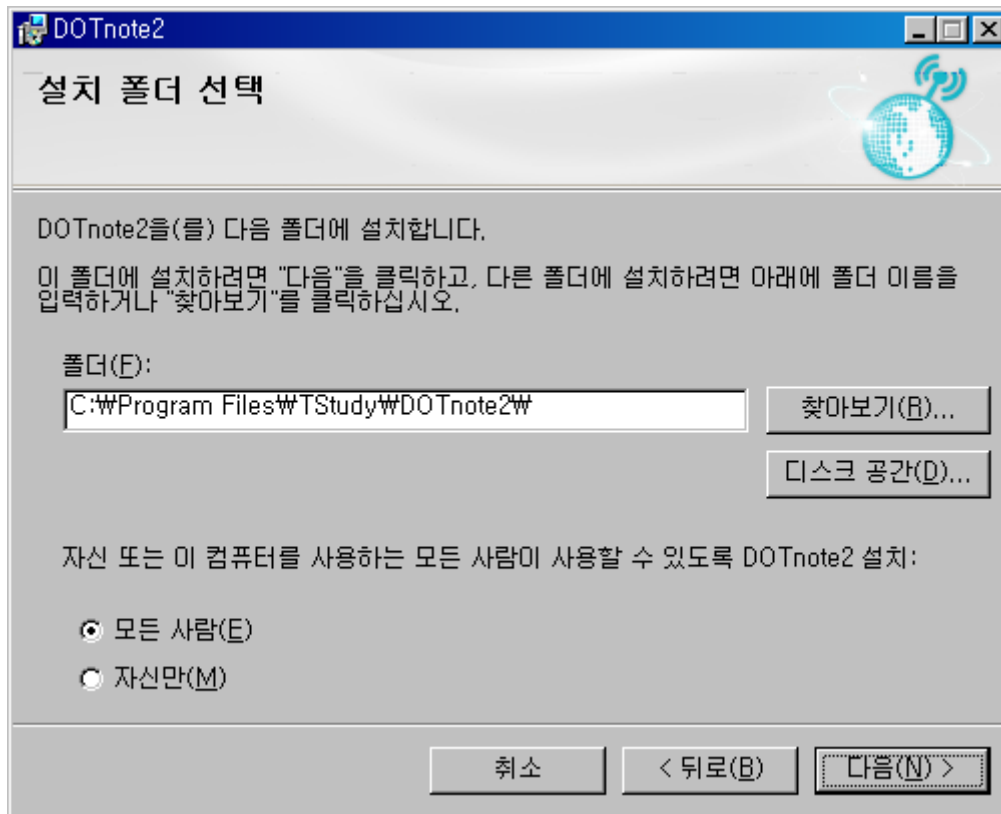


- B. The Setup Wizard starts, click to select the "next"



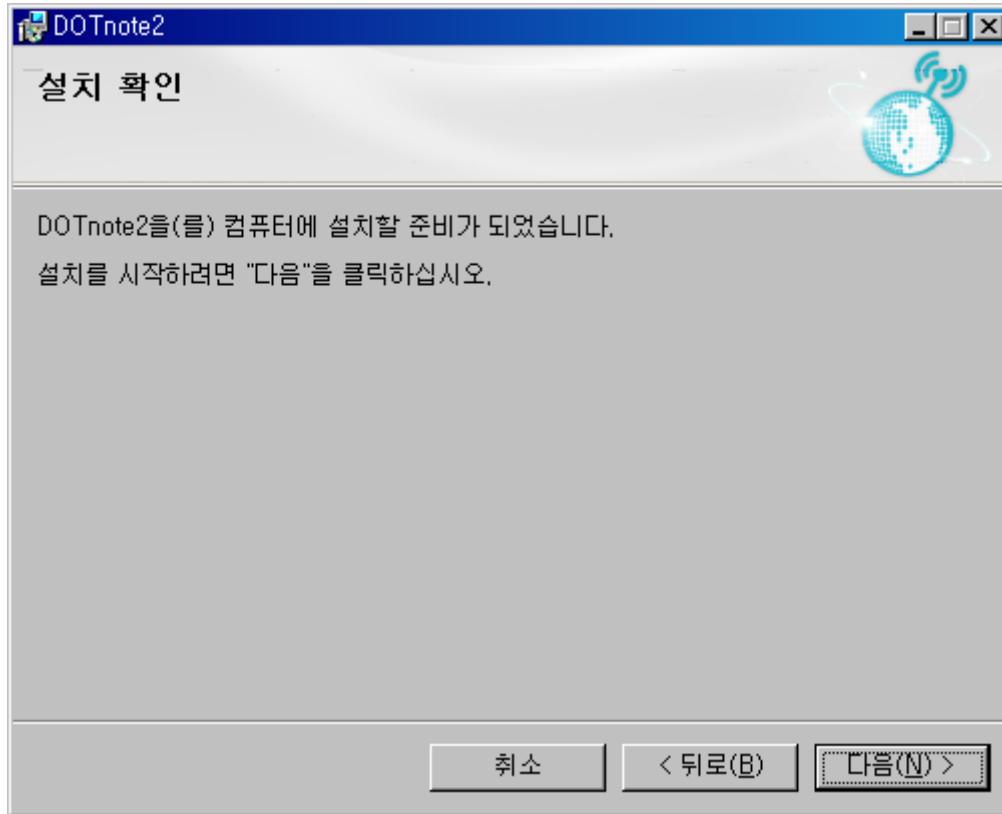
CONFIDENTIAL		Document No: PG-CM- UserManual
Title: <ADP601> Users Manual		Revision: 20111230
Prepared by: Taeyoung Ko		Date: 2012.01.04.

C. Select the installation path, and select "next"



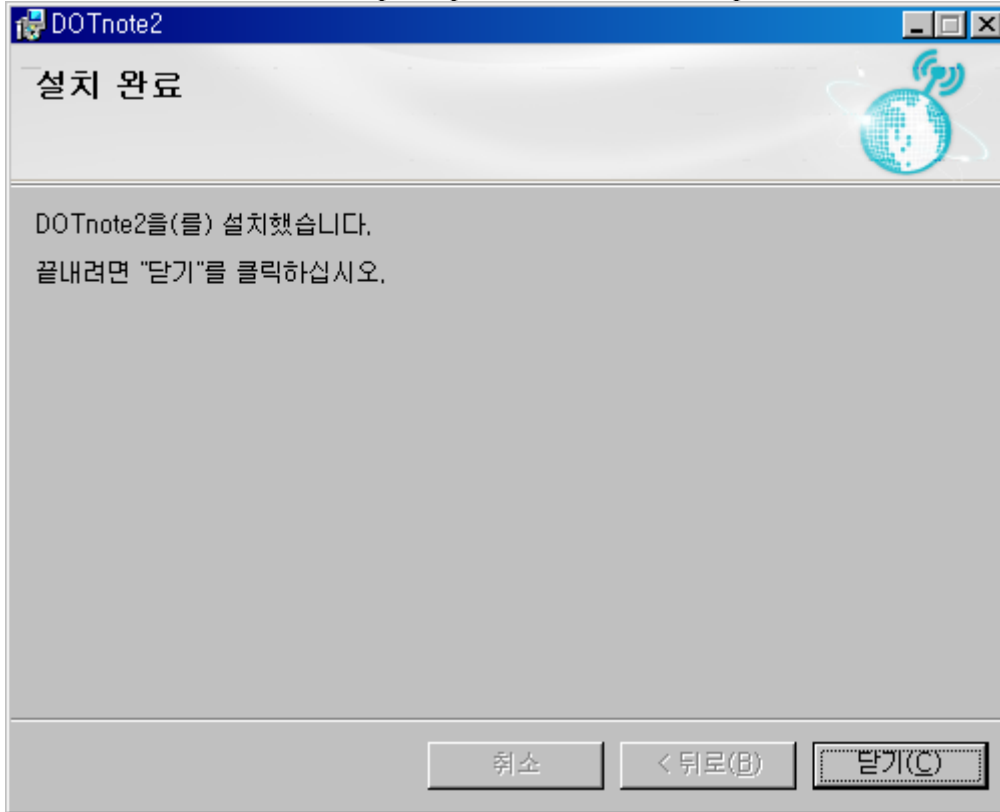
CONFIDENTIAL		Document No: <i>PG-CM- UserManual</i>
Title: <ADP601> Users Manual		Revision: 20111230
Prepared by: Taeyoung Ko		Date: 2012.01.04.

D. Select "next" once again



CONFIDENTIAL		Document No: PG-CM- UserManual
Title: <ADP601> Users Manual		Revision: 20111230
Prepared by: Taeyoung Ko		Date: 2012.01.04.

E. Wait until the installation is complete, press the "close" to complete the installation.



3.2 Streaming test

A. One of the following methods to run the application using DOTnote

i. On the desktop, double click on the "DOTnote" icon

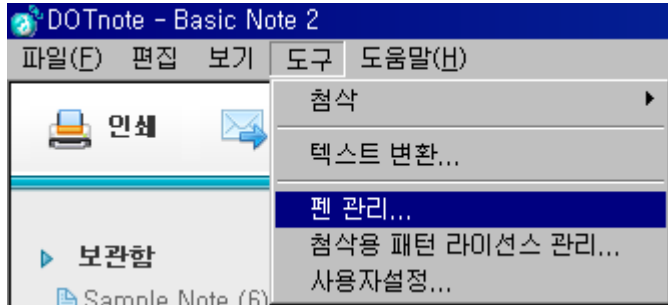


ii. start -> program -> Tstudy -> DOTnote -> DOTnote select



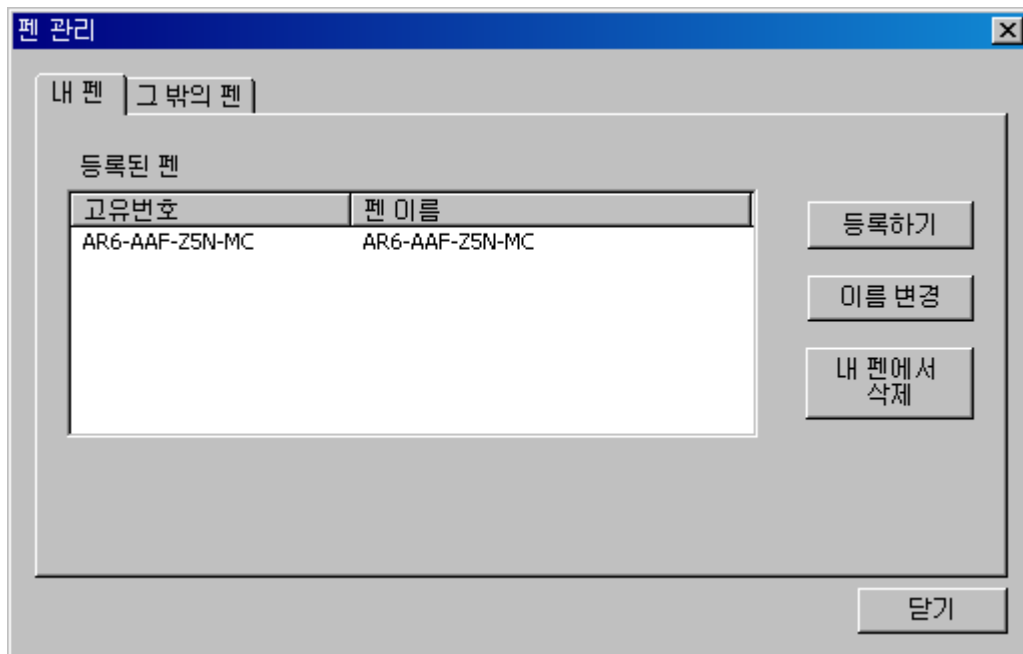
CONFIDENTIAL		Document No: PG-CM- UserManual
Title: <ADP601> Users Manual		Revision: 20111230
Prepared by: Taeyoung Ko		Date: 2012.01.04.

B. menu -> Tools -> Pen manager



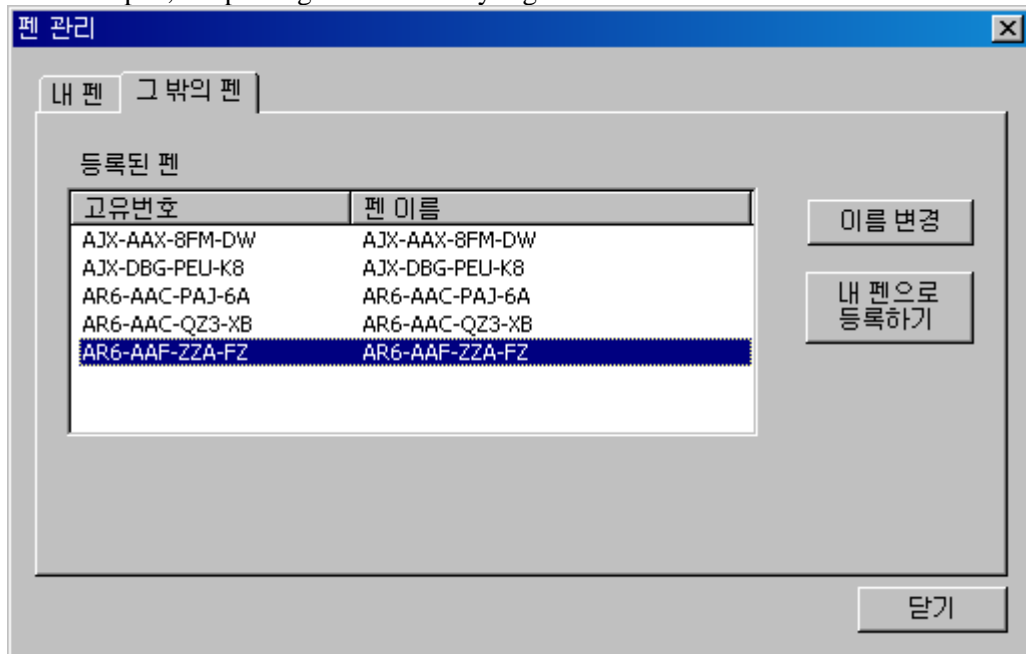
C. Run the test pen and PC-to-Bluetooth pairing

D. If the test is set to notes, pen tips , “My Pen” Tab in the test pen Pen ID is shown.



CONFIDENTIAL		Document No: PG-CM- UserManual
Title: <ADP601> Users Manual		Revision: 20111230
Prepared by: Taeyoung Ko		Date: 2012.01.04.

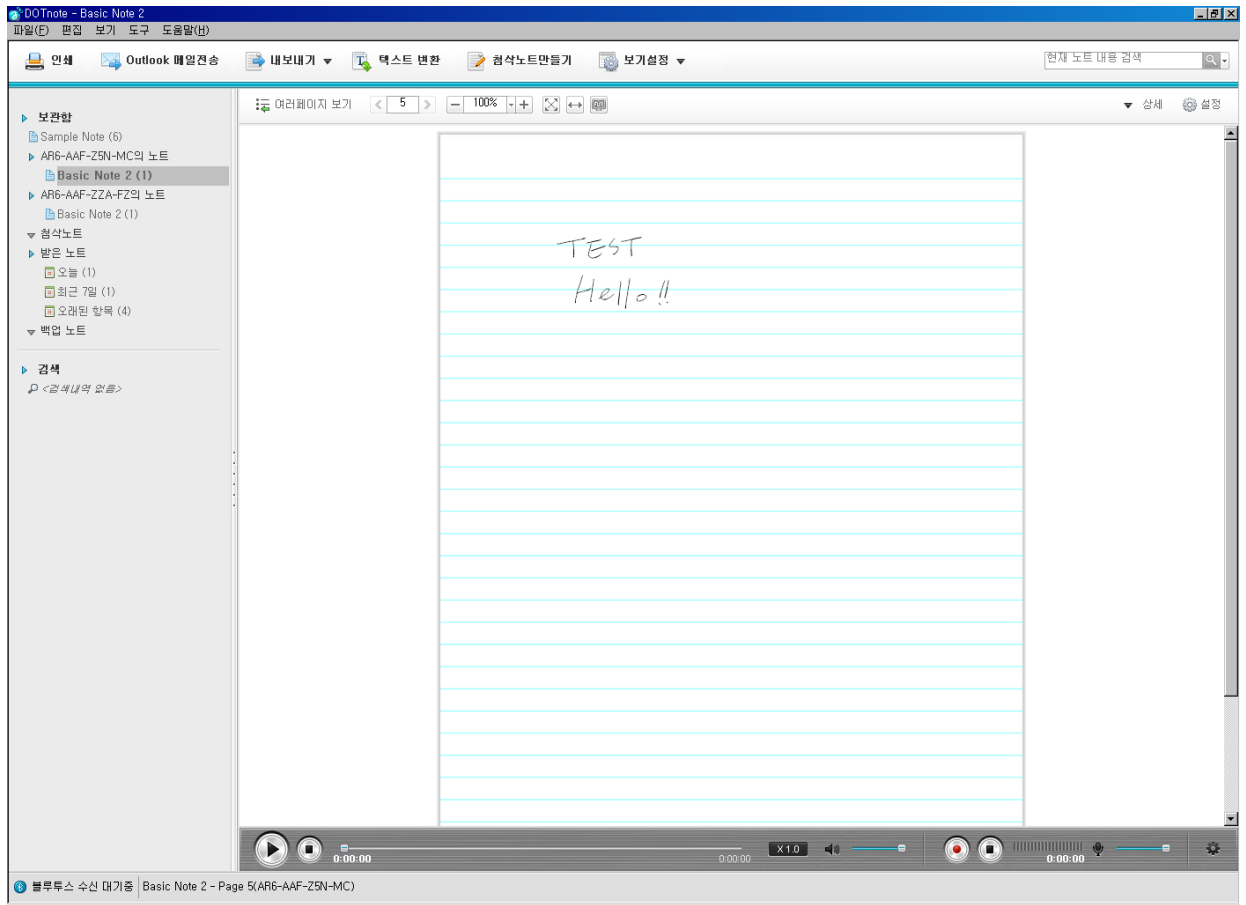
- i. If you don't see the Pen ID is that out of the pen "tab," Pen, make sure that the ID and select the pen, the pen register "after" my registration button.



- ii. "other pen" Pen ID does not exist, you should check that the Bluetooth pairing this exactly once again
- E. "Pen manager" Dialog box, use the "close" button to exit.

F. Note to use a pen to write, as shown below appears on the screen DOTnote.

CONFIDENTIAL		Document No: <i>PG-CM- UserManual</i>
Title: <ADP601> Users Manual		Revision: 20111230
Prepared by: Taeyoung Ko		Date: 2012.01.04.



CONFIDENTIAL		Document No: <i>PG-CM- UserManual</i>
Title: <ADP601> Users Manual		Revision: 20111230
Prepared by: Taeyoung Ko		Date: 2012.01.04.

4 BATTERY CHARGING

This manual describes how to charge the battery .

4.1 Preparation

A. USB CABLE(USB A to micro B 1m)



4.2 Charging Method

A. USB CABLE to the connector on the ADP-601 now connect to PC.



CONFIDENTIAL	 Pen Generations	Document No: <i>PG-CM- UserManual</i>
Title: <ADP601> Users Manual		Revision: 20111230
Prepared by: Taeyoung Ko		Date: 2012.01.04.

B. ADP-601 the colour of the LED when the discharge is red.



C. The colour of the LED ADP-601 charging is completed, green changes.



D. ADP-601 to remove it from the PC.

CONFIDENTIAL		Document No: <i>PG-CM- UserManual</i>
Title: <ADP601> Users Manual		Revision: 20111230
Prepared by: Taeyoung Ko		Date: 2012.01.04.

5 FIRMWARE UPGRADE

This manual explains manual about ADP601 firmware upgrade program.

USB CABLE to the connector on the ADP-601 now connect to PC.



5.1 Upgrade Steps

A. Firmware Upgrade Method 1

Firmware is automatically upgraded through this function.

A-1. First of all, a tester connects a target device, ADP601 , to a computer that upgrade program was installed.

Then, the tester can confirm the device's ID in dropdown control and selects the target device's ID.

A-2. Choose the device's ID and push the "Connect" button.

A-3. Before firmware upgrade starts, the tester configures a new package binary for upgrade through "File Open" button.

When the tester pushes the button "File Open", a dialog for file selection is popped up and then chooses the new package binary.

After finishing configuration completely, some parameters of the package binary are displayed in upgrade panel. And the tester confirms a status by message of process in "Control" panel.

A-4. After finishing the configuration, start firmware upgrade pushing a "Start Firmware Upgrade" button.

CONFIDENTIAL		Document No: PG-CM- UserManual
Title: <ADP601> Users Manual		Revision: 20111230
Prepared by: Taeyoung Ko		Date: 2012.01.04.

After finishing the firmware upgrade, all information of parameters is displayed in “Parameters” panel.

And the tester confirms a result not only by a message in “Control” panel’s status, but also by a message in “General Information” panel’s result.

There are 3 procedures for upgrade, full read eeprom, upgrade Infineon and upgrade Freescale. All procedures are continuously processed automatically.

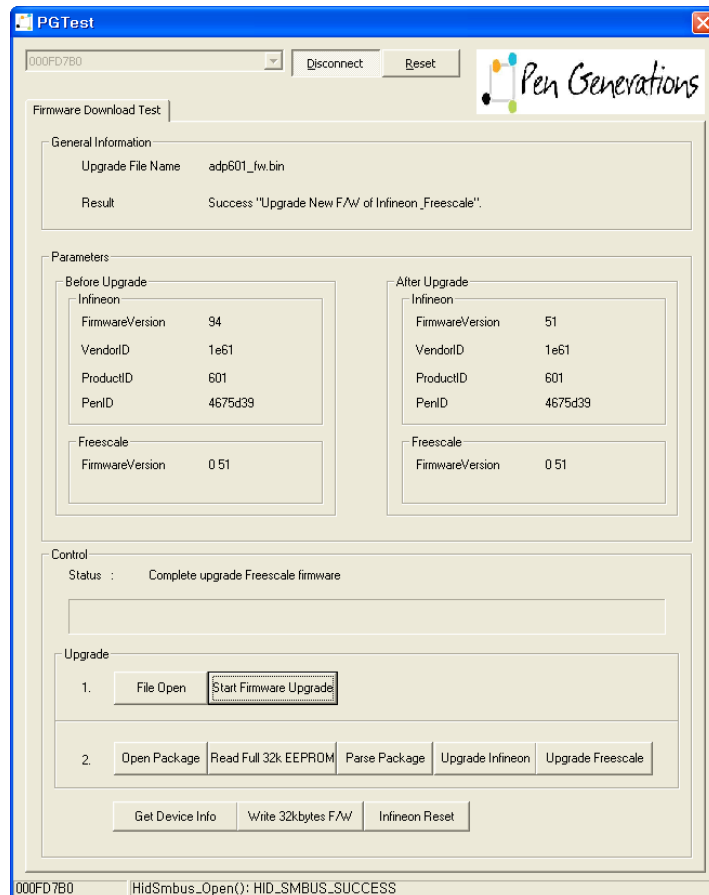


Figure 1. Result of Firmware Upgrade


B. Firmware Upgrade Method 2

This method provides for the tester to upgrade FW into DUT step by step.

B-1. First of all, a tester connects a target device, ADP601 , to a computer that Upgrade program was installed.

Then, the tester can confirm the device’s ID in dropdown control and selects the target device’s ID.

B-2. Choose the device’s ID and push the “Connect” button.

CONFIDENTIAL	 Pen Generations	Document No: <i>PG-CM- UserManual</i>
Title: <ADP601> Users Manual		Revision: 20111230
Prepared by: Taeyoung Ko		Date: 2012.01.04.

B-3. Before firmware upgrade starts, the tester configures a new package binary for upgrade through “Open Package” button.

When the tester pushes the button “Open Package”, a dialog for file selection is popped up and then chooses the new package binary.

After finishing configuration completely, some parameters of the package binary are displayed in upgrade panel. And the tester confirms a status by message of process in “Control” panel.

B-4 . Read a full 32k EEPROM data

When ADMLib parses the new package, a full 32k EEPROM data is needed. So in order the upgrade, the tester reads a full 32k EEPROM data through this function.

B-5. Parse a new Package with read data

This function will extract the new firmwares for Infineon and Freescale by using the read data.

B-6. Upgrade a new Infineon

This function will upgrade a new Infineon firmware.

B-7. Upgrade a new Freescale

This function will upgrade a new Freescale firmware.

FCC Information

This device complies with Part 15 of the FCC Rules. Operation is subject to the following two conditions:

- (1) This Device may not cause harmful interface, and
- (2) This device must accept any interference received, including interference that may cause undesired operation.

INFORMATION TO THE USER

This equipment has been tested and found to comply with the limits for a Class B digital device, pursuant to part 15 of the FCC Rules. These limits are designed to provide reasonable protection against harmful interference in a residential installation. This equipment generates, uses and can radiate radio frequency energy and, if not installed and used in accordance with the instructions, may cause harmful interference to radio communications. However, there is no guarantee that interference will not occur in a particular installation. If this equipment does cause harmful interference to radio or television reception, which can be determined by turning the equipment off and on, the user is encouraged to try to correct the interference by one more of the following measures:

- Reorient or relocate the receiving antenna.
- Increase the separation between the equipment and receiver.
- Connect the equipment into an outlet on a circuit different from that to which the receiver is connected.
- Consult the dealer or an experienced radio/TV technician for help.

WARNING

Any changes or modifications not expressly approved by the manufacturer could void the user's authority to operate the equipment.

"CAUTION: Exposure to Radio Frequency Radiation.

Antenna shall be mounted in such a manner to minimize the potential for human contact during normal operation. The antenna should not be contacted during operation to avoid the possibility of exceeding the FCC radio frequency exposure limit.