

Anova Quick Start Guide  
North America — Front Side

Material:  
Ink: Digital + 1 spot ink



Process  
CMYK



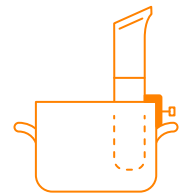
PMS 151C

100.0

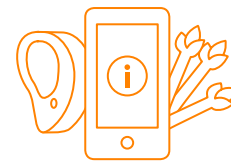
100.0

ANOVA | **NANO**  
**PRECISION  
COOKER**  
A SOUS VIDE IMMERSION CIRCULATOR

QUICKSTART GUIDE



**01** | DOWNLOAD THE  
ANOVA CULINARY APP



Connect your Anova to get started!

DISCOVER THOUSANDS OF RECIPES AND GUIDES

SAVE YOUR FAVORITE RECIPES

INSTANTLY SHARE YOUR CREATIONS

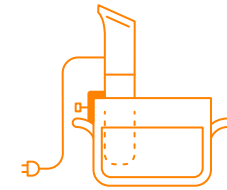
all on the **Anova Culinary** app.



**02** | WHAT YOU  
NEED



Sealable  
bags



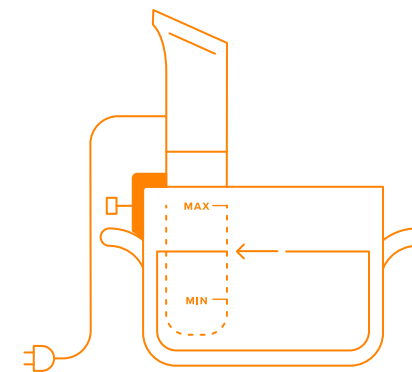
Your pot  
(any pot)



Something  
to cook

GET INSPIRED WITH TASTY RECIPES IN THE ANOVA APP

**03** | SETTING  
UP



**CLAMP** cooker to  
the side of any pot.

**FILL** water between  
min & max line.

**PLUG IN** Anova.

NOT SURE WHAT TEMPERATURE? FIND GUIDES IN OUR APP

**04** | GET  
COOKING



1

Place your food in a  
sealed bag, removing as  
much air as possible.



2

Submerge the bag in  
the pot and cook to your  
desired level of doneness.

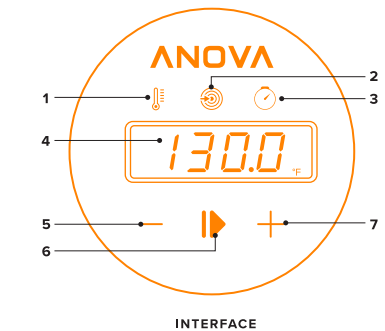


3

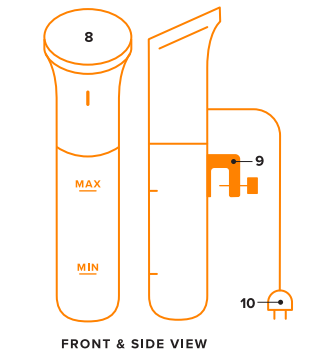
Remove your food from the  
bag and sear it in a hot pan  
for a crispy texture. Enjoy!

**SPECS AND KEYS**

- |                     |                      |
|---------------------|----------------------|
| 1 Current Temp      | 8 Start/Stop         |
| 2 Target Temp       | 7 Increase Temp/Time |
| 3 Timer             | 8 Interface          |
| 4 Temp/Time Display | 9 Clamp              |
| 5 Reduce Temp/Time  | 10 Plug              |



INTERFACE



FRONT & SIDE VIEW

Anova Quick Start Guide  
North America — Back Side



Process  
CMYK



PMS 151C

100.0

100.0



@PHILATRON

JOIN THE COMMUNITY



See what others are making and share your sous vide creations with the #anovafoodnerd family.



ANOVA CULINARY

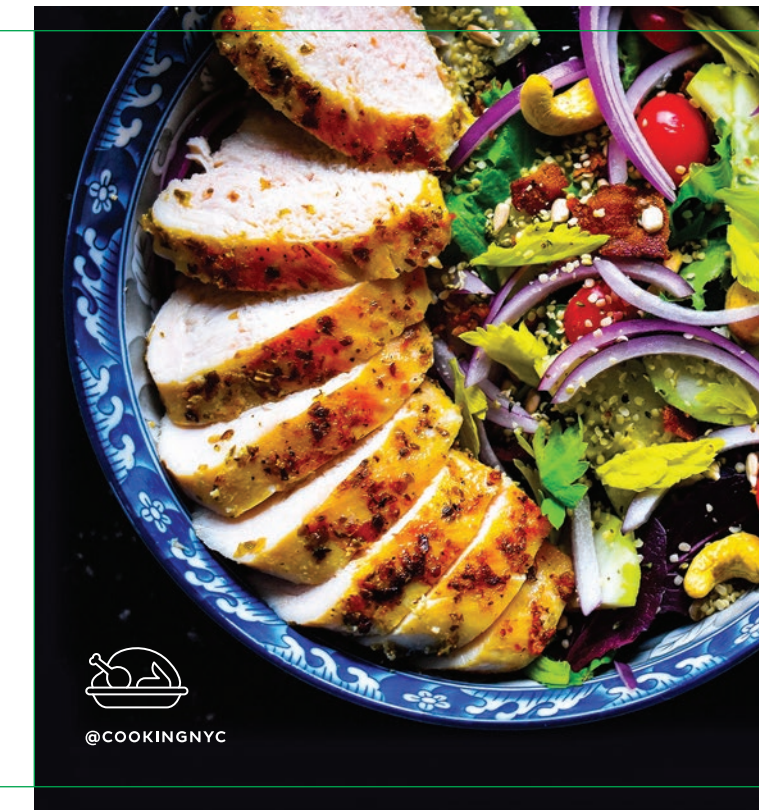


@GAVINEDWARDCOOKS

NEED MORE HELP?

Contact support at:  
[support@anovaculinary.com](mailto:support@anovaculinary.com)

To best care for your Anova Nano please go to:  
[anovaculinary.com/nanocare](https://anovaculinary.com/nanocare)



@COOKINGNYC

IMPORTANT SAFEGUARDS

To Reduce The Risk Of Fire, Electric Shock, Or Injury:

- Do not use with damaged cord or plug.
- If appliance is not working as it should, has been dropped, damaged, left outdoors, or dropped into water, return it to a service center before using.
- Do not use outdoors.
- Unplug the electrical cord when not in use and before servicing.
- Do not allow to be used as a toy. Close attention is necessary when used by or near children.
- Use only as described in this manual. Use only manufacturer's recommended attachments.
- Do not pull or carry by cord or use cord as a handle.
- Do not use extension cords or outlets with inadequate current carrying capacity.
- Do not unplug by pulling on cord. To unplug, grasp the plug, not the cord.
- Do not handle plug or appliance with wet hands.
- Do not put any object into openings. Do not use with any opening blocked; keep free of dust, lint, hair, and anything that may reduce airflow.
- Do not use appliance in flammable or combustible liquids such as gasoline, or use in areas where they may be present.
- Store your appliance indoors in a cool, dry area.

Always Exercise Basic Safety Precautions When Operating Electrical Appliances, Including The Following:

- Read all instructions, including the instructions you're reading now.
- Do not touch hot surfaces.
- To protect against electrical shock, do not immerse cord, plug, or the device's electrical components in water or other liquid.
- Close supervision is necessary when appliance is used by or near children.
- Unplug device to cool before assembling or disassembling. Allow device to cool before assembling or disassembling.
- Do not operate any appliance with a damaged cord or plug. Do not operate the appliance if it has malfunctioned or been damaged in any manner. Contact Anova Support at [support@anovaculinary.com](mailto:support@anovaculinary.com) for assistance.
- The use of accessory attachments is not recommended by the appliance manufacturer and may cause injuries.
- Do not use outdoors.
- Do not let cord hang over the edge of the table or counter. Do not let the cord come in contact with hot surfaces.
- Do not place the device on or near hot gas or electric burner, or in a heated oven.
- Use extreme caution when moving an appliance containing hot liquids.
- To operate, plug cord into the wall outlet. To disconnect, press "stop" on the device interface or in the Anova Culinary App, then remove plug from wall outlet.
- Do not use appliance for anything other than its intended use.
- Do not open bottom enclosure while device is plugged in or operating as there are heating elements and moving parts.
- Do not use directly on a granite or marble surface. Always place an insulating surface between the hot pot and granite or marble surface.

SAVE THESE INSTRUCTIONS