

ANOVA PRO

PRECISION
COOKER

USER GUIDE



PRO

ANOVA PRECISION COOKER PRO

THE NEXT LEVEL OF PRECISION

At Anova our mission has always been to create products that allow everyone to cook like a pro. This is why we developed the Anova Precision Cooker Pro. It is our most powerful and most accurate precision cooker we have ever created.

We have been constantly listening to our users feedback as to what device they wanted. The Pro is that product, it was created to allow our home cooks to take their precision cooking to the next level.

In this manual you will find everything you need to know, but as always our white glove customer service is at your fingertips through our Anova App.

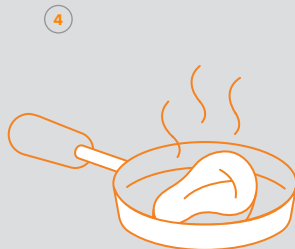
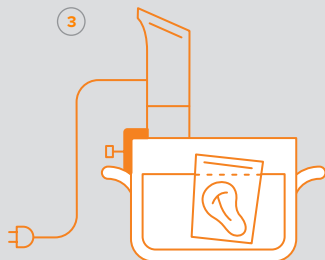
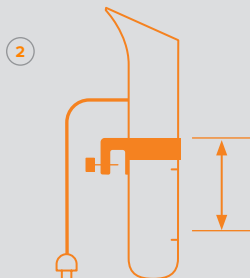
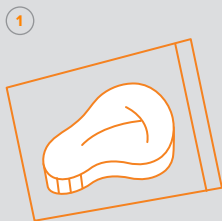
USER GUIDE
CONTENTS

- 1 **SETTING UP**
- 2 **CONNECTION**
- 3 **INTERFACE**
- 4 **SMART HOME**
- 5 **PRECISION**
- 6 **CONTAINERS**
- 7 **DESIGN**
- 8 **CARE**
- 9 **SAFETY + WARRANTY**

SETTING UP

EASY TO GET STARTED

- 1 **ATTACH** Anova Pro to a pot or other heat-safe container by adjusting the clamp height and clamp opening
- 2 **FILL** your container with water between the min and max line
- 3 **PLUG IN** Anova Pro and place your sealed food in the water bath
- 4 **CONTROL** the device with the manual settings or Anova Culinary App



CONNECTION

DOWNLOAD THE APP



Connect your Anova to get started!

DISCOVER THOUSANDS OF RECIPES AND GUIDES

SAVE YOUR FAVORITE RECIPES

INSTANTLY SHARE YOUR CREATIONS

all on the **Anova Culinary** app.



CONNECTION

COOK FROM ANYWHERE

The Anova Precision Cooker Pro comes equipped with 2.4 Ghz Wi-Fi. This means you can monitor your cook while you are away from home among other features.

RECIPES: Create and save your own recipes. Share your recipes with the community

MULTICOOK: Control multiple precision cookers at once

ICE BATH: Set up your cooker with a cold bath of ice and then remotely start it so your food is ready right when you arrive home from work.

OTA UPDATES

INTERFACE

KEY + GUIDE

SETTING UP A COOK WITH THE INTERFACE

Press the Target Temperature icon on the interface

Press the +/- buttons to increase or decrease temperature

Press the Timer icon on the interface

Press the +/- buttons to increase or decrease time

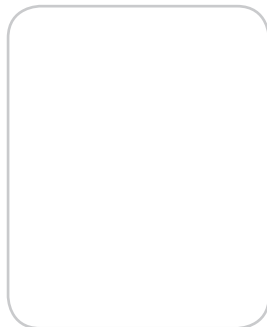
Press the Start button

STARTING A COOK REMOTELY FROM THE APP

Download and open the Anova Culinary App

Choose either an existing guide, recipe, or one of your own previously saved recipes

Press Start within the app



Current Temperature

Target Temperature

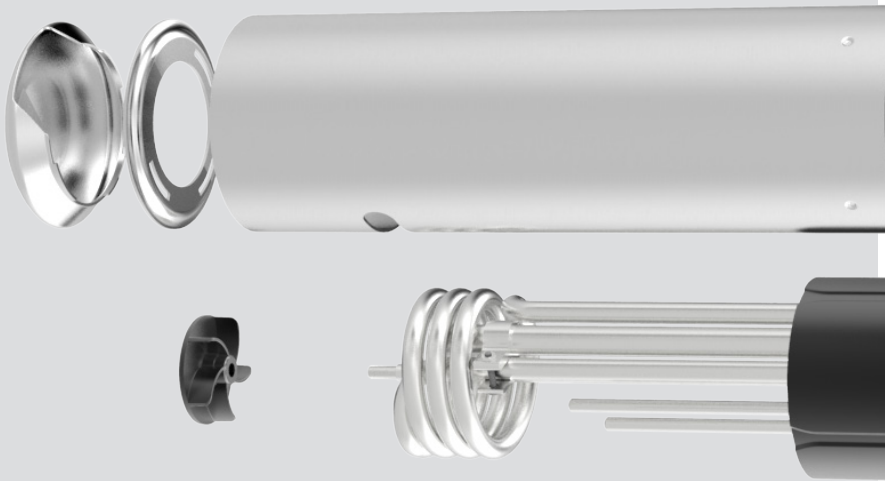
Timer

Start/Stop

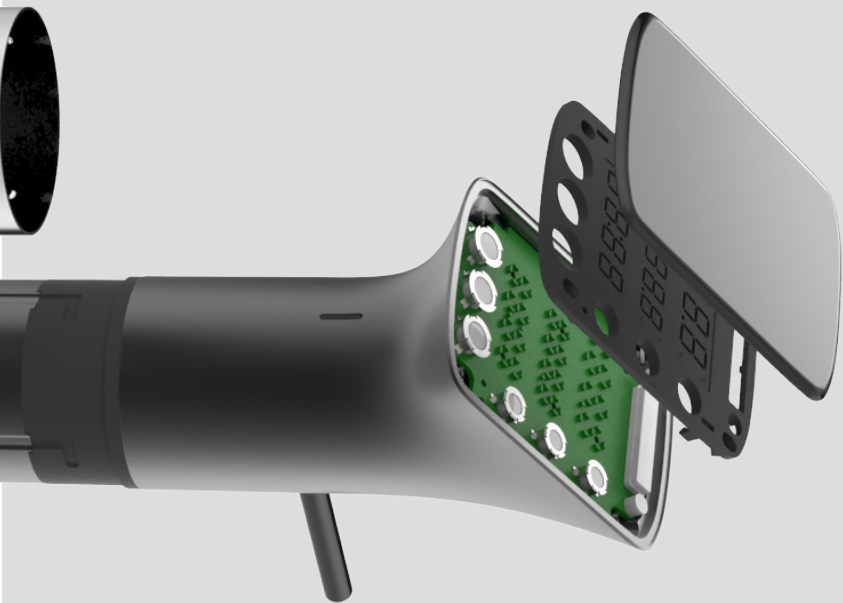
Temperature/Time Increase

Temperature/Time Decrease





— PRO





PRO

SMART HOME

AMAZON + GOOGLE HOME

The Anova Precision Cooker Pro comes equipped with support for Amazon Echo with Alexa and Google Home smart products. This enables you to.....

PRECISION

THE MOST PRECISE EVER

0.05°C Precision is achieved by...

This is important because...

— PRO



CONTAINER SIZE

POWER + FLOW RATE

The Pro is equipped to cook for containers as big as 60L / 15G. This is achieved by a 1200W heater in combination with a powerful 12L/Minute flow rate.

Within the app you can adjust and control the flow rate and heating power depending on the size of your container.

When using multiple sous vide devices together, we recommend lowering the heating power to ensure you do not blow the circuit breaker during warm up cycles.



Infographics of container sizes and
flow rates required to maintain flow



PRO

PREMIUM MATERIALS

MATERIAL QUALITY

Designed to the highest quality the Pro is constructed using a teflon coated housing and stainless steel skirt providing a clean professional look all while being the most robust cooker available.

COMMUNITY
COMMUNITY

The Anova Precision Cooker Pro

See what others are making and share your sous vide creations with the #anovafodnerd family.



ANOVA CULINARY

CARE

CARE

1. Remove the skirt and end cap (see this article for disassembly instructions)
2. Place the skirt and end cap in the dishwasher or wash them in the sink with dish soap
3. VINEGAR BATH
4. Dilute equal parts water and white vinegar in a small pot
5. Place your cooker in the pot
6. Set the temperature to 140°F/60°C and let your cooker heat the liquid
7. Cleaning is complete once the cooker has reached temperature
8. This method is best for cleaning build up on your cooker. Build up is normal and is due to mineral deposits mostly from tap water. Build up can be brown, black, or even green depending on your water pipes and water source.
9. CLEANING THE INSIDES
10. Use a tooth brush with a mild cleaner like dish soap to scrub the circulator, impeller, heating coil, pump shaft, and sensor
11. Rinse with a damp cloth
12. When cleaning the unit make sure you do not bend the impeller shaft. If you do it may rub against the steel skirt after you reassemble it.
13. CLEANING THE DISPLAY
14. Dampen a microfiber cloth
15. Wipe the display gently
16. Dry gently with a dry microfiber cloth

SAFETY

SAFETY

To Reduce The Risk Of Fire, Electric Shock, Or Injury:

1. Do not use with damaged cord or plug.
2. If appliance is not working as it should, has been dropped, damaged, left outdoors, or dropped into water, return it to a service center before using.
3. Do not use outdoors.
4. Unplug the electrical cord when not in use and before servicing.
5. Do not allow to be used as a toy. Close attention is necessary when used by or near children.
6. Use only as described in this manual. Use only manufacturer's recommended attachments.
7. Do not pull or carry by cord or use cord as a handle.
8. Do not use extension cords or outlets with inadequate current carrying capacity.
9. Do not unplug by pulling on cord. To unplug, grasp the plug, not the cord.
10. Do not handle plug or appliance with wet hands.
11. Do not put any object into openings. Do not use with any opening blocked; keep free of dust, lint, hair, and anything that may reduce airflow.
12. Do not use appliance in flammable or combustible liquids such as gasoline, or use in areas where they may be present.
13. Store your appliance indoors in a cool, dry area.

Always Exercise Basic Safety Precautions When Operating Electrical Appliances, Including The Following:

1. Read all instructions. Including the instructions you're reading now.
2. Do not touch hot surfaces.
3. o protect against electrical shock, do not immerse cord, plugs, or the device's electrical components in water or other liquid.
4. Close supervision is necessary when appliance is used by or near children.
5. Unplug from outlet when not in use and before cleaning. Allow device to cool before assembling or disassembling.
6. Do not operate any appliance with a damaged cord or plug. Do not operate the appliance if it has malfunctioned or been damaged in any manner. Contact Anova Support at supporanovaculinary.com for assistance.
7. The use of accessory attachments is not recommended by the appliance manufacturer and may cause injuries.
8. Do not use outdoors.
9. Do not let cord hang over the edge of the table or counter. Do not let the cord come in contact with hot surfaces.
10. Do not place the device on or near hot gas or electric burner, or in a heated oven.
11. Use extreme caution when moving an appliance containing hot liquids.
12. To operate, plug cord into the wall outlet. To disconnect, press 'stop' on the device interface or in the Anova Culinary App, then remove plug from wall outlet.
13. Do not use appliance for anything other than its intended use.
14. Do not open bottom enclosure while device is plugged in or operating as there are heating elements and moving parts.
15. Do not use directly on a granite or marble surface. Always place an insulating surface between the hot pot and granite or marble surface.

WARRANTY

WARRANTY

One (1) Year Warranty Provision

The following Warranty provisions shall apply to products sold by Anova ("Seller") to the entity shown as buyer ("Buyer") on Seller's invoice.

Initial Warranty. Seller warrants to the Buyer that the products manufactured by the seller are free from defects in material and workmanship for a period not to exceed one (1) year, from the date the product is received by Buyer from the Seller (the "initial warranty").

Exclusions: The Initial Warranty does not include damage to the product resulting from accident, misuse, the use of a plug converter or transformer, improper installation or operation, unauthorized or improper repair, replacement or alteration (including but not limited to repairs, replacements, or alterations made or performed by persons other than Seller's employees or authorized representatives), failure to provide proper maintenance, unreasonable use or abuse of the product, or failure to follow written instructions or operating instructions. Water damage and use of deionized water is not covered on warranty. Buyer must return the product's record of purchase to the seller or one of Seller's authorized representatives within 365 days of the date the product is received by Buyer from Seller in order to make a claim under the Initial Warranty.

Governing Law. The Warranty Provisions and all questions relating to their validity, interpretation, performance, and enforcement shall be construed in accordance with, and shall be governed by, the substantive laws of the State of Texas.

Shipping. Seller will arrange and pay for shipping and handling charges for the unit to be returned to the Seller. Seller will arrange and pay for shipping and handling for the return of the unit to the Buyer.

Commercial Usage. This system is not covered under warranty if used in commercial environments.

PRO



FCC/IC COMPLIANCE / TM / WARRANTY

This device complies with part 15 of the FCC Rules. Operation is subject to the following two conditions: (1) This device may not cause harmful interference, and (2) this device must accept any interference received, including interference that may cause undesired operation.

Caution: Changes or modifications to this unit not expressly approved by the party responsible for compliance could void the user's authority to operate the equipment.

This device contains licence-exempt transmitter(s)/receiver(s) that comply with Innovation, Science and Economic Development Canada's licence-exempt RSS(s). Operation is subject to the following two conditions:

- (1) This device may not cause interference.
- (2) This device must accept any interference, including interference that may cause undesired operation of the device.

L'émetteur/récepteur exempt de licence contenu dans le présent appareil est conforme aux CNR d'Innovation, Sciences et Développement économique Canada applicables aux appareils radio exempts de licence.

L'exploitation est autorisée aux deux conditions suivantes :

- 1) L'appareil ne doit pas produire de brouillage;*
- 2) L'appareil doit accepter tout brouillage radioélectrique subi, même si le brouillage est susceptible d'en compromettre le fonctionnement.*

3) NOTE: This equipment has been tested and found to comply with the limits for a Class B digital device, pursuant to part 15 of the FCC Rules. These limits are designed to provide reasonable protection against harmful interference in a residential installation. This equipment generates, uses and can radiate radio frequency energy and, if not installed and used in accordance with the instructions, may cause harmful interference to radio communications. However, there is no guarantee that interference will not occur in a particular installation. If this equipment does cause harmful interference to radio or television reception, which can be determined by turning the equipment off and on, the user is encouraged to try to correct the interference by one or more of the following measure

- Reorient or relocate the receiving antenna.
- Increase the separation between the equipment and receiver.
- Connect the equipment into an outlet on a circuit different from that to which the receiver is connected.
- Consult the dealer or an experienced radio/TV technician for help.

To satisfy FCC&IC RF exposure requirements, a separation distance of 20 cm or more should be maintained between the antenna of this device and persons during device operation.

To ensure compliance, operations at closer than this distance is not recommended.

Les antennes installées doivent être situées de façon à ce que la population ne puisse y être exposée à une distance de moins de 20 cm. Installer les antennes de façon à ce que le personnel ne puisse approcher à 20 cm ou moins de la position centrale de l'antenne.

Apple, the Apple logo and iPhone are trademarks of Apple Inc., registered in the U.S. and other countries. App Store is a service mark of Apple Inc. Android, Google Play, and the Google Play logo are trademarks of Google Inc. The Bluetooth® word mark and logos are registered trademarks owned by the Bluetooth SIG, Inc. and any use of such marks is under license. All other trademarks and trade names are properties of their respective owners.

Precision™ is a trademark of Anova Applied Electronics, Inc. ©2018 Anova Applied Electronics, Inc. San Francisco, CA, US | Stockholm, SE. All Rights Reserved.

System Requirements:

iOS 9.0+, iPhone 5s or later, or
Android 6.0+

LIMITED WARRANTY.

Full details available at
anovaculinary.com/warranty