

Shanghai Anviz Technology Co.,Ltd.

T5

Fingerprint & RFID Reader

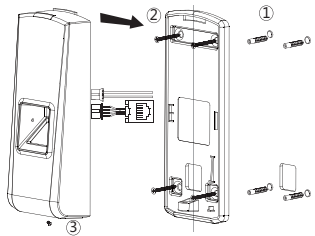
**ANVIZ**<sup>®</sup>

## Package list

- 1 Reader    2 Instruction Package    3 Accessory Package    4 Connector Jack



## Installation Diagram



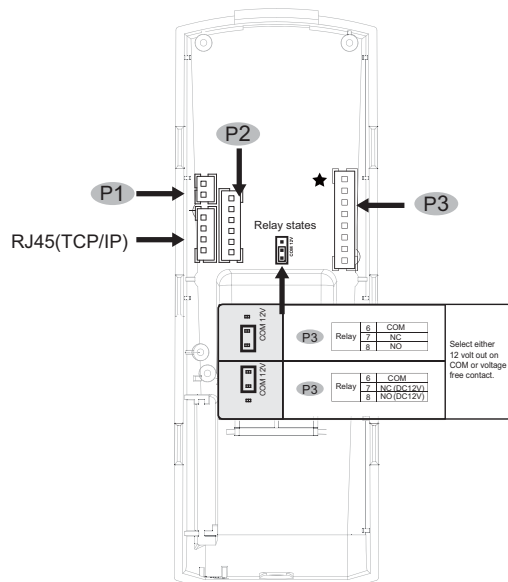
## Installation Steps:

- 1 Drill holes in the wall follow the hole position on back panel
- 2 Install and fix back panel, connect related cables
- 3 Fix access control reader

## Wiring Instruction



The interface marked with ★ for specific models, Please according to the practical device to wiring.



P1			
Function	PIN	Cable Color	Description
Power	1	Red	DC12V
	2	Black	GND

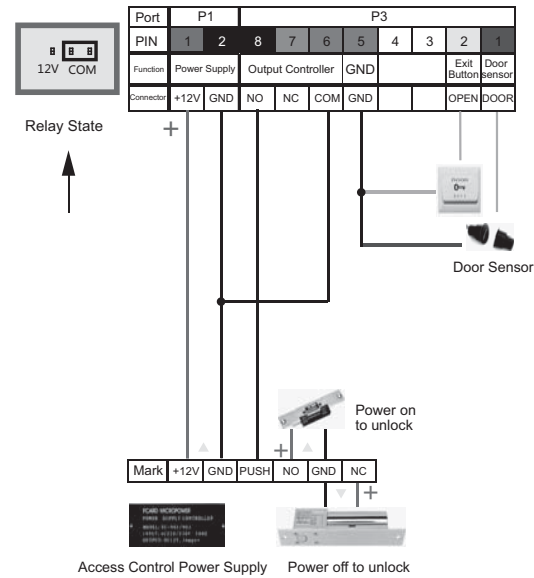
P2			
Function	PIN	Cable Color	Description
Wiegand Output	1	Green	Wiegand DATA0 Output
	2	White	Wiegand DATA1 Output
	3	Black	GND
RS485	4	Yellow	RS485A
	5	Purple	RS485B
	6	Black	GND

★ P3			
Function	PIN	Cable Color	Description
Door Sensor	1	Purple	Trigger Input
	2	Yellow	Trigger Input
	3	White	
	4	White	
GND	5	Black	GND
	6	Green	COM
Relay	7	Orange	NC
	8	Blue	NO

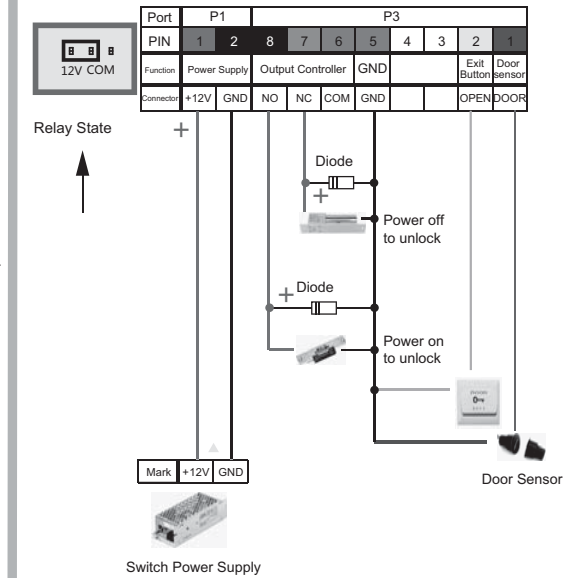


**Important notice:** Please carefully follow this wiring diagram, If the reader gets damaged by incorrect wiring then your warranty will be void.

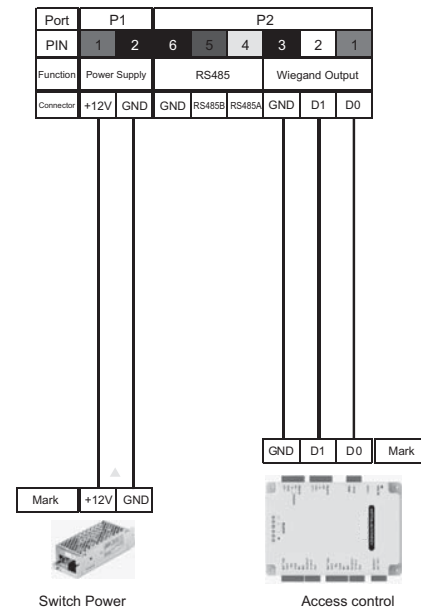
## Access Control Reader &amp; Power Supply



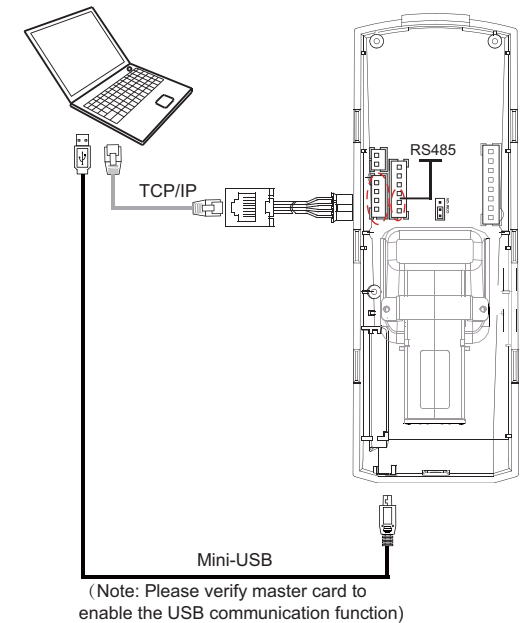
## Access Control Reader &amp; Switch Power Supply



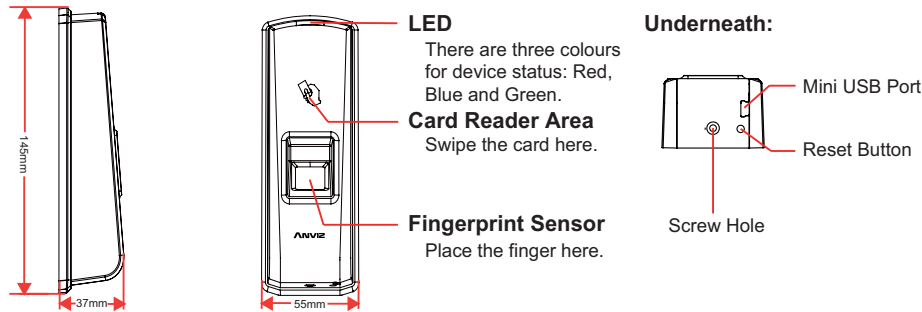
## Access Control Reader &amp; Controller



## Communicate with PC

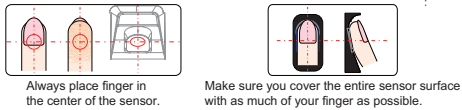


## Reader Appearance



## Illustration for placing finger

- **Correct method** (Straighten your finger and then place it on the sensor ensuring the finger is down flat and covers the entire sensor window):



- **Incorrect method :**



## Operation Guide

- **Power On:**  
DC 12V supply the power for device. Blue LED flashes fast and Fingerprint Sensor lights with beeps. There are 4 cards in the packing: Enroll Card, Delete Card, User Card \* 2

- **Registration User:**

- **Add Fingerprint Only: (Operation Steps show as figure 1.1)**

After registered you can continue register another user or swipe Enroll Card save and exit.

Notice: When place finger, Red LED flashes with two long beeps means the finger have been registered.

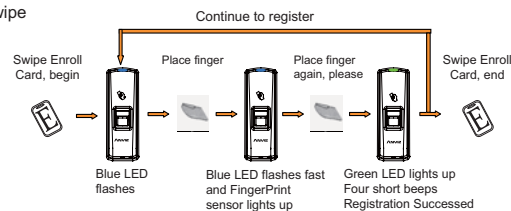


Figure 1.1

- **Add Card Only: (Operation Steps show as figure 1.2)**

After registered you can continue register another user or swipe Enroll Card save and exit.

Notice: When swipe card, Red LED flashes twice with two long beeps means the User Card have been registered.

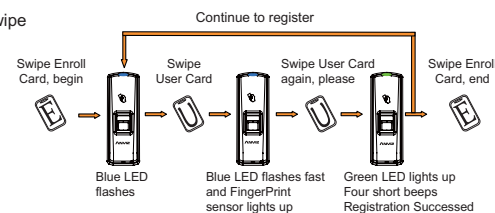


Figure 1.2

- **Add Card+Fingerprint: (Operation Steps show as figure 1.3)**

After registered you can continue register another user or swipe enroll card save and exit.

Notice: When swipe card, Red LED flashes twice with two long beeps means the User Card have been registered.

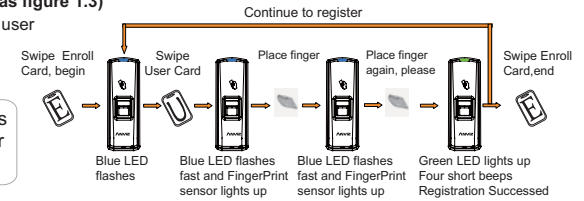


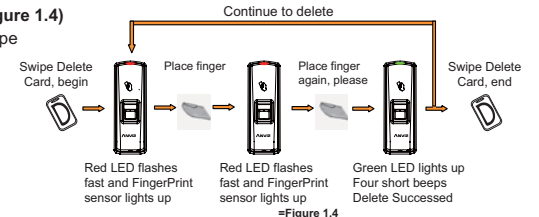
Figure 1.3

- **Delete User:**

- **Delete fingerprint only: (Operation Steps show as figure 1.4)**

After delete you can continue delete another user or swipe Delete Card save and exit.

Notice: When place finger, Red LED flashes with long beep means the fingerprint does not exist in the device.



=Figure 1.4

- **Delete Card / Card+Fingerprint: (Operation Steps show as figure 1.5)**

After delete you can continue delete another user or swipe Delete Card save and exit.

Notice: When swipe card, Red LED flashes with long beep means the fingerprint does not exist in the device.

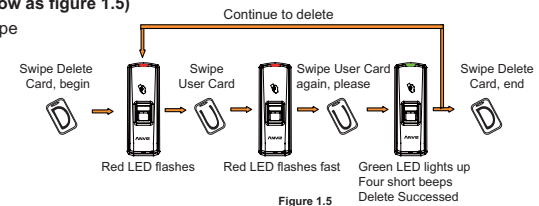
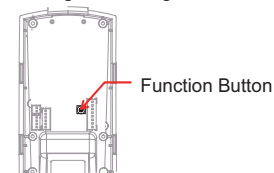


Figure 1.5

## Function button

- **Function Button**

Press the button until heard beeps, that eliminate Enroll Card and Delete Card information in the device. After that **MUST** register management cards (Enroll Card and Delete Card) to run the machine.



Notice: The operation will not delete any user data stored in the device.

- **Register Management Cards (Enroll Card and Delete Card)**

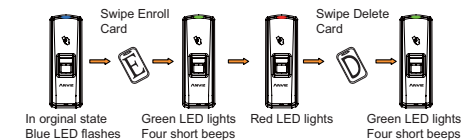


Figure 1.6

This equipment has been tested and found to comply with the limits for a Class B digital device, pursuant to part 15 of the FCC Rules. These limits are designed to provide reasonable protection against harmful interference in a residential installation. This equipment generates, uses and can radiate radio frequency energy and, if not installed and used in accordance with the instructions, may cause harmful interference to radio communications. However, there is no guarantee that interference will not occur in a particular installation. If this equipment does cause harmful interference to radio or television reception, which can be determined by turning the equipment off and on, the user is encouraged to try to correct the interference by one or more of the following measures:

- Reorient or relocate the receiving antenna.
- Increase the separation between the equipment and receiver.
- Connect the equipment into an outlet on a circuit different from that to which the receiver is connected.
- Consult the dealer or an experienced radio/TV technician for help.

Caution: Any changes or modifications to this device not explicitly approved by manufacturer could void your authority to operate this equipment.

This device complies with part 15 of the FCC Rules. Operation is subject to the following two conditions: (1) This device may not cause harmful interference, and (2) this device must accept any interference received, including interference that may cause undesired operation.

The device has been evaluated to meet general RF exposure requirement.

Company: U-tec Group Inc.

Address: 44292 Fremont Blvd, Fremont, CA 94538

Name: Kevin Zhu

Position: Product Manager

Tel: 844-439-8832

Fax: 844-439-8832

Email: [kevin@u-tec.com](mailto:kevin@u-tec.com)

Web: [www.u-tec.com](http://www.u-tec.com)