

---

# **AnyDATA.NET USB Modem (User Manual)**

SW-ADU-520-UG-V1.6E(SFERIA)

May 7. 2008

---



**AnyDATA CDMA Module Series Reference Design Specification****Copyright © 2000-2008 AnyDATA.NET Inc. All Rights Reserved.**

Any part of this document may not be distributed, communicated, reproduced or transmitted in any form or by any means, electronic or mechanical or otherwise, for any purpose, without the permission of AnyDATA Corp.

This document can be subjected to revision without further notice.

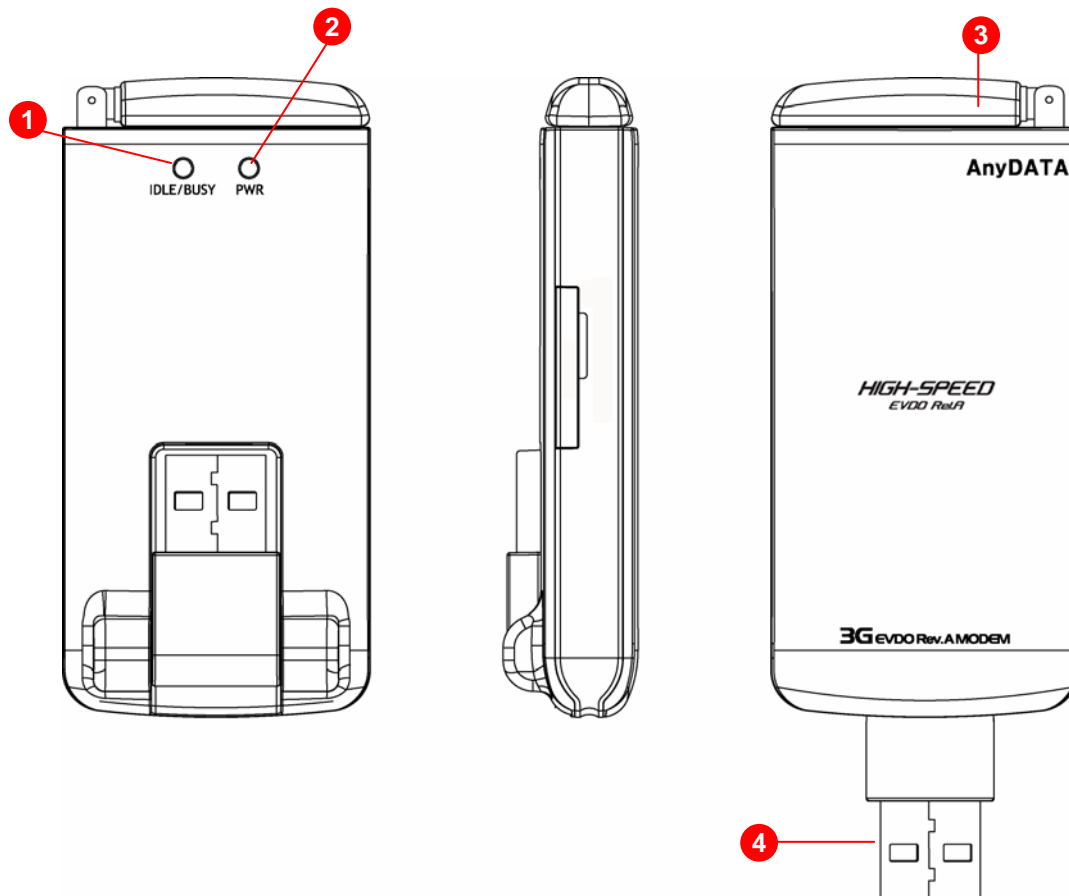
**Contact Address****AnyDATA.NET Inc.(Korea)**

DaeGo Bldg, 8 th., 1591-10  
Kwanyang-dong, Dongan\_gu,  
Anyang City, Kyunggi-do Korea.  
<http://www.anydata.co.kr>  
e-mail: [infodata@anydata.net](mailto:infodata@anydata.net)  
Rep:+82-31-380-7100  
Fax:+82-31-476-6021

## Contents

1. ADU-520 Features.....	4
2. LED Indicators.....	5
2.1 POWER .....	5
2.2 IDLE / BUSY .....	5
3. Program Installation.....	6
3.1 Introduction .....	6
3.2 Minimum System Requirement.....	6
3.2.1 PC Hardware.....	6
3.2.2 Operating System .....	6
3.3 Easy Wireless Net Installation and Uninstall In Windows 2000.....	7
3.4 Easy Wireless Net Installation and Uninstall In Windows XP .....	10
3.4.1 Installing Easy Wireless Net and Driver .....	10
3.4.2 Uninstalling Easy Wireless Net and Driver.....	14
3.5 Easy Wireless Net Installation and Uninstall In Windows Vista.....	16
3.5.1 Easy Wireless Net Installation .....	16
3.5.2 Uninstalling Easy Wireless Net and Driver.....	19
4. Using Easy Wireless Net Program .....	21
4.1 Running the program .....	21
4.2 Exiting the program.....	22
4.3 Screen Display of Easy Wireless Net.....	23
4.3.2 Description of each icon.....	24
4.3.3 Setting Environment.....	25
4.4 Connecting to the Internet .....	27
4.5 Disconnecting to the Internet.....	28
5. Troubleshooting.....	29

## 1. ADU-520 Features



### 1. IDLE/BUSY Lamp

Indicates the R-UIM terminal status

### 2. PWR Lamp

Indicates the Power supply conditions

### 3. Antenna

Do not place metal objects near the antenna for better communication.

### 4. USB Connector

Connects to a PC

## 2. LED Indicators

### 2.1 POWER

Mode	Descriptions
RED	Modem power on state
OFF	Modem power off state

### 2.2 IDLE / BUSY

Mode	Descriptions
GREEN	Success to network acquisition (Idle state)
BLUE	Data call is connected
BLUE BLINK	Not connected yet
OFF	No service or Searching the network

## **3. Program Installation**

### **3.1 Introduction**

This section describes step-by-step method to install ANYDATA.NET USB MODEM and Easy Wireless Net Software.

### **3.2 Minimum System Requirement**

#### **3.2.1 PC Hardware**

Recommend to use PC/Notebook at speed of 300 MHz or higher.

Minimum 233 MHz speed required, \* Intel Pentium/Celeron products,

AMD K6/Athlon/Duron products or compatible processors

Recommend to use 128MB RAM or higher

Minimum 64MB of memory must be used,

but in this case the performance will be degraded and certain features will be limited.

At least 100 MB of free hard disk space is required.

Motherboard or PCI card that supports USB.

Video adaptor with Super VGA (800 x 600) or higher resolution and Monitor

CD-ROM or DVD Optical Drive

Keyboard and Mouse

#### **3.2.2 Operating System**

Windows XP Home or Professional ( with Service Pack 2 )

Windows 2000 (with Service Pack 4 for optimal performances)

Windows Vista

< Recommended parameters >

Windows Update : Keep your computer up to date

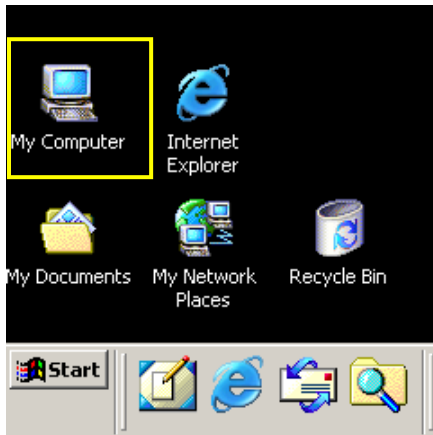
### 3.3 Easy Wireless Net Installation and Uninstall In Windows 2000

<Note> USB modem doesn't support Plug & Play in Windows 2000 and installation should be executed manually as described below,

Follow the steps to USB modem for Windows 2000.

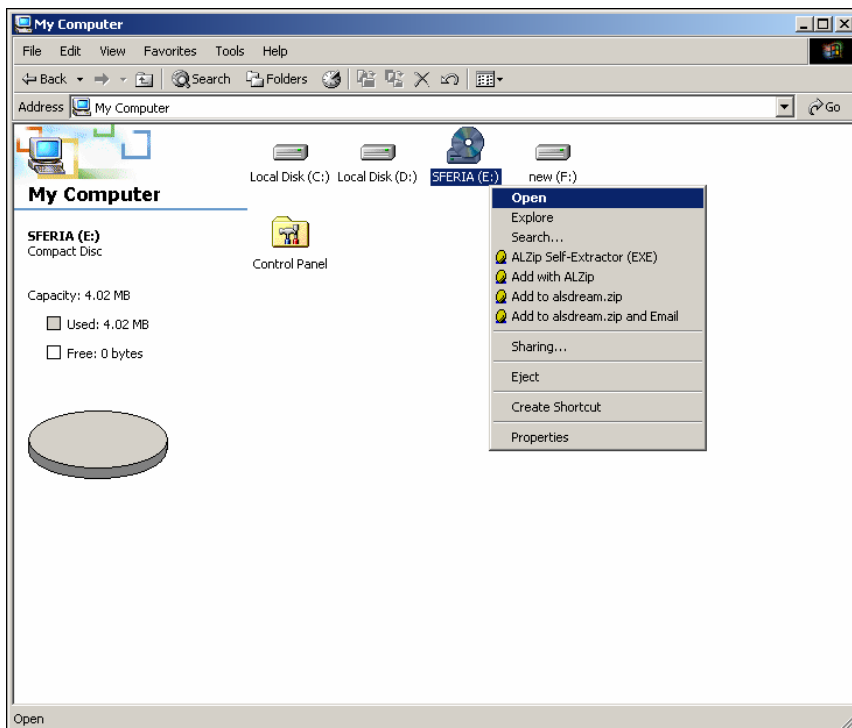
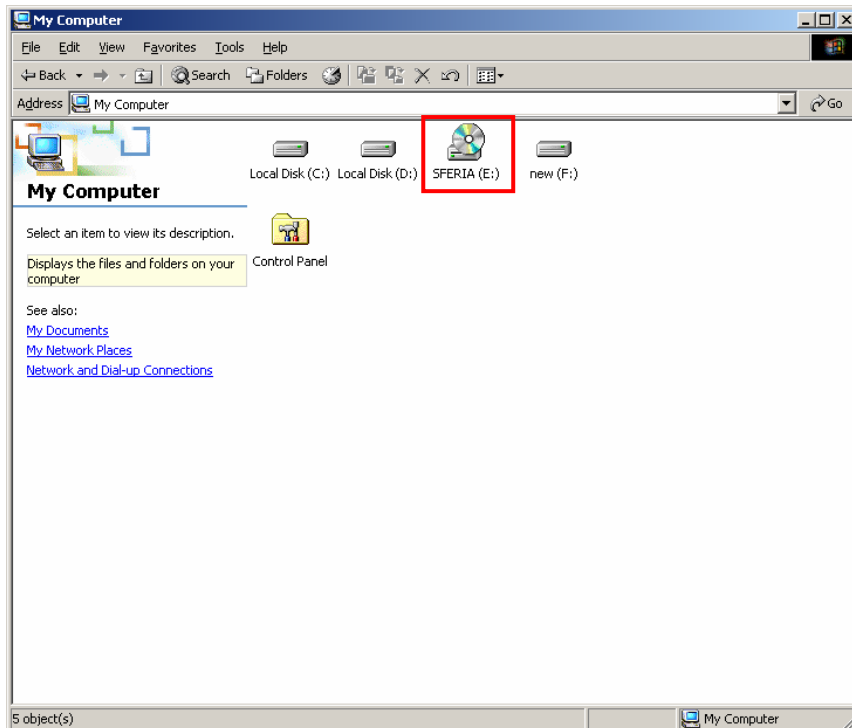
1. Connect the modem to USB Port and the modem will be recognized as a device of CD-ROM.

2. Open "My Computer"



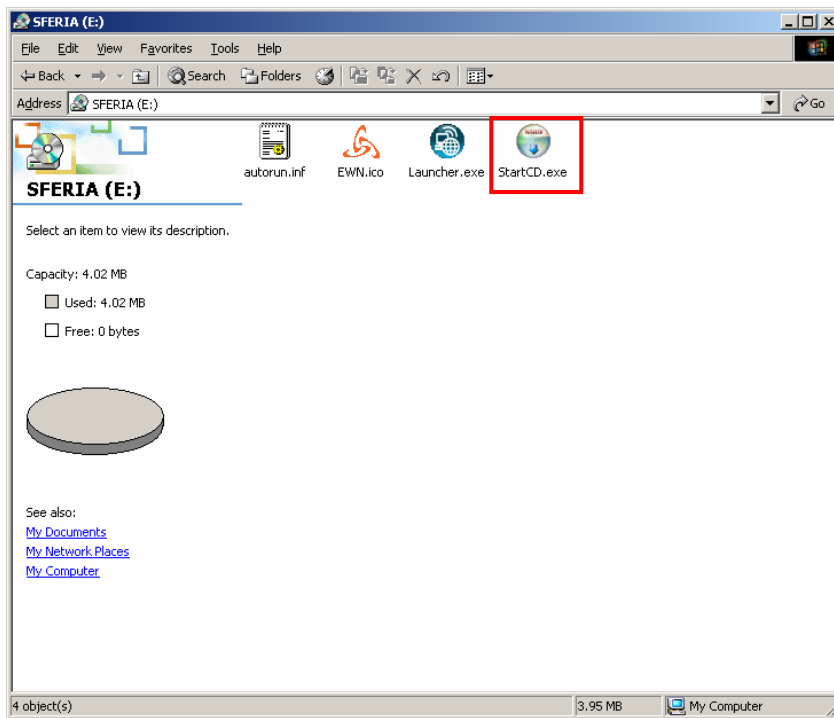
### 3. Click the CD-ROM with the name of "SFERIA"

- 1) Double-click the "ANYDATA(H:)" or Right-click and select "Open"



### 4. Double-click the "StartCD.Exe"





5. Next process for Installation and uninstallation is same as Windows XP from installer language Window (3.4.1 installation 2. 2) after that.

## 3.4 Easy Wireless Net Installation and Uninstall In Windows XP

### 3.4.1 Installing Easy Wireless Net and Driver

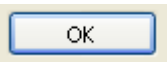
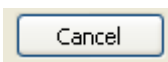
There are two different ways of installation.

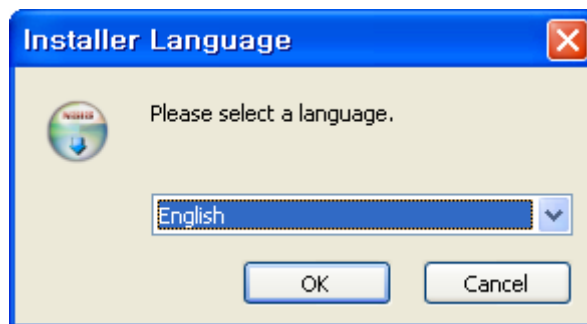
- **Installation 1: Using CD**

, please insert CD to CD-ROM and run the StartCD.EXE without connecting the modem to PC.

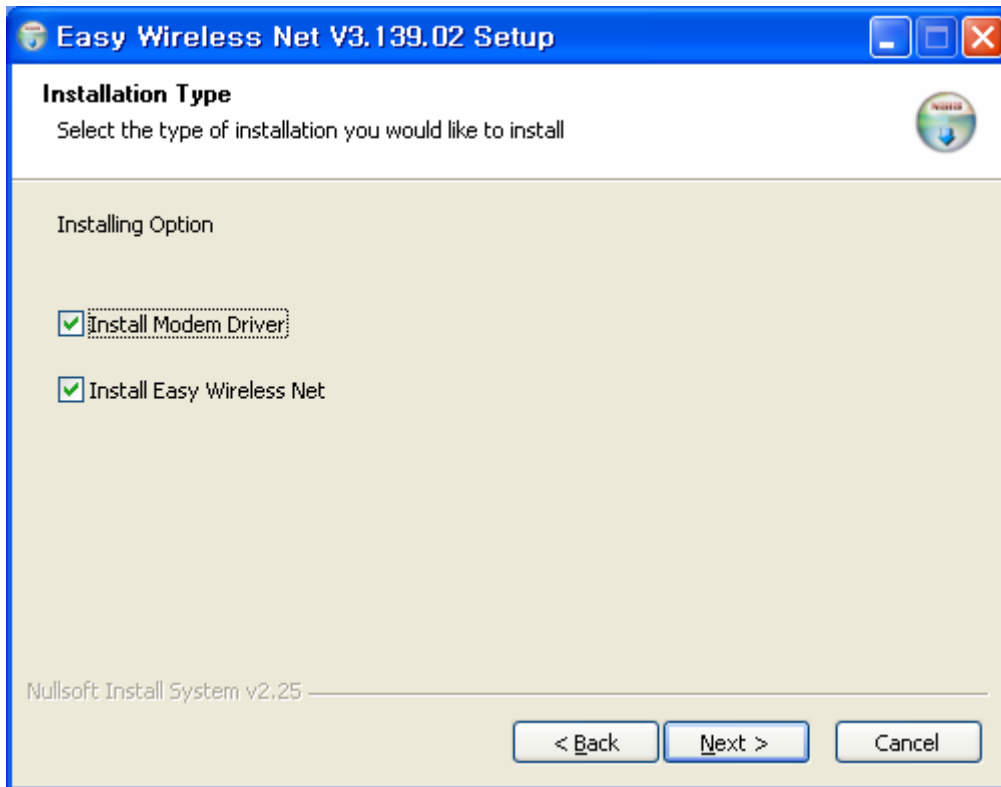
- **Installation 2: Using Plug & Play**


1. Connect the modem to USB Port. If USB Driver isn't installed, Modem Package Installer will run automatically.
2. Select the desire language as shown below.

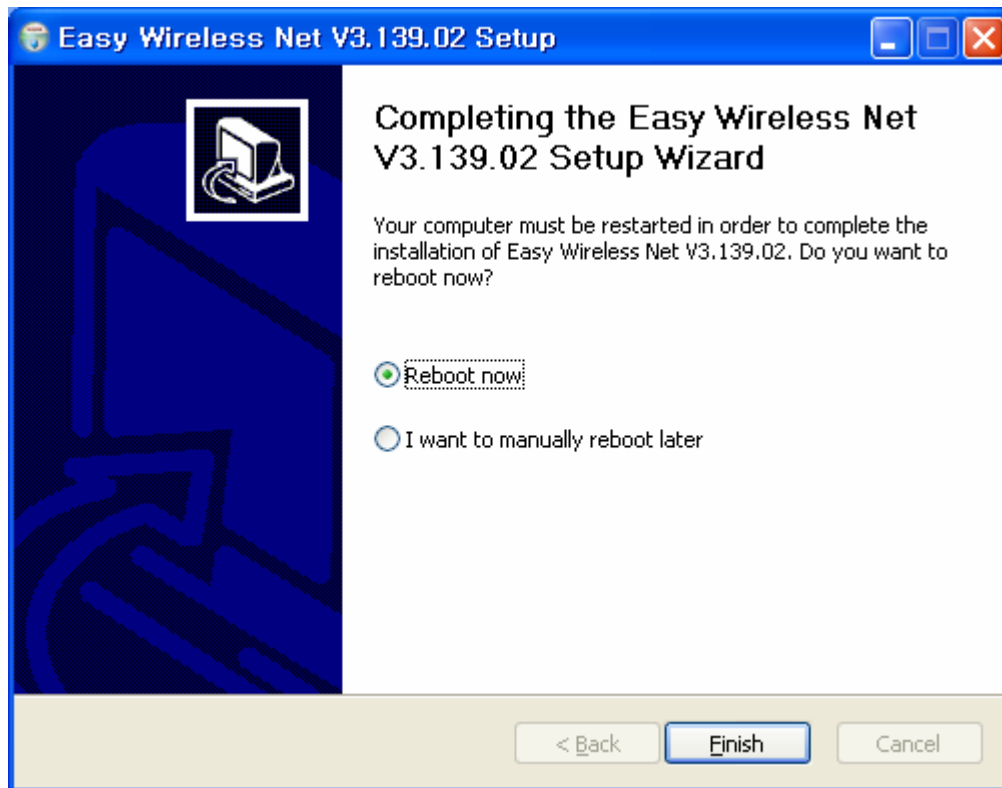
3. Press  button to proceed. By pressing  button, the installation of Easy Wireless Net Program will stop.



4. You can install Easy Wireless NET Program and modem driver by choosing the installing option.



5. Press  button for ending the program installation.



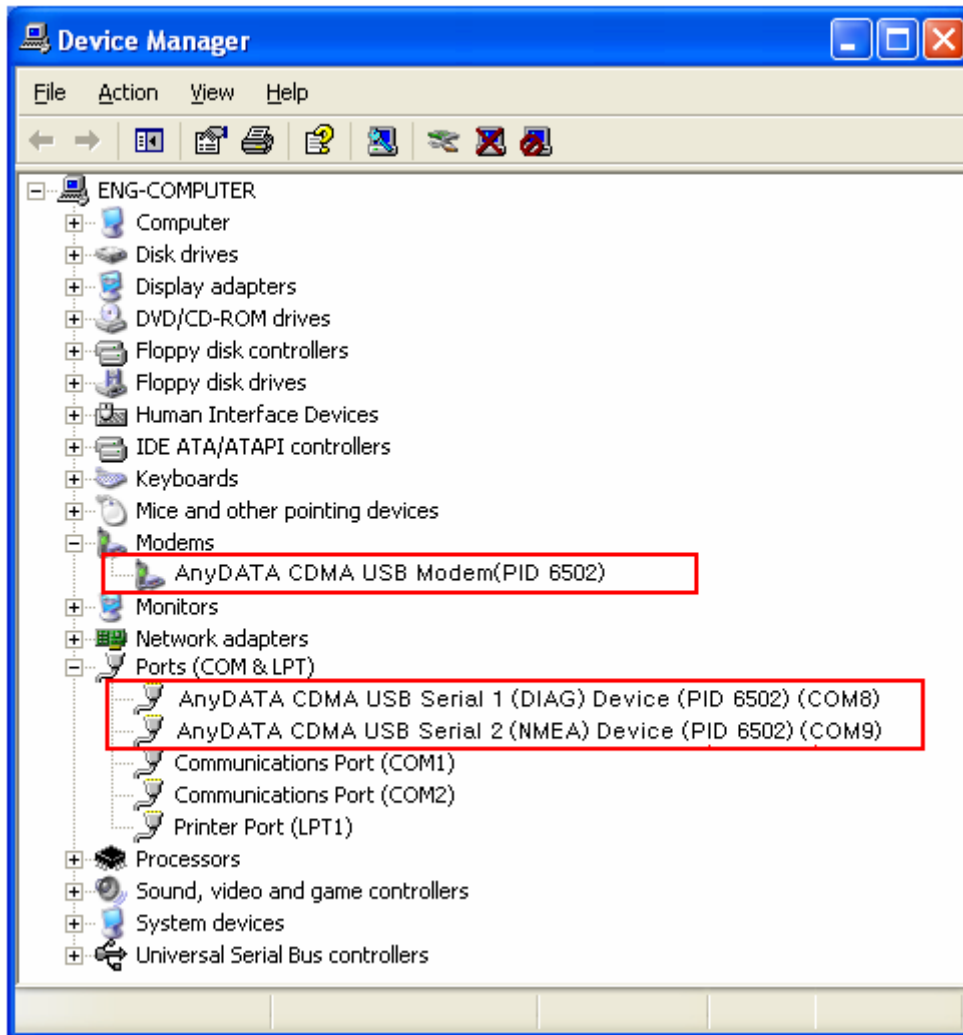
6. The computer needs to restart after the driver installation completed.  
To restart the computer later, select <I want to manually reboot later>.

<Note> Connect the modem and PC's USB port, and check if the driver is installed properly in

<Device Manager>. See the followings to the location of <Device Manager>

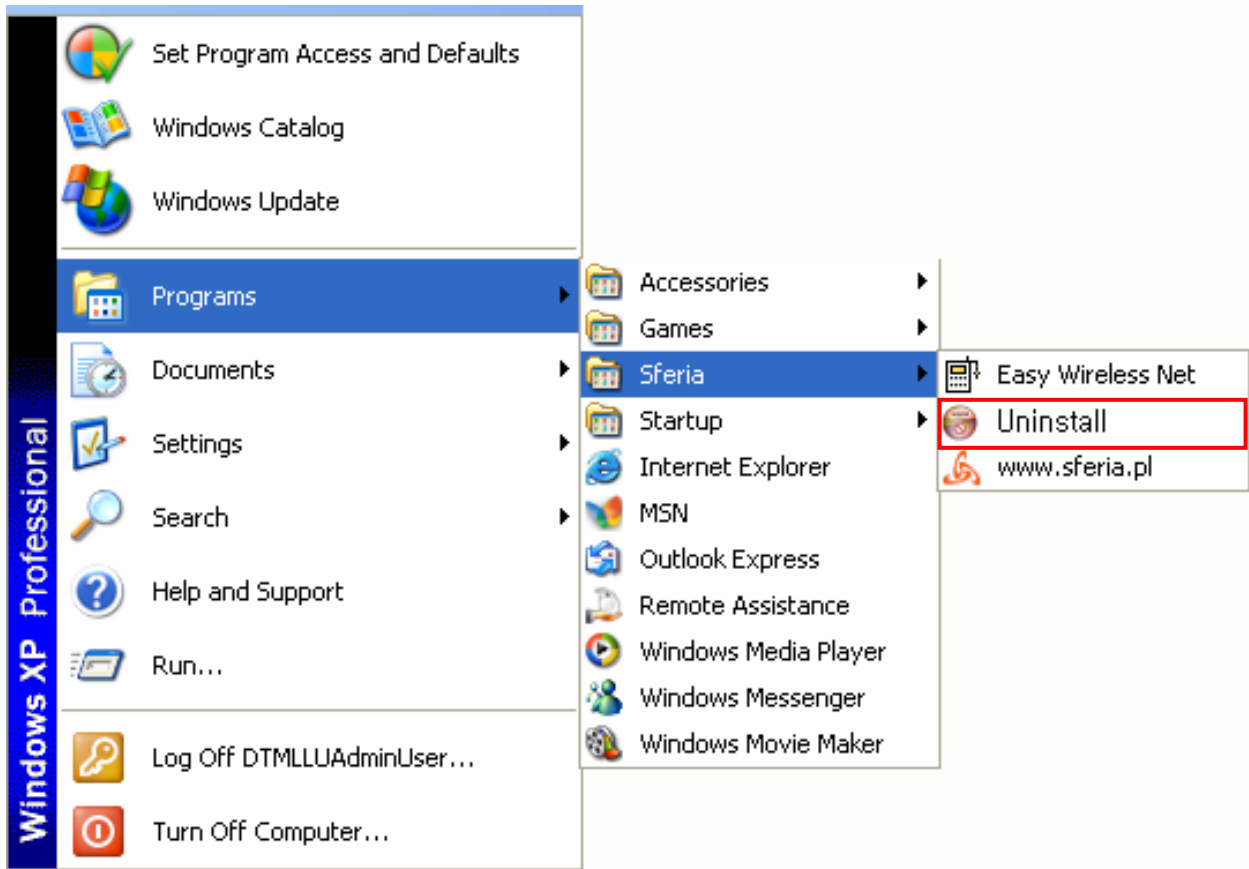
**[Start ► Control Panel ► System ► Hardware Tab ► Device Manager]**

As shown in below with red boxed that shows <AnyDATA CDMA USB Modem> and <AnyDATA CDMA USB Serial 1/2 Device>, the driver has been successfully installed.

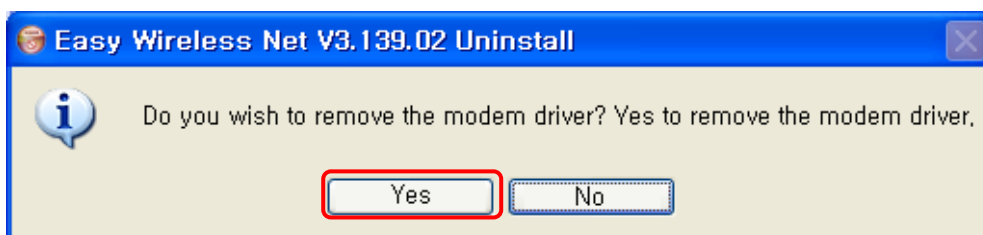


### 3.4.2 Uninstalling Easy Wireless Net and Driver

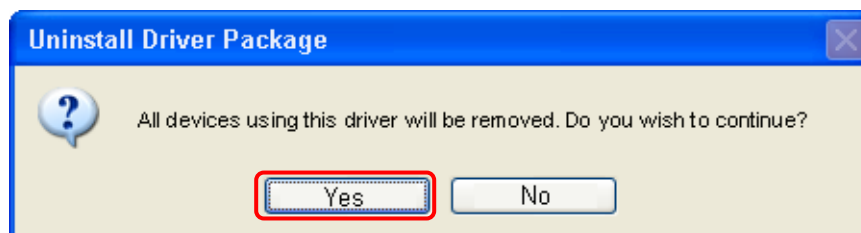
1. [Start ► Programs ► Sferia ► Uninstall]



2. Click <Yes> to remove the modem driver.



3. Click <Yes>. Following screen will appear twice.



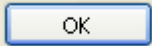
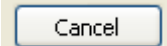
4. The computer must restart after the driver is uninstalled.

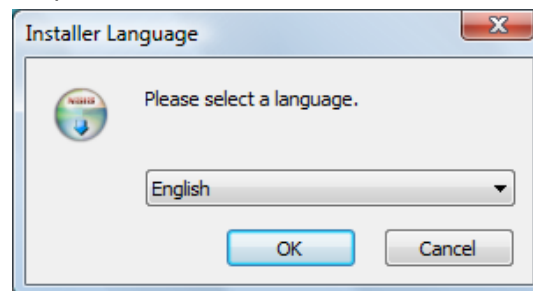


## 3.5 Easy Wireless Net Installation and Uninstall In Windows Vista

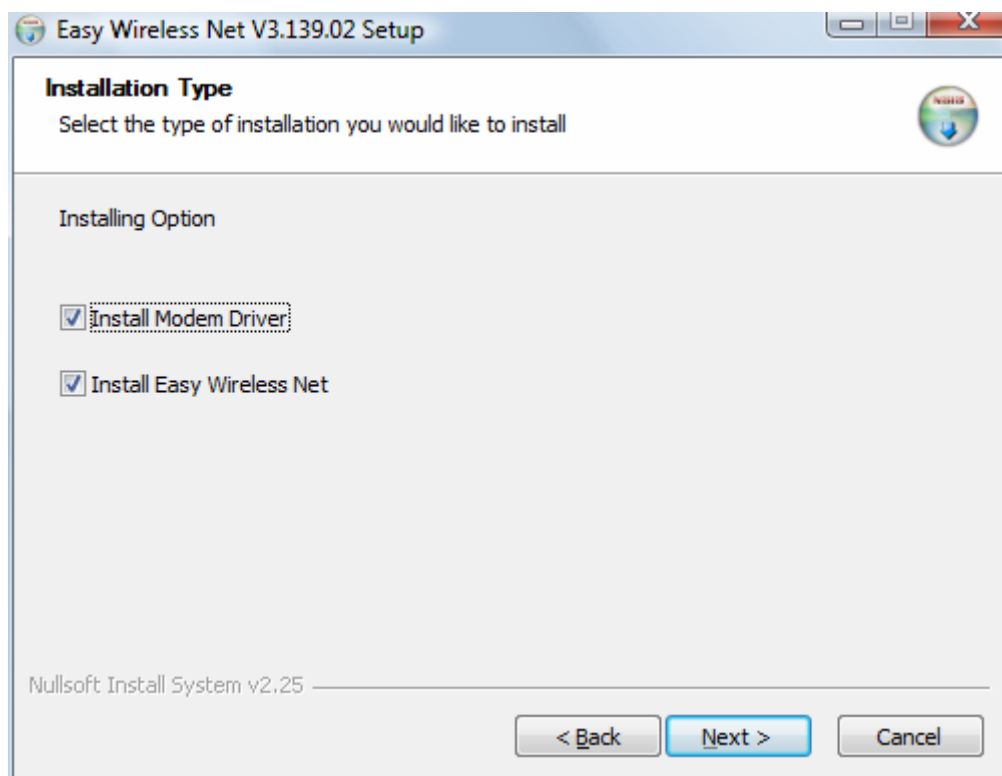
### 3.5.1 Easy Wireless Net Installation


1. Connect the modem to USB Port. If USB Driver isn't installed, Modem Package Installer will run automatically.
2. Select the desire language as shown below.

3. Press  button to proceed. By pressing  button, the installation of Easy Wireless Net Program will stop.

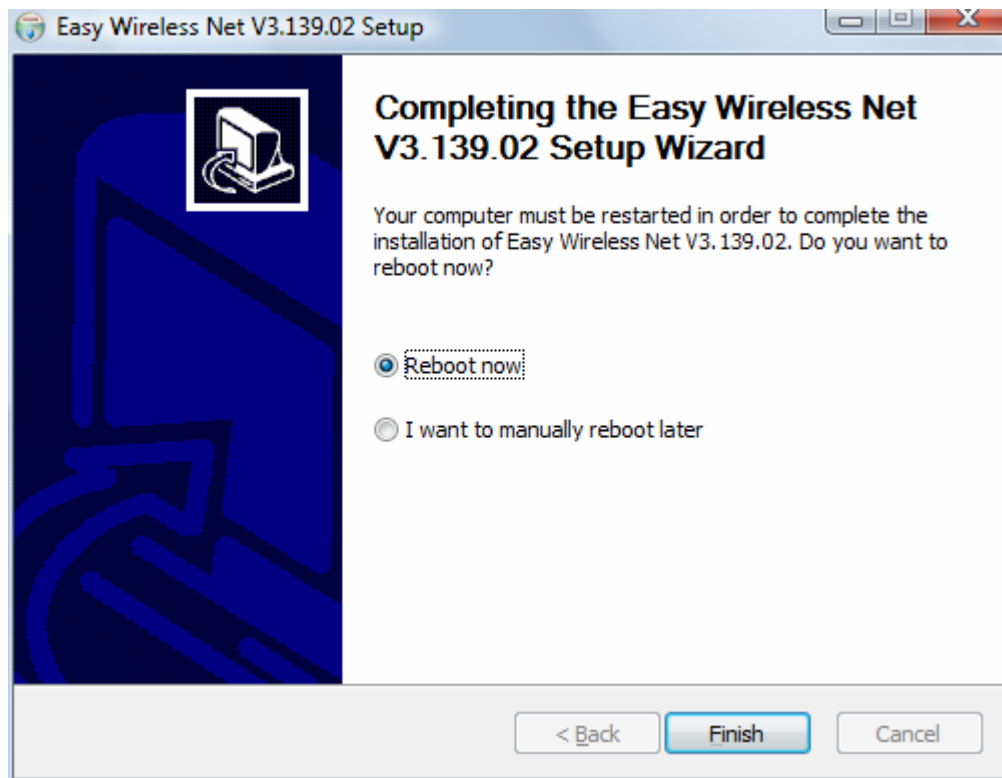


4. You can install Easy Wireless NET Program and modem driver by choosing the installing option.



5. Press  button for ending the program installation.





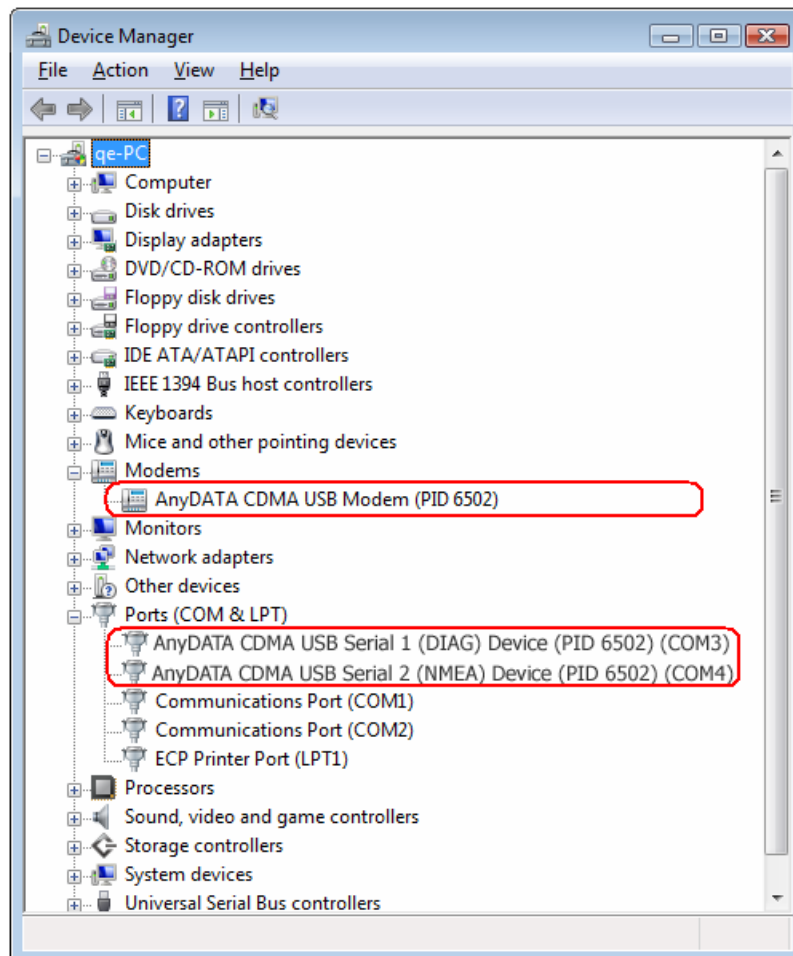
6. The computer needs to restart after the driver installation completed.  
To restart the computer later, select <I want to manually reboot later>.

<Note> Connect the modem and PC's USB port, and check if the driver is installed properly in

<Device Manager>. See the followings to the location of <Device Manager>

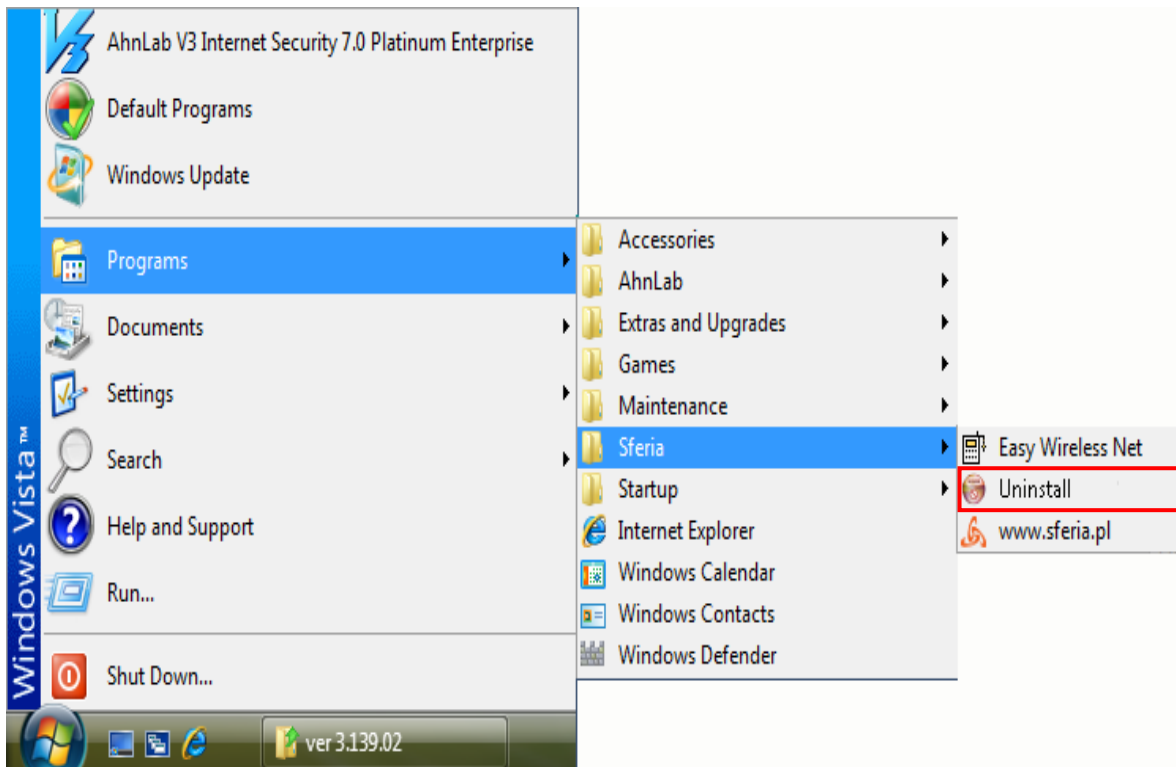
**[Start ► Control Panel ► System and Maintenance ► Device Manager]**

As shown in below with red boxed that shows <AnyDATA CDMA USB Modem> and <AnyDATA CDMA USB Serial 1/2 Device>, the driver has been successfully installed.

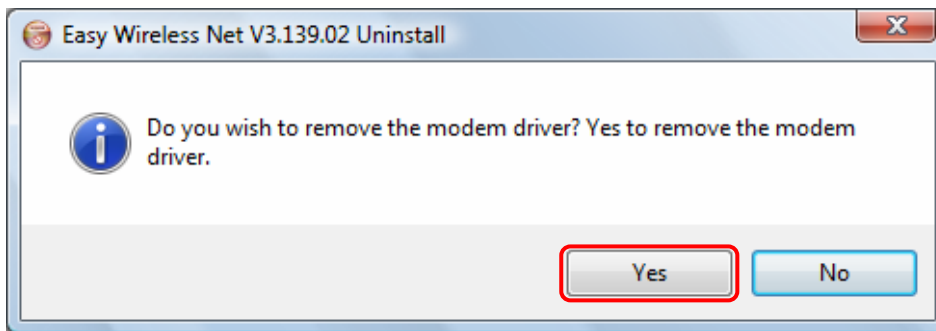


### 3.5.2 Uninstalling Easy Wireless Net and Driver

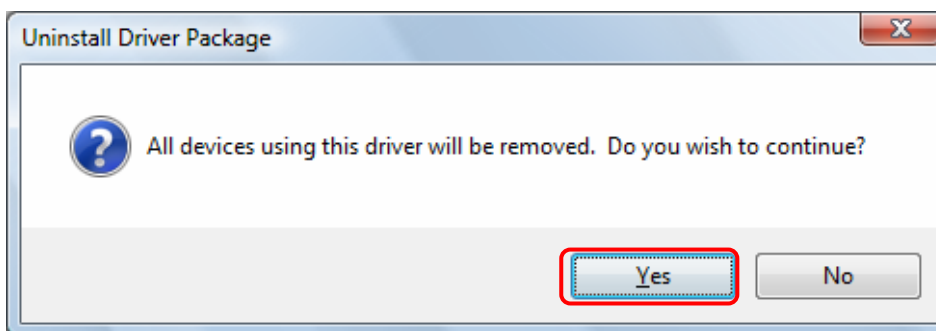
1. [Start ► Programs ► Sferia ► Uninstall]



2. Click <Yes> to remove the modem driver.



3. Click <Yes>. Following screen will appear twice.



4. The computer must restart after the driver is uninstalled.



## 4. Using Easy Wireless Net Program

### 4.1 Running the program

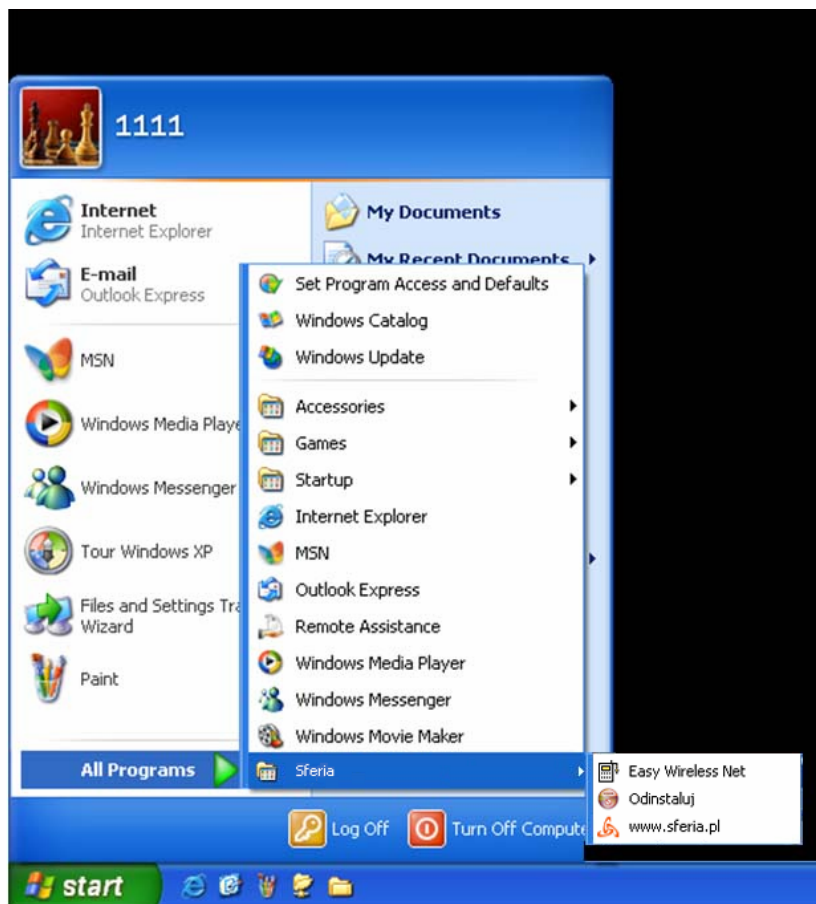
There are 2 (two) ways to run the installed Easy Wireless Net program.



1) Double-click shortcut icon **Easy Wireless Net** on the desktop.

2) Navigate and run Easy Wireless Net program by clicking, start, program and Easy Wireless Net.

[Start ► All Program ► Sferia ►  Easy Wireless Net ]

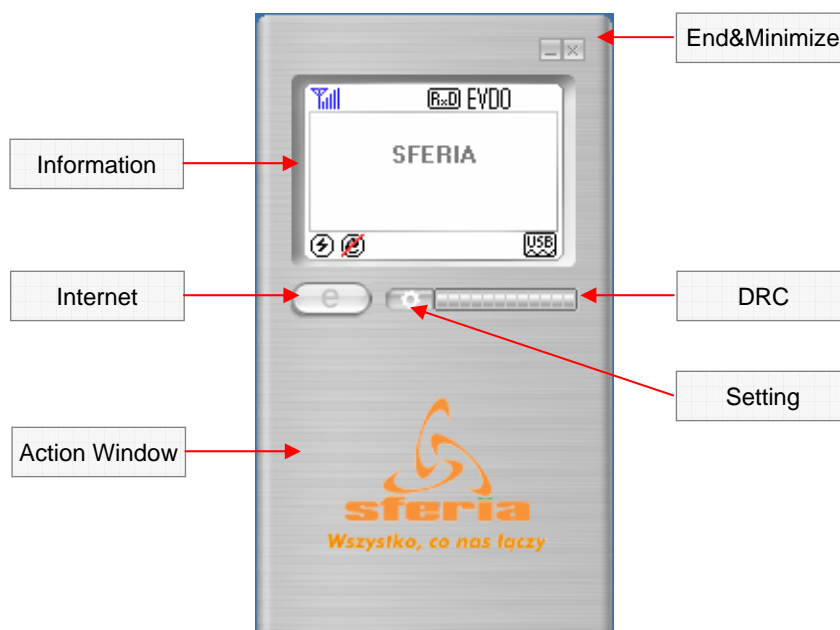


## 4.2 Exiting the program





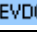

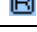







<Note> If DUN is running, the program will end after the completion of these commands.

### 4.3 Screen Display of Easy Wireless Net



### 4.3.2 Description of each icon



Display	Function
	RSSI Signal Strength Indicator
	Rx Diversity Mode.
	Only EVDO mode available
	USB connected
	Roaming
	Connected to the Modem
	Either the cable is disconnected to the modem or improper port connection.
	Internet connected
	Internet disconnected
	connected to the Internet button.
	Disconnecting to the Internet
	Setup Easy Wireless Net




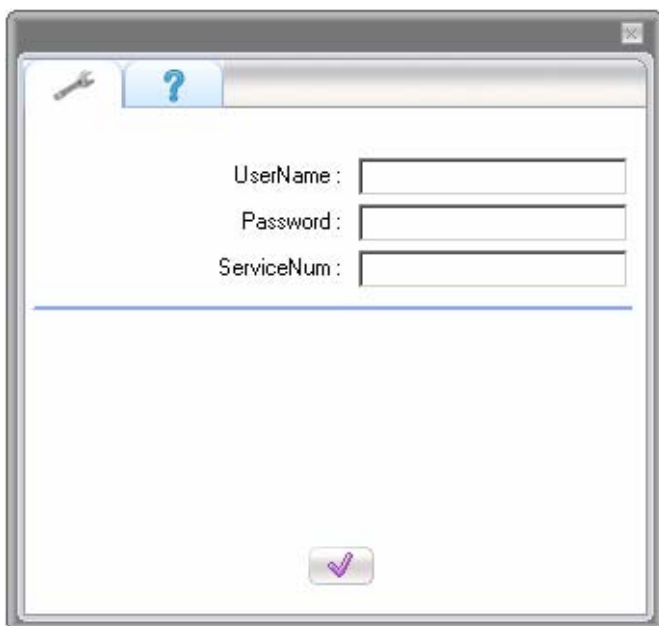
### 4.3.3 Setting Environment

There are two sections for setting environment. One is data from operator for connecting to the Internet, and another is to set the proper port for modem information communications.

#### [Basic] Tab

The basic configuration for connect to the network using EV-DO modem.

All values are set automatically, however if wants to change the value press  button to take effect after writing.

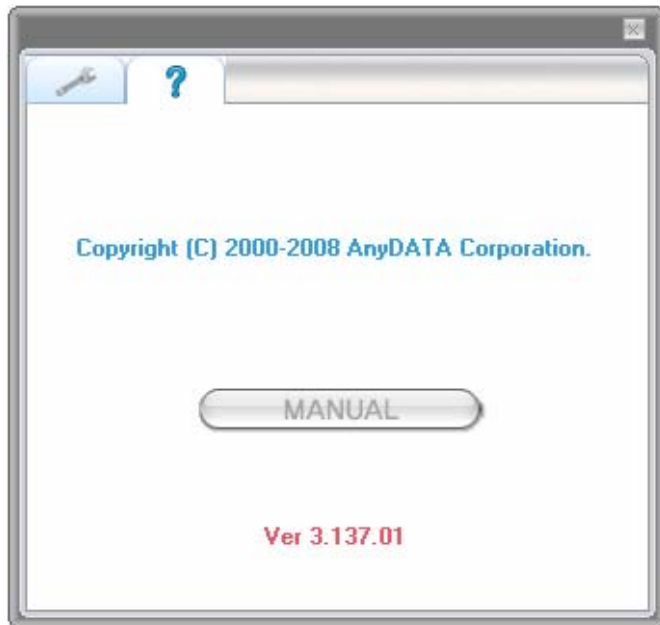
A screenshot of a software window titled "Basic" with a question mark icon. It contains three input fields labeled "UserName:", "Password:", and "ServiceNum:". Below these fields is a large empty rectangular area. At the bottom center of the window is a button with a checkmark icon.

"UserName", "Password", "ServiceNum"  
will be provided by the local carrier.

**[ About] Tab**

Display the software version for EV-DO modem S/W and Easy Wireless Net program.

<Note> When you click on the [MANUAL](#) button, [MANUAL](#) can be seen.





## 4.4 Connecting to the Internet

Must set proper "UserName", "Password" and "ServiceNum" in the above settings.




Then press button, it will automatically connected to the Internet.



If the modem is trying to connect or connected to the Internet, this  icon will appear as shown above. If it cannot connect to the Internet, then  icon will appear.

## 4.5 Disconnecting to the Internet

When user is ready to disconnect from the Internet, press  button to end the connection.

Please check the following if abrupt disconnection of modem occurred:

- 1) Did I intentionally disconnect USB modem?
- 2) Are cables properly connected?
- 3) Did I intentionally change Port number in environment settings?
- 4) Did I quit/exit the program?

## 5. Troubleshooting

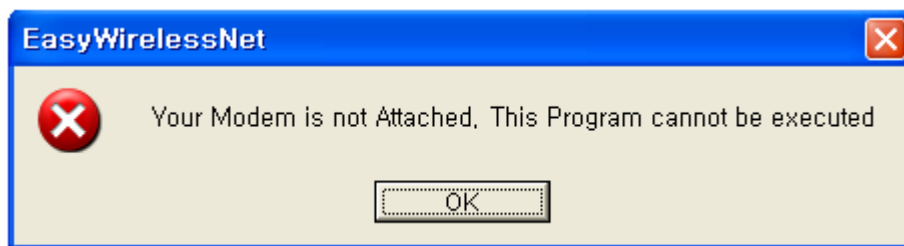
**Q: I cannot connect to the Internet?**

**A:** Please check “environment setting” of program for correct ID, password and Service number. For proper ID, password and Service number, please contact service provider for more information.

**Q: The Internet connection is poor and frequently it gets disconnected.**

**A:** The CDMA frequency is at unstable state. Try to move to a different place then use it again. Also, if you touch or block the USB modem with hand/body contact, the modem connection speed degrades. Please be careful not to touch the modem with your hand or any part of the body.

**Q: After the installation of the program, the program does not run and displays following message**



**A:** This means that USB modem and the compute are not connected properly. Please double check whether USB modem is connected properly to the computer.

**Q: During the running of the program, following message appears and the program halts.**



**A:** The actual connection of USB modem and computer has been disconnected. Please check whether modem is connected to PC properly.

**[RF Exposure Warning]**

- ※ The radiated output power of this device is below the FCC radio frequency exposure limits. Nevertheless, the device should be used in such a manner that the potential for human contact during normal operation is minimized. In order to avoid the possibility of exceeding the FCC radio frequency exposure limit, human proximity to the antenna should not be less than 20cm during normal operation and the gain of the antenna must not exceed 1dBi.

**[Information to user]**

- ※ The user's manual or instruction manual for an intentional or unintentional radiator shall caution the user that changes or modifications not expressly approved by the party responsible for compliance could void the user's authority to operate the equipment. In cases where the manual is provided only in a form other than paper, such as on a computer disk or over the Internet, the information required by this section may be included in the manual in that alternative form, provided the user can reasonably be expected to have the capability to access information in that form.

**Thank you.**