

Apacer M721 Blue Engine Mouse

M721R Wireless receiver

Quick Guide

GENERAL SPECIFICATIONS

- Designed for virtually everywhere use.
- 5 buttons wireless Blue Engine mouse
- Robust 2.4GHz Wireless RF for up to 10 meters distance operation without interferences.
- Remarkable blue engine precision with switchable: 800 / 1600 DPI to benefit smooth tracking experience.
- Slide-in nano receiver storage.
- Low power indicator
- 2 x AAA batteries to operate the mouse

► SYSTEM REQUIREMENT

- One available USB port
- OS compatibility: Microsoft Windows 2000/XP/Vista/7, Apple Mac OS 9 or above

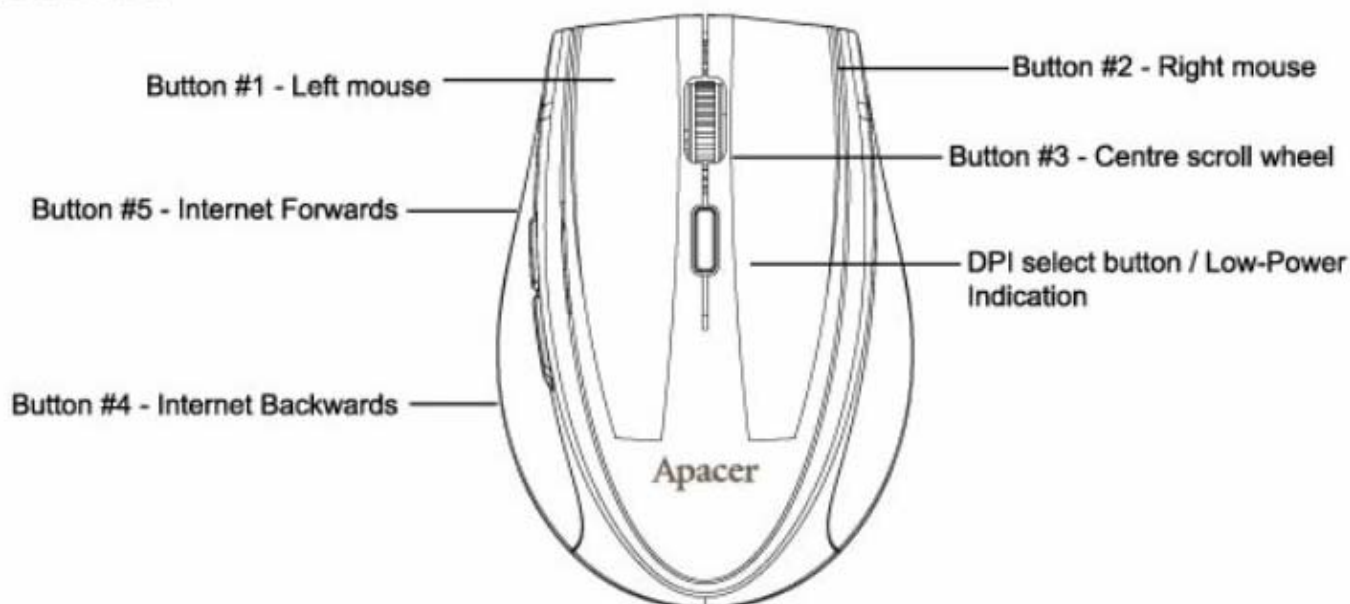
► BEFORE YOU BEGIN

Congratulations for purchasing Apacer's ultra high-resolution M721 2.4GHz Blue Engine mouse which provides you steadiness for virtually using on any surface. This mouse with 800 / 1600 DPI ultra high-resolution is the best you can have for high accuracy in a confined space. The built-in advanced 2.4GHz wireless Blue Engine technology is ready to bring you precise positioning for agile and nimble operations on your system.

► GETTING STARTED

Apacer M721 Blue Engine mouse features an ultra high tracking resolution and an ergonomic shape. Please read this guide thoroughly and follow the instructions to prevent damages or personal injuries.

► FUNCTION



► WHAT'S IN THE BOX

Apacer M721 2.4GHz Blue Engine Mouse package contains the followings:

1. Mouse x 1 + Nano receiver x 1
2. Quick guide x 1
3. AAA battery x 2

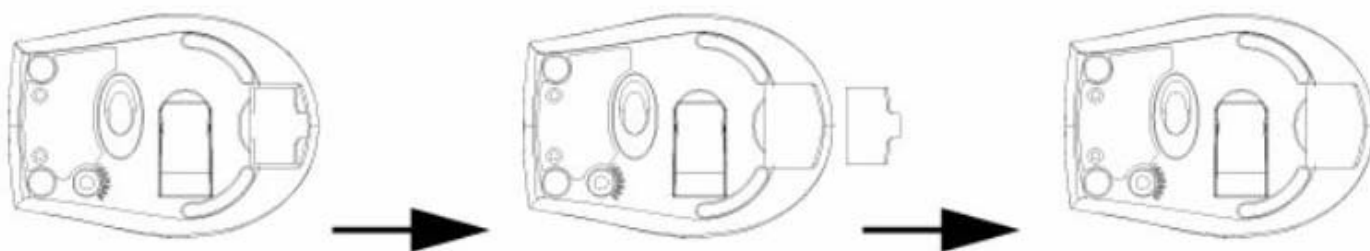
► PRECAUTIONS

- This mouse may not work well on the transparent surface. Please avoid operating this mouse on surfaces like a glass or a mirror, otherwise this mouse may not work properly.
- For a better transmission distance, please avoid using this device on a metal plate. Operating on a metal surface may result in shortened transmission distance.
- If you have a pace-maker or are dependent on other life-saving, sensitive electronic equipments, please be careful when using wireless devices since this device transmits radio signals.
- Please do not look directly into the emitter hole while this mouse is active.
- Risks of explosion and personal injury arise if batteries of incorrect type are replaced. Do not disassemble or expose batteries to conductor, moisture, liquid, fire, or heat (above 54°C or 130°F). Doing so may result in personal injuries. Please handle spent, leaking, or damaged batteries with instructions by the manufacturer and local laws.
- Battery life varies from the usage, the manufacturer, and the manufacturing date.

How to use your Apacer M721 Blue Engine mouse

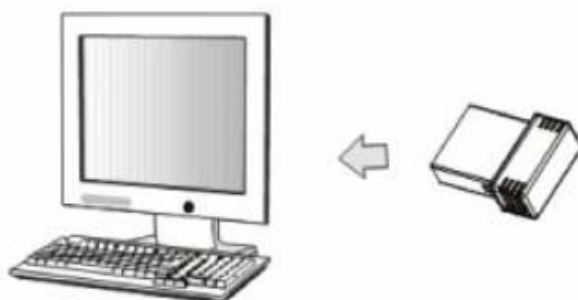
► Step 1 : Inserting the Battery

- 1) Remove the battery compartment cover in the bottom.
- 2) Install batteries with the positive (+) & negative (–) in the correct direction as indicated by the battery compartment label.
- 3) Clip the battery cover back into place and make sure it is firmly closed.



(Caution: Do not look directly in to the optical emitter when power on. Keep away from young children.)

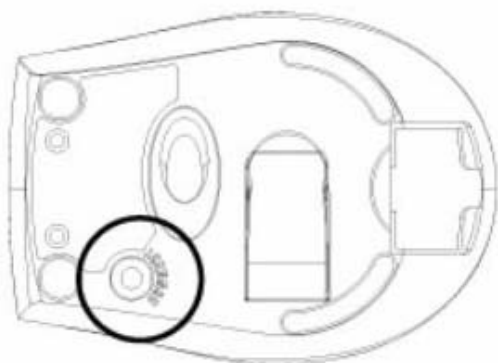
► Step 2 : Place nano receiver M721R into any available USB port of your system and turn it on



(Your system should now detect the mouse and install the required drivers automatically if using Microsoft's Windows series.)

► Step 3 : Synchronize the RF Mouse (paring)

- 1) Hold the mouse upside-down and use a pointed object, such as a pen tip or a clipper, to click the "CONNECT" button twice
- 2) Click any button on the up side, and you should able to enjoy your Apacer M721 Blue Engine mouse now.



(Move the cursor to wake it up if in sleep mode.)

► DPI DESCRIPTION

There is no need to re-do the dpi selecting when turning on & off the mouse. DPI indicator description as following:

Resolution	1,600dpi	800dpi
LED behavior	LED flash 10 times then go off	LED flash 4 times then go off

► BATTERY LOW INDICATION

When the battery becomes lower than 2.0V, battery indicator LED on the top of the mouse will flash. The mouse may continue to operate for a period of time depending on usage, but batteries should be replaced immediately.

► OPERATIONS ON POWER SAVING MODE

In order to conserve operating power, this mouse is designed to reduce power consumption gradually from standby mode to sleep mode if not being used.

Standby modes: The standby mode is entered immediately upon stopping moving mouse. The optical sensor of the mouse will reduce current consumption gradually.

Sleep mode: It enters sleep mode when the RF link between the mouse and the receiver is terminated, the mouse can be waked up by moving or pressing any key on the mouse.

► POWER ON/OFF

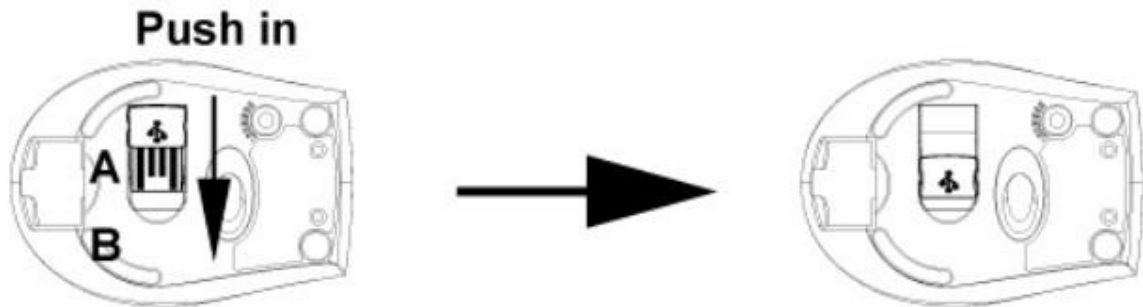
For the consideration of traveling, this mouse designed a store receiver in cavity on the bottom of the mouse, and the power will turn off automatically for saving more battery life.

► RECEIVER STORAGE

For the consideration of traveling, this mouse designed a store receiver in cavity on the bottom of the mouse.

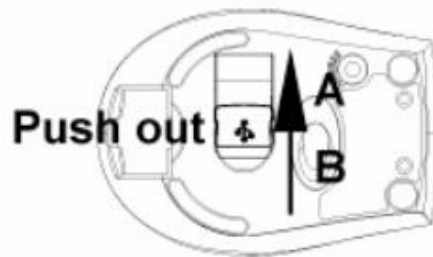
► STORING RECEIVER

To store in the mouse bottom, place USB plug end of receiver (A) then push the receiver into position (B). Receiver will now be locked into the position.



► REMOVING RECEIVER

Push out to the receiver from cavity. The receiver is now active and ready to be inserted into your computer's USB port.



Compatibility

- Microsoft Windows 2000/XP/Vista/7
- Apple Mac OS 9.0 or above

► TROUBLESHOOTING

Common troubleshooting steps

If you feel the mouse does not move smooth as usual, please check the battery indicator on the mouse. Replace batteries if necessary. Remember do not put the battery in the wrong direction.

Un-plug and re-plug the receiver.

Install fresh batteries in the mouse.

Test the device on another USB port or system.

Some surfaces may "trick" the sensor, such as reflective surfaces like glass or mirrors. As a result this product will fail to function normally. The sensor should perform well on all other surfaces.

Federal Communication Commission Interference Statement

This equipment has been tested and found to comply with the limits for a Class B digital device, pursuant to Part 15 of the FCC Rules. These limits are designed to provide reasonable protection against harmful interference in a residential installation. This equipment generates, uses and can radiate radio frequency energy and, if not installed and used in accordance with the instructions, may cause harmful interference to radio communications. However, there is no guarantee that interference will not occur in a particular installation. If this equipment does cause harmful interference to radio or television reception, which can be determined by turning the equipment off and on, the user is encouraged to try to correct the interference by

one of the following measures:

- **Reorient or relocate the receiving antenna.**
- **Increase the separation between the equipment and receiver.**
- **Connect the equipment into an outlet on a circuit different from that to which the receiver is connected.**
- **Consult the dealer or an experienced radio/TV technician for help.**

FCC Caution: Any changes or modifications not expressly approved by the party responsible for compliance could void the user's authority to operate this equipment.

This device complies with Part 15 of the FCC Rules. Operation is subject to the following two conditions: (1) This device may not cause harmful interference, and (2) this device must accept any interference received, including interference that may cause undesired operation.

IMPORTANT NOTE:

Radiation Exposure Statement:

This equipment complies with FCC radiation exposure limits set forth for an uncontrolled environment. This equipment should be installed and operated with minimum distance 20cm between the radiator & your body.

This transmitter must not be co-located or operating in conjunction with any other antenna or transmitter.