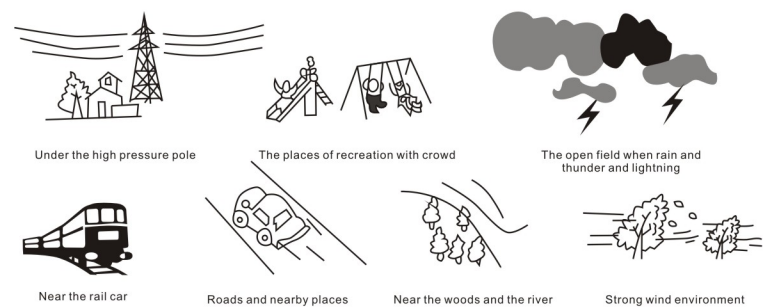


WARNING IMPORTANT

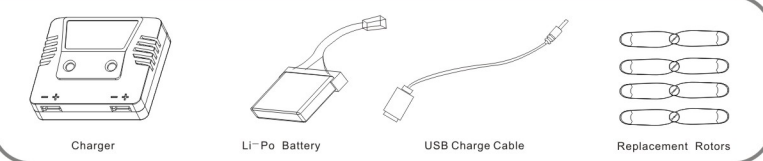
- The product is only suitable for the user over the age of 14. There will be some difficult to pilot this helicopter at the beginning, recommend accompanied by experienced pilot during flying.
- The Product is designed with high-tech of electronic & mechanical parts. For the user who is unfamiliar with the operates must far away from crowds in flight. Improper operation may cause serious body injury and property damage. We will not accept any responsibility for this.
- We will not undertake any responsibility for accident during operating or using this product after sold.
- If you have problems during using, operating, repairing, please contact sale service or distributor for help.

- Cautions:**
- Checking the surroundings before flying.
 - Do not let the plane fly out of sight when flying.
 - Do not let the child play alone, play together with adult.
 - Please make sure, there is no other player use the same frequency at the same area.

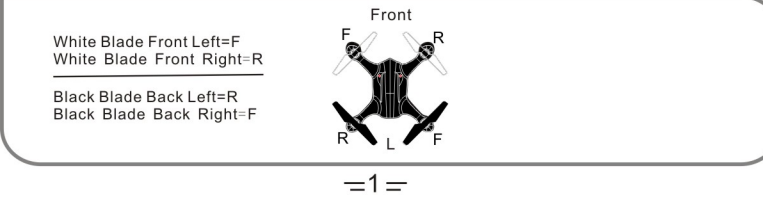
Don't fly your helicopter at the places with these signs



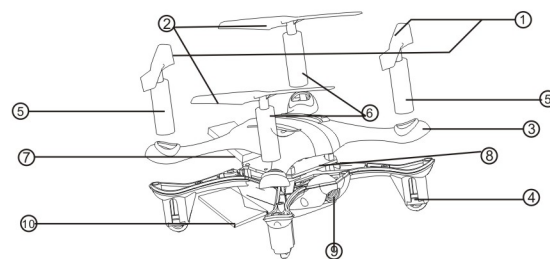
PACKAGE CONTENTS



PACKAGE THE PROPELLER BLADE



NOMENCLATURE OF HELICOPTER

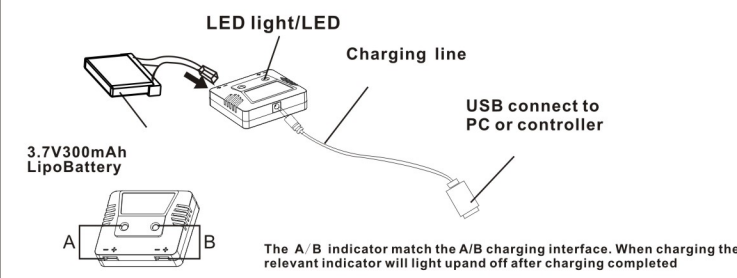


No	Name	Quantity
1	Rotor Blades	2
2	Rotor Blades	2
3	Upper Body	1
4	Bottom Body	1
5	Motor	4
6	Motor	
7	Li-polymer battery	1
8	Receiver board	1
9	Camera	1
10	Camera board	1

CHARGING BATTERIES

Use the charging line of the controller to charge the helicopter

Please use our special charger to charge the battery. Insert the Li-battery plug into the charger. Then insert the plug of USB line into charger, the insert USB plug into Controller or PC (as shown left)



=2=

LED Indicator LED		Charger Specifications		
○	☀	Input	Charging Current	Full Voltage
Idle and Charge Completion	Charging	5V	420-450mA	4.2 ± 0.03V

WARNING The LED will be on continuously while in working. When aircraft indicator is low on power, aircraft LED will also blink. Please landing to be charged

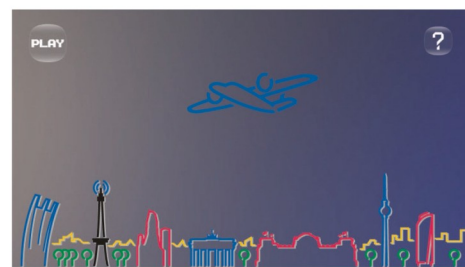
CAUTION

BATTERY AND CHARGER SPECIFICATION

Battery usage and charge duration reference				
Battery type	Battery Specification	Usage Duration	Charge Time	
Li-po battery	3.7V 300mAh	Helicopter flight time	Approx. 6-8Minutes	Approx. 35Minutes (Charging current Approx. 0.5A)

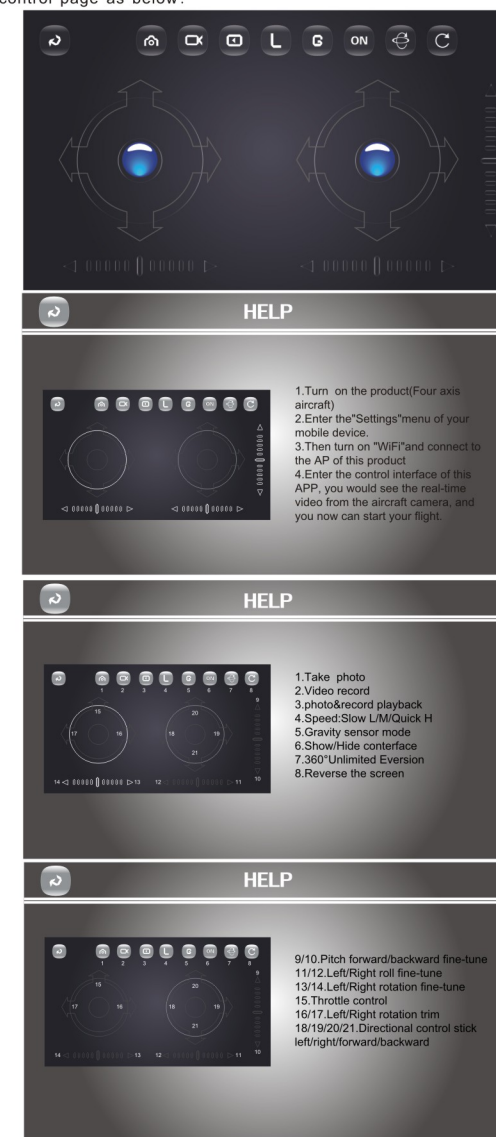
Mobile wifi Control Operating Instructions

- Download the APP according your mobile model as follow
 - For Android APP, we can down load in the two places:
 - Android: http://apk.hiapk.com/appinfo/com.gd_wifiufo
 - Google play: https://play.google.com/store/apps/details?id=com.gd_wifiufo
 - Please search the key world "GD_WIFIUFO" in the APP store, then download it.
- Turn on the airplane
- Turn on your mobile and go to the wifi connection center, searching the wifi which is star with "GD_WIFIUFO", connecting it (The wifi of airplane always star with "GD_WIFIUFO").
- Turn on the APP in your mobile, click the "Play", then you will see the real time transmission. At this moment, we can control the airplane through the mobile screen.



=3=

5. The mobile control page as below:



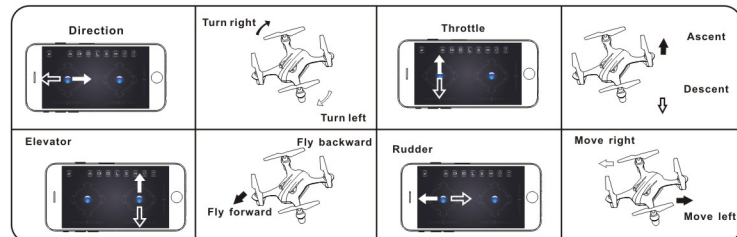
=4=

8. FLIGHT ADJUSTMENT AND SETTING

PLEASE PRACTICE SIMULATION FLIGHT BEFORE ACTUAL FLYING

Before you are familiar with the units, please don't pilot it. Read the instruction carefully, get familiar with all kinds of direction control, and keep repeating until you can play it as you perform your wishes.

- Place the helicopter in a clear open field and the tail of helicopter point to yourself.
- Practice to operate the control sticks (as shown below), and repeat practicing "Throttle high/low", "Left/right", "Forward/backward", and "Crab left/right".
- The simulation flight practice is very important, please keep practicing until the fingers move naturally when you hear operation orders being call out.

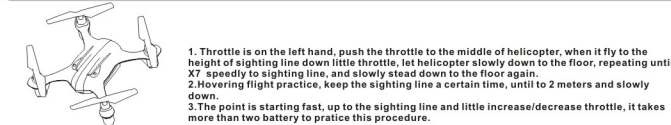


FLIGHT ADJUSTMENT AND NOTICE FOR BEGINNERS

- CAUTION**
- Check if the screws and blades are firmly tightened
 - Check if the transmitter and helicopter are fully charged.

- CAUTION**
- Make sure that no people or obstructions in the vicinity.
 - You must first practice hovering for flying safety, this is a basic flight action (means keep the helicopter in mid air in a fixed position)
 - Please stand approximately 2m diagonally behind the helicopter.

STEP1 THROTTLE CONTROL PRACTICE



STEP2 DIRECTION CONTROL PRACTICE

- Practice forward and back as up and down right hand, keeping a certain height forwarding one meter steadily and turn back. Once again.
- Practice left and right, left and right side to fly on the right direction, the same method as before.

CAUTION If the helicopter fly away, please lower the throttle stick and landing the helicopter. Then move your position to 2m behind the helicopter to continue practicing. If the helicopter flies too far away from you, please land it then move your position to 2m behind the helicopter to continue practicing.

=5=

STEP 3 RUDDER CONTROL PRACTICE

- Slowly raise the throttle stick
- Move the nose of the helicopter right or left and then slowly move the rudder stick in the opposite direction to fly back to its original position

STEP 4 PRECISION PRACTICE
After you are familiar with all actions from step 1 to 3, draw a circle on the ground and practice within the circle to increase your accuracy. You can reduce the size of the circle as you become familiar with the control reflexes.

STEP5 DIRECTION CHANGE AND HOVERING PRACTICE

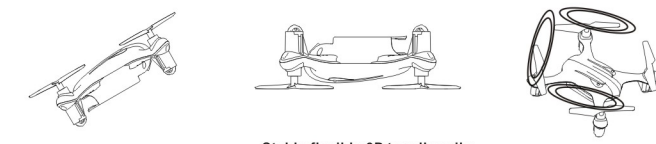
After you are familiar with step 1 to 4, stand at side of the helicopter and continue practicing step 1 to 4. Then repeat the step 1 to 4 by standing in front of the helicopter

ADJUSTMENT OF EACH TRIM

Slowly raise the throttle stick and just as the helicopter lift-off the ground. You can use the trim to correct the action if the helicopter leans in a different direction

- Adjustment of Left/Right trim**
Just before the helicopter lift-off, the nose lean left/right. When leans right, adjust the trim to left side. When leans left, adjust the trim to right side.
- Adjustment of Forwards/Backwards trim**
Just before the helicopter lift-off, the nose lean forward/backward. When leans forward, adjust the trim to down. When leans backward, adjust the trim up.
- Adjust of Crab trim**
Just before the helicopter lift-off, the body crab left/right. When crab right, adjust the trim to left side. When crab left, adjust the trim to right side.

Stable, flexible, 3D to roll easily



After you skilled above basic movements, you can play some of the breathtaking tumbling action. First, the helicopter flew more than 2 meters height; Press the key rollover then, push the stick of forward/backward, or left/right to top then release. the helicopter can roll over.

=6=

Camera /Video function operation

- Touch the camera or video button on the mobile page can control aircraft camera
- Camera mode: Press the camera button, The plane into the camera mode. Aircraft tail lamp flashes one time: finish one picture. If need Continue to take picture: please press the camera button again.
- Video mode: Press the video button, The plane into the video mode. Aircraft tail lamp Slow flashes: start recording image. Press video button again, Sign out video mode. If need continue recording the video, please press video button again.
- Photographic content will be store to the mobile phone directly.

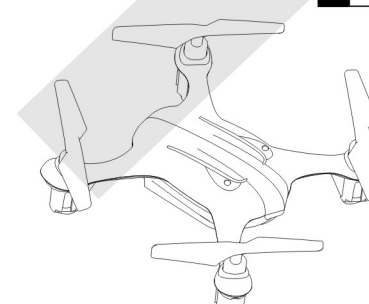
TROUBLE SHOOTING DURING FLIGHT

Situation	Cause	Way to deal
1. After connected the helicopter with battery, the LED indicators keep flashing, no response when operating.	Unable to bind to mobile	Binding the mobile and aircraft (refer to P.7)
2. No response after battery is connected to helicopter	poor contact on battery terminals	1. Turn on transmitter and ensure helicopter battery is inserted properly 2. Use fully charged batteries 3. Re-seat the battery and ensure good contact between battery contacts.
3. Motor does not respond to throttle stick, receiver LED flashes	Helicopter battery depleted	Fully charge the battery, or replace with a fully charged battery
4. Main rotor continue to spin after landing	Throttle stick not on the lowest position	Make sure the Throttle stick is on the lowest position
5. Main rotor spins but unable to take off	1. Deformed main blades 2. Helicopter battery depleted	1. Replace main blades 2. Charge or replace with a fully charged battery
6. Strong vibration of helicopter	Deformed main blades	Replace main blades
7. The helicopter still keep turn after trim rudder trim, or inconsistent speed during left/right pirouette.	1. Damaged rotors 2. Damaged drive motor 3. No correction airplane	1. Replace the main wing 2. Replace the main motor 3. Please follow the correct step on the 7th page
8. The helicopter shift forward/backward	The core of Gyro, not in the center	Trim the elevator trim back to center, re-start the mobile APP
9. Can not fly the helicopter after fall down	1. Motor fall out 2. Rotors loosen	1. Install the motor again 2. Tighten the Rotors

=7=

Turn on your flight dream
This is a high-tech flying toys

- CAUTIONS**
- REPLACING THE PROPELLER BLADE
 - NOMENCLATURE OF HELICOPTER
 - FLIGHT CHARGING
 - BATTERY AND CHARGER SPECIFICATION
 - MOBILE WIFI CONTROL OPERATING INSTRUCTIONS
 - FLIGHT ADJUSTMENT AND SETTING
 - CAMERA /VIDEO FUNCTION OPERATION
 - TROUBLE SHOOTING DURING FLIGHT



- Mobile control quadcopter
- With camera HD Video
- 6 axis gyro

NO.A803W

APEX™
Through in the sky

WARNING Fabrication under 14 years to operate the product. MADE IN CHINA

FCC Statement

This equipment has been tested and found to comply with the limits for a Class B digital device, pursuant to Part 15 of the FCC Rules. These limits are designed to provide reasonable protection against harmful interference in a residential installation. This equipment generates uses and can radiate radio frequency energy and, if not installed and used in accordance with the instructions, may cause harmful interference to radio communications. However, there is no guarantee that interference will not occur in a particular installation. If this equipment does cause harmful interference to radio or television reception, which can be determined by turning the equipment off and on, the user is encouraged to try to correct the interference by one or more of the following measures:

- Reorient or relocate the receiving antenna.
- Increase the separation between the equipment and receiver.
- Connect the equipment into an outlet on a circuit different from that to which the receiver is connected.
- Consult the dealer or an experienced radio/TV technician for help.

This device complies with part 15 of the FCC Rules. Operation is subject to the following two conditions:(1) This device may not cause harmful interference, and (2) this device must accept any interference received, including interference that may cause undesired operation.

Changes or modifications not expressly approved by the party responsible for compliance could void the user's authority to operate the equipment.

The device has been evaluated to meet general RF exposure requirement. The device can be used in portable exposure condition without restriction.