

**Kanex Model No.: K166-1102,K166-1141-SP, K166-1146-GR,K166-1145-FR,  
K166-1144-SW  
Lexking Model No.:BT-7301B  
Bluetooth Keyboard**

**User's Manual**

Congratulations and thanks you choosing the Kanex Multi-Sync Bluetooth Keyboard as your means of communication among Apple iOS Smartphone, iPad series, and most of Android OS devices or Mac OSX, Window OS device. K166-1102 embedded 1,200mAh rechargeable lithium ion battery offering you can repeat charge battery for keyboard input, this keyboard is designed by Kanex. Before you starting use this device, please detail READ this user's manual.

**Contents:**

- 1.Package and Encloses
- 2.OS compatible
- 3.Prodcut function description
- 4.Operating
- 5.Troubleshooting
6. Product Guarantee
- 7.Radio frequency Warning

**Package and Encloses**

1. Keyboard Unit\*1
2. Cable\*1
3. User's manual\*1

**OS Compatible:**

The Keyboard is main support Mac OS and iOS device as following;

- 1.iOS : iPhone Series, iPad Mini, iPad Series of iOS 5/6/7/8/9/10.x
- 2.Mac OS X : Mac OS 10.6 above

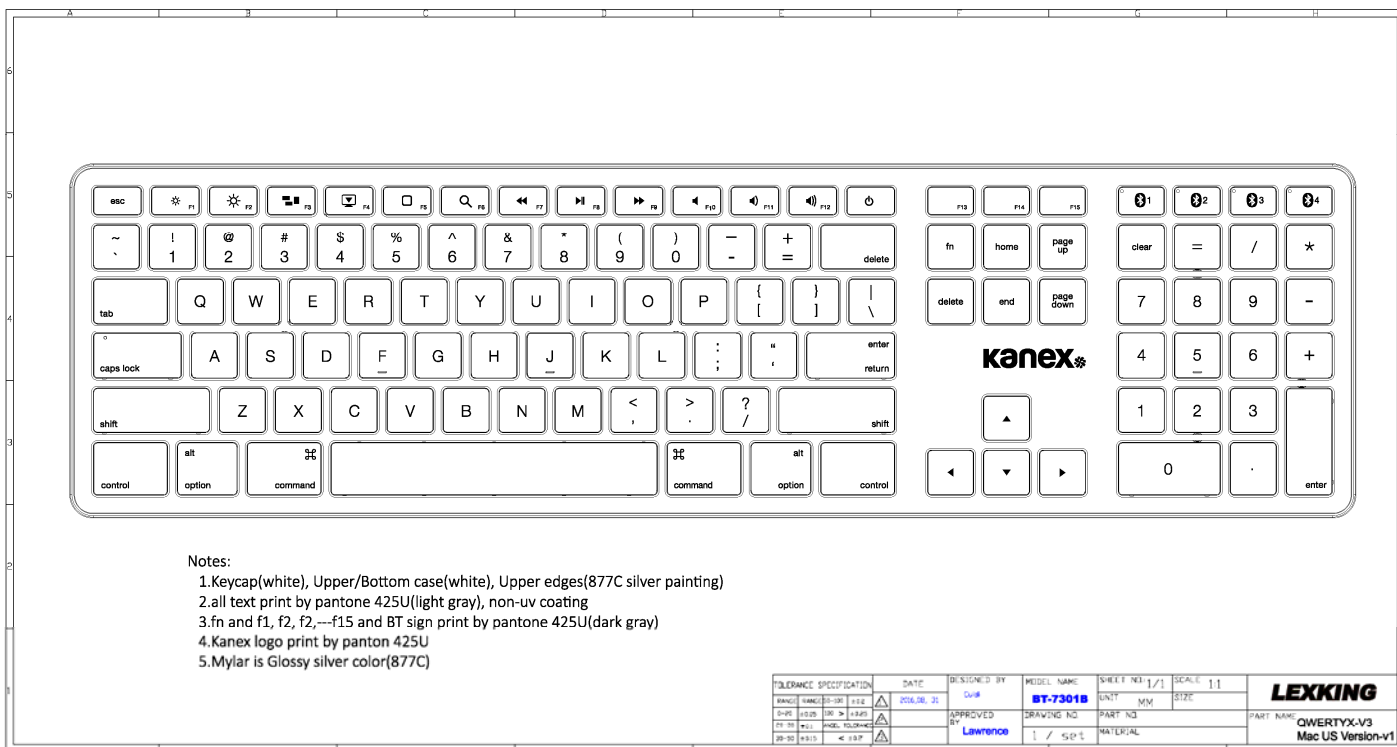
It also can support most different OS device as following, except first column keys.

- 1..Android : Compatible Android 4.0/5.0/6.x devices with HID Bluetooth
- 2.Window OS : XP/2000/7/8/10

(Easily to link Notebook and external dongle embedded with Personal Computer)

# K166-1102(BT-7301B) Product profile and function descriptions

(Mac Version )



Model No. : K166-1102 **kanex**  
Serial No. :  
This device complies with Part 15 of the FCC Rules.  
Operation is subject to the following two conditions:  
This device may not cause harmful interference and  
This device must accept any interference received,  
including interference that may cause undesired  
operation.  
Designed in California  
Made in China  
FCC ID : PYWKK1661102

Model No. : BT-7301B **LEXKING**  
Serial No. :  
This device complies with Part 15 of the FCC Rules.  
Operation is subject to the following two conditions:  
This device may not cause harmful interference and  
This device must accept any interference received,  
including interference that may cause undesired  
operation.  
Designed in California  
Made in China  
FCC ID : PYWKK1661102

## Hotkey functions;

### 1.4-Bluetooth mode setting keys;

BT1, BT2, BT3, BT4 4 keys located at upper-right area which they are for setting connect with 4 devices each.

Also they have a white color LED against each keys.

- a. Short press the BT mode key that the key will be setting to in this against mode to connect devices. Then the LED will be blink a time.
- b. When long press the BT mode keys with 3 seconds, its mode function will become pairing mode for waiting connect device, once it finished to connect the devices, the LED will blink 15 seconds then off.

### 2.Others normal keys;

You can follow first column keys function to operate its function of K166-1102(BT-7301B) well under Mac OS or iOS.

### LED signal description (from right to left)

LED1, LED2, LED3, LED4→all white color

When you short term press the BT mode keys that the key will be setting to in this against mode to connect devices. Then the LED will be lighting on 15 seconds.

When you long term press the BT mode keys with 3 seconds, its function will become into pairing mode for waiting connect device, once it finished to connect the devices, the LED will keep to blink 15 seconds then light off.

You can swap the BT1 to BT4 key with each devices as you connect mode.

LED1 also embedded a red color led for indication power charge process.

### Battery low status:

During the typing time, each BT mode key LED have continually blink, it represent embedded battery have low power situation, you have to recharge the battery power immediately.

### Power Charge Indication

When the battery power is lower status, the against mode key will be blink once typing any key till the power all shut down then light off. You have to recharge the battery by the enclose cable for connect between keyboard micro usb port and another side USB A type connector of 5VDC power. Then you will see the Red color led light on indication in BT1 mode key. It will be light off till power full charged.

### Calslock

Inside the capslock key, it have a white color LED for indication upper-case letters status when it be light on status.

### One/Off Powe Switch

On/Off slider switch which locate in back side of Keyboard unit, when the slider switch have turn on, the power will be lighted on. When you turn off the slider switch, the power will be lighted off.

(\*\* suggest you turn off the battery power for saving batter power consumption, if you don't use keyboard for long

time)

### **How to Operating:**

Before you starting use this keyboard, please detail READ below operating information;

(Notice:Please full recharge battery in keyboard via enclose USB cable before you first time use K116-1102(BT-7301B) keyboard unit.

### **Connect to Bluetooth host devices;**

- 1.Take out K116-1102(BT-7301B) keyboard unit from package box
- 2.Open PE bag of keyboard then load the AAA alkaline battery.
- 3.Slider On/Off switch button to “on” status, it is mean power on status for waiting pairing with Apple iDevice or some other OS device with Bluetooth function.
- 4.Open your iDevice Bluetooth searching mode.
- 5.Then short press K116-1102(BT-7301B) keyboard BT1 or any BT mode keys as you wanted(e.g. BT2, BT3, BT4), the LED will have lightning means the keyboard have ready for this against mode for next pairing process.

You continuously to long press this BT mode keys, the keyboard unit will become in pairing model, the LED will blink for waiting connect. you will find “Kanex MultiSync Bluetooth Keyboard” string onto your iDevice screen shown in. you can select the string name icon then press “Enter” key, your iDevice will automatically connect with this keyboard as well.

If you want to connect another iDevice with K116-1102(BT-7301B) keyboard unit, you can following above item 5 to do repairing again.

**(you can press “fn”+”C” key for keep factory reset status for clean K116-1102(BT-7301B) keyboard each BT mode connect setting)**

### **Basic Troubleshooting**

#### **Q1 : You can't pairing this keyboard**

- 1.As power saving design concern, if you didn't touch each BT mode key over pass 10 mins after you doing the pairing process, please turn off the power switch then re-open again then you can follow pairing process again.
- 2.if the keyboard have any battery power issue, may you can try to turn off power switch then turn on it again, then you can re-pairing keyboard again between your iDevice and BT Keyboard unit.
- 3.Please make sure does battery power is fully enough for keyboard working, may you can check under each BT mode key, if the LED glitter status during you typing process, If so, please recharge battery immediately.

#### **Q2 : Keyboard have connect with iDevice successfully but it is still not working:**

- 1.Please make sure, does battery power is fully enough for working with keyboard, you can check under each BT mode key, if the LED glitter status during the typing process, If so, please recharge new battery immediately.

2. Make sure the BT Keyboard is working on metal surface, if so, please move out keyboard unit from the metal surface for operation in avoiding the metal surface conflict the BT keyboard wireless signal.

3. If the keyboard is still can't be connect with device during pairing process, may you can press "fn"+"C" key for keep factory reset status for clean K116-1102(BT-7301B) keyboard each BT memory mode then re-connect setting again.

If you still can't smoothly troubleshooting the problem, please reach customer service people or customer service as a contact email or return the new keyboard to your purchased shop by keep original package.

Product Guarantee:

1 year guarantee during normal used.

Abnormal use are not including guarantee.

**Warning:****Federal Communications Commission (FCC) Statement****Notice :**

The user shall be cautioned that changes / modifications not approved by the responsible party could void the user's authority to operate the equipment.

The changes or modifications not expressly approved by the party responsible for compliance could void the user's authority to operate the equipment.

This device complies with Part 15 of the FCC Rules. Operation is subject to the following two conditions:

- (1) this device may not cause harmful interference, and
- (2) this device must accept any interference received, including interference that may cause undesired operation.

**IMPORTANT NOTE:**

To comply with the FCC RF exposure compliance requirements, no change to the antenna or the device is permitted. Any change to the antenna or the device could result in the device exceeding the RF exposure requirements and void user's authority to operate the device.

**FCC INFORMATION**

The Federal Communication Commission Radio Frequency Interference Statement includes the following paragraph:

The equipment has been tested and found to comply with the limits for a Class B Digital Device, pursuant to part 15 of the FCC Rules. These limits are designed to provide reasonable protection against harmful interference in a residential installation. This equipment generates, uses and can radiate radio frequency energy and, if not installed and used in accordance with the instruction, may cause harmful interference to radio communication. However, there is no grantee that interference will not occur in a particular installation. If this equipment does cause harmful interference to radio or television reception, which can be determined by turning the equipment off and on , the user is encouraged to try to correct the interference by one or more of the following measures:

- Reorient or relocate the receiving antenna.
- Increase the separation between the equipment and receiver.
- Connect the equipment into an outlet on a circuit different from that to which the receiver is connected.
- Consult the dealer or an experienced radio/TV technician for help.

The user should not modify or change this equipment without written approval from Apogee Inc. Modification could void authority to use this equipment.