

Kanex

Bluetooth Keyboard

User's Manual

Congratulations and thanks you choosing the Kanex Bluetooth Keyboard as your means of communication among Apple iOS Smartphone, iPad, most of Android OS 4.0+, 5.x device or Mac OSX, Window OS device. This keyboard is designed by Kanex. Before you starting use this device, please detail READ this user's manual.

Contents:

- 1.Package and Encloses
- 2.OS compatible
- 3.Prodcut function description
- 4.Operating
- 5.Troubleshooting
6. Product Guarantee
- 7.Radio frequency Warning

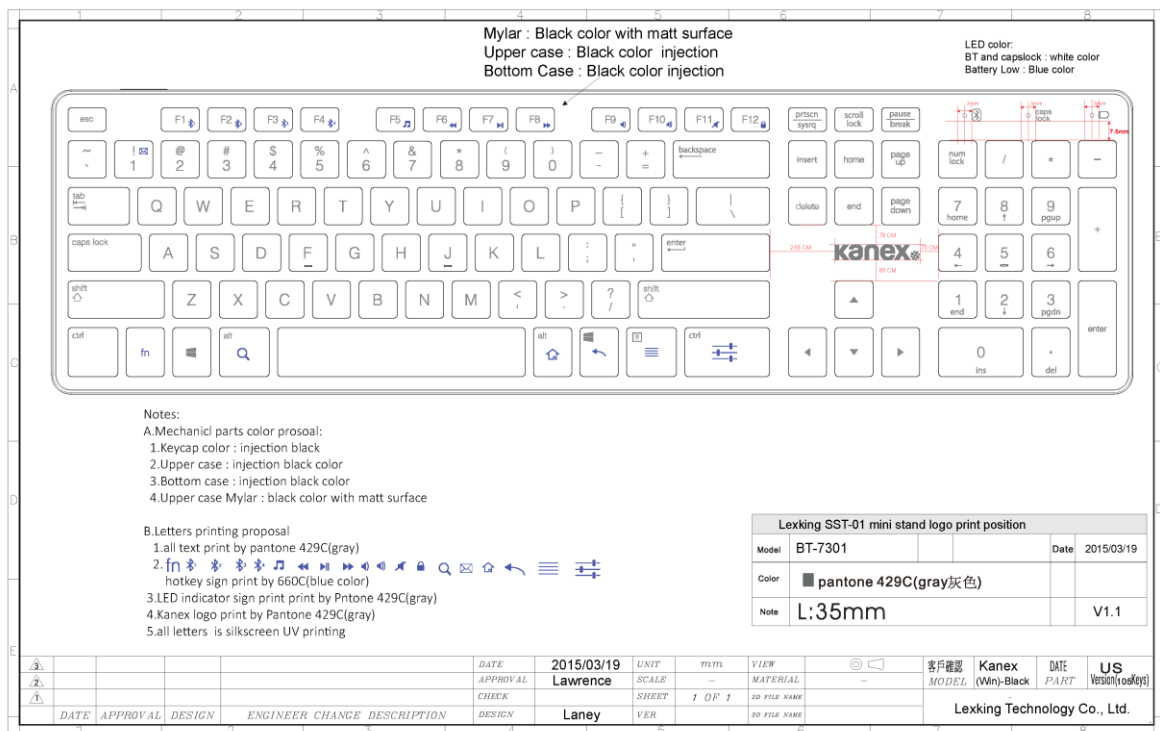
Package and Encloses

1. Keyboard Unit*1
- 2.AAA Alkaline battery*2
- 3.User's manual*1

OS Compatible:

- 1.iOS : iPhone Series, iPad Mini, iPad Series of iOS 5/6/7/8.x
- 2.Android : Compatible Android 3.0/4.0/5.x device with HID Bluetooth
- 3.Mac OS X : Mac OS 10.6 above
- 4.Window OS : XP / 2000 / 7 / 8 / 10
(Easily to link Notebook and external dongle embedded with Personal Computer)

Window Version



Hotkey functions;

1.4-Bluetooth mode keys

Mac→BT1, BT2, BT3, BT4 for setting connect with 4 devices.

Win version →Fn+F1→BT1, Fn+F2→BT2, Fn+F3→BT3, Fn+F4→BT4 for setting connect with 4 devices.

2.Others normal keys;

You can follow both version of BT-7301 the printing icons onto keycap shown then use it normally.

LED signal description (from right to left)

1.LED1→White color

LED1 will keep blink during each pairing mode process, once BT-7301 connect with device already, LED1 will light on 15 seconds then light off the LED.

it also will have blink a time when you swap the BT1 to BT4 each device connect mode.

2.LED2→White color

LED2 will light on when Capslock key be pressed for represent the typing at upper case letters status. This LED will be lighting off after 2 minutes of uppercase LED lighting.

3.LED3→Blue color.

LED3 will have blink till power off when battery voltage lower under 2.2VDC, you have to replace a new AAA battery kits immediately.

One/Off power switch

On/Off slider switch which locate back side of Keyboard, when the slider switch have turn on, the power will be lighted on. When you turn off the slider switch, the power will be lighted off.

ID button switch (locate at keyboard back side)

Before you wanted pairing to connect with devices, please choose BT1, BT2, BT3, BT4 anyone mode you wanted connect, then press the ID button, keyboard function will become in pairing process.

How to Operating:

Before you starting use this keyboard, please detail READ below operating information;

Notice:

Please use the new AAA alkaline battery keep full power before you first time use BT-7301

Connect to Bluetooth host devices;

1. Take out BT-7301 unit from package box
2. Open PE bag of keyboard
3. Slider On/Off button to "on" status at keyboard backside, it is mean power on status for waiting pairing with iDevice(e.g. Apple device, Android Device or Notebook, PC with Window OS embedded Bluetooth dongle inside)
4. Open your iDevice Bluetooth searching mode.
5. Presse Bluetooth modes key(any mode key of BT1, BT2, BT3, BT4), then press the keyboard pairing button key(locate on keyboard back side). You will find "Kanex BT keyboard" string onto your iDevice screen shown.

Select the the icon then press "Enter" key, your iDevice will automatically connect with Kanex BT keyboard well.

6. When you will not use keyboard for long time, suggest you shoud turn off power switch for saving battery power. If you want to use it again, you just turn on power on switch then Kanex BT keyboard will still connect with iDevice again, it is no need to pairing again.

If you want to connect another iDevice in BT-7301, you can choose another BT mode key then press the key then follow above the process for connect device again.

Troubleshooting

Q1 : You can't pairing Kanex BT Keyboard

1. As power saving design concern, if you didn't touch ID button key over pass 30 minutes during pairing process, please re-open power switch again then you just follow press ID button for pairing again.
2. If the keyboard have any power transfer issue, you can try to turn off power switch then turn on it again, then you can re-pairing keyboard again between iDevice and Kanex BT Keyboard.
3. Please make sure does battery power is fully enough for working, may you can check LED2 if glitter status, If so, please recharge battery power immediately.

Q2 : Hama KEY2GO X1000 connect with iDevice successfully but it is still not working:

1. Please make sure does batter power is fully enough for working, you can check LED3 status, if it blink during

typing which is represent low power status, please replace a new one alkaline battery.

2. Make sure does Kanex BT Keyboard work on metal surface, if so, please move out the metal surface for operated in avoiding the metal surface conflict the RF signal.

3. If you still can smoothly troubleshooting the problem, please reach Kanex customer service people as contact mail or return the new keyboard to you purchased shop by keep original package.

Product Guarantee:

1 year guarantee during normal used.

Abnormal use are not including guarantee.

Warning:

Federal Communications Commission (FCC) Statement

This Equipment has been tested and found to comply with the limits for a Class B digital device, pursuant to Part 15 of the FCC rules. These limits are designed to provide reasonable protection against harmful interference in a residential installation. This equipment generates, uses and can radiate radio frequency energy and, if not installed and used in accordance with the instructions, may cause harmful interference to radio communications. However, there is no guarantee that interference will not occur in a particular installation. If this equipment does cause harmful interference to radio or television reception, which can be determined by turning the equipment off and on, the user is encouraged to try to correct the interference by one or more of the following measures:

- Reorient or relocate the receiving antenna.
- Increase the separation between the equipment and receiver.
- Connect the equipment into an outlet on a circuit different from that to which the receiver is connected.
- Consult the dealer or an experienced radio/TV technician for help.

The user shall be cautioned that changes / modifications not approved by the responsible party could void the user's authority to operate the equipment.