



# **AV760**

---

## **Full Range Vacuum Gauge**

# OPERATION MANUAL

**⚠ WARNING** TO REDUCE THE RISK OF INJURY OR PRODUCT DAMAGE,  
READ OPERATION MANUAL PRIOR TO OPERATING PRODUCT.

COPYRIGHT © 2013 - APPION INC. - ALL RIGHTS RESERVED

# Introduction

---

AC/R system operating efficiency depends on proper evacuation - and proper evacuation depends on a reliable vacuum gauge capable of monitoring the entire evacuation process.

The AV760 accurately displays measurements from atmosphere (760,000 microns) all the way to deep vacuum (10 microns), so you can be sure your system is clean, dry and tight.

## Table of Contents

---

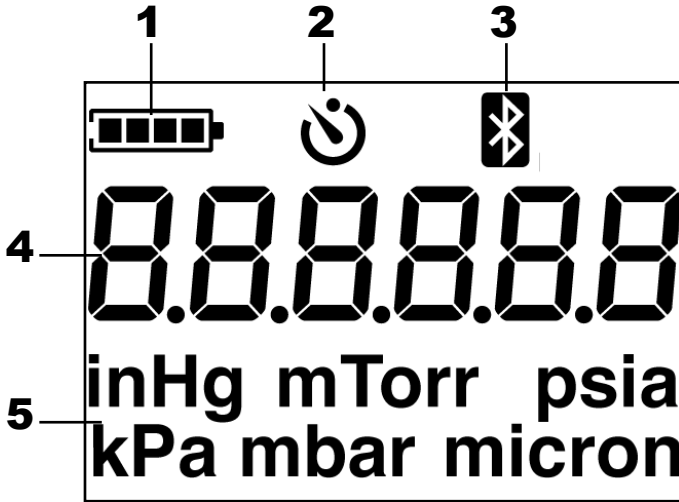
Safety .....	3
Display & Controls .....	4
Using the AV760 .....	5
Maintenance .....	6
Regulatory .....	7

# Safety

---

- Do not connect to systems under pressure.
- Do not use leaky or damaged batteries.
- Use only specified batteries and cleaning agents.
- Dispose of batteries in accordance with any applicable local laws and regulations.

# Display



- 1- Battery Indicator
- 2- Auto Power Off
- 3- Bluetooth Status

- 4- Measurement
- 5- Units

# Controls



<b>Press</b>	Backlight	Power ON	
<b>Hold</b>	Units	Power OFF	Connect BT
<b>Both</b>	Toggle APO Timer		

**Press** a button for the “Press” function above.  
**Hold** a button for 1 second for the “Hold” function.  
 Press **both** Backlight and Power to toggle APO.

# Using the AV760

---

**CAUTION:** Do not connect the AV760 to systems under high pressure. While the AV760 is designed to withstand accidental exposure to positive pressures, continued exposure may cause permanent damage.

1. Using a vacuum-rated connection, connect the AV760 to an available service port furthest from the vacuum pump.
2. Hand-tighten the connections to ensure a tight connection.
3. Press the Power button to turn on the AV760. A countdown will display while the AV760 starts up and performs self testing.

**Tip:** *Connect to the Side Access Port on a Valve Core Removal Tool with the Appion Swivel Vacuum Connector. Make sure the core depressor side is attached to the Valve Core Removal Tool.*

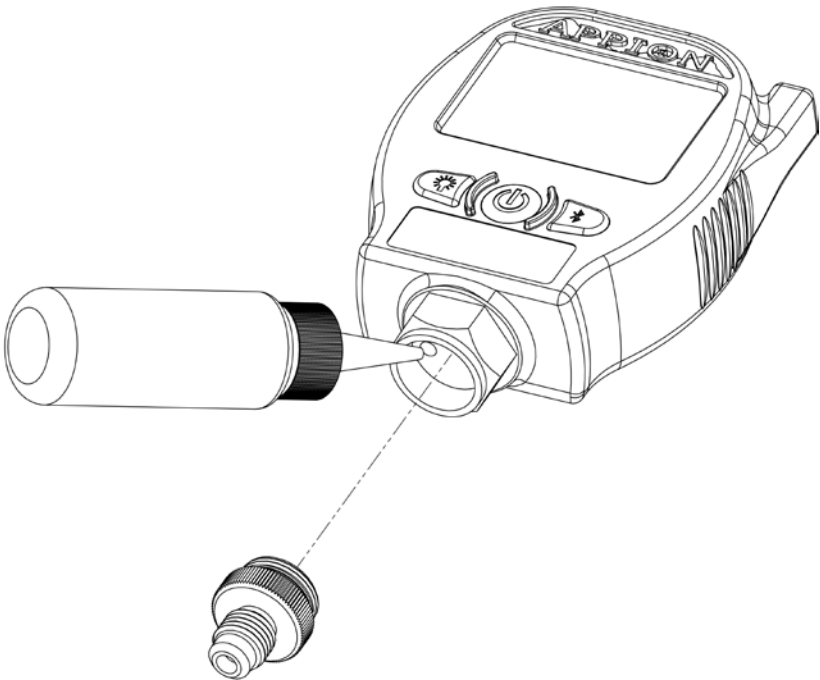
**TIP:** *Make sure the AV760 is vertical, with the fitting pointed downward. This will help minimize contamination from any oil that may be pulled out of the system during evacuation.*

# Maintenance

---

If the AV760 sensor gets dirty and no longer reads correctly, the Sensor Housing can be removed to enable easy cleaning of the sensors.

1. Use Isopropyl Alcohol (70% or higher), and flush the sensor ports as shown below.
2. Drain the fluid out of the sensor, and allow to dry for at least 1 hour.
3. Connect the AV760 to a vacuum pump, and run the pump until 100 microns or less.



# Regulatory Information

---

This device complies with Part 15 of the FCC Rules. Operation is subject to the following two conditions:

- (1) This device may not cause harmful interference, and
- (2) This device must accept any interference received, including interference that may cause undesired operation.

## **Federal Communication Commission Interference Statement**

This equipment has been tested and found to comply with the limits for a Class B digital device, pursuant to Part 15 of the FCC Rules. These limits are designed to provide reasonable protection against harmful interference in a residential installation.

This equipment generates, uses and can radiate radio frequency energy and, if not installed and used in accordance with the instructions, may cause harmful interference to radio communications. However, there is no guarantee that interference will not occur in a particular installation. If this equipment does cause harmful interference to radio or television reception, which can be determined by turning the equipment off and on, the user is encouraged to try to correct the interference by one of the following measures:

- Reorient or relocate the receiving antenna.
- Increase the separation between the equipment and receiver.
- Connect the equipment into an outlet on a circuit different from that to which the receiver is connected.
- Consult the dealer or an experienced radio/TV technician for help.

# Regulatory Information

---

## **FCC Radiation Exposure Statement**

This equipment complies with FCC RF radiation exposure limits set forth for an uncontrolled environment. This transmitter must not be co-located or operating in conjunction with any other antenna or transmitter.

## **FCC Caution**

To assure continued compliance, any changes or modifications not expressly approved by the party responsible for compliance could void the user's authority to operate this equipment.

## **Industry Canada Radio Equipment**

This device complies with Industry Canada licence-exempt RSS-210 standard. Operation is subject to the following two conditions: (1) this device may not cause interference, and (2) this device must accept any interference, including interference that may cause undesired operation of the device.

## **Équipement radio d'Industrie Canada**

Le présent appareil est conforme aux CNR d'Industrie Canada applicables aux appareils radio exempts de licence. L'exploitation est autorisée aux deux conditions suivantes :

- (1) l'appareil ne doit pas produire de brouillage, et
- (2) l'utilisateur de l'appareil doit accepter tout brouillage radioélectrique subi, même si le brouillage est susceptible d'en compromettre le fonctionnement.