



P300

Industrial 300 PSI Pressure Gauge

P500

Compound 500 PSI Pressure Gauge

P800

0-800 PSI Pressure Gauge

OPERATION MANUAL

⚠ WARNING TO REDUCE THE RISK OF INJURY OR PRODUCT DAMAGE,
READ OPERATION MANUAL PRIOR TO OPERATING PRODUCT.

Introduction

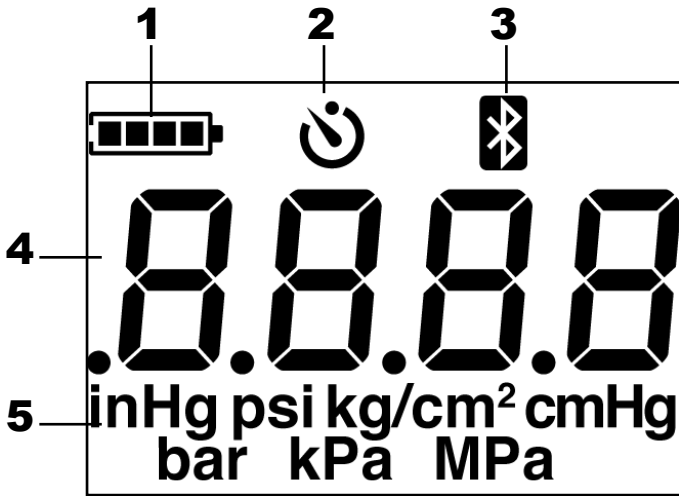
Table of Contents

Safety	3
Display & Controls	4
Using the Pressure Gauge	5
Regulatory	6

Safety

- Do not connect to systems exceeding rated pressure.
- Do not use leaky or damaged batteries.
- Use only specified batteries and cleaning agents.
- Dispose of batteries in accordance with any applicable local laws and regulations.

Display



- 1- Battery Indicator
- 2- Auto Power Off
- 3- Bluetooth Status

- 4- Measurement
- 5- Units

Controls



Press	Backlight	ON/OFF	
Hold	Units	Zero	Connect BT
Both	Toggle APO Timer		

Press a button for the “Press” function above.
Hold a button for 1 second for the “Hold” function.
 Press **both** Backlight and Power to toggle APO.

Using the Pressure Guage

CAUTION: Always wear hand and eye protection when handling connections to systems under pressure.

1. Make sure that all fittings are properly tightened and sealed before connecting the P300/P500/P800 to a system under pressure.
2. Press the Power button to turn on the P300/P500/P800. Wait for the power on self-test to complete before using the readings from the P300/P500/P800.

Tip: Connect to the Side Access Port on a Valve Core Removal Tool with the Female Swivel Adapter.

Regulatory Information

This device complies with Part 15 of the FCC Rules. Operation is subject to the following two conditions:

- (1) This device may not cause harmful interference, and
- (2) This device must accept any interference received, including interference that may cause undesired operation.

Federal Communication Commission Interference Statement

This equipment has been tested and found to comply with the limits for a Class B digital device, pursuant to Part 15 of the FCC Rules. These limits are designed to provide reasonable protection against harmful interference in a residential installation.

This equipment generates, uses and can radiate radio frequency energy and, if not installed and used in accordance with the instructions, may cause harmful interference to radio communications. However, there is no guarantee that interference will not occur in a particular installation. If this equipment does cause harmful interference to radio or television reception, which can be determined by turning the equipment off and on, the user is encouraged to try to correct the interference by one of the following measures:

- Reorient or relocate the receiving antenna.
- Increase the separation between the equipment and receiver.
- Connect the equipment into an outlet on a circuit different from that to which the receiver is connected.
- Consult the dealer or an experienced radio/TV technician for help.

Regulatory Information

FCC Radiation Exposure Statement

This equipment complies with FCC RF radiation exposure limits set forth for an uncontrolled environment. This transmitter must not be co-located or operating in conjunction with any other antenna or transmitter.

FCC Caution

To assure continued compliance, any changes or modifications not expressly approved by the party responsible for compliance could void the user's authority to operate this equipment.

Industry Canada Radio Equipment

This device complies with Industry Canada licence-exempt RSS-210 standard. Operation is subject to the following two conditions: (1) this device may not cause interference, and (2) this device must accept any interference, including interference that may cause undesired operation of the device.

Équipement radio d'Industrie Canada

Le présent appareil est conforme aux CNR d'Industrie Canada applicables aux appareils radio exempts de licence. L'exploitation est autorisée aux deux conditions suivantes :

- (1) l'appareil ne doit pas produire de brouillage, et
- (2) l'utilisateur de l'appareil doit accepter tout brouillage radioélectrique subi, même si le brouillage est susceptible d'en compromettre le fonctionnement.