



# Time Capsule

## Setup Guide



# Contents

## 5 Getting Started

- 8 About Your Time Capsule
- 9 About the AirPort Software
- 10 What You Need to Get Started
- 12 The Time Capsule Status Light

## 14 Setting Up Your Time Capsule

- 15 Using Your Time Capsule to Create Your Wireless Network
- 18 Using AirPort Utility
- 20 Creating a New Wireless Network
- 20 Configuring and Sharing Internet Access
- 22 Setting Advanced Options
- 23 Allowing Wireless Clients to Access Your Network Without Entering a Password
- 24 Using Time Machine with Your Time Capsule

## 26 Tips and Troubleshooting

- 26 If You Can't Connect to the Internet
- 26 If You Forgot Your Network Password or Time Capsule Password
- 28 If Your Time Capsule Isn't Responding
- 29 If Your Time Capsule Status Light Flashes Amber

- 30 If Your Printer Isn't Responding
- 31 Updating AirPort Software
- 31 Time Capsule Placement Considerations
- 32 Items That Can Cause Interference with AirPort
  
- 33 **Learning More, Service, and Support**
  
- 35 **Time Capsule Specifications and Safety Guidelines**
  
- 38 Regulatory Compliance Information

# Getting Started

# 1

Congratulations on purchasing your Time Capsule.  
Read this guide to get started.

Time Capsule offers you the simplicity of fully automated backup for your Wi-Fi network. Using the Time Machine application in Mac OS X v10.5.7 Leopard or later, it's easy and automatic to back up all the computers on your network to a single Time Capsule.

The Time Capsule is also a fully featured AirPort Extreme Base Station that provides simultaneous dual-band wireless networking. When you set up your Time Capsule, it creates two high-speed Wi-Fi networks:

- A 2.4 gigahertz (GHz) network for 802.11b, 802.11g, and 802.11n devices, such as iPhone, iPod touch, and older computers
- A 5 GHz network for 802.11n and 802.11a devices, such as newer computers, iPad, and Apple TV

Wireless devices join the network that provides them the best performance and compatibility, and the Time Capsule shares your broadband Internet connection with computers and devices on your network.

With your Time Capsule, you can:

- Use the Time Machine application in Mac OS X v10.5.7 (or later) to back up all the computers on your wireless network, as well as computers connected to your Time Capsule using Ethernet.

**Note:** Your first backup with Time Capsule and Time Machine could take overnight or longer, depending on how much data you're backing up. To speed up the initial backup, use an Ethernet cable to connect your computer to the LAN port on your Time Capsule. For more information about using Time Machine, see "Using Time Machine with Your Time Capsule" on page 24.

- Create a password-protected wireless home network, and then connect to the Internet and share the connection with other computers and Wi-Fi devices, such as iPad, iPhone, iPod touch, and Apple TV. You can also share files among computers connected to the network.
- Create a guest network, with or without password protection to provide Internet-only access to wireless devices, such as computers, iPad, iPhone, iPod touch, and Apple TV.
- Connect your Time Capsule to your Ethernet network. Wireless-equipped Mac, Windows XP, Windows Vista, or Windows 7 computers can then have access to an entire network without being connected by a cable.
- Connect a supported USB printer to your Time Capsule. Compatible computers on the AirPort network, both wireless and wired, can print to it.
- Connect an additional USB hard drive to your Time Capsule. Compatible computers on the AirPort network, both wireless and wired, can access information on the hard disk.

- Connect a USB hub to your Time Capsule, and then connect multiple USB devices, such as printers or hard disks. All computers on the network have access to those devices.

**Important:** Use AirPort Utility to set up your Time Capsule. Previous versions of AirPort Setup Assistant and AirPort Admin Utility are not compatible with this Time Capsule.

AirPort Utility is installed in the Utilities folder in the Applications folder on a computer using Mac OS X, and in Start > All Programs > AirPort on a computer using Windows. If AirPort Utility isn't installed on your computer, you can download it from [www.apple.com/support/airport](http://www.apple.com/support/airport).

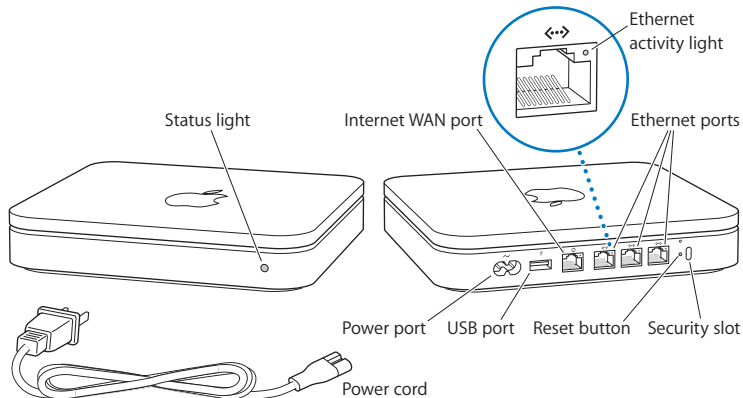
Apple periodically updates AirPort software. It's recommended that you update your software to keep your Time Capsule up to date.

**Note:** To download a copy of this setup guide in your language, open AirPort Utility and choose Help > AirPort Service and Support, and click Manuals.

## About Your Time Capsule

Your Time Capsule has five ports on the back:

- One 10/100/1000Base-T Gigabit Ethernet Wide Area Network (WAN) port for connecting a DSL or cable modem, or for connecting to an existing Ethernet network
- Three 10/100/1000Base-T Gigabit Ethernet Local Area Network (LAN) ports for connecting Ethernet devices, such as printers or computers, or for connecting to an existing Ethernet network
- One USB port for connecting a compatible USB printer, hard drive, or hub for connecting several devices



The reset button next to the ports is used for troubleshooting your Time Capsule. The status light on the front shows the current status.



## About the AirPort Software

Your Time Capsule works with AirPort Utility, installed in the Utilities folder in the Applications folder on a computer using Mac OS X, and in Start > All Programs > AirPort on a computer using Windows.

If AirPort Utility isn't installed on your computer, you can download it from [www.apple.com/support/airport](http://www.apple.com/support/airport).

Use AirPort Utility and follow the instructions on the following pages to set up your Time Capsule and your AirPort wireless network.

**Note:** You must use AirPort Utility v5.5.3 (or later) to set up your Time Capsule. This Time Capsule is not compatible with previous versions of AirPort software.



### AirPort Utility

Use AirPort Utility to set up your Time Capsule to create a wireless network, connect to the Internet, and share compatible USB printers and hard disks. You can also connect your Time Capsule to an existing AirPort Extreme wireless network.

AirPort Utility is also an advanced tool for setting up and managing the Time Capsule, AirPort Extreme, and AirPort Express Base Stations. Use it to manually adjust network, routing, and security settings and other advanced options.



### AirPort status menu

Use the AirPort status menu in the menu bar to switch quickly between AirPort networks, monitor the signal quality of the current network, create a computer-to-computer network, and turn AirPort on or off. The status menu is available on computers using Mac OS X.

---

## What You Need to Get Started

To use your Time Capsule, you need a wireless-enabled computer that's compliant with IEEE 802.11a, 802.11b, 802.11g, or IEEE 802.11n standards. To set up your Time Capsule, your computer must meet the requirements listed below.

**Note:** To use your Time Capsule with Time Machine in Mac OS X, you need to use Mac OS X v10.5.7 or later.

### To set up your Time Capsule using a Mac, you need the following:

- A Mac computer with an AirPort or AirPort Extreme Card installed to set it up wirelessly, or a Mac computer connected to your Time Capsule with an Ethernet cable to set it up using Ethernet
- Mac OS X v10.5.7 or later
- AirPort Utility v5.5.3 or later

### To set up your Time Capsule using a Windows computer, you need the following:

- A Windows computer with 300 MHz or higher processor speed and a compatible 802.11a, 802.11b, or 802.11g, IEEE 802.11n wireless card, or a Windows computer connected to a Time Capsule with an Ethernet cable to set it up using Ethernet
- Windows XP Home or Professional (SP3), Windows Vista (SP2), or Windows 7 (SP1)
- AirPort Utility v5.5.3 or later

## Plugging In Your Time Capsule

Before you plug in your Time Capsule, first connect the appropriate cables to the ports you want to use:

- Connect the Ethernet cable that's connected to your DSL or cable modem (if you will connect to the Internet) to the Ethernet WAN (🌐) port.
- Connect a USB cable connected from the USB (🔌) port on your Time Capsule to a compatible USB printer (if you will print to a USB printer), a hard disk, or a hub.
- Connect an Ethernet cable from any Ethernet device to the Ethernet LAN (↔) ports.

After you've connected the cables for all the devices you plan to use, connect the power cord to the power port and plug your Time Capsule into a power outlet. There is no power switch.

**Important:** Use only the power cord that came with your Time Capsule.

When you plug your Time Capsule into a power outlet, the status light flashes green for one second and then glows amber while your Time Capsule starts up. After your Time Capsule has started up completely, the status light flashes amber until your Time Capsule has been updated with the correct settings. The status light glows solid green after your Time Capsule is properly set up and connected to the Internet or a network.

When you connect Ethernet cables to the Ethernet ports, the lights above them glow solid green.

## The Time Capsule Status Light

The following table explains the Time Capsule light sequences and what they indicate.

Light	Status/description
Off	Your Time Capsule is unplugged.
Solid amber	Your Time Capsule is completing its startup sequence.
Flashing amber	Your Time Capsule can't establish a connection to the network or the Internet, or is encountering a problem. Make sure you have installed AirPort Utility and use it to get information about what might cause the status light to flash amber. See "If Your Time Capsule Status Light Flashes Amber" on page 29.
Solid green	Your Time Capsule is on and working properly. If you choose Flash On Activity from the Status Light pop-up menu (in the Base Station pane of AirPort settings in AirPort Utility), the status light may flash green to indicate normal activity.
Flashing amber and green	There may be a problem starting up. Your Time Capsule will restart and try again.
Solid blue	Your Time Capsule is ready to allow a wireless client access to the network. See "Allowing Wireless Clients to Access Your Network Without Entering a Password" on page 23.

## What's Next

After you plug in your Time Capsule, use AirPort Utility to set it up to work with your Internet connection, USB printer or hard disk, or an existing network. AirPort Utility is located in the Utilities folder in the Applications folder on a computer using Mac OS X, and in Start > All Programs > AirPort on a computer using Windows XP or Windows Vista.

# Setting Up Your Time Capsule

# 2

This chapter provides information and instructions for connecting your Time Capsule to the Internet, and using AirPort Utility to set it up to create or join a wireless network.

This chapter provides an overview of connecting your Time Capsule to the Internet, and using the setup assistant in AirPort Utility to set up your network and other features of your Time Capsule. For more information about wireless networking, and for information about the advanced features of AirPort Utility, refer to “Apple AirPort Networks” at [www.apple.com/support/airport](http://www.apple.com/support/airport).

You can do most of your network setup and configuration tasks using the setup assistant in AirPort Utility. To set advanced options, choose Manual Setup from the Base Station menu of AirPort Utility. See “Setting Advanced Options” on page 22.

## Using Your Time Capsule to Create Your Wireless Network

When you set up your Time Capsule to provide network and Internet access, the following computers and devices can access the wireless AirPort network to share files, play games, and use Internet applications such as web browsers and email applications:

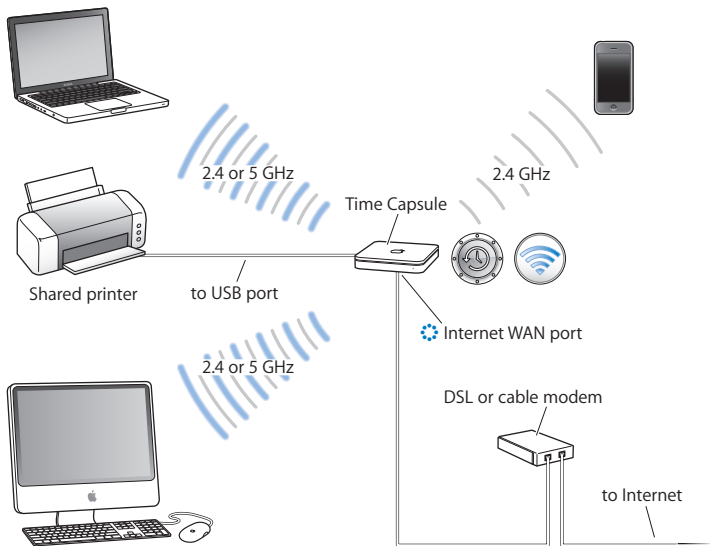
- Mac computers with AirPort or AirPort Extreme Cards
- 802.11a, 802.11b, 802.11g, and IEEE 802.11n wireless-equipped computers
- Other Wi-Fi devices, such as iPad, iPhone, iPod Touch, and Apple TV

Computers connected to your Time Capsule using Ethernet can also access the network to share files and connect to the Internet.

With Mac OS X v10.5.7 or later you can set up Time Machine to back up all the computers on the network to your Time Capsule. See “Using Time Machine with Your Time Capsule” on page 24 for more information.

When you connect a compatible USB printer to your Time Capsule, supported computers on the network (wired and wireless) can print to it.

## Using Time Capsule to create a wireless network



### To set it up:

- 1 Connect your DSL or cable modem to your Time Capsule using the Ethernet WAN (🌐) port.
- 2 If you plan to share a USB printer on the network, connect it to the Time Capsule USB (🔌) port or to a USB hub using a USB cable.



- 3 Open AirPort Utility (located in the Utilities folder in the Applications folder on a computer using Mac OS X, and in Start > All Programs > AirPort on a computer using Windows), select your Time Capsule, and then click Continue.
- 4 Follow the onscreen instructions to create a new network.

**To print from a computer using Mac OS X v10.5 or later:**

- 1 Choose Apple > System Preferences, and then click Print & Fax.
- 2 Click Add (+) and select your printer from the list.
- 3 Click the Add button.

If your printer isn't in the list, use the buttons in the toolbar to search for it.

**To print from a computer using Mac OS X v10.2.7 or later:**

- 1 Open Printer Setup Utility (located in the Utilities folder in the Applications folder).
- 2 Select your printer from the list.

If your printer isn't in the list, click Add and choose Bonjour from the pop-up menu, and then select your printer from the list.

**To print from a computer using Windows XP, Windows Vista, or Windows 7:**

Use Bonjour for Windows and follow the onscreen instructions to connect to your printer.

Computers using AirPort or other compatible wireless cards or adapters can connect to the Internet through your Time Capsule. Computers connected to the Time Capsule Ethernet ports can also access the network and connect to the Internet.

Wireless computers and computers connected to the Ethernet ports can also communicate with each other through your Time Capsule.

## Using AirPort Utility

To set up and configure your Time Capsule, use the setup assistant in AirPort Utility.

**On a Mac computer using Mac OS X v10.5.7 or later:**

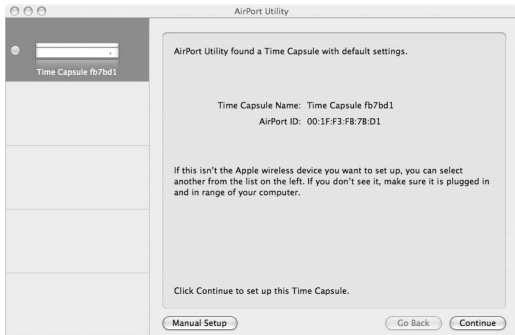
- 1 Open AirPort Utility, located in the Utilities folder in the Applications folder.
- 2 Select your Time Capsule and click Continue.  
If you don't see the Time Capsule you want to configure, click Rescan to scan for available wireless devices, and then select your Time Capsule from the list.
- 3 Follow the onscreen instructions to set up your Time Capsule and your wireless network.

**On a computer using Windows XP (SP3), Windows Vista (SP2), or Windows 7 (SP1):**

- 1 Open AirPort Utility, located in Start > All Programs > AirPort.
- 2 Select your Time Capsule and click Continue.

If AirPort Utility isn't installed on your computer, you can download it from [www.apple.com/support/airport](http://www.apple.com/support/airport).

### 3 Follow the onscreen instructions to set up your Time Capsule and your wireless network.



The AirPort Utility setup assistant asks you questions about the type of network you want to use and the services you want to set up, and helps you enter the appropriate settings.

If you're using your Time Capsule to connect to the Internet, you need a broadband (DSL or cable modem) account with an Internet service provider (ISP), or a connection to the Internet using an existing Ethernet network. If you received specific information from your ISP (such as a static IP address or a DHCP client ID), you may need to enter it in AirPort Utility. Have this information available when you set up your Time Capsule.

## Creating a New Wireless Network

You can use the AirPort Utility setup assistant to create a new wireless network. The setup assistant guides you through the steps necessary to name your network, protect your network with a password, and set other options.

**If you plan to share a USB printer or USB hard disk on your network:**

- 1 Connect the printer or hard disk to the Time Capsule USB (ψ) port.
- 2 Open AirPort Utility, located in the Utilities folder in the Applications folder on a Mac, or in Start > All Programs > AirPort on a computer using Windows.
- 3 Select your Time Capsule and click Continue.

If you don't see the Time Capsule you want to configure, click Rescan to scan for available wireless devices, and then select your Time Capsule from the list.

- 4 Follow the onscreen instructions to create a new network.

## Configuring and Sharing Internet Access

If you plan to share your Internet connection with wireless-enabled computers on your network or with computers connected to the Ethernet ports, you need to set up your Time Capsule as an AirPort base station. After your Time Capsule is set up, computers access the Internet through the AirPort network. Your Time Capsule connects to the Internet and transmits information to the computers over the wireless network.

Before you use AirPort Utility to set up your Time Capsule, connect your DSL or cable modem to the Time Capsule Ethernet WAN (⚡) port. If you're connecting your Time Capsule to an Ethernet network that already has Internet access, connect it to the Ethernet network.

Use the AirPort Utility setup assistant to enter your ISP settings and configure how your Time Capsule shares the settings with other computers.

- 1 Open AirPort Utility, located in the Utilities folder in the Applications folder on a computer using Mac OS X, or in Start > All Programs > AirPort on a computer using Windows.

If AirPort Utility isn't installed on your computer, you can download it from [www.apple.com/support/airport](http://www.apple.com/support/airport).

- 2 Select your Time Capsule and click Continue.

If you're making changes to a Time Capsule that has already been set up, you might have to connect to the network it's created before making changes to the Time Capsule.

To choose the wireless network you want to change on a Mac, use the AirPort status menu in the menu bar. On a computer using Windows, hold the pointer over the wireless connection icon until you see the network name (SSID), and then choose it from the list if there are multiple networks available.

- 3 Follow the onscreen instructions to configure and share Internet access on your Time Capsule.

AirPort Utility provides a quick and easy way to set up your Time Capsule and network. If you want to set additional options for your network, such as restricting access to your network or setting advanced DHCP options, choose Manual Setup from the Base Station menu of AirPort Utility.

## Setting Advanced Options

Use AirPort Utility to set up your Time Capsule manually if you want to set advanced Time Capsule options such as advanced security options, closed networks, DHCP lease time, access control, power controls, user accounts, and more.

### To set advanced options:

- 1 Open AirPort Utility, located in the Utilities folder in the Applications folder on a Mac, and in Start > All Programs > AirPort on a computer using Windows.

If AirPort Utility isn't installed on your computer, you can download it from [www.apple.com/support/airport](http://www.apple.com/support/airport).

- 2 If there's more than one wireless device in the list, select the one you want to configure. If you don't see the Time Capsule you want to configure, click Rescan to scan for available wireless devices, and then select your Time Capsule from the list. If you're making changes to a Time Capsule that has already been set up, you might have to connect to the network it's created before making changes to your Time Capsule.

To choose the wireless network you want to change on a Mac, use the AirPort status menu in the menu bar. On a computer using Windows, hold the pointer over the wireless connection icon until you see the network name (SSID), and then choose it from the list if there are multiple networks available.

- 3 Choose Manual Setup from the Base Station menu. If you're prompted for a password, enter it.

For more about the manual setup features in AirPort Utility, see "Apple AirPort Networks" at [www.apple.com/support/airport](http://www.apple.com/support/airport).

## Allowing Wireless Clients to Access Your Network Without Entering a Password

If your network is password-protected using WPA Personal or WPA/WPA2 Personal, you can provide wireless clients access to your network without requiring them to enter the network password.

When you allow a client access to your network, the client's name and wireless MAC address (or AirPort ID) are stored in the access control list of AirPort Utility until you remove the client from the list. You can also provide 24 hours of access, after which time the client can no longer access your network.

When you give a client access to your wireless network, the client doesn't need to enter the network password.

**To allow a client to access your network without entering the network password:**

- 1 Open AirPort Utility, select your Time Capsule, and then choose Manual Setup from the Base Station menu. Enter the password if necessary.
- 2 Choose Add Wireless Clients from the Base Station menu.
- 3 Select how you want the client to access the network:
  - Select PIN to enter the eight-digit number provided by the client requesting network access.
  - Select "First attempt" to allow network access to the first client attempting to join the network.

While the Time Capsule waits for a client to join the network, the LED glows blue.

Select “Limit client’s access to 24 hours” if you want to provide just one day of access to your network. If you don’t select this option, the client has access until you remove the client from the list.

## Using Time Machine with Your Time Capsule

With the Time Machine application in Mac OS X (Leopard or later) you can back up everything on your computer, including your photos, music, movies, and documents.

After you set up Time Machine, it automatically backs up your computer on a regular basis.

If you’re using Mac OS X v10.5.7 or later, the first time you connect to your Time Capsule, Time Machine asks if you’d like to use it to back up your files. Click “Use as Backup Disk,” and Time Machine takes care of the rest.

Use the Time Machine pane of System Preferences to set up automatic backups, change to a different backup disk, or adjust other settings.

**To set up or adjust Time Machine on a computer using Mac OS X Leopard or later:**

- 1 Choose Apple > System Preferences, and then click Time Machine.
- 2 Slide the switch to ON.
- 3 Click Change Disk.
- 4 Choose your Time Capsule and click “Use for Backup.”



Your first backup with Time Capsule and Time Machine could take overnight or longer, depending on how much data you're backing up. To speed up the initial backup, connect your Time Capsule to your computer using Ethernet. In each subsequent backup, Time Machine backs up only files that have changed since the previous backup, so the backups don't take as long.

Time Capsule is a great wireless backup solution for portable computers. Since the first backup can take some time, plug your portable into a power adapter—this conserves battery power and guarantees that backups won't be interrupted. Also, for the best wireless performance, place your portable computer in the same room as your Time Capsule.

If you shut down your Mac or put it to sleep during a backup, Time Machine stops the backup and then continues from where it left off after your Mac starts up again.

For more information about Time Machine, choose Help > Mac Help from the Finder menu on a computer using Mac OS X Leopard or later, and then type Time Machine in the search field.

# Tips and Troubleshooting

# 3

You can quickly solve most problems with your Time Capsule by following the advice in this chapter.

## If You Can't Connect to the Internet

- Try connecting to the Internet directly from your computer. If you can't connect, check to make sure your network settings are correct. If they appear to be correct and you still can't connect, contact your Internet service provider (ISP).
- Make sure you're connecting to the correct wireless network.

## If You Forgot Your Network Password or Time Capsule Password

You can clear the AirPort network password or Time Capsule password by resetting your Time Capsule.

**To reset the Time Capsule password:**

- 1 Use something pointed (such as a ballpoint pen) to press and hold down the reset button for one second.

**Important:** If you hold the reset button for more than one second, you may lose your network settings.

- 2 Select your AirPort network.
  - *On a Mac*, use the AirPort status menu in the menu bar to select the network created by your Time Capsule (the network name doesn't change).
  - *On a computer using Windows*, hold the pointer over the wireless connection icon until you see your AirPort network name (SSID), and choose it from the list if there are multiple networks available.
- 3 Open AirPort Utility (in the Utilities folder in the Applications folder on a Mac, and in Start > All Programs > AirPort on a computer using Windows).

If AirPort Utility isn't installed on your computer, you can download it from [www.apple.com/support/airport](http://www.apple.com/support/airport).
- 4 Select your Time Capsule, and then choose Manual Setup from the Base Station menu.
- 5 Click AirPort in the toolbar, and then click Base Station.
- 6 Enter a new password for your Time Capsule.
- 7 Click Wireless and choose an encryption method from the Wireless Security pop-up menu to turn on encryption and activate password protection for your AirPort network. If you turn on encryption, enter a new password for your AirPort network.
- 8 Click Update to restart your Time Capsule and load the new settings.

## If Your Time Capsule Isn't Responding

Try unplugging it and plugging it back in.

If your Time Capsule stops responding completely, you may need to reset it to the factory default settings.

**Important:** Resetting your Time Capsule to factory default settings erases all of the current settings and resets them to the settings that came with your Time Capsule.

### To return your Time Capsule to the factory settings:

- Use something pointed (such as a ballpoint pen) to press down and hold the reset button until the status light flashes quickly (about 5 seconds).

Your Time Capsule resets with the following settings:

- Your Time Capsule receives its IP address using DHCP.
- The network name is reset to Apple Network XXXXXX (where XXXXXX is replaced with the last six digits of the AirPort ID).
- The Time Capsule password is reset to *public*.

### If your Time Capsule still isn't responding, try the following:

- 1 Unplug your Time Capsule.
- 2 Use something pointed to press and hold down the reset button while you plug in your Time Capsule.

## If Your Time Capsule Status Light Flashes Amber

The Ethernet cable may not be connected properly, your Time Capsule may be out of range of an AirPort network, or there may be a problem with your Internet service provider. If you're connected to the Internet with a DSL or cable modem, the modem may have lost its connection to the network or the Internet. Even if the modem seems to be working properly, try disconnecting it from its power supply, waiting a few seconds, and then reconnecting it. Make sure your Time Capsule is connected directly to the modem via Ethernet before reconnecting power to the modem.

For more information about why the light is flashing, open AirPort Utility, select your Time Capsule, and then choose Manual Setup from the Base Station menu. Click Base Station Status to display information about the flashing light.

You can also select "Monitor base station for problems" in AirPort preferences. If the base station has a problem, AirPort Utility opens and walks you through solving the problem.

## If Your Printer Isn't Responding

If you connected a printer to the USB port on your Time Capsule and the computers on the AirPort network can't print, try the following:

- 1 Make sure the printer is plugged in and turned on.
- 2 Make sure the cables are securely connected to the printer and to the Time Capsule USB port.
- 3 Make sure the printer is selected in the Printer List window on client computers.

### **On a Mac using Mac OS X v10.5 or later:**

- Choose Apple > System Preferences, and then click Print & Fax.
- Click Add (+) and select your printer in the list, and then click Add (+).

### **On a Mac using Mac OS X v10.2.7 or later:**

- Open Printer Setup Utility, located in the Utilities folder in the Applications folder.
- If the printer isn't in the list, click Add.
- Choose Bonjour from the pop-up menu, select the printer and click Add (+).

### **On a computer using Windows:**

- Open "Printers and Faxes" from the Start menu.
  - Select the printer. If the printer isn't in the list, click Add Printer and then follow the onscreen instructions.
  - If Bonjour for Windows is installed, click the Bonjour Printer, click the Bonjour Printer Wizard on the desktop, and then follow the onscreen instructions for setting up a printer.
- 4 Turn off the printer, wait a few seconds, and then turn it back on.

## Updating AirPort Software

Apple periodically updates AirPort software. It is recommended that you update your Time Capsule to use the latest software.

You can select “Check for updates when opening AirPort Utility,” or “Check for updates” in AirPort preferences. If you select “Check for updates,” choose an increment of time, such as weekly, from the pop-up menu to automatically check for updates.

## Time Capsule Placement Considerations

The following recommendations can help your Time Capsule achieve the best wireless range and network coverage.

- Place your Time Capsule in an open area where there are few obstructions, such as large pieces of furniture or walls. Try to place it away from metallic surfaces.
- If you place your Time Capsule behind furniture, keep at least an inch of space between the Time Capsule and the edge of the furniture.
- Avoid placing your Time Capsule in areas surrounded by metal surfaces on three or more sides.
- If you place your Time Capsule in an entertainment center with your stereo equipment, avoid surrounding your Time Capsule with audio, video, or power cables. Place your Time Capsule so that the cables are to one side. Maintain as much space as possible between your Time Capsule and the cables.
- Try to place your Time Capsule at least 25 feet (7.6 meters) from any microwave oven, 2.4 or 5 gigahertz (GHz) cordless phone, and other sources of interference.
- Do not place other objects (books, papers, small pets, etc.) on top of the Time Capsule. It may interfere with Time Capsule cooling.

## Items That Can Cause Interference with AirPort

The farther away the interference source, the less likely it is to cause a problem.

The following can interfere with AirPort communication:

- Microwave ovens
- Direct Satellite Service (DSS) radio frequency leakage
- The original coaxial cable that came with certain types of satellite dishes. Contact the device manufacturer and obtain newer cables.
- Certain electrical devices such as power lines, electrical railroad tracks, and power stations.
- Cordless telephones that operate in the 2.4 or 5 GHz range. If you have problems with your phone or AirPort communication, change the channel your base station or Time Capsule uses, or change the channel your phone uses.
- Nearby base stations using adjacent channels. For example, if base station A is set to channel 1, base station B should be set to channel 6 or 11.



# Learning More, Service, and Support

# 4

You can find more information about using your Time Capsule on the web and in onscreen help.

## Online Resources

For the latest information about the Time Capsule, go to [www.apple.com/airport](http://www.apple.com/airport).

To register your Time Capsule, go to [www.apple.com/register](http://www.apple.com/register).

For AirPort support information, forums with product-specific information and feedback, and the latest Apple software downloads, go to [www.apple.com/support/airport](http://www.apple.com/support/airport).

For support outside of the United States, go to [www.apple.com/support](http://www.apple.com/support), and then choose your country.

## Onscreen Help

To learn more about using AirPort Utility with your Time Capsule, open AirPort Utility and choose Help > AirPort Utility Help.

## Obtaining Warranty Service

If your Time Capsule appears to be damaged or doesn't function properly, follow the advice in this booklet, the onscreen help, and the online resources.

If your Time Capsule still doesn't function, go to [www.apple.com/support](http://www.apple.com/support) for information about getting warranty service.

## Finding the Serial Number of Your Time Capsule

The serial number is printed on the bottom of your Time Capsule.

# Time Capsule Specifications and Safety Guidelines

## Time Capsule Specifications

- *Frequency Band:* 2.4 and 5 GHz
- *Radio Output Power:* Up to 23 dBm (nominal)
- *Standards:* 802.11 DSSS 1 and 2 Mbps standard, 802.11a, 802.11b, 802.11g, and 802.11n specifications

## Interfaces

- 1 RJ-45 10/100/1000Base-T Gigabit Ethernet WAN (🌐)
- 3 RJ-45 10/100/1000Base-T Gigabit Ethernet LAN (↔)
- Universal Serial Bus (USB ⚡) 2.0
- 802.11 a/b/g/n AirPort Extreme wireless

## Environmental Specifications

- *Operating Temperature:* 32° F to 95° F (0° C to 35° C)
- *Storage Temperature:* -13° F to 140° F (-25° C to 60° C)
- *Relative Humidity (Operational):* 20% to 80% relative humidity
- *Relative Humidity (Storage):* 10% to 90% relative humidity, noncondensing

## Size and Weight

- *Length:* 7.75 inches (197.0 mm)
- *Width:* 7.75 inches (197.0 mm)
- *Height:* 1.43 inches (36.33 mm)
- *Weight:* 3.5 pounds (1.6 kilograms)

## Hardware Media Access Control (MAC) Addresses

The Time Capsule has three hardware addresses printed on the bottom of the case:

- *AirPort ID:* The two addresses used to identify the Time Capsule on a wireless network.
- *Ethernet ID:* You may need to provide this address to your ISP to connect your Time Capsule to the Internet.

## Using Your Time Capsule Safely

- The only way to shut off power completely to your Time Capsule is to disconnect it from the power source.
- When connecting or disconnecting your Time Capsule, always hold the plug by its sides. Keep fingers away from the metal part of the plug.
- Your Time Capsule should not be opened for any reason, even when it's unplugged. If your Time Capsule needs service, see “Learning More, Service, and Support” on page 33.
- Never force a connector into a port. If the connector and port don't join with reasonable ease, they probably don't match. Make sure that the connector matches the port and that you've positioned the connector correctly in relation to the port.

## About Operating and Storage Temperatures

When you're using your Time Capsule, it is normal for the case to get warm. The Time Capsule case functions as a cooling surface that transfers heat from inside the unit to the cooler air outside.

## Avoid Wet Locations

**WARNING:** To reduce the chance of shock or injury, do not use your Time Capsule in or near water or wet locations.

- Keep your Time Capsule away from sources of liquid, such as drinks, washbasins, bathtubs, shower stalls, and so on.
- Protect your Time Capsule from direct sunlight and rain or other moisture.
- Take care not to spill any food or liquid on your Time Capsule. If you do, unplug it before cleaning up the spill.
- Do not use your Time Capsule outdoors. The Time Capsule is an indoor product.

## Do Not Make Repairs Yourself

**WARNING:** Do not attempt to open your Time Capsule or disassemble it. You run the risk of electric shock and voiding the limited warranty. No user-serviceable parts are inside.

## About Handling

Your Time Capsule may be damaged by improper storage or handling. Be careful not to drop your Time Capsule when transporting it.

## Regulatory Compliance Information

### FCC Declaration of Conformity

This device complies with part 15 of the FCC rules. Operation is subject to the following two conditions: (1) This device may not cause harmful interference, and (2) this device must accept any interference received, including interference that may cause undesired operation. See instructions if interference to radio or television reception is suspected.

### Radio and Television Interference

This computer equipment generates, uses, and can radiate radio-frequency energy. If it is not installed and used properly—that is, in strict accordance with Apple's instructions—it may cause interference with radio and television reception.

This equipment has been tested and found to comply with the limits for a Class B digital device in accordance with the specifications in Part 15 of FCC rules. These specifications are designed to provide reasonable protection against such interference in a residential installation. However, there is no guarantee that interference will not occur in a particular installation.

You can determine whether your computer system is causing interference by turning it off. If the interference stops, it was probably caused by the computer or one of the peripheral devices.

If your computer system does cause interference to radio or television reception, try to correct the interference by using one or more of the following measures:

- Turn the television or radio antenna until the interference stops.
- Move the computer to one side or the other of the television or radio.
- Move the computer farther away from the television or radio.
- Plug the computer into an outlet that is on a different circuit from the television or radio. (That is, make certain the computer and the television or radio are on circuits controlled by different circuit breakers or fuses.)

If necessary, consult an Apple Authorized Service Provider or Apple. See the service and support information that came with your Apple product. Or, consult an experienced radio/television technician for additional suggestions.

**Important:** Changes or modifications to this product not authorized by Apple Inc. could void the EMC compliance and negate your authority to operate the product.

This product was tested for FCC compliance under conditions that included the use of Apple peripheral devices and Apple shielded cables and connectors between system components. It is important that you use Apple peripheral devices and shielded cables and connectors between system components to reduce the possibility of causing interference to radios, television sets, and other electronic devices. You can obtain Apple peripheral devices and the proper shielded cables and connectors through an Apple-authorized dealer. For non-Apple peripheral devices, contact the manufacturer or dealer for assistance.

Responsible party (contact for FCC matters only)  
Apple Inc. Corporate Compliance  
1 Infinite Loop M/S 26-A  
Cupertino, CA 95014

### Wireless Radio Use

This device is restricted to indoor use when operating in the 5.15 to 5.25 GHz frequency band.

Cet appareil doit être utilisé à l'intérieur.

この製品は、周波数帯域 5.18 ~ 5.32 GHz で動作しているときは、屋内においてのみ使用可能です。

### Exposure to Radio Frequency Energy

The radiated output power of the AirPort Card in this device is below the FCC and EU radio frequency exposure limits for uncontrolled equipment. This device should be operated with a minimum distance of at least 20 cm between the AirPort Card antennas and a person's body and must not be co-located or operated with any other antenna or transmitter subject to the conditions of the FCC Grant.

## Canadian Compliance Statement

This device complies with Industry Canada license-exempt RSS standard(s). Operation is subject to the following two conditions: (1) this device may not cause interference, and (2) this device must accept any interference, including interference that may cause undesired operation of the device.

Cet appareil est conforme aux normes CNR exemptes de licence d'Industrie Canada. Le fonctionnement est soumis aux deux conditions suivantes : (1) cet appareil ne doit pas provoquer d'interférences et (2) cet appareil doit accepter toute interférence, y compris celles susceptibles de provoquer un fonctionnement non souhaité de l'appareil.

## Industry Canada Statement

Complies with the Canadian ICES-003 Class B specifications. Cet appareil numérique de la classe B est conforme à la norme NMB-003 du Canada. This device complies with RSS 210 of Industry Canada.

## Europe–EU Declaration of Conformity



### Български

Apple Inc. декларира, че това WLAN Access Point е в съответствие със съществените изисквания и другите приложения правила на Директива 1999/5/EC.

### Česky

Společnost Apple Inc. tímto prohlašuje, že tento WLAN Access Point je ve shodě se základními požadavky a dalšími příslušnými ustanoveními směrnice 1999/5/ES.

### Dansk

Undertegnede Apple Inc. erklærer herved, at følgende udstyr WLAN Access Point overholder de væsentlige krav og øvrige relevante krav i direktiv 1999/5/EF.

### Deutsch

Hiermit erklärt Apple Inc., dass sich das Gerät WLAN Access Point in Übereinstimmung mit den grundlegenden Anforderungen und den übrigen einschlägigen Bestimmungen der Richtlinie 1999/5/EG befinden.

### Eesti

Käesolevaga kinnitab Apple Inc., et see WLAN Access Point vastab direktiivi 1999/5/EÜ põhinõuetele ja nimetatud direktiivist tulenevatele teistele asjakohastele sätetele.

### English

Hereby, Apple Inc. declares that this WLAN Access Point is in compliance with the essential requirements and other relevant provisions of Directive 1999/5/EC.

### Español

Por medio de la presente Apple Inc. declara que este WLAN Access Point cumple con los requisitos esenciales y cualesquiera otras disposiciones aplicables o exigibles de la Directiva 1999/5/CE.

### Ελληνικά

Με την παρούσα, η Apple Inc. δηλώνει ότι αυτή η συσκευή WLAN Access Point συμμορφώνεται προς τις βασικές απαιτήσεις και τις λοιπές σχετικές διατάξεις της Οδηγίας 1999/5/ΕΚ.

### Français

Par la présente Apple Inc. déclare que l'appareil WLAN Access Point est conforme aux exigences essentielles et aux autres dispositions pertinentes de la directive 1999/5/CE.

### Islenska

Apple Inc. lýsir því hér með yfir að þetta tæki WLAN Access Point fullnægir lágmarkskröfum og öðrum viðeigandi ákvæðum Evróputilskipunar 1999/5/EC.

### Italiano

Con la presente Apple Inc. dichiara che questo dispositivo WLAN Access Point è conforme ai requisiti essenziali ed alle altre disposizioni pertinenti stabilite dalla direttiva 1999/5/CE.

### Latviski

Ar šo Apple Inc. deklarē, ka WLAN Access Point ierīce atbilst Direktīvas 1999/5/EK būtiskajām prasībām un citiem ar to saistītajiem noteikumiem.

### Lietuvių

Šiuo „Apple Inc.“ deklaruoja, kad šis WLAN Access Point atitinka esminius reikalavimus ir kitas 1999/5/EB Direktyvos nuostatas.

### Magyar

Alulírott, Apple Inc. nyilatkozom, hogy a WLAN Access Point megfelel a vonatkozó alapvető követelményeknek és az 1999/5/EC irányelv egyéb előírásainak.

## Malti

Hawnehk, Apple Inc., jiddikjara li dan WLAN Access Point jikkonforma mal-htigijiet essenzjali u ma provvedimenti oħrajn relevanti li hemm fid-Dirrettiva 1999/5/EC.

## Nederlands

Hierbij verklaart Apple Inc. dat het toestel WLAN Access Point in overeenstemming is met de essentiële eisen en de andere bepalingen van richtlijn 1999/5/EG.

## Norsk

Apple Inc. erklærer herved at dette WLAN Access Point -apparatet er i samsvar med de grunnleggende kravene og øvrige relevante krav i EU-direktivet 1999/5/EF.

## Polski

Niniejszym Apple Inc. oświadcza, że ten WLAN Access Point są zgodne z zasadniczymi wymogami oraz pozostałymi stosownymi postanowieniami Dyrektywy 1999/5/CE.

## Português

Apple Inc. declara que este dispositivo WLAN Access Point está em conformidade com os requisitos essenciais e outras disposições da Directiva 1999/5/CE.

## Română

Prin prezenta, Apple Inc. declară că acest aparat WLAN Access Point este în conformitate cu cerințele esențiale și cu celelalte prevederi relevante ale Directivei 1999/5/CE.

## Slovensko

Apple Inc. izjavlja, da je ta WLAN Access Point skladne z bistvenimi zahtevami in ostalimi ustreznimi določili direktive 1999/5/ES.

## Slovensky

Apple Inc. týmto vyhlasuje, že toto WLAN Access Point spĺňa základné požiadavky a všetky príslušné ustanovenia Smernice 1999/5/ES.

## Suomi

Apple Inc. vakuuttaa täten, että tämä WLAN Access Point tyyppinen laite on direktiivin 1999/5/EY oleellisten vaatimusten ja sitä koskevien direktiivin muiden ehtojen mukainen.

## Svenska

Härmed intygar Apple Inc. att denna WLAN Access Point står i överensstämmelse med de väsentliga egenskapskrav och övriga relevanta bestämmelser som framgår av direktiv 1999/5/EG.

A copy of the EU Declaration of Conformity is available at: [www.apple.com/euro/compliance](http://www.apple.com/euro/compliance)

This Apple WLAN Access Point can be used in the following countries:

AT	BG	BE	CY	CZ	DK
EE	FI	FR	DE	GR	HU
IE	IT	LV	LT	LU	MT
NL	PL	PT	RO	SK	SL
ES	SE	GB	IS	LI	NO
CH					

## Korea Warning Statements

### 대한민국 규정 및 준수

방통위고시에 따른 고지사항  
해당 무선설비는 운용 중 전파혼신 가능성이 있음,  
이 기기는 인명안전과 관련된 서비스에 사용할 수 없습니다.

B급 기기(가정용 방송통신기자재)

이 기기는 가정용(B급) 전자파적합기로서 주로 가정에서 사용하는 것을 목적으로 하며, 모든 지역에서 사용할 수 있습니다.

## Singapore Wireless Certification

Complies with  
IDA Standards  
DB00063



## Taiwan Wireless Statements

### 無線設備の警告聲明

經型式認證合格之低功率射頻電機，非經許可，公司、商號或使用者均不得擅自變更頻率、加大功率或變更原設計之特性及功能。低功率射頻電機之使用不得影響飛航安全及干擾合法通信；經發現有干擾現象時，應立即停用，並改善至無干擾時方得繼續使用。前項合法通信指依電信法規定作業之無線電通信。低功率射頻電機須忍受合法通信或工業、科學及醫療用電波輻射性電機設備之干擾。

### 如有這 頻率:

於 5.25GHz 至 5.35GHz 區域內操作之  
無線設備的警告聲明

工作頻率 5.250 ~ 5.350GHz 該频段限於室內使用。

## Taiwan Class B Statement

### Class B 設備的警告聲明

NL

#### 警告

本電池如果更換不正確會有爆炸的危險  
請依製造商說明書處理用過之電池

## Japan VCCI Class B Statement



### 情報処理装置等電波障害自主規制について

この装置は、情報処理装置等電波障害自主規制協議会 (VCCI) の基準に基づくクラス B 情報技術装置として。この装置は家庭環境で使用されることを目的としていますが、この装置がラジオやテレビジョン受信機に近接して使用されると、受信障害を引き起こすことがあります。

取扱説明書に従って正しい取扱をしてください。

## Russia



## Disposal and Recycling Information



This symbol indicates that your product must be disposed of properly according to local laws and regulations. When your product reaches its end of life, contact Apple or your local authorities to learn about recycling options.

For information about Apple's recycling program, go to [www.apple.com/recycling](http://www.apple.com/recycling).

## European Union — Disposal Information



This symbol means that according to local laws and regulations your product should be disposed of separately from household waste. When this product reaches its end of life, take it to a collection point designated by local authorities. Some collection points accept products for free. The separate collection and recycling of your product at the time of disposal will help conserve natural resources and ensure that it is recycled in a manner that protects human health and the environment.

## Türkiye

EEE yönetmeliğine (Elektrikli ve Elektronik Eşyalarda Bazı Zararlı Maddelerin Kullanımının Sınırlanırılmasına Dair Yönetmelik) uygundur.

## Brasil—Informações sobre descarte e reciclagem



O símbolo acima indica que este produto e/ou sua bateria não devem ser descartadas no lixo doméstico. Quando decidir descartar este produto e/ou sua bateria, faça-o de acordo com as leis e diretrizes ambientais locais. Para informações sobre o programa de reciclagem da Apple, pontos de coleta e telefone de informações, visite [www.apple.com/br/environment](http://www.apple.com/br/environment)

### Battery Disposal Information

Dispose of batteries according to your local environmental laws and guidelines.

**Deutschland:** Dieses Gerät enthält Batterien. Bitte nicht in den Hausmüll werfen. Entsorgen Sie dieses Gerät am Ende seines Lebenszyklus entsprechend der maßgeblichen gesetzlichen Regelungen.

**Nederlands:** Gebruikte batterijen kunnen worden ingeleverd bij de chemokar of in een speciale batterijcontainer voor klein chemisch afval (kca) worden gedeponereerd.

## 台灣



廢電池請回收

### China Battery Statement

警告：不要刺破或焚燒。該電池不含水銀。

### Taiwan Battery Statement

警告：請勿戳刺或焚燒。此電池不含汞。

## 中国

有毒或有害物质	零部件	
	电路板	附件
铅 (Pb)	X	X
汞 (Hg)	O	O
镉 (Cd)	O	O
六价铬 (Cr, VI)	O	O
多溴联苯 (PBB)	O	O
多溴二苯醚 (PBDE)	O	O

O: 表示该有毒有害物质在该部件所有均质材料中的含量均在 SJ/T 11363-2006 规定的限量要求以下。

X: 表示该有毒有害物质至少在该部件的某一均质材料中的含量超出 SJ/T 11363-2006 规定的限量要求。

根据中国电子行业标准 SJ/T11364-2006，本产品及其某些内部或外部组件上可能带有环保使用期限标识。取决于组件和组件制造商，产品及其组件上的使用期限标识可能有所不同。组件上的使用期限标识优先于产品上任何与之相冲突的或不同的使用期限标识。





[www.apple.com/airport](http://www.apple.com/airport)  
[www.apple.com/support/airport](http://www.apple.com/support/airport)

© 2011 Apple Inc. All rights reserved.

Apple, the Apple logo, AirPort, AirPort Express, AirPort Extreme, Apple TV, Bonjour, Finder, iPhone, iPod touch, Leopard, Mac, Mac OS, Time Capsule, and Time Machine are trademarks of Apple Inc., registered in the U.S. and other countries.

iPad is a trademark of Apple Inc.

Other product and company names mentioned herein may be trademarks of their respective companies.

034-5910-A

Printed in XXXX