

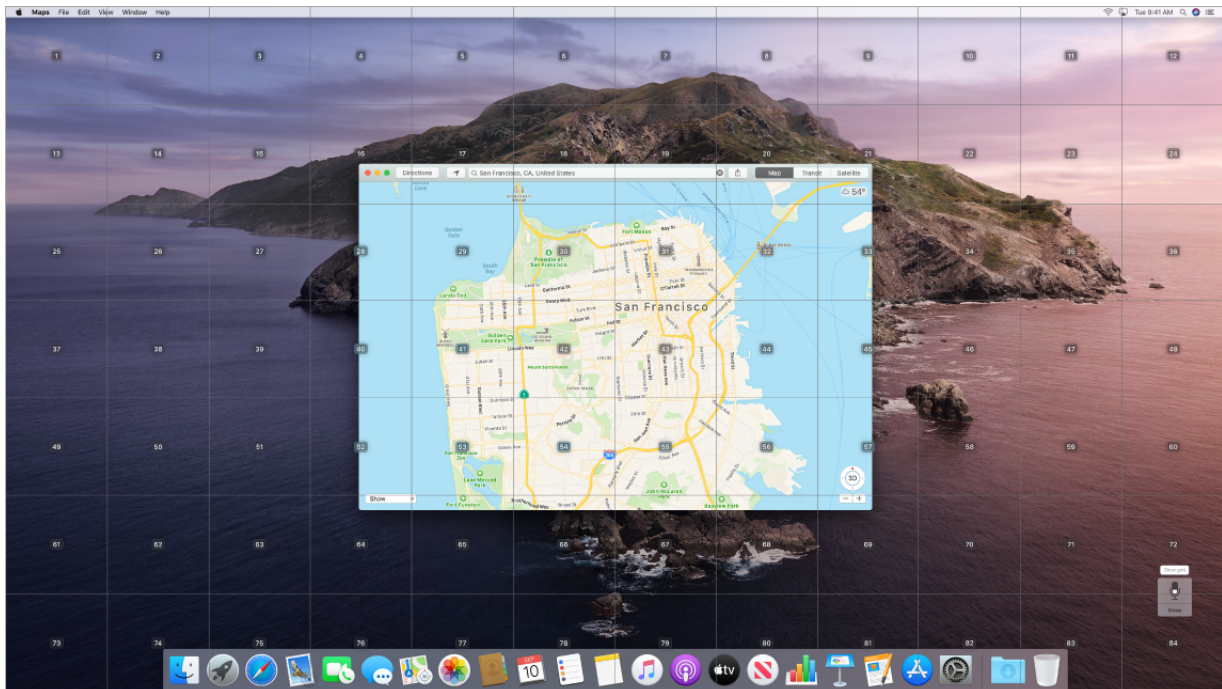
Accurate dictation. If you can't type by hand, accurate dictation is essential for communication. Voice Control brings the latest advances in machine learning for speech-to-text transcription.

You can add custom words to help Voice Control recognize the words you commonly use. Choose System Preferences > Accessibility, select Voice Control, then click Vocabulary and add the words you want. To customize commands in the Voice Control preferences page, click Commands, then select to keep default commands, or add new ones.

Note: The dictation accuracy improvements are for US English only.

Rich text editing. Rich text editing commands in Voice Control let you quickly make corrections and move on to expressing your next idea. You can replace one phrase with another—quickly position the cursor to make edits, and select text with precision. Try saying “Replace ‘John will be there soon’ with ‘John just arrived.’” When you correct words, word and emoji suggestions help you quickly select what you want.

Comprehensive navigation. Navigate using voice commands to open and interact with apps. To click an item, just say its accessibility label name. You can also say “show numbers” to see number labels appear next to all clickable items, then say a number to click. If you need to touch a part of the screen without a control, you can say “show grid” to superimpose a grid on your screen and do things, like click, zoom, drag, and more.



Hover and zoom. Use Hover Text to display high-resolution text for screen items under your cursor. Press Command while hovering over text with the pointer, and a window with zoomed text appears on your screen.



Zoom Display lets you keep one monitor zoomed in tightly and another at its standard resolution. View the same screen up-close and at a distance simultaneously.




New enhancements for VoiceOver. If you prefer the natural voice of Siri, you can now choose to use Siri for VoiceOver or Speech. Simplified keyboard navigation requires less drilling into unique focus groups—making it even easier to navigate with VoiceOver. You can also store custom punctuation marks in iCloud, and choose from International Braille tables. And if you're a developer, VoiceOver now reads aloud line numbers, break points, and warnings errors in the Xcode text editor.

Color Enhancements. If you have a color vision deficiency, you can now adjust your Mac display colors using new color filter options. It's easy to toggle this preference on or off to quickly differentiate a color using the Accessibility Options panel, which you can access by pressing Command-Option-F5.

Learn more. Go to [Mac Accessibility](#).

More resources, service, and support for your Mac

You can find more information about your Mac Pro in System Report, Apple Diagnostics, and through online resources.

System Report. To get information about your Mac Pro, use System Report. It shows you what hardware and software is installed, the serial number and operating system version, how much memory is installed, and more. To open System Report, choose Apple menu  > About This Mac, then click System Report.

Apple Diagnostics. You can use Apple Diagnostics to help determine if there's a problem with one of the computer's components, such as the memory or processor. Apple Diagnostics helps to identify the potential source of a hardware issue and provides first steps to try and resolve it. Apple Diagnostics will also help you get in touch with Apple Support if you need more help.

Before using Apple Diagnostics, disconnect any external devices, such as a hard disk or external display. Be sure your Mac Pro is connected to the Internet.

To start Apple Diagnostics, restart your Mac Pro and hold down the D key as it starts up. If prompted, select the language for your location. Press the Return key or click the right arrow button. The basic Apple Diagnostics test takes a few minutes to complete. If issues are found, a description of the issue appears with additional instructions. Make a note of any reference codes before you exit Apple Diagnostics.

Online resources. For online service and support information, go to [Welcome to Apple Support](#). You can learn about Apple products, view online manuals, and check for software updates. Connect with other Apple users, and get service, support, and professional advice from Apple.

AppleCare support. If you need assistance, AppleCare representatives can help you with installing and opening apps, and with troubleshooting. Call the support center number nearest you (the first 90 days are complimentary). Have the purchase date and your Mac Pro serial number ready when you call.

A complete list of support telephone numbers is available on the web at [Contact Apple for support and service](#). Telephone numbers are subject to change, and local and national telephone rates may apply.

Your 90 days of complimentary telephone support begins on the date of purchase.

Safety, handling, and regulatory information

Important safety information for your Mac

⚠ WARNING: Failure to follow these safety instructions could result in fire, electric shock, or other injuries, or damage to your Mac Pro or other property. Read all safety information below before using your Mac Pro.

Handling. Set up your Mac Pro on a hard, stable work surface that allows for adequate air circulation under and around the computer. Don't block the front or back of the computer, and never push objects into the ventilation openings. Your Mac Pro can be damaged if dropped, burned, punctured, or crushed, or if it comes in contact with liquids, oils, and lotions.

Important: Do not attempt to operate your Mac Pro with its cover removed. Doing so will affect cooling and may damage components.

Optional Wheel Kit. Your configured Mac Pro must not weigh more than 25 kg (55 pounds) if it is fitted with the optional wheel kit. Computers that weigh more than 25 kg don't comply with safety standard stability requirements, if they're on wheels. Heavier computers should rest on the standard feet.

Liquid exposure. Keep your Mac Pro away from sources of liquid, such as drinks, oils, lotions, washbasins, bathtubs, shower stalls, and so on. Protect your Mac Pro from dampness, humidity, or wet weather, such as rain, snow, and fog.

Power. The only way to turn off power completely is to unplug the power cord. Make sure at least one end of the power cord is within easy reach so that you can unplug your Mac Pro when you need to. Unplug the power cord (by pulling the plug, not the cord) and disconnect all cables if any of the following conditions exists:

- You want to install memory, GPU modules, or expansion cards.
- The power cord or plug becomes frayed or otherwise damaged.
- You spill something into the case.
- Your Mac Pro is exposed to rain or excess moisture.
- Your Mac Pro has been dropped, or the case has been damaged.
- You suspect that your Mac Pro needs service or repair.

- You want to clean the case (use only the recommended procedure, described later in this document).

WARNING: Mac Pro incorporates an interlock circuit that helps to protect you from hazardous energy and injury from moving fan blades when the fan is operating at high speeds. Do not attempt to defeat the interlock circuitry.


Power specifications:

- *Line voltage:* 100 to 125 V AC @12 A
- *Line voltage:* 220 to 240 V AC @ 6 A
- *Maximum continuous power:* 1280 W @ 108 to 125 V or 220 to 240 V
- *Maximum continuous power:* 1180 W @ 100 to 107 V
- *Frequency:* 50 to 60 Hz, single phase

Note: A line voltage of at least 108 V is required for maximum power.

WARNING: Your AC cord has a three-wire grounding plug (a plug that has a grounding pin). This plug fits only a grounded AC outlet. If you're unable to insert the plug into an outlet because the outlet isn't grounded, contact a licensed electrician to replace the outlet with a properly grounded one. Do not defeat the purpose of the grounding pin.

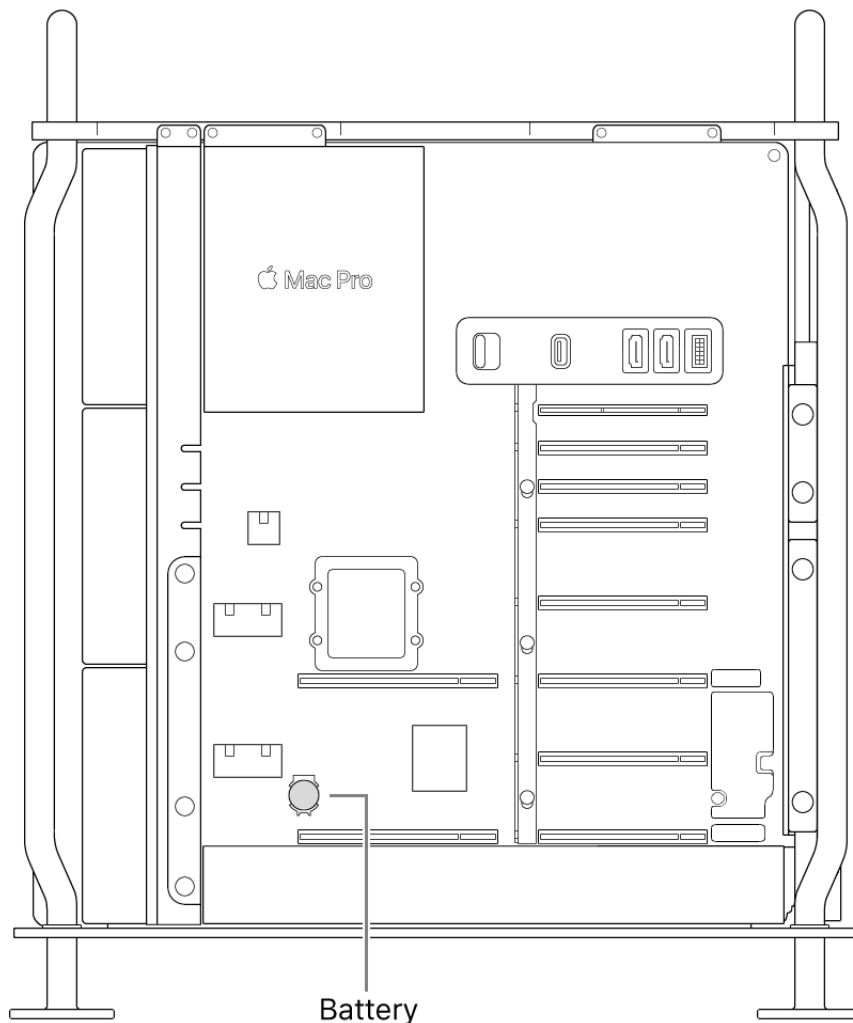
Hearing loss. Listening to sound at high volumes may damage your hearing. Background noise, as well as continued exposure to high volume levels, can make sounds seem quieter than they actually are. Use only compatible earbuds, headphones, or earpieces with your Mac Pro. Turn on the audio and check the volume before inserting anything into your ear. See [Sound and Hearing](#).

 **WARNING:** To prevent possible hearing damage, do not listen at high volume levels for long periods.

Repairing. If your Mac Pro is damaged, malfunctions, or comes in contact with liquid, you have several options for repair. Contact Apple or an Apple Authorized Service Provider for technical support and to help facilitate carry-in or on-site repairs. Under certain circumstances, it may be possible for you to complete the repair yourself with parts provided by Apple. Your Mac Pro contains several user-serviceable parts including memory, GPU modules, expansion cards, and the power supply. If a hardware failure can be verified remotely, Apple may be able to send you a part so you can complete the repair without having to take your computer to a service provider.

Coin Cell Battery. Do not ingest the battery. Chemical Burn Hazard. If the coin cell battery is swallowed, it can cause severe internal burns in just two hours and can lead to death. Keep new and used batteries away from children and pets. If the top cover cannot be replaced, stop using the computer and keep it away from children. If you think that batteries might have been swallowed or placed inside any part of anyone's body, seek immediate medical attention.

WARNING: This product contains a coin cell battery. The battery may need to be replaced during the life of the product. Replace it only with the same type (CR2032) and rating of battery, observing the correct polarity. There is a risk of fire or electric shock, if the battery is replaced by an incorrect type.



Navigation. Maps, directions, and location-based apps depend on data services. These data services are subject to change and may not be available in all areas, resulting in maps, directions, or location-based information that may be unavailable, inaccurate, or incomplete. Compare the location-based information provided to your surroundings and defer to posted signs to resolve any discrepancies. Do not use these services while

performing activities that require your full attention. Always comply with posted signs and the applicable laws and regulations in the areas where you are using navigation, and always use common sense.

Medical device interference. Mac Pro contains components and radios that emit electromagnetic fields. These electromagnetic fields may interfere with medical devices, such as pacemakers and defibrillators. Consult your physician and medical device manufacturer for information specific to your medical device and whether you need to maintain a safe distance of separation between your medical device and Mac Pro. If you suspect Mac Pro is interfering with your medical device, stop using Mac Pro.

Medical conditions. If you have a medical condition that you believe could be affected by using Mac Pro (for example, seizures, blackouts, eyestrain, or headaches), consult with your physician prior to using Mac Pro.

Repetitive motion. When you perform repetitive activities such as typing or playing games on Mac Pro, you may experience discomfort in your hands, arms, wrists, shoulders, neck, or other parts of your body. If you experience discomfort, stop using Mac Pro and consult a physician.

High-consequence activities. Mac Pro is not intended for use where the failure of the computer could lead to death, personal injury, or severe environmental damage.

Explosive and other atmospheric conditions. Using Mac Pro in any area with a potentially explosive atmosphere may be hazardous—particularly in areas where the air contains high levels of flammable chemicals, vapors, or particles such as grain, dust, or metal powders. Exposing Mac Pro to environments having high concentrations of industrial chemicals, including near evaporating liquified gasses such as helium, may damage or impair Mac Pro functionality. Obey all signs and instructions.

Important handling information for your Mac

Operating environment. Operating your Mac Pro outside these ranges may affect performance:

- *Operating temperature:* 50° to 95° F (10° to 35° C)
- *Storage temperature:* -40° to 116° F (-40° to 47° C)
- *Relative humidity:* 5% to 95% (noncondensing)
- *Operating altitude:* Tested up to 16,404 feet (0 to 5000 meters)

Do not operate your Mac Pro in areas with significant amounts of airborne dust, or smoke from cigarettes, cigars, ashtrays, stoves, or fireplaces, or near an ultrasonic humidifier using unfiltered tap water. Tiny airborne particles produced by smoking, cooking, burning, or using an ultrasonic humidifier with unfiltered water may, in rare instances, enter the ventilation openings of your Mac Pro.

Carrying your Mac Pro. Before you lift or reposition your Mac Pro, shut it down and disconnect all cables and cords. To lift your Mac Pro, hold it by the top handles; do not use the top latch. If your configured Mac Pro weighs more than 50 pounds, remove its cover to reduce the computer's weight or have someone assist you.

Using connectors and ports. Never force a connector into a port. Before you plug the power cord into the power port, make sure the power port is completely free of debris. When connecting a device to a port, make sure the port is completely free of debris, that the connector matches the port, and that you have positioned the connector correctly in relation to the port.

Important: Use only the original cables that came with your computer or accessory, or cables sold at an Apple retail store or online at apple.com

Storing your Mac Pro. If you are going to store your Mac Pro for an extended period of time, keep it in a cool location (ideally, 71° F or 22° C).

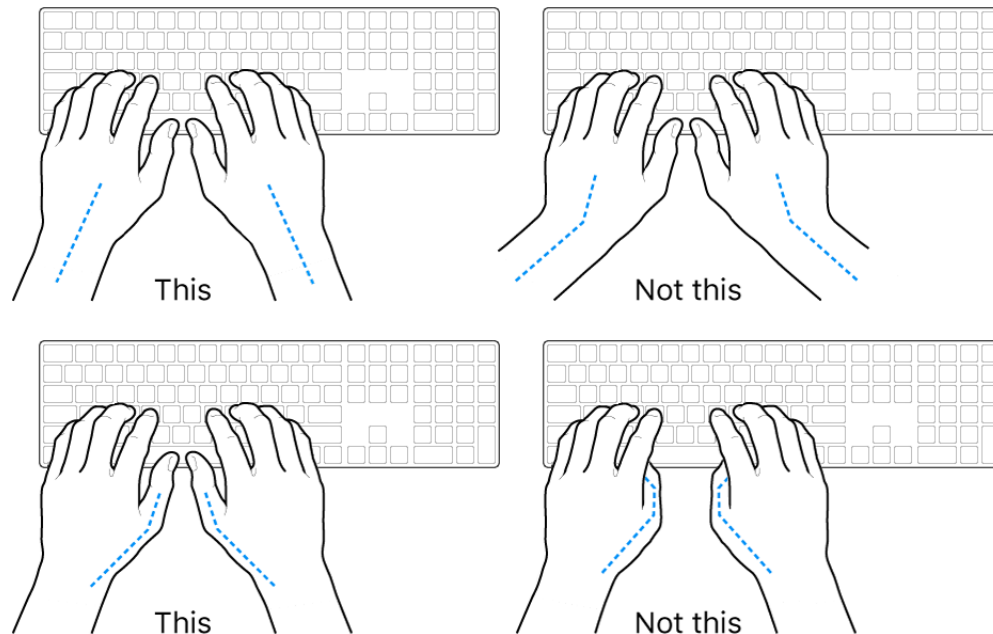
Cleaning your Mac Pro. When cleaning the outside of your Mac Pro and its components, first shut down your Mac Pro, then unplug all cords and cables. Then dampen a clean, soft, lint-free cloth to wipe the Mac Pro exterior. Avoid getting moisture in any openings. Don't spray liquid directly on the computer. Don't use alcohol, aerosol sprays, solvents, abrasives, or cleaners containing hydrogen peroxide that might damage the exterior finish.

WARNING: Don't use iKlear cleaning solution on your Mac Pro as it may damage the housing's finish.

Cleaning the Magic Keyboard with Numeric Keypad, Magic Mouse 2, or Magic Trackpad 2. Turn off the device, then unplug the cable (if necessary). To clean the outside of your mouse, keyboard, or trackpad, use a clean, soft, lint-free cloth that's been lightly moistened with water. Don't get moisture in any openings or use aerosol sprays, solvents, or abrasives.

Mac ergonomics

When you use the keyboard and mouse, your shoulders should be relaxed. Your upper arm and forearm should form an angle that is slightly greater than a right angle, with your wrist and hand in roughly a straight line.



Change hand positions often to avoid fatigue. Some computer users might develop discomfort in their hands, wrists, or arms after intensive work without breaks. If you begin to develop chronic pain or discomfort in your hands, wrists, or arms, consult a qualified health specialist.

Mouse or optional trackpad. Position the mouse or trackpad at the same height as the keyboard and within a comfortable reach.


Chair. An adjustable chair that provides firm, comfortable support is best. Adjust the height of the chair so your thighs are horizontal and your feet are flat on the floor. The back of the chair should support your lower back (lumbar region). Follow the manufacturer's instructions for adjusting the backrest to fit your body properly.

Display. Arrange the display so that the top of the screen is slightly below eye level when you're sitting at the keyboard. The best distance from your eyes to the screen is up to you, although most people seem to prefer 18 to 28 inches (45 to 70 cm).

Position the display to minimize glare and reflections from overhead lights and windows. The stand lets you set the display at the best angle for viewing, helping to reduce or eliminate glare from lighting sources you can't move.

For more information about ergonomics, see the Apple Support article [Ergonomics](#).

Regulatory information

Regulatory information, certification, and compliance marks specific to Mac Pro are available on-device. Choose Apple menu  > About This Mac > Support > Regulatory Certification.

FCC compliance statement

This device complies with part 15 of the FCC Rules. Operation is subject to the following two conditions: (1) this device may not cause harmful interference, and (2) this device must accept any interference received, including interference that may cause undesired operation.

Note: This equipment has been tested and found to comply with the limits for a Class B digital device, pursuant to part 15 of the FCC Rules. These limits are designed to provide reasonable protection against harmful interference in a residential installation. This equipment generates, uses, and can radiate radio frequency energy and, if not installed and used in accordance with the instructions, may cause harmful interference to radio communications. However, there is no guarantee that interference will not occur in a particular installation.

If this equipment does cause harmful interference to radio or television reception, which can be determined by turning the equipment off and on, the user is encouraged to try to correct the interference by one or more of the following measures:

- Reorient or relocate the receiving antenna.
- Increase the separation between the equipment and receiver.
- Connect the equipment to an outlet on a circuit different from that to which the receiver is connected.
- Consult the dealer or an experienced radio/TV technician for help.

Changes or modifications to this product not authorized by Apple could void the electromagnetic compatibility (EMC) and wireless compliance and negate your authority to operate the product.

This product has demonstrated EMC compliance under conditions that included the use of compliant peripheral devices and shielded cables between system components. It is important that you use compliant peripheral devices and shielded cables between system components to reduce the possibility of causing interference to radios, television sets, and other electronic devices.

Exposure to radio frequency energy. The radiated output power of this device meets the limits of FCC/IC radio frequency exposure limits. This device should be operated with a minimum separation distance of 20 cm (8 inches) between the equipment and a person's body.

Responsible party (contact for FCC matters only):

Apple Inc.

One Apple Park Way, MS 911-AHW

Cupertino, CA 95014

USA

www.apple.com/contact

ISED Canada compliance statement

This device complies with ISED Canada license-exempt RSS standard(s). Operation is subject to the following two conditions: (1) this device may not cause interference, and (2) this device must accept any interference, including interference that may cause undesired operation of the device.

Operation in the band 5150–5250 MHz is only for indoor use to reduce the potential for harmful interference to co-channel mobile satellite systems.

Exposure to radio frequency energy. The radiated output power of this device meets the limits of FCC/ISED radio frequency exposure limits. This device should be operated with a minimum separation distance of 20 cm (8 inches) between the equipment and a person's body.

Le présent appareil est conforme aux CNR d'ISDE Canada applicables aux appareils radio exempts de licence. L'exploitation est autorisée aux deux conditions suivantes : (1) l'appareil ne doit pas produire de brouillage, et (2) l'appareil doit accepter tout brouillage radioélectrique subi, même si le brouillage est susceptible d'en compromettre le fonctionnement.

La bande 5150–5250 MHz est réservée uniquement pour une utilisation à l'intérieur afin de réduire les risques de brouillage préjudiciable aux systèmes de satellites mobiles utilisant les mêmes canaux.

L'exposition à l'énergie radiofréquence. La puissance de sortie rayonné de cet appareil est conforme aux limites de la FCC/ISDE limites d'exposition aux fréquences radio. Cet appareil doit être utilisé avec une distance minimale de séparation de 20 cm entre l'appareil et le corps d'une personne.

EU compliance statement

Apple Inc. hereby declares that this wireless device is in compliance with Directive 2014/53/EU.

A copy of the EU Declaration of Conformity is available at [Declarations of Conformity](#). Apple's EU representative is Apple Distribution International, Hollyhill Industrial Estate, Cork, Ireland.



Use Restriction

This device is restricted to indoor use when operating in the 5150 to 5350 MHz frequency range. This restriction applies in: AT, BE, BG, CH, CY, CZ, DE, DK, EE, EL, ES, FI, FR, HR, HU, IE, IS, IT, LI, LT, LU, LV, MT, NL, NO, PL, PT, RO, SE, SI, SK, TR, UK.

Japan VCCI Class B statement

VCCI クラスB基準

この装置は、クラスB機器です。この装置は、住宅環境で使用することを目的としていますが、この装置がラジオやテレビジョン受信機に近接して使用されると、受信障害を引き起こすことがあります。取扱説明書に従って正しい取り扱いをして下さい。VCCI-B


本製品は、EMC準拠の周辺機器およびシステムコンポーネント間にシールドケーブル（イーサネットネットワークケーブルを含む）が使用されている状況で、EMCへの準拠が実証されています。ラジオ、テレビ、およびその他の電子機器への干渉が発生する可能性を低減するため、EMC準拠の周辺機器およびシステムコンポーネント間にシールドケーブルを使用することが重要です。

重要: Appleの許諾を得ることなく本製品に変更または改変を加えると、電磁両立性(EMC)および無線に準拠しなくなり、製品を操作するための許諾が取り消されるおそれがあります。

ENERGY STAR® compliance statement



As an ENERGY STAR partner, Apple has determined that standard configurations of this product meet the ENERGY STAR guidelines for energy efficiency. The ENERGY STAR program is a partnership with electronic equipment manufacturers to promote energy-efficient products. Reducing energy consumption of products saves money and helps conserve valuable resources.

Mac Pro is shipped with power management enabled with the computer set to sleep after 10 minutes of user inactivity. To wake your computer, click the mouse or press any key on the keyboard. To change this setting, click the System Preferences icon  in the Dock, then click Energy Saver.

Mac Pro meets the ENERGY STAR guidelines for energy efficiency. For more information about ENERGY STAR, go to [Energy Star](#).

Apple and the environment

At Apple, we recognize our responsibility to minimize the environmental impacts of our operations and products.

For information, go to Apple's [Environment](#) website.

Disposal and recycling information



This symbol indicates that this product and/or battery should not be disposed of with household waste. When you decide to dispose of this product and/or its battery, do so in accordance with local environmental laws and guidelines.

For information about Apple's recycling program, recycling collection points, restricted substances, and other environmental initiatives, go to Apple's [Environment](#) website.

Información sobre eliminación de residuos y reciclaje

El símbolo de arriba indica que este producto y/o su batería no debe desecharse con los residuos domésticos. Cuando decida desechar este producto y/o su batería, hágalo de conformidad con las leyes y directrices ambientales locales. Para obtener información sobre el programa de reciclaje de Apple, puntos de recolección para reciclaje, sustancias restringidas y otras iniciativas ambientales, visite www.apple.com/mx/environment o www.apple.com/la/environment.

Brasil – Informações sobre descarte e reciclagem

O símbolo acima indica que este produto e/ou sua bateria não devem ser descartados no lixo doméstico. Quando decidir descartar este produto e/ou sua bateria, faça-o de acordo com as leis e diretrizes ambientais locais. Para informações sobre substâncias de uso restrito, o programa de reciclagem da Apple, pontos de coleta e telefone de informações, visite www.apple.com/br/environment.

European Union—Disposal Information

The symbol above means that according to local laws and regulations your product and/or its battery shall be disposed of separately from household waste. When this product reaches its end of life, take it to a collection point designated by local authorities. The separate collection and recycling of your product and/or its battery at the time of disposal will help conserve natural resources and ensure that it is recycled in a manner that protects human health and the environment.

Software License Agreement

Use of Mac Pro constitutes acceptance of the Apple and third-party software license terms found at [Software License Agreements](#).

Apple Inc.

© 2019 Apple Inc. All rights reserved.

Use of the “keyboard” Apple logo (Option-Shift-K) for commercial purposes without the prior written consent of Apple may constitute trademark infringement and unfair competition in violation of federal and state laws.

Apple, the Apple logo, AirDrop, AirPlay, AirPods, AirPort, AirPort Time Capsule, AirPrint, Apple Music, Apple Pay, Apple TV, Apple Watch, Face ID, FaceTime, Finder, FireWire, Flyover, GarageBand, Handoff, iMovie, iPad, iPhone, iPod, iPod touch, iTunes, iTunes U, Keynote, Launchpad, Lightning, Mac, Mac Pro, macOS, Magic Mouse, Magic Trackpad, Mission Control, Numbers, Pages, Retina, Safari, Siri, Spaces, Spotlight, Time Machine, Touch ID, and watchOS are trademarks of Apple Inc., registered in the U.S. and other countries.

Apple Books, iPadOS, and Live Photos are trademarks of Apple Inc.

AppleCare, Apple Store, App Store, iCloud, iCloud Drive, and iTunes Store are service marks of Apple Inc., registered in the U.S. and other countries.

Apple
One Apple Park Way
Cupertino, CA 95014
USA
www.apple.com

IOS is a trademark or registered trademark of Cisco in the U.S. and other countries and is used under license.

The Bluetooth® word mark and logos are registered trademarks owned by Bluetooth SIG, Inc. and any use of such marks by Apple Inc. is under license.

Other company and product names mentioned herein may be trademarks of their respective companies.

Every effort has been made to ensure that the information in this manual is accurate. Apple is not responsible for printing or clerical errors.

Some apps are not available in all areas. App availability is subject to change.

Apple Inc.
© 2019 Apple Inc. All rights reserved.

Use of the “keyboard” Apple logo (Option-Shift-K) for commercial purposes without the prior written consent of Apple may constitute trademark infringement and unfair competition in violation of federal and state laws.

Apple, the Apple logo, AirDrop, AirPlay, AirPods, AirPort, AirPort Time Capsule, AirPrint, Apple Music, Apple Pay, Apple TV, Apple Watch, Face ID, FaceTime, Finder, FireWire, Flyover, GarageBand, Handoff, iMovie, iPad, iPhone, iPod, iPod touch, iTunes, iTunes U, Keynote, Launchpad, Lightning, Mac, Mac Pro, macOS, Magic Mouse, Magic Trackpad, Mission Control, Numbers, Pages, Retina, Safari, Siri, Spaces, Spotlight, Time Machine, Touch ID, and watchOS are trademarks of Apple Inc., registered in the U.S. and other countries.

Apple Books, iPadOS, and Live Photos are trademarks of Apple Inc.

AppleCare, Apple Store, App Store, iCloud, iCloud Drive, and iTunes Store are service marks of Apple Inc., registered in the U.S. and other countries.

Apple
One Apple Park Way
Cupertino, CA 95014
USA
www.apple.com

IOS is a trademark or registered trademark of Cisco in the U.S. and other countries and is used under license.

The Bluetooth® word mark and logos are registered trademarks owned by Bluetooth SIG, Inc. and any use of such marks by Apple Inc. is under license.

Other company and product names mentioned herein may be trademarks of their respective companies.

Every effort has been made to ensure that the information in this manual is accurate. Apple is not responsible for printing or clerical errors.

Some apps are not available in all areas. App availability is subject to change.