

Light Pipe Assembly Replacement Instructions

Follow the instructions in this sheet carefully. Failure to follow these instructions could damage your equipment and void its warranty.

Note: Online instructions covering customer-installable parts are available at <http://www.info.apple.com/installparts/>.

Tools Required

The only tools required for Version 1 of this procedure are a Phillips screwdriver and a flat-blade screwdriver. No tools are required for Version 2 of this procedure.

Opening the Server

The server slides open from the front of the rack. The top cover remains in place in the rack while the bottom housing (containing all internal components) should be placed on a sturdy, flat surface.

1. Alert users that the server will be unavailable for a period of time.
2. Shut down the server.

Warning: To avoid damaging internal components or causing injury, always shut down the server before opening it. After you shut down the server, internal components can be very hot. Let the server cool down before continuing.

3. Write down the server's serial number, which is located on the back panel. If it is necessary to set up the server's software after you replace the light pipe assembly, you will be asked for the serial number at login.

-
4. If the server is in the locked position (the yellow security LED on the front panel is on), use the Allen key that came with the server to unlock it.
 5. If the cable management arm is not in use, unplug all external cables except the power cord.
 6. Touch the server's metal case to discharge any static electricity.

Important: Always ground yourself by touching the server's case before you touch any parts or install any components inside the server. To avoid static electricity building back up in your body, do not walk around the room until you have completed your work and closed the computer.

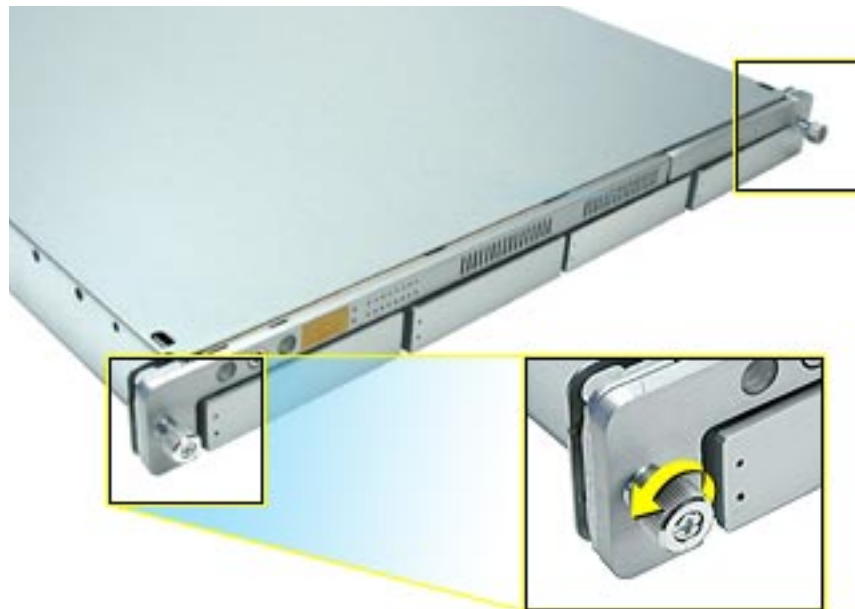
7. Unplug the power cord.

Warning: The power supply in the server is a high-voltage component and should not be opened for any reason, even when the server is off.

8. Release the two thumbscrews at the front of the server. **(Figure 1)**

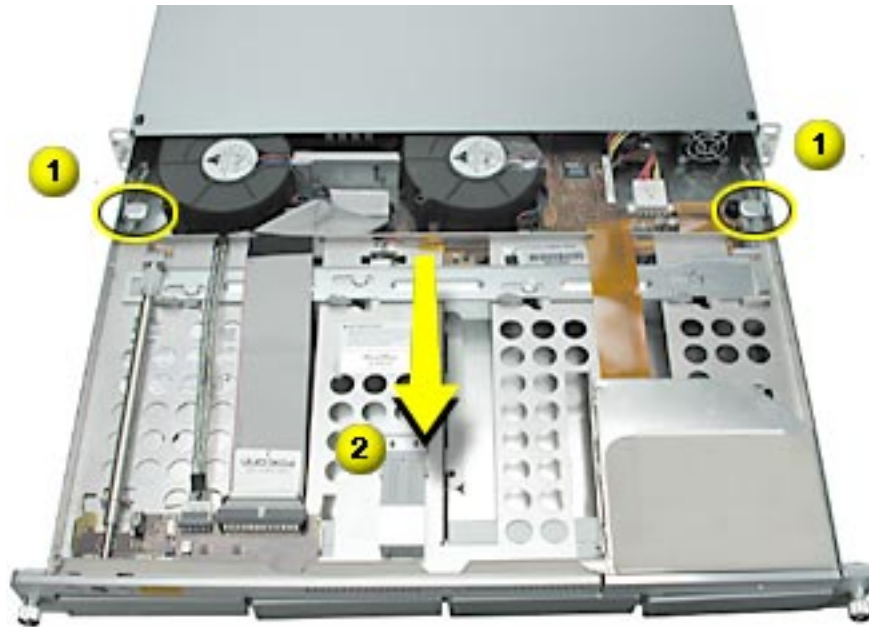
Note: The thumbscrews are captive and do not separate from the bottom housing.

Figure 1



-
9. Grasp the thumbscrews and slide the bottom housing forward part way to expose the two chassis levers. **(Figure 2)**
 10. While depressing both levers (1), pull the bottom housing all the way forward (2) and remove it from the rack.

Figure 2



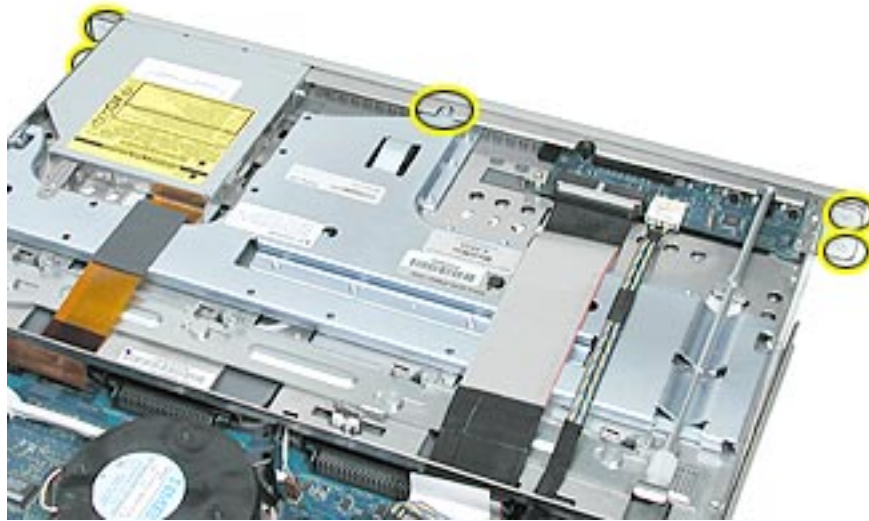
11. Place the bottom housing on a sturdy, flat surface and ESD mat.
12. Put on the ESD wrist strap.

Note: There are two versions of Xserve, each of which requires a different procedure for replacing the light pipe assembly. To identify the versions, check the server's front bezel. If the bezel includes a slot for the optical drive, follow instructions for Version 1. If there is no slot in the bezel, follow Version 2 instructions.

Removing the Installed Light Pipe Assembly, Version 1

1. Using a Phillips screwdriver, remove the screws that attach the two front bezel brackets to the server, and remove the brackets. **(Figure 3)**
2. Remove the screw that attaches the top of the bezel to the server.

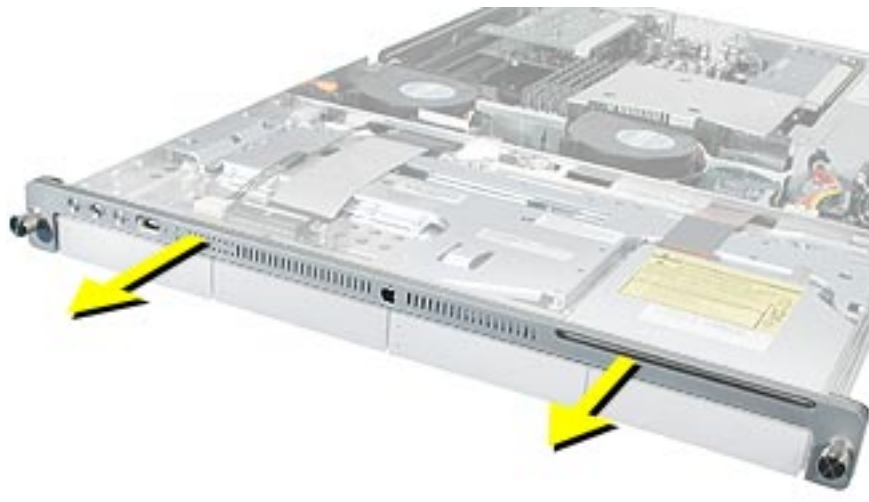
Figure 3



3. Gently pull the front bezel forward and remove it from the server. **(Figure 4)**

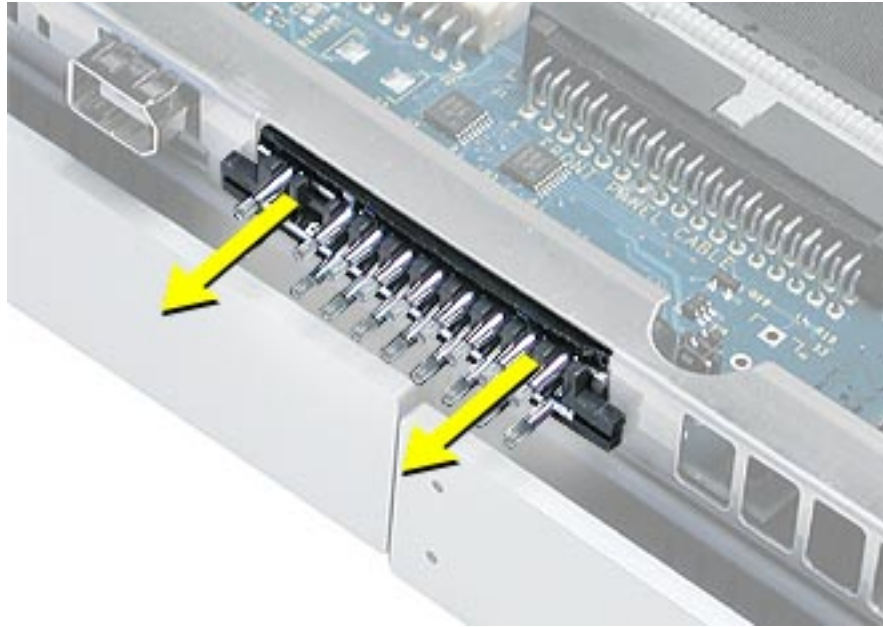
Important: When removing or replacing the bezel, be careful not to put pressure on the top of the bezel over the optical drive slot.

Figure 4



-
- Using a flat-blade screwdriver, ease first one side and then the other side of the light pipe assembly from its opening in the front of the enclosure. **(Figure 5)**
 - Remove the light pipe assembly from the server.

Figure 5



Installing the Replacement Light Pipe Assembly, Version 1

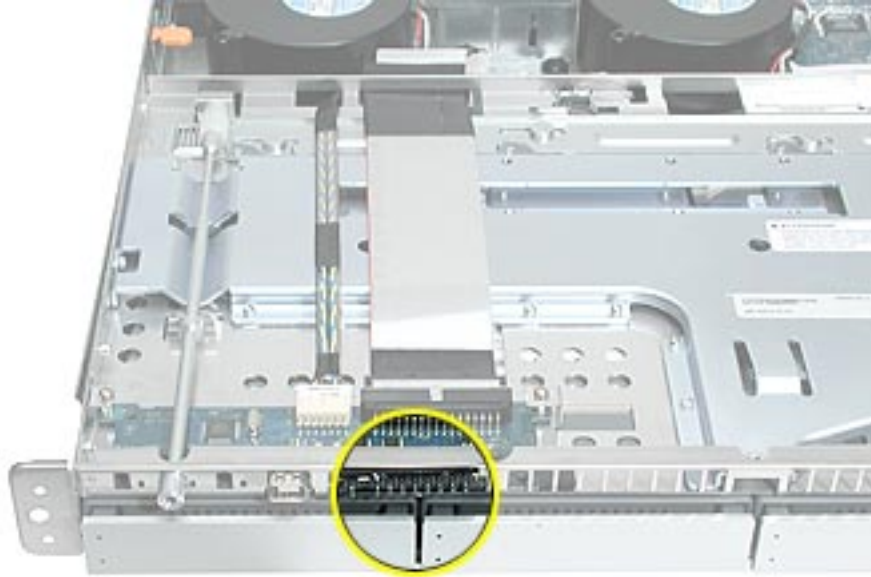
- Remove the bottom row of light pipes from the replacement assembly and insert them into the bottom row of light pipe holes in the front bezel. **(Figure 6)**

Figure 6



-
2. Insert the rest of the replacement light pipe assembly into its opening in the front of the enclosure. **(Figure 7)**

Figure 7

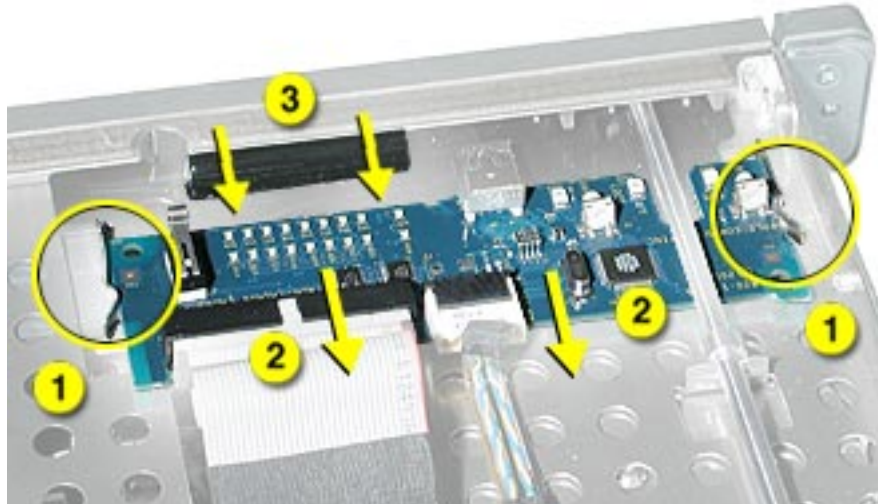


3. Replace the front bezel on the server, matching ports/projections with openings.
4. Replace the screw that secures the top of the bezel to the server.
5. Replace the two bezel brackets and their mounting screws.

Removing the Installed Light Pipe Assembly, Version 2

1. Release the two clips on the sides of the front panel board (1), and pull the board back (2) approximately 1.5 inches from the front of the server. **(Figure 8)**
2. Remove the light pipe assembly from the server (3).

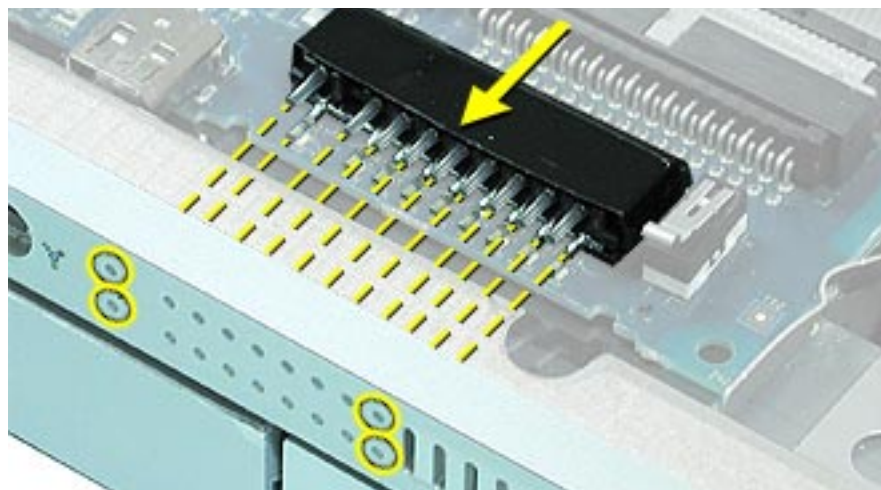
Figure 8



Installing the Replacement Light Pipe Assembly, Version 2

1. Position the replacement light pipe assembly against the inside front of the bezel, making sure the projections on the light pipes fit into the holes in the bezel. **(Figure 9)**
2. Slide the front panel board forward until it fits snugly against the assembly, and secure the two clips on the sides of the board. **Note:** You may need to lift the assembly slightly while sliding the front panel board, so that it doesn't catch the edge of the assembly.

Figure 9



Closing the Server

1. Carefully slide the bottom housing back into the rack.
2. Tighten the front thumbscrews to secure it.

Warning: Never turn on the server unless all of its internal and external parts are in place and it is closed. Operating the server when it is open or missing parts can damage it or cause injury.

 **Apple Computer, Inc.**

© 2003 Apple Computer, Inc. All rights reserved.

This document is protected under U.S. Copyright Law and International Treaties, and no part of this document may be reproduced in any form without written permission from Apple.

Apple is not responsible for typographical, printing, or inadvertent errors.

Apple Computer, Inc.
1 Infinite Loop
Cupertino, CA 95014-2084
USA
+ 1 408 996 1010
<http://www.apple.com>

Apple, the Apple logo, Mac, Macintosh, and the Mac logo are trademarks of Apple Computer, Inc., registered in the U.S. and other countries. Xserve is a trademark of Apple Computer, Inc.