

Instructions

PS12-1A POWER MODULE – INSTALLING FERRITE CLAMPS

To meet the requirements of the FCC, AWID supplies two “ferrite clamps” for installation on all PS12-1A plug-in power module. These clamps can be installed by hand, easily and quickly, at the site, without removing the reader or its wiring. This procedure may be used on a power module that was installed earlier, or on one being newly installed.

1. Locate the PS12-1A power module and its cable that connects to the LR-911 long-range reader.
2. Arrange for enough excess cable length so that the cable can loop through both clamps.
3. Hold the open clamp (Figure 1) at the cable as close to the PS12-1A as possible.
4. Loop the cable once around the channel in the ferrite. Pull the cable loop *tightly* around the ferrite clamp.
5. Press the ferrite clamp around the cable until the latch at one end of the clamp snaps over the ears on the other end of the clamp. (See Figure 2.)

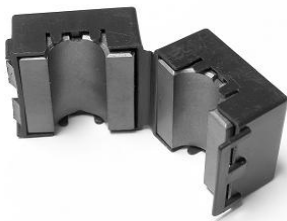


Figure 1. Ferrite clamp (open).

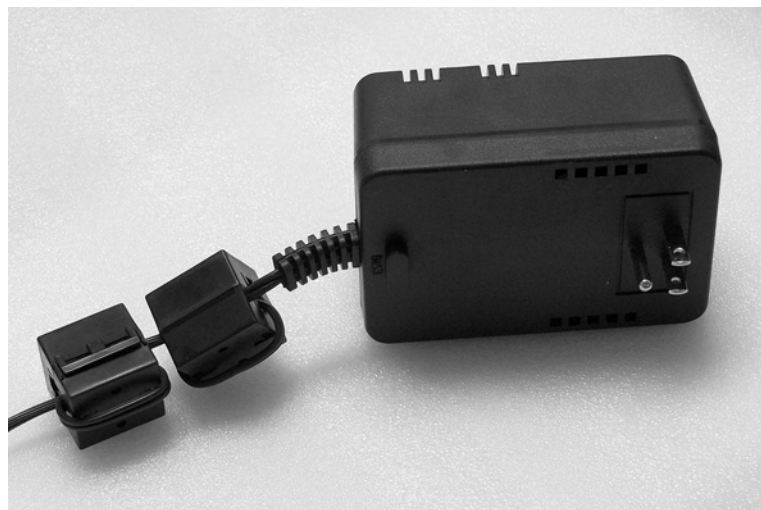


Figure 2. 2 ferrite clamps locked on cable.

Notes: If it is necessary to remove the ferrite clamp from the cable, insert a fingernail under the latch and lift it off the ears. The clamp will then swing open.

The PS12-1A is the power supply that AWID supplies in the LRIN Installation Kit for testing. The PS12-1A may also be used to power the LR-911 reader permanently. In both cases the installer must assemble the ferrite clamps to the PS12-1A's cable.