

User Manual

Contents

2. USING MEMORY CARD AS U DISK	4
3. WLAN 5	
4. BLUETOOTH.....	7
5. MAIL 9	
6. DIALLING	11
7. MESSAGING	14
8. CONTACTS	16
9. INTERNET EXPLORER.....	18
10. SOUND RECORDER.....	20
11. CLOCK 21	
12. CALCULATOR.....	22
13. CAMERA.....	23
14. GALLERY	26
15. MUSIC 27	
16. CALENDAR	28
17. FM RADIO	29
18. SETTINGS.....	30
19. NOTICES FOR THE USE OF PHONE	34

1 . APPEARANCE AND KEYPAD OPERATIONS



Keys	Functions
1 home	<ul style="list-style-type: none"> ● Press this button to return home from any application or interface. ● Press it to open recently opened application window.
2 menu	<ul style="list-style-type: none"> ● Press it to start the menu , which allows you to perform actions in the current interface or options' menu.
3 back	<ul style="list-style-type: none"> ● Press it to return to the previous interface , or to close dialog box , options' menu、 notification panel or the keypad.
4 power	<ul style="list-style-type: none"> ● Press it to open the phone's menu , then you could choose to lock the screen、 turn off the phone.
5 up	<ul style="list-style-type: none"> ● Press it to increase the volume ● Press it to turn the phone to vibration mode from the silent mode. ● Long press to enter the memo
6 down	<ul style="list-style-type: none"> ● Press it to decrease the volume. ● Long press to Camera
7 Back Camera	<ul style="list-style-type: none"> ● Entering the camera interface
8 front Camera	<ul style="list-style-type: none"> ● Entering the camera interface, switched to the front camera can photo yourself.

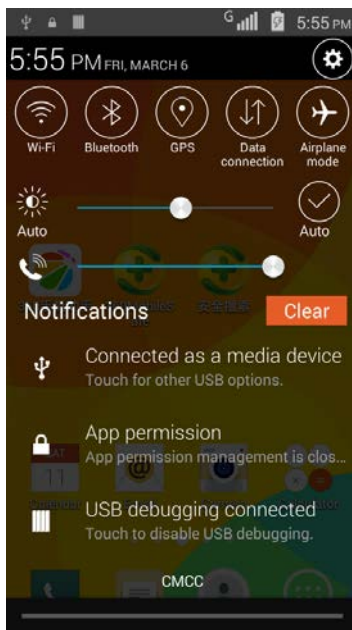
- double touch screen unlock, default off

2. Using Memory Card as U Disk

If you want to send music, pictures or other files to the phone's memory card from the computer, you should set memory card as u disk first.

Set memory card as u disk

- 1) Connect the phone to the computer with USB cable. The notification icon will appear in the status box.
- 2) Use USB mobile transmission line will connected to the computer
- 3) In the notification panel, touch USB is connected, then touch "Open the USB Storage Device"



4) After the connection can be directly in the PC check images captured on camera.

- Notice: different PC operating system to how to operate to normal use the U disk.
 - 1) WIN7 Can directly use
 - 2) XP update windows media player to 11
 - 3) Install wpdmtp.inf driver
 - 4) Vista Unconfirmed
- Notice :On the PC operation assistant tool such as mobile phone, Must be open the USB debugging.

3. WLAN

Wi-Fi provides as far as 300feet (100M) range of wireless network access. If you use cell phone to connect wifi, you should connect to the wireless access point or 「hot spots」 .

- Notices : The availability and coverage of Wi-Fi signal depend on the number, infrastructure and other objects penetrated by the signal.

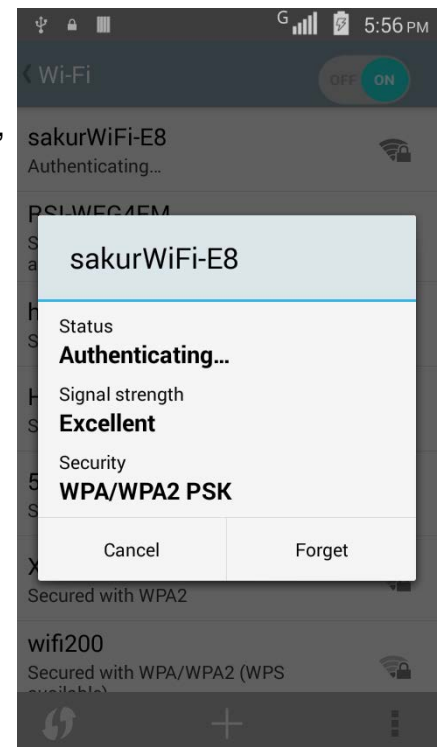
Open Wi-fi and to connect to the wireless network

- 1) Press home>menu , then touch settings>wifi and internet
- 2) Select the wi-fi box , to open Wi-Fi. Phone will automatically scan for available wireless networks.
- 3) Touch Wi-Fi settings. Then a list of Wi-Fi network will show the founded network name and security settings. (open network or WEP、WPA/WPA2 with password).If you enable the notification in Wi-Fi settings, The status box will show this icon (📶) when open available wireless network founded.
- 4) Touch one of the Wi-Fi choices to connect the network. When you choose open network, phone will connect to it automatically. If you choose WEP、WPA/WPA2 with password, you should type the password first, then touch to connect it.

- Notices : when the phone is connected to the wireless network,

The status box will show this Wi-Fi icon, and the approximate signal strengthen (the number of lit bars).If touch the connected network , will display the name of Wi—Fi network, status, speed, signal, strength, security, information and IP address.

If you want to delete the wireless settings, please touch “not reserve” as in the right picture. If you want to connect to this network, you should re-enter these settings.



- Notices :

Unless you choose not to reserve the network with password, otherwise, there is no need to re-enter the corresponding password when next time connecting to the previously encrypted wireless network. Wi-Fi will search automatically, that is, phone needn't to perform additional steps to connect Wi-Fi networks.

- Connect to other Wi-Fi networks
 - 1) In the interface of wireless and network, touch Wi-Fi settings. The founded Wi-Fi networks will show on the Wi-Fi network list.
 - 2) Touch other Wi-Fi networks, and then you can connect to this network.
- Notices : in addition, you can surf the internet via GPRS. We default that the GPRS in SIM1 is opened after started, users can select manually ,the specific location is “settings>wireless and internet>data connection” ,touch “SIM1、SIM2、no data connection” , when the dot turns green, it's already opened.

4. Bluetooth

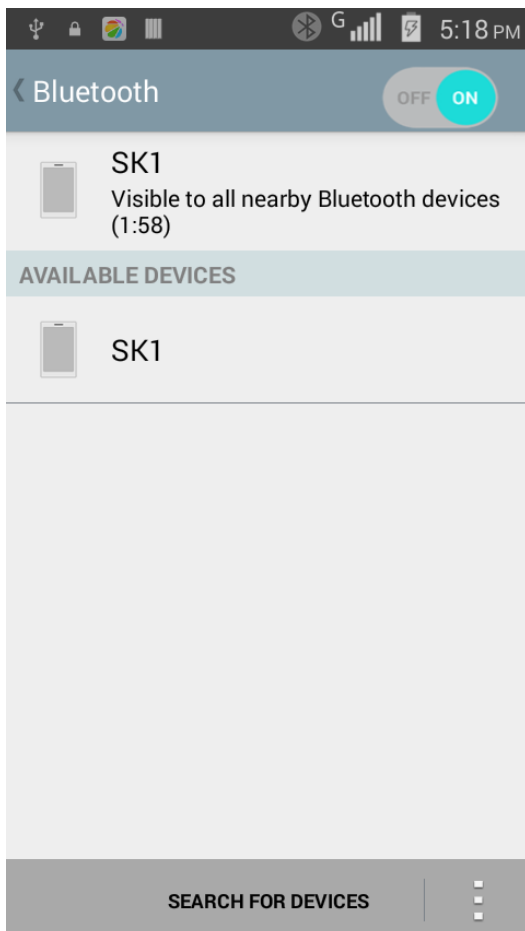
Turn on Bluetooth or set the phone can be detected

- 1) Press home>menu, the touch settings.
- 2) Touch wireless and internet, then choose Bluetooth box to open the Bluetooth function. After started, the status box will show this icon (). Touch “scan for devices”the it starts to scan for all devices within range.
- 3) Touch Bluetooth settings, all the devices founded will display in the list under the icon.

(select the box “can be detected”, set it to be detected, the other Bluetooth devices will be able to find the phone.)

important : the maximum detecting time of the phone is 2 minutes.

- Pairing and connection of Bluetooth headset
 - 1) Press home>menu, then touch settings.
 - 2) Touch wireless and internet>Bluetooth settings, then select Bluetooth box, then your phone will scan for the Bluetooth devices within range ,and show the founded devices in the list under the icon.
- Tips :
 - a. If the list can't find your equipment, touch scanning equipment to re-scan it.
 - b. Make sure that the devices wanted are under the detected mode.
- Notices : generally Bluetooth devices need password to be paired, often use 「0000」 as the default password.4)The pairing and connecting status will show under the headset in the Bluetooth devices list. When the headset connected to your phone, the status box will show this iconmeans connected. Then you can use the headset to make or receive callings.



- Cut the connection to the Bluetooth
 - 1) Press home>menu>settings>wireless and internet>Bluetooth settings.
 - 2) In the list of Bluetooth equipment, touch or tap and hold the connected hand-free headset.
 - 3) Press and select “cancel the pairing”.

- Bluetooth proximity sensor

After pairing the two device,you can test out the signal is strong or weak by the Bluetooth proximity sensor device

5.Mail

5.1 Gmail

- Create an electronic mail account

Select mail> settings. You can activate or edit existing e-mail accounts as well as create a new e-mail account.

a. Select mail, Google account setting interface appears. Then touch 'next step'> create account>enter name , last name and e-mail account.

b. Google servers determine whether the name can be used, if so, new interface appears prompting enter password, then judge the password' security, users who doesn't meet the requirements need to re-enter the password.

c. Successfully register a new Gmail account, a messenger created automatically for testing.

- Loading mail account

a. Open Gmail skip introduction screen>loading interface appears >select load

b. Enter name, password then load

E-mail account initialization ,prompting "login successful" All Google accounts will be synchronized.

- Creating and sending ,mails

When creating mails, select mail > creating mails. Enter the address(recipient), theme and contents. Press MENU you could 'append', 'Add Cc/Bcc', select send or discarded.

- Receive mails

There is tone for new mails, in the status box will show Gmail button , Press Menu >'refresh' , refresh and update the number of the unread mails in a proper way.

- Delete mails

When loading a mail account , if you want to delete it , you need to restore factory settings .

When loading a second one , you could press the menu button to delete it.

Notices : many functions depend on Gmail Account , for example : Electronic Market、 Google Talk、 Sync Contact and Calendar.

5.2 Email

- Load Email.

- a. Open network connection ,

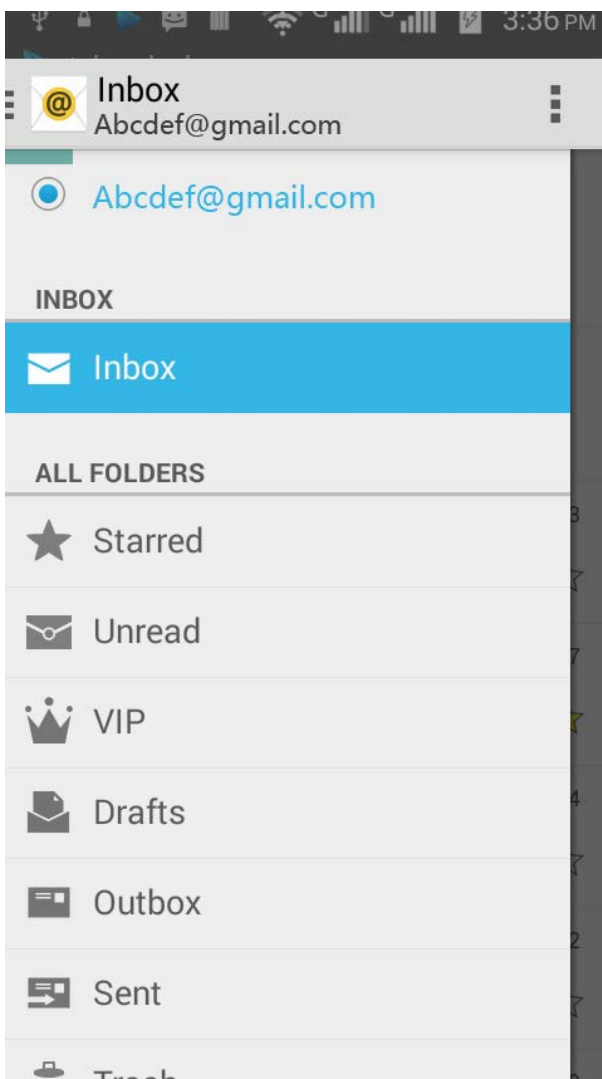
- b . In setting the account interface, input the correct email address and password and click next mobile phone automatically complete the sending and receiving server Settings. Pop-up mail find frequency, and user Settings interface, complete Settings, click next.

- c. For account creation name, the editor of the law that email user name, and click next. Complete set, synchronous mailbox.

- Create and send Email

When creating mails, select mails > create mails. Enter the address(recipient), theme and contents. Press MENU you could 'append', 'Add Cc/Bcc', select send or discarded or save as draft.

- Check the Email files



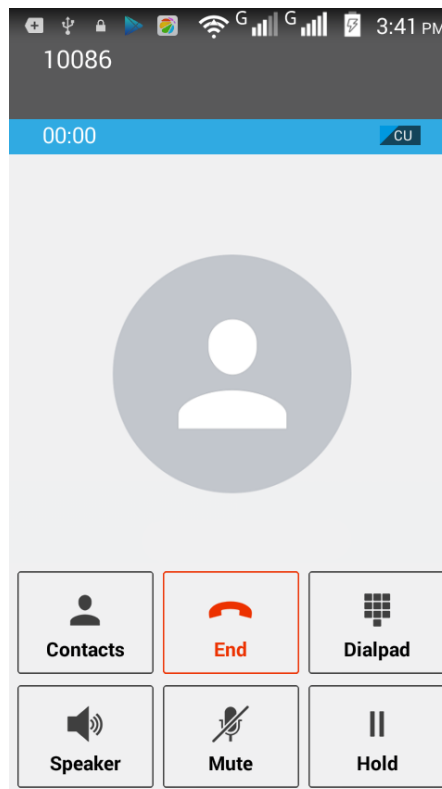
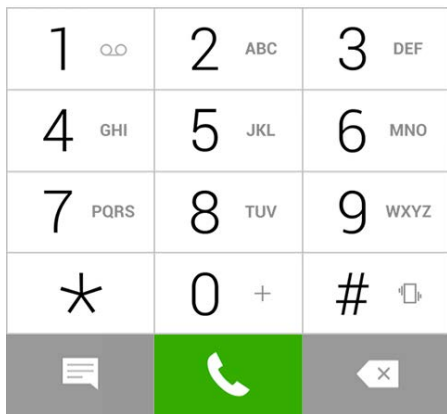
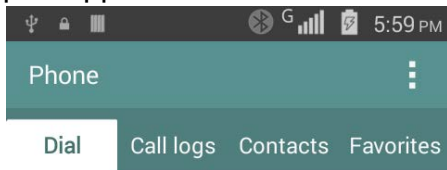
Click on the bottom folder options, list all folder options

6. Dialling

When the icon of internet server appears in the screen, you could dial or receive callings. The signal bar on the top right corner show the strength of network signal (the maximum with 4 signal bars) .

- Start dialling

Open application's main menu>dial. You could choose SIM to do the dialling.



- Dialling

At the dialling Keyboard , enter the phone number , and then click the dialling key , after that,you should choose one SIM card or internet call. If needed to call the extension,you could click the “dial pad” in the bottom of the screen to open the interface or press menu key to select “delay 2 seconds” , and then enter the number of the extension.

- Telephone calls in the call log

Every telephone number called and received in SIM will reserved in phone's menu of call log. On the top left of every call record will show SIM

All numbers in the call log can be dialed by clicking the button "dial" on the right side of the screen.

When number list appearing , click it to catch details ; press it for long you could dial via SIM , meanwhile you can edit, delete, save the number or do other operations.

- Receive callings

When calling comes (top left will show from which SIM card) press“Answer”and slide towards right until the middle button, then you can receive callings.

- Proximity sensor

According to the distance between phone and human body , it will adjust automatically the switch of the backlight.

During the call, close the phone to the ear, the backlight will turn off automatically , which could save batteries and prevent inadvertently touching.

- Refuse to answer the phone

a. When standby, calling comes , press “refuse”button and slide towards left side until the middle button, then you could refuse the calling.

b. When using,calling comes,click on the “refuse”button to refuse the calling.

- Two-way call/multiparty call(conference call)

- Notices : this function needs that SIM card open multiparty call features.

1) Already exist a call in the phone

2) Click“Add calls” , dial another call (or receive another call , phone default open “call waiting” (settings–dialing settings–other dialing settings) , after both connected , could view the status of calling.

3) select“combine call”– you can combine two calls into one way.

4) after multiparty call connected , you could separate the calls or hang up one of them via“the small arrow of conference call”.

- Telephone recording

During the call , more>start record , you could record the dialog of the call.

1) settings>set other functions of the call in the dialing settings , for example : Call Transfer– after all the settings finished and turned on , you could transfer the call to a certain number.

2)In settings>dialing settings >other dialing settings , open “call waiting”.After turned on , you can receive another call when already exist one , The answering and rejecting functions are just like the ordinary phone.

- Call settings

Voice Call

- 1) Voice Mail: The voice mailbox in setting in the input voicemail number.
- 2) IP prefix number : Setting the different of SIM cards IP prefix numbers
- 3) Call forwarding : Can set respectively a SIM card, the line is busy, and no one has to receive, not be connect four connecting way
- 4) Call barring : Can set respectively to the SIM card call restrictions
- 5) Additional Settings : a. My phone number b. Call waiting.

Internet call

- 1) Account
- 2) Use Internet calling

Other Settings

- 1) Fixed Dialing Numbers
- 2) Minute Reminder : Turn on minute reminder at 50s of every minute.
- 3) Quick Response : Can edit the text messages rejected by the information when content.

7. Messaging

- Important : the message title of this phone is the phone number , will be reserved in s similar for of dialog , instead of the usual folder structure. Messages with blue background are those received, and messages with white background are those sent.
- Send SMS to certain phone number

1) Press home>messaging , touch“new messages”.

2) In the interface of “edit” :

a . Click “recipient”box to start input method , you can also click“enter”box to start input method , in that way you can enter characters.

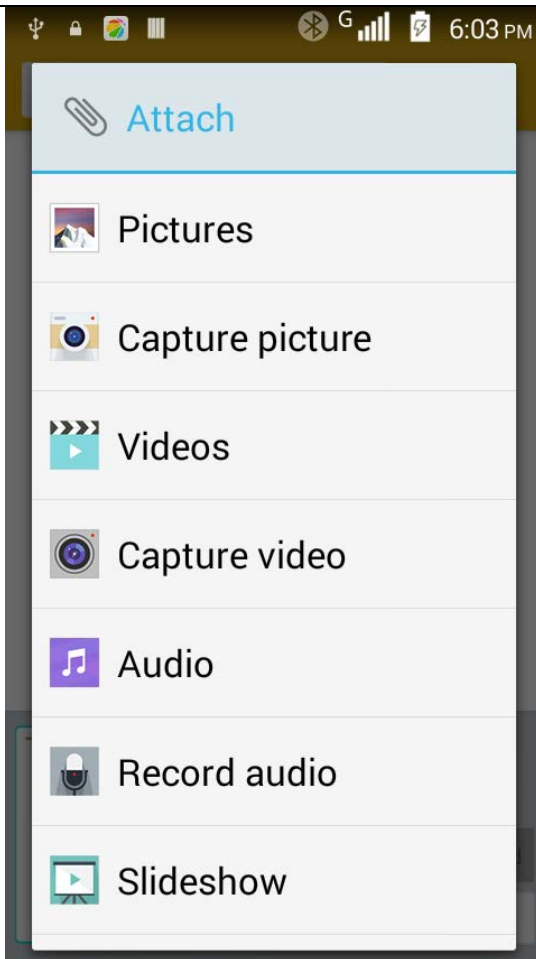
b . Click the button of send from SiM to start sending.

- Send MMS to certain phone number

When creating message , it was defaulted as SMS , it will be turned to MMS when following operations were done. You can send MMS via clicking “send” after editing.

1) In the interface of “edit” , Click the button of “+key” :

2) Click “append” , you can spend the following attachments , then it will be turned to MMS automatically.



Notices:

- a, If you want send MMS with many pages, you should select “append PPT” in the “append” interface.
- b, You can append 10 pictures, with the form of GIF, JPEG.
- c, Click “adding themes”, the box of “theme” will appear under the box of “recipient”, meanwhile it is turned to MMS automatically.

- Send messages to multiple numbers

Enter multiple numbers in the box of entering , each number is divided by the comma in English.

Click on the right side of the head with the receiver plus icon, can choose contact group in the address book

- Notices : For now this phone can mass messages to almost 20 numbers , the correct number depends on the characters , you can only enter 312 characters in the box of“recipient”.

When a message is sent or sent again , a little yellow letter will appear. The number 1 or 2 on the letter refers to SIM.

When message sending failed , a red triangle with exclamation will appear.

when editing information other functions of Menu button

8. Contacts

- Open the menu of applications>contacts

1) Default display phone contacts and SIM card contacts, sort contacts by first letter of alphabet.

2) Click Search Icons , You can enter the contact search interface.

a.To enter the Numbers or letters and the list of names of the agreement, which will be shown in the search results.

b.If it were not so search to match of the contact, interface will appear 'not find any contact.

3) Click“Add Contact”Icons,Can create New Contacts

Select save contacts to phone or a a SIM card, into contact editing interface.

You can edit contact head, name, telephone number, group, save to and more, and then click "finish".

4) In contact interface, click on the Menu button

a. Menu >Delete contacts

Can “All”Icons checked, click the delete button, delete all the contact person, including cell phone and SIM card of contact.

Can separate check one or more contacts, click the delete, delete the selected all contacts.

b. Menu> To display of the contact

You can choose all contact, one a SIM card of contact, the mobile phone contacts

c. Choose from the definition, but also on a SIM card and cell phone choice whether or not to show that all the lone contacts.

d. Menu >Import/export

In the mobile phone can local, SIM card and SD card three parties achieve contact information of the copy each other.

First choose the "copy source" and then select the next step, selecting copy contact to, can complete the contact's copy.

e. Menu >Share visible contacts

All contacts can be imported into the SD card, or through bluetooth, email, text message or MMS share

- Open the application interface >Contact , change to the group.

1) Click“Add group”Icons can create new group , Just to be saved in a cell phone group

2) In "the group name" column input group name, in "type in the contact's name" column input contact key word, can be in all of contact search, and added to the group. Finally click "finish".

3) In a group, click on the Menu button, Menu functions

a. Menu>Update

You can modify the group name, delete or add group of contacts

b. Menu >Delete

You can delete the group, and will not delete the contact itself.

c. Menu >Send messaging by group.

Automatic new information, and the group added to contact the address bar recipients

d. Menu >Send Email by group

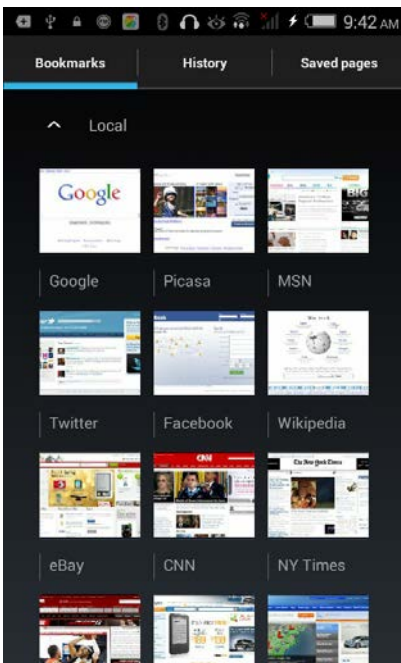
If contact group have the same email address, the automatic new mail, and E-mail address in the address bar add to the receiver

9. Internet Explorer

Internet explorer

- 1) In the interface of internet explorer , touch address filed and enter the URL.
- 2) Use keypad to enter URL. The appropriate web sites will appear on the screen. You can touch it directly go to the page or continue to enter URL.
 - Homepage

Select “homepage” , you could load in the set homepage. If you do not set it, you will use the vendor’s pre-set sites.



- Functions of menu
 - 1) Menu>Backward

After browsing through multiple pages, will return to the previous page the current page.
 - 2) Menu>Forward

After browsing through multiple pages, will move to a web page after the current page.
 - 3) Menu>Windows

You can view all open windows to the current.
 - 4) Menu>Bookmarks
 - a. Click the “Bookmarks” to make the current URL as a bookmark saved.
 - b. Click the bookmark under the bookmarks list, will open the URL.
 - 5) Menu>More
 - a. Add bookmarks, save the current URL as bookmark.
 - b. Find on page, search what you need in current page.
 - c. Select text, in the text, click and drag to select a piece of text.
 - d. Page info, display page address and other information of the current browsing.
 - e. Share page, select the Bluetooth or SMS to share the current page.

- f. Downloads, show all the content downloaded.
- g. History, Show your browsing history, and view the most visited pages of information.
- h. Setting, contains a variety of browser settings.

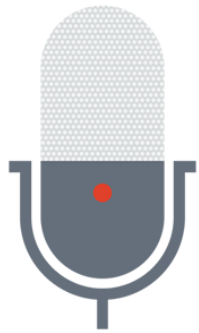
10. Sound Recorder

Recorder can record voice, and send it quickly via Bluetooth or MMS as well as make it as ring tone.

- Notices : recorder can only save the audio files as AMR format.

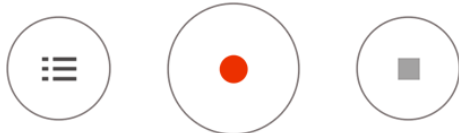
- 1) Click the recorder application.
- 2) Keep the phone's microphone near the voice source.
- 3) Click recorder to record voices ,and click to stop or Recordinglist.

All recordings save in my recording folder in the default music program.



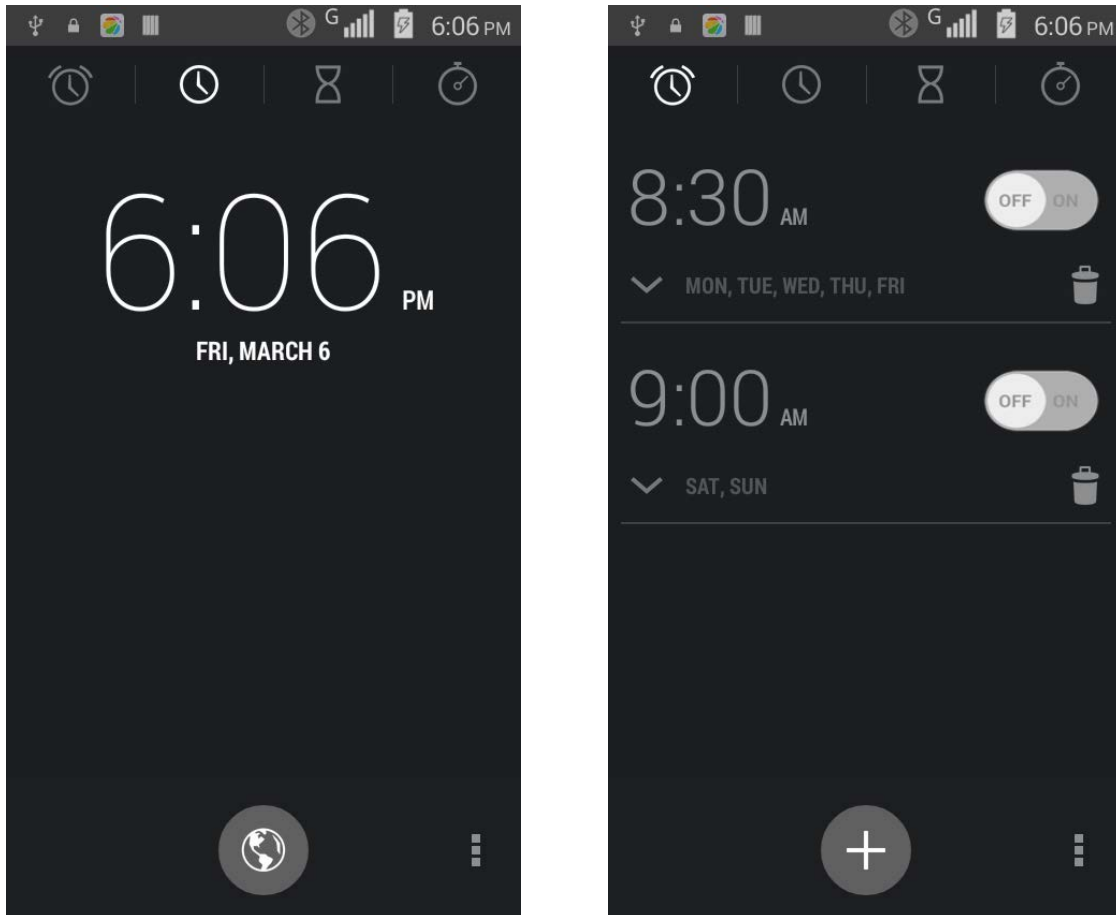
Voice1

00:00:00



11.Clock

- 1) Open the menu of application, click clock
- 2) Click screen except the alarm at any position, screens, black, time with white shows, this time the standby time to screen will not extinguish screen. Click again on the screen, and restore normal clock interface.
- 3) Click screen set alarm button and enter the alarm clock set interface



- Alarm

After functions set , phone will arrives in the setting time to alert you by ringing or vibrating to achieve it's function. Press Menu to add alarm , you can also add it from the adding interface. You could set the alarm according to your needs. In the interface of alarm will show three closed alarms (two alarm clocks are Monday to Friday 8:30,9:00) .

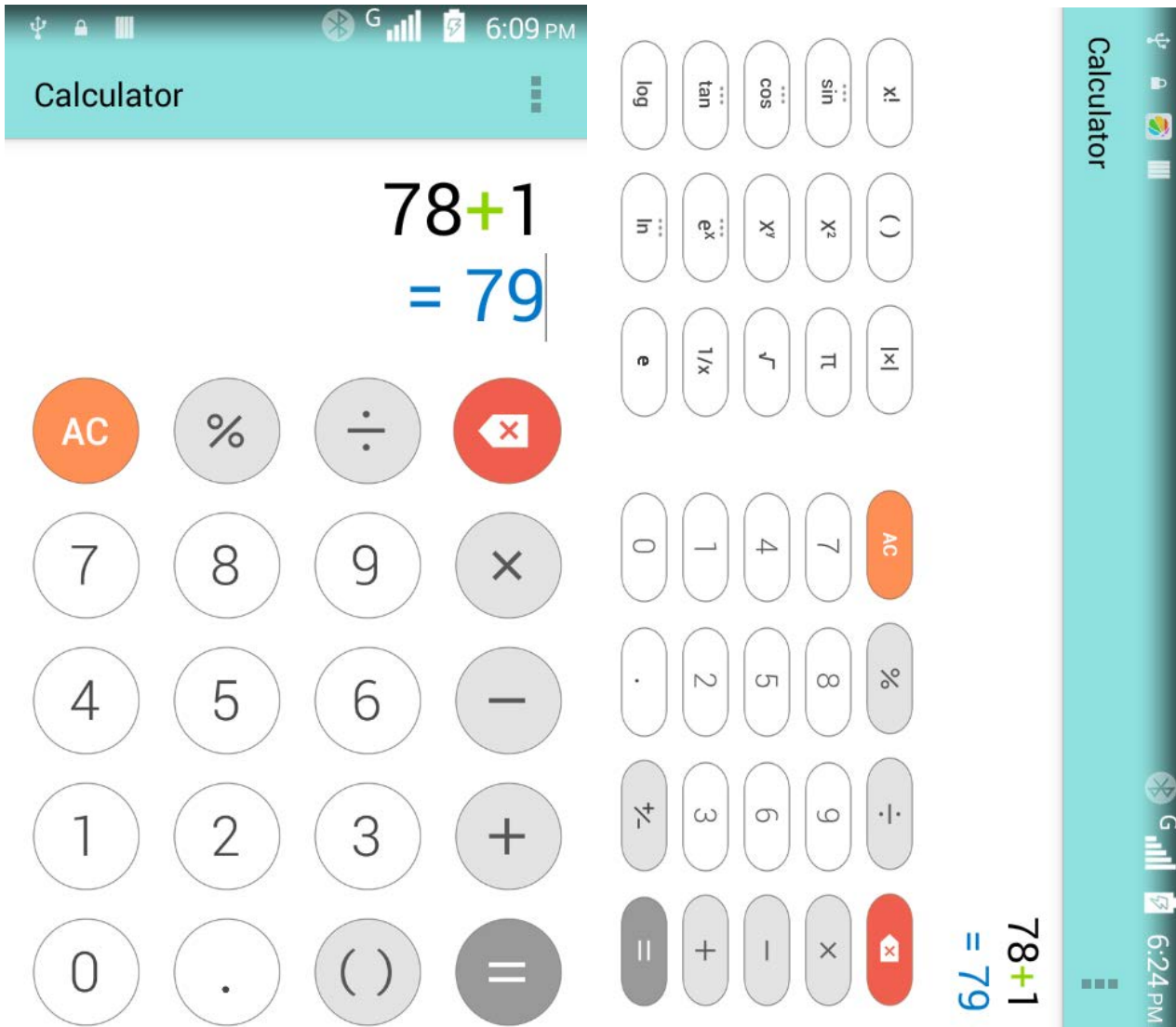
You can edit the current alarm , you could edit time、ringing tones、vibration、repeat form and tabs.

12. Calculator

calculator

this function can turn your phone into calculator , it can do some simple calculations.

- Touch the number keys to make it appear in the blank box.
- In the interface of calculator, press menu button, then the senior panel appears.
- Mobile phone screen rotation direction in the calculator interface can switch out the senior panel



13.Camera

13.1 camera

- Prior preparation

Install memory card before using the camera or video camera. All your photos or videos taken by the phone are stored in memory card.

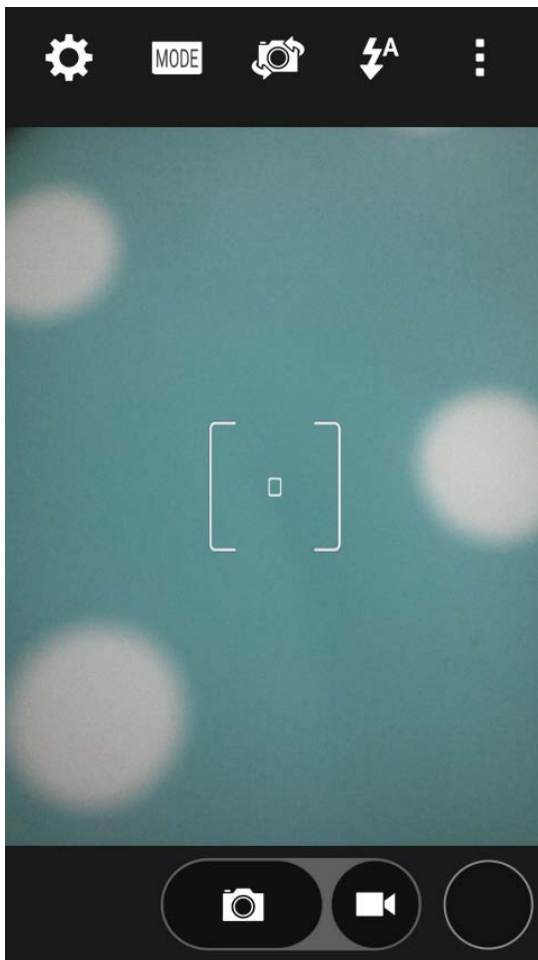
- Open camera

Press home, touch menu, select camera. Take pictures

- 1) Touch the “shutter” button on the screen.
- 2) After taking , photos will save to the camera’s galley folder with the name of taking time.
- 3) You can view the photos by touching the preview box button.
- 4) Camera settings

You can touch the button of “setting Menu” in the interface of camera to do the settings Under camera viewfinder mode, press Menu , you can switch to video or photos’ gallery.

On the bot left of camera viewfinder mode, display the preview of the previous picture. Touch preview box, the photo display on full screen and you can enlarge it to view details.



- Shared Settings of Camera and Video camera

1) Flash mode : Auto、 On、 off.

2) White balance : Auto、 Incandescent、 Daylight、 Fluorescent、 Cloudy、 Twilight、 Shade、 Warm fluorescent.

3) Color effect : None、 Mono、 Sepia、 Negative、 Aqua、 Blackboard、 Whiteboard.

4) Scene mode , Auto、 Night、 Sunset、 Party 、 Portrait、 Landscape、 Night portrait、 Theatre、 Beach、 Snow、 Steady Photo、 Fireworks、 Sport、 Candle light.

5) other settings : store location , exposure , image properties , anti-flicker

- Camera Settings

1) Capture mode : normal、 HDR、 Face beauty、 Panorama

2) self timer : off , 2seconds , 10seconds

3) continuous shot : 40 shots , 99 shots

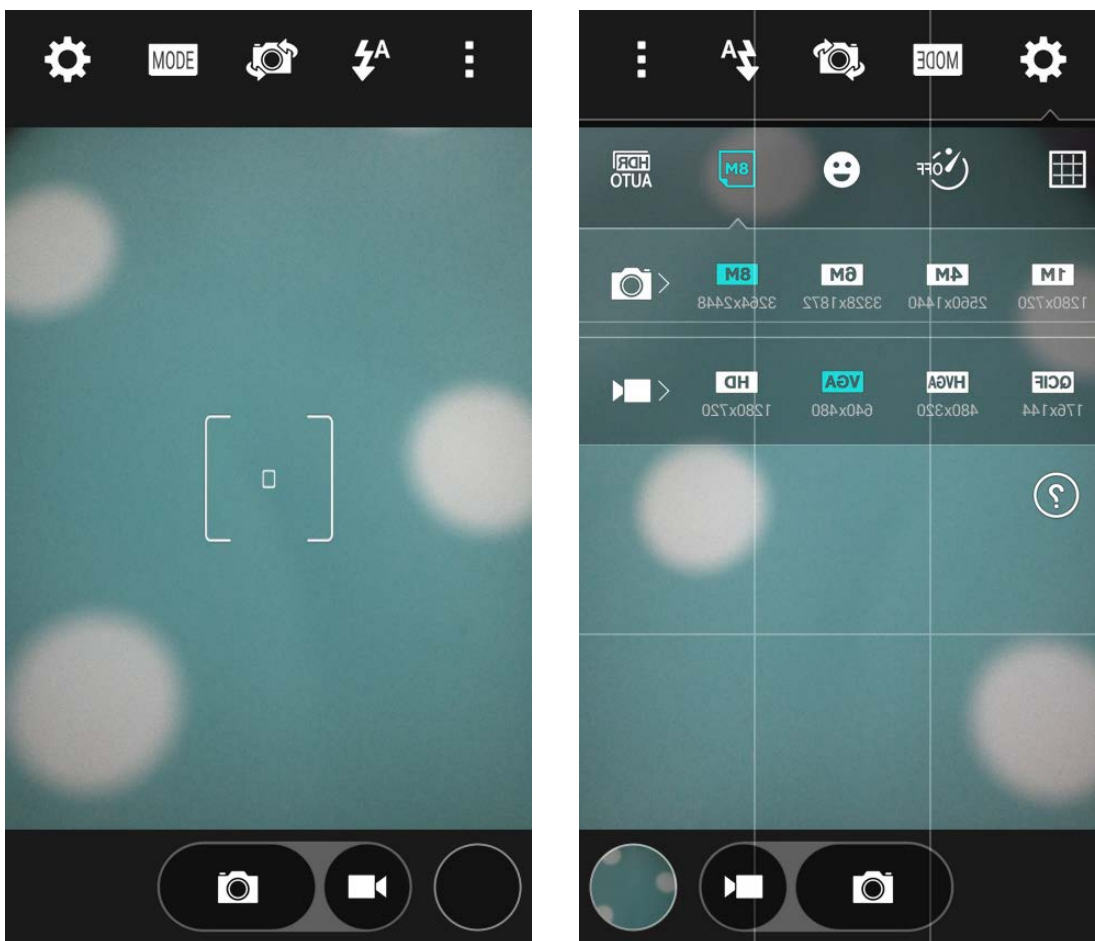
4) picture size : QVGA , VGA , 1M pixels , 1.3M pixels , 2M pixels , 3M pixels , 5M pixels

13.2 Video camera

- Prior preparation

Install memory card before using the camera or video camera. All your photos or videos taken by the phone are stored in memory card.

- Take video



1) Aim your object with the screen.

- 2) Touch the “shutter” button on the screen.
- 3) After taking , photos will save to the camera’s galley folder with the name of taking time.
- 4) You can view the videos by touching the preview box button.
- 5) Video camera settings

You can touch the button of “set” in the interface of camera to do the settings

Under camera viewfinder mode, press Menu , you can switch to video or photos’ gallery.

On the top right of camera viewfinder mode, display the preview of the previous video. Touch preview box, the video will display on full screen and you can touch the play button to view it.

- Shared Settings of Camera and Video camera

- 1) Flash mode : Auto、 On、 off.

- 2) White balance : Auto、 Incandescent、 Daylight、 Fluorescent、 Cloudy、 Twilight、 Shade、 Warm fluorescent.

- 3) Color effect : None、 Mono、 Sepia、 Negative、 Aqua、 Blackboard、 Whiteboard.

- 4) Scene mode , Auto、 Night、 Sunset、 Party 、 Portrait、 Landscape、 Night portrait、 Theatre、 Beach、 Snow、 Steady Photo、 Fireworks、 Sport、 Candle light.

- Videos settings

- 1) Microphone : off , on

- 2) audio mode : meeting , normal

- 3) time lapse interval : off , 1s , 1.5s , 2s , 2.5s , 3s , 5s , 10s

- 4) video quality : low , medium , high , fine

14. Gallery

- Open images

Press home , touch label of applications , then touch photos' galley.

In the interface of camera , Press menu to open it , then touch to operate.

1) Files Interface

- In the library the interface, upper right a slide show the play button, click on the way to the slide circulation play all image files.
- Click on the images, enter the picture to see interface.
- Choose a long press image files, pop-up corresponding operation.

2) Use images

After taking pictures, you can view them and share them with your friends.

- Use E-mail to send pictures : choose Gmail or E-mail, pictures will be automatically added to an E-mail. Write your information, click send.
- Use Messaging to send pictures : Select the information, pictures will be additional to the MMS. Write your information, click send.
- Use Bluetooth : Bluetooth list, select already pairing of bluetooth equipment, through bluetooth send a picture.

3) check pictures

In the photo view interface, on the screen or so slip, can forward or backward view photosEdit picture.

- Edit light : Fill Light Highlights Shadows Auto-Fix.
- Edit image effects : Cross-process Posterize Lomo Documentary and so on.
- Color Effects : Warmth Saturation B &W Sepia Negative Tint Duo-tone Doodle.
- Crop:Crop Red Eye Straighten Rotate Flip Sharpen.

4) Crop pictures:

- If you want to adjust the size of the clip, please hold the edge of the cutting tools. The arrow appears clip, from the trim your fingers inside or outside the center to drag, can adjust its size.
- If you want to adjust the big hours in the clip that keep proportion, please hold down any of the four corners of the one.
- If you move to the clip of the picture area of the other, please hold cutting is internal, then move to drag the fingers to the position.

- View images

1) In the picture interface, touch photo album to view images.

2) Touch the thumbnail to view pictures on full screen.

You can choose to display small or large thumbnails. Hold down the screen towards the left side to view the next photo or towards right to view the previous one.

In the photo album or list, press and hold down the picture towards left to view the next picture, or towards right to view the previous one.

15. Music

The phone can play digital audio files in memory card. The following formats are available :AMR、 M4A、 MIDI、 MP3、 WAV、 OGG.

- Open Music

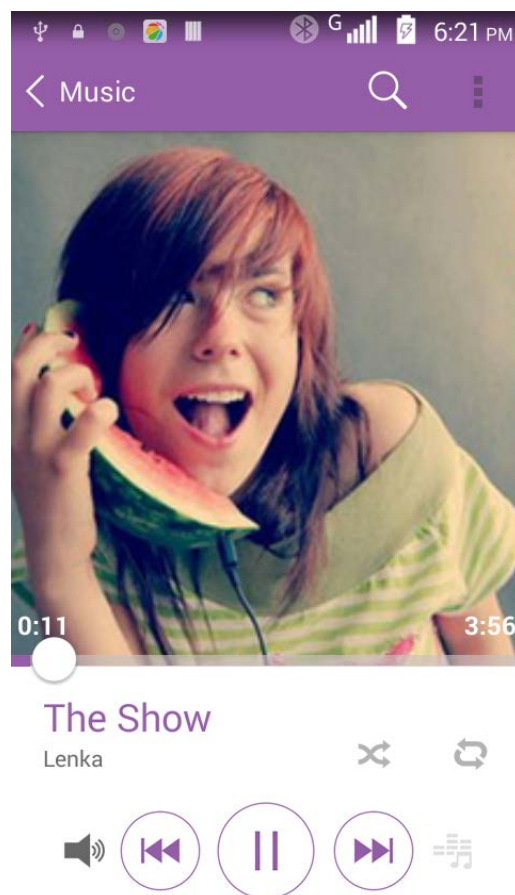
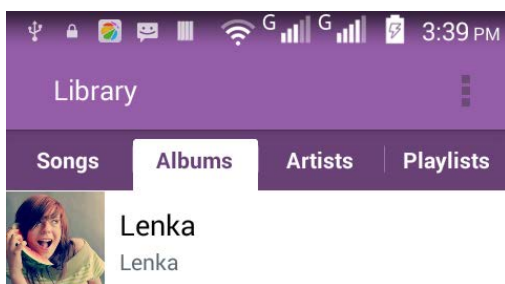
Press home, touch the label of applications, touch music. Then the interface of Music Media appears.

- Music Media

Your music files are classified according to the following four categories : Artists, albums, songs and play lists. Touch one of these categories; you can view the list inside.

Continue the operations, until your wanted music appears. Such as , if you choose Artists a list of artists sorted by the numbers in English will appear. Choose any on to open the list , then all the albums and songs will appear. Select one album, then the songs in it will be played.

- Tips: You can play all of the songs in the interface of music media, in random sequence . Press Menu, and then touch the Party Shuffle. Then will start playing the first song randomly selected . To close the Party Shuffle, press Menu, then touch to turn off the Party Shuffle.



16. Calendar

Enter the calendar application

Load Goggles accounts, enter the application, In the interface of month or week will use gray to highlight the day. Display default the date on the current month.

In the interface , press menu , 4 display modes will appear :

1) Schedule Interface shows a certain schedule(click on the initial time and view forward,click the final time to view backwards)

2) day Interface displays a day's schedule (last clicked date),Slide around to turn page accoring day.

3) week Interface displays a week's schedule (last clicked date),Slide around to turn page accoring week.

4) today Interface displays a day's schedule, In the interface of month or week use gray to highlight the day.

5) month nterface displays a month's schedule (last clicked date) Slide around to turn page accoring month.

- New activities

1) Press menu, more < touch new activities.

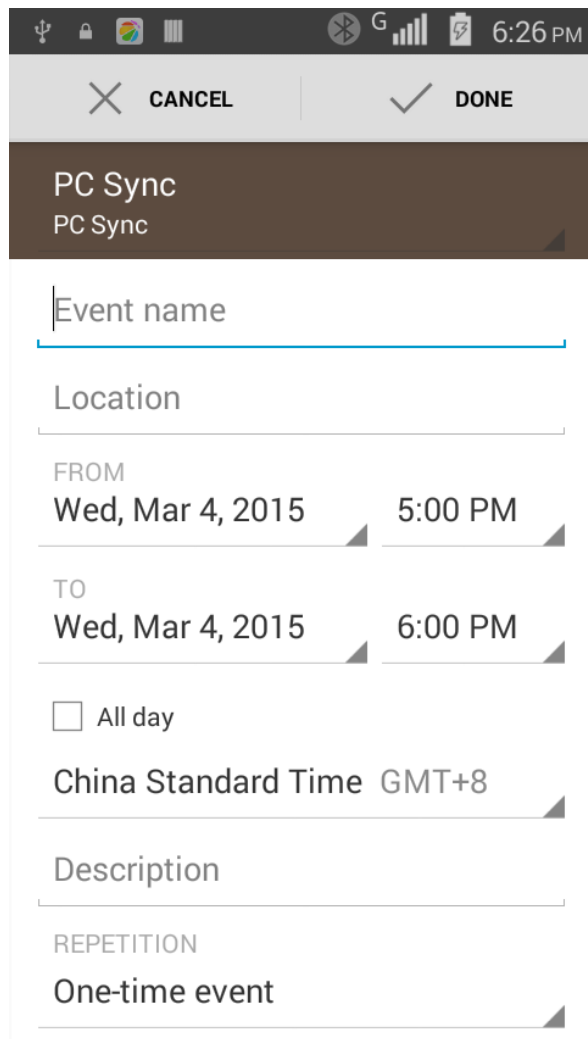
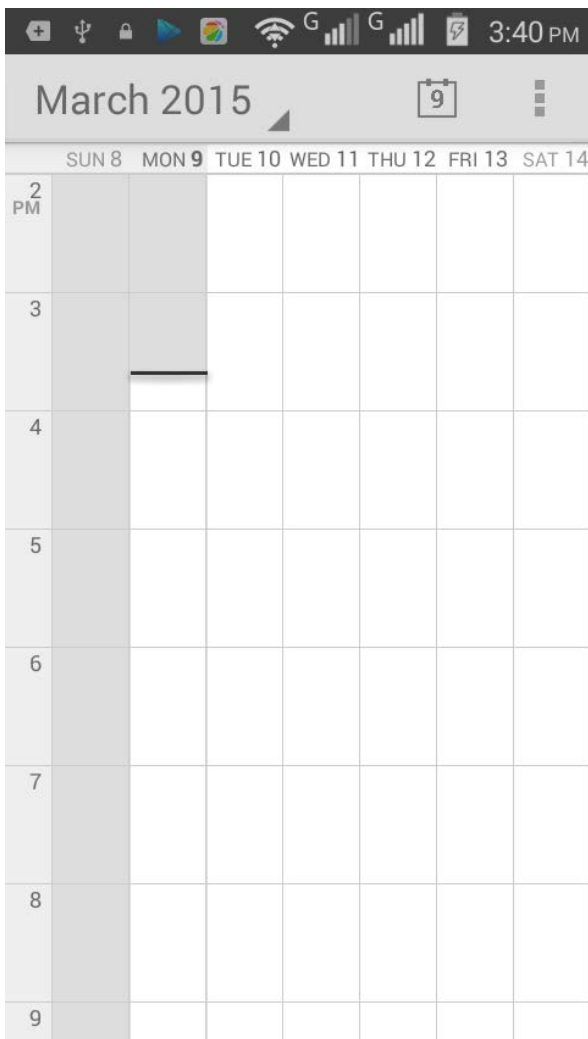
2) Enter the name of activity in the activities' box.

Notices : Such as special occasions such as birthday or a day with events, set the all-day

option to Yes. If the activity is at a certain time period, select the start time and end time.

3)Enter the event location, description, guests, repeat, remind time.

4) Click finish to return to calendar.



17.FM Radio

FM Radio

Through this program, you may listen to FM radio on the device, FM radio use the wired headset as an antenna to receive signals, before opening this program ,you can install the original equipment-headphones, when listening, you can switch it manually to speakers or the mode with wired headphones.

- Open FM radio

Touch "FM radio" to open the application of FM radio.

- 1) Click on the "search", automatic scanning search FM channel, and channel in list interface, list all channels
- 2) Click "FM recording", listening to the radio to the current can be recorded. The tape recording to default file name can be arbitrary well-preserved input filename. Save to FM recording the default file.
- 3) Click "exit" closed FM radio, cannot listen to in the background.
- 4) Must be insert cable headphones as antenna, but click on the horn button, can put the FM radio.
- 5) Click on the frequency of the rear of the five-pointed star icon, channel was added to the collection channel list.



- Listen to FM radio background

Click to return to key, the radio program moved to the background, right now you can still continue to listen to the show, and can also carry out any other program.

18.Settings

Your service provider may default some device settings, so you may not be able to change these settings.

- **Wireless and Networks**

1. WLAN

1) WLAN and WLAN settings: Touch WLAN to open. Open WLAN ,it can search for available networks automatically , networks without password can be used directly, others need to enter the password first.

Notice :Open WLAN then the flight mode ,WLAN will close automatically ;Open flight mode then connect WLAN , it can be used normally.

2. Bluetooth

Bluetooth switch and setting up the touch bluetooth open, will automatically be search nearby bluetooth open the equipment.

3. Data usage

1)Data usage: set up mobile data traffic limit, flow more than limit will be close mobile data services.

4. Location

1) High accuracy: Use GPS,Wifi and mobile networks to determine location.

Touch it to open or close

2) Battery saving: Use wifi and mobile networks to determine location.

Touch it to open or close

3) Device only: Use GPS to determine your location.

Touch it to open or close

5. More...

a. Airplane mode: Touch to open or close.

b. Default SMS app

c. Tethering&portable hotspot

d. VPN

e. Mobile networks

f. USB Internet

- **Sound&Display**

1. Audio profiles

This option gives the phone tones' settings under the status of receiving calls or notification. Including :Vibration, volume, ring tones, ring tones notification and feedback(Button operation tone, select Sound, screen lock tone, touch) .To adapt every environment.

1) Select "Sound / Silent / Vibrate only , Touch the spot on the right, when turns green ,it opens.

2) Volume : Including the ring volume and alarm clock settings, you can manually slide to select.

2. Displays

- a. Brightness Adjust the brightness:
- b. Auto rotating screen: Rotate phone to change direction
- c. Font size: choose font size: small,normal,large or extra large
- d. Sleep: Adjust the delay before the screen automatically locks

3. LED indicator

LED light up with you have missed calls,messages,or application events.

• Personalization

1. Security

- 1) Set up screen locks : Use slide,face unlock,pattern,PIN or password to lock the screen.
 - a. Touch“face unlock”, the first time there will be a simple unlock instructions and examples, click “next step” to continue the step“make the face image”。
 - b. Touch PIN Enter PIN numbers to unlock the screen.
 - c. Touch password Set password to unlock the screen.
 - d. Touch “no” Stop this application.

- 2) Set up SIM card lock Enter (4-8numbers) PIN to set the lock of SIM.

SIM card PIN (Personal Identification Number) is to prevent unauthorized use of SIM cards.PIN code provided with SIM. The service provider gives the initial value.

Change a blocked PIN code, you need to open the "SIM Lock ", then go to Change Password screen, the phone will automatically prompt enter the old PIN code and asked to enter a new PIN code twice,finally the phone will prompt that change the code successfully. If you enter the PIN with error for three times, SIM card PIN codes will be automatically locked, PUK codes is usually supplied with SIM card. If no, you should go to the service provider for the codes.

If you enter 10 times wrong PUK code, the SIM card will be permanently locked.

- 3) Password visible Password visible when enter it
- 4) Select device administration Add or delete device manager.
- 5) Use security credentials Allow application visit security credentials or other credentials.
- 6) Install from SD card Install the encrypted certificate from SD card.
- 7) set password Set or change Certificate store password
- 8) clear storage Clear all the contents of the certificate store and reset their passwords.

2. SIM management

- 1) Touch it to choose or to disable the SIM card, the card is grey when disabled, the flight mode displays on status bar.
- 2) The default SIM card ,you can choose Voice call,Video call,Messaging,Data connection

3. wallpaper

You can choose the album, wallpapers or video wallpaper set as the default wallpaper

4. Accessibility

- 1) Large text
- 2) Power button ends call: According to the "power" button to end the call to open, call, press the "power" will end the call and not shut down the screen

- 3) Auto-rotate screen
- 4) Speak passwords
- 5) Touch & hold delay
- 6) Install web scripts
- 7) Quick boot

- **Input and control**

1. **Languages and input**

- 1) Selecting Language: Include all the languages on the phone.
- 2) Personal Dictionary : Add words to custom dictionary or delete.
- 3) Keyboard Settings: Vibrating when buttons are pressed, Playing sound when buttons are pressed, Capitalizing automatically, Speech Input(by microphone on the keyboard), Inputting words(speech can be altered by sliding finger on space key), Displaying tips(activate predictive function when you input words); Auto-Text(Automatically input certain words when press space key or specified keys)
- 4)Input method: you can select Android keyboard or google pinyin input method

- **AIR Gesture**

1. **Air browse:**

- 1) Move between pages
- 2) Mute incoming calls and pause playing sounds when screen on

2. **Air call-accept :** Ware your hand over the screen to accept incoming call.

3. **Smart screen:** When your eyes have been detected,the screen will scroll according to the angle at which you tilt your head or the devices.

4. **Quick gesture entry:** Quick entry the application with gestures while the phone in the deep sleep mode.

- **My account**

1. Add account
2. Backup and Restore

- 1)Backup my data will application data, WLAN password and other Settings backup to Google's servers
- 2) Resetting to Factory Settings, Clear all data stored on the phone.

- **Device manager**

- 1.Date and Time

- 1) Automation: Use date and time provided by Network.
- 2) Setting Date: Touch "+" and "-" to set date.
- 3) Selecting Time Zone: Select Time Zone according to where you are.
For China please select "GMT+08:00, China Standard Time".
- 4) Setting Time: Touch "+" and "-" to set time.
- 5) Use 24 Hour Time Format: ON/OFF
- 6) Select Date Format: There are six kinds of formats you can choose from:
Regional(12/31/2015) is default setting
12/31/2015, 31/12/2015, 2015/12/31,
Tue,Dec 31,2015; Tue, 31 Dec, 2015; 2015 Dec 31,Thu

2. Storage

- a. Can view the SD card and cell phone memory usage.

- b. Can you mount SD card or Erase SD card.
- c. Can choose the default memory.

3. Battery

Boot time that use and each module to use power in general

4. Developer options

- a. USB Debugging: USB debugging only for development and USB disk.
- b. Stay awake: Screen will never sleep while charging.
- c. Allow mock locations
- d. Desktop backup password
- e. Strict mode enabled
- f. Pointer location
- g. Show touches
- h. Show screen updates
- i. Show CPU usage
- j. Force GPU rendering
- k. Window animation scale:
- l. Transition animation scale
- m. Don't keep activities
- n. Background process limit
- o. Show all APRs

5. About phone

You can check the information on status bar and remaining power.

19. Notices for the use of phone

Your phone is a product of superior design and craftsmanship and should be treated with care. The following suggestions can help you comply with the terms of repair kits, to extend the life of mobile phone.

- 1) Place the mobile phone and their parts and components out of reach of small children.
- 1) Keep the phone dry, rain, humidity and all types of liquids which contain minerals will corrode electronic circuits.
- 2) Don't touch the phone with wet hands when charging, it will cause electric shock or damage the phone.
- 3) Avoid place the device in high temperature environment. Temperatures will shorten the life of electronic devices, damage batteries, and warp or melt certain plastics.
- 4) Avoid place the device in too low temperature environment. When the temperature rises, the phone will produce water vapor that may damage electronic circuit.
- 5) Avoid place the phone in dusty, dirty places, otherwise parts may be damaged.
- 6) To avoid the phone in a lit cigarette, near open flame or any heat source.
- 7) Do not open the device, non-professional approach will do damage to the phone.
- 8) Do not throw it from height, knock or shake the phone, rough handling can damage internal circuit boards.
- 9) Do not paint the phone, because the paint will block headphones, microphones or other removable parts, and lead it not work.
- 10) Use clean, soft, dry cloth to clean the camera, light sensor lenses. Prohibit the use of harmful chemicals and cleaning agents, cleaning fluids to clean the phone
- 11) If mobile phone, battery, charger, or mobile phone accessories are defective, send to the nearest qualified service center for inspection.
- 12) If necessary, Service Centre staff will assist you and will arrange for phone repairs.

FCC Statement

1. This device complies with Part 15 of the FCC Rules. Operation is subject to the following two conditions:

(1) This device may not cause harmful interference.

(2) This device must accept any interference received, including interference that may cause undesired operation.

2. Changes or modifications not expressly approved by the party responsible for compliance could void the user's authority to operate the equipment.

NOTE:

This equipment has been tested and found to comply with the limits for a Class B digital device, pursuant to Part 15 of the FCC Rules. These limits are designed to provide reasonable protection against harmful interference in a residential installation.

This equipment generates uses and can radiate radio frequency energy and, if not installed and used in accordance with the instructions, may cause harmful interference to radio communications. However, there is no guarantee that interference will not occur in a particular installation. If this equipment does cause harmful interference to radio or television reception, which can be determined by turning the equipment off and on, the user is encouraged to try to correct the interference by one or more of the following measures:

Reorient or relocate the receiving antenna.

Increase the separation between the equipment and receiver.

Connect the equipment into an outlet on a circuit different from that to which the receiver is connected.

Consult the dealer or an experienced radio/TV technician for help.

SAR Information Statement

Your wireless phone is a radio transmitter and receiver. It is designed and manufactured not to exceed the emission limits for exposure to radiofrequency (RF) energy set by the Federal Communications Commission of the U.S. Government. These limits are part of comprehensive guidelines and establish permitted levels of RF energy for the general population. The guidelines are based on standards that were developed by independent scientific organizations through periodic and thorough evaluation of scientific studies. The standards include a substantial safety margin designed to assure the safety of all persons, regardless of age and health. The exposure standard for wireless mobile phones employs a unit of measurement known as the Specific Absorption Rate, or SAR. The SAR limit set by the FCC is 1.6 W/kg. * Tests for SAR are conducted with the phone transmitting at its highest certified power level in all tested frequency bands. Although the SAR is determined at the highest certified power level, the actual SAR level of the phone while operating can be well below the maximum value. This is because the phone is designed to operate at multiple power levels so as to use only the power required to reach the network. In general, the closer you are to a wireless base station antenna, the lower the power output. Before a phone model is available for sale to the public, it must be tested and certified to the FCC that it does not exceed the limit established by the government adopted requirement for safe exposure. The tests are performed in positions and locations (e.g., at the ear and worn on the body) as required by the FCC for each model. The highest SAR value for this model phone when tested for use at the ear is **1.002W/Kg** and when worn on the body, as described in this user guide, is **0.778W/Kg**(Body-worn measurements differ among phone models, depending upon available accessories and FCC requirements). The maximum scaled SAR in hotspot mode is **0.778W/Kg**. While there may be differences between the SAR levels of various phones and at various positions, they all meet the government requirement for safe exposure. The FCC has granted an Equipment Authorization for this model phone with all reported SAR levels evaluated as in compliance with the FCC RFexposure guidelines. SAR information on this model phone is on file with the FCC and can be found under the Display Grant section of <http://www.fcc.gov/oet/fccid> after searching on FCC ID:**2AGE2-EK4** Additional information on Specific Absorption Rates (SAR) can be found on the Cellular Telecommunications Industry Association (CTIA) web-site at <http://www.wow-com.com>. * In the United States and Canada, the SAR limit for mobile phones used by the public is 1.6 watts/kg (W/kg) averaged over one gram of tissue. The standard incorporates a substantial margin of safety to give additional protection for the public and to account for any variations in measurements.

Body-worn Operation

This device was tested for typical body-worn operations. To comply with RF exposure requirements, a minimum separation distance of **10mm** must be maintained between the user's body and the handset, including the antenna. Third-party belt-clips, holsters, and similar accessories used by this device should not contain any metallic components. Body-worn accessories that do not meet these requirements may not comply with RF exposure requirements and should be avoided. Use only the supplied or an approved antenna.