

ARAD CENTRON ELECTRICITY METER

INSTALLATION INSTRUCTIONS



FIELD PROGRAMABLE PARAMETERS		DEFAULT PARAMETERS	
USER CODE	5 DIGITS	USER CODE	0
TRANSMISSION INTERVAL	5 DIGITS	TRANSMISSION INTERVAL	11 second
TRANSMISSION	OFF/ON	TRANSMISSION	ON

FCC ID	VIDCENTRON
--------	------------

The user and the installer should be aware that changes and modifications to the equipment not expressly approved by Master Meter could void warranty and the user's authority to operate the equipment. Professionally trained personnel should install the equipment.

NOTE: The antenna used for this transmitter must be installed to normally provide minimum separation distance of at least 20 cm from all persons and must not be co-located or operating in conjunction with any other antenna or transmitter

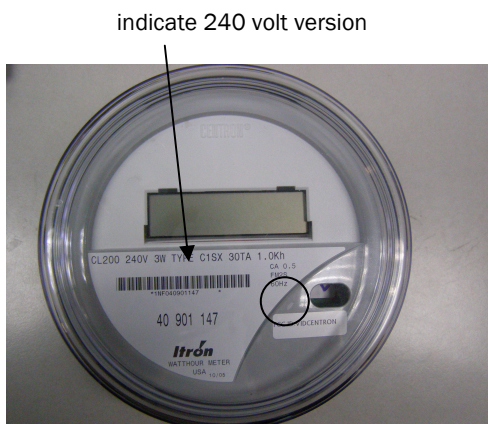
For optimum performance

- Meter should be installed upright (parallel to the wall) and not on an angle.
- Meter should be located at open space or in close box with windows, not in close metal box.

WARNING

Sensitive Electronics Inside

HANDLE CAREFULLY



ATTENTION:

The digital portion of the transceiver has been tested and found to comply with the limits for a Class B digital device, pursuant to part 15 of the FCC Rules. These limits are designed to provide reasonable protection against harmful interference in a residential installation. This equipment generates uses and can radiate radio frequency energy and, if not installed and used in accordance with the instructions, may cause harmful interference to radio communications. However, there is no guarantee that interference will not occur in a particular installation. If this equipment does cause harmful interference to radio or television reception, which can be determined by turning the equipment off and on, the user is encouraged to try to correct the interference by one or more of the following measures:

- 1.) Reorient or relocate the receiving antenna.
- 2.) Increase the separation between the equipment and receiver.
- 3.) Connect the equipment into an outlet on a circuit different from that to which the receiver is connected.
- 4.) Consult the dealer or an experienced radio/TV technician for help.

Note: The device (or CENTRON) transmission duty cycle is limited by its design not to exceed 0.12%.

This device complies with Part 15 of FCC Rules. Operation is subject to the following two conditions:

- (1) This device may not cause harmful interference, and (2) this device must accept any interference received, including interference that may cause undesired

