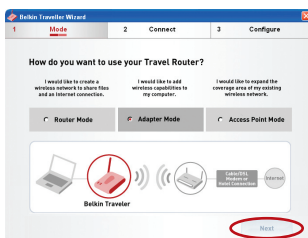


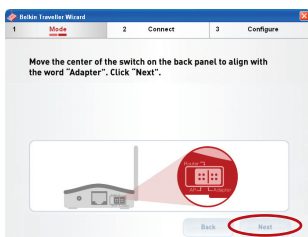
# Connecting and Configuring your Router

## Adapter Mode Installation

### 1. Mode | Selecting Adapter Mode

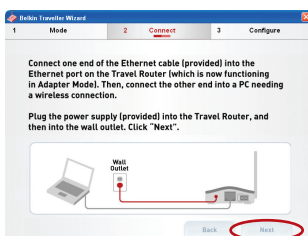


- 1.1 Select “Adapter Mode”, then click “Next”.



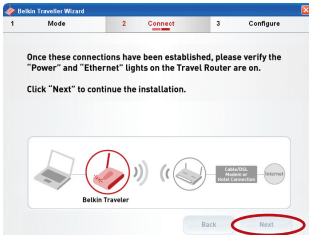
- 1.2 Move the center of the switch on the back panel to align with the word “Adapter”. Click “Next”.

### 2. Connect | Connecting the Cables



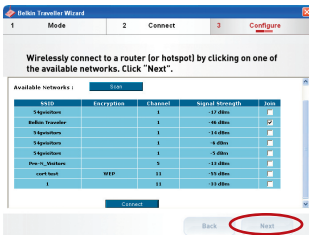
- 2.1 Connect one end of the included Ethernet cable to the Router (which is now functioning in Adapter Mode) and the other end into your PC’s RJ45 port. Next, plug the included USB power cable into the Router with the USB end in the PC’s USB port, or plug the included power supply into the Router and then into a wall outlet. Click “Next”.

# Connecting and Configuring your Router



2.2 Check to make sure that the Ethernet and Power LEDs on the front of the Router are on. Click “Next” to go to the Router’s home page on the Web.

## 3. Configure Configuration for Adapter Mode



3.1 Wirelessly connect to a network from the “Available Networks” window. Select a network by clicking “Join” and then “Connect”. The status window will tell you the current status of the network to which the Router is currently connected. Click “Next”.

**Note:** If you do not see the page pictured here once you have established a connection with the Router, please refer to the “Using the Adapter Mode” section in this manual on page 67.

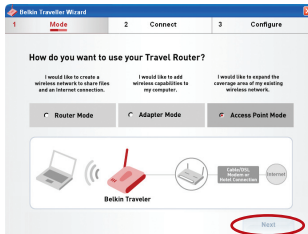


3.2 Your installation is now complete. However, if you would like to set up any advanced features (such as security features), you may click the “Advanced Features” button or type “192.168.2.225” into the navigation bar of your web browser.

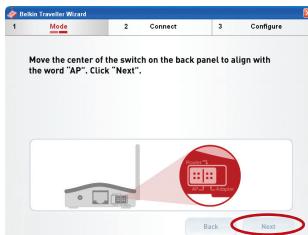
# Connecting and Configuring your Router

## Access Point Mode Installation

### 1. Mode | Selecting the Access Point Mode

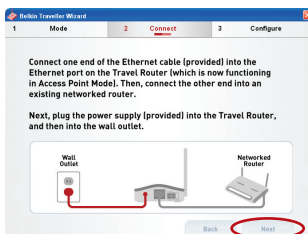


- 1.1 Select "Access Point Mode". Click "Next".



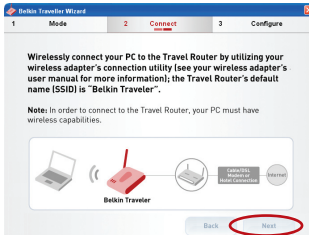
- 1.2 Move the center of the switch on the back panel to align with the word "AP". Click "Next".

### 2. Connect | Connecting the Cables



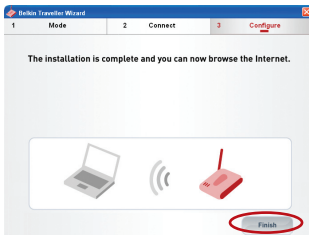
- 2.1 Connect one end of the included Ethernet cable to the Router (which is now functioning in Access Point Mode) and the other end to a cable/DSL modem. Next, plug the included power supply into the Router and click "Next".

# Connecting and Configuring your Router



**2.2** From your PC, wirelessly connect to the Router using your PC's built-in wireless card or external wireless adapter. The network name (SSID) of the Router is "Belkin Traveler". Once you have wirelessly connected, click "Next".

## 3. Configure Configuration for Access Point Mode



**3.1** Once you have established a connection with the Router, your installation is complete. However, if you would like to set up any advanced features (such as security features), you may click the "Advanced Features" button or type "192.168.2.254" into the navigation bar of your web browser.

# Using the Web-Based Advanced User Interface

---

The Web-Based Advanced User Interface is a web-based tool that you can use to set up the Router if you don't want to use the Easy Install Wizard. You can also use it to manage advanced Router functions. From the Web-Based Advanced User Interface window, you can perform the following tasks:

- View the Router's current settings and status
- Configure the Router to connect to your ISP with the settings that they provided you
- Change current network settings such as the internal IP address, the IP address pool, DHCP settings, and more
- Set the Router's firewall to work with specific applications via port forwarding
- Set up security features such as client restrictions, MAC address filtering, WEP, and WPA
- Enable the DMZ feature for a single computer on your network
- Change the Router's internal password
- Enable/disable UPnP (Universal Plug-and-Play)
- Reset the Router
- Back up your configuration settings
- Reset the Router's default settings
- Update the Router's firmware

You can access the Router's Web-Based Advanced User Interface using your Internet browser. In the navigation bar of your browser, type "192.168.2.1" (you do not need to type in "http://" or "www"). Press the "Enter" key.

Address	192.168.2.1
---------	-------------

**PLEASE NOTE:** If you have difficulty accessing the Router's Web-Based Advanced User Interface, go to the section of this User Manual entitled "Manually Configuring Network Settings".

## Logging into the Router

You will see the Router's home page in your browser window. The home page is visible to any user who wants to see it. To make any changes to the Router's settings, you have to log in. Clicking the "Login" button or clicking on any one of the links on the home page

# Using the Web-Based Advanced User Interface

will take you to the login screen. The Router ships with no password. In the login screen, leave the password field blank and click “Submit” to log in.

## Login

Before you can change any settings, you need to log in with a password. If you have not yet set a custom password, then leave this field blank and click “Submit.”

**Password**

Default = leave blank

## Logging out of the Router

One computer at a time can log into the Router to make changes to Router settings. Once a user has logged in to make changes, there are two ways that the computer can be logged out. The first is to click the “Logout” button. The second method is automatic. The login will time out after a specified period of time. The default login time-out is 10 minutes. This can be changed to any period of time from 1 to 99 minutes. For more information, see the section in this manual entitled “Login Time-Out”.

1

2

3

4

5

6

7

8

9

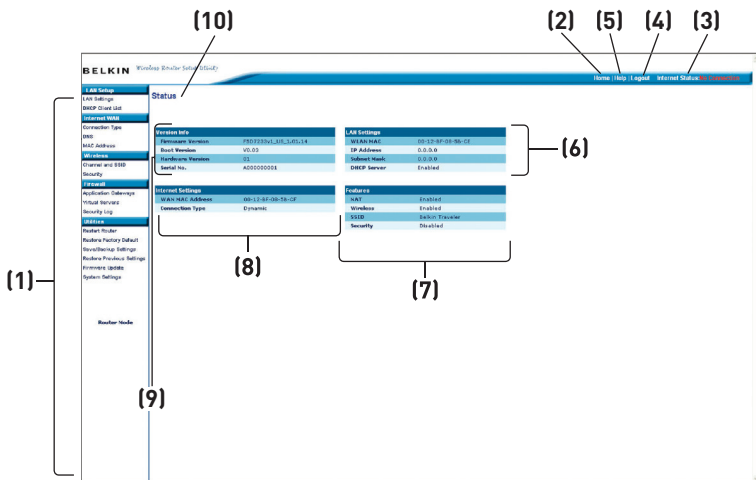
10

11

section

## Using the Web-Based Advanced User Interface

The home page is the first page you will see when you access the Web-Based Advanced User Interface (UI). The home page provides a quick view of the Router's status and settings. All advanced setup pages can be reached from this page.



### 1. Quick-Navigation Links

You can go directly to any of the Router's UI pages by clicking directly on these links. The links are divided into logical categories and grouped by tabs to make finding a particular setting easier to find. Clicking on the purple header of each tab will show you a short description of the tab's function.

### 2. Home Button

The "Home" button is available in every page of the UI. Pressing this button will take you back to the home page.

### 3. Internet Status Indicator

This indicator is visible in all pages of the UI, indicating the connection status of the Router. When the indicator says "connection OK" in GREEN, the Router is connected to the Internet. When the Router is not connected to the Internet, the indicator will read "no connection" in RED. The indicator is automatically updated when you make changes to the settings of the Router.

## 4. Login/Logout Button

This button enables you to log in and out of the Router with the press of one button. When you are logged into the Router, this button will change to read “Logout”. Logging into the Router will take you to a separate login page where you will need to enter a password. When you are logged into the Router, you can make changes to the settings. When you are finished making changes, you can log out of the Router by clicking the “Logout” button. For more information about logging into the Router, see the section called “Logging into the Router”.

## 5. Help Button

The “Help” button gives you access to the Router’s help pages. Help is also available on many pages by clicking “more info” next to certain sections of each page.

## 6. LAN Settings

Shows you the settings of the Local Area Network (LAN) side of the Router. Changes can be made to the settings by clicking on any one of the links (IP Address, Subnet Mask, DHCP Server) or by clicking the “LAN” “Quick Navigation” link on the left side of the screen.

## 7. Features

Shows the status of the Router’s NAT, firewall, and wireless features. Changes can be made to the settings by clicking on any one of the links or by clicking the “Quick Navigation” links on the left side of the screen.

## 8. Internet Settings

Shows the settings of the Internet/WAN side of the Router that connects to the Internet. Changes to any of these settings can be made by clicking on the links or by clicking on the “Internet/WAN” “Quick Navigation” link on the left side of the screen.

## 9. Version Info

Shows the firmware version, boot-code version, hardware version, and serial number of the Router.

## 10. Page Name

The page you are on can be identified by this name. This User Manual will sometimes refer to pages by name. For instance “LAN > LAN Settings” refers to the “LAN Settings” page.

1

2

3

4

5

6

7

8

9

10

11

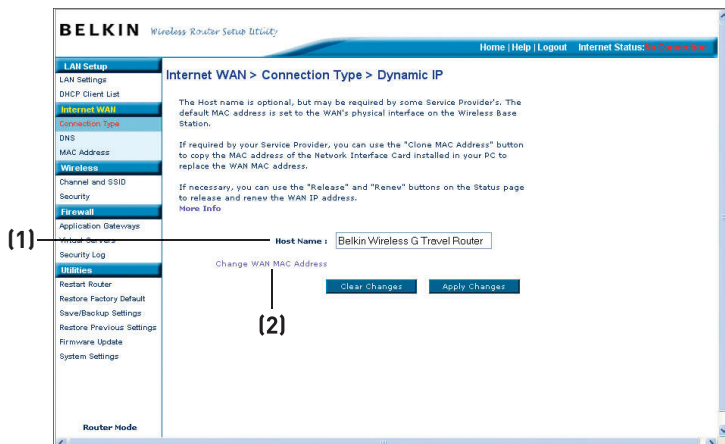
section



## Setting your Connection Type

### Setting your Internet Service Provider (ISP) Connection Type to Dynamic IP

A dynamic connection is the most common connection type used with cable modems. Setting the connection type to “dynamic” in many cases is enough to complete the connection to your ISP. Some dynamic connections may require a host name. If your ISP assigned you a host name, you can enter it in the space provided. Some dynamic connections may require that you clone the MAC address of the PC that was originally connected to the modem.



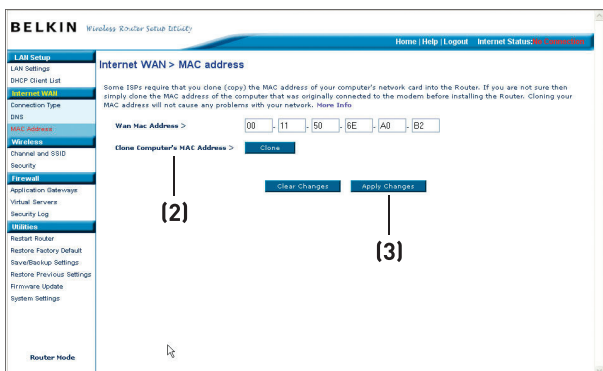
#### 1. Host Name

If a host name must be visible to your ISP, enter the host name your ISP has provided here. Click “Apply Changes” (3). If your ISP did not assign you a host name, or you are uncertain about whether your ISP requires a visible host name, leave this field blank.

#### 2. Change WAN MAC Address

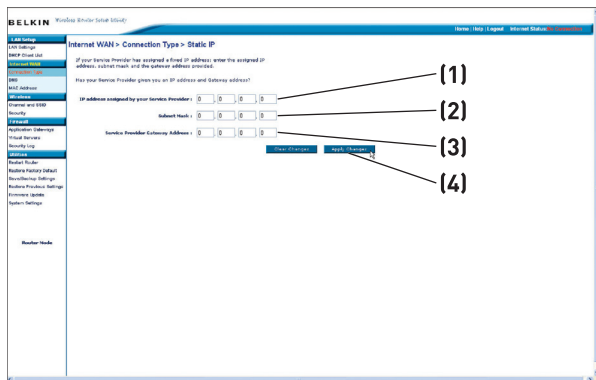
If your ISP requires a specific MAC address to connect to the service, you can enter a specific MAC address or clone the current computer's MAC address through this link.

# Using the Web-Based Advanced User Interface



## Setting your Internet Service Provider (ISP) Connection Type to Static IP

A static IP connection is less common than other connection types. If your ISP uses static IP addressing, you will need your IP address, subnet mask, and ISP gateway address. This information is available from your ISP. Type in your information, then click “Apply Changes” **(4)**. After you apply the changes, if your Router is set up properly, the “Internet Status” indicator will read “Connected”.



### 1. IP Address

Provided by your ISP. Enter your IP address here.

### 2. Subnet Mask

Provided by your ISP. Enter your subnet mask here.

### 3. ISP Gateway Address

Provided by your ISP. Enter the ISP gateway address here.