

# Using the Web-Based Advanced User Interface

---

5. For a home or small business user, select “WPA-PSK” under “Network Authentication”.

**Note:** Select “WPA” if you are using this computer to connect to a corporate network that supports an authentication server such as a radius server. Please consult your network administrator for further information.

6. Select “TKIP” or “AES” under “Data Encryption”. This setting will have to be identical to the Router that you set up.
7. Type in your encryption key in the “Network key” box.

**Important:** Enter your pre-shared key. This can be from eight to 63 characters and can be letters, numbers, or symbols. This same key must be used on all of the clients that you set up.

8. Click “OK” to apply settings.

1

2

3

4

5

6

7

8

9

10

11

section

# Using the Web-Based Advanced User Interface

## Utilities Tab

This screen lets you manage different parameters of the Router and perform certain administrative functions.

The screenshot shows the 'Utilities' tab in the Belkin Wireless Router Setup Utility. The interface includes a navigation menu on the left with options like LAN Settings, DHCP Client List, and Router Status. The main content area is titled 'Utilities >' and contains a list of administrative functions with their descriptions:

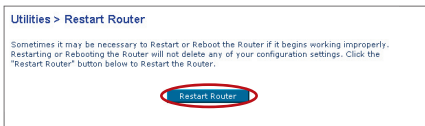
- Reset Router**: Resets the router to factory defaults. A warning states that this action will delete all user configuration settings.
- Restore Factory Default**: Restores the router to its factory default settings. A warning states that this action will restore all settings to defaults and that users should backup their settings before proceeding.
- Save Backup Settings**: Allows users to save their current configuration as a backup file. A warning states that this action will overwrite any existing backup files.
- Router Firmware Configuration**: Allows users to update the router's firmware. A warning states that this action will update the router to the latest version and that users should backup their settings before proceeding.
- Remote Update**: Allows users to update the router's firmware remotely. A warning states that this action will update the router to the latest version and that users should backup their settings before proceeding.
- System Settings**: Allows users to configure the router's system settings, such as the time zone and the remote management function.

## Restarting the Router

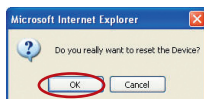
Sometimes it may be necessary to restart or reboot the Router if it begins working improperly. Restarting or rebooting the Router will NOT delete any of your configuration settings.

## Restarting the Router to Restore Normal Operation

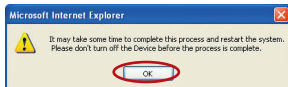
1. Click the “Restart Router” button.



2. The following message will appear. Click “OK”.



3. The following message will appear. Restarting the Router can take up to 25 seconds. It is important not to turn off the power to the Router during the restart.



4. A 25-second countdown will appear on the screen. When the countdown reaches zero, the Router will be restarted. The Router's home page should appear automatically. If not, type in the Router's address (default = 192.168.2.1) into the navigation bar of your browser.

# Using the Web-Based Advanced User Interface

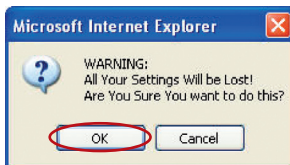
## Restoring Factory Default Settings

Using this option will restore all of the settings in the Router to the factory (default) settings. It is recommended that you back up your settings before you restore all of the defaults.

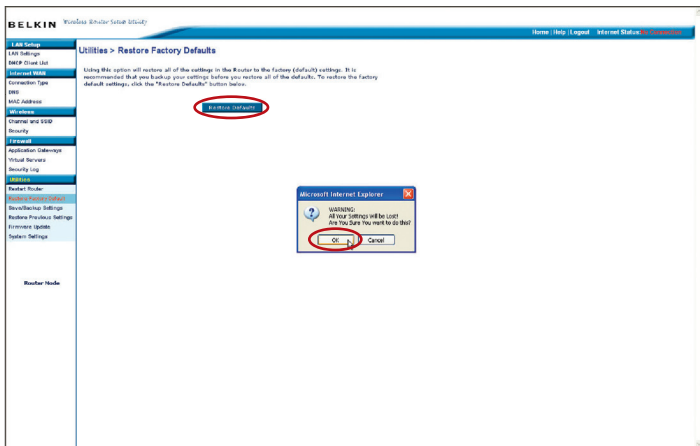
1. Click the “Restore Defaults” button.



2. The following message will appear. Click “OK”.



3. The following message will appear. Restoring the defaults includes restarting the Router. It can take up to 25 seconds. It is important not to turn the power to the Router off during the restart.



4. A 25-second countdown will appear on the screen. When the countdown reaches zero, the Router's defaults will be restored. The Router's home page should appear automatically. If it does not, type in the Router's address (default = 192.168.2.1) into the navigation bar of your browser.

## Saving a Current Configuration

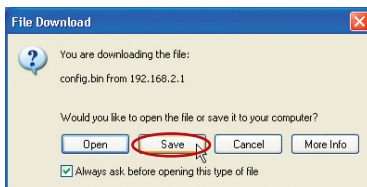
You can save your current configuration by using this feature. Saving your configuration will allow you to restore it later if your settings are lost or changed. It is recommended that you back up your current configuration before performing a firmware update.

### Utilities > Save/Backup current settings

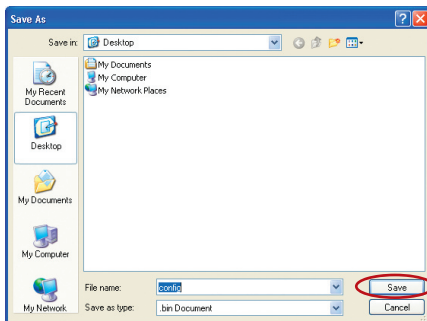
You can save your current configuration by using this feature. Saving your configuration will allow you to restore it later if your settings are lost or changed. It is recommended that you backup your current configuration before performing a firmware update.

A blue button with the word "Save" in white text, circled in red.

1. Click "Save". A window called "File Download" will open. Click "Save".



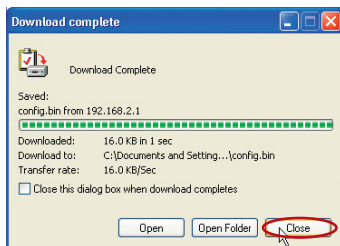
2. A window will open that allows you to select the location where you want to save the configuration file. Select a location. You can name the file anything you want, or use the default name "Config". Be sure to name the file so you can locate it yourself later. When you have selected the location and name of the file, click "Save".



# Using the Web-Based Advanced User Interface

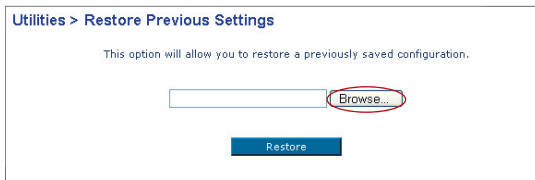
- When the save is complete, you will see the following window. Click “Close”.

The configuration is now saved.

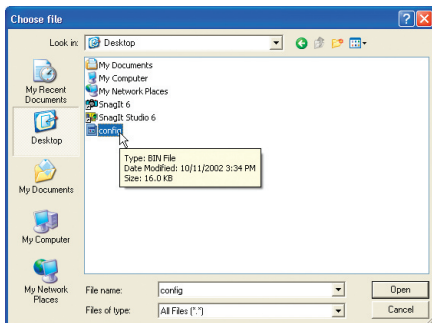


## Restoring a Previous Configuration

This option will allow you to restore a previously saved configuration.



- Click “Browse”. A window will open that allows you to select the location of the configuration file. All configuration files end with a “.bin”. Locate the configuration file you want to restore and double-click on it.



## Using the Web-Based Advanced User Interface

1

2

3

4

5

6

7

8

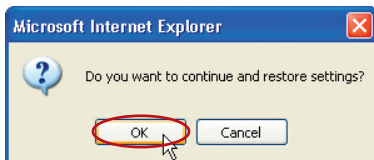
9

10

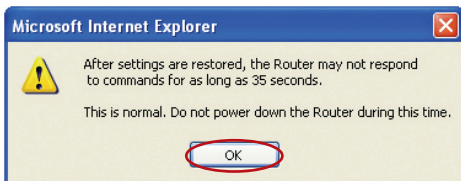
11

section

2. You will be asked if you want to continue. Click “OK”.



3. A reminder window will appear. It will take up to 35 seconds for the configuration restoration to complete. Click “OK”.



4. A 35-second countdown will appear on the screen. When the countdown reaches zero, the Router’s configuration will be restored. The Router’s home page should appear automatically. If not, type in the Router’s address (default = 192.168.2.1) into the navigation bar of your browser.

# Using the Web-Based Advanced User Interface

## Updating the Firmware

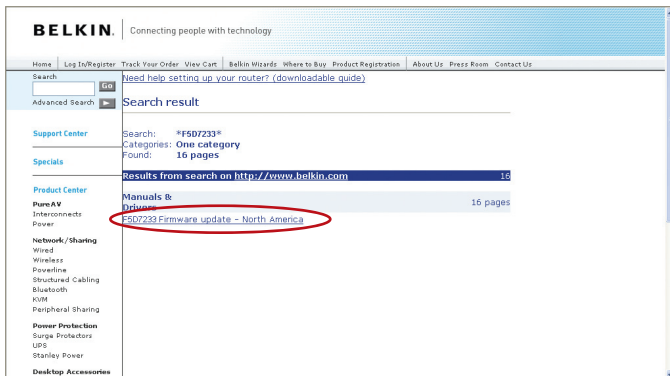
From time to time, Belkin may release new versions of the Router's firmware. Firmware updates contain feature improvements and fixes to problems that may exist. When Belkin releases new firmware, you can download the firmware from the Belkin update website and update your Router's firmware to the latest version.

## Searching for a New Version of Firmware

From <http://www.belkin.com/support/downloads.asp>, type in the Belkin part number "F5D7233" on the "Search" field. Click "Search".



From the results page, click "F5D7233 Firmware update - North America".



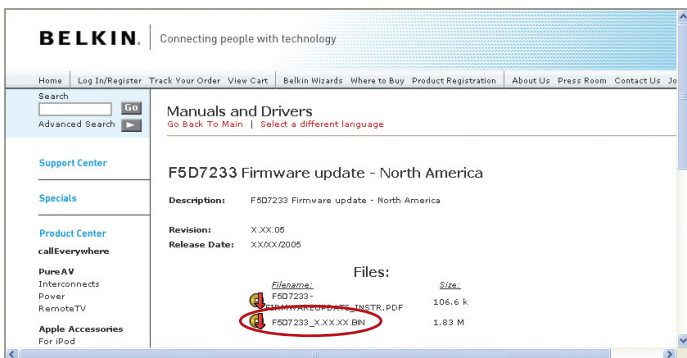


# Using the Web-Based Advanced User Interface

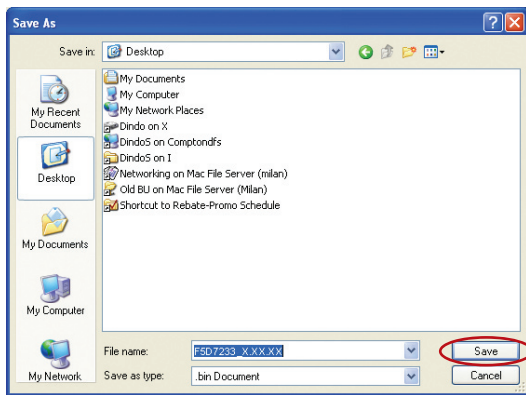
1  
2  
3  
4  
5 section  
6  
7  
8  
9  
10  
11

## Downloading a New Version of Firmware

You will now be taken to the download page of “F5D7233 Firmware update - North America”.

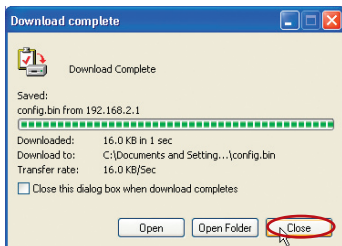


1. To download the new version of firmware, click the download logo (📄).
2. A window will open that allows you to select the location where you want to save the firmware file. Select a location. You can name the file anything you want, or use the default name. Be sure to save the file in a place where you can locate it yourself later. **Note:** We suggest saving this to your desktop to make it easy to locate the file. When you have selected the location, click “Save”.



# Using the Web-Based Advanced User Interface

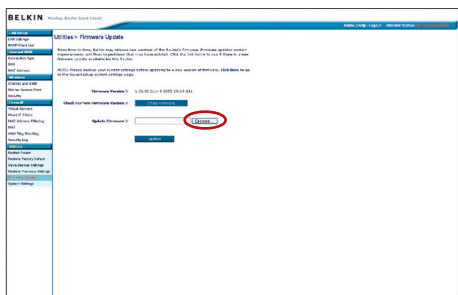
- When the save is complete, you will see the following window. Click “Close”.



The download of the firmware is complete. To update the firmware, follow the next steps in “Updating the Router’s Firmware”.

## Updating the Router’s Firmware

- In the “Firmware Update” page, click “Browse”. A window will open that allows you to select the location of the firmware update file.



- Browse to the firmware file you downloaded. Select the file by double-clicking on the file name.

