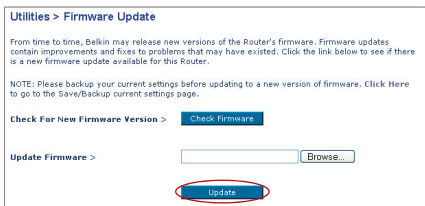
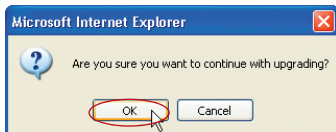


# Using the Web-Based Advanced User Interface

3. The “Update Firmware” box will now display the location and name of the firmware file you just selected. Click “Update”.



4. You will be asked if you are sure you want to continue. Click “OK”.



5. You will see one more message. This message tells you that the Router may not respond for as long as one minute as the firmware is loaded into the Router and the Router is rebooted. Click “OK”.



6. A 60-second countdown will appear on the screen. When the countdown reaches zero, the Router’s firmware update will be complete. The Router’s home page should appear automatically. If not, type in the Router’s address (default = 192.168.2.1) into the navigation bar of your browser.

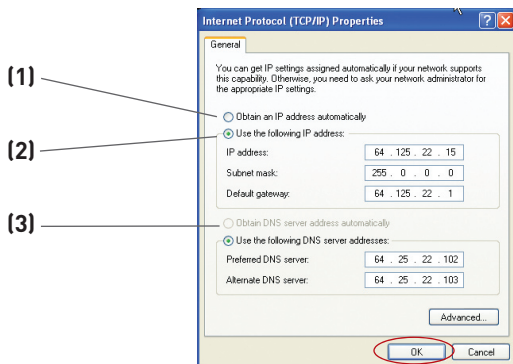
**The firmware update is complete.**

# Manually Configuring Network Settings

In order for your computer to properly communicate with your Router, you will need to change your PC's TCP/IP settings to DHCP.

## Manually Configuring Network Adapters in Windows 2000, NT, or XP

1. Click “Start”, “Settings”, then “Control Panel”.
2. Double-click on the “Network and dial-up connections” icon (Windows 2000) or the “Network” icon (Windows XP).
3. Right-click on the “Local Area Connection” associated with your network adapter and select “Properties” from the drop-down menu.
4. In the “Local Area Connection Properties” window, click “Internet Protocol (TCP/IP)” and click the “Properties” button. The following screen will appear:



5. If “Use the following IP address” **(2)** is selected, your Router will need to be set up for a static IP connection type. Write the address information in the table below. You will need to enter this information into the Router.

IP address:	<input type="text"/>
Subnet Mask:	<input type="text"/>
Default gateway:	<input type="text"/>
Preferred DNS server:	<input type="text"/>
Alternate DNS server:	<input type="text"/>

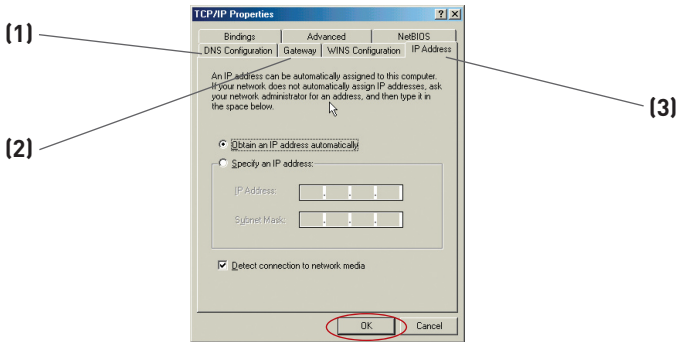
6. If not already selected, select “Obtain an IP address automatically” **(1)** and “Obtain DNS server address automatically” **(3)**. Click “OK”.

**Your network adapter/s is/are now configured for use with the Router.**

# Manually Configuring Network Settings

## Manually Configuring Network Adapters in Windows 98SE or Me

1. Right-click on “My Network Neighborhood” and select “Properties” from the drop-down menu.
2. Select “TCP/IP -> settings” for your installed network adapter. You will see the following window.



3. If “Specify an IP address” is selected, your Router will need to be set up for a static IP connection type. Write the address information in the table below. You will need to enter this information into the Router.

IP address:	<input type="text"/>
Subnet Mask:	<input type="text"/>
Default gateway:	<input type="text"/>
Preferred DNS server:	<input type="text"/>
Alternate DNS server:	<input type="text"/>

4. Write in the IP address and subnet mask from the “IP Address” tab **(3)**.
5. Click the “Gateway” tab **(2)**. Write the gateway address down in the chart.
6. Click the “DNS Configuration” tab **(1)**. Write the DNS address(es) in the chart.
7. If not already selected, select “Obtain IP address automatically” in the “IP Address” tab. Click “OK”.

**Restart the computer. When the computer restarts, your network adapter/s is/are now configured for use with the Router.**

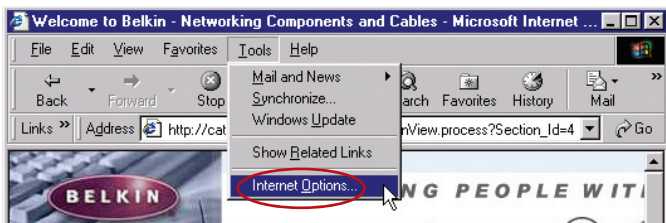
# Recommended Web Browser Settings

---

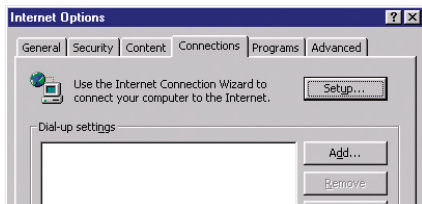
In most cases, you will not need to make any changes to your web browser's settings. If you are having trouble accessing the Internet or the Web-Based Advanced User Interface, then change your browser's settings to the recommended settings in this section.

## Internet Explorer 4.0 or Higher

1. Start your web browser. Select "Tools" then "Internet Options".



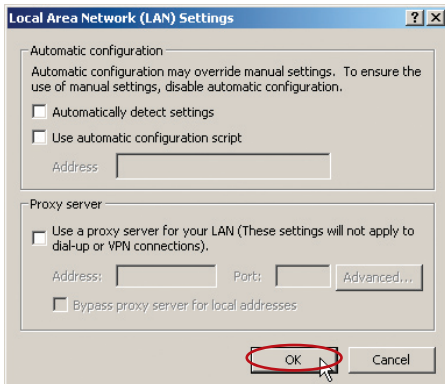
2. In the "Internet Options" screen, there are three selections: "Never dial a connection", "Dial whenever a network connection is not present", and "Always dial my default connection". If you can make a selection, select "Never dial a connection". If you cannot make a selection, go to the next step.



3. Under the "Internet Options" screen, click on "Connections" and select "LAN Settings...".

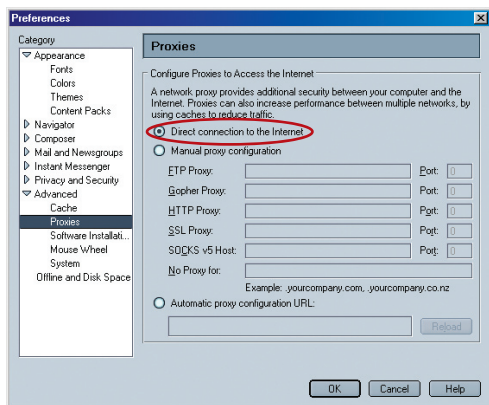
# Recommended Web Browser Settings

4. Make sure there are no check marks next to any of the displayed options: “Automatically detect settings”, “Use automatic configuration script”, and “Use a proxy server”. Click “OK”. Then click “OK” again in the “Internet Options” page.



## Netscape® Navigator® 4.0 or Higher

1. Start Netscape. Click on “Edit” then “Preferences”.
2. In the “Preferences” window, click on “Advanced” then select “Proxies”. In the “Proxies” window, select “Direct connection to the Internet”.



1

2

3

4

5

6

7

8

9

10

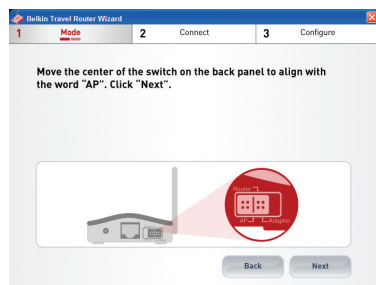
11

section

# Using the Access Point Mode

---

**Note:** This advanced feature should be employed by advanced users only. The Router can be configured to work as a wireless-network access point. Using this mode will defeat the NAT IP sharing feature and DHCP server. In Access Point (AP) mode, the Router will need to be configured with an IP address that is in the same subnet as the rest of the network to which you will bridge. The default IP address is 192.168.2.254 and the default subnet mask is 255.255.255.0. These can be customized to meet your needs.



1. Move the center of the button on the back panel to align with the word "AP".

2. Enable the AP mode by selecting "Enable" in the "Use as Access Point only" page. When you select this option, you will be able to change the IP settings.
3. Set your IP settings to match your network. Click "Apply Changes".
4. Connect a cable from the WAN port on the Router to your existing network.

The Router is now acting as an access point. To access the Router's Web-Based Advanced User Interface again, type the IP address you specified into your browser's navigation bar. You can set the encryption settings, MAC address filtering, SSID, and channel normally.

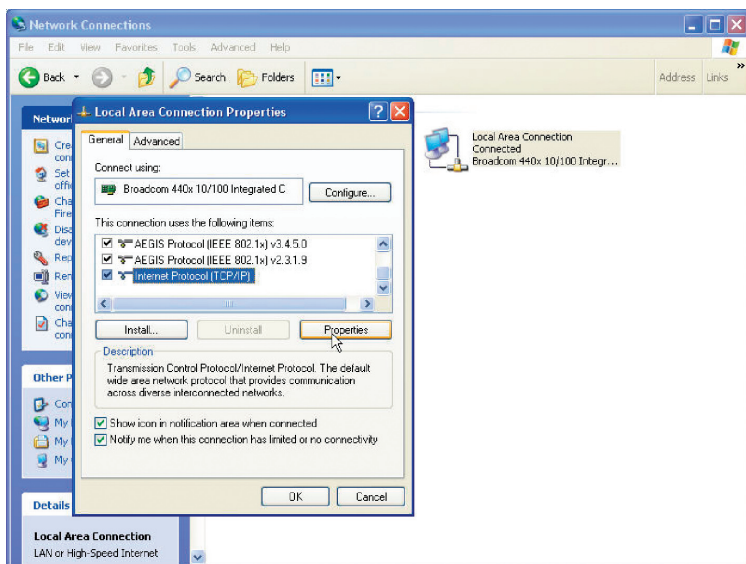
# Using the Adapter Mode

1  
2  
3  
4  
5  
6  
7  
8  
9  
10  
11

## Setting Up your Computer to Use the Web-Based Advanced User Interface

The default IP address of the Router (while functioning in Adapter Mode) is 192.168.2.225. You will need to set your computer's IP address to the same subnet (e.g., 192.168.2.224) before you can access the Web-Based Advanced User Interface. Perform the following steps from Windows 98SE, Me, 2000, or XP:

1. Move the center of the switch on the back panel to align with the word "Adapter".
2. Go to the Windows Control Panel and double-click on the "Network" icon or the "Network Connections" icon.
3. Right-click on the "Local Area Connection" button for your Router and select "Properties".



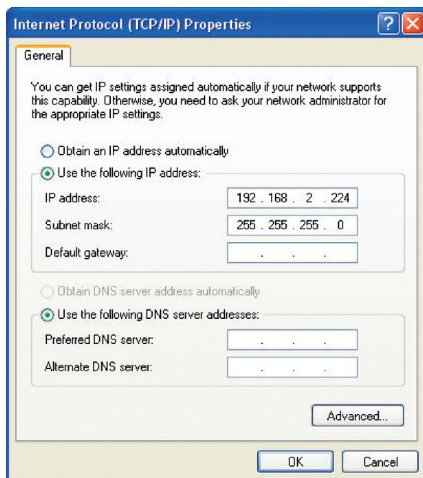
section

4. In the "General" window, select the Internet Protocol TCP/IP settings for your Router and click on "Properties".
5. Select the "Use the following IP address" radio button.

## Using the Adapter Mode

---

6. Enter an IP address in the same subnet as the access point (for example, 192.168.2.224).



7. Enter the following subnet mask: 255.255.255.0. Click "OK".

**Warning:** Once you have configured your Router, you must repeat steps 1 through 3 and select "Obtain an IP automatically" or set a valid IP for your computer on the same subnet as the network to which you are connecting.

### Connect Using Adapter Mode

Using your Internet browser, you can access the Web-Based Advanced User Interface. In your browser, type "192.168.2.225" (do not type in "http://" or "www"). Then press the "Enter" key.

### Logging into the Web-Based Advanced User Interface

You will see the Web-Based Advanced User Interface home page in your browser window. The home page is visible to any user who wants to see it. To make any changes to the Router's settings, you have to log in. Clicking the "Login" button or clicking on any one of the links on the home page will take you to the login screen. The Router ships with no password. In the login screen, leave the password blank and click "Submit" to log in.





1

2

3

4

5

6

7

8

9

10

11

## Logging Out of the Web-Based Advanced User Interface

One computer at a time can log into the Router to make changes to the Router's settings. Once a user has logged in to make changes, there are two ways that the computer can be logged out. The first is to click the "Logout" button. The second method is automatic. The login will time out after a specified period of time. The default login time-out is 10 minutes. This can be changed to any period of time from 1 to 99 minutes.

## Login Time-Out

The login time-out option allows you to set the period of time that you can be logged into the Router's Web-Based Advanced User Interface. The timer starts when activity stops. For example, you have made some changes in the Web-Based Advanced User Interface, and then left your computer alone without clicking "Logout". If the time-out is set to 10 minutes (the default setting), then 10 minutes after you leave, the login session will expire. You will have to log into the Router again to make any more changes. The login time-out option provides additional security.

**Note:** Only one computer can be logged into the Router's Web-Based Advanced User Interface at one time.

## Understanding the Web-Based Advanced User Interface

The home page is the first page you will see when you access the Web-Based Advanced User Interface (UI). The home page provides a quick view of the Router's status and settings. All setup pages can be reached from this page.

**BELKIN** Wireless Setup Utility Home | Help | Logout

**LAN Setup**

LAN Settings

**Wireless Connection**

Networks Available

Security Settings

**Utilities**

Restart Client

Restore Factory Default

Save/Backup Settings

Restore Previous Settings

Firmware Update

System Settings

Security Log

**Adapter Mode**

**Status**

**Version Info**

Firmware Version	F507233v1_US_1.01.17
Boot Version	V0.03
Hardware Version	01
Serial No.	0011506EAGAC

**Internet Settings**

WAN MAC Address	00-00-00-00-00-00
Connection Type	Dynamic

**Wireless Connection**

Wireless	Enabled
Networks Available	Pre-N_Visitors
Security Settings	Disabled

**LAN Settings**

WLAN MAC	00-11-50-EE-AD-AC
IP Address	192.168.2.225
Subnet Mask	255.255.255.0

## Status

### 1. Quick-Navigation Links

You can go directly to any of the pages by clicking directly on these links. The links are divided into logical categories and grouped by tabs to make finding a particular setting easy.

### 2. Version Information

Shows the firmware version, boot-code version, and hardware version.

### 3. LAN Settings

Shows the settings of the Local Area Network (LAN) side of the Router. Changes can be made to the settings by clicking the quick-navigation links on the left side of the screen.

### 4. Wireless Connection

Shows the status of the Router's wireless setting. Changes can be made to the settings by clicking the quick-navigation links on the left side of the screen.