

# Table of contents

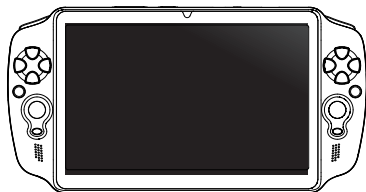
---

Package Contents.....	2
Getting started.....	3
Description of the device.....	4
Through the wizard.....	6
Connecting to a WiFi network.....	7
ARCHOS mapping tool.....	8
Android™ interface.....	14
Getting familiar with Android™ .....	18
Troubleshooting.....	20

For more information, please consult the FAQs on [www.archos.com](http://www.archos.com). Make sure to read them before considering any product return. Your deal may be no big deal. As we are often updating and improving our products, your device's software may have a slightly different appearance or modified functionality than presented in this quick start guide.

# Package Contents

---



ARCHOS GamePad



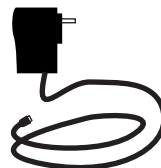
QSG booklet



Warranty legal & safety booklet



USB cable



Charger

# Getting Started

---

## Charging

Charge your device by plugging your power cable into the micro-USB port.

The GamePad will turn on and start charging.

The charging indicator is red when the battery is charging.

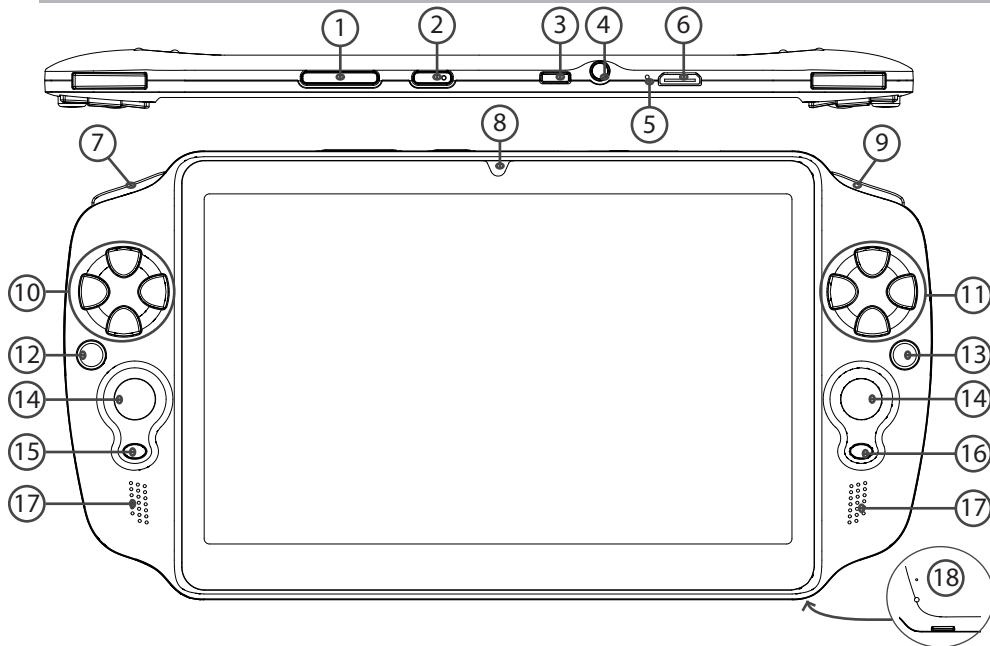
The charging indicator becomes orange when the battery is charged.



You can use your GamePad whilst it charges.

### **TIPS:**

- Let your device charge completely the first time you use it.
- Use only the supplied charger.
- To receive more complete service, please register your product on [www.archos.com/register](http://www.archos.com/register).

# Description of the device



- 
- |   |                         |   |  |
|---|-------------------------|---|--|
| ① | Volume buttons          | ⑩ |  Directional pad    |
| ② | ON/OFF button           | ⑪ |  A, B, Y, X buttons |
| ③ | Micro-USB port          | ⑫ | L2 button  |
| ④ | Headphone jack          | ⑬ | R2 button  |
| ⑤ | Microphone              | ⑭ | Analog sticks  |
| ⑥ | Mini-HDMI video output* | ⑮ | SELECT button  |
| ⑦ | L1 button               | ⑯ | START button   |
| ⑧ | Camera                  | ⑰ | Loudspeakers   |
| ⑨ | R1 button               | ⑱ | Micro-SD card slot   |

\* With optional Mini-HDMI to HDMI cable.

# Through the Wizard

---

The first time you start up your GamePad, the installation wizard will help you set up your device:

- Touch-screen calibration
- Language
- Date & time
- WiFi connection
- Location service options
- 3rd party apps

**TIP:**

We recommend that you set up your GamePad in the WiFi zone of the network that you will regularly be using.

# Connectivity to a WiFi Network

**WARNING:** Make sure that you are in a WiFi zone.

1. Touch the time in the status bar.

The status dashboard is displayed.

2. Touch the time a second time in the status dashboard.

The quick settings will be displayed.

3. Touch "WiFi" to open the WiFi settings menu.

4. If the WiFi is off, slide the WiFi switch to the "ON" position.

Once the WiFi is on, the GamePad will scan for WiFi networks in range.

5. Touch the name of network you want to connect to.

Private networks are shown with a lock icon and will require you to enter a password.

## **TIPS:**

- When entering a WiFi password, we recommend that you select "Show password" so you can see the characters you are typing.
- To get the correct WiFi password (or settings) for the network, contact the WiFi network provider.
- If your WiFi is on and you are in range of a network that you previously connected to, your GamePad will automatically attempt to connect to it.

# ARCHOS mapping tool

ARCHOS mapping tool is an application installed in your GamePad. It allows you to link the virtual controls of games to the physical controls of the GamePad by using mapping controls.



## Tip1:

Within ARCHOS mapping tool, there are already mapping profiles for over 100 games. Also, many games function automatically with physical buttons.

## Tip2:

Whenever you launch a game whose virtual controls are mapped, the right mapping profile will automatically be selected.



## Starting ARCHOS mapping tool

1. Launch a game.

When you reach the starting screen, the virtual controls are displayed.

2. Select the ARCHOS mapping tool icon from the system bar.

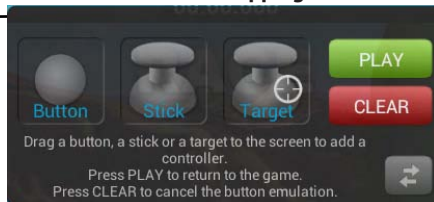


ARCHOS mapping tool icon

The mapping overlay is displayed with the mapping tool interface.



### ARCHOS mapping tool interface



## Positioning a mapping control

Hold and drag a type of mapping control to the desired virtual button.

There are three types of mapping control



Button

It is for the directional pad ◀, ▶, ▼, ▲, the X, Y, B, A, buttons and the L1, R1, L2, R2, Start, Select buttons.



Stick

It is for the analog directional sticks.



Target

It is for analog stick targeting. It is placed normally in the central area of the screen on shooting games.



## Linking a mapping control to a physical control

1. When a mapping control is placed on a virtual control, you are asked to select the desired physical control you want to associate with it.



2. Once a physical control is associated to the mapping control, the name of the physical control is displayed on the mapping control.




## Enlarging a mapping control

Some virtual controls are larger than the mapping controls.  
Pinch to enlarge the mapping control so that it is tailored to the virtual control.

The size of the mapping control must be tailored to the virtual control.



## Saving your parameters

When you have mapped the virtual controls of a game, select "Play"  to validate .  
The profile is saved and associated with that game.

The mapping overlay disappears and you can play.

Whenever you start the game, you are informed that:  **Gamepad emulation is running**

### Tips:

- You can only enlarge the mapping controls Stick and Target.
- Each mapping is specific to a game.

## Q&A about the mapping

You placed a mapping control on a virtual control but no option is available?

1. Hold your finger on the mapping control.

A menu box is displayed

2. Select the  icon to set up the mapping control.

You want to remove a mapping control that you set?

1. Hold your finger on the mapping control.

A menu box is displayed

2. Select the  icon to remove the mapping control.

You want to remove a mapping profile set for a game?

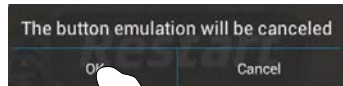
1. From ARCHOS mapping tool, select "Clear".

2. Select "OK" to confirm.

### Displaying options



### Removing a mapping profile



# The Android™ Interface



---

① **Google™ Search**

Touch "Google" for text search or touch the microphone icon for voice search.

② **"Recent apps" button**

③ **"Home" button**

④ **"Back" button**

⑤ **"All Apps" button**

Touch this icon to show all the applications and widgets installed on your ARCHOS.  
All your downloaded applications are here.

⑥ **Widget**

⑦ **Android™ apps shortcuts**

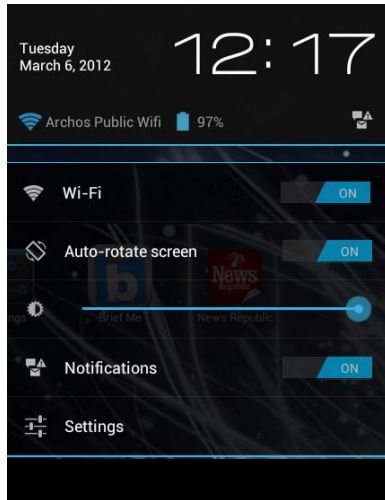
Touch to start an application.

⑧ **The status bar**

Displays notifications and quick settings

# The Android™ Interface

---



## The Quick settings

### WiFi:

To turn on/off your WiFi connection.

### Auto-rotate screen:

To activate/deactivate automatic screen orientation as you turn the GamePad.

### Brightness:

To adjust the screen brightness.

### Notifications:

To activate/deactivate incoming notifications.

### Settings:

To access all your settings.





## The Recent Apps

You can open a list of thumbnail images of apps you've worked with recently:

- To open an app, touch it.
- To close an app, swipe it left or right.

# Getting familiar with Android™

---

## **Google account**

A Google account lets you take full advantage of any Google apps and services.

1. Go to "Settings" > "Personal" > "Accounts & sync".
2. Select "Add account".
3. Select "Google".
4. Follow the onscreen instructions.

## **The extended home screen:**

Navigate between different home screen panels by swiping left and right.

## **Moving a home screen item:**

Touch and hold your finger onto it, then slide it to the desired location, and release your finger.

## **Removing a home screen item:**

Touch and hold it, then slide your finger towards the top of the screen and drop it over the "Remove" icon.

## **Uninstalling an item:**

From the "All apps" screens, touch and hold it, then slide your finger towards the top of the screen and drop it over the "Uninstall" bin.

---

**Creating application folders:**

Drop one app icon over another on a home screen and the two icons will be combined.

**Widgets:**

Touch the "All Apps" icon on your home screen. Touch "Widgets" at the top of the screen. From the main widgets screen, you can move around widgets just as you do for app icons.

**Changing your wallpaper:**

Hold your finger on a home screen at an empty location, then choose from the list.

**Locking the touchscreen:**

From the quick settings dashboard in the status bar, touch "Settings". In settings, scroll down and touch "Security". Touch "Screen lock". Touch the type of lock you would like to use. After you set a lock, a lock screen is displayed whenever your screen wakes up, requesting the pattern, PIN or other specified key.

# Troubleshooting

---

## **If a new software is available for your device**

You can download it from [www.archos.com/support](http://www.archos.com/support) in the page Downloads > Firmware.

## **If your device is frozen:**

Press the ON/OFF button for 10 seconds.

## **If your device doesn't turn on:**

1. Charge your device.
2. Press the ON/OFF button for 10 seconds.

## **If the touchscreen doesn't function correctly:**

From Settings, touch Touch-screen calibration.

## **If you want to extend the life of your battery:**

Decrease the screen brightness and turn off the wireless connections if not in use.

## **If your device functioning is too slow:**

Close all apps which are not currently used.

## **If your WiFi reception is too low:**

Make sure you are not far from the WiFi hotspot.

Update the firmware of the device by downloading from <http://www.archos.com/support>.

Reset and redefine your connection parameters.

Contact your WiFi connection provider.

**FCC Warning:**

- This device complies with Part 15 of the FCC Rules. Operation is subject to the following two conditions:
  - (1) this device may not cause harmful interference, and
  - (2) this device must accept any interference received, including interference that may cause undesired operation.
- Changes or modifications not expressly approved by the party responsible for compliance could void the user's authority to operate the equipment.
- NOTE: This equipment has been tested and found to comply with the limits for a Class B digital device, pursuant to Part 15 of the FCC Rules. These limits are designed to provide reasonable protection against harmful interference in a residential installation. This equipment generates, uses and can radiate radio frequency energy and, if not installed and used in accordance with the instructions, may cause harmful interference to radio communications. However, there is no guarantee that interference will not occur in a particular installation. If this equipment does cause harmful interference to radio or television reception, which can be determined by turning the equipment off and on, the user is encouraged to try to correct the interference by one or more of the following measures:
  - -- Reorient or relocate the receiving antenna.
  - -- Increase the separation between the equipment and receiver.
  - -- Connect the equipment into an outlet on a circuit different from that to which the receiver is connected.
  - -- Consult the dealer or an experienced radio/TV technician for help.

**FCC RF warning statement: The device has been evaluated to meet general RF exposure requirement. The device can be used in portable exposure condition without restriction.**