

**GO!**

# STARTING UP



**Before using your ARNOVA for the first time, completely charge the battery!**



## Charging the Battery

1. Connect the supplied power cable to the ARNOVA and to a wall outlet.
2. The ARNOVA device will start charging.  
The Power indicator light is red while the battery is charging.



## Installation Wizard

The first time you start up your ARNOVA, the installation wizard will bring you through a few screens to help you set up the principal settings: language, country, time, etc.

## DESCRIPTION OF THE DEVICE

1. Hardware Reset: in the event that your ARNOVA freezes operation, you can press the "pinhole reset" button by using a sharp object such as a toothpick.
2. Micro-USB port:
  - to charge the battery of your ARNOVA
  - to connect your ARNOVA to your computer using the included USB cable in order to transfer files
3. Micro-SD card slot
4. Headphone jack
5. On/Off button
6. Microphone
7. Previous page button
8. Menu button
9. Next page button



### IMPORTANT:

Your device is frozen. You can turn it off. Press the ON/OFF button **5** for 10 seconds or press the reset button **1**.





# CONNECTING TO THE WIFI NETWORK



For this procedure to work, you need to be in a WiFi zone that will allow you to connect to it. Every time the ARNOVA is in range of a network that you have already configured once, it will attempt to make a connection.

## How to configure a WiFi network

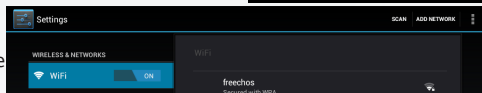
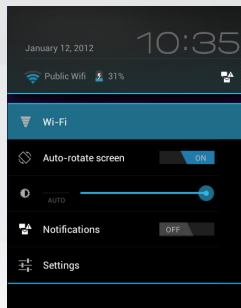
From the status bar, at the bottom right hand of the screen, you can access the WiFi settings quickly.

1. Touch the time in the status bar. The status dashboard is displayed.
2. Touch the time in the status dashboard. The setting dashboard is displayed below.
3. Touch WiFi to open the WiFi settings.
4. If the WiFi is off, slide the WiFi switch to the On position. Once the WiFi is on, the ARNOVA will scan for available WiFi networks. Secured networks are indicated with a Lock icon. If the device finds a network that you connected to previously, it connects to it.
5. Touch the network you want to connect to.
6. Enter the required network information\* and touch Connect.

We recommend that you select Show password in order to be able to see the characters you are typing.

Your ARNOVA will attempt to establish a connection to that WiFi access point.

\* For free access WiFi points, there is no need to enter any special information. For secured networks, you will need a key (a series of numbers and/or letters) of the type WEP, WPA, or WPA2. To obtain the exact connection parameters required, contact the Internet service provider.





# THE ANDROID INTERFACE

Touch for text search

Your ARNOVA device is equipped with a **capacitive touchscreen**. Use your fingertip to navigate.

These are **default Android™ applications** (Web Browser, EMail, etc.). Tap on an icon to open the corresponding application. You can customize the Home screen by adding/removing shortcuts and widgets, changing the wallpaper etc. See next page.

**The navigation bar** displays the Back, Home and Recent Apps buttons.



**All apps button**

Tap on this icon to reveal all the Android™ applications and widgets installed on your ARNOVA (games, various tools, etc.). You can copy them onto the Home screen. You can get more Android™ applications from **AppLib**.

**The status bar** displays notifications and system icons.

## Main Touchscreen buttons



The Back button - to go back to your previous screen.



The Search button - to type terms to search your tablet and the web.



The Home button - to return to the main screen.



The All apps button - to find all your apps and widgets.



The Recent Apps button - to navigate among your apps.  
- to remove a thumbnail from the list, swipe it left or right.

# THE EREADER INTERFACE

Thanks to Aldiko widget, you have access to an ereader interface.

You can:

- read your uploaded books,
- buy new books
- read Adobe-DRM protected books.

## **How can I register an Adobe ID in order to read Adobe-DRM protected books?**

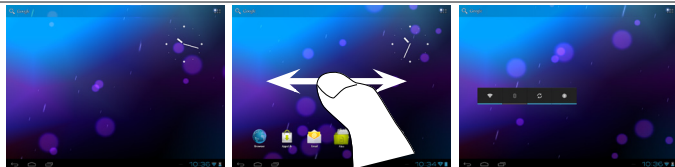
To register an Adobe ID, please go to the home page of the Aldiko Book Reader, click menu of your device and then click "Settings". After that, select "Adobe DRM" and then click the "Register" button. Fill up the information required.

Alternatively, you can also register an Adobe ID on Adobe website here: <https://www.adobe.com/cfusion/membership/>

# CUSTOMIZING YOUR PRODUCT

## The extended Home screen

Navigate between different home screen panels by swiping left and right.



## Customizing the Home screen panels

- To change your wallpaper, hold your finger on the screen at an empty location, then choose from the list.

## Arranging & working with apps

- To move a Home screen item, touch and hold your finger onto it until the positioning gridlines appear, then slide it to the desired location, and release your finger.
- To remove a Home screen item, touch and hold it, slide your finger towards the top of the screen and drop it over the Remove icon. Removing an item from the All apps screens will uninstall the item.

**Zoom:** In some apps (such as Browser, and Gallery), you can zoom in and out by placing two fingers on the screen at once and pinching them together (to zoom out) or spreading them apart (to zoom in).



**Creating application folders:** you can combine several application icons in a folder. Drop one app icon over another on a Home screen and the two icons will be combined.



## Changing the Settings

Tap on **Settings** and choose a menu among these categories: **Wireless & networks, Device, Personal, System.**

**Adding more applications with APPSLIB :** with the ARNOVA connected to the Internet, tap on the AppsLib icon . This online library has thousands of applications to download and use.



## TRANSFERRING MEDIA

1. Turn on your ARNOVA.
2. Connect the supplied USB cable to the ARNOVA and to a running computer. The ARNOVA will ask you if you want to connect it.
3. Tap on **Turn on USB storage** to connect it and press OK to confirm. Within a few seconds the ARNOVA will appear as an icon on your computer.
4. You can transfer your media files to the ARNOVA either by copy/pasting them into the respective folders using Windows® Explorer (or the Finder on a Mac®), or by using Windows Media® Player. Open Windows Media Player® and then use the **Sync** tab to synchronize your music, videos, and photos onto your ARNOVA. See Windows Media Player®'s Help to learn more about this.
5. Once all your file transfers are finished, close Windows® Explorer and any other program that may have read or written to the ARNOVA. In Windows, click on the 'safely remove' icon in the system tray, next to the clock.
6. You can now unplug the USB cable.



## REGISTER YOUR PRODUCT!

→ On the web at <http://arnovatech.com/register>

We recommend that you take a few minutes to register it (<http://arnovatech.com/register>). This will allow you to get access to ARNOVA technical support (<http://arnovatech.com/support>).



## NEED HELP?



**On our Website:** see the Frequently Asked Questions section on <http://arnovatech.com/faq>



**Contact our Technical Support Team:** visit <http://arnovatech.com/support> for e-mail support. Please register your product before contacting Technical Support (see Register your Product).

As we are often updating and improving our products, your device's software may have a slightly different appearance or modified functionality than presented in this Quick Start Guide.





## National restrictions

This device is intended for home and office use in all EU countries (and other countries following the EU directive 1999/5/EC) without any limitation except for the countries mentioned below:

Country	Restriction	Reason/remark
Bulgaria	None	General authorization required for outdoor use and public service
France	Outdoor use limited to 10 mW e.i.r.p. within the band 2454-2483.5 MHz	Military Radiolocation use. Refarming of the 2.4 GHz band has been ongoing in recent years to allow current relaxed regulation. Full implementation planned 2012
Italy	None	If used outside of own premises, general authorization is required.
Luxembourg	None	General authorization required for network and service supply (not for spectrum)
Norway	Implemented	This subsection does not apply for the geographical area within a radius of 20 km from the centre of Ny-Alesund
Russian Federation	None	Only for indoor applications

**Note: Frequency 2454-2483.5MHz are restricted to indoor use in France.**

Consult the declaration of conformity on [http://www.arnovatech.com/products/declaration\\_conformity.html](http://www.arnovatech.com/products/declaration_conformity.html)

## Open Source Software Offer

The software bundled with this product includes software files subject to certain open source license requirements. Such open source software files are subject solely to the terms of the relevant open source software license. Such open source software is provided on an "AS IS" basis to the maximum extent permitted by applicable law.

For the open source files contained herein, please access "Open source license" section located at: Settings>About tablet\Legal information on the device for the relevant copyright and licensing terms. You may obtain a copy of Apache License, Version 2.0 at <http://www.apache.org/licenses/LICENSE-2.0>. You may also obtain a copy of GNU General Public License, Version 2 at the Free Software Foundation, INC, 51 Franklin Street, Fifth Floor, Boston, MA 02110-1301, USA.

Until the date that is three years after our last shipment of this product, you may obtain a copy of the source code corresponding to the binaries for any GPL-Licensed file by contacting ARNOVA customer service at <http://www.arnovatech.com> and ARNOVA will send you a link to such source code or will provide instructions to get the source on a physical medium.

This offer is valid to anyone in receipt of this information.

## FCC Statement

This device complies with part 15 of the FCC Rules. Operation is subject to the following two conditions:

- (1) This device may not cause harmful interference, and
- (2) this device must accept any interference received, including interference that may cause undesired operation

Changes or modifications not expressly approved by the party responsible for compliance could void the user's authority to operate the equipment.

NOTE: This equipment has been tested and found to comply with the limits for a Class B digital device, pursuant to Part 15 of the FCC Rules. These limits are designed to provide reasonable protection against harmful interference in a residential installation. This equipment generates, uses and can radiate radio frequency energy and, if not installed and used in accordance with the instructions, may cause harmful interference to radio communications. However, there is no guarantee that interference will not occur in a particular installation. If this equipment does cause harmful interference to radio or television reception, which can be determined by turning the equipment off and on, the user is encouraged to try to correct the interference by one or more of the following measures:

- Reorient or relocate the receiving antenna.
- Increase the separation between the equipment and receiver.
- Connect the equipment into an outlet on a circuit different from that to which the receiver is connected.
- Consult the dealer or an experienced radio/TV technician for help.