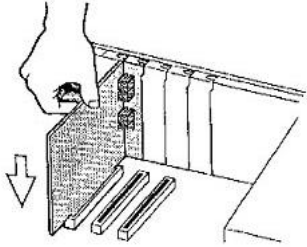
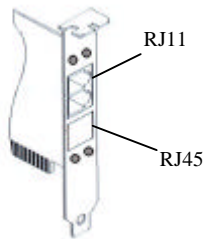


## Installation Steps; G

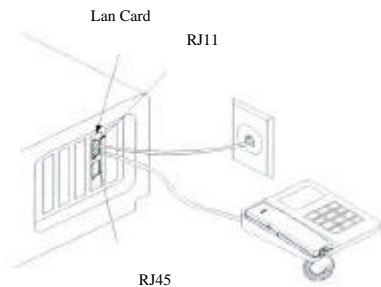
1. Removing the computer cover
2. Inserting the internal PCI Card



3. Connecting to the telephone line(RJ11) or RJ45 ----- Option



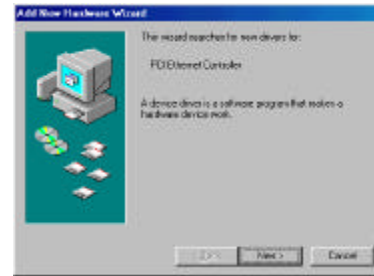
5. Verifying your connection



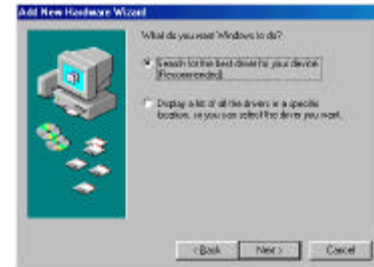
6. Replace the slot cover screw to secure the card in place
7. Close the case
8. Plug in the computer

## Windows 98 Driver Installation

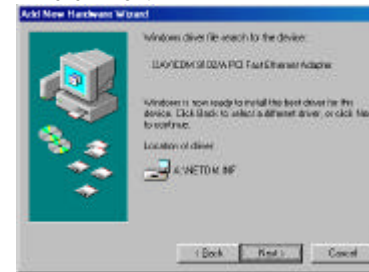
1. Turn on the computer. As Windows 98 starts up, it informs you that it has found new hardware "**PCI Ethernet Controller**" and starts the Update Device Driver Wizard. Click "**Next**".



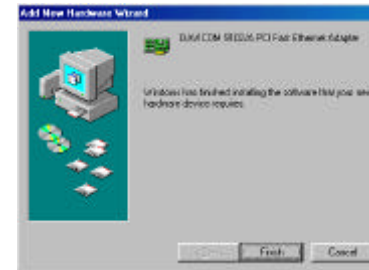
2. Insert the driver installation diskette before continuing with the Update Device Driver Wizard.



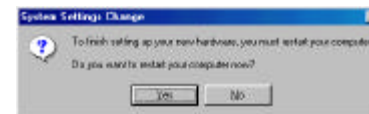
3. Windows found the "**DAVICOM 9102/A PCI Fast Ethernet Adapter**", click "**Next**".



4. Click "**Finish**".



5. Click "**YES**" to restart your computer.



HPD-101

1Mbps HomePNA  
&  
10/100Mbps Ethernet

PCI CARD

QUICK  
INSTALLATION