



# Arcwave's ARCXtend MetroE FX5010 Wireless Plant Extension Solution

## User Guide

P/N: 920-20010-001 Rev. A



100 Albright Way, Suite A  
Los Gatos, CA 95032 USA,  
Phone: 408-558-2300

[www.arcwaveinc.com](http://www.arcwaveinc.com)

© 2006

---

## About this document

---

This guide is designed familiarize you with the ARCXtend MetroE Wireless Plant Extension solution (WPE) solution and to provide basic instructions on the planning, provisioning, verification, monitoring and expansion of MetroE deployments.

It is designed to be used on conjunction with the ARCView Mesh Management Software User Guide which provides detailed information on the

### Note

The software used on the ARCXtend MetroE wireless plant extension solution supports not only point to point and point to multipoint but also mesh network topologies. The ARCView network management software uses the term "mesh" for all configurations. For consistency this guide will also use the term mesh to describe any configuration of two or more MetroE nodes. A node refers to one radio which for the purpose of this guide is one MetroE radio. Again we will use node to refer to an MetroE radio for consistency with ARCView.

### Revision History

ISSUE #	AUTHOR	CHECK OUT	CHECK IN	COMMENTS
1.0	CM		JUNE 7, 2006	FOR BETA RELEASE

### Related Documents

The following documents provide additional information about the ARCXtend HSD WPE solution:

- ARCView Mesh Management Software User Guide
- ARCXtend MetroE MIB (.txt)

### Feedback

We welcome your feedback on Arcwave documentation. This includes feedback on structure, content, accuracy, or completeness of our documents, and any other comments you may have. Please send your comments to [marketing@arcwaveinc.com](mailto:marketing@arcwaveinc.com).

### Trademarks

Arcwave and the Stylized Arcwave Logo, ARCXtend, ARCXtend MetroE, ARCView and ARCViewPro are trademarks of Arcwave. Other product/service names are the property of their owners.

## Notices

The information in this publication is subject to change without notice. Arcwave shall not be liable for technical or editorial errors or omissions nor for any damages resulting from the use of this material.

### U.S. Federal Communication Commission (FCC) Notification

This device complies with part 15 of the U. S. FCC Rules and Regulations and which is subject to the following two conditions: (1) This device may not cause harmful interference, and (2) This device must accept any interference received, including interference that may cause undesired operation.

This equipment has been tested and found to comply with the limits for a Class B digital device, pursuant to Part 15 of the U.S. FCC Rules. These limits are designed to provide reasonable protection against harmful interference in a residential installation. This equipment generates, uses, and can radiate radio-frequency energy and, if not installed and used in accordance with these instructions, may cause harmful interference to radio communications. If this equipment does cause harmful interference to radio or television reception, which can be determined by turning the equipment on and off, the user is encouraged to correct the interference by one or more of the following measures:

Increase the separation between the affected equipment and the unit;

- Connect the affected equipment to a power outlet on a different circuit from that which the receiver is connected to;
- Consult the dealer and/or experienced radio/TV technician for help.

### Part 15, Section 15.21 Warning

Changes or modifications not expressly approved by Arcwave, Inc. could void the user's authority to operate the equipment. FCC IDs Numbers are listed below:

FCC Identifier: PLRFX501000

### RF Safety Warning

To ensure compliance with FCC recommended General Population/Uncontrolled exposure limits the ARCXtend MetroE radio must be installed at a minimum of one foot from areas frequented by the general population.

To ensure compliance with FCC recommended Occupational/Controlled exposure limits, field engineers and technicians should maintain a minimum working distance of six inches, as measured from the front of the radio to the front of their bodies. For working distance inside six inches, RF exposure should be limited to an average of 30 minutes at a time. All Arcwave equipment, however, has been designed to allow installation and maintenance at a range well within FCC RF exposure levels.

---

## **Table of Contents**

---

**The ARCXtend MetroE Wireless Plant Extension Solution 5**

**The ARCXtend MetroE Solutions 10**

**Planning a MetroE Deployment 12**

**ARCView Mesh Management Software for MetroE Nodes 14**

**Installing ARCView 16**

**Using ARCView 18**

**Quick Mesh Check 20**

**Country Code Setting 21**

**Customizing Your Mesh Network 22**

**Configuring Individual Nodes 27**

**Installing Nodes 33**

**Aligning Nodes 37**

**Link Verification 38**

**Retorting Default Settings 44**

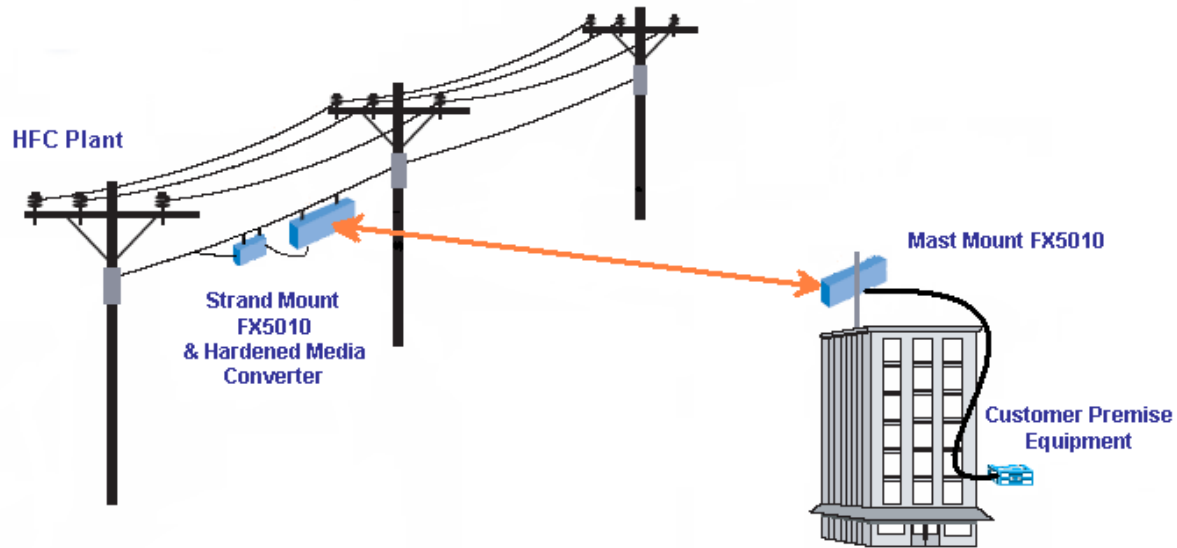
**Appendix A: Arcwave Support 45**

**Appendix B: FX5010 Technical Specification 46**

---

## The ARCXtend MetroE Wireless Plant Extension Solution

---



The ARCXtend MetroE wireless plant extension solution creates a transparent wireless Ethernet bridge between a cable operator's fiber network and small and medium-sized business customers' sites supporting delivery of high value Ethernet services without the delay and expense of a fiber extension.

A MetroE solution consists of a pair of fully integrated outdoor radios, called nodes, which together create a point-to-point wireless link that transparently bridges the fiber network and customer LANs. The MetroE node can be strand; pole or mast mounted and powered using IEEE 802.3af standard Power over Ethernet (POE) or 60 or 90 VAC coaxial cable line-powering. It includes a weatherized RJ-45 Fast Ethernet port for enabling direct, all outdoor connection to aerial fiber plants via hardened media converters or for connecting to standard customer premise equipment including switches, routers, firewalls and network interface devices. The two radios together form a low latency (less than 2 milliseconds one way), high availability point to point wireless link operating in the license-free 5 GHz band with a sustained point-to-point throughput of up to 32 mbps at a range of up to 3 miles and up to 99.999% link availability.

The major elements of the MetroE solution:

### Wireless Interface

The MetroE utilizes a 20 MHz wireless channel located anywhere in the license free spectrum 5725 to 5850 MHz ISM (Industrial, Scientific and Medical) unlicensed band. With so much wireless spectrum and only a single wireless channel, interference-free operation is virtually assured. The FX5010 utilizes orthogonal frequency division multiplexing (OFDM), forward error correction, and adaptive modulation technology to support operation of up to 54Mbps raw data rates with near line-of-site coverage. Near line-of-site coverage capability ensures optimal link performance in real world deployment conditions.

## **Ethernet Bridging Protocol**

The MetroE uses a low-latency; low overhead time division duplexing protocol TDD protocol to achieve a true 32 mbps aggregate Ethernet throughput and 10 mbps symmetric throughput making it an ideal access solution for a typical SMB looking for a lower cost, higher bandwidth alternative to DSL or nxT1 service. It is fully transparent to Ethernet data frames, Layer 2 Control Processing packets and 802.1q Trunking, QinQ (802.1q inside 802.1q), MPLS VPN and UTI/L2TPV3 (encapsulate one Ethernet packet in another Ethernet packet with a tunneling header) traffic providing support for all standard Metro Ethernet Line (ELS) and LAN (E-LAN) services.

## **Security**

The MetroE provide end-to-end traffic encryption using Advanced Encryption Standard at 128 or 256 bits. Access control is provided by MAC address filtering on either an explicit Allow or Deny basis. VLANs, which segment traffic across the links, add yet another layer of security.

## **Physical**

The MetroE is a fully hardened outdoor radio purpose built to meet cable industry physical and environmental specifications ensuring rapid deployment and trouble-free operation. The radio operates over the cable industry standard -40 to 60C outdoor temperature range and is fully waterproof and UV (ultraviolet light) and corrosion resistant. The 60 – 90 VAC line-power connection meets applicable SCTE (Society of Cable Telecommunications Engineers) specifications for F connectors, torque requirements, surge protection and ESD immunity. The power supply, also used in our widely deployed ARCxtend HSD product, is proven compatible with 60 and 90VAC coaxial line powering.

The strands mount bracket, taken from the field proven ARCxtend HSD product and developed with direct input from cable industry engineers, features SCTE compliant mounting hardware and one-person installation and alignment. The mast mount bracket for customer site deployment enables installation using the readily available and low cost microwave and satellite dish mounting kits.

Finally the MetroE has been certified to meet applicable FCC (Federal Communications Commission) radio standards for unlicensed band operation and emissions.

## **Management**

ARCView Mesh Management Software provides real-time monitoring and comprehensive and centralized management of one or more ARCxtend MetroE links. An intuitive graphical user interface affords "point-and-click" control settings for security, traffic prioritization, radio behavior and internetworking.

The MetroE also features SNMP accessible MIBs for equipment, link and Ethernet service monitoring supporting management of commercial service level agreements using existing network and service management systems.

## **Product Features**

Below are descriptions of some of the MetroE wireless mesh network's features.

## Mesh Management Using ARView Software

ARView™ mesh management software provides live monitoring, as well as local and remote management of MetroE wireless mesh networks. The software features an intuitive graphical user interface and provides complete access to all mesh and individual node settings, including security, VLANs, traffic prioritization, radio power controls, and Network Gateway Interconnects. Live monitoring features include mesh and node statistics and a graphical view that uses node icons to indicate active connections. Users can also import graphics of floor plans or maps. The icons for each node can be moved over the graphics to show where they are physically located.

### Security

The MetroE ODU mesh network includes several layers of security, including AES key and WEP encryption.

AES (Advanced Encryption Standard) encryption can be used to protect data exchanged between any two nodes in a wireless mesh. When AES encryption is enabled for a wireless mesh, all payload data leaving the nodes in the mesh is encrypted using 128- or 256-bit keys. The data remains encrypted as it passes through the intermediate nodes and is only decrypted at the end node where it leaves the mesh network. This provides end-to-end security for the customer data passing through the MetroE ODU wireless mesh.

WEP (Wired Equivalent Policy) supports 40/64- and 104/128-bit encryption to protect all traffic on the mesh, including routing and management traffic. This can be used to protect traffic over the wireless links.

For additional security, a proprietary mesh protocol prevents non-MetroE ODU devices from participating on the mesh. Secure network access can also be provided for applications that do not allow Wi-Fi client services by connecting computers to the mesh directly using cables connected to the Ethernet ports on a MetroE ODU node.

### Packet Filtering

MetroE ODU nodes can filter packets based upon the MAC address of the traffic. You can configure each Ethernet port to deny or permit access for traffic coming from or to specific devices (identified by the devices' MAC addresses).

### VLANs

The MetroE ODU mesh network includes support for virtual local area networks (VLANs) to enable traffic to be separated into smaller groups and application-specific LANs. VLANs allow small groups of users to operate within their own private space on the mesh, and they can also improve mesh performance by directing traffic onto specific VLAN routes. The MetroE ODU mesh supports 802.1Q VLAN tagging of packets entering and exiting the mesh.

You can configure each Ethernet port to operate as part of a VLAN. A MetroE ODU wireless mesh can support multiple VLANs. You can assign ports to different VLANs. Only ports belonging to the same VLAN can switch traffic among themselves. You can create up to 16 logically separated VLAN networks within a single mesh. The MetroE ODU mesh also supports VLAN trunks.

## Traffic Prioritization

The MetroE ODU system provides three traffic prioritization levels (Low, Medium, or High) to prioritize traffic on the mesh. This helps ensure that certain types of traffic requiring high throughput or continuous service, such as voice, take precedence over other forms of traffic. Every port on every node on the mesh can be set to any of these three priority levels.

## Network Gateway Interconnects

The MetroE ODU mesh network allows multiple mesh portals for efficient access to external network services, such as the Internet. This capability enables high throughput and redundancy for external services and optimizes the transport of traffic through the mesh. MetroE ODU mesh nodes can also be assigned to specific portal groups (called "Gateway Groups") to further increase the efficiency of each portal. You configure portals by defining Network Gateway Interconnects (NGIs).

Each Gateway Group can support up to 16 NGIs and you can define up to 8 Gateway Groups. Each node on the mesh can have only one Gateway Group interconnect. Gateway groups are not required when connecting to different network domains or if only one NGI is being used.

The NGI feature provides both load balancing and redundancy when accessing various network services. This helps provide better wireless mesh data throughput because it allows packets to enter and exit the wireless mesh at the entry/exit point closest to the packet's destination, thereby conserving wireless bandwidth and reducing the number of hops required to reach the desired destination.

## Radio Settings

MetroE ODU wireless mesh nodes are FCC approved for operation only in the 5.8 GHz band. The selected radio mode is applied to the entire wireless mesh. You can use the ARCVIEW management software to display and modify the radio transmit power level for each node.

## Speed and Duplex Settings

You can configure the Ethernet port for 10 or 100 Mbps speed or for automatic speed negotiation. Network traffic between a MetroE ODU node and devices connected to its Ethernet port travels up to full wire rate (10 or 100 Mbps). The port can also be configured for full- or half-duplex operation. In addition, you can enable and disable individual ports.

The Ethernet ports support auto MDIX, which allows you to use either straight-through or crossover cables to connect the MetroE ODU node to other devices.

## Transmit Power Control

You can display and modify the radio TX power level on a per node basis utilizing the ARCVIEW™ management software. The maximum power (that is, 100%) is a factory-configured value that is unique to each country of operation, each channel of operation, and each antenna configuration, and has been determined to be within an authorized limit. This value cannot be changed. However, using the ARCVIEW software, a mesh administrator can set any node to operate at a reduced percentage of this maximum power (for example, 75%, 50%, or 25%; the default setting is 75%). The administrator can restore the MetroE ODU node to its approved maximum power by setting the power level back to 100%.



Note: Transmit power control adjustments affect the node radio, so care must be exercised when making adjustments on an existing network, as the reduced power level may cause the node to lose connectivity with other mesh nodes.

Note: Adjusting the power incorrectly could have an adverse effect on proper mesh operations.

If you are not sure what the power should be adjusted to, it is best to leave it at its default configuration. If you need additional technical assistance, please contact your Arcwave dealer.

---

## The ARCXtend MetroE Solutions

---

### FX5010-ODU Point-to-Point Solution

The FX5010-ODU is a self-contained weather-protected, strand mountable radio providing a point-to-point wireless Ethernet connection between a fiber plant and a customer Local Area Network. The FX5010-ODU includes an integrated transceiver, 20° directional antenna, 60 to 90 VAC power supply and Power over Ethernet Source (PSE) for powering third-party media converters. It comes in four different configurations based on mounting and powering:

### Configurations

Model	Mounting Bracket	Power over Ethernet
FX5010-ODU-VM-PSE	Mast	Power Sourcing (PSE; delivers power)
FX5010-ODU-VM-PD	Mast	Powered (PD; accepts power)
FX5010-ODU-SM-PSE	Strand	Power Sourcing (PSE; delivers power)
FX5010-ODU-SM-PD	Strand	Powered (PD; accepts power)

### Included Accessories

- FX5010-CD, documentation CD

### Optional Accessories

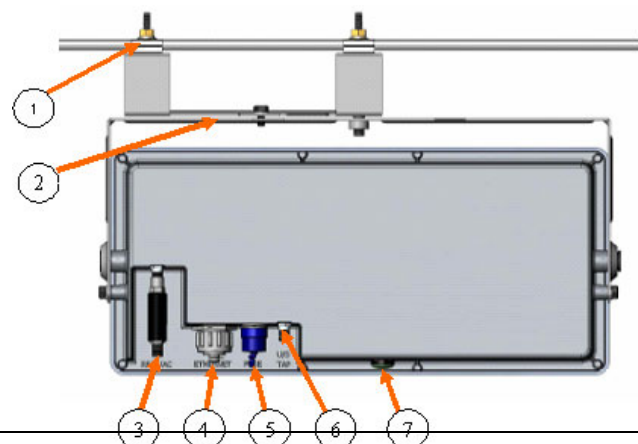
- FX5010-RJ45-1 one meter RJ-45 cable, model number for interconnecting the ODU to hardened media converters marketed by PCT and Aurora
- FX5010-PS-48V 48 VDC Power-Over-Ethernet Injector and Power Supply
- FX5010-SS-CAT5 CAT5 Surge Suppressor
- S3-SM-EXT-4 S3 Hub Style, Strand Mount Bracket with 4" cable clearance, bracket is shipped separately

### Connections

The following illustration shows the rear of the ODU and identifies the connections and strand mount bracket components:

#### (1) Strand Mounting Clamps

Cable industry standard clamps for mounting the hub to the strand cable.



## (2) Strand Mount Alignment Brackets

Mechanically adjustable horizontal and vertical hub alignment brackets for aligning the hub's integrated antenna to the desired coverage area.

## (3) RF W/AC

An AC surge protected SCTE compliant female F-type connector for AC power connection to the cable network. The input line power must be between 50 VAC and 110 VAC with a line frequency from 50 Hz through 60 Hz.

## (4) ETHERNET

A 10/100BaseT IEEE 802.3/802.3u compliant auto-sensing (MDI/MDIX) Ethernet port with a weather-proof RJ-45 connector for all outdoor connection to hardened media converters and for connecting to customer premise equipment.

To a data network the ODU is implemented as a transparent bridge which passes Ethernet frames of up to 1580 bytes. Port based filtering is supported based on IEEE 802.1Q VLAN ID and port based prioritization is supported based on IEEE 8021.p.

The Ethernet also supports operation as an IEEE 802.3af Power over Ethernet (PoE) source (PSE; delivers power) or powered device (PD; accepts power) depending on the configuration using 24 VDC power over Ethernet (PoE) per the table below:

When the ODU is configured as a powered device (PD) it can be powered by a PoE source and when it is configure as a PoE source it can be power PoE powered device such as a hardened media converter. When the ODU is configured as powered device (PD) AC power is not required and should not be used.

Pin	Function	US T-568A
1	Ethernet Tx+	green-white
2	Ethernet Tx-	green
3	Ethernet Rx+	orange-white
4	PoE (+)	blue
5	PoE (+)	blue -white
6	Ethernet Rx-	orange
7	PoE (-)	brown-white
8	PoE (-)	brown

## (5) FUSE

An SCTE compliant replaceable 1 ampere fuse providing over current protection for the RF W/AC port.

## (6) U/S Tap

Not Used.

## (7) LED

Green/amber weather proof status LED indicating:

Amber Solid	Status of unit is up
Green Solid	Wireless link is established

## (8) Ground Lug

The ground lug terminal is for grounding the ODU per the appropriate electrical code in the country of deployment.

---

## Planning a MetroE Deployment

---

Wireless link planning is essential to the success of any microwave installation and is highly recommended before attempting to install the equipment. In this section we will describe the elements of the MetroE that are relevant to link planning. If the reader is unfamiliar with microwave link planning he/she is strongly advised to seek qualified assistance or take a suitable microwave link planning training class.

Personnel installing the equipment must be familiar with fiber splicing, microwave and Ethernet equipment solution installation and troubleshooting techniques.

### Frequency Planning

The MetroE operates over the 5.725 to 5.850 GHz (defined as the ISM band) utilizing one 20 MHz wide channel. The band supports (5) non-overlapping channels and setting of the channel is done manually. The MetroE link can be configured to use those channels that have been determined to be free of interference from other users during the link planning process.

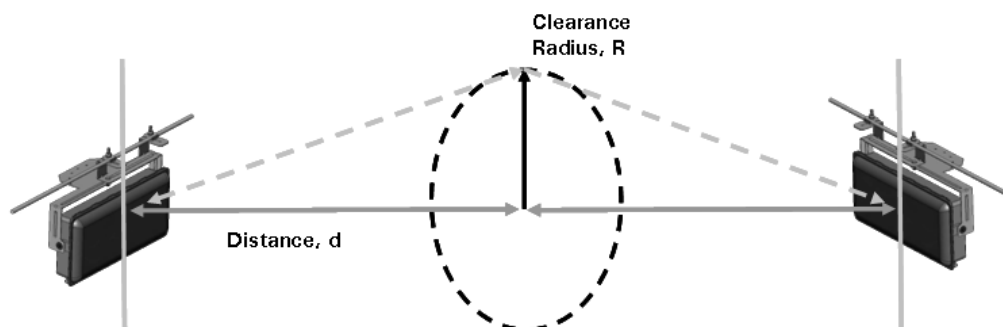
You are looking to find and use channels with signal strengths of -90 dBm or lower. If it is not possible to find a completely clear channel, you can set the RSSI Threshold setting on the Advanced Screen under Mesh Configuration, ADVANCED, screen) to just above the interfering signal strength. The Hysteresis Window, which determines the amount signal must come up past above the RSSI Threshold, should be set to 3 dBm.

### Distance

The MetroE FX5010-ODU can deliver full throughput at a range of 3 miles with 99.999% link availability in a typical urban strand mount deployment. Link availability is calculated using the ITU P-530 model which accounts for slow fading due to terrain and climate conditions and assuming a near-line-of-site path with a multipath loss of 10 db. The Link Availability calculation does not include potential downtime from transient interference or equipment failure.

### Path Profile

Optimal performance is ensured with a line of sight path between the two FX5010-ODUs. This is defined as a path that is free of obstructions in the Fresnel zone. Obstructions can be trees, buildings, street signs, etc. An accepted rule of thumb is that LOS conditions exist when there are no physical obstructions within 60% of the 1<sup>st</sup> Fresnel zone (obstruction free zone). The Fresnel Zone clearance is determined by the distance between the two ODU's as shown in the following illustration and table.



Radius, R	20 feet*	16 feet	11 feet	10 feet	8 feet	6 feet
Distance, d	3 miles	2 miles	1 mile	¾ mile	½ mile	¼ mile

\* Represent practical limit from strand mount 18 feet above the ground.

### Link Planning Tools

Simple range calculation software is available from Arcwave for calculating operating distances for specific applications and more complex link modeling software is available from third-parties for very accurate link planning and using topographical maps of the area of interest. Contact Arcwave Technical Support for additional information.

### Locating the MetroE

The MetroE can typically be located anywhere along the HFC plant that provides a suitable wireless path to the customer site. The hardened media converter is typically co-located with the MetroE and connected to it using the 1 meter interconnect cable, FX5010-RJ45-1. With outdoor rated CAT5e you can go up to 100 meters (327 feet) even when using the MetroE in power over Ethernet power sourcing (PSE) or powered device (PD) mode. The hardened media converter can typically be located anywhere from 10 to 40 km with 1310 nm and 100 km with CWDM (1430 to 1610) wavelengths from the head end.

---

## **ARCView Mesh Management Software for MetroE Nodes**

---

The basic ARCExtend mesh network can be installed and operated without external network management or intervention. However, because wireless network connections are invisible, Arcwave provides the ARCView software to provide a graphical view of the mesh topology. ARCView enables users to monitor the network connections and performance, and to customize individual nodes or the entire network.

ARCView can be downloaded from the Arcwave website ([www.arcwave.com/support.html](http://www.arcwave.com/support.html)) and installed on a workstation connected with an operating system such as Windows, FreeBSD, or Linux. The workstation must be connected to the mesh and requires Java runtime software, which you can download.

The workstation can connect directly to any MetroE node on the mesh using a standard Ethernet cable with an RJ-45 connector. After the user fills in the login information on the ARCView opening screen, the software connects to the mesh and begins operation.

ARCView has a graphical interface for simple and intuitive operation. The following are some of the basic features and functions of the software.

### **Mesh, Inventory, Performance, and Current Faults Views**

You can view the mesh network in different ways. The Mesh view provides a graphical representation of the mesh with additional information, including graphics that show the actual interconnections between all of the nodes on the mesh. The Mesh view remains displayed when you select one of the different view options described below. The Inventory view lists the MetroE nodes on the mesh. It also shows the status, location, and other information for each node. The Performance view shows the uptime statistics and traffic information for each node. The Current Faults view shows the status of the nodes in the mesh, identifies the number of faults detected for each node, and shows the available Ethernet ports on each node.

### **Mesh Setup**

You can review and change all of the mesh-wide settings using ARCView, including network, security, wireless (radio), and user account settings.

### **Node Management**

ARCView also provides functions to manage individual MetroE nodes on the mesh. These allow you to change the node's name, location information, enable or disable Ethernet ports, and view the node's mesh connections. You can also view details about a selected node.

You can easily add new nodes to a mesh by exporting the configuration from an existing node on the mesh and importing it into new nodes.

### **Easy Updates**

Periodically Arcwave will post updates to the MetroE firmware that add improvements or new features. With ARCView, you can update all of the MetroE nodes on your mesh in a single operation.

## **Monitoring the Mesh**

The Monitor feature of the software allows you to view network statistics to determine if there are any problems with the communications between various nodes on the mesh.

For complete information on ARCVIEW mesh management features and more detailed instructions on its operation, install the software from the CD provided in the MetroE package or download the latest ARCVIEW User Guide, available at [www.arcwaveinc.com/customer/support\\_extranet.html](http://www.arcwaveinc.com/customer/support_extranet.html).

---

## Installing ARCVIEW

---

The ARCVIEW Mesh Management Software is used to configure and manage a MetroE mesh deployment. It should be installed on a workstation that will be connected to the MetroE mesh as follows:

1. Install the software from the Arcwave website or from the CD-ROM included in the package.
2. Set the workstation's IP address.
3. Connect the workstation to one MetroE node in the mesh.

### Workstation Requirements

- Operating systems supported: Windows 2000/XP, Linux, Solaris, and FreeBSD.
- Java 2 Platform, Standard Edition, version 1.5 or later. This is available for downloading from [www.java.com/](http://www.java.com/)
- 1.0 GHz, 100% Pentium 4-compatible processor or later
- 256 MB of Random Access Memory (RAM)
- 50 MB of hard disk drive space
- 10/100 RJ45 Ethernet network interface

### Install the Software

You can install the ARCVIEW software from the CD-ROM disc included in the product package or download the latest version from the Arcwave website. The instructions below describe how to install the software onto a workstation.

1. Insert the installation CD into your CD drive
2. A Java installer applet will prompt you through the process. Follow the instructions to download the software and save it on your workstation.
3. When prompted to select an installer, select the appropriate installer. If you are using Windows, click on the Start Installer for Windows... button. If you are using a different operating system, download the appropriate installer and follow the instructions provided at the bottom of this screen. When a dialog box appears to ask where you want to save the software, specify the desired location on your workstation and click on the Save button.
4. When the Installation of ARCVIEW screen is displayed, click on the Next button.

The license agreement is displayed.



5. Select the “I accept the terms of this license agreement button” and then click on the Next button to continue. A screen showing the default location for the ARCVIEW software is displayed.
6. To enter a different installation location, type in the path to the desired location or click on the Browse button to select a location.
7. Click on the Next button to install the ARCVIEW software in the location displayed on screen. A screen showing the progress of the installation is displayed.
8. When the installation is finished, click on the Next button. A screen showing the available shortcut options is displayed.
9. Select the desired shortcut options and then click on the Next button. An installation has completed message is displayed.
10. Click on the Done button. This completes the ARCVIEW software installation.

## Set the IP Address for the ARCVIEW Workstation

### For Windows XP

1. Click on the **Start** button.
2. Click on Control Panel.
3. Double-click on the **Network Connections** icon.
4. Double-click on the **Local Area Connection** icon for the network adapter that will be used to connect to the mesh network.
5. Click on the **Properties** button under the General tab.
6. Click once on **Internet Protocol (TCP/IP)** to highlight it, and then click on the Properties button.
7. Select “**Use the following IP address**” and enter the following information:
  - IP address: 192.168.224.10
  - Subnet mask: 255.255.255.0
8. Click **OK** to finish.
9. Close the other dialog boxes.

### For Other Operating Systems

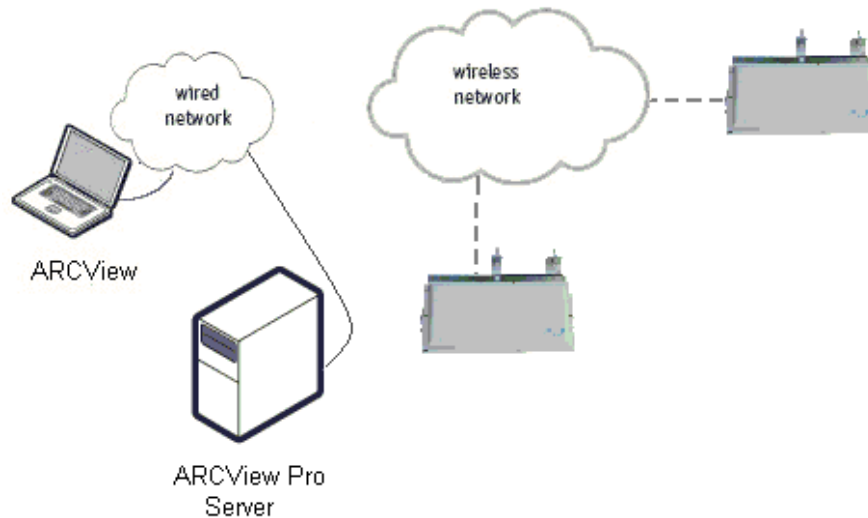
1. Refer to the documentation provided with your operating system for instructions on setting up IP addresses and subnet masks.
2. Set up your workstation with the following network parameters:
  - IP address: 192.168.224.10
  - Subnet mask: 255.255.255.0

---

## Using ARCView

---

The initial mesh setup should occur prior to installation. To complete initial setup connect one MetroE node to a wired connection with access to ARCView and place the other node within wireless range as show in the figure below.



Verify that the status LED on each MetroE node glows Amber indicating it's powered and then green indicating it has achieved a valid link status.

### Launch ARCView Management Software

You are now ready to check your mesh configuration using the ARCView mesh management software. The steps below describe how to launch the ARCView software under Windows. Your operating system may have a different procedure for launching applications. If necessary, refer to your operating system's documentation for instructions on how to launch applications.

1. Install the ARCView mesh management software as described in the ARCView User Guide.
2. Configure your TCP/IP settings to:
  - IP address: 192.168.224.10
  - Subnet mask: 255.255.255.0
  - Gateway is not used
3. From the Windows Desktop, click on the Start button.
4. Click on All Programs and select ARCView. The Login screen will appear.
5. Enter the following information to log into the mesh network:
  - Mesh IP address: 192.168.224.150
  - Username: admin

- Password: arcwave
6. Click on Login.
  7. Wait for your computer to connect to the mesh. This may take a few seconds to several minutes, depending on how many nodes are in the mesh. You should see a screen with a list of all of the MetroE ODI units on the mesh.
  8. Ensure the MetroE nodes are visible in the Network View or the Inventory screen. The node connected to the ARCVIEW is indicated with a small "H".

The screenshot displays the Firetide software interface. The top menu includes 'File', 'Monitor', 'Verify', 'Options', and 'Help'. The main window shows a 'Network View' for 'Mesh 53 (Plans2Reality)'. The network diagram features several nodes: Shop3101, DiningRoom3103, PrinterRoom3103, MediaRoom3101, and ComputerRoom3103. These nodes are interconnected with dashed lines, forming a mesh. The background shows a floor plan with room names like 'M. Osbourne', 'J. Dias', 'C. Montgomery', 'Guest', 'E. Gray', 'P. Higgins', 'N. Knapp', and '(vacant)'. Below the network view is an 'Inventory' tab with a table of nodes.

HotPort Name	Serial Number	Status	Location String	Software Version	Model	Ethernet MAC A...	Radio MAC Addr...
ComputerRoom3103	A03110500000...	✓		3.1.2.0	HOTPORT 31...	00:12:0E:00:D0:...	00:0B:68:34:DB:...
DiningRoom3103	A06240500000...	✓		3.1.1.9	HOTPORT 31...	00:12:0E:11:1C:...	00:0B:68:36:1E:...
Shop3101	A05270502000...	✓		3.1.1.9	HOTPORT 31...	00:12:0E:00:D2:...	00:0B:68:34:89:...
PrinterRoom3103	A06240500000...	✓		3.1.1.9	HOTPORT 31...	00:12:0E:11:1C:...	00:0B:68:36:0D:...
MediaRoom3101	a05270502000...	✓		3.1.1.9	HOTPORT 31...	00:12:0e:00:d2:20	00:0b:6b:34:f0:57

---

## Quick Mesh Check

---

The first step after logging into a mesh for the first time is to ensure all of your MetroE nodes are visible to ARCView. This can be verified on the Mesh diagram, or in the Inventory screen. In particular, check the columns of information described below to ensure that all nodes are included. (If the Inventory screen is not displayed, click on the Inventory tab at the bottom of the screen.)

There are a number of reasons why the MetroE node may not be visible:

The MetroE node is not powered.

Ensure that the node is powered; the status LED should turn amber in 70-80 seconds indicating the unit is up and then green indicating a wireless link has been established with another unit.

The MetroE node is out of radio range.

To test this, temporarily move the MetroE node closer to one of the MetroE nodes that appear on the ARCView screen. If the node appears on the screen after doing this (usually within 30 seconds), it was probably located too far from the rest of the mesh. You can either relocate it closer to the rest of the mesh or add one or more additional MetroE nodes between the mesh and the desired location. You can use a third-party software tool to help troubleshoot node-connection problems.

The MetroE node is set to a different RF channel or mode.

All nodes must have identical radio settings.

The MetroE node has encryption enabled.

All nodes must be running the same encryption type and key.

The MetroE node has a different password.

All nodes must have the same password; the admin and guest node accounts are what ARCView Pro uses to log into and control each node.

The MetroE node has been factory-reset.

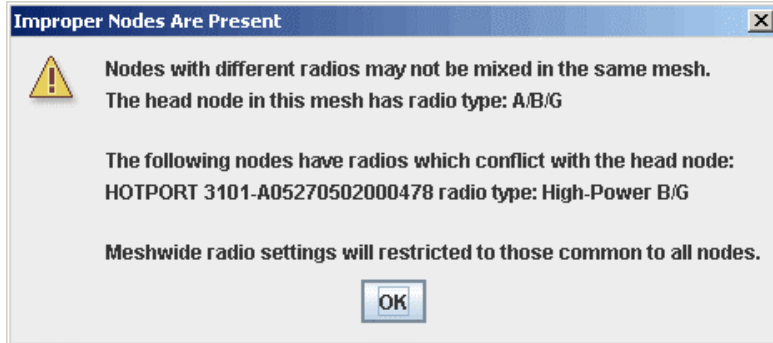
If the nodes have been reset, it will not join an existing configured mesh. The easiest way to fix this is to save the configuration from an existing node, then connect to the factory-reset node via Ethernet and upload the configuration file.

---

## Country Code Setting

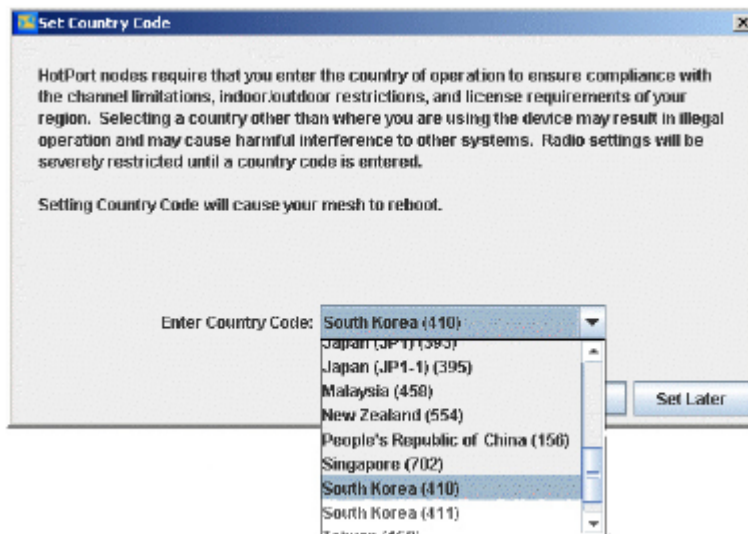
---

If your mesh has radios which require a country code setting, and the country code has not yet been set, the Set Country Code message will appear.



The Country Code settings allow operation at the maximum legal limit for that country; if it is not set, the transmitters operate at very low power and range is limited. Until the Country code is set, the default radio mode is 5.8 GHz DSSS, and the default radio channel is 161.

1. Make sure all radios are visible on the mesh.
2. Select the proper Country Code from the drop down list. Note that some countries have several codes from which to choose.
3. Click the Set Country Code Now button to set the Country Code for all of the mesh radios. If you click Set Later, the "Set Country Code" message will reappear later and the mesh will continue to operate with severe limitations until a Country Code is set.



---

## Customizing Your Mesh Network

---

There are several mesh parameters which must be specified for correct mesh operation. All MetroE nodes on any given mesh must share the following properties:

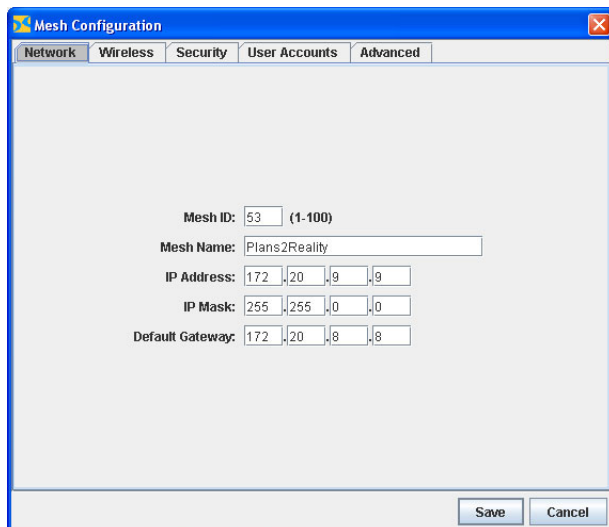
- IP Address
- ESSID
- Radio channel
- Encryption type and key
- Login and password

Moreover, any node which has the same settings as other nodes will join that mesh. Thus, if you leave the default settings unchanged, any MetroE node can automatically join your mesh. This can cause problems. Arcwave recommends that you change the ESSID and password at a minimum and we recommend you enable encryption as well.

### Mesh Configuration

The mesh network parameters are configured using the Configure Mesh dialogue box. To access the Configure Mesh dialogue box, click on the File menu and select Configure Mesh.

### Network Settings



The screenshot shows the 'Mesh Configuration' dialog box with the 'Network' tab selected. The dialog has a title bar with a close button (X) and a menu bar with 'Network', 'Wireless', 'Security', 'User Accounts', and 'Advanced'. The main area contains the following fields:

- Mesh ID: 53 (1-100)
- Mesh Name: Plans2Reality
- IP Address: 172.20.9.9
- IP Mask: 255.255.0.0
- Default Gateway: 172.20.8.8

At the bottom right, there are 'Save' and 'Cancel' buttons.

To set the Mesh ID number, Mesh Name and IP address of the Mesh to be used for network management click on the Network Tab. The default address assigned by Arcwave is 192.168.224.150.

After entering the new values, click on Save to apply. A confirmation dialogue box will appear.

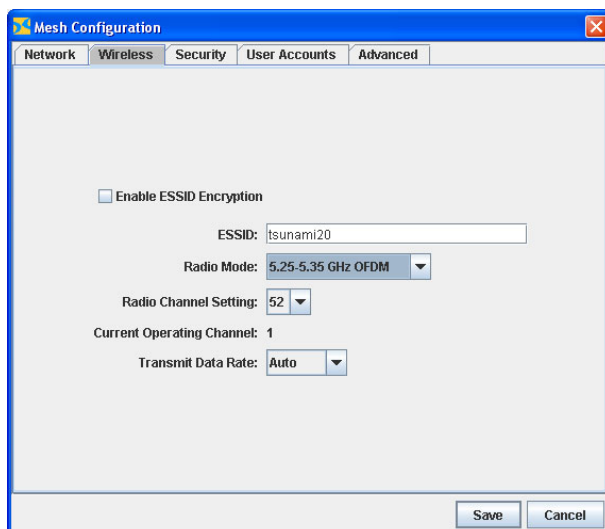
If want to save your new settings and reboot the mesh, click on Yes. Changing the login settings will cause the ARCVIEW software to restart. This may interrupt all mesh operation for approximately one minute until the new settings are loaded into all of the MetroE nodes and all

units are restarted. Otherwise click on No and then on Cancel to return to the previous settings.

## Wireless Settings

To set the Extended Service Set Identifier (ESSID), Radio mode, and Radio Channel setting click on the Wireless Tab.

- The default ESSID is METROE\_MESH. You should change it to a more descriptive name.
- The Radio Mode is set to 5.725 to 5.850 GHz OFDM. This is the only radio mode FCC approved for operation in the U.S..
- Radio Channel Setting should be set to the best available channel which is generally defined as the channel with the least amount of interference as determined during the site survey.
- Current Operating Channel displays the channel number.
- Transmit Data Rate should be set to the lowest data rate that meets the service level agreement (SLA) requirements. In most deployments this will be 54 mbps. Note that the data rates are raw data rates and actual data rates.

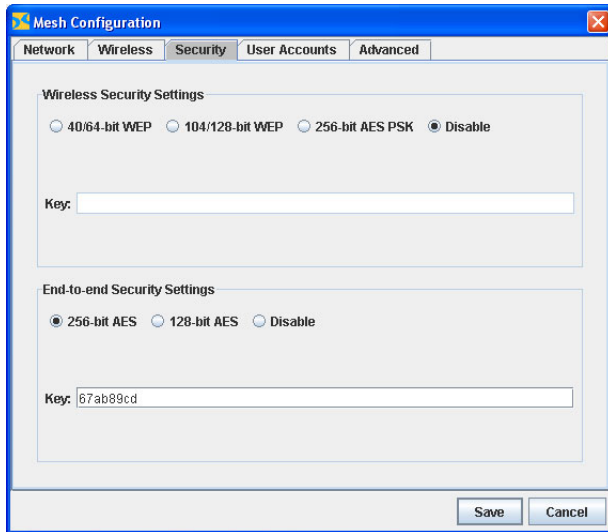


After entering the new values, click on Save to apply.

## Security Settings

Set radio security to WEP, AES or no encryption. Note that the use of WEP or AES does not slow throughput. Encryption is disabled by default.

- If you select 104/128-bit WEP, enter a 26 hexadecimal character key.
- If you select 40/64-bit WPE, enter a 10 hexadecimal character key.
- If you select 256-bit WAP, enter a 64 hexadecimal character key.
- If you select 128-bit WAP, enter a 32hexadecimal character key.

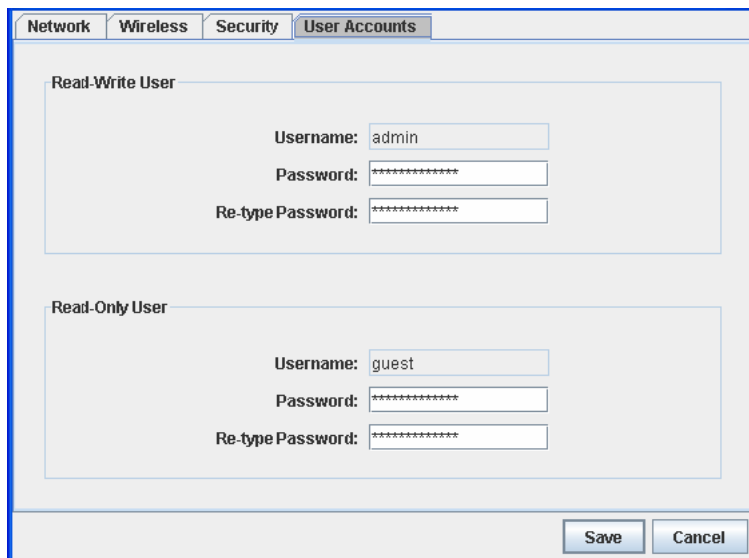


After entering the new values, click on Save to finish.

## User Accounts

Set the Usernames and Passwords for Read-Write User and Read-Only User Access.

You can set up two types of access for ARCVIEW users: administrator ("admin" or "Read Write User") or guest (or "Read Only User") access. Admins can view and modify (read and write) the mesh configuration, guests can only view the information (read-only). To set up an admin, enter the user's account information in the Read-Write User fields. To set up a guest, enter the user's account information in the Read-Only User fields. The password can be up to 15 characters.



After entering the new values, click on Save to finish.



## Advanced Settings

### Multi-hop optimization

The multi-hop optimization option increases the overall throughput of the mesh by reducing the amount of contention between radios that are separated by multiple hops. Normally this option should be enabled since most mesh networks will have multiple hops between radios. However, you should disable this mode if you have a fully meshed scenario where all nodes connect directly to every radio with a single hop.

For point to point or point to multipoint network configurations this mode should be disabled.

### RSSI Threshold

The RSSI Threshold allows you to set the quality threshold for wireless links. Any links that drop below the threshold will not be used for routing traffic. For the routing ability of the link to be restored, the RSSI must achieve the Threshold setting PLUS the Hysteresis Window setting. For example if the RSSI Threshold is -80 dBm and the Hysteresis Window is 3 dBm, routing over the link will not be restored until its RSSI is -77 (-80 dBm plus 3 dBm).

When a clear wireless channel cannot be found, the RSSI Threshold can be used to distinguish between relatively weak interfering signal and the desired signal by setting the RSSI Threshold value just above the interfering signal strength.

### Extended Range

Just like conventional Ethernet, the Arcwave mesh network adheres to careful timing rules regarding when a radio can, and cannot, talk. These rules minimize collisions and maximize throughput. The default timing parameters set by Arcwave provide optimum performance for most applications where radios are fairly close. However, networks which use high-gain directional antennas will benefit from having the timing parameters optimized for the longer propagation time.

If your mesh has one or more links which exceed approximately ½ mile, use the appropriate extended range setting.

### Wireless Class of Service

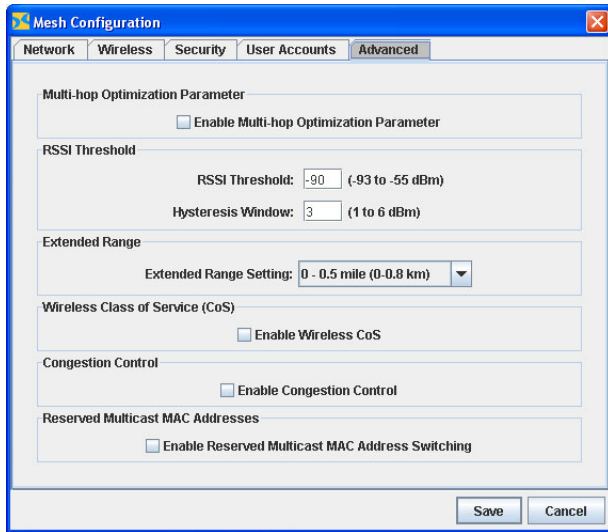
Should be set to "Disable".

### Congestion Control

Should be set to "Disable".

### Reserved Multicast MAC Addresses

Should be set to "Disable".

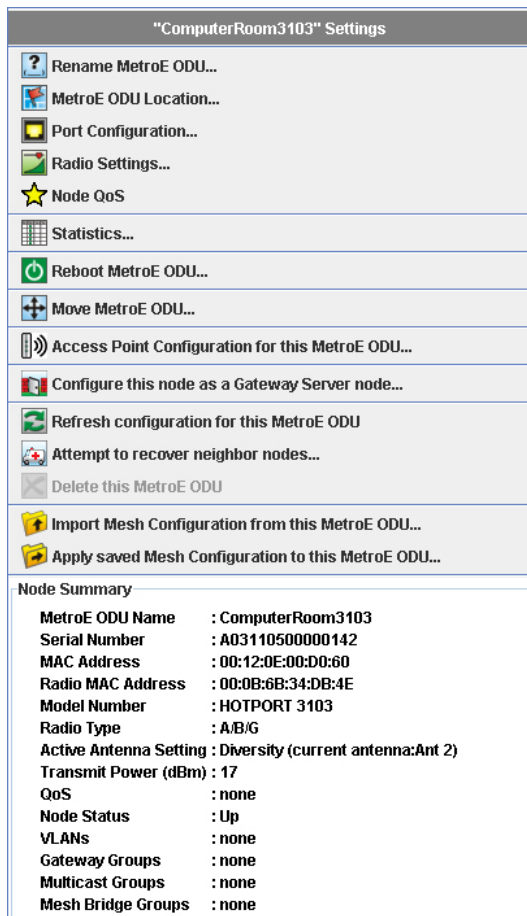


After entering the new values, click on Save to finish.

## Configuring Individual Nodes

Individual nodes can be configured as follows:

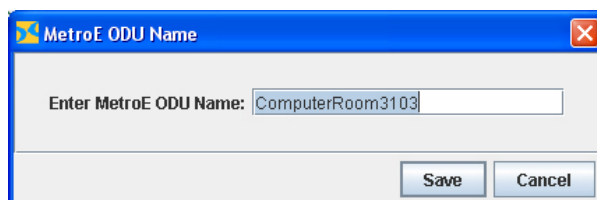
4. On the mesh diagram, right-click on the icon of the MetroE node you want to reconfigure. A pop-up menu appears.
5. Select the option you want or click on a blank portion of the mesh to hide the menu.



## Rename the MetroE Node

You can change the factory default node name to something more meaningful:

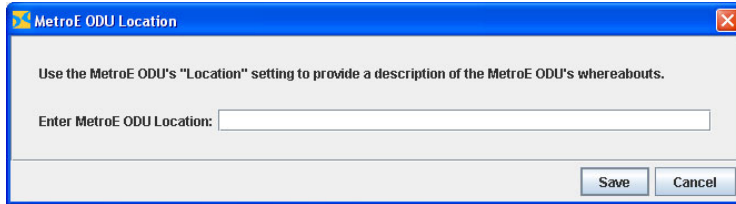
1. In the mesh view, right-click on the MetroE node icon whose name you want to change. A pop-up menu appears.
2. Select Rename MetroE. A dialog box appears.



3. Enter a new name (up to 32 characters long) and click on the Save button.
4. Repeat the above steps for all of the ARCXtend MetroE radios that you want to rename.

## MetroE Location

Use this option to enter any unique identifying information about the MetroE node, such as its location, a contact person's phone number, and so on. Enter the Metro



## Port Configuration

You can configure the Ethernet port on each MetroE node. The screen used to configure ports is divided into sections. Each port on a radio has its own section.

### Enabling and Disabling Ports

The MetroE FX5010 has only one accessible port and it is Port 4. Ports 1, 2 and 3 should be set to "Disable" and Port 4 should be to "Enable".

### Class of Service

Since the MetroE FC5010 as only one port, this feature is not used.

You can assign priority settings to specific Ethernet ports to configure the priority levels of these ports/services. Each port can be assigned a priority of Low, Medium, or High. The default priority of each port is Low. The priority property is propagated throughout the mesh. In other words, if a packet exiting from a port is assigned High priority; all other radios on the mesh treat the packet with a High priority.

This feature is useful for assigning priorities to ports associated with certain applications. For example, if a certain port is used for Voice over IP or other traffic requiring a low latency, you might want to assign the port a High priority.

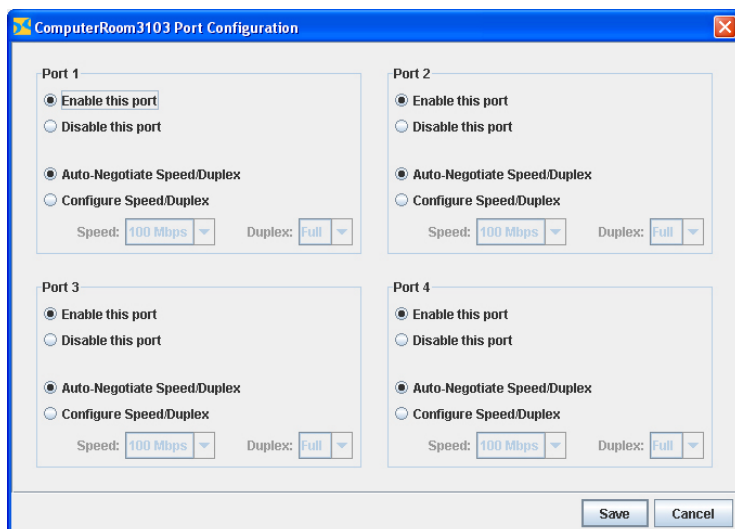
Select the desired priority for a port by clicking on the Priority drop-down menu.

### Speed/Duplex

You can configure each Ethernet port for 10 or 100 Mbps speed or for automatic speed negotiation. Each port can also be configured for full- or half-duplex operation.

To configure a port for auto-negotiation of speed and duplex settings, select Auto-Negotiate Speed/Duplex.

To configure a port for a specific speed or duplex setting, select Configure Speed/Duplex. To select a specific speed, click on the Speed drop-down menu. To select a specific duplex option (Half or Full), click on the Duplex drop-down menu.



Click on the Save button after all port settings have been properly configured.

## Configuring Packet Filters (MAC Filters)

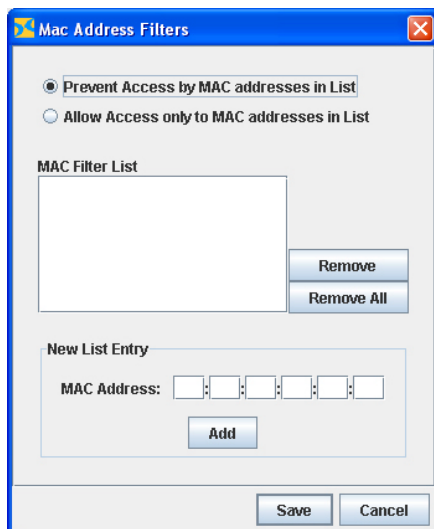
MetroE nodes can filter packets based upon the MAC (Media Access Control) address (also called “physical address”) of the device sending the packets. A MAC address is a 48-bit number represented by 12 hexadecimal digits that uniquely identifies the manufacturer and the device. On Arcwave ARCXtend MetroE radios, each wired Ethernet port and the radio port has a MAC address.

You can configure specific Ethernet ports to either deny or permit access to the mesh for traffic coming from specific devices (identified by the devices’ MAC addresses). You cannot both deny and allow access to specific MAC addresses. The number of MAC addresses you can filter is limited only by the radio’s available memory. By default, packet filtering is turned off.

**WARNING:** Use of the ‘Allow’ MAC address filter can cut off management access to the MetroE mesh. The ‘Allow’ function only permits explicitly identified MAC addresses to pass the radio. If the MAC address of the ARCView Pro Server host machine is not included, access is denied. Many enterprise networks use Ethernet switches; if the MAC address of the switch port connected to the radio is not included, access is denied. If the wired connection is moved from one port to another, access will be denied.

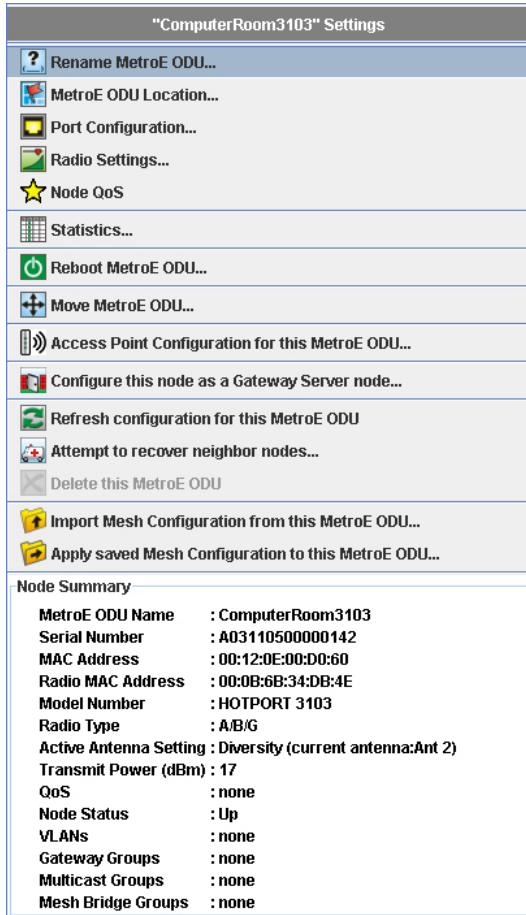
1. Click on the File menu and select MAC Filters. A dialog box appears.
2. To prevent access from specified devices (“deny”), select Prevent Access by MAC addresses in List; to allow access from only specified devices (“permit”), select Allow Access only to MAC addresses in List.
3. Type in the MAC address for the device you want to either prevent or allow access to the wireless mesh in the MAC address fields. Click on the Add button. The specified MAC address appears in the MAC Filter List box.
4. Repeat the above step to enter additional MAC addresses.
5. To delete a one or more MAC addresses from the list, select the MAC addresses you want to delete and click on the Remove button; to remove all MAC addresses from the list, click on the Remove All button.
6. Click on the Save button when you’ve finished defining MAC addresses.

**Note:** To switch from denying access to specified MAC addresses to allowing access to specific MAC addresses (or vice versa), delete all the existing MAC addresses, and save your changes. Then select the MAC Filters command again, select the other operation (for example, if you previously allowed access, select the prevent access option), add the new MAC addresses, and then save your changes.

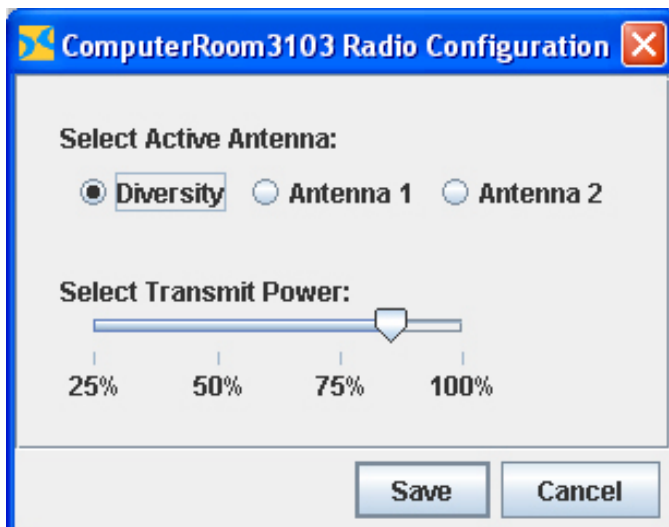


## Select Transmit Power Level

To change the transmit power level of a given node, right click on that node. This will bring up the following Node Summary dialogue box.



Left click Radio Settings...



You can change the transmit power of the radio to 25%, 50%, 75%, or 100% of the approved maximum output power. Use the table below to determine the % attenuation conversion. Drag the slider to select the desired power level and then click on the Save button.

TX Power Level	TX Attenuation	MetroE Node EIRP
100%	0 dB	= 20 dBm TX Power + 17 dB Antenna Gain = 37 dBm
90%	2	36
85%	3	35
75%	5	33
70%	6	32
60%	8	30
55%	9	29
50%	10	28
40%	12	26
30%	14	24
25%	16	22

The transmit power should be set to 90% under normal circumstances.

### Setting Active Antenna

The active antenna must be set to 1.



---

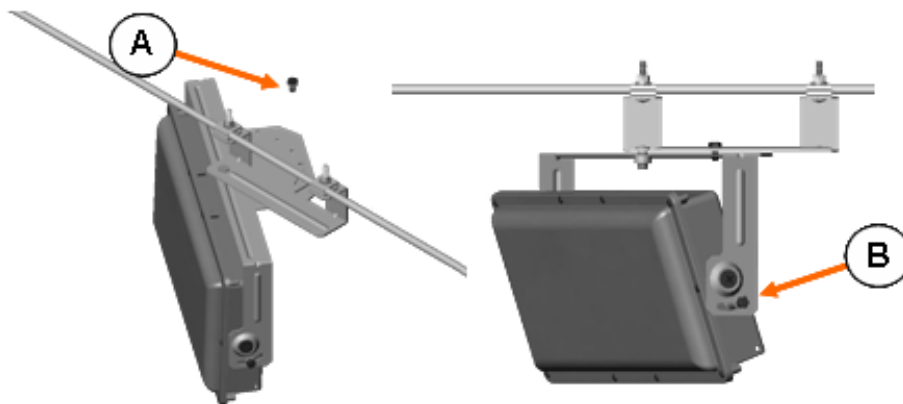
## Installing Nodes

---

### Strand Mount Bracket Installation

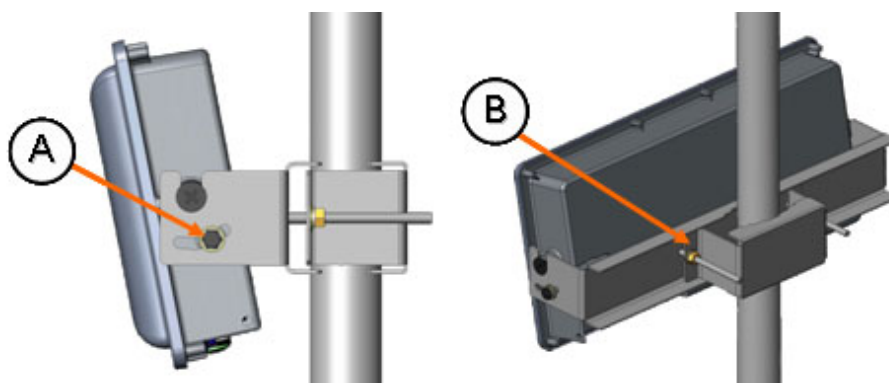
The strand mounted MetroE is designed for installation directly onto standard strand wire and comes with the bracket pre-installed onto the unit. A 7/16" wrench is the only tool required for mounting and aligning the hub.

Attach the bracket to the messenger strand with the two hanger bolts. Position the MetroE's antenna (located behind the radome) to the azimuth and elevation determined in the wireless link planning process. The azimuth position is adjusted by placing bolt A in the appropriate location on the azimuth alignment bracket and the elevation is adjusted by loosening bolts B and rotating the MetroE face up or down and tightening bolts B at both ends.



### Mast Mount Bracket Installation

The mast mounted MetroE is designed for installation directly onto a mounting pipe with of 1-1/2" 4" in diameter and comes with the bracket pre-installed onto the ODU. A 7/16" wrench is the only tool required for mounting and aligning the hub. The MetroE and mounting pipe require a minimum of 12 inches clearance on all sides for optimal performance.



To install and align the MetroE:

- Loosen the two mounting bolts, B, and slide the bracket over the mounting pipe. Position the MetroE antenna (located behind the radome) to the azimuth position determined in the wireless link planning process and snug the mounting bolts, B.
- Loosen the two alignment bolts, A, position the MetroE antenna to the elevation determined in the wireless link planning process and snug the alignment bolts, A.

## Grounding the MetroE

The MetroE must be properly grounded per section 810 of the National Electrical Code, ANSI/NFPA No. 70-1984, Section 54 of the Canadian Electrical Code or the applicable electrical code in the country of deployment. The MetroE includes a ground lug for this purpose.

## Powering the MetroE

### Powering the MetroE with AC Line Power

To power the MetroE using the AC line powering from the coaxial cable plant:

- Install a CATV power extracting tap suitable for your plant and the ODU powering requirements. The hub draws 32 watts maximum and can accept 50 Vac and 110 Vac.
- Connect the tap to the RF W/AC F-type connector on the ODU.
- The LED on the ODU should glow solid amber if the ODU is powered.

### Powering the MetroE ODU with DC Power over Ethernet

To MetroE can be powered using a 20 to 48 VDC (+ or -) IEEE 802.3af compliant power over Ethernet source (PSE). The PSE could be the hardened media converter on the network side or a Power-Over-Ethernet Injector and Power Supply on the customer site side.

- Make sure the MetroE is configured as power over Ethernet (PD; powered device) unit. The model number on the MetroE will indicate –PD.
- Make sure that the voltage drop across the planned length of CAT5 cable is acceptable. The typical resistance of a CA5 cable is approximately 3 ohms per 250 feet. The MetroE E requires +24 to – 48 VDC and draws a maximum of 20 Watts.
- Install a CAT5 Surge Suppressor, FX5010-SS-CAT, between the PSE and the MetroE to protect the PSE and the customer premise equipment from power surges due to lightning.
- Connect the CAT5 cable connected to the PSE to the weatherproof RJ-45 port on the MetroE.
- The LED on the MetroE should glow solid amber if the ODU is powered.

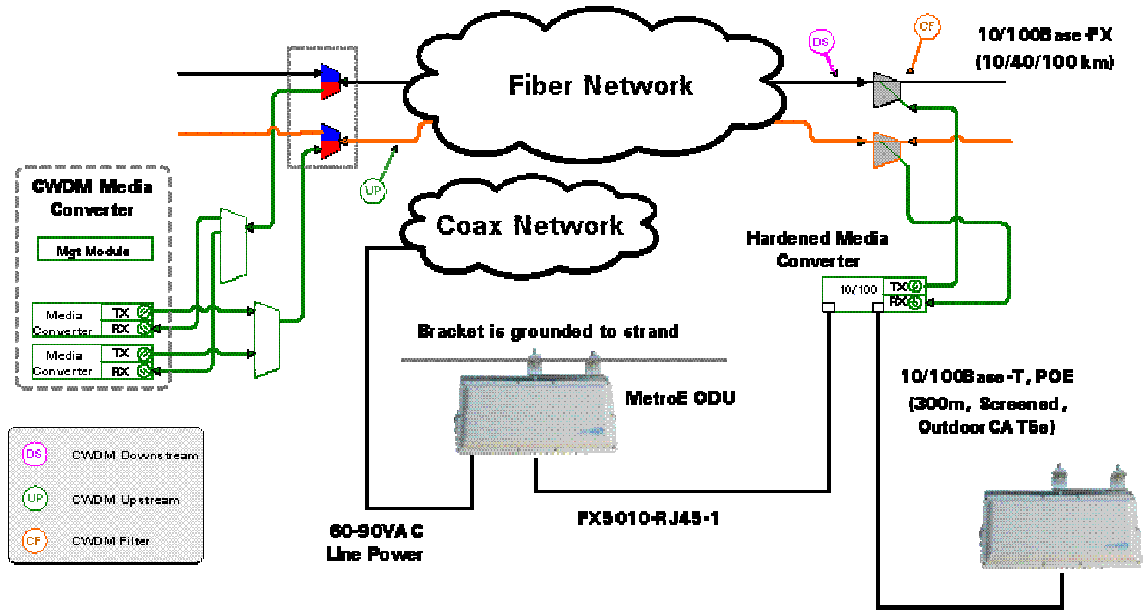
## Connecting Ethernet Devices

One Ethernet device can connect to the MetroE via the weather proof RJ-45 port. The MetroE accepts a Molex P/N 84700-0002 Industrial Ethernet Plug.



## Strand Mount Deployment Diagram and Material List

The diagram below depicts a typical network side strand mount deployment using CWDM (Coarse Wave Division Multiplexing) Fast Ethernet media converter to connect to the fiber network. The media converter provides power to the MetroE node.

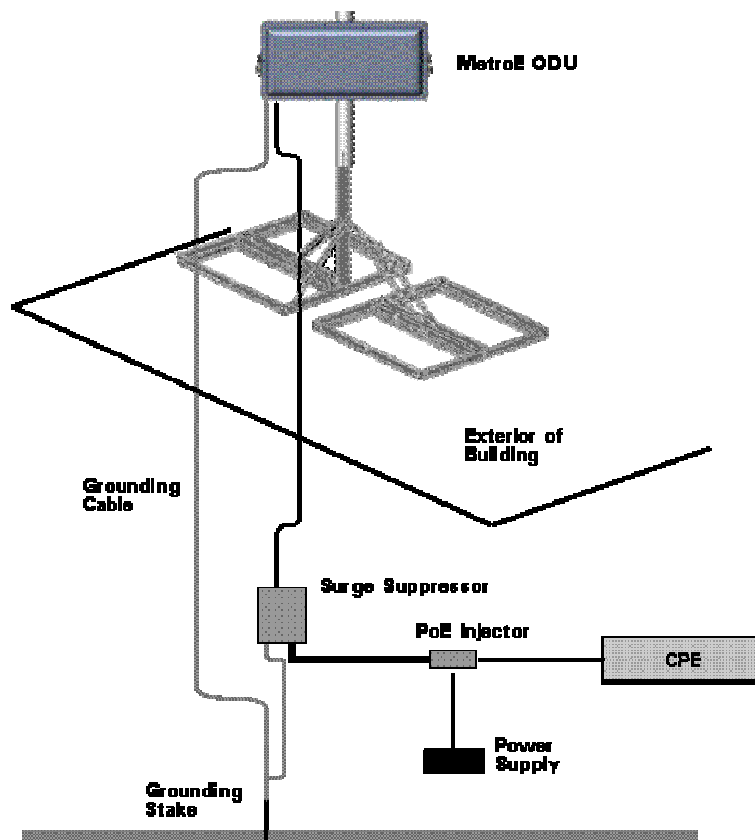


The required components are:

- Strand Mount, PoE Powered Device ARCxtend MetroE WPE ODU– Arcwave Model FX5010-ODU-SM-PD
- CWDM Fast Ethernet Media Converter
  - PCT Model THC or THP2312BTFC-Czz, where zz is the CWDM channel. The THC and THP-2312BTFC are designed to operate in conjunction with the CCT-2312-BTFC Series chassis line card.
  - Aurora PG1210A-00. The CWDM SFP plug-in modules are ordered separately.
- MetroE ODU to media converter interconnect cable, Arcwave FX5010-RJ45-1 one meter UV protected outdoor CAT5e cable with weather proof RJ-45 connectors
- CWDM Optical Couplers/Filters for connecting the media converter to the fiber plant, Aurora OP941S-xxxx-R3-00 where xxx is the CWDM wavelength
- Fiber Splice Enclosure, if one does not exist. Available from various suppliers

## Rooftop Deployment Diagram and Material List

The diagram below depicts a typical customer side mast mount deployment using a non-penetrating roof mount kit.



The required components are:

- Mast Mount, PoE Powered Device ARCxtend MetroE WPE ODU – Arcwave Model FX5010-ODU-VM-PD
- Non-penetration Roof Mount. Arris / Telewire PTX-NPR - xxxxy
- FX5010-PS-48V 48 VDC Power-Over-Ethernet Injector and Power Supply
- FX5010-SS-CAT5 CAT5 POE Compatible Surge Suppressor
- 8 AWG Grounding Cable (minimum gauge)
- Grounding Stake

---

## Aligning Nodes

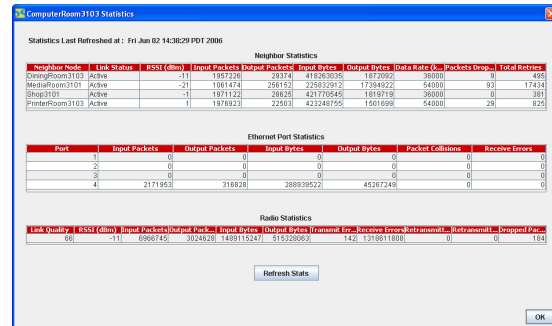
---

The next step in the installation process is to align the customer-side MetroE node to the plant-side node for maximum signal strength using the RSSI (received signal strength indicator) metric on the ARView Statistics screen:

1. Connect the mesh to a network containing ARView.
2. Launch ARView and login to the mesh network.
3. Right click the network on the **Network View**. This will launch the **Node View** screen showing all the MetroE nodes in the network.
4. Select the customer-side MetroE Icon on the Node View screen. A drop down menu will appear.
5. Left click on **Statistics**. This will bring up among other parameters, the **RSSI** value of the node.
6. Adjust the horizontal, vertical and up/down tilt of the MetroE ODU until the maximum **RSSI** value is achieved. Note each change will take approximately 5 minutes to register on the screen. (Note that these are negative number, so -85 dBm is a stronger signal than -95 dBm.)
  - (a) The **RSSI** value should be greater than -60 dBm in order for the radios to reliably associate and pass data.
  - (b) The **RSSI** value must be greater than the RSSI Threshold set for the Mesh Network. The RSSI value is typically set above interfering signals found during the site survey process.
7. Check that the RSSI value of the network side MetroE node is greater than -60 dBm or the RSSI Threshold plus the Hsyteresis Window.
  - (c) If you cannot achieve the desired result, you may need to adjust the network side node and/or check the path between the two nodes.

# Link Verification

The final step in the installation process is to verify the performance of the new link using the Statistic screen and an Ethernet traffic generator. To access the Statistic screen, right click on the new node icon. This will bring up the Node Summary dialogue box shown earlier. Left click on Statistics. Using a traffic generator, run traffic across the link and review the results for conformance to your requirements.



Neighbor Statistics	Ethernet Port Statistics	Radio Statistics
<p>Displays details about direct links between the radio and its neighbors. Information includes the following:</p> <p><u>Neighbor Radio</u> The name of the neighboring radio.</p> <p><u>RSSI (dBm)</u> RSSI value of the link to the neighboring radio.</p> <p><u>Input Packets</u> Number of packets received from the neighboring radio.</p> <p><u>Output Packets</u> Number of packets sent to the neighboring radio.</p> <p><u>Input Bytes</u> Number of bytes received from the neighboring radio.</p> <p><u>Output Bytes</u> Number of bytes sent to the neighboring radio.</p> <p><u>Data Rate</u> Gives the data rate at which the link is operating.</p> <p><u>Packets Dropped</u> Number of packets dropped across the link.</p> <p><u>Total Retries</u> Transmission retries across the link.</p>	<p>Displays details about packets sent and received on the selected radio's Ethernet ports. Information includes the following:</p> <p><u>Port</u> The port number for which statistics are provided.</p> <p><u>Input Packets</u> Number of packets received over the Ethernet port.</p> <p><u>Output Packets</u> Number of packets sent over the Ethernet port.</p> <p><u>Input Bytes</u> Number of bytes received over the Ethernet port.</p> <p><u>Output Bytes</u> Number of bytes sent over the Ethernet port.</p> <p><u>Packet Collisions</u> Number of packet collisions detected.</p> <p><u>Receive Errors</u> Total number of Cyclic Redundancy Check (CRC) errors detected in packets received over the Ethernet port.</p>	<p>Displays details about transmit/receive characteristics of the radio's radio and antenna. Information includes the following:</p> <p><u>Link Quality</u> Displays the average quality of the communication link between the radio under evaluation and other wireless mesh radios.</p> <p><u>RSSI (dBm)</u> Displays the Received Signal Strength Indicator (in dBm) of the radio's radio. Typically, higher RSSI values indicate better channel conditions, while lower RSSI values indicate poorer channel conditions that may require intervention.</p> <p><u>Input Packets</u> Number of packets received over the radio's radio.</p> <p><u>Output Packets</u> Number of packets sent over the radio's radio.</p> <p><u>Input Bytes</u> Number of bytes received over the radio's radio.</p> <p><u>Output Bytes</u> Number of bytes sent over the radio's radio.</p> <p><u>Transmit Errors</u> Number of transmission errors over the radio's radio.</p> <p><u>Receive Errors</u> Total number of Cyclic Redundancy Check (CRC) errors detected in packets received over the radio's radio.</p> <p><u>Retransmitted Packets</u> Number of packets the radio's radio retransmitted due to detected transmission errors.</p> <p><u>Retransmitted Packets Failed</u> Number of retransmitted failed packets.</p> <p><u>Dropped Packets</u> Number of packets dropped due to excessive errors or software retries.</p>

---

## Troubleshooting

---

### Can't Establish a Wireless Link between Nodes

- The nodes may have different mesh settings.
- The Received Signal Strength is not adequate for proper operation or is not above the RSSI Threshold plus the Hysteresis Window setting.

### Poor throughput or packet loss

The most common problem you will encounter is excessive packet loss also known as dropped packet which can occur in either over the air or on the wired Ethernet portion of the networks. Excessive packet loss will manifest itself as low throughput.

#### Expected Throughout

The MetroE solution will deliver sustained Ethernet throughput of 32 mbps as measured using FTP programs but actual performance maybe be less depending on frame sizes or network protocol used.

When trouble-shooting performance issues it is important to consider whether the packet-loss is occurring on the wireless link or on the Ethernet network.

Wireless packet loss can be caused by:

- Inadequate Receive Signal Strength at either end
- RF Interference from a another radio
- Multipath interference
- Faulty radio
- Inadequate power to the radio
- Radio is not grounded

Packet loss can occur on the Ethernet portion of the network if there is:

- Slow or Bad Network Equipment
- Cabling or connector problems
- Equipment is not grounded

## Possible Causes and Fixes

Cause	What to look for / What to do
Inadequate Receive Signal Strength	<p>If the link was working before, check if either of the nodes has been moved throwing off the alignment or if something has been placed or grown into the line of site path.</p> <p>Calculate required Receive Signal Strength for link distance and compare to RSSI value reported by the node. Is the measured value close to the calculated value?</p> <ul style="list-style-type: none"> <li>• If not check the antenna alignment, line of site path, Fresnel zone and clearance. If everything looks good, try increasing the Transmit Power, if it is not already set to the maximum. If the Receive Signal Strength does not increase accordingly, you most likely have destructive multipath interference. Try moving the customer side antenna up or down side to side to move it way from the interfering signal.</li> <li>• If it is, check that there is sufficient fade margin, typically at least 10 dB for line of site links.</li> </ul>
RF Interference	<p>Check for interference in your operating frequency band at both ends of the link at various times over a period of several days. Are you using a noisy channel?</p> <ul style="list-style-type: none"> <li>• If there is a clear channel(s), change to one.</li> <li>• If there is not a clear channel utilize the RSSI Threshold feature to block out signals below the interfering signals. If your survey finds an interfering signal of -75 dBm, set the RSSI Threshold to -72 dBm and the Hsyteresis Window to 3. Although this will reduce the range of the system, it will effectively block out the interference.</li> <li>• Try moving the nodes away from the interference source. Sometimes moving the nodes just a few feet reduces the problem.</li> <li>• For interference from the sides and rear, shield the radio with metal and/or RF absorbent material.</li> </ul>
Multipath Interference	<p>On very short links or links over reflective surfaces, like a body of water, (less than ½ mi.) you can experience packet loss due to bounced or multipath signals.</p> <p>Multipath is most likely the problem if increasing the transmit power increases the packet loss but not the Receive Signal Strength.</p> <p>The first thing to try is to minimize the transmit power and the second would be to move the node away from the multipath. Normally a moving the node up or down a few feet will fix the problem. If the multipath is caused by object(s) in the Fresnel zone you will need to relocate the nodes so the object(s) are no longer in the Fresnel zone.</p>
Node Grounding	<p>Check that both nodes and the connection cables are grounded properly. The MetroE node includes a lug for grounding.</p>
Network Equipment	<p>Check the Ethernet network performance at both ends of the link prior to the nodes.</p>



Ethernet Cabling	Check the Ethernet cable connection from the node to the customer premise equipment. The Ethernet cable should be outdoor-rated, shielded and less than 300 feet total from the node to the customer premise equipment. Make sure there aren't any splices in the cable.
Defective Node	If nothing else works, try swapping out one or both nodes.

---

## Managing the Mesh

---

Mesh management can be performed using *ARCView*, *ARCView Pro* or *SNMP*.

- *ARCView* allows you to manage a single mesh network and runs locally on you PC.  
*ARCView Pro* is a client/ server solution that allows you to manage multiple mesh networks

The reader is referred to the *ARCView / ARCView Pro User's Manual* for descriptions and operating instructions for both solutions.

- The *MetroE* supports Simple Network Management Protocol (*SNMP*) based MIBs for mesh management using third-party network management tools.

For more information on the *MetroE* MIB contact Arcwave Customer Support.

---

## Adding New Radios to an Existing Network

---

To ensure secure and reliable communications, all MetroE ODU nodes on the same mesh network must share the same IP address, radio channel, and security settings. Therefore, if you want to add new MetroE ODU nodes to an existing mesh, you must first update their settings to match those of the mesh. After these updates are made, the new nodes can successfully join the mesh. The easiest way to do this is to save the settings from an existing mesh as a backup file. This can be applied to new nodes; the new nodes can then join the mesh. You should keep settings files of all meshes for future reference.

To add one or more nodes, you save the mesh-wide configuration information from an existing node in a file, and then apply the configuration settings in the file to the new node(s). You can choose to apply a saved configuration to a single node or to all the nodes in the mesh. You might want to apply a saved configuration to all nodes in the mesh if you are adding several nodes at the same time. When adding multiple nodes to a mesh, make sure that all nodes are powered before performing the steps below.

1. Right-click on one of the linked nodes in the mesh diagram of the mesh to which you want to add nodes.
2. Select Import Mesh Wide Configuration from this MetroE. A dialog box appears.
3. Type in a name for the configuration file and select where you want to store the file.
4. Click on the Save button.

At this point you have a backup of the production mesh. Now you must connect to the new node.

5. Connect the ARCVIEW Pro workstation directly to the new node via an Ethernet cable.
6. If it is a new node, set the workstation's IP address to the default, as described earlier. Then set the country code.
7. If it is not a new node, you will either need to know its IP address, or reset it to factory default settings. If you know the IP address, configure the workstation accordingly, and proceed. Verify that the country code is already set to the correct country. (Changing country codes affects other settings, so it should be done first.) If you don't know the IP address, reset the node to factory default settings, then proceed as in step 2.
8. Use the 'Add Mesh' command under the file menu to add the new node's IP address. The node should become visible. If you are configuring multiple nodes, they should all become visible. Make sure they are before proceeding.
9. Right-click on the node, use the Apply Mesh Wide Configuration command to apply the settings. Reboot the node.
10. Reconfigure the ARCVIEW Pro workstation to the correct IP address.

The new node or nodes should appear in the correct Mesh diagram.

---

## Retorting Default Settings

---

You can restore your MetroE mode to its factory default settings using the reset application provided on the CD-ROM disc included with your order.

To reset the MetroE node to its factory defaults, you must run the rest application within 3 minutes of the MetroE node booting up.

1. Install the rest application on a workstation. If running windows, install 3200factoryreset.exe; if running Linux, install 3200factoryreset.bin.
2. Connect the workstation to the Ethernet Port of the MetroE node with the node powered up.
3. Start up and run the reset application.

### MetroE Factory Default Settings

- AES encryption: Disabled
- WEP encryption: Disabled
- Mesh IP address: 192.168.224.150
- Ethernet ports: All ports enabled
- HotView username: admin
- HotView password: arcwave
- Radio Power = 75% of approved maximum power
- ESSID = METRO\_MESH
- Radio Mode – 5.8 GHz
- Radio Channel - 161

After a factory reset, you will need to specify the country code.

---

## Appendix A: Arcwave Support

---

### Support Extranet

As an Arcwave customer, you are entitled to receive free access to our support extranet on our web site, [http://www.arcells.com/customer/support\\_extranet.html](http://www.arcells.com/customer/support_extranet.html). Your sales representative can provide you with the User Name and Password.

### Standard Maintenance and Support Agreement

All customers are required to maintain maintenance and support agreements with Arcwave for all deployed products. Arcwave maintenance and support services include email and phone access to product specialists for installation, usage assistance, problem diagnosis and resolution, clarifications in documentation, and technical guidance to customers with current software support agreements.

Upgrades to services packs, minor and major releases are not covered under the support agreement.

### Technical Support

Arcwave's customer support organization provides pre-sale, installation and post-sale support as well as training to service providers who have purchased products directly from us or through an authorized partner.

For additional information please contact your sales representative or call us directly at [techsupport@arcwaveinc.com](mailto:techsupport@arcwaveinc.com), 1-800-850-4595 or 1-408-748-7570.

### Product Returns

Please contact your sales representative for information on returning defective or damaged product for replacement. Please keep all original packaging materials in the event they are needed to return the product for servicing. Do not open the product as this will void your warranty.

### Sales Assistance

Contact your sales representative for additional products or accessories.

## Appendix B: FX5010 Technical Specification

Wireless Interface		
Frequency Range	5.725 to 5.850 GHz (ISM Band)	
Channels	5 non-overlapping selectable channels per band	
Channel Bandwidth	20 MHz	
Channel Selection	Dynamic frequency selection (DFS) or manual	
Transmit Power	User selectable up to +20 dBm (100mWatts) Transmit power control (TPC)	
Modulation Format	OFDM	
Data Rates / Modulation	Adaptive	
	6/9 Mbps	BPSK
	12/18 Mbps	QPSK
	24/36 Mbps	16 QAM
	48/54 Mbps	64 QAM
Receiver Sensitivity (BER 10-6)	6 Mbps	-93 dBm
	36 Mbps	-83 dBm
	54 Mbps	-74 dBm
Error Correction	FEC, ARQ	
Encryption	104/128- or 40/64-bit WEP 128- and 256- bit AES	
Duplex Scheme	TDD	
Latency	<2 msec	
Antenna	Horizontal Beamwidth	20°
	Vertical Beamwidth	20°
	Transmit Gain	18 dBi
	Receive Gain	16 dBi
Ethernet Bridging		
Protocol	802.3, 803.3u compatible	
Interface	10 Base-T/100-Base-T (weather proof RJ-45) – auto MDI/MIDX switching	
Maximum packet size	1580 bytes	
Ethernet Throughput	34 Mbps aggregate user data	

VLAN Trunking	Only passed 802.1Q tagged packets
Class of Service	802.1p, 3 settable levels assignable by port
Packet Filters	Deny/admit access by MAC address
<b>Management</b>	
ARCView Management Software	Client/Server Architecture Windows® 2000/XP, Linux®, Solaris™ and FreeBSD. Java 2 Platform, Standard Edition, version 1.5 or later. PostgreSQL database engine on server Pentium 4-compatible processor or later
MIBs	SNMP v2c/v3 (Alarms, Configuration, Metrics)
Metrics	Link, Radio, and Ethernet Port Statistics
LED	Power, Fault, and Link Status
Upgrade	TFTP
<b>Power</b>	
Input, via RF Port	45 to 105 VAC
Input, via 802.3af POE	+24 or -48 VDC
Power Consumption	Without POE load: 20 Watts Maximum With POE load: 32 Watts Maximum
Output, via 802.3af POE	+16 VDC, up to 12 Watts
<b>Physical</b>	
Dimensions and Weight	17" x 7.8" x 3.3", 6 lbs
Mounting	Strand or Mast (up to 1-3/4" radius)
Common Power and RF port	SCTE compliant F-Type connector
Ethernet Port	Weather-proof RJ-45
<b>Environmental and Regulatory</b>	
Operating Temperature	-40 to +65°C
Operating Humidity	5 % to 100% condensing
Radio	FCC Part 15, sub-part C 15.247

-- End of document --