

Figure 4-3 Scan Configuration-3

After you change settings, press the **OK** button to configure, or press **Restore Default** to return to the scan default settings.

4.2 Scan driver

Scan driver lets you put data into Microsoft Wordpad. Open scan driver and the scan module powers on the scanner. You can then scan barcode. To turn off the power, press **Exit** on the task bar.

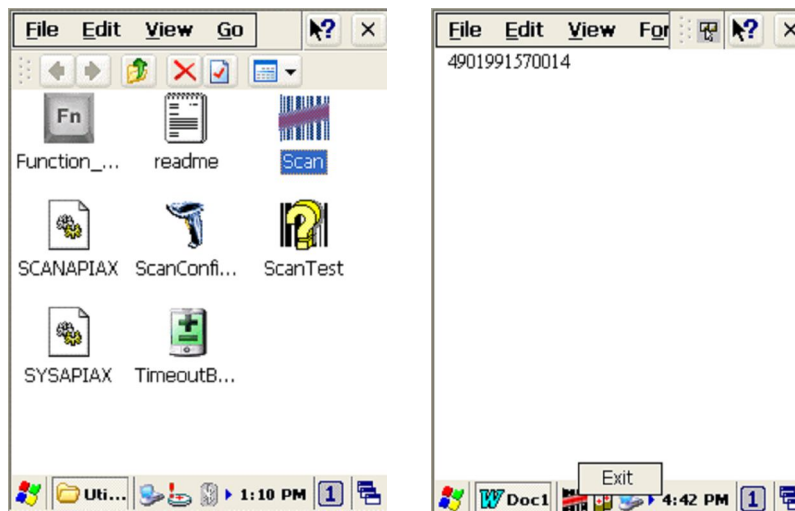


Figure 4-4 Scan Driver

4.3 Scan test

The PT-90 has a Scan Test.exe program that allows you to test the barcode scan function. Scan Test.exe is located in directory **Desktop→ Utility→ Scan Test.exe**.

This program shows barcode type and barcode data when pressing the **Scan** key.

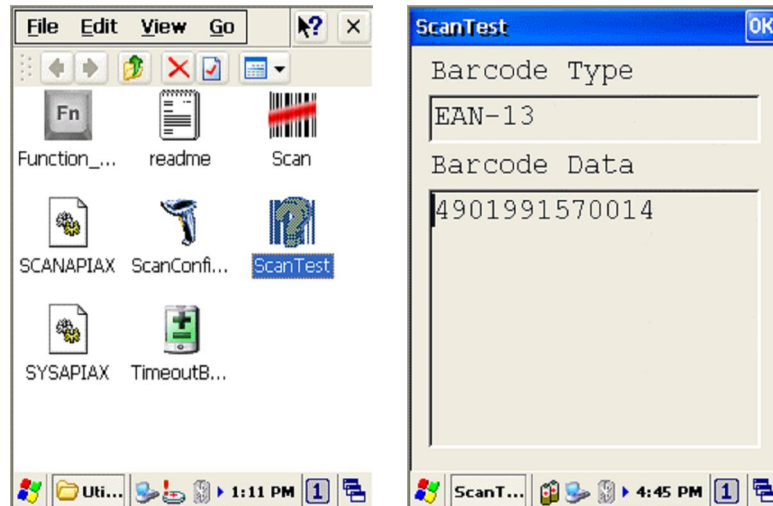
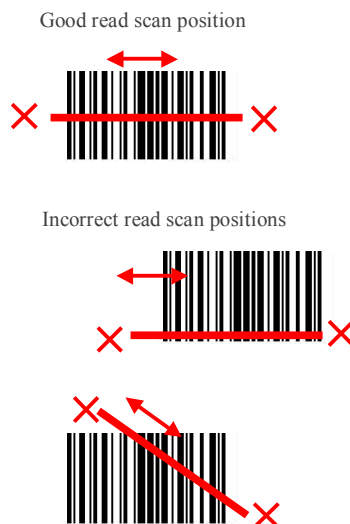


Figure 4-5 Scan Test

4.4 Reading barcode

-
- Note:**
- ◆ Observe handling precautions.
 - ◆ Make sure the mobile computer is installed according to instructions.
 - ◆ Never remove the main batteries or battery pack while the mobile computer is turned on. Doing so can cause loss of data in the mobile computer.
 - ◆ Avoid looking directly into the LED light beam emitter, or pointing the LED light beam directly into someone's eyes.
-

Position the LED light beam over the bar code from margin to margin and pass the scanner downward over the bar code, as shown in the scan position illustration



The scanning sequence is defined by the user's application. A typical sequence is:

- Point the mobile computer at the barcode and press the Trigger key **SCAN**.
- Point the LED lightbeam at barcode as shown in the scan position illustration above.
- The scanner reads the barcode and the results are indicated.

A "Good Read" means that the scanner has effectively recognized and decoded the bar code. In most cases, the application program provides an indicator signal to indicate a good read.

If the read is incorrect, try again paying close attention to the instructions.

When reading a small bar code, decrease the distance between the mobile computer and the bar code. For larger bar codes, position the mobile computer so that the bar code fits into the LED light beam. When reading a very high density bar code, decrease the distance between the mobile computer and the bar code. For a low density bar code, increase the distance between the mobile computer and the bar code.

4.5 Barcode reading problems

When the barcode can NOT be read, try the following:

- Change the angle between the bar code and the mobile computer.
- Change the distance between the bar code and the mobile computer.
- If the bar code is larger than the LED light beam, try moving the mobile computer a bit further away from the bar code.

5. Utilities

5.1 Function Key Setting

To assign your favorite application program or virtual key from **F1 ~ F10** and **P1~P4** hot keys. **Function Key.exe** is located in directory **Desktop**→ **Utility**→ **Function_Key.exe**.

1. Choose **F1~F10** or **P1~P4** from list.
2. Tap **Define** to define application or virtual key.
3. Tap **Apply** or **OK** to set function key setting.
4. Tap the **Default** to return to default setting.

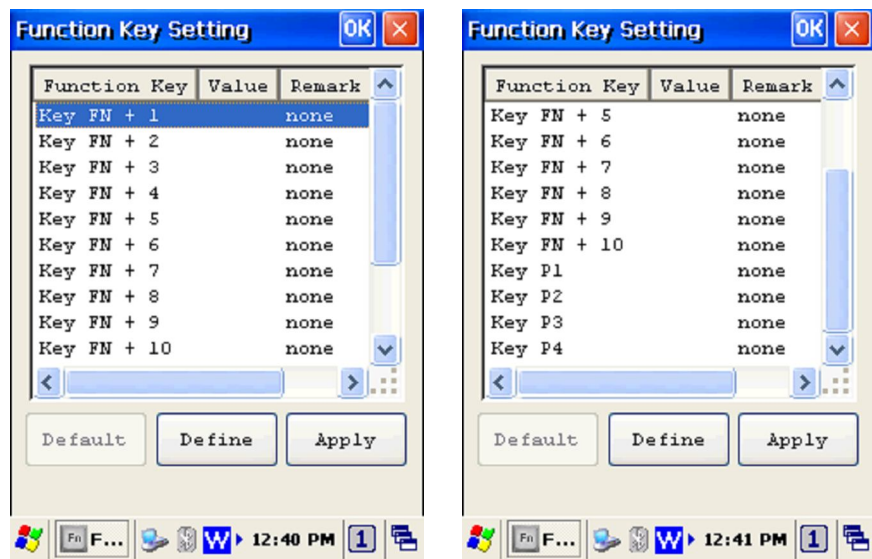


Figure 5-1 Function Key Setting

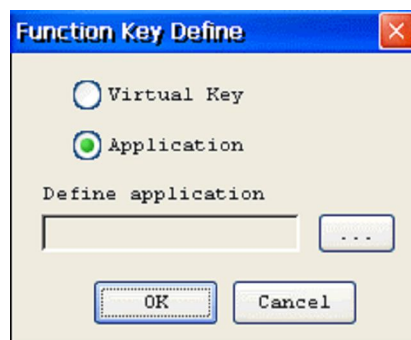


Figure 5-2 Function Key Define

5.2 Timeout & Brightness

Timeout&Brightness setting is a tool for changing the LCD backlight and keypad LED. If you wish to save power use this program to change LCD backlight and keypad LED settings. This application supports battery power and external power settings.



Figure 5-3 Timeout & Brightness

6. Software Applications

The PT-90 includes software applications such as Internet Explorer, Media player, Microsoft WordPad, Remote Desktop Connection, Transcriber, and Windows Explorer.



Figure 6-1 Software Applications

6.1 Internet Explorer

With Internet Explorer, you can view Web or intranet Web pages on your device. You will need to use WLAN to connect to an Internet server provider (ISP) or network.



Figure 6-2 Internet Explorer

6.2 Media Player

The PT-90 comes with Media Player for Windows CE installed.

- λ Open Media Player by selecting **Start** → **Programs** → **Media Player** from the desktop.
- λ Select **File** → **Open** to open a new media file.
- λ Please refer to www.microsoft.com for additional information and help with your Microsoft Windows Media Player.



Figure 6-3 Media Player

6.3 Microsoft WordPad

You can create and edit documents and templates in WordPad, using buttons and menu commands that are similar to those used in the desktop version of Microsoft Word. You can work with files Normal or Outline view.

WordPad documents are usually saved as **.pwd** files, but you can also save documents in other file formats, such as **.rtf** or **.doc**.

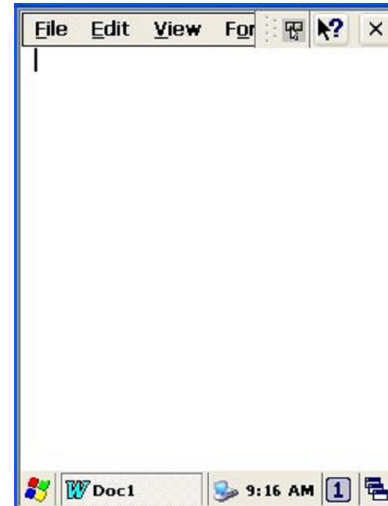


Figure 6-4 Microsoft Wordpad

6.4 Remote Desktop Connection

Using Remote Desktop Connection, you can log on to Windows Mobile computer Server and use all programs installed on this server. For example, instead of running Microsoft Pocket Word, you can run the desktop version of Microsoft Word.

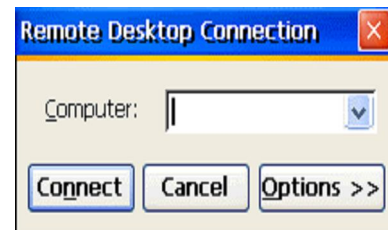


Figure 6-5 Remote Desktop Connection

6.5 Transcriber

Features:

- λ Microsoft Transcriber is the natural handwriting recognition solution for your Windows CE device. It recognizes words from its integrated dictionary, and allows you to write in cursive, print or mixed handwriting.
- λ The **letter Shapes Selector** (note 1) is for optimizing recognition to your own handwriting style
- λ Transcriber works transparently in the background of all Windows CE applications providing handwriting input, while taking away no precious screen space.



Figure 6-6 Transcriber

6.6 Windows Explorer

Windows Explorer works almost the same on your PDA as it does on your PC. See the topics below for information about the difference in Windows Explorer on your device.

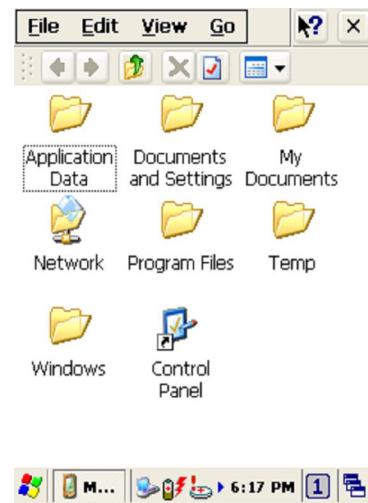


Figure 6-7 Windows Explorer

7. Communication

Argox PT-90 lets you link to a host computer via RS-232 or USB port for data communication. This chapter gives an overview of PT-90's communication capabilities.(remove)

The Arogox PT-90 lets you link to a host computer via RS-232 or USB port for data communication with cable or cradle. This chapter gives an overview of the PT-90's communication capabilities.

7.1 Microsoft ActiveSync

Download and install Microsoft ActiveSync if you run Windows XP or Windows 2000 on your computer and you want to sync content between PT90 and your computer. You can use ActiveSync with the following versions of the Windows operating system:

- Windows 2000 Service Pack 4(SP4)
- Windows XP SP1
- Windows XP SP2
- Windows XP SP3

ActiveSync provides a user-friendly interface and it can be downloaded free of charge from Microsoft's Website.

With Microsoft ActiveSync you can:

- λ Transfer data between PT90 and your computer.
- λ Limited backup/restore functionality.
- λ Install /uninstall programs on PT-90.

Note: ♦ ActiveSync is only compatible with Windows XP or earlier. The detail description of ActiveSync can be found in Microsoft's Website.

7.2 Microsoft Mobile Device Center

Download and install Microsoft Mobile Device Center if you run Windows Vista or Windows 7 on your computer and you want to sync content between PT90 and your computer. You can use Mobile Device Center with the following versions of the Windows operating system:

- Windows Vista
- Windows 7

Microsoft Mobile Device Center can be downloaded free of charge from Microsoft's Website.

With Microsoft Mobile Device Center you can:

- λ Transfer data between PT90 and your computer.
- λ Install /uninstall programs on PT-90.

Note: ♦ Windows Mobile Device Center s only compatible with Windows Vista and Windows 7. The detail description of Mobile Device Center can be found in Microsoft's Website.

8. Overview of Microsoft Windows CE 6.0

This chapter describes Microsoft Windows CE 6.0, the operating system for the PT-90

This introduction to Microsoft Windows CE 6.0 includes:

- How to use the main Windows
- How to use a taskbar
- How to use settings

8.1 Main Windows

When you turn on PT-90, you will see the main Windows of Window CE 6.0, which is similar in appearance to Windows XP. The main window consists of a background screen and taskbar.

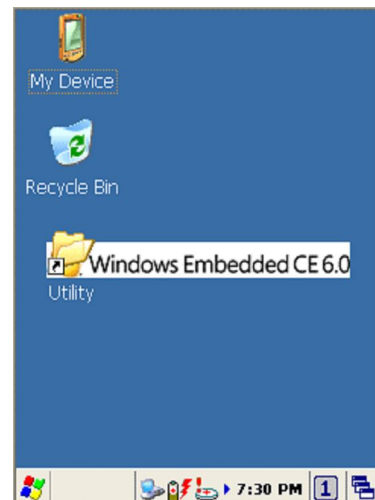


Figure 8-1 Main Window

The screen shows short cut icons for the main programs of Microsoft Windows CE 6.0. A description of the icons follows:

My Device:

Shows the internal configuration of PT-90 and the folders and files it contains.

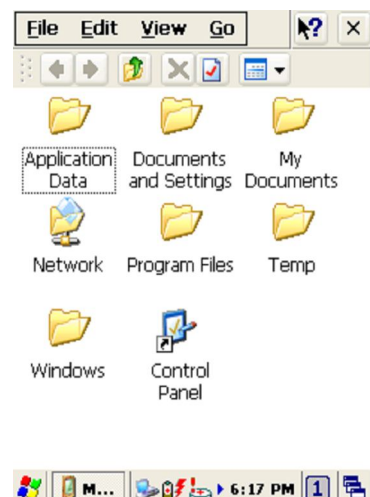


Figure 8-2 My Device

Recycle bin:

Completely delete or restore files and data. This folder saves deleted files from Windows Explorer or the background screen. You can completely empty or restore files in the recycle bin.

Caution: Once you have emptied the recycle bin, you cannot restore the files and data previously in the recycle bin.

Taskbar

Windows CE 6.0's taskbar is designed to be simple and user-friendly. The picture below shows the configuration of the taskbar.



Figure 8-3 Taskbar

Start Icon

Start icon is the starting point for the PT-90 program. If you point at the start menu with the stylus pen, you can see various menus including program, bookmark, document, setting, help, and operation. If you choose each menu, detailed executable programs appear as in the picture below. If you choose and press, you can run the program of your choice. Windows CE 6.0's start menu is similar to that of Windows on a desktop PC.

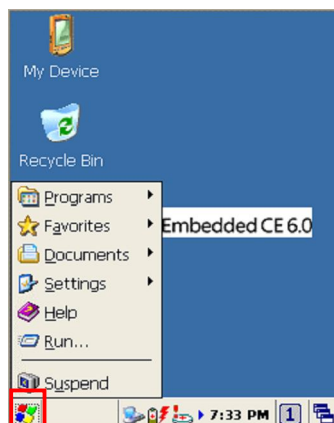


Figure 8-4 Start Icon


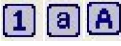
8.2 Taskbar

Taskbar shows a variety of information including keying in characters, battery, network connection, status of running programs, etc.

Open Taskbar and Start Menu setting by selecting **Start** → **Settings** → **Taskbar and Start Menu** from the desktop. There are **Always on top**, **Auto hide** and **Show Clock** setting in **General** tab. You can choose the check box of desired setting.

The following explains the function of icons appearing on the taskbar.

Input Method:

To activate **Keyboard** or **Transcriber**, press  icon and select input method. You can also activate **Transcriber** in following order: **Start** → **Programs** → **Transcriber**. To deactivate input method, press  icon and select Hide input Panel.

To change the features of the input method, select input method in **Start** → **Settings** → **Control Panel** → **Input Panel** and click the option you wish to setup.





Figure 8-5 Input method



Transcriber:

When you want to key in characters when making a document or setting, start Transcriber. Using the stylus to draw characters you want on the input panel, this program recognizes the characters and transform them into typeface characters. To start the Transcriber, run the program as the following order: **Start** → **Programs** → **Transcriber**.

The picture below shows how the Transcriber works in keying in characters on Microsoft Word Pad. When Microsoft Transcriber is running you will see the  icon located in the taskbar. When Microsoft Transcriber is active the  icon shows a dark background.

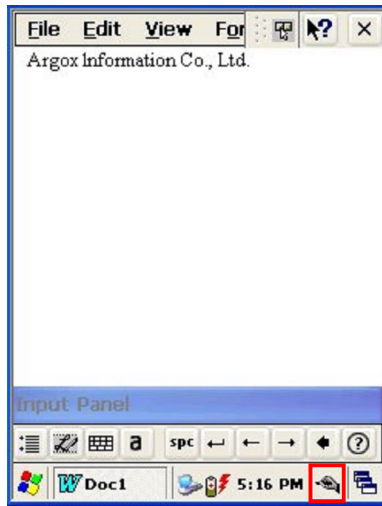



Figure 8-6 Transcriber

 **Keyboard:**

When **Keyboard** input panel is running, you will see the  icon located in the taskbar.

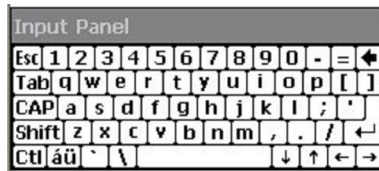


Figure 8-7 Keyboard Input Panel

 **Upper / lower case Selection:**

Press this icon to select upper and lower case letters. If you select upper case, capital letters and characters appear on the number key pad. It serves the same function with the **Shift** key.

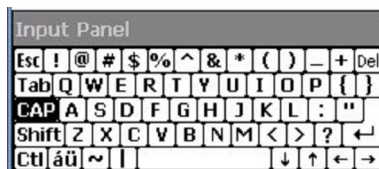









Figure 8-8 Keyboard Input Panel -1

Status Indicator Icon:

The following is a list of icons that appear in the taskbar's status area.

Icon	Description
	Battery capacity is low
	Battery is charging
	Linked to desktop PC through USB
	WLAN not connected
	Signal strength for WLAN connection
	Function key status
	Alt , Ctrl and Shift status

8.3 Setting up the PT-90

You can set up various configurations of the PT-90 such as Date/Time, Network, Display, Volume and Sounds, Power, System, etc. at the control panel.



Figure 8-9 Setting up

To Tap **Start** → **Settings** → **Control Panel**, the control panel window appears. In the View option in the menu, you can change the view mode into large icons, small icons, details or to arrange icons. The control panel appears as below:

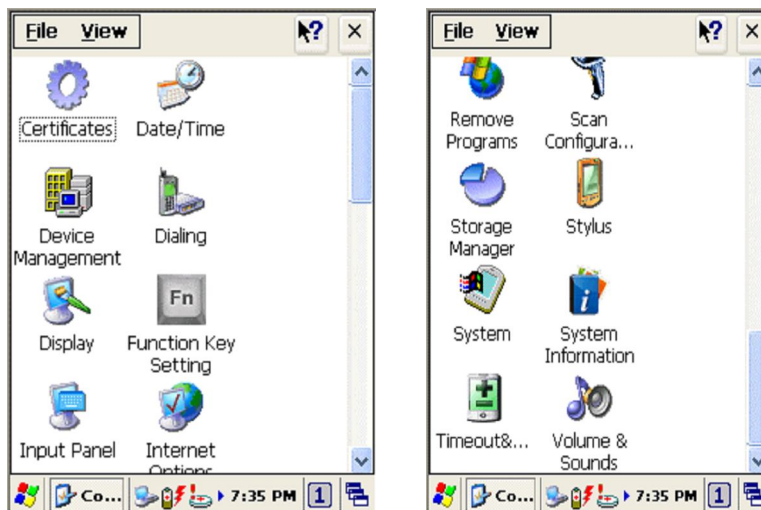


Figure 8-10 Control Panel

8.3.1 Certificates

Application programs use certificates to ensure reliability and safe communication.

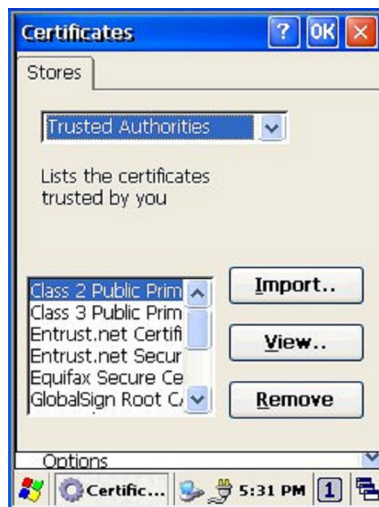


Figure 8-11 Certificates

Authorized certificate providers issue certificates that are valid for a specified period. Windows CE manages several certificate storages.

1. Select Go to **Start** → **Settings** → **Control Panel**.
2. Double click a **Certificates** to run.
Select certificate storage for browsing or correcting through the storage tap list.
Trusted Authorities: Includes the top quality certificates.
My certificate: This saves the user's personal certificate to identify the user.
Other Authorities: Middle certificate providers establish chains of reliability.
3. To add certificates or secret keys in the selected storage, press the **Import** button then select the way to bring certificates or keys. You can select them from files or a micro SD card.
4. To see details of selected certificates such as extension, expiration date, etc. press the **View** button.
5. To delete the selected certificate from storage, press **Remove** button.

8.3.2 *Date/Time*

This screen sets date, time, standard time zone.

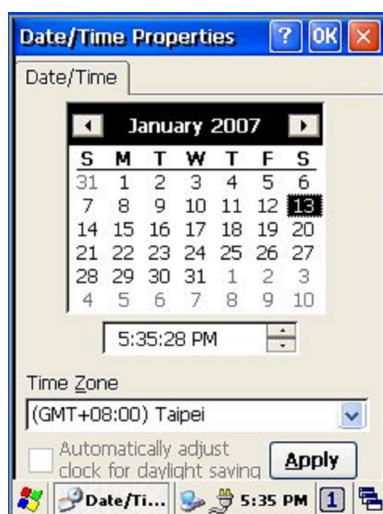


Figure 8-12 Date/Time

Date/Time

You can set standard time zone, year, day and time. Set as follows:

1. Press the down arrow in the standard time zone until it reaches your location. If the previously set value is appropriate, move on to the following.
2. Select **Year** and **Month** in the calendar. If the current year is not correct, press **Year** and adjust. You can select the month using left and right arrows or the monthly tab that pops up when pressed.
3. Press the correct date on the calendar.
4. Set time by keying in correct time in the current time box. The box shows **AM/PM: Hour: Minutes: Seconds**. Press each and adjust time with arrows on the right.
5. Press **Apply** to save the changes. Confirm if the time is correct.

8.3.3 *Dialing*

Dialing Properties

1. In the When dialing from list, select the **Location** where you want to change settings.
2. To create a new location, select **New**. Enter the name of the location, and then select **OK**
3. Enter or Edit the **area code** and local **country code** as needed.



Figure 8-13 Dialing Properties -1



Figure 8-14 Dialing Properties -2

4. In Dial using, select **Tone dialing** or **Pulse dialing**. Most phone lines are tone.
5. To automatically disable call waiting, select **Disable call waiting by dialing**, select the appropriate number sequence in the list, or enter a new sequence.

Editing dialing patterns

1. Using the codes listed, revise the dialing patterns as needed.

-
- Notes:**
- ◆ If you need to use characters other than the ones listed here, use manual dialing.
 - ◆ Hyphens and spaces in dialing strings are ignored.
 - ◆ Some modems may not respond to the some characters, even though your device lets you add them to the dial string.
-

8.3.4 *Display*

This screen lets you set the wallpaper image of the PT-90, or change the color of the background screen. Call up the right button menu from desktop and select **Properties** and you can check the Display Properties window.

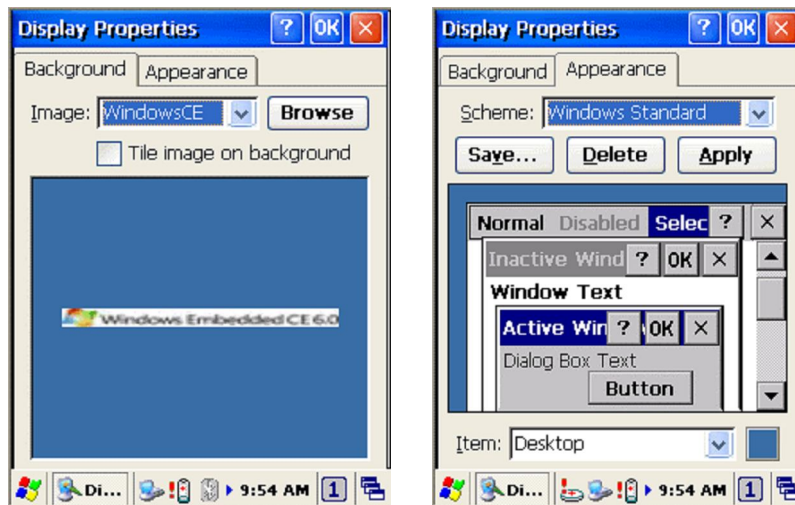


Figure 8-15 Display Properties

Display

Change the desktop image of the background screen as follows:

1. Select the **Background** tab.
2. Click **Browse** to select an image file.
3. Press **OK** to apply the setting.

8.3.5 Hot Function Key

Please refer to **Function Key Setting** above.

8.3.6 Input Panel

You can set up the **Input method** and **Options**.

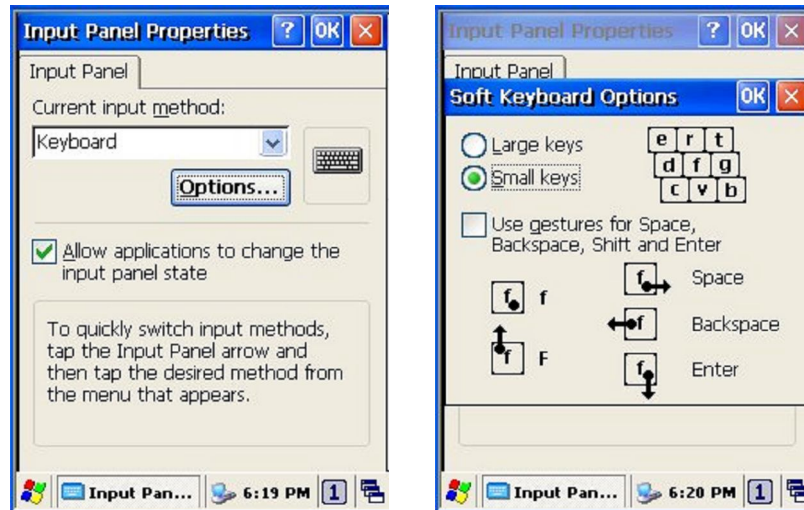


Figure 8-16 Input Panel Properties

1. Select **keyboard** and press **Options**. The **Soft Keyboard Options** window appears.
2. Select the **Size** of the keys.
3. To **Use gestures for Space, Backspace, Shift and Enter**, click the gestures check box.
4. Click **OK** to save the changes of **Soft Keyboard Options**.
5. Click **OK** to save the setting of **Input Panel Properties**.

8.3.7 *Internet Options*

To use the **Internet Options**, make the following settings.

General

Click the **General** tab.

1. Define your own start page and search page on the tab.
2. It also can set the cache size.
3. Click **Delete Browsing History** button, it can clear temporary internet files, cookies or history.



Figure 8-17 Internet Options -1

Connection

Click the **Connection** tab and set Internet connection methods.

1. To use a proxy server, click **Internet Connection by Proxy Server** check box and enter the proxy address and port.
2. To ignore the proxy server when making access to local address, click **No proxy server for local address** check box. This option is available only for the proxy server use. If you use a wireless LAN card, click the **LAN User manual dial** check box.

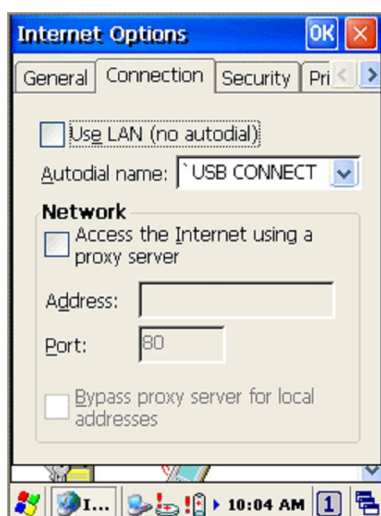


Figure 8-18 Internet Options -2

Security

Under **Security** page, specify the security option for your browser.



Figure 8-19 Internet Options-3

Privacy

Under Privacy page, specify the cookies setting include of privacy level.



Figure 8-20 Internet Options-4

8.3.8 Keyboard

Repeat Tab

1. To change the amount of time between taps before repetition starts, adjust the **Repeat delay** slider
2. To change the repeat rate, adjust the **Repeat rate** slider.
3. Test your new setting.
4. Tap **OK** to exit the **Keyboard** properties.

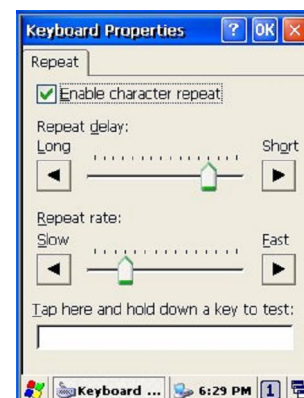


Figure 8-21 Keyboard Properties

8.3.9 Mouse

1. **Double-click** the checkerboard grid at a comfortable speed.
2. **Double-click** the Test icon to test your setting.
3. Tap **OK** to exit the Mouse properties.

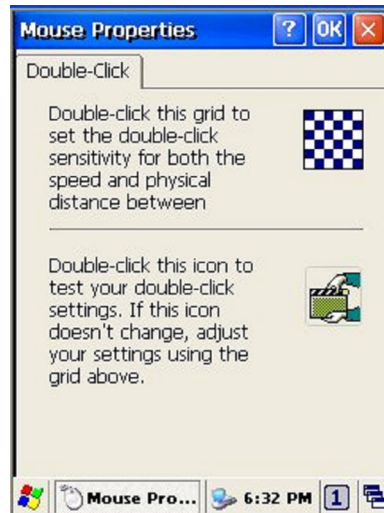


Figure 8-22 Mouse Properties

8.3.10 Network and Dial-up Connection

You can directly link to the network via network (Ethernet, LAN) or phone (modern) connection. You can send or receive emails or access available files on the network server or search the Internet or Intranet.

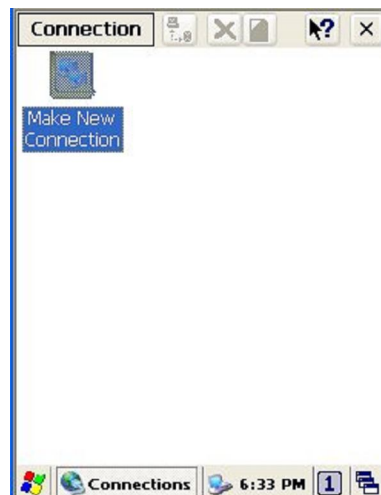


Figure 8-23 Network and Dial-UP Connection

8.3.11 *Owner*

This function lets you set the PT-90 to display user information at start up, add information on the user, and set up a **Network ID**.

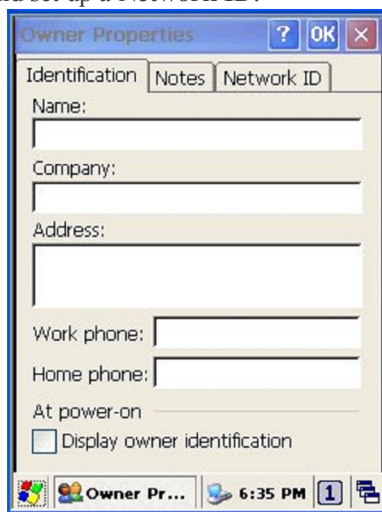


Figure 8-24 *Owner Properties*

Identification

Enter information such as **Name**, **Company**, **Address**, **company phone number**, **home phone number** in the user information tab. To display the owner information on the start screen for system start, click the **Display Owner Identification** check box.

Notes

Enter additional user information or other information in the **Notes** box. To show notes on the initial screen when the system starts, click **Display Owner Notes** check box.

Network ID

Windows CE 6.0 gains access to Network resources using the owner information. Enter the information provided by Network manager such as **User Name**, **Password**, and **Domain**.

8.3.12 *Password*

You can set a password to keep unauthorized users from using the PT-90.



Figure 8-25 Password Properties

To set up a password:

1. Select the **Password Setting** tab.
2. Enter the **password** in the password box.
3. Re-enter the **password** in the password confirmation box.
4. To enable the password protection when the power on, click on the **Enable password protection at power-on**.

You may encounter a request to enter the password if resume or warm/cold boot PT-90. If you forget the password and enter the system you may have to do a clean boot. A clean boot erases all files, data, as well as programs. Please consider using a password that is easy to remember and leave a record easy to access. To deactivate a **Password**, delete the **Password** in the password feature window.

8.3.13 *PC Connection*

You can set up a **PC Connection** to synchronize the device with a desktop PC. You can set desktop USB and serial port connections. The following is the procedure required for changes in **PC Connection**.

Begin with Windows CE 6.0. The PT-90 basically supports the Internet functions via USB. If you set up a partnership with PC during ActiveSync, it provides **USB CONNECT** link items that enable an Internet connection through the USB connection:

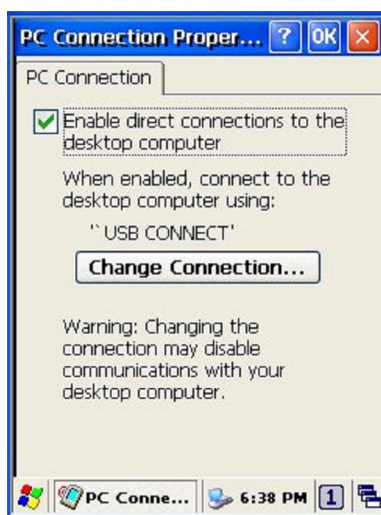


Figure 8-26 PC Connection

1. Create a new connection in Go to **Start** → **Settings** → **Network and Dial-up Connections**. Choose the direct connection as connection type. For detailed information, refer to the < Network and Dial-up Connections > section. (Page 57)
2. Select Go to **Start** → **Settings** → **Control Panel** → **PC connection**.
3. Select **Change Connection** icon.
4. Select the connection mode.
5. Click **OK** to save the setting.

To connect the PT-90 to a desktop PC, you must have Microsoft ActiveSync 4.5 for Windows 2000/XP or Microsoft Mobile Device Center 6.1 for Windows Vista/7 on your desktop PC.

8.3.14 *Power*

Please refer to the previous section on Power Management. (Page 21)

8.3.15 *Regional Settings*

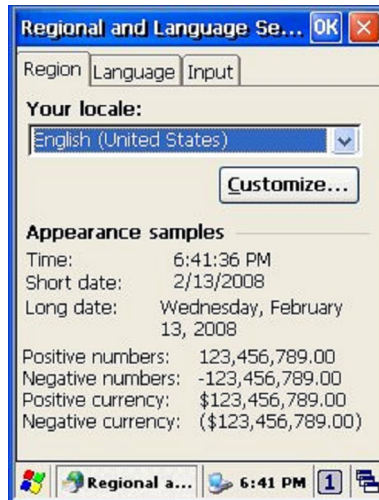


Figure 8-27 Regional Setting Properties

You can set up region, numbers, currency, time, and date.

1. Select Go to **Start** → **Settings** → **Control Panel**.
2. Open **Regional Settings** icon.
3. Select the tab for information to change.
4. Select the < Preferred> option. Available features are dependent on which region you have chosen in the region tab.(REMOVE)

8.3.16 *Remove Programs*

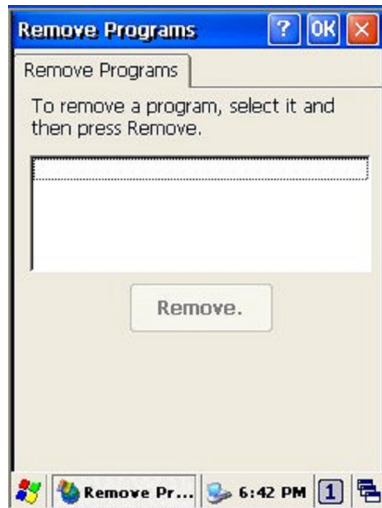


Figure 8-28 *Remove Programs*

To remove installed programs:

1. Select Go to **Start** → **Settings** → **Control Panel**.
2. Open the **Remove Programs** icon.
3. Select the program and click Remove to uninstall program.
4. Click **Remove**.

8.3.17 *Scan Configuration*

Please refer to the previous section on Scan Configuration.

8.3.18 *Storage Manager*

The storage manager lets you manage storage device. DSK1: NAND FLASH only allows the users to check the store information. DSK2 shall be SD memory card. The storage manager allow SD memory card to format, dismount or make new partition.

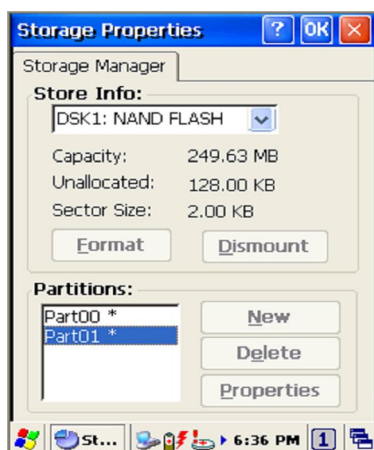


Figure 8-29 Storage Properties

1. Select the SD memory card form the storage information dropdown list.
2. To format the partitions of the selected disk, click **Dismount** button and then click **Format** button.
3. After clicking the Create **New** button, key in the new partition names. The system automatically creates new partitions to set up.
4. To delete a partition, select a partition and press the **Delete** button.
5. To see the features of the selected partitions, click the **Properties** icon.

Caution: Formatting a disk erases all data, files, and programs.

If you insert extension Micro SD memory cards, Micro SD memory shows as “SD Memory Card”.

8.3.19 *Stylus*

This screen sets **Double-Tap** sensitivity and calibration.



Figure 8-30 Stylus Properties

Double Tap

To set and test Double-Tap sensitivity:

1. Select Go to **Start** → **Settings** → **Control Panel**.
2. Activate the **Stylus** and select **Double-Tap**. Tap the grid and the color of the grid changes.
3. It automatically records the speed of the **Double-Tap**.
4. Double tap the bottom icon to test the double-tap sensitivity.
5. If the bottom icon does not change, adjust the setting using the grid icon above.

Calibration

If the PT-90 screen does not respond properly, adjust the screen with the calibration function.

To start **Calibration**:

1. Select Go to **Start** → **Settings** → **Control Panel**.
2. Activate the **Stylus** and select **Calibration** tap.
3. Press **Recalibrate** button and the adjustment process begins.

Caution: Sometimes touching the screen with the stylus triggers the right mouse function. You can solve this problem by adjusting the double touch sensitivity.

8.3.20 *System*

The **System Properties** window displays device information such as **General**, **Memory**, **Device Name** and **Copyrights**.

General information contained in the window includes operating system data such as software version, processor and memory etc.

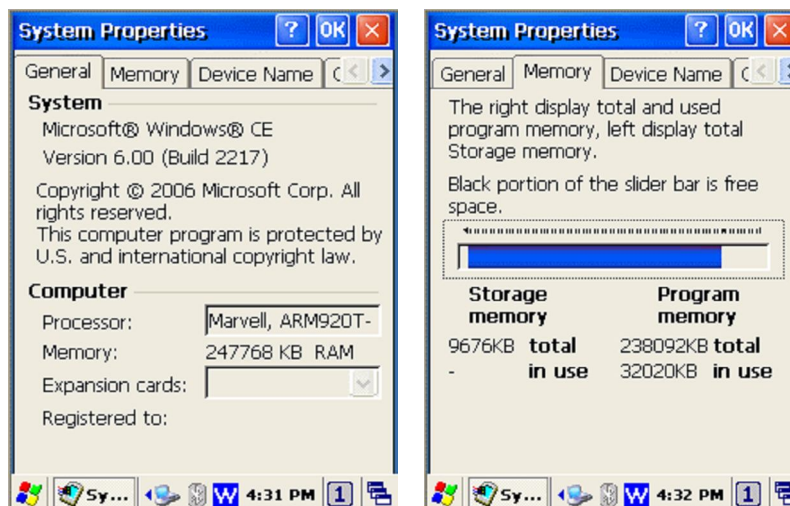


Figure 8-31 System Properties

The memory of the PT-90 is used for storage and programs. Basic memory capacity is 256MB. You can see the size of the memory cache used for running programs or storing data.

To check the **Memory**:

1. Select Go to **Start** → **Settings** → **Control Panel**.
2. Run the **System** and select the **Memory** tab.
3. The blue bar of the slider indicates the available memory capacity.
4. Left side is storage memory and the right is program memory.

The device name indicates the PT-90's partnership relation when linked to the desktop through ActiveSync.

To set up **Device Name**:

1. Select Go to **Start** → **Settings** → **Control Panel**.
2. Run the **System** and select the name of the device.
3. Enter the name of the device and its details.

8.3.21 System Information

The **System Information** properties window displays system information such as **Info** and **Clean boot**.

Info page contained in the window includes operating system data such as CPU, ROM, RAM, serial number (SN), hardware number (HW) and version details.

Clean boot page allow users to clean registry and format user partition.

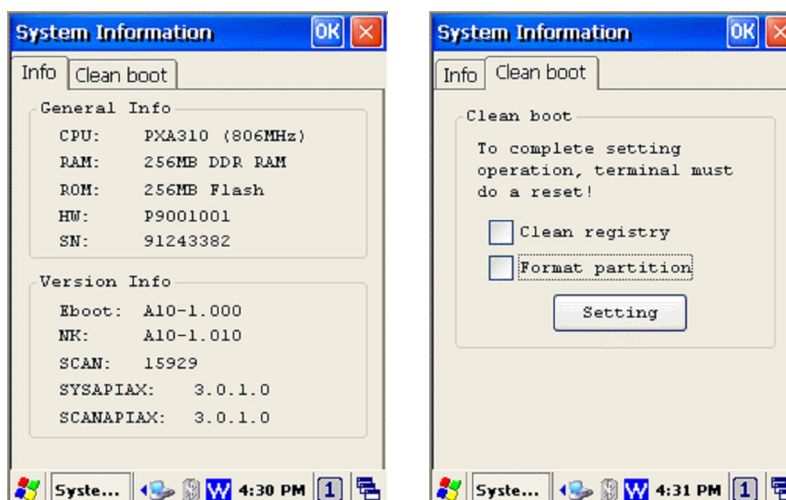


Figure 8-32 System Information

8.3.22 Timeout and Brightness

Please refer to the previous section on Timeout and Brightness.

8.3.23 Volume and Sounds

Adjust volume and select sound.

Volume

To adjust the **Volume** of the system:

1. Select Go to **Start** → **Settings** → **Control Panel**.
2. Open **Volume & Sounds** icon and select the **Volume** tab.
3. Press the left / right arrow icon or move the slide bar to adjust a volume.
4. Click all items to activate the sound such as **Events** (warning, system events), **Applications, Notifications** (alarms,reminders) , **Key clicks** and **Screen taps**.

Sounds

To set the **Sounds**:

1. Select go to **Start** → **Settings** → **Control Panel**.
2. Open **Volume & Sounds** icon and select **Sounds** tab.
3. Select an **Event** from the event list.
4. Select a sound from the event sound list.
5. To remove the sound from the selected event, choose (**None**).
6. To save the changes in another scheme, select **Save As** in another name and name the sound scheme.
7. To remove the sound scheme, select the scheme and then **Delete**.

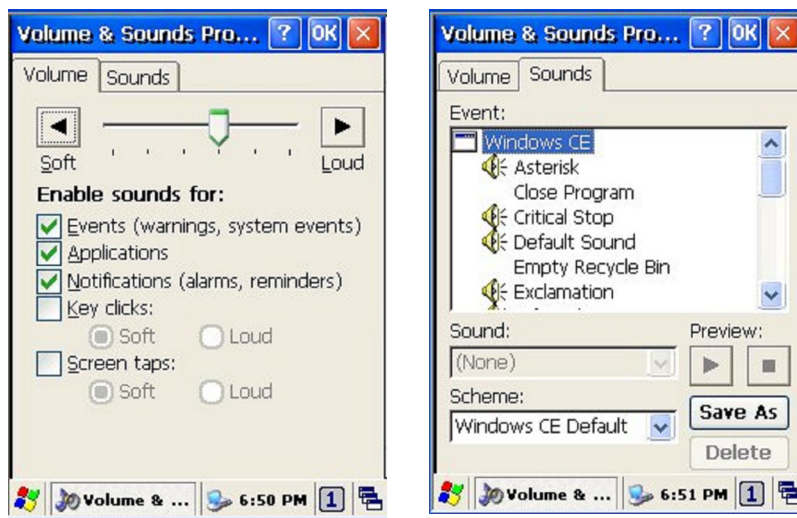


Figure 8-33 Volume & Sounds

9. Trouble Shooting

This chapter contains information on solving problems you may encounter when using the mobile computer and/or cradle. If problems occur, first carry out general checks before comparing the problem with the descriptions in this chapter.

9.1 General Checks

- Make sure everything is installed properly
- Check the power supply (including the main battery or battery pack in the mobile computer) of all devices
- Is the reading window of the mobile computer clean?
- Is the interface connector properly connected with the cable?
- Are the bar code labels readable, e.g. not damaged or poorly printed?

If the problem persists after these checks are performed, please check the problem descriptions below. If the suggested solutions below do not resolve the problem, please contact your local supplier or Argox for technical support: <http://www.argox.com>

If the PT-90 mobile computer needs repair, please ensure that the label with the serial number is present. If sending the mobile computer or cradle back to your local supplier or Argox, please use the original package to minimize the chances of damage during shipping.

9.2 Read Operation Problems

If the mobile computer has a problem reading barcode labels

Barcode reading problems

- ◆ Make sure the scanning application is loaded and operational.
- ◆ Run **Scan Configuration** program to modify barcode read setting.
- ◆ Barcode may be distorted and should be replaced.
- ◆ Battery needs recharging or replacing

9.3 Mobile Computer Problems

Mobile computer does not power on.

- ◆ Battery needs recharging or replacement.
- ◆ Insure that battery is installed correctly.

Mobile computer shuts itself down

- ◆ Adjust **Power Properties**
- ◆ Battery needs recharging.

Mobile computer will not shut off

- ◆ If the mobile computer is processing data, attach a charging cable to insure the battery isn't depleted.
- ◆ If the mobile computer is connected to AC power, disconnect.
- ◆ Perform a warm boot – **WARNING** – Unsaved data will be lost.
- ◆ Perform a cold boot – **WARNING** – Unsaved data will be lost.
- ◆ Perform a clean boot – **WARNING** – The mobile computer is reset to default settings and data will be lost.

Screen is blank

- ◆ Make sure mobile computer is powered on.
- ◆ Adjust screen brightness.

Mobile computer either doesn't respond, or responds inaccurately to touch screen input

- ◆ Calibrate touch screen.
- ◆ Perform a warm boot – **WARNING** – Unsaved data will be lost.
- ◆ Perform a cold boot – **WARNING** – Unsaved data will be lost.
- ◆ Perform a clean boot – **WARNING** – The mobile computer is reset to default settings and data will be lost.

Battery life is short

- ◆ Adjust **Power Properties** especially if peripherals are used.
- ◆ Adjust backlight of LCD or keypad.
- ◆ Replace battery pack if old (battery can be recharged approximately 500 cycles.)

"Low Backup Battery" message

- ◆ Charge mobile computer for 8 hours

10. Appendix: Updating the OS via Micro SD Card

To upgrade or reinstall the PT-90 OS via Micro SD card, you need the CE600.bin and 90Utility.cab file (available from Argox Technical Support):

Note: The file name must be “CE600.bin” and “90Utility.cab”– do not rename it.

Caution: Users files will be erased!

1. Copy file “CE600.bin” and “90Utility.cab” from the PC to the root directory of the Micro SD card
2. Insert the Micro SD Card into the PT-90
3. Plug the power adapter into the PT-90
4. Cold boot and press hot key function to update (**FN+Dot.**)
5. Press **ENT** to start upgrading.
6. Upgrading will cost 5~10 minutes.

After the image successfully update, the PT-90 automatically cold-starts with the new OS.

FEDERAL COMMUNICATIONS COMMISSION INTERFERENCE STATEMENT

This equipment has been tested and found to comply with the limits for a Class B digital device, pursuant to Part 15 of the FCC Rules. These limits are designed to provide reasonable protection against harmful interference in a residential installation. This equipment generates, uses and can radiate radio frequency energy and, if not installed and used in accordance with the instructions, may cause harmful interference to radio communications. However, there is no guarantee that interference will not occur in a particular installation. If this equipment does cause harmful interference to radio or television reception, which can be determined by turning the equipment off and on, the user is encouraged to try to correct the interference by one or more of the following measures:

- Reorient or relocate the receiving antenna.
- Increase the separation between the equipment and receiver.
- Connect the equipment into an outlet on a circuit different from that to which the receiver is connected.
- Consult the dealer or an experienced radio/TV technician for help.

CAUTION:

Any changes or modifications not expressly approved by the grantee of this device could void the user's authority to operate the equipment.

WLAN SAR value : 0.516 W/kg

