



# EZR<sup>®</sup> Zero Turn Mower

## Parts Manual

### Models

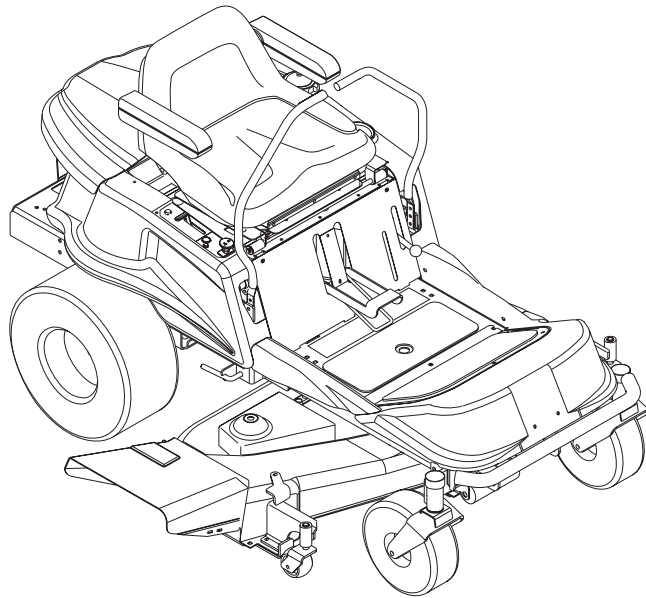
915013-EZR 1742

915014-EZR 2048

915017-EZR 1542

915018-EZR 1842

915307-EZR 1742



## THE MANUAL

---

Before you operate your unit, carefully and completely read manuals supplied with the unit. The contents will provide you with an understanding of safety instructions and controls during normal operation and maintenance.

For your safety and the safety of others always read, understand, and follow all DANGER, WARNING, and CAUTION messages found in manuals and on safety decals.

Hardware descriptions are given in decimals.

Decimals to Fractions			
.063	1/16	.563	9/16
.125	1/8	.625	5/8
.188	3/16	.688	11/16
.250	1/4	.750	3/4
.313	5/16	.813	13/16
.375	3/8	.875	7/8
.438	7/16	.938	15/16
.500	1/2	1.00	1

## SERVICE AND REPLACEMENT PARTS

---

When ordering replacement parts or making service inquiries, know the Model and Serial numbers of your unit and engine.

Numbers are located on the product registration card in the unit literature package. They are printed on a serial number label, located on the frame of your unit.

- Record Unit Model and Serial numbers here:

- Record Engine Model and Serial numbers here:

## UNAUTHORIZED REPLACEMENT PARTS

Use only Ariens replacement parts. The replacement of any part on this vehicle with anything other than an Ariens authorized replacement part may adversely affect the performance, durability, or safety of this unit and may void the warranty. Ariens disclaims liability for any claims or damages, whether warranty, property damage, personal injury or death arising out of the use of unauthorized replacement parts.

## PRODUCT REGISTRATION

---

A warranty registration card must be filled out, signed, and returned at time of purchase. This card activates the warranty. Claims meeting requirements during limited warranty period will be honored.

## YOUR SATISFACTION IS IMPORTANT

---

**Questions? Please follow these helpful steps:**

1. Refer to the manuals supplied with your unit.  
They will guide you through safe and proper operation and maintenance.  
They contain specifications on your unit.  
If your questions are not answered in these manuals, go to step number two.
2. Contact Your Dealer.  
Our dealers will be happy to supply any service or advice required to keep your unit operating at peak efficiency.  
A factory trained staff is available to support your equipment needs. They stock genuine Ariens parts and lubricants manufactured with the same precision and skill as the original.  
If your questions are not resolved by the support staff, ask for the manager or owner.  
When contacting your Dealer supply your model and serial numbers.

### TO SPEED PARTS ORDERING:

1. Know the model and serial numbers of your unit.
2. Know the part number required.
3. Know the quantity required.
4. Know the part description.

## MODELS

---

### Model 915013 (EZR 1742)

17.0 HP Briggs & Stratton with 42" Mower  
Serial No. 005904 and up

### Model 915014 (EZR 2048)

20.0 HP Briggs & Stratton with 48" Mower  
Serial No. 001103 and up

### Model 915017 (EZR 1542)

15.0 HP Briggs & Stratton with 42" Mower  
Serial No. 000101 and up

### Model 915018 (EZR 1842)

18.0 HP Briggs & Stratton with 42" Mower  
Serial No. 000101 and up

### Model 915307 (EZR 1742)

17.0 HP Briggs & Stratton with 42" Mower  
Serial No. 000114 and up

## TABLE OF CONTENTS

---

### DECALS

---

Decals . . . . . 4

### POWER PLANT

---

Clutch Shaft-Hydro . . . . . 6  
Parking Brake and Dump Valves . . . . . 7  
HydroStatic Transaxle-Right . . . . . 8  
HydroStatic Transaxle-Left . . . . . 10  
Transaxles and Wheels . . . . . 12  
Engine, Exhaust and Belts . . . . . 15  
Idlers . . . . . 16

### MAIN FRAME

---

Frame . . . . . 17  
Seat and Support . . . . . 18  
Fuel Tank . . . . . 19  
Front Axle . . . . . 20  
Bumpers . . . . . 21  
Cover Assembly, Solenoid and Switches . . . . . 22

### OPERATOR CONTROLS

---

Controls . . . . . 24  
Attachment Lift . . . . . 26  
Hanger Arm (48" Deck Only) . . . . . 27

### ELECTRICAL SYSTEM

---

Continuity Diagrams . . . . . 28  
Wiring Diagrams . . . . . 29

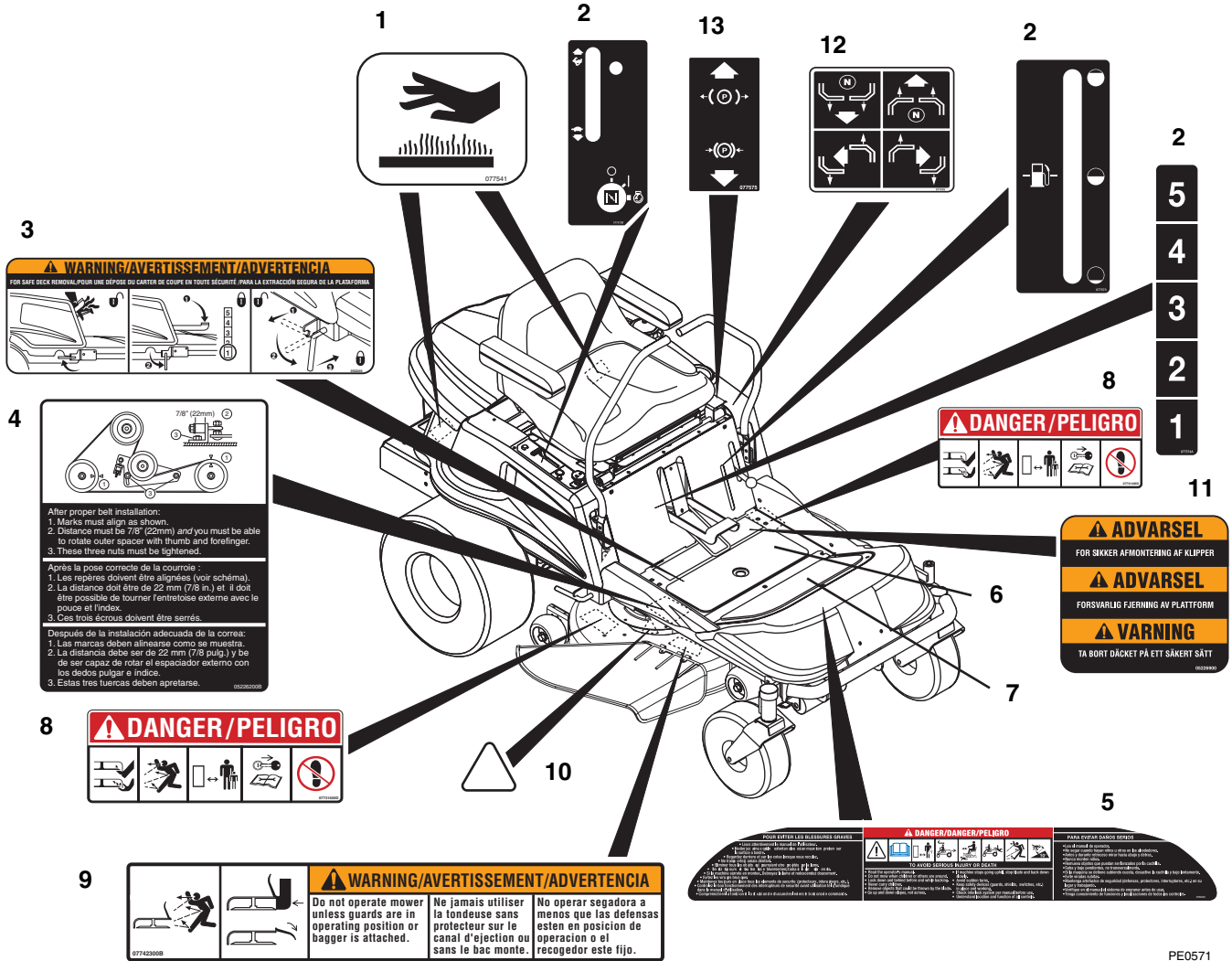
### MOWER DECKS

---

42" Mower Deck . . . . . 30  
42" Mower Brackets and Rollers . . . . . 31  
42" Mower Spindle . . . . . 32  
48" Mower Spindle . . . . . 34  
48" Mower Pan . . . . . 36

# DECALS-SAFETY

Model 915013, 014, 017, 018, 307

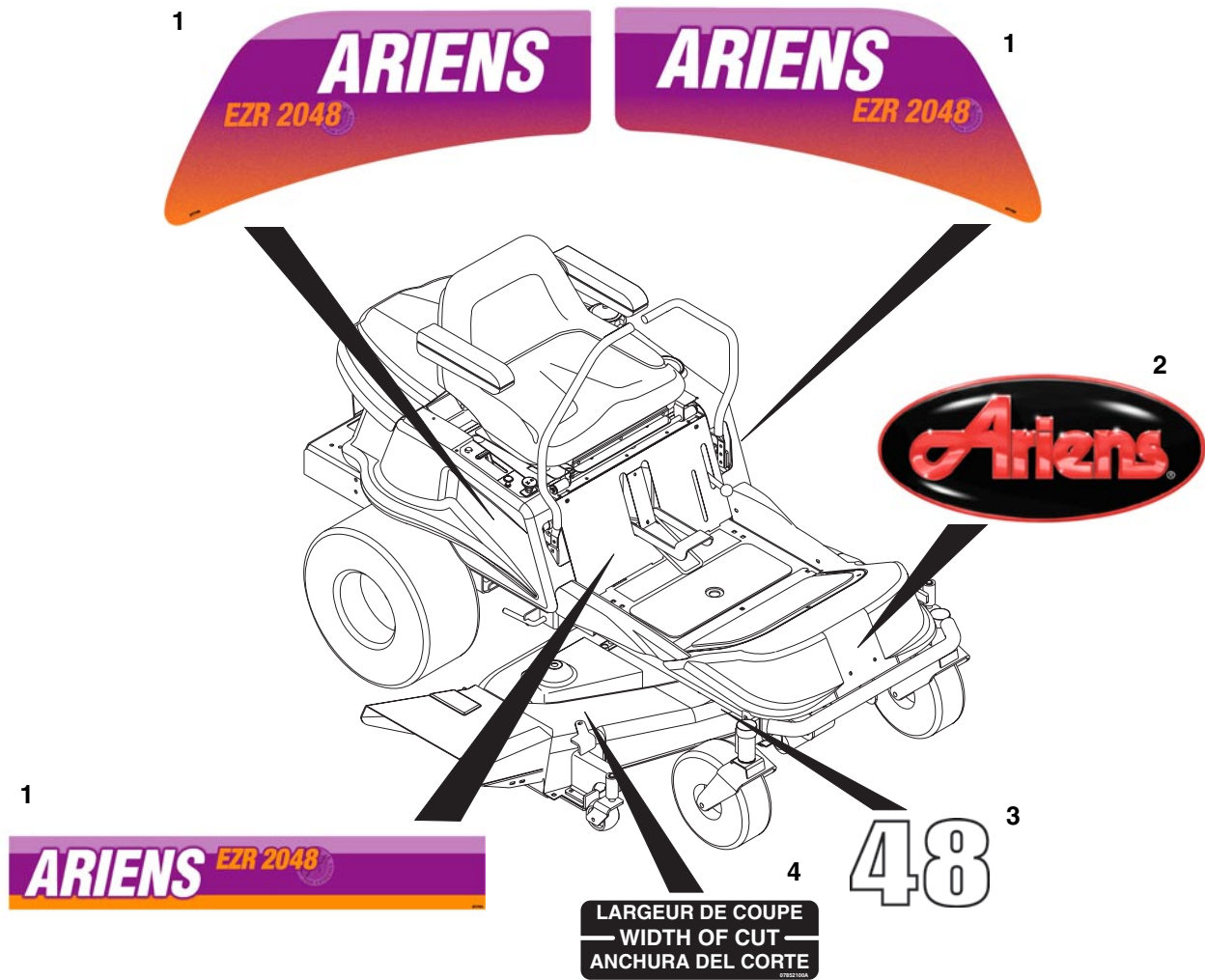


Item	Part No.	Qty.	Description
1	07754100	1	Decal-Hot Surface (013, 017, 307)
	07754100	2	Decal-Hot Surface (014, 018)
2	61518400	1	Decal-Instructional Set
3	05224000	1	Decal-Safe Deck Removal
4	05226200	1	Decal, Belt Diagram (013, 017, 018, 307)
5	07757800	1	Decal-Bilingual Danger (013, 017)
	07800000	1	Decal-Bilingual Danger (014, 018, 307)
6	01556700	1	Non-Skid Cover
7	01528000	1	Non-Skid Cover (013, 017)
	01556600	1	Non-Skid Cover (014, 018, 307)
8	07731400	2	Decal, Mower Pan Head Danger
9	07742300	1	Decal, Warning
10	05226300	1	Decal, Blade Alignment
11	05226900	1	Decal- Safe Deck Removal, Export (307)
12	07757600	1	Decal-Instructional Steering
13	07757500	1	Decal, Parking Brake Lever

PE0571

# DECALS-STYLE

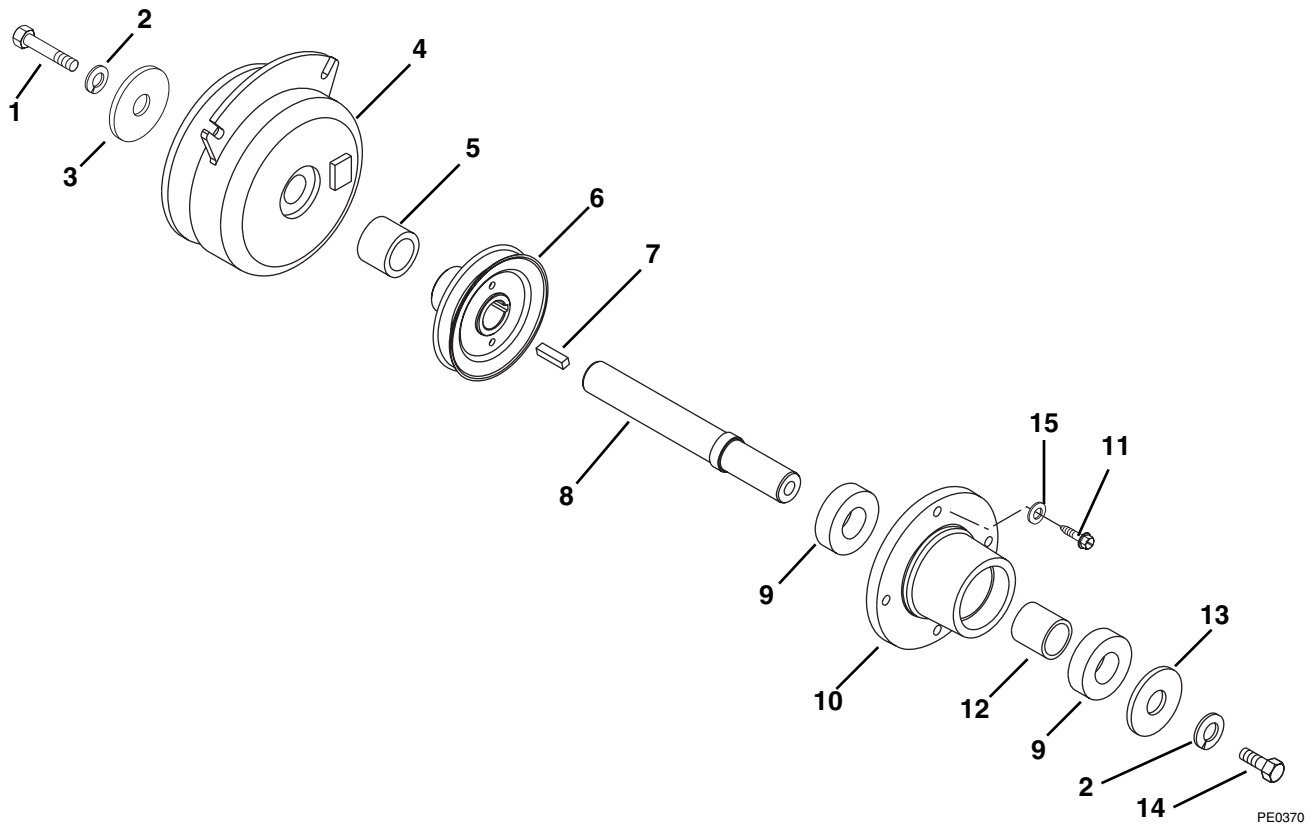
Model 915013, 014, 017, 018, 307



Item	Part No.	Qty.	Description
1	61514400	1	Decal, Set EZR 2048 (014)
	61514300	1	Decal, Set EZR 1742 (013, 307)
	61517700	1	Decal, Set EZR 1542 (017)
	61517800	1	Decal, Set EZR 1842 (018)
2	07746400	1	Decal, Ariens Jewel Oval
3	05233300	1	Decal, 48 (014)
	05233200	1	Decal, 42 (013, 017, 018, 307)
4	07852100	1	Decal, Width of Cut (014)

# CLUTCH SHAFT-HYDRO

Model 915013, 014, 017, 018, 307

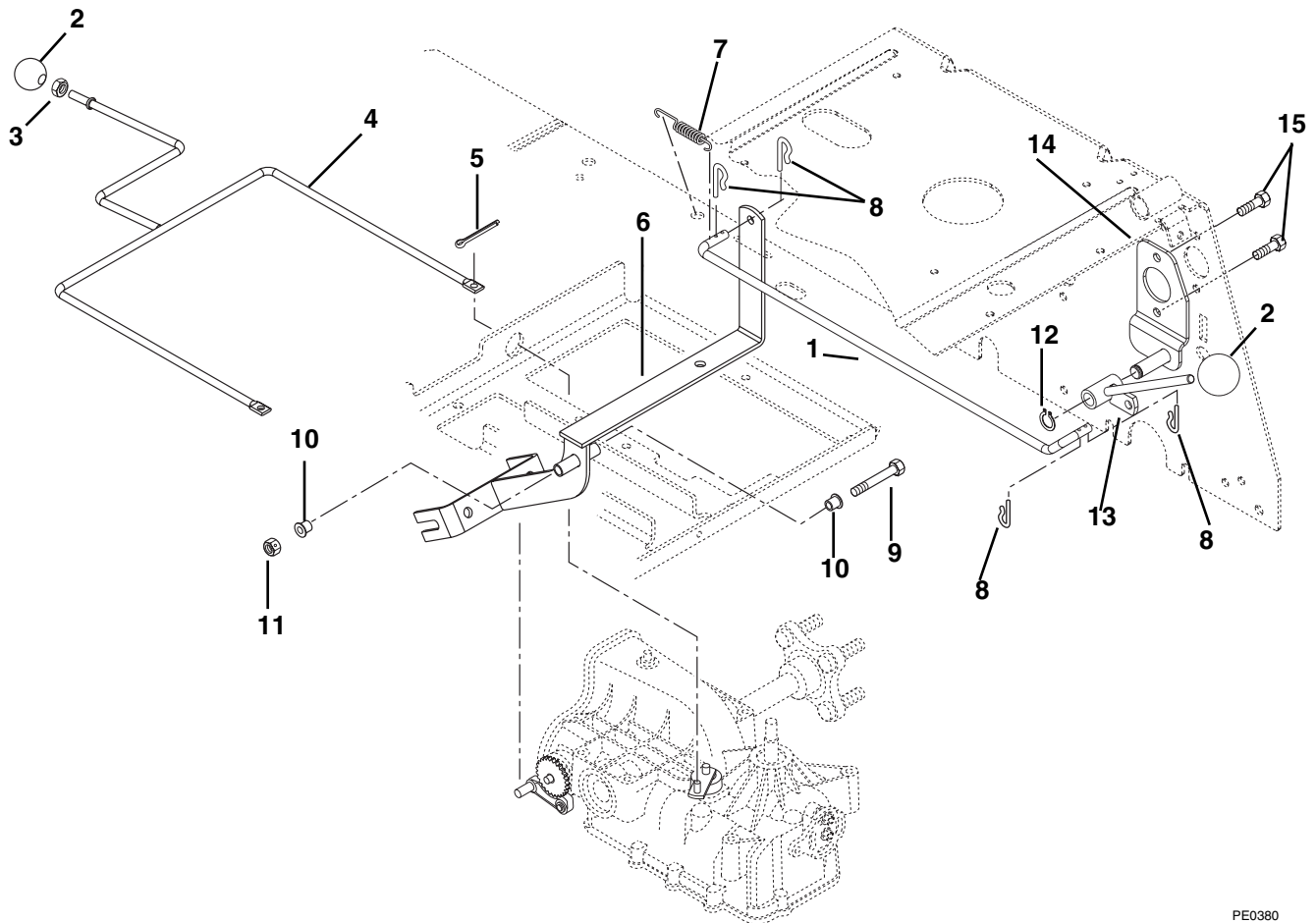


Item	Part No.	Qty.	Description
1	05965600	1	Bolt-Hex .44-20 x 1.50 Grade 5 (014)
	05964600	1	Bolt-Hex .44-20 x 2.50 Grade 5 (013, 017, 018, 307)
2	06309300	1	Washer-Locking .44 x .109
3	06443600	1	Washer-Flat-Steel .469 x 2.00 x .25
4	03357900	1	Clutch-Electric/Brake (014)
	03643100	1	Clutch-Electric/Brake (013, 017, 018, 307)
5	01531400	1	Spacer 1.004 x 1.500 x .740 (014)
6	01558100	1	Sheave-Jackshaft 4.50 (014)
	01557500	1	Sheave- Jackshaft 4.50 (013, 017, 018, 307)
7	06602200	1	Key-Square .25 x 1.00 x .25 SAE (014)
	06602700	1	Key-Square .25 x 1.00 x .25 SAE (013, 017, 018, 307)
8	01558000	1	Shaft-Jack (014)
	01557600	1	Shaft-Jack (013, 017, 018, 307)
9	05421500	2	Bearing-Ball .984 x 2.04 x .59
10	00506751	1	Housing-Transmission Spindle
11	07414400	4	Screw-Tapping .31-18 x .75 Hex Washer Head
12	00506800	1	Spacer 1.00 x .253 x 1.26
13	06443500	1	Washer-Flat-Steel .463 x 1.38 x .25
14	05964500	1	Bolt-Hex .44-20 x 1.00 Grade 5
15	06437500	4	Washer-Flat-Steel .328 x 1.00 x .094

PE0370

# PARKING BRAKE AND DUMP VALVES

Model 915013, 014, 017, 018, 307

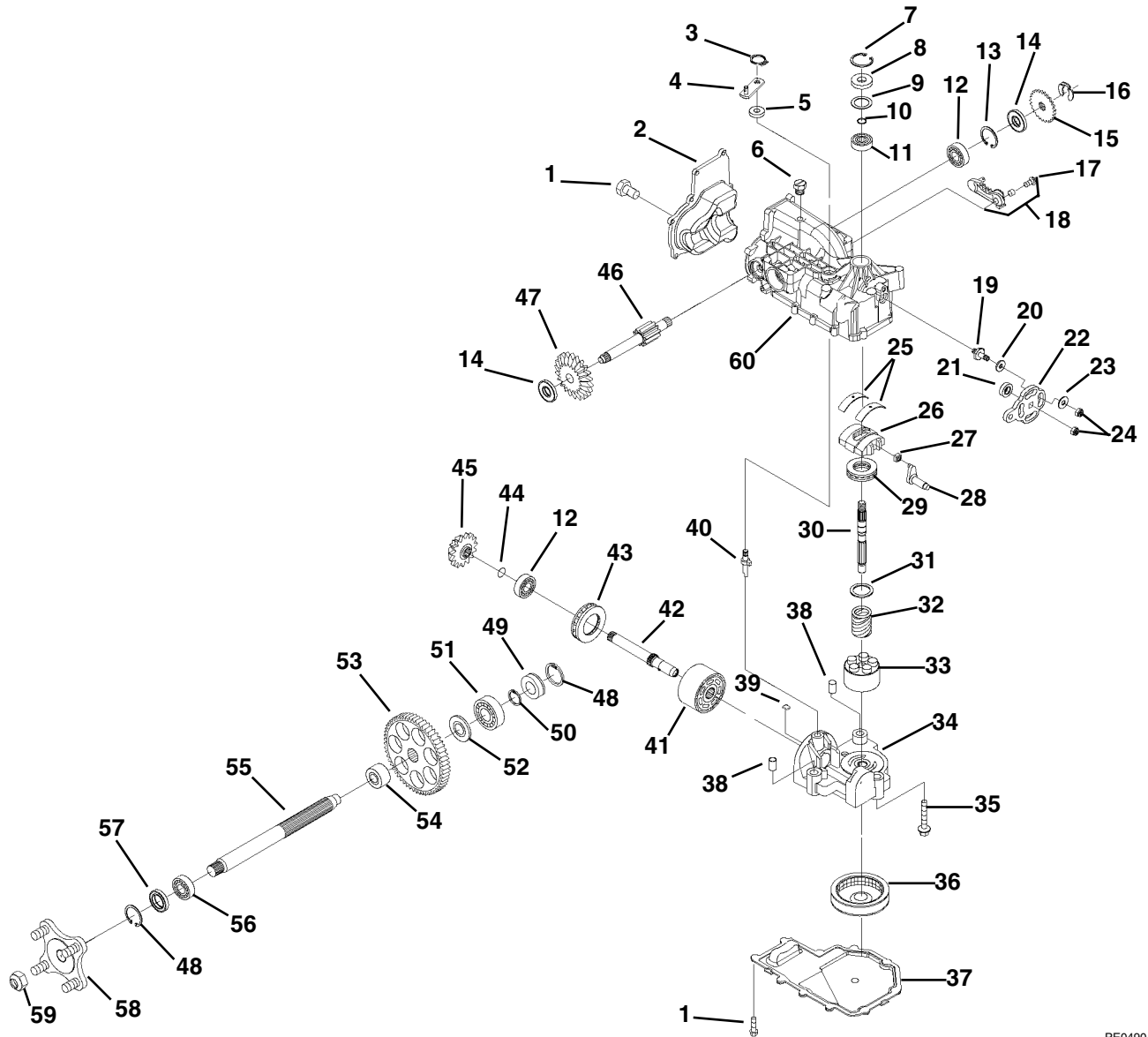


PE0380

Item	Part No.	Qty.	Description
1	01555600	1	Rod-Brake
2	07515900	2	Knob
3	06529200	1	Nut-Hex .31-18
4	01540100	1	Dump Valve Weldment
5	06713500	2	Pin-Cotter .09 x .75
6	01545300	1	Brake Arm Weldment
7	08325200	1	Spring-Tension .051 x .60 x 2.25
8	06713500	4	Pin-Hair Internal .08 x .18 x 1.18
9	05966300	1	Bolt-Hex .25-20 x 3.00
10	05521000	2	Bushing-Flange .257 x .38 x 1.080
11	06529700	1	Nut-Locking-Center .25-20
12	05717100	1	Ring-Retaining External .50 x .050
13	01555900	1	Lever-Brake
14	01555800	1	Pivot-Brake Lever
15	05946900	2	Bolt-Hex .31-18 x 1.00 Grade 5

# HYDROSTATIC TRANSAXLE-RIGHT

Model 915013, 014, 017, 018, 307



PE0490

Item	Part No.	Description
1	50437	Screw .25-20 x .75
2	50891RM	Cover-Back
3	44870	Ring-Retaining
4	50270	Arm-Bypass
5	45074	Seal-Lip
6	9005200-5600	Plug-Plastic
7	2003052	Ring-Retaining
8	9008000-0128	Seal-Lip
9	2003018	Spacer
10	2003016	Ring-Wire Retaining
11	2003043	Bearing-Ball

Part Numbers listed on this page are Hydro Gear part numbers and are to be ordered or purchased from the nearest Hydro Gear Dealer, which may be found in the Yellow Pages of the Telephone Directory.



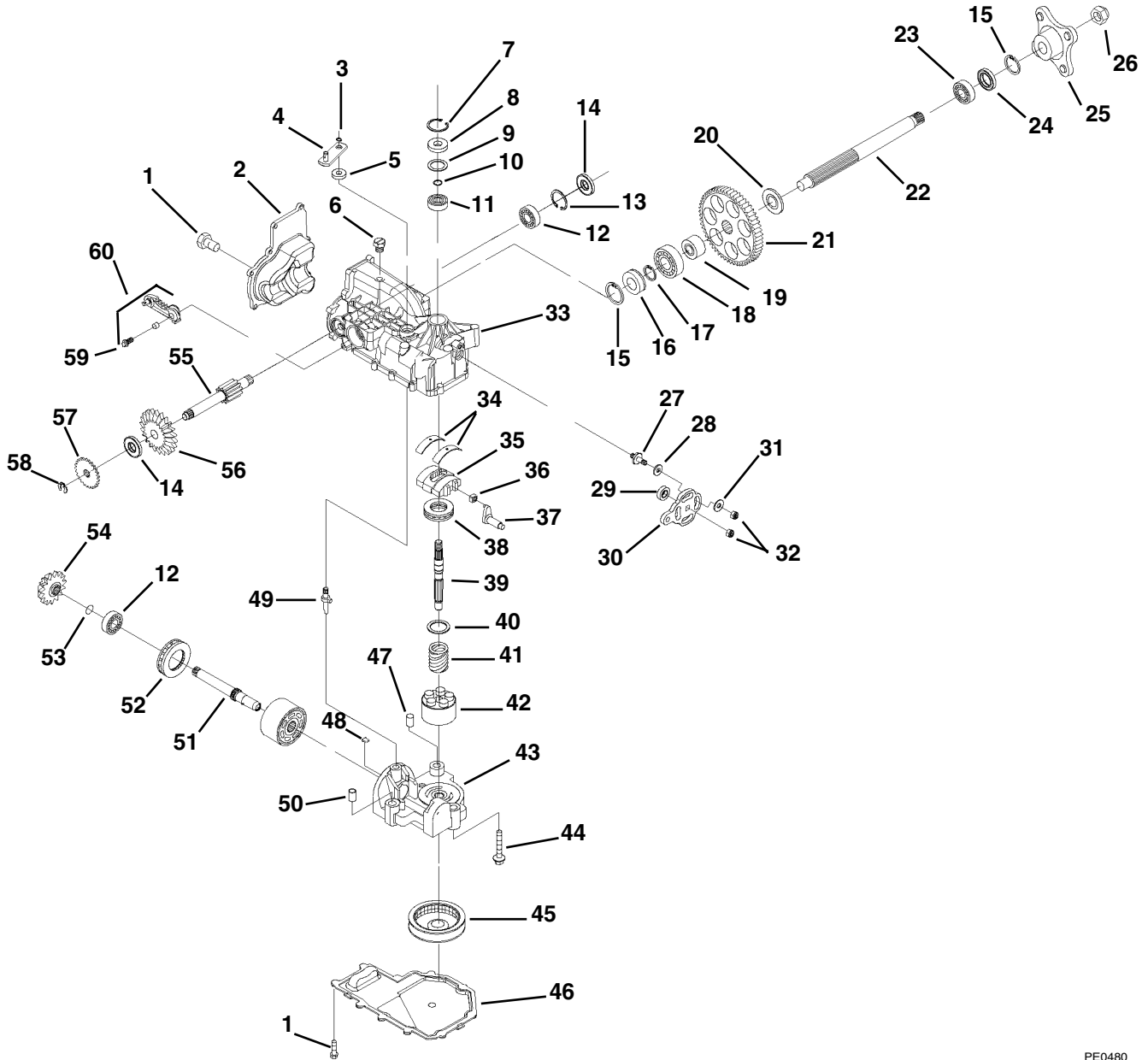
# HYDROSTATIC TRANSAXLE-RIGHT

Model 915013, 014, 017, 018, 307

Item	Part No.	Description
12	50315	Bearing-Ball
13	50329	Ring-Retaining
14	50735	Seal-Brake Shaft
15	50754	Brake Disc
16	70394	Kit-Retaining Ring
17	51076	Screw-Hex Washer Head 1/4-20 x 7/8
18	70392	Service Assembly-Right Hand Brake Arm
19	50426	Stud-Short 5/16-24
20	50281	Friction Puck
21	90080000-0126	Seal-Lip
22	50749	Arm-Control
23	44130	Washer
24	50317	Nut
25	2003023	Cradle Bearing
26	2003087	Variable Swashplate
27	2000015	Slot Guide
28	50807	Arm-Trunnion
29	50551	Bearing-Thrust 30 x 52 x 13
30	50005	Shaft-Input
31	2003017	Washer-Block Thrust
32	2003014	Spring-Block
33	70331	Assembly-Cylinder Block 10cc
34	70340	Assembly-Center Section
35	50016	Screw
36	50990	Filter
37	50890RM	Housing-Lower
38	50002	Pin-Alignment
39	2003554	Bypass Plate
40	2003555	Bypass Actuator
41	70082	Assembly-Cylinder Block 21cc
42	50757	Shaft-Motor
43	50552	Bearing-Thrust 42 x 68 x 16
44	2000022	Ring-Wire Retaining
45	50744	Gear-Bevel 14T
46	70393	Kit-Brake Shaft
47	50745	Gear-Bevel 19T
48	50760	Ring-Retaining - Axle
49	50995	Seal-Plug - Side
50	50759	Ring-Retaining - Axle
51	50743	Bearing-Ball 20 x 47 x 14
52	50942-2	Bushing-Axle
53	50746	Gear-Spur 53T
54	50942-1	Bushing-Axle
55	50748	Shaft-Axle
56	50740	Bearing-Ball 25 x 47 x 12
57	50751	Seal
58	70314	Assembly-Hub
59	50863	Nut-Hex 3/4-16
60	70329	Housing-Upper Assembly

# HYDROSTATIC TRANSAXLE-LEFT

Model 915013, 014, 017, 018, 307



PE0480

Item	Part No.	Description
1	50437	Screw 1/4-20 x .75
2	50891RM	Cover-Back
3	44870	Ring-Retaining
4	50270	Arm-Bypass
5	45074	Seal-Lip
6	9005200-5600	Plug-Plastic
7	2003052	Ring-Retaining
8	9008000-0128	Seal-Lip
9	2003018	Spacer
10	2003016	Ring-Wire Retaining

Part Numbers listed on this page are Hydro Gear part numbers and are to be ordered or purchased from the nearest Hydro Gear Dealer, which may be found in the Yellow Pages of the Telephone Directory.

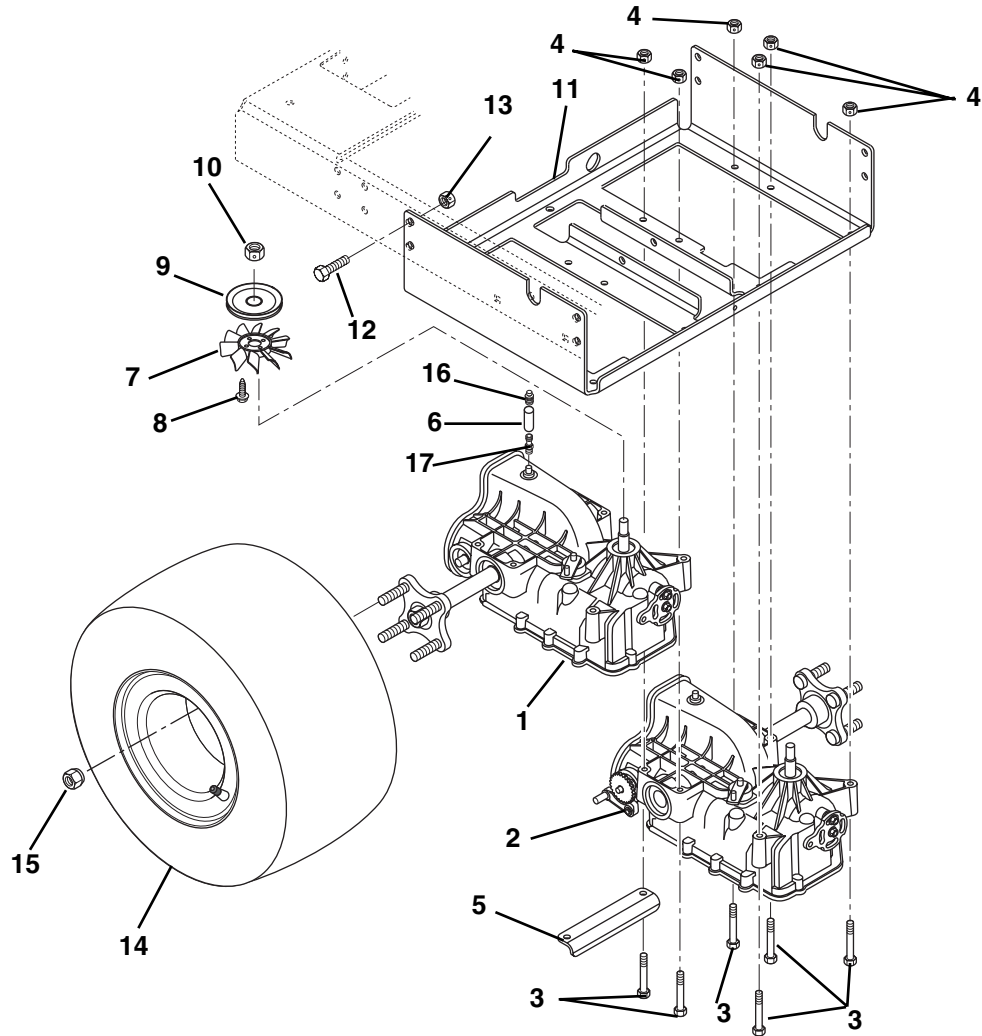
# HYDROSTATIC TRANSAXLE-LEFT

Model 915013, 014, 017, 018, 307

Item	Part No.	Description
11	2003043	Bearing-Ball
12	50315	Bearing-Ball
13	50329	Ring-Retaining
14	50735	Seal-Brake Shaft
15	50760	Ring-Retaining - Axle
16	50995	Seal-Plug - Side
17	50759	Ring-Retaining - Axle
18	50743	Bearing-Ball 20 x 47 x 14
19	50942-1	Bushing-Axle
20	50746	Gear-Spur 53T
21	50942-2	Bushing-Axle
22	50748	Shaft-Axle
23	50740	Bearing-Ball 25 x 47 x 12
24	50751	Seal
25	70314	Assembly-Hub
26	50863	Nut-Hex 3/4-16
27	50426	Stud-Short 5/16-24
28	50281	Friction Puck
29	90080000-0126	Seal, Lip
30	50749	Arm-Control
31	44130	Washer
32	50317	Nut
33	70329	Assembly-Upper Housing
34	2003023	Bearing-Cradle
35	2003087	Variable Swashplate
36	2000015	Slot Guide
37	50807	Arm-Trunnion
38	50551	Bearing-Thrust 30 x 52 x 13
39	50005	Shaft-Input
40	2003017	Washer-Block Thrust
41	2003014	Spring-Block
42	70331	Assembly-Cylinder Block 10cc
43	70340	Assembly-Center Section
44	50016	Screw
45	50990	Filter
46	50890RM	Housing-Lower
47	50002	Pin-Alignment
48	2003554	Bypass Plate
49	2003555	Bypass Actuator
50	70082	Assembly-Cylinder Block 21cc
51	50757	Shaft-Motor
52	50552	Bearing-Thrust 42 x 68 x 16
53	2000022	Ring-Wire Retaining
54	50744	Gear-Bevel 14T
55	70393	Kit, Brake Shaft
56	50745	Gear-Bevel 19T
57	50754	Brake Disc
58	70394	Ring-Retaining
59	51076	Screw-He-Washer-Head 1/4-20 x 7/8
60	70391	Assembly-Left Hand Brake Arm

# TRANSAXLE AND WHEELS

Model 915013, 014, 017, 018, 307



PE0221

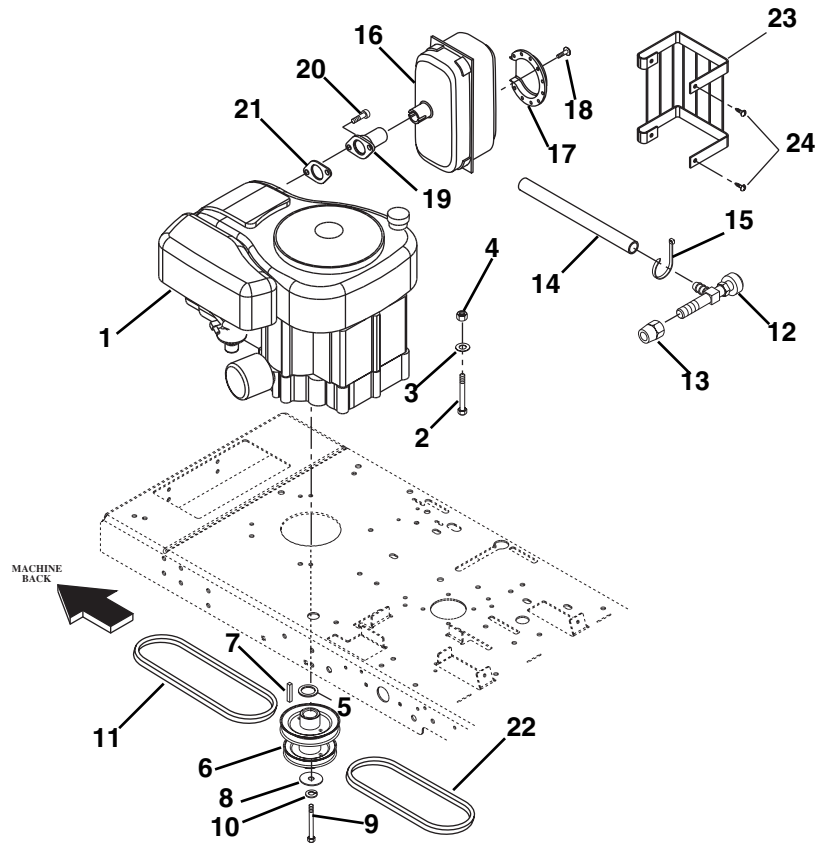
Item	Part No.	Qty.	Description
1	01540300	1	Transaxle Hydro-Gear Right Hand
2	01540400	1	Transaxle Hydro-Gear Left Hand
3	05952600	12	Bolt-Hex .31-18 x 2.50 Grade 5
4	06529800	12	Nut-Locking-Center .31-18
5	01543900	1	Transaxle Bracket
6	01543100	2	Hose-Vent
7	03570000	2	Fan
8	07413000	8	Screw-Tapping 10-24 x .75 Hex Washer Head
9	07321400	2	Sheave-Transaxle
10	06517200	2	Nut-Locking-Top .50-20
11	01540900	1	Transmission Cradle
12	05959400	8	Bolt-Hex .38-16 x .75 Grade 5
13	06529600	8	Nut-Locking-Center .38-16
14	07144600	2	Tire/Wheel 18 x 8.50-8
	07144900	AR	Rim for 18 x 8.50-8 Tire
	07145100	AR	Tire 18 x 8.50-8
15	06535000	8	Nut-Lug .50-20
16	07026400	1	Cap-Vent 1/2" Hydro-Gear
17	07026300	1	Fitting-Straight 1/2" O-Ring Hydro-Gear

# NOTES

---

# ENGINE, EXHAUST AND BELTS

Model 915013, 017, 307

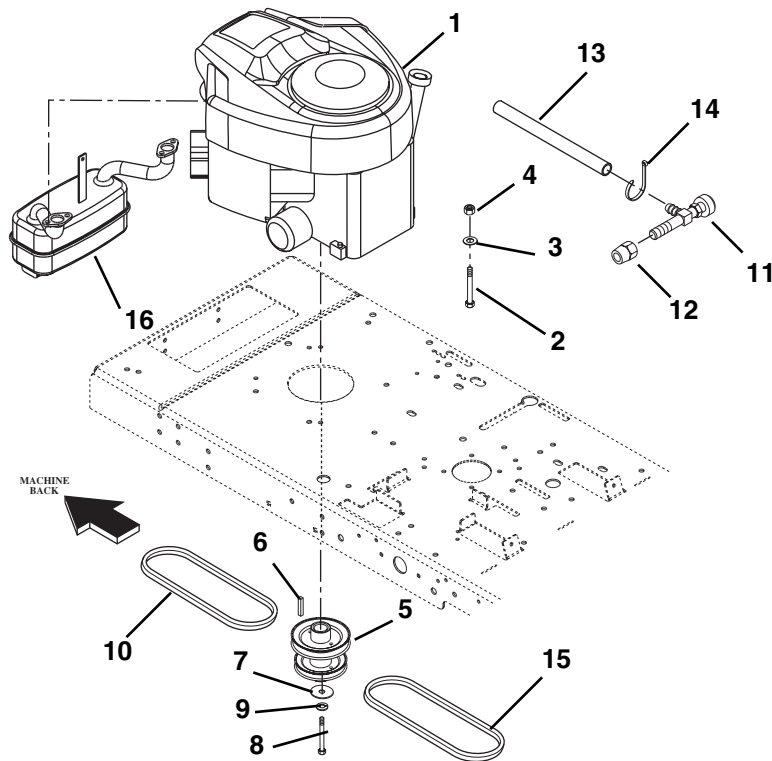


PE0392

Item	Part No.	Qty.	Description
1	08259000	1	Engine-Briggs & Stratton Intek Single 17HP (013, 307)
	08260500	1	Engine, Briggs & Stratton Intek Single 15HP (017)
2	05952400	4	Bolt-Hex .31-18 x 1.50 Grade 5
3	06437500	4	Washer-Flat-Steel .328 x 1.00 x .094
4	06530200	4	Nut-Locking .312-18
5	01558200	1	Spacer
6	01557700	1	Engine Sheave 4.50
7	06602600	1	Key-Square .25 x 2.50 x .25
8	06443600	1	Washer-Special .469 x 2.000 x .250
9	05965700	1	Bolt-Hex .44-20 x 3.00 Grade 5
10	06309300	1	Washer-Lock .44 x .109
11	07212300	1	V-Belt, Transmission Drive
12	03493200	1	Cock, Oil Drain
13	03493100	1	Adapter, Oil Drain
14	01523400	1	Tube, Oil Drain
15	07517300	1	Cable Tie
16	01523000	1	Muffler-Briggs & Stratton 496652
17	01523200	1	Deflector-Briggs & Stratton 222573
18	01523300	3	Screw-Briggs & Stratton 93705
19	01523100	1	Muffler Adaptor Pipe
20	05933100	2	Screw-Cap .31-18 x .75
21	03652700	1	Gasket
22	07235700	1	Belt-5L x 47.1 Engine to Jackshaft
23	01528200	1	Muffler Guard (307)
24	07411600	2	Screw-Tapping .250-20 x .37 (307)

# ENGINE, EXHAUST AND BELTS

Model 915014, 018

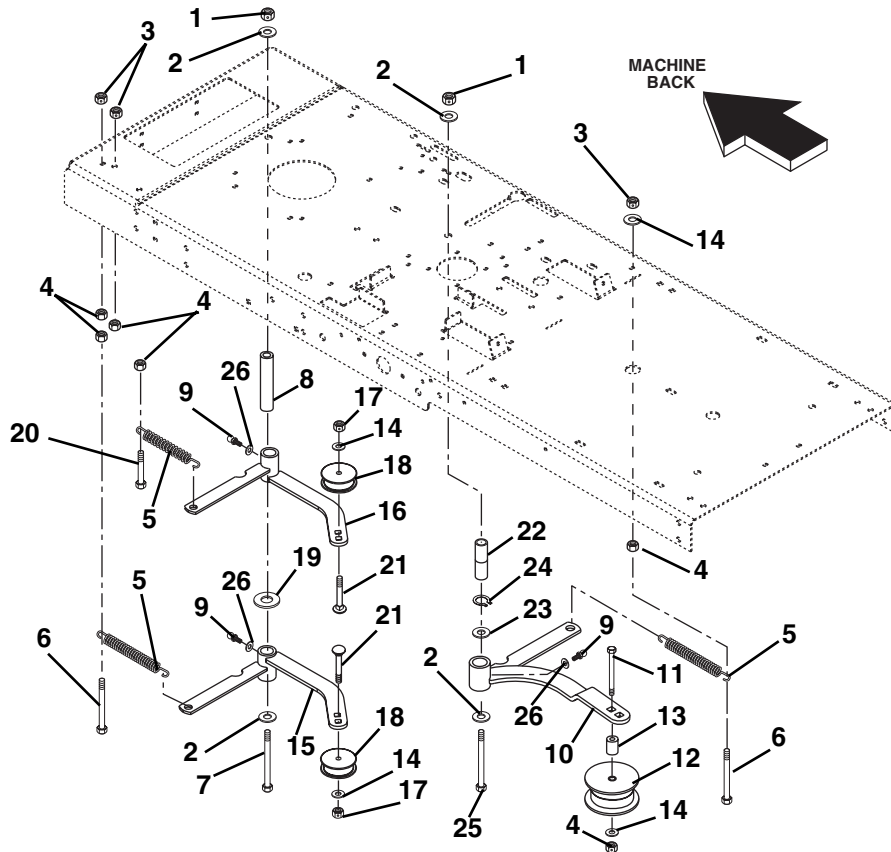


PE0660

Item	Part No.	Qty.	Description
1	08259200	1	Engine, Briggs & Stratton Intek 20HP V Twin (014)
	08259100	1	Engine, Briggs & Stratton Intek 18HP V Twin (018)
2	05952400	4	Bolt-Hex .31-18 x 1.50 Grade 5
3	06437500	4	Washer-Flat-Steel .328 x 1.00 x .094
4	06530200	4	Nut-Locking .312-18
5	01557700	1	Engine Sheave 4.50
6	06602600	1	Key-Square .25 x 2.50 x .25
7	06443600	1	Washer-Special .469 x 2.000 x .250
8	05965700	1	Bolt-Hex .44-20 x 3.00 Grade 5
9	06309300	1	Washer-Lock .44 x .109
10	07212300	1	V-Belt, Transmission Drive
11	03493200	1	Cock, Oil Drain
12	03493100	1	Adapter, Oil Drain
13	01523400	1	Tube, Oil Drain
14	07517300	1	Cable Tie
15	07235700	1	Belt-5L x 47.1 Engine to Jackshaft
16	01557000	1	Muffler Assembly

# IDLERS

Model 915013, 014, 017, 018, 307



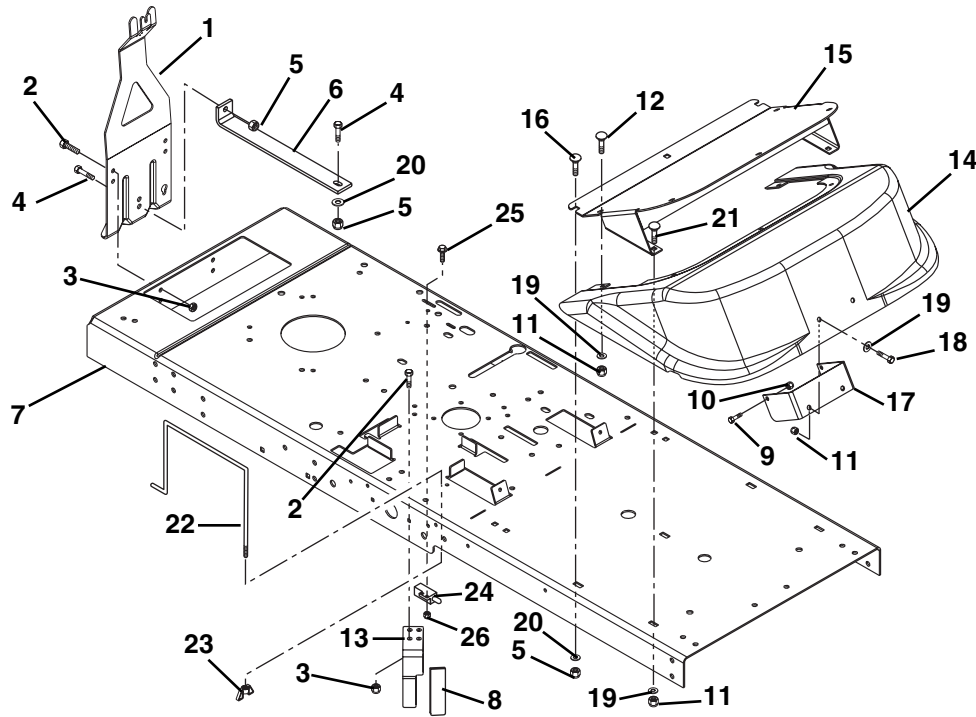
PE0402

Item	Part No.	Qty.	Description
1	06536300	2	Nut-Locking, Center .50-13
2	06442000	4	Washer-Flat, Steel .563 x 1.38 x .109
3	06529600	3	Nut-Locking, Center .38-16
4	06529400	4	Nut-Hex .38-16
5	08336100	3	Spring-Extension
6	05965400	2	Bolt-Hex .38-16 x 4.00 Grade 5
7	05964100	1	Bolt-Hex .50-13 x 5.50 Grade 5
8	01557200	1	Spacer-Idler Arm
9	07012600	3	Fitting-Lube .25-20 x .256
10	01582700	1	Weldment-Idler Arm
11	05970400	1	Bolt-Hex .38-16 x 4.50 (014)
	05958400	1	Bolt-Hex .38-16 x 2.50 (013, 017, 018, 307)
12	07324700	1	Idler-4.0 inch Diameter
13	01544100	1	Spacer-Idler 48 inch (014)
14	06436200	4	Washer-Flat, Steel .406 x .812 x .065
15	01557300	1	Idler Arm Weldment Transaxle
16	01557400	1	Weldment-Jackshaft Idler Arm
17	06537200	2	Nut-Jam Lock .38-16
18	07324600	2	Idler-3.5 inch Diameter
19	06445500	1	Washer-Hardened
20	05958500	1	Bolt-Hex .38-16 x 1.75 Grade5
21	06215300	2	Bolt-Round Head Square Shank .38-16 x 1.50
22	01548400	2	Spacer-Idler
23	06436900	1	Washer-Flat-Steel .88 x 1.25 x .62
24	05702600	1	Ring-Retaining External .875 x .042
25	05962300	1	Bolt-Hex .50-13 x 4.50 Grade 5
26	06442300	3	Washer-Flat-Steel .250 x .562 x .049



# FRAME

Model 915013, 014, 017, 018, 307

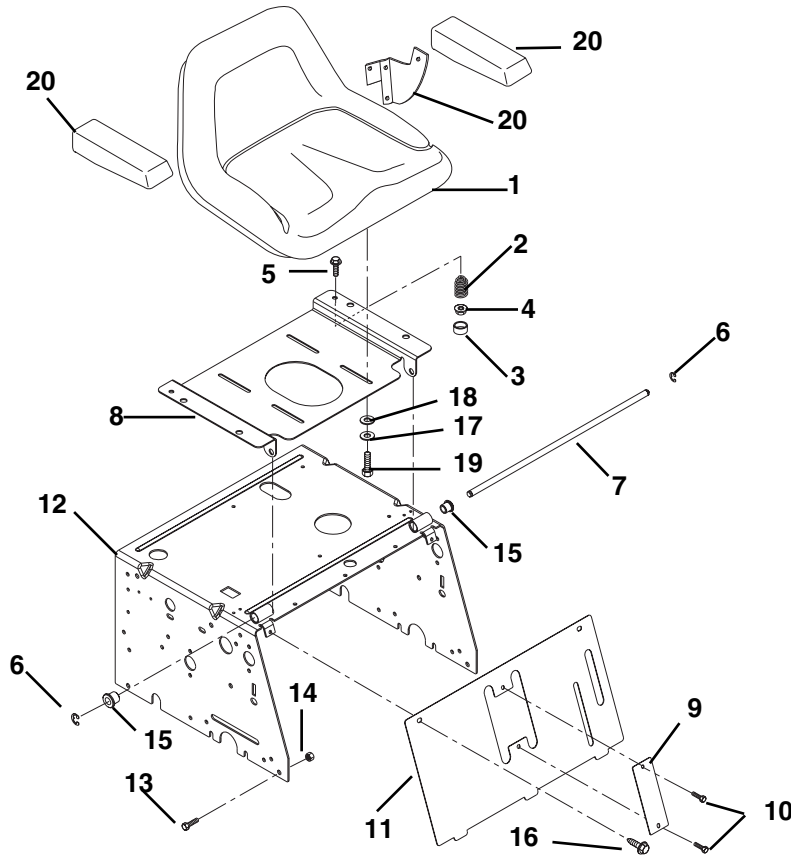


PE0411

Item	Part No.	Qty.	Description
1	01553559	1	Hitch-Trailer (013, 014, 018, 307)
	01562859	1	Bracket, Trailer Hitch (017)
2	05947000	6	Bolt-Hex .31-18 x .75 Grade 5
3	06529800	6	Nut-Locking-Center .312-18
4	05948700	2	Bolt-Hex .38-16 x 1.00 Grade 5
5	06529600	5	Nut-Locking-Center .38-16
6	01541200	1	Brace
7	01553759	1	Frame
8	07509400	1	Grip
9	05946800	2	Bolt-Hex .25-20 x .75 Grade 5
10	06531000	2	Nut-Locking-Nylon .250-20 Grade 2 (014, 018, 307)
	06529700	4	Nut-Locking-Center .250-20 Grade 2 (013, 017)
11	06530200	9	Nut-Locking-Nylon .312-18 Grade 5 (014, 018, 307)
12	06220800	5	Bolt-Round Head Square Short Neck .31-18 x .75 Grade 5 (014, 018, 307)
13	01557851	1	Clutch Stop
14	01550059	1	Shroud-Footrest (014, 018, 307)
15	01552851	1	Weldment-Footrest (014, 018, 307)
	01538059	1	Footrest (013, 017)
16	06223900	3	Bolt-Round Head Square Neck .38-16 x .75 Grade 5
17	01554351	1	Bracket-Footrest (014, 018, 307)
	01526759	1	Bracket-Footrest (013, 017)
18	05947000	2	Bolt-Hex .31-18 x .75 Grade 5 (014, 018, 307)
	06220600	2	Bolt-Round Head Square Neck .25-20 x .50 Grade 5 (013, 017)
19	06435700	9	Washer-Flat-Steel .375 x .875 x .083 (014, 018, 307)
20	06436200	4	Washer-Flat-Steel .406 x .812 x .065
21	06216100	2	Bolt-Round Head Square Neck .312-18 x 1.00 Grade 5 (014, 018, 307)
22	01533400	1	Rod-Battery
23	06537500	1	Nut-Locking-Wing .250-20
24	03657100	1	Switch-Single Pole N.O.
25	07049200	2	Bolt-Hex 10-24 x .75 Flat Washer Head
26	06536000	2	Nut-Locking-Nylon 10-24 with Insert

# SEAT AND SUPPORT

Model 915013, 014, 017, 018, 307

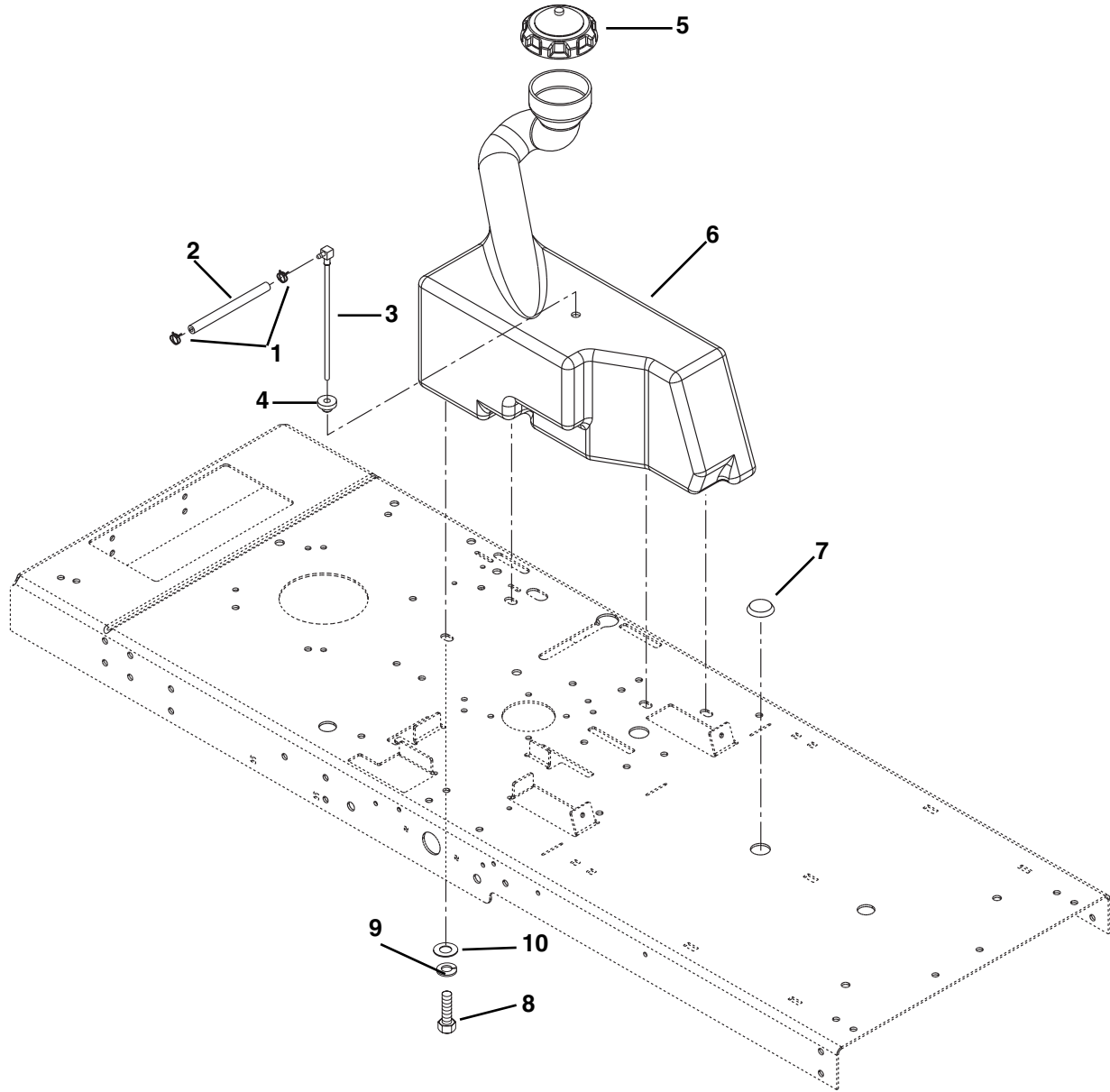


PE0420

Item	Part No.	Qty.	Description
1	01546100	1	Seat
2	00571600	2	Spring-Compression 2.9L x 2.02 OD
3	00571500	2	Boot-Seat Spring
4	06534800	2	Nut-Locking, Flange .375-16
5	07028500	2	Bolt-Hex Flanged Whiz Lock Head .38-16 x .75
6	05710200	2	Ring-Retaining-External .500 x .042
7	01168900	1	Axle-Front
8	01554451	1	Plate-Seat
9	01555459	1	Plate
10	05947900	2	Bolt-Hex .25-20 x .50 Grade 5
11	01556259	1	Panel-Weldment
12	01553659	1	Support-Seat Weldment
13	05948700	4	Bolt-Hex .38-16 x 1.00 Grade 5
14	06529600	4	Nut-Locking .375-16 Grade A
15	05521100	2	Bushing-Flange
16	07414400	2	Screw, Tapping .31-18 x .75
17	06308600	4	Washer-Lock .31 x .078
18	06437200	4	Washer-Flat-Steel .344 x .688 x .065
19	05946900	4	Bolt-Hex .31-18 x 1.00 Grade 5
20	78707800	1	Arm Rest Kit
	01552900	2	Arm Rest
	01553100	1	Bracket-Left Hand Armrest
	01553000	1	Bracket-Right Hand Armrest
	01553200	1	Hardware Pack, Armrest Kit

# FUEL TANK

Model 915013, 014, 017, 018, 307

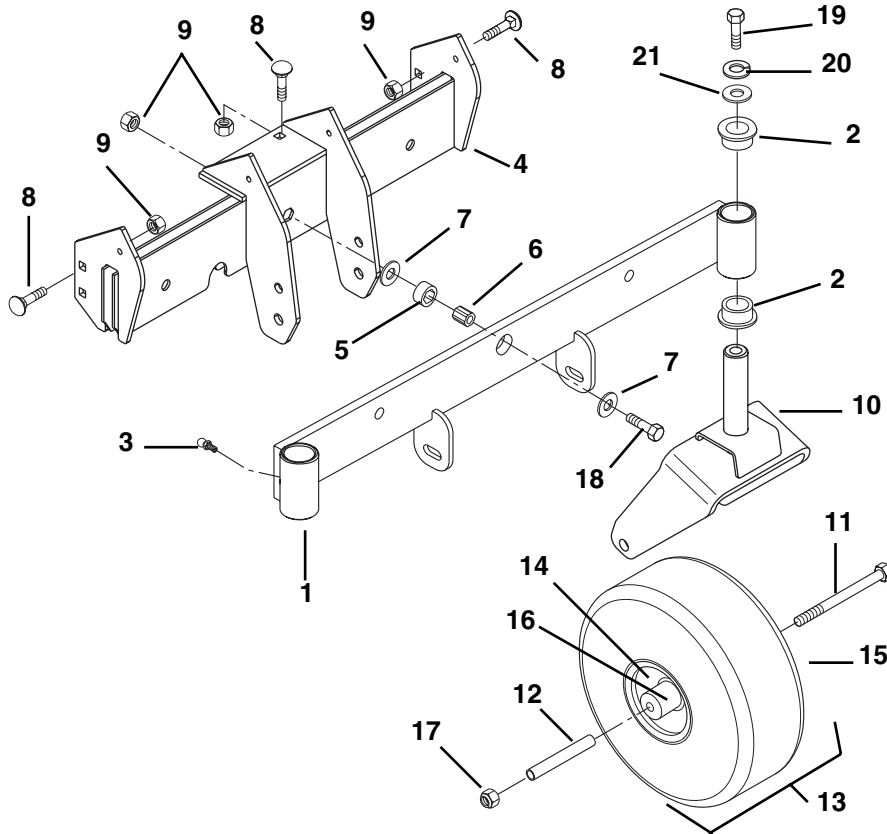


PE0430

Item	Part No.	Qty.	Description
1	06939100	2	Clamp-Hose-Wire .490/.510 x .116
2	01559700	1	Hose-Fuel .25 I.D. x 17.5" Long
3	01559600	1	Fitting-Tank
4	07511400	1	Bushing
5	09239500	1	Cap-Fuel
6	01551300	1	Fuel-Tank
7	01555000	1	Plug-Button
8	05947000	4	Bolt-Hex .312-18 x .75 Grade 5
9	06308600	4	Washer-Lock .31 x .078
10	06435700	4	Washer-Flat-Steel .38 x .875 x .083

# FRONT AXLE

Model 915013, 014, 017, 018, 307

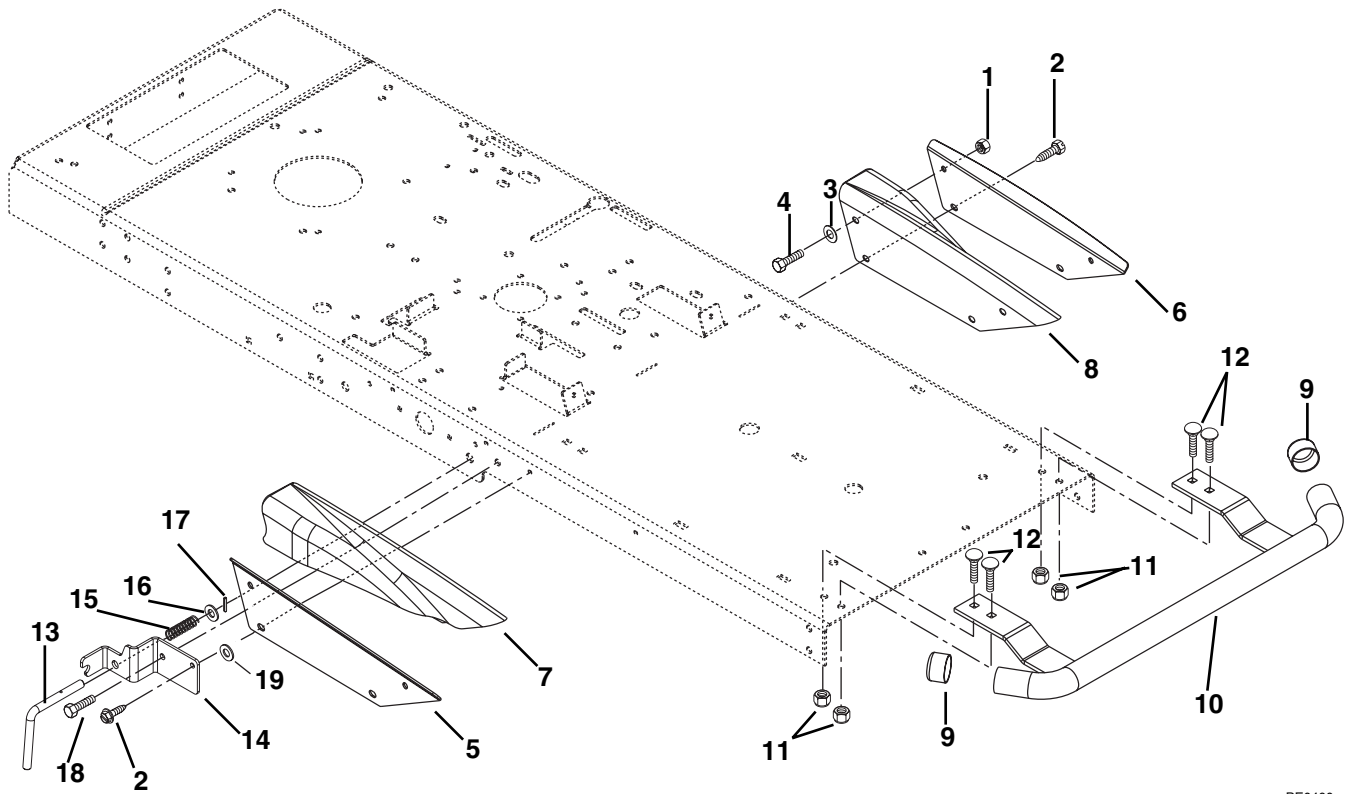


PE0023

Item	Part No.	Qty.	Description
1	01542959	1	Axle Weldment
2	05520100	4	Bushing-Flange 1.020 x 1.385 x .75 x 1.75
3	07012600	2	Fitting-Lube .25-28 x .256
4	01584959	1	Axle Frame Weldment
5	05522000	1	Bushing-Sleeve .626 x 1.000 x .524
6	05522700	1	Bushing-Sleeve .377 x .623 x .775
7	06443400	2	Washer-Flat-Steel .38 x 1.50 x .125
8	06223900	6	Bolt-Round Head Square Neck .38-16 x .75 Grade 5
9	06529600	7	Nut-Locking-Center .375-16
10	01547059	2	Fork-Caster
11	05964400	2	Bolt-Hex .50-13 x 6.50
12	09105200	2	Bushing-Caster Fork
13	07144100	2	Wheel & Tire 11 x 4.00-5 (Contains Items 16-18)
14	07145200	1	Rim Assembly
15	07145300	1	Tire
16	07145400	1	Bearing
17	06536300	2	Nut-Locking-Center .50-13 Grade 5
18	05957900	1	Bolt-Hex .38-16 x 1.75 Grade 5
19	05958000	2	Bolt-Hex .38-16 x 1.25 Grade 5
20	06308800	2	Washer-Lock .38 x .094
21	06441700	2	Washer-Flat-Steel .38 x 1.50 x .125

# BUMPERS

Model 915013, 014, 017, 018, 307

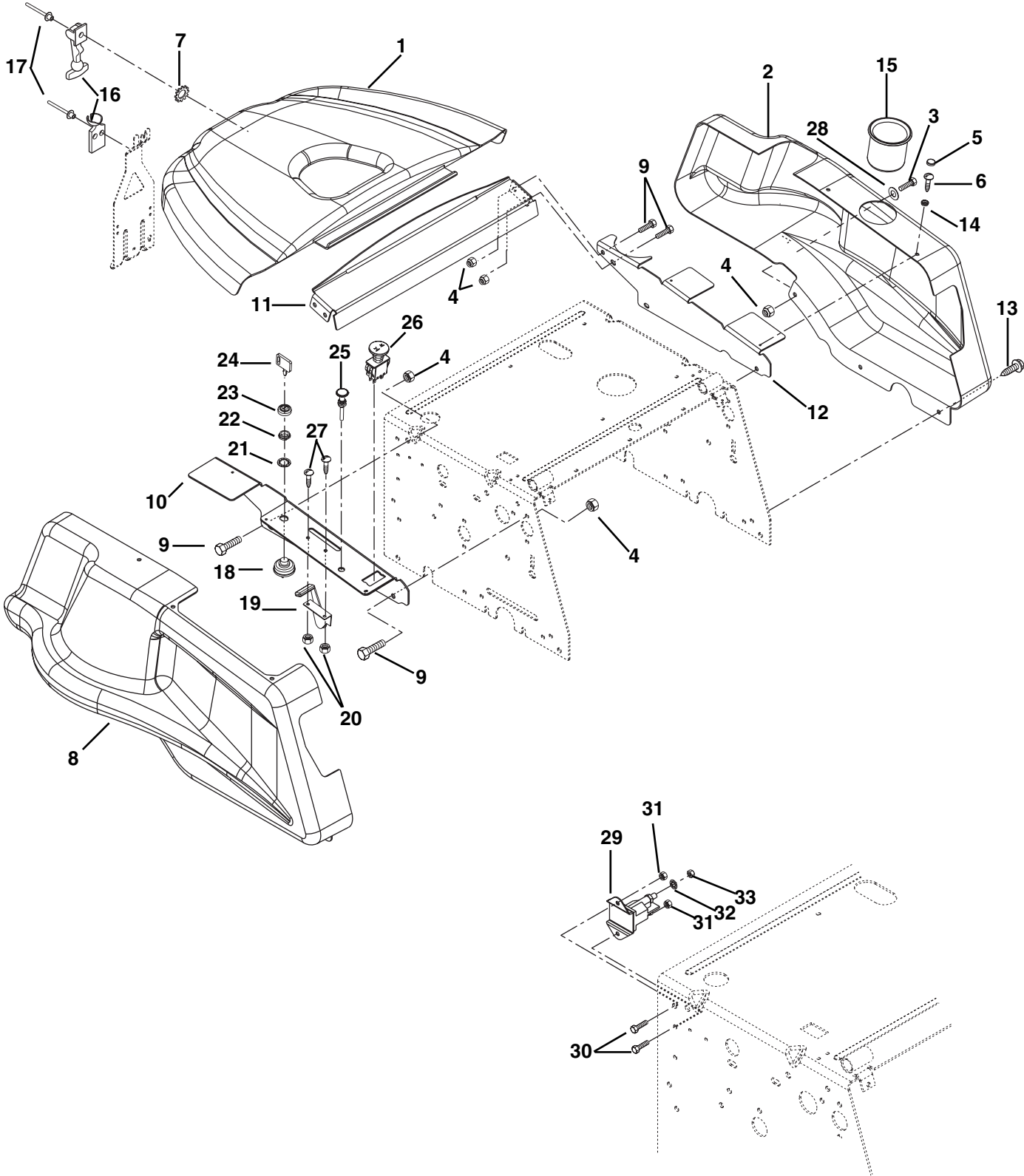


PE0460

Item	Part No.	Qty.	Description
1	06530200	4	Nut-Locking-Nylon .312-18 Grade 5
2	07414400	4	Screw-Tapping .312-18 x .75 Grade 5
3	06437200	4	Washer-Flat-Steel .344 x .688 x .065
4	05947000	4	Bolt-Hex .312-18 x .75 Grade 5
5	01555559	1	Bracket-Rail Support-Right Hand (014, 018, 307)
6	01554159	1	Bracket-Rail Support-Left Hand (014, 018, 307)
7	01552759	1	Rail-Side-Right Hand (014, 018, 307)
8	01551459	1	Rail-Side-Left Hand (014, 018, 307)
9	01555100	2	Cap-Sleeve (014, 018, 307)
10	01555751	1	Weldment-Bumper 014, 018, 307)
11	06535800	4	Nut-Locking-Nylon .375-16 Grade 5 (014, 018, 307)
12	06223600	4	Bolt-Round Head Square Neck .375-16 x 1.00 Grade 5 (014, 018, 307)
13	01558800	1	Pin-Index
14	01558751	1	Bracket-Stop
15	08325900	1	Spring-Compression
16	06441900	1	Washer-Flat-Steel .531 x 1.06 x .095
17	05802900	1	Pin-Roll .156 x 1.00
18	05948700	1	Bolt-Hex .38-16 x 1.00 Grade 5
19	06444000	2	Washer-Flat-Steel .406 x 1.00 x .188 (013, 017)

# COVER ASSEMBLY, SOLENOID AND SWITCHES

Model 915013, 014, 017, 018, 307



PE0441

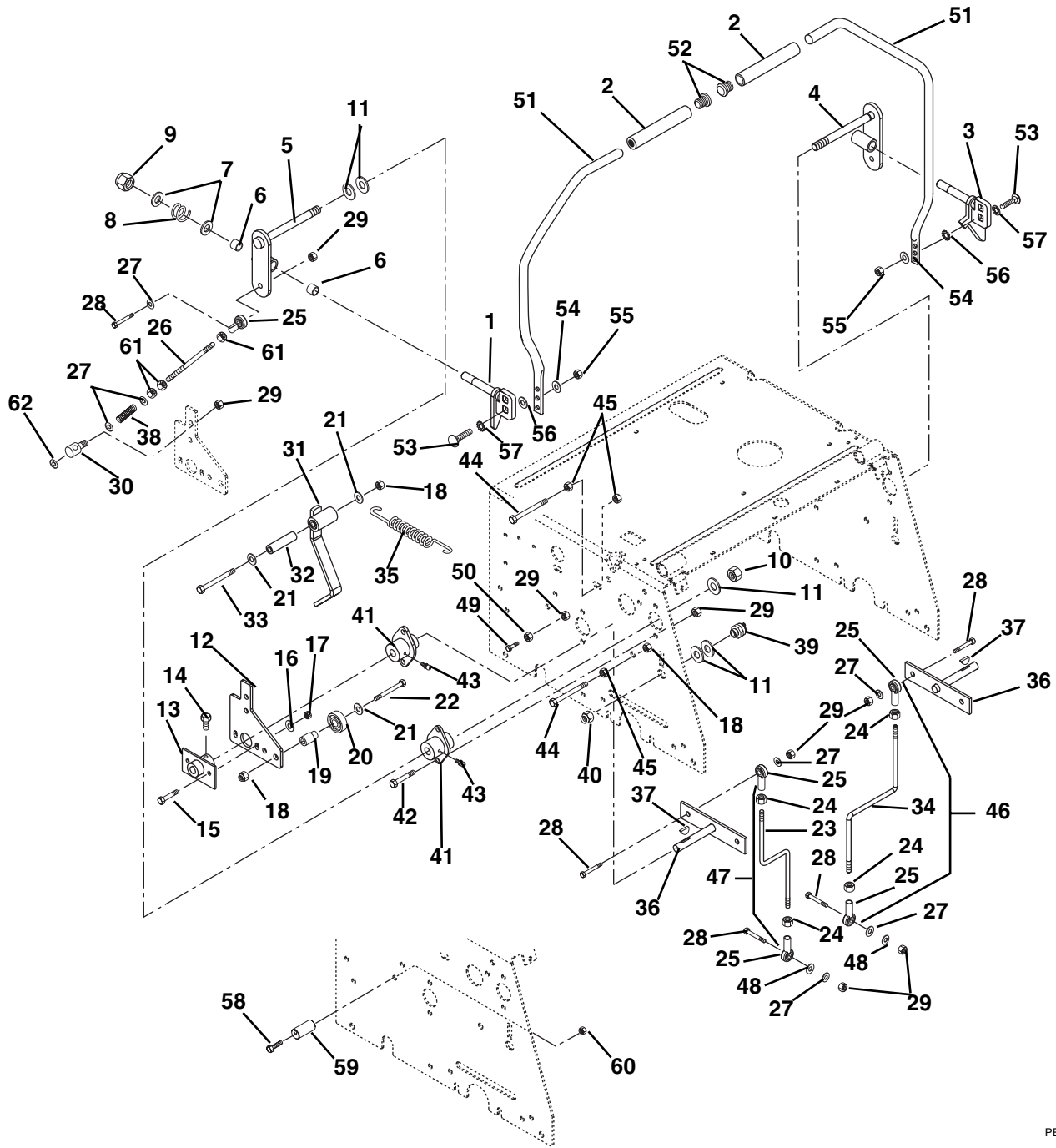
# COVER ASSEMBLY, SOLENOID AND SWITCHES

Model 915013, 014, 017, 018, 307

Item	Part No.	Qty.	Description
1	01549351	1	Shroud, Top (013, 014, 018, 307)
2	01553459	1	Shroud, Side Left Hand
3	05947000	2	Bolt-Hex .31-18 x .75 Grade 5
4	06530200	10	Nut-Locking-Nylon .312-18
5	01555200	5	Snap-Cap Top Cap
6	07415800	5	Screw-Tapping 10-24 x .50
7	07010500	3	Rivet-Burr .125 x .505 x .048 (013, 014, 018, 307)
8	01553359	1	Shroud-Side Right Hand
9	05947000	8	Bolt-Hex .312-18 x .75 Grade 5
10	01554051	1	Bracket-Control
11	01553851	1	Bracket-Hood (013, 014, 018, 307)
12	01553951	1	Bracket-Fuel Tank
13	07414400	4	Screw-Tapping .312-18 x .75 Hex Washer Head
14	01555300	5	Snap-Cap Washer
15	01528500	1	Cupholder
16	08704700	1	Latch, Flexible (013, 014, 018, 307)
17	06804400	3	Rivet-Pop .125 x .357 Dome (013, 014, 018, 307)
18	03602300	1	Key Switch
19	06942100	1	Cable-Throttle (014, 018)
	06942200	1	Cable-Throttle (013, 017, 307)
20	06536000	1	Nut-Locking-Nylon 10-24
21	06310900	1	Washer-Lock-Internal .563 x .040
22	06517400	1	Nut-Panel .562-24
23	07517700	1	Cap-Ignition Switch
24	02460700	1	Key with Cap
25	06942300	1	Cable-Choke (014, 018)
	00529900	1	Plug-Hole Plastic .44 (013, 017, 307)
26	01545600	1	Switch-Clutch
27	06116700	2	Screw-Machine 10-24 x .50
28	06437200	2	Washer-Flat-Steel .344 x .688 x .065
29	03679000	1	Solenoid
30	05947900	2	Bolt-Hex .25-20 x .50
31	06529700	2	Nut-Locking-Center .25-20 Grade 2
32	06310500	2	Washer-Lock-Internal .31
33	06536700	2	Nut-Jam .312-24

# CONTROLS

Model 915013, 014, 017, 018, 307



PE0292

Item	Part No.	Qty.	Description
1	01547200	1	Weldment-Lever Right Hand
2	09246800	2	Grip-Handlebar
3	01547300	1	Weldment-Lever Left Hand
4	01538900	1	Weldment-Rod Left Hand
5	01538800	1	Weldment-Tube Right Hand
6	00510500	4	Bushing-Nylon .5 x .625 x .5
7	00515700	4	Washer-Plastic .12 x .53 x 1.12



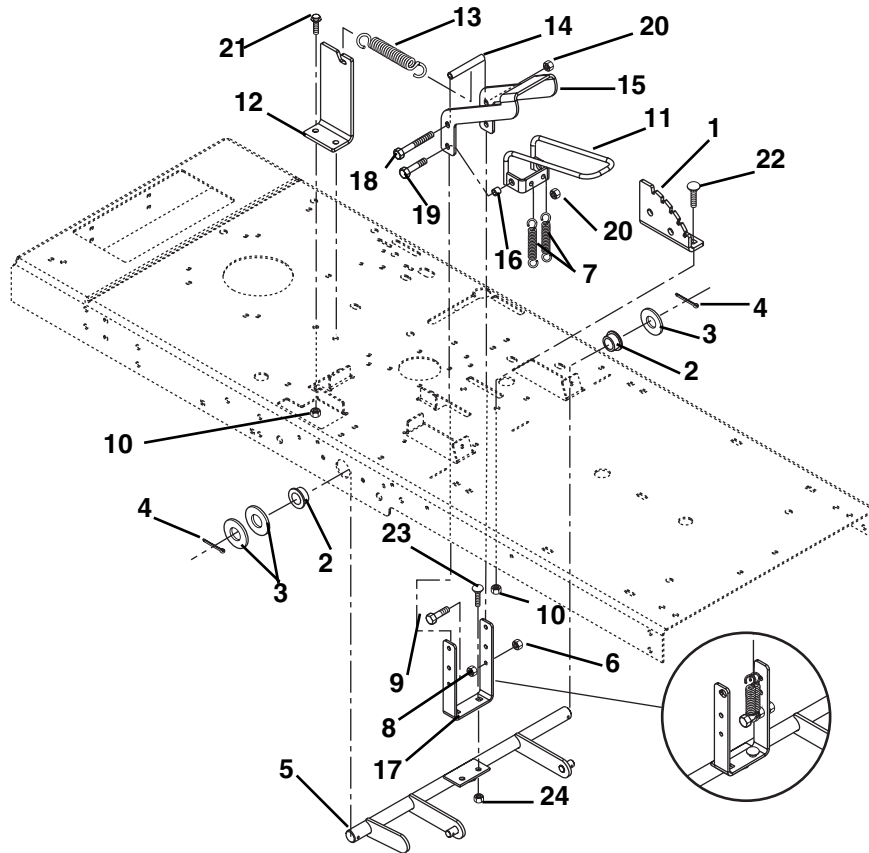
# CONTROLS

Model 915013, 014, 017, 018, 307

Item	Part No.	Qty.	Description
8	00516200	2	Spring-Compression
9	06528200	2	Nut-Locking Cone .50-13
10	06530000	2	Nut-Locking-Center .50-20
11	06442000	10	Washer-Flat, Steel .563 x 1.375 x .109
12	01539700	2	Arm-Speed Control
13	01525500	2	Arm-Speed Control
14	05947900	4	Bolt-Hex .25-20 x .50 Grade 5
15	05946800	4	Bolt-Hex .25-20 x .75 Grade 5
16	06437300	4	Washer-Flat Steel .281 x .620 x .065
17	06529700	4	Nut-Locking-Center .250-20
18	06529600	6	Nut-Locking-Center .375-16
19	09107200	2	Hub-Bearing Mount
20	05408000	2	Bearing-Ball .500 x 1.375 x .437
21	06436200	6	Washer-Flat, Steel .406 x .812 x .065
22	05963300	2	Bolt-Hex .38-16 x 2.00 Grade 5
23	01539900	1	Rod-Transaxle Right Hand
24	06536700	4	Nut-Jam .31-24
25	01542600	6	Rod-End-Female .312
26	01542500	2	Rod
27	06437200	8	Washer-Flat-Steel .344 x .688 x .065
28	05946900	4	Bolt-Hex .31-18 x 1.00 Grade 5
29	06529800	18	Nut-Locking-Center .312-18
30	01539000	2	Rod-Pivot
31	09107400	2	Weldment-Neutral Detent
32	08831500	2	Bushing-Sleeve .385 x .610 x 1.80
33	05961400	2	Bolt-Hex .38-16 x 2.75 Grade 5
34	01539800	1	Rod-Transaxle Left Hand
35	08320200	2	Spring, Tension .085 x .60 x 5.13
36	01541100	2	Weldment-Pump
37	06608600	2	Key-Woodruff .13 x .75
38	08333400	2	Spring
39	01526100	2	Switch-Neutral
40	07015100	2	Nut-Stamped .56-18
41	01522000	4	Bushing-Flanged
42	05947000	4	Bolt-Hex .31-18 x .75 Grade 5
43	07012600	4	Fitting-Lube .25-28 x .256
44	05957800	4	Bolt-Hex .38-16 x 3.00
45	06529400	6	Nut-Hex .375-16 Grade 2
46	01542800	AR	Rod Assembly-Transaxle Right Hand (Contains Item 23 & two each of Items 24 & 25)
47	01542700	AR	Rod Assembly-Transaxle Left Hand (Contains Item 34 & two each of Items 24 & 25)
48	06446900	2	Washer-Flat-Steel .347 x 1.254 x .048
49	05957400	2	Bolt-Hex .31-18 x .75
50	06529200	2	Nut-Hex .31-18
51	00568700	2	Handlebar-Large Frame
52	09211400	2	Cap Plug-Handlebar
53	06216100	4	Bolt-Round Head Square Neck .31-18 x 1.00 Grade 5
54	06435700	4	Washer-Flat-Steel .38 x .875 x .083
55	06530400	4	Nut-Locking-Flange .31-18
56	06307200	2	Washer-Locking-External .326 x .599 x .031
57	06304000	2	Washer-Locking-Internal .438
58	05960600	2	Bolt-Hex .31-18 x 2.75 Grade 5
59	01556900	2	Eccentric
60	06530200	2	Nut-Locking-Nylon .31-18
61	06529500	3	Nut-Hex .31-24
62	06439100	1	Washer-Flat-Steel .38 x 87 x .179

# ATTACHMENT LIFT

Model 915013, 014, 017, 018, 307

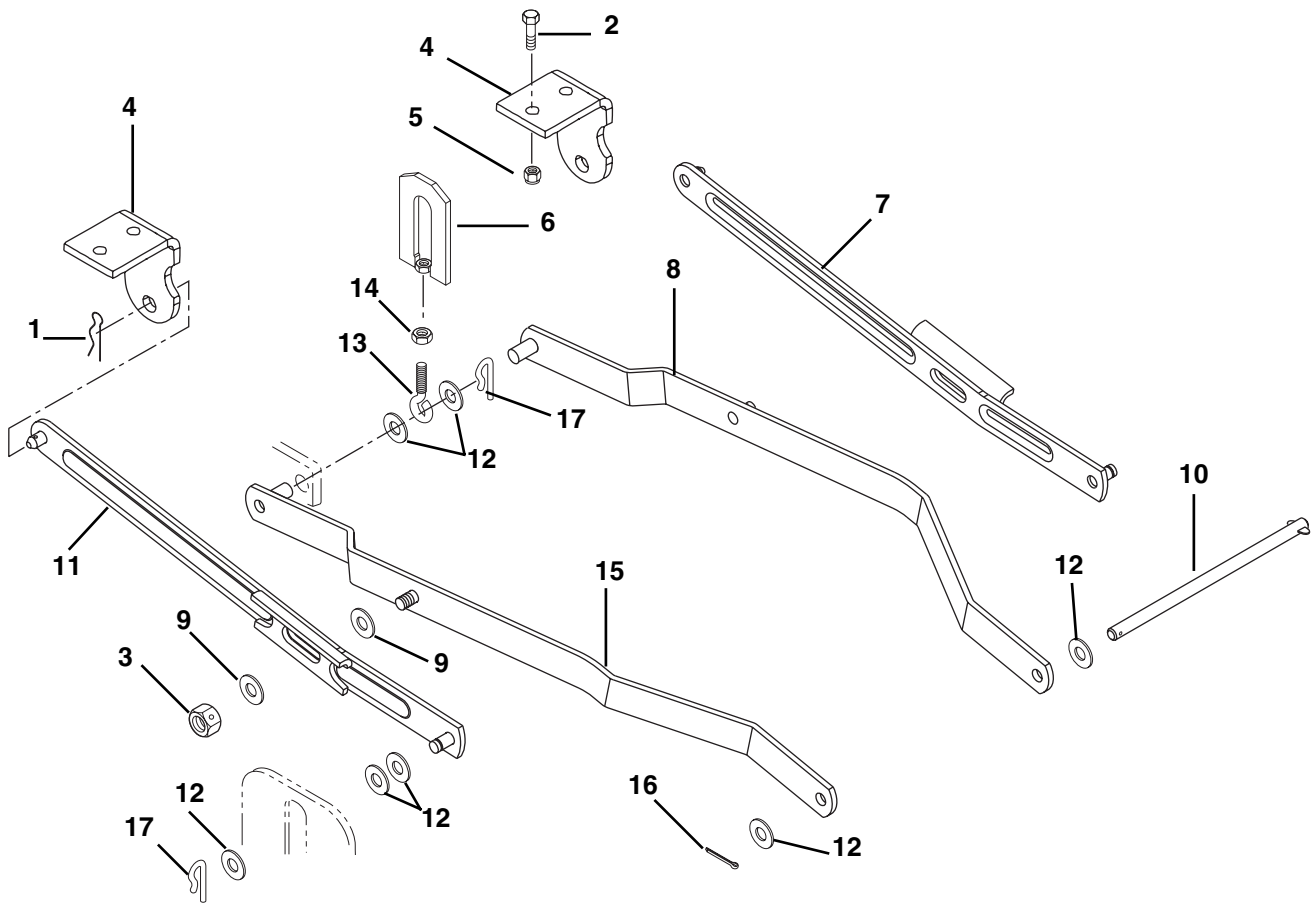


PE0451

Item	Part No.	Qty.	Description
1	01556500	1	Detent Plate
2	05520100	2	Bushing-Flange 1.020 x 1.385 x .75 x 1.75
3	06443000	3	Washer-Flat-Steel 1.062 x 2.000 x .134
4	06712800	2	Pin-Cotter .188 x 1.50
5	01558651	1	Lift Lever Weldment (014)
	01556151	1	Lift Lever Weldment (013, 017, 018, 307)
6	06529700	1	Nut-Locking-Center .25-20
7	08309900	2	Spring-Tension .092 x .69 x 1.75
8	06533200	1	Nut-Hex .25-20
9	05967100	1	Bolt-Hex .25-20 x 2.00 Grade 5
10	06529600	4	Nut-Locking-Center .38-16
11	01554700	1	Weldment-Release
12	01554251	1	Bracket-Lift
13	08313300	1	Spring-Tension
14	01554500	1	Spacer .328 x .462 x 3.14
15	01556451	1	Handle-Deck Lift
16	01554600	2	Spacer .328 x .462 x .41
17	01556351	1	Bracket-Handle
18	05973900	1	Bolt-Hex .312-18 x 4.50 Grade 5
19	05947500	2	Bolt-Hex .312-18 x 1.25 Grade 5
20	06530200	3	Nut-Locking-Nylon .312-18
21	05948700	2	Bolt-Hex .38-16 x 1.00 Grade 5
22	06223900	2	Bolt-Round Head Square Neck .375-16 x .75 Grade 5
23	06223600	2	Bolt-Round Head Square Neck .375-16 x 1.00 Grade 5
24	06542000	2	Nut-Locking-Top Flange .38-16

# HANGER ARM (48" DECKS ONLY)

Model 915014



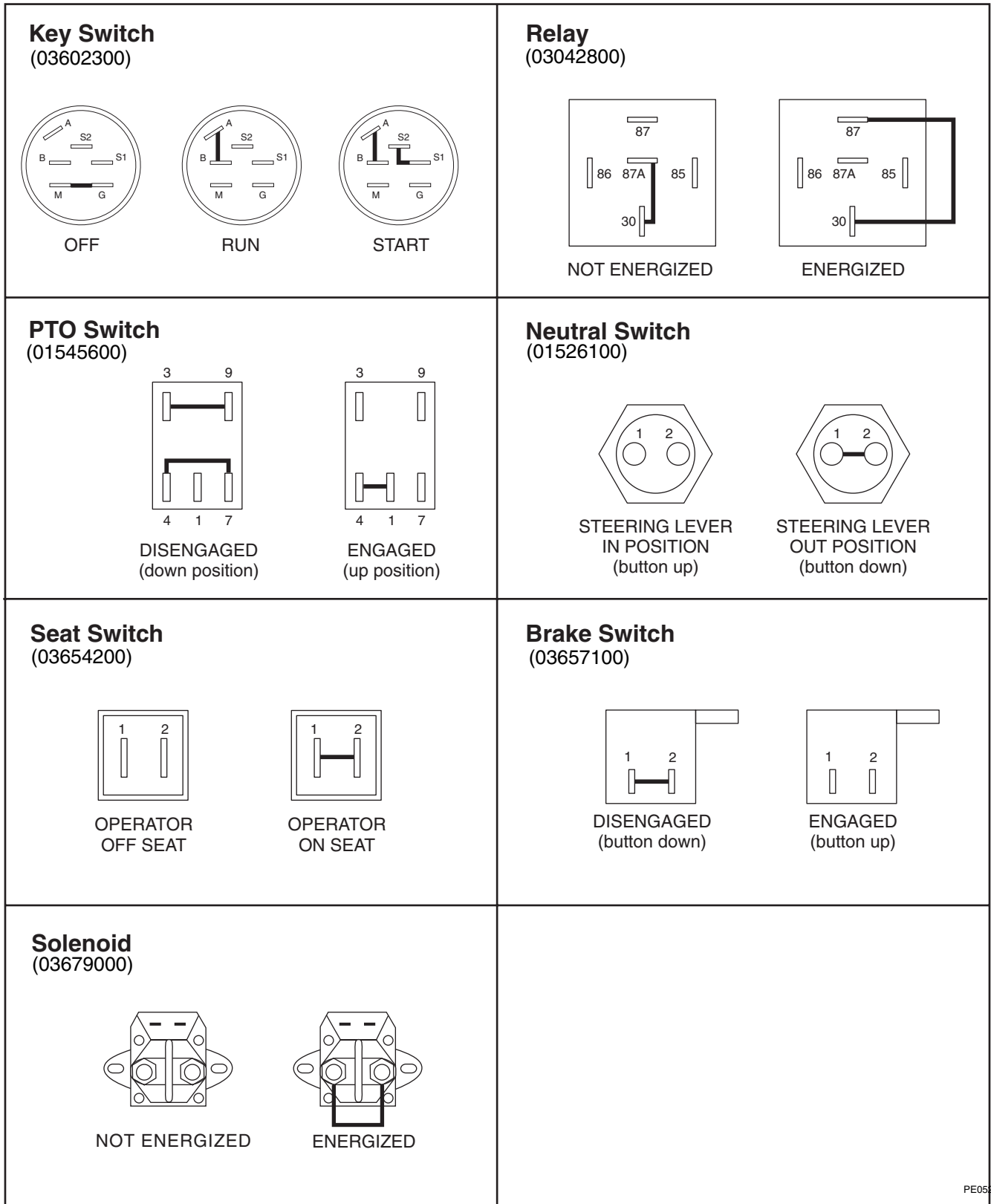
PE0111

Item	Part No.	Qty.	Description
1	06711900	2	Pin-Hair External .12 x .31 x 2.37
2	05959400	4	Bolt-Hex .38-16 x .75 Grade 5
3	06535300	2	Nut-Locking-Center .625-11
4	01519500	2	Rear Hanger
5	06529600	4	Nut-Locking-Center .375-16
6	01563300	2	Weldment, Adjustment Link
7	01587451	1	Hanger, Rear Left Hand
8	01587251	1	Arm, Lift Left Hand
9	06442800	4	Washer-Flat-Steel .656 x .31 x .095
10	01535900	1	Pin
11	01587551	1	Hanger, Rear Right Hand
12	06430200	12	Washer-Flat-Steel .531 x 1.25 x .10
13	07030000	2	Hanger
14	06535900	2	Nut-Jam .375-16
15	01587351	1	Arm, Lift Right Hand
16	06712300	1	Pin-Cotter .16 x 1.00
17	06944800	4	Clip, Spring

# CONTINUITY DIAGRAM

**Model 915013, 014, 017, 018, 307**

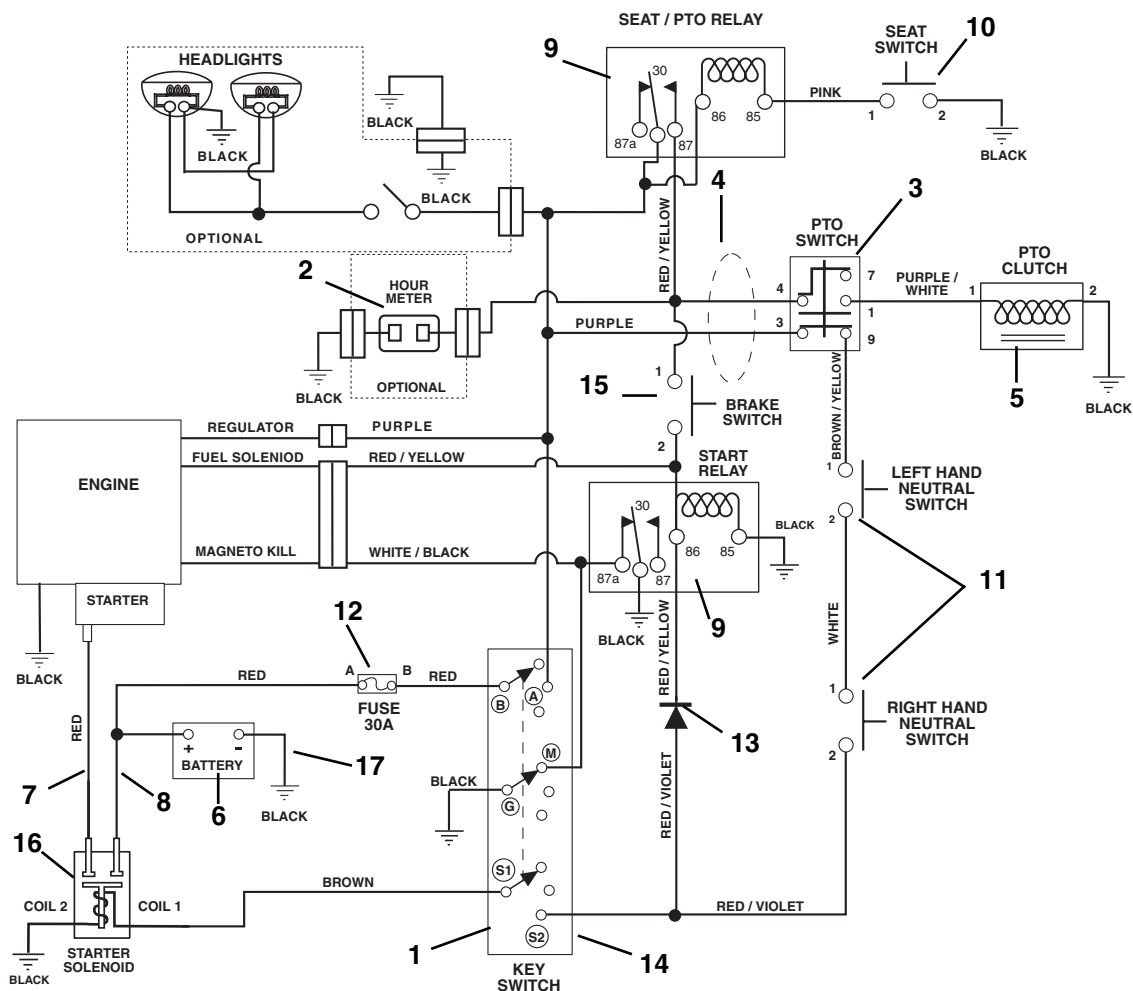
The diagrams below show the various states of connection for electrical components.  
 The solid lines on switches show continuity.  
 NOTE: All switches are viewed from the rear.



PE0521

# WIRING DIAGRAM

Model 915013, 014, 017, 018, 307

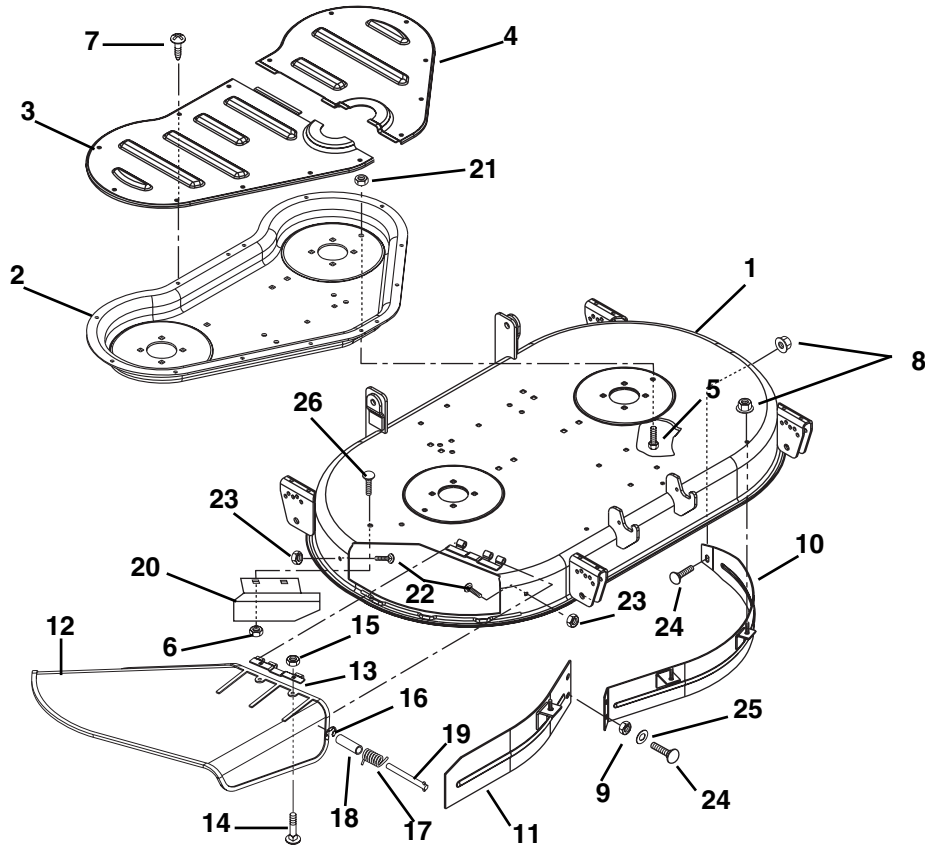


PE0531

Item	Part No.	Qty.	Description
1	03602300	1	Key Switch
2	03492700	1	Hour Meter (Optional)
3	01545600	1	Switch-Clutch
4	01563200	1	Harness-Wiring
5	03357900	1	Clutch / Brake-Electric (014)
	03643100	1	Clutch / Brake-Electric (013, 017, 018, 307)
6	01554800	1	Battery with Tube (013, 014)
	03621100	1	Battery with Tube (306, 307)
7	02743300	1	Start Cable
8	02727900	1	Starter Cable
9	03042800	2	Relay
10	03654200	1	Switch-Seat
11	01526100	2	Switch-Neutral
12	05246000	1	30 AMP Fuse
13	03081700	1	Plug-Molded Diode
14	07517700	1	Cap-Ignition Switch
15	03657100	1	Switch-Brake
16	03679000	1	Solenoid
17	03111100	1	Ground Cable

# 42" MOWER DECK

Model 915013, 017, 018, 307

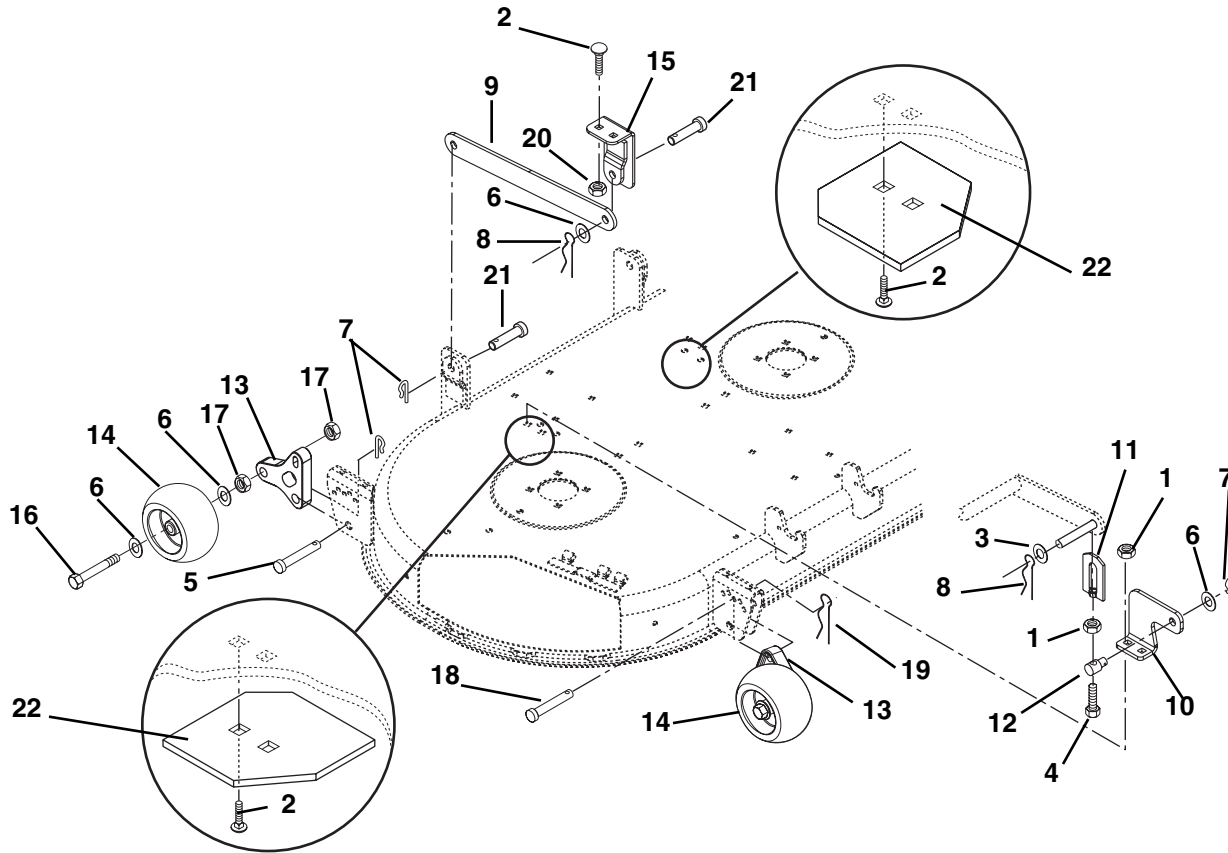


PE0542

Item	Part No.	Qty.	Description
1	51503800	1	Mower-42" Ariens EZR with Decals
	51504000	1	Mower-42" Ariens EZR Assembly Complete
2	01584251	1	Reinforcement-Deck
3	01585300	1	Cover-Deck Reinforcement
4	01585200	1	Cover-Deck Reinforcement
5	05948700	2	Bolt-Hex .38-16 x 1.00
6	06529600	2	Nut-Locking-Center .38-16
7	07411500	14	Screw-Tapping Hex Washer Head Thread Rolling .31-18 x .50
8	06543100	4	Nut-Locking-Top-Flange .31-18
9	06529800	3	Nut-Lock-Center .31-18
10	01584351	1	Weldment-Baffle Upper Left Hand
11	01584451	1	Weldment-Baffle Upper Right Hand
12	01585500	1	Deflector-Chute 42"
13	02709551	1	Hinge-Plate
14	06219900	2	Bolt-Round Head Square Neck .25-20 x .75
15	06530100	2	Nut-Locking-Flange .250-20
16	05706300	1	Ring-Retainig-External .312 x .025
17	08307200	1	Spring-Torsion .095 x .50 x 1.00
18	02202900	1	Bushing
19	03624200	1	Pin
20	01582651	1	Deflector-Baffle
21	06535800	2	Nut-Locking-Nylon .38-16
22	05947000	2	Bolt-Hex .31-18 x .75
23	06529800	2	Nut-Locking-Center .31-18
24	06215700	3	Bolt-Round Head Square Neck .31-18 x .75
25	06435700	2	Washer-Flat-Steel .038 x .875 x .083
26	05959400	2	Bolt-Hex .38-16 x .75

# 42" MOWER BRACKETS AND ROLLERS

Model 915013, 017, 018, 307

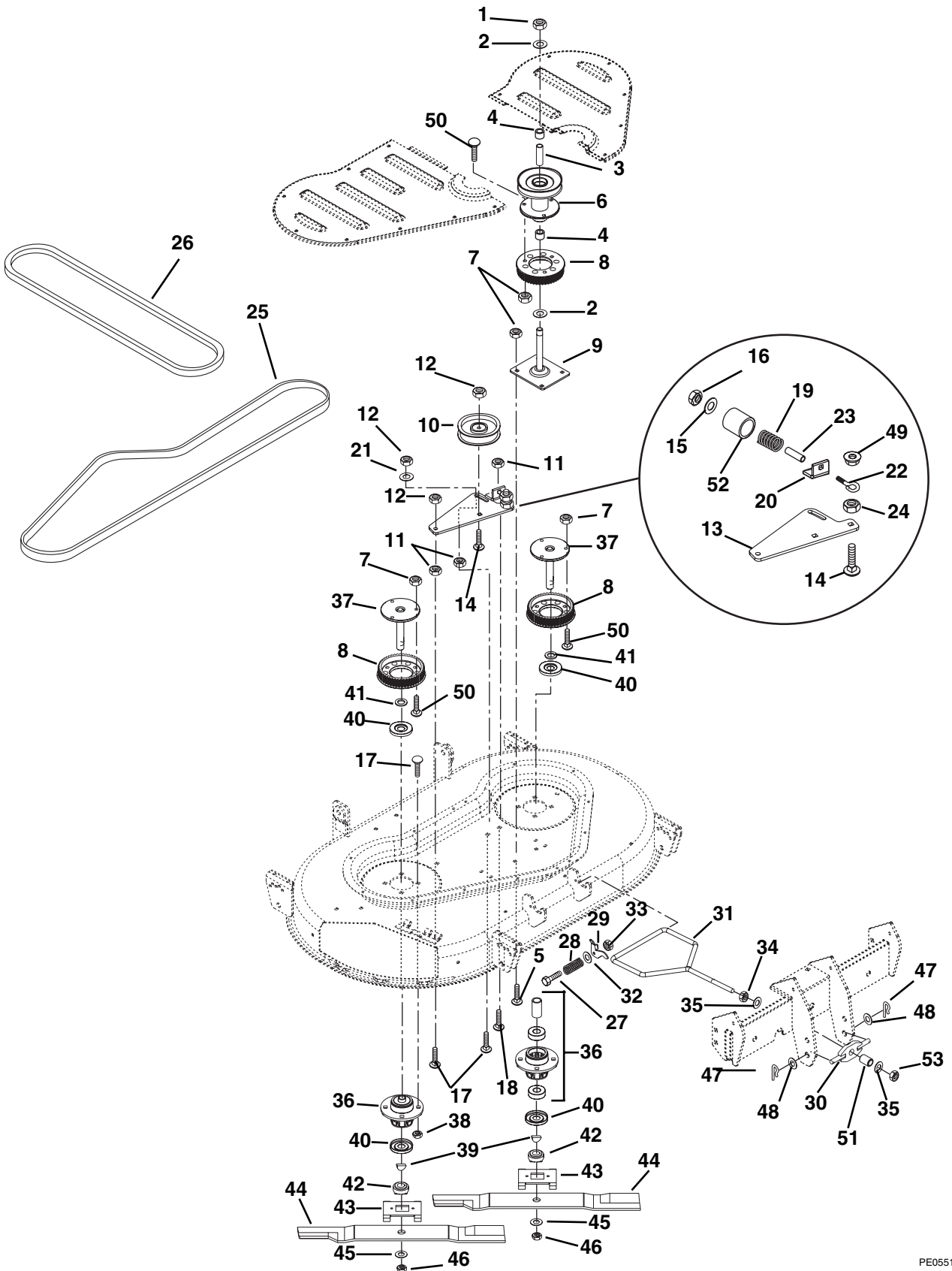


PE0621

Item	Part No.	Qty.	Description
1	06529600	4	Nut-Locking-Center .38-16
2	06223900	8	Bolt Round Head Square Neck .38-16
3	06442000	3	Washer-Flat-Steel .563 x 1.38 x .109
4	05943100	2	Bolt-Hex .38-16 x 2.50 Grade 5
5	06816300	4	Pin-Clevis .50 x 1.38
6	06436600	12	Washer-Flat-Steel .505 x .88 x .072
7	06944800	8	Clip-Spring
8	06711900	4	Pin-Hair-External .12 x .31 x 2.37
9	01583451	2	Link-Lift
10	01583651	2	Bracket-Lift
11	01563300	2	Link-Adjustment
12	01582300	2	Trunnion
13	01585100	4	Bracket-Roller Bracket Adjustment
14	03471700	4	Wheel 5" x 3"
15	01583951	2	Weldment-Deck Stop Bracket
16	05961900	4	Bolt-Hex .50-13 x 4.00
17	06519700	8	Nut-Locking-Center-Jam .50-13
18	06816200	4	Pin-Clevis .31 x 1.38
19	06713500	4	Pin-Hair Internal .08 x .18 x 1.18
20	06535800	4	Nut-Locking-Nylon .38-16
21	06816400	4	Pin-Clevis .50 x 1.00
22	01586700	2	Reinforcement, Deck Lift

# 42" MOWER SPINDLE

Model 915013, 017, 018, 307



PE0551



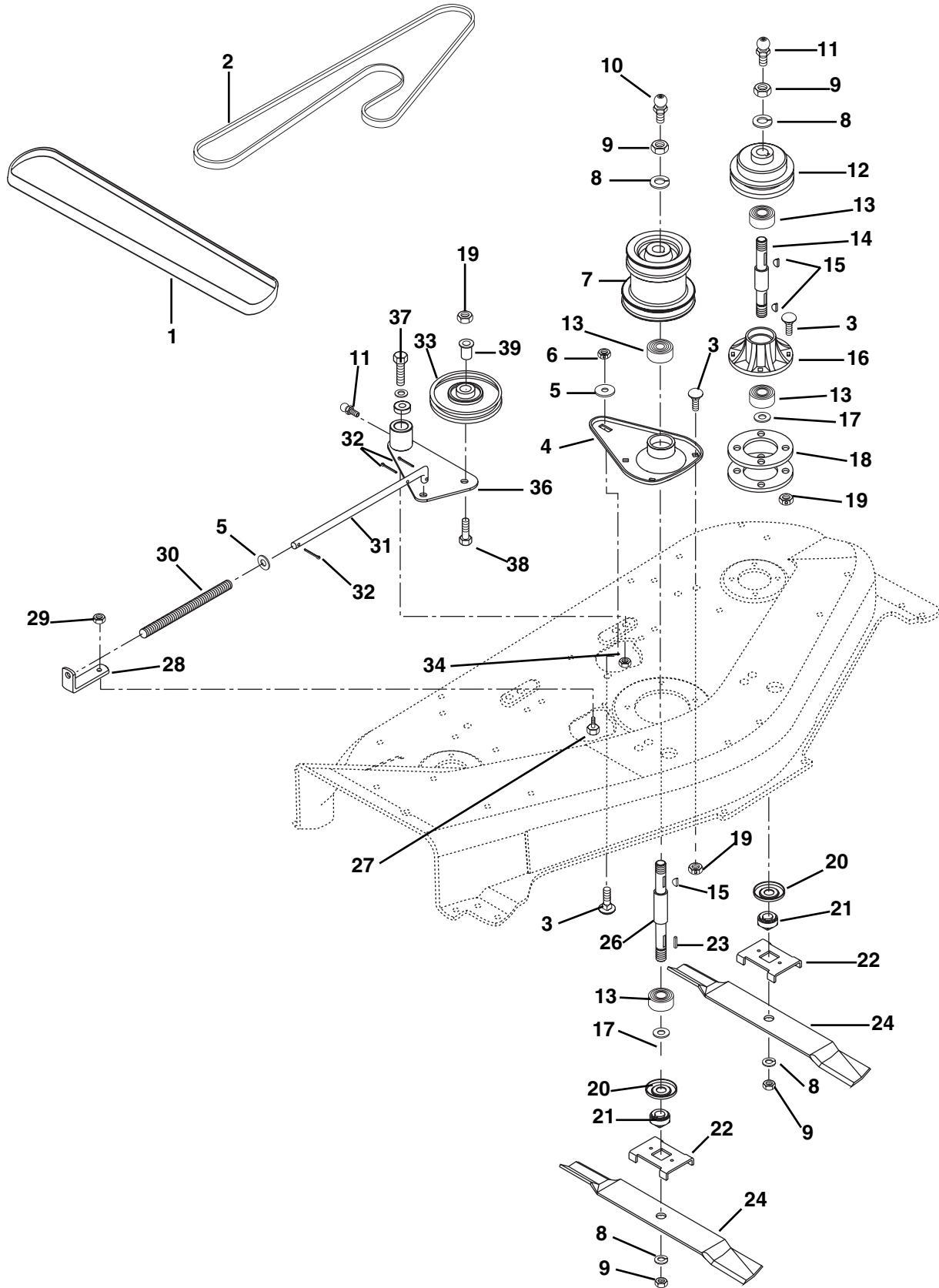
# 42" MOWER SPINDLE

Model 915013, 017, 018, 307

Item	Part No.	Qty.	Description
1	06530300	1	Nut-Locking-Nylon .625-18
2	06436100	2	Washer-Flat-Steel .630 x 1.00 x .062
3	01583100	1	Spacer .64 x .88 x 4.07
4	05435100	2	Bearing .625 x 1.37 x .43
5	06215700	4	Bolt-Round Head Square Neck .31-18 x .75
6	01587700	1	Jackshaft
7	06529800	13	Nut-Locking-Center.31-18
8	01583700	3	Sprocket-Drive
9	01582951	1	Weldment-Plate Mount
10	07320800	1	Assembly-Idler Pulley
11	06537200	3	Nut-Locking-Jam-Center .38-16
12	06542000	3	Nut-Locking-Top-Flange .38-16
13	01583200	1	Arm-Idler
14	06223800	2	Bolt Round Head Square Neck .38-16 x 1.75 Grade5
15	06435900	1	Washer-Flat-Steel .438 x 1.00 x .083
16	06529600	1	Nut, Locking-Center .38-16
17	06224100	10	Bolt-Round-Head Square Neck .38-16 x 1.25 Grade 5
18	06223900	1	Bolt-Round-Head Square Neck .38-16 x .75 Grade 5
19	08335700	1	Spring-Compression .125 x .78 x 1.25
20	01583300	1	Bracket-Belt Adjustment
21	06435900	1	Washer-Flat-Steel .438 x 1.00 x .083
22	07030000	1	Bolt-Eye .375-16 x 2.50
23	01583000	1	Spacer .39 x .50 x .86
24	06535800	1	Nut-Locking-Nylon .38-16
25	07237500	1	Belt-Cog
26	07237400	1	Belt-V A-RMA
27	05947400	2	Bolt-Hex .25-20 x 1.25 Grade 5
28	08321700	2	Spring-Compression .058 x .68 x .75
29	01583500	2	Retainer-Brace
30	01586800	1	Weldment-Front Mount
31	01584600	1	Rod Link
32	06435800	2	Washer-Flat-Steel .312 x .734 x .065
33	06531000	2	Nut-Locking-Nylon .25-20
34	06536300	1	Nut-Locking-Center .50-13
35	06442000	2	Washer-Flat-Steel .563 x 1.38 x .109
36	01583800	2	Assembly-Spindle Housing
37	01582400	2	Weldment-Spindle Shaft
38	06542000	8	Nut-Locking-Top-Flange .38-16
39	06604200	2	Key Woodruff .188 x .625 x .31
40	00341900	4	Bearing-Slinger
41	06444200	2	Washer-Flat-Steel .755 x 1.25 x .125
42	01582100	2	Hub-Retainer
43	01582200	2	Tray-Blade
44	01586200	2	Blade, Mulch 22" (013, 017, 018)
	01585000	2	Blade-22" Low Lift-CE (307)
45	06310300	2	Washer-Locking .75 x .188
46	06537700	2	Nut-Jam .75-10
47	06944800	2	Clip-Spring
48	06441900	2	Washer-Flat-Steel .531 x 1.06 x .095
49	06534800	1	Nut-Locking-Flange Grade.A .375-16
50	06216100	9	Bolt-Round-Head Square Neck .31-18 x 1.00 Grade 5
51	05533100	1	Bushing-Sleeve .50 x .74 x .53
52	01582000	1	Spacer .803 x 1.09 x .877
53	06540600	1	Nut-Locking-Nylon .50-13

# 48" MOWER SPINDLE

Model 915014



PE0501

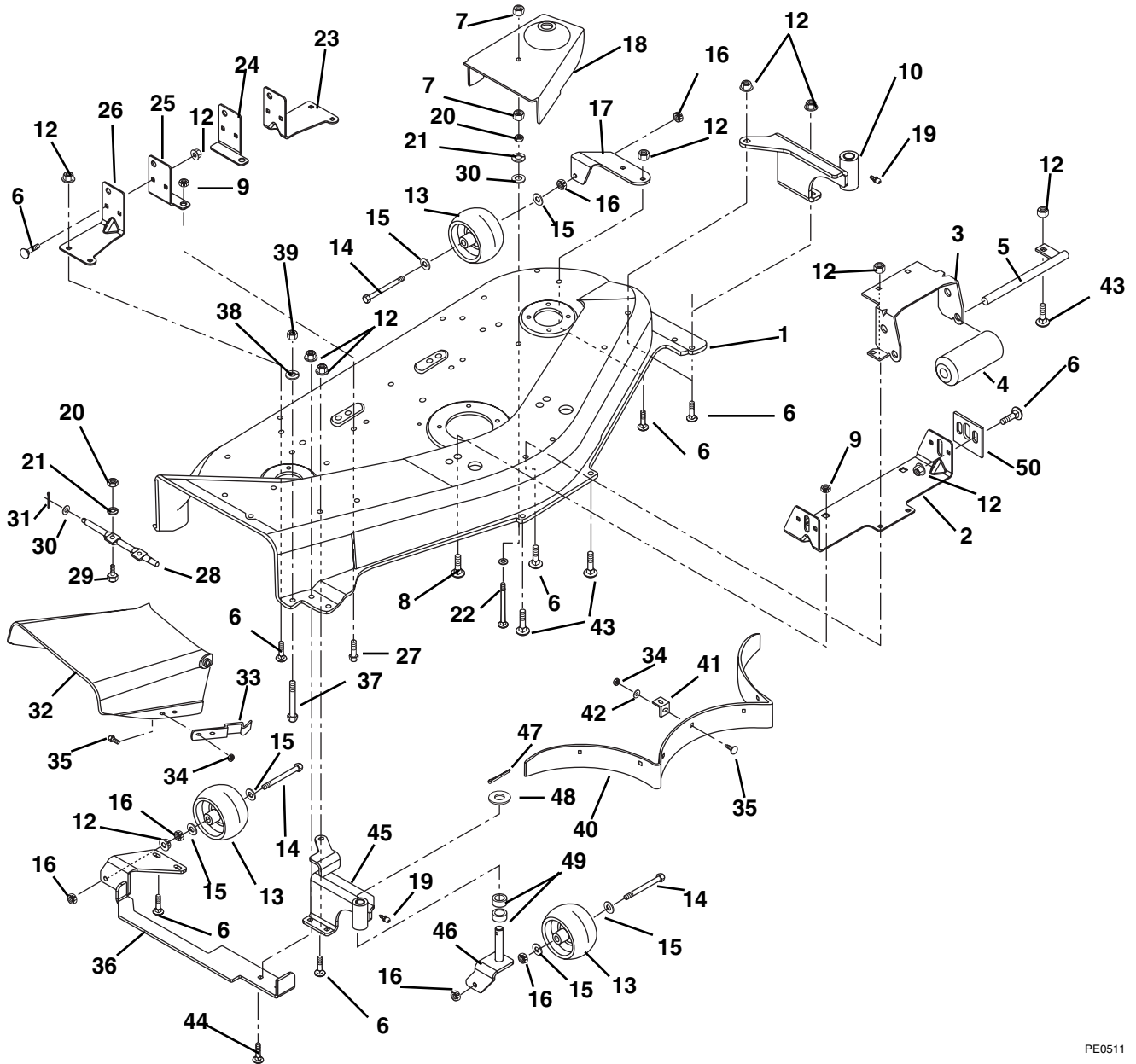
# 48" MOWER SPINDLE

Model 915014

Item	Part No.	Qty.	Description
1	07234500	1	Belt, 48" Clutch to Deck
2	07234400	1	Belt, 48" Deck
3	06223900	13	Bolt-Round Head Square Neck .38-16 x .75 Grade 5
4	03434951	1	Housing, Spindle
5	06436200	2	Washer-Flat-Steel .406 x .812 x .065
6	06529600	1	Nut-Locking-Center .375-16
7	01543300	1	Sheave, 48" Deck
8	06310300	6	Washer-Lock .750 x .188
9	06537700	6	Nut-Jam .75-10
10	07012500	1	Fitting, Lube .125
11	07012600	3	Fitting, Lube .25-28 x .256
12	03401800	2	Sheave
13	05412000	6	Bearing-Ball .750 x 1.781 x .61
14	53115100	2	Spindle Shaft w/Zerk
15	06601400	5	Key-Woodruff .188 x .62 x .25
16	03433500	2	Spindle Housing
17	06444100	3	Washer-Flat-Steel .754 x 1.000 x .032
18	03433600	4	Spacer, Spindle
19	06542000	13	Nut-Locking-Top-Flange .38-16
20	00341900	3	Bearing Slinger
21	03037500	3	Retainer Hub
22	03485500	3	Blade Tray 48
23	06601700	1	Key-Square .188 x .625 x .188
24	03123700	3	Blade
25	06444200	1	Washer-Flat-Steel .755 x 1.250 x .125
26	53402400	1	Spindle Shaft with Zerk & Key
27	05947200	1	Bolt-Hex .31-18 x .50 Grade 5
28	03418851	1	Bracket
29	06529800	1	Nut-Locking-Center .312-18
30	08301800	1	Spring-Compression .106 x .63 x 12.0
31	03433900	1	Rod-Idler Spring
32	06706900	3	Pin-Cotter .09 x .75
33	00542700	1	Idler-Plastic 4.75 OD x .50 ID
34	06536300	1	Nut-Locking-Center .50-13
35	06436600	1	Washer-Flat-Steel .505 x .880 x .072
36	03433751	1	Idler Arm w/Zerk
37	05966600	1	Bolt-Hex .50-13 x 2.50 Grade 5
38	07006300	1	Bolt-Button Head .38-16 x 1.25 Grade 5
39	03114500	1	Spacer-Flanged .390 x .500 x .781 x .875
40	03433800	1	Spacer, Pivot

# 48" MOWER PAN

Model 915014



PE0511

Item	Part No.	Qty.	Description
1	53401700	1	Mower Pan Head w/Decals 48" (014)
2	01521251	1	Front Hanger
3	03435151	1	Bracket, Roller
4	03114100	1	Roller
5	03435200	1	Roller Shaft
6	06215700	23	Bolt-Round Head Square Neck .31-18 x .75 Grade 5
7	06529800	6	Nut-Locking-Center .312-18
8	06224600	2	Bolt-Round Head Square Neck .50-13 x .75 - Short Neck
9	06536300	3	Nut-Locking-Center .50-13 Grade 5

# 48" MOWER PAN

Model 915014

Item	Part No.	Qty.	Description
10	01535659	1	Weldment-Left Front
11	06214100	19	Bolt-Round Head Square Neck .31-18 x .75
12	06543100	27	Nut-Locking-Top-Flange .31-18
13	02745400	4	Roller
14	05960900	4	Bolt-Hex .38-16 x 3.50 Grade 5
15	06435700	8	Washer-Flat-Steel .38 x .875 x .083
16	06529600	6	Nut-Locking-Center .375-16
17	01535359	1	Bracket-Left Rear
18	03095859	1	Belt Cover Right Hand 48"
	03095959	1	Belt Cover Left Hand 48"
19	07012600	2	Fitting-Lube .25-20 x .256
20	06529200	4	Nut-Locking .312-18
21	06308600	4	Washer-Locking .31 x .078
22	06223500	2	Bolt-Round Head Square Neck .31-18 x 3.25
23	01535851	1	Left Hand Rear Hanger
24	01521651	1	Left Hand Rear Hanger Support
25	01521451	1	Right Hand Rear Hanger Support
26	01535751	1	Right Hand Rear Hanger
27	05947100	1	Bolt-Hex .50-13 x 1.00 Grade 5
28	03405800	1	Hinge Pin
29	05947000	2	Bolt-Hex .31-18 x .75 Grade 5
30	06436200	3	Washer-Flat-Steel .406 x .812 x .065
31	06706900	1	Pin-Cotter .09 x .75
32	03034959	1	Chute Extension
33	00318559	1	Flat Spring
34	06529700	16	Nut-Locking-Center .25-20
35	06220600	16	Bolt-Round Head Square Neck .25-20 x .50 Grade 5
36	01535459	1	Weldment-Right Rear
37	06224400	1	Bolt-Round Head Square Neck .38-16 x 2.50 Grade 5
38	06306500	1	Washer-Lock .375 x .155
39	06529400	1	Nut-Hex .375-16
40	03434251	1	Baffle
41	03434351	7	Baffle Tab
42	06437300	7	Washer-Flat-Steel .281 x .620 x .065
43	06212100	3	Bolt-Round Head Square Neck .31-18 x 1.50 Grade 5
44	06216100	2	Bolt-Round Head Square Neck .31-18 x 1.00 Grade 5
45	01535559	1	Weldment-Right Front
46	01534659	2	Caster Fork Weldment
47	06712700	2	Pin-Cotter .18 x 1.25
48	06436100	2	Washer-Flat-Steel .630 x 1.005 x .062
49	05504700	4	Bushing-Sleeve .625 x .750 x .500
50	01528751	2	Mower Adjustment Tab



**Ariens Company**  
655 West Ryan Street  
P.O. Box 157  
Brillion, WI 54110-0157  
920-756-2141  
Fax 920-756-2407  
[www.ariens.com](http://www.ariens.com)