



## **AWAC24UR User Manual**

### **DSAWAC24UR -DSSS USB Radio Dongle**



## Wireless USB Radio Dongle Installation

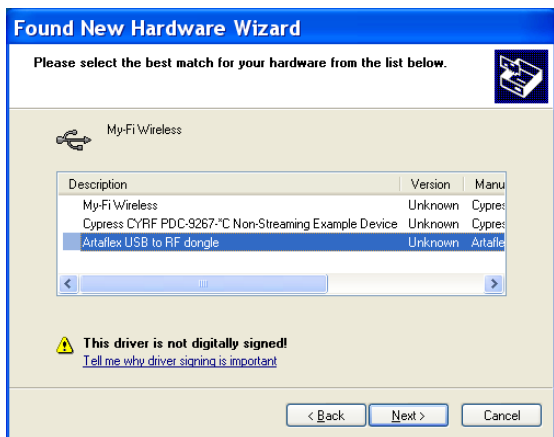
1. Plug in the Artaflex USB dongle to any USB port, you will see the following message .



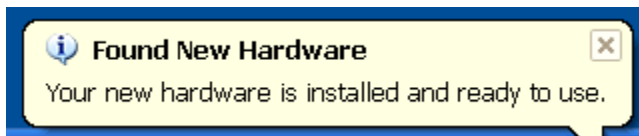
2. Once asked for the drivers please select “Install from a specific location” then Browse and select the USB driver.



3. When asked for device selection please select “Artaflex USB to RF dongle” from the list



4. Once it is successfully installed, you will find the following message.





## FCC Statement

One of the bottlenecks that many product developers encounter in incorporating any radio communication device is facing the legal aspect of qualifying the products and going to market without encountering legal problems. The Telecommunication Certification Body (TCB) authorization process in the United States offers manufacturers more than one approval body. The TCB authorization process certifies devices in accordance with FCC rules and policies. The performance of the Artaflex AWAC24UR radio is measured according to the requirements of FCC rules. The major applicable FCC regulations are described in Section 15.247 (a) to (d).

This equipment has been tested and found to comply with the limits for a Class B digital device, Pursuant to Part 15 of the FCC Rules. These limits are designed to provide reasonable protection against harmful interference in a residential installation. This equipment generates, uses and can radiate radio frequency energy and if not installed and used in accordance with the instructions, may cause harmful interference to radio communications. However, there is no guarantee that interference will not occur in a particular installation. If this equipment does cause harmful interference to radio or television reception, which can be determined by turning the equipment off and on, the user is encouraged to try to correct the interference by one or more of the following measures:

- Reorient or relocate the receiving antenna.
- Increase the separation between the equipment and receiver.
- Consult the dealer or an experienced radio/TV technician for help

Any changes or modification not expressly approved by the party responsible for compliance could void the user's authority to operate the device. Where shielded interface cables have been provided with the product or specified additional components or accessories elsewhere defined to be used with the installation of the product, they must be used in order to ensure compliance with FCC regulations.

This device complies with Part 15 of the FCC Rules. Operation is subject to the following two conditions: (1) This device may not cause harmful interference, and (2) this device must accept any interference received, including interference that may cause undesired operation.