

1 Check the Contents

Vérifier le contenu
 Compruebe el contenido

Call 561 922 6886 if any parts missing
 Appelez le 561 922 6886 si des pièces manquaient
 Llame al 561 922 6886 si faltan piezas



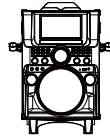
AC Power Adaptor
 Adaptateur Ca-Cc
 AC-DC Adaptador de Enchufe



AV Cable
 Câble AV
 Cable AV



Pre-recorded Karaoke CD+G Disc
 Disco CD + G pregrabada
 Disco CD + G-grabado Pre



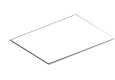
The Ultimate Bluetooth Party Machine
 La Ultime Machine De Fête Avec Bluetooth
 La última máquina de partido Bluetooth



Dynamic Microphone x 2
 Microphone Dynamique x 2
 Micrófono Dinámico x 2



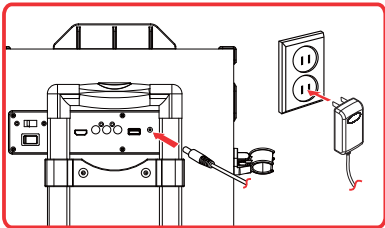
Instruction Manual
 Manuel D'instruction
 Manual de Instrucciones



Warranty Card
 Carte De Garantie
 Tarjeta de Garantía

2 Connect to the mains

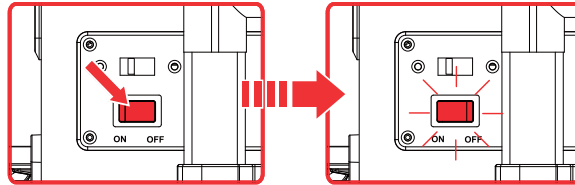
Raccorder au secteur
 Conectar a la red



3 Turn ON the Power

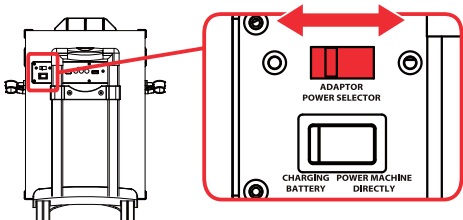
Allumer l'Appreil
 Conectar la alimentación

Press the POWER Button located at the back of the Cabinet
 Appuyez sur le bouton POWER situé à l'arrière de l'armoire
 Presione el botón POWER situado en la parte posterior del armario



4 Adaptor Power Selector

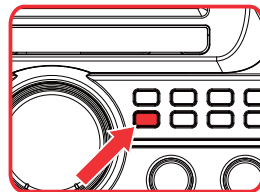
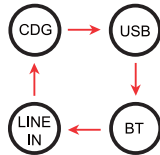
Sélecteur d'alimentation adaptateur
 Selector de potencia del adaptador



Left - Powered by Battery / Right - Powered by AC Power Adaptor;
 Gauche - Alimenté par batterie / Droite - Alimenté par l'adaptateur secteur;
 Izquierda - Accionado por la batería / Derecha - Accionado por el adaptador de la corriente alterna

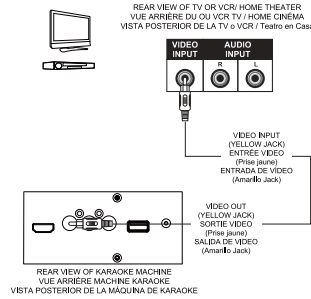
5 FUNCTION Button

FONCTION Du Bouton
 Botón de FUNCIÓN



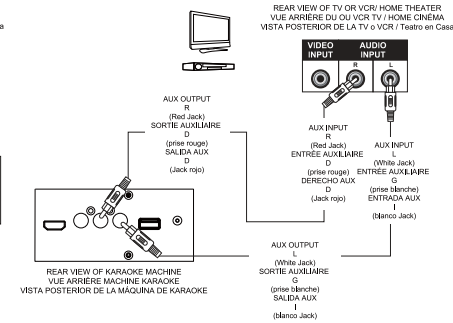
6 Video Connection

Connexion Vidéo
 Conexión de Video



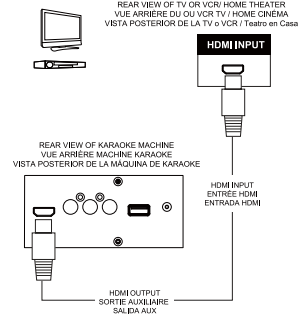
7 Audio Connection

Connexion Audio
 Conexión de Audio



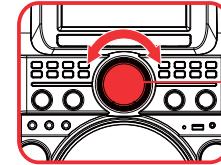
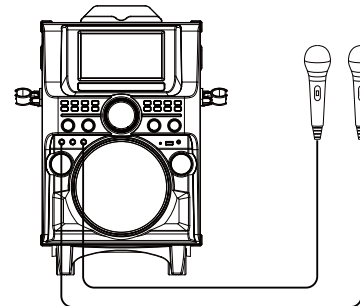
8 HDMI Connection

Connexion HDMI
 Conexión de HDMI

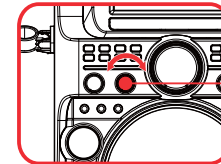


9 Setting up Your Microphone

Configuration de votre microphone
 Configuración de su micrófono



MASTER VOLUME Control Knob
 Contrôle VOLUME PRINCIPAL
 Control De VOLUMEN MASTRO



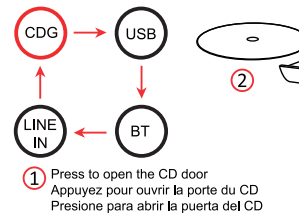
MIC VOLUME Control Knob
 Contrôle VOLUME MICRO
 Control De VOLUMEN DE MICRÓFONO

10 Insert a CDG

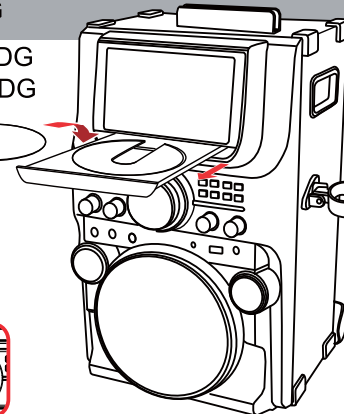
Insérez un CDG
 Insertar un CDG

10 Insert a CDG

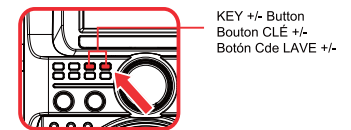
Insérez un CDG
 Insertar un CDG



1 Press to open the CD door
 Appuyez pour ouvrir la porte du CD
 Presione para abrir la puerta del CD



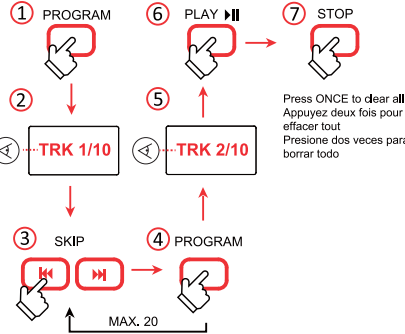
To start playing, press the PLAY/PAUSE button.
 Pour commencer la lecture, appuyez le bouton LECTURE/PAUSE une fois.
 Para empezar a sonar, pulse el botón SONIDO REPRODUCCION / PAUSA.



KEY +/- Button
 Bouton CLÉ +/-
 Botón Cde LAVE +/-

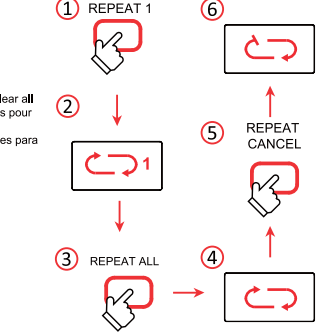
11 PROGRAM Track

Piste du programme
Pista del programa



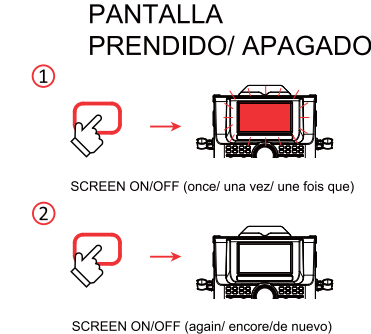
12 REPEAT Function

Fonction REPEAT
Función REPEAT



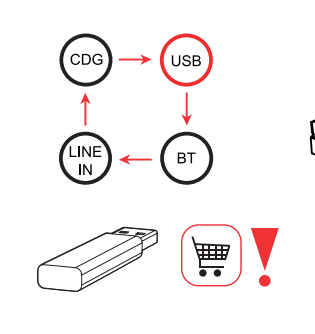
13 SCREEN ON/OFF

ECRAN
MARCHE/ ARRÊT
PANTALLA
PRENDIDO/ APAGADO



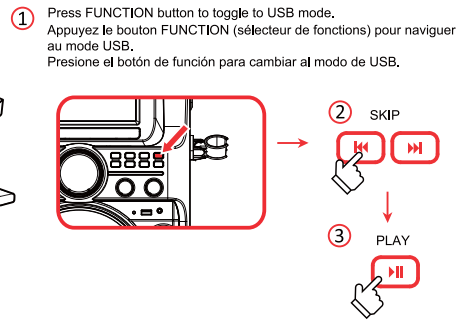
17 USB Connection

Connexion USB
Conexión de USB



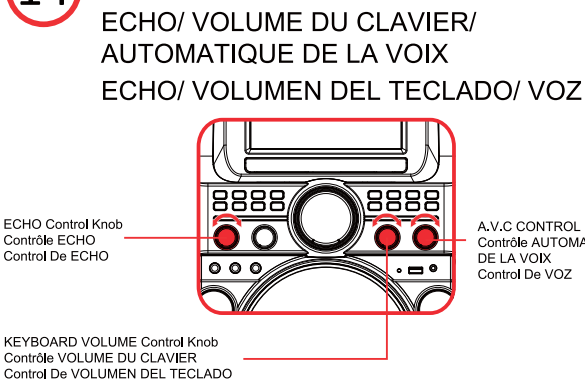
PLAYBACK Function

Fonction de lecture
Función de reproducción



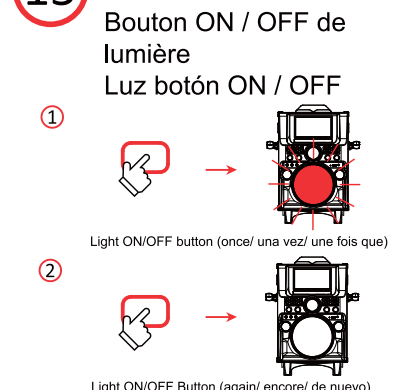
14 ECHO/ KEYBOARD VOLUME/ A.V.C

ECHO/ VOLUME DU CLAVIER/
AUTOMATIQUE DE LA VOIX
ECHO/ VOLUMEN DEL TECLADO/ VOZ



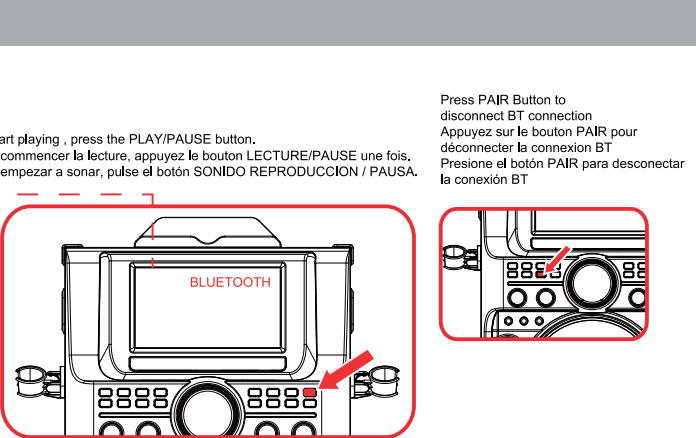
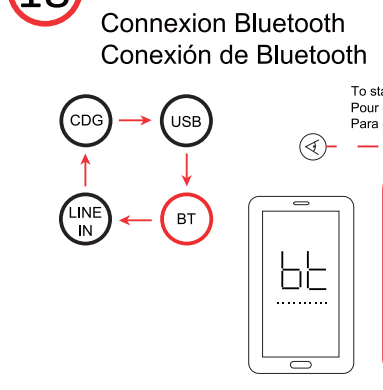
15 LIGHT ON/OFF Button

Bouton ON / OFF de
lumière
Luz botón ON / OFF



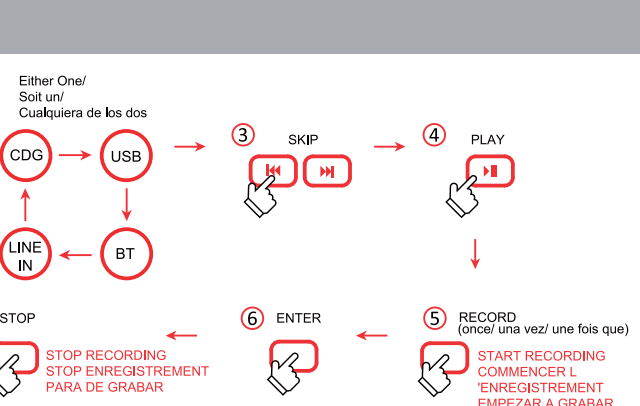
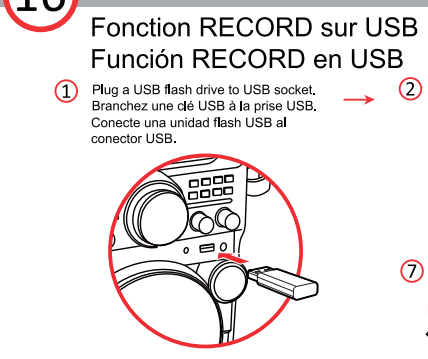
18 Bluetooth Connection

Connexion Bluetooth
Conexión de Bluetooth



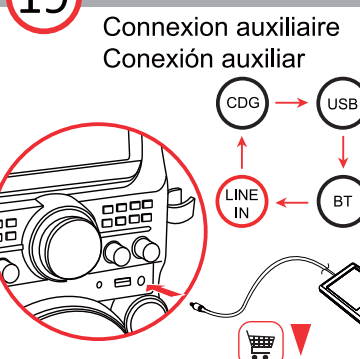
16 RECORD Function on USB

Fonction RECORD sur USB
Función RECORD en USB



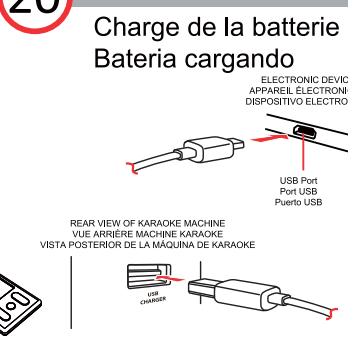
19 LINE IN Connection

Connexion auxiliaire
Conexión auxiliar



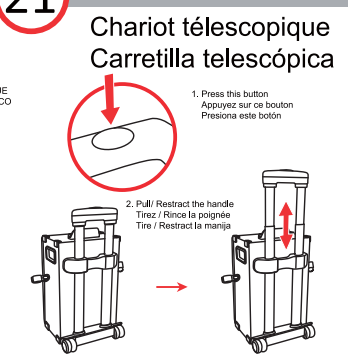
20 USB Charger

Charge de la batterie
Bateria cargando



21 Telescopic Trolley

Chariot télescopique
Carretilla telescópica



SPECIFICATIONS

Audio Section:
Output Power: 30W (RMS)
Output Impedance: 4 ohm
Power Section:
Input: AC 100-240V~50/60Hz 0.8A
Output: DC 15V = 2A
CD Player Section:
Frequency: 100Hz - 20 kHz

Signal - To - Noise Ratio: 50 dB
Number of programs:
20 Steps Random Access Programming
Microphone:
-73 dB 600 OHMS Impedance with
Ø 6.3 mm Dynamic Microphone
USB Charger: 5V 1A

Dimensions (W X H X D):
12.0 x 20.3 x 11.9 inch /
30.3 x 51.5 x 30.2 cm
Weight: 17.7 lb / 8.0 kg

CARACTÉRISTIQUES

Section audio:
Puissance de sortie: 30W (RMS)
Impédance de sortie: 4 ohm
Section d'alimentation:
Entrée: 100-240V~50/60Hz 0.8A
Sortie: DC 15V = 2A
Lecteur CD:
La réponse en fréquence: 100 Hz - 20 kHz

Rapport signal sur bruit: 50 dB
Nombre de programmes:
20 pistes mémoire de programme
Microphone:
-73 dB 600 OHMS Impédance avec
Ø 6,3mm Dynamique Microphone
Chargeur USB: 5V 1A

Dimensions (L x H x P)
12.0 x 20.3 x 11.9 inch /
30.3 x 51.5 x 30.2 cm
Poids: 17.7 lb / 8.0 kg

PRESUPUESTO

Sección de audio:
Potencia de salida (máximo): 30W (RMS)
Impedancia de salida: 4 ohm
Sección de potencia:
Entrada: 100-240V~50/60Hz 0.8A
Salida: DC 15V = 2A
Reproductor de CD:
Respuesta de frecuencia: 100 Hz - 20 kHz

Signals - to - noise ratio: 50 dB
Número de programa:
20 pistas de memoria de programa
Microfono:
-73 dB 600 OHMS Impedance con
Ø 6.3mm Dinámica Microfono
Cargador del USB: 5V 1A

Dimensiones (W x H x D):
12.0 x 20.3 x 11.9 inch /
30.3 x 51.5 x 30.2 cm
Peso: 17.7 lb / 8.0 kg

FCC ID: OWT-KS838
KS838BT-1706-01

This equipment has been tested and found to comply with the limits for a Class B digital device, pursuant to part 15 of the FCC Rules. These limits are designed to provide reasonable protection against harmful interference in a residential installation. This equipment generates, uses and can radiate radio frequency energy and, if not installed and used in accordance with the instructions, may cause harmful interference to radio communications. However, there is no guarantee that interference will not occur in a particular installation. If this equipment does cause harmful interference to radio or television reception, which can be determined by turning the equipment off and on, the user is encouraged to try to correct the interference by one or more of the following measures:

- Reorient or relocate the receiving antenna.
- Increase the separation between the equipment and receiver.
- Connect the equipment into an outlet on a circuit different from that to which the receiver is connected.
- Consult the dealer or an experienced radio/TV technician for help.

Caution: Any changes or modifications to this device not explicitly approved by manufacturer could void your authority to operate this equipment.

This device complies with part 15 of the FCC Rules. Operation is subject to the following two conditions: (1) This device may not cause harmful interference, and (2) this device must accept any interference received, including interference that may cause undesired operation.

This equipment complies with FCC radiation exposure limits set forth for an uncontrolled environment. The device can be used in portable exposure condition without restriction.