

PRODUCT NO.232

ASAHI PENTAX SV



EXPLODED ILLUSTRATIONS

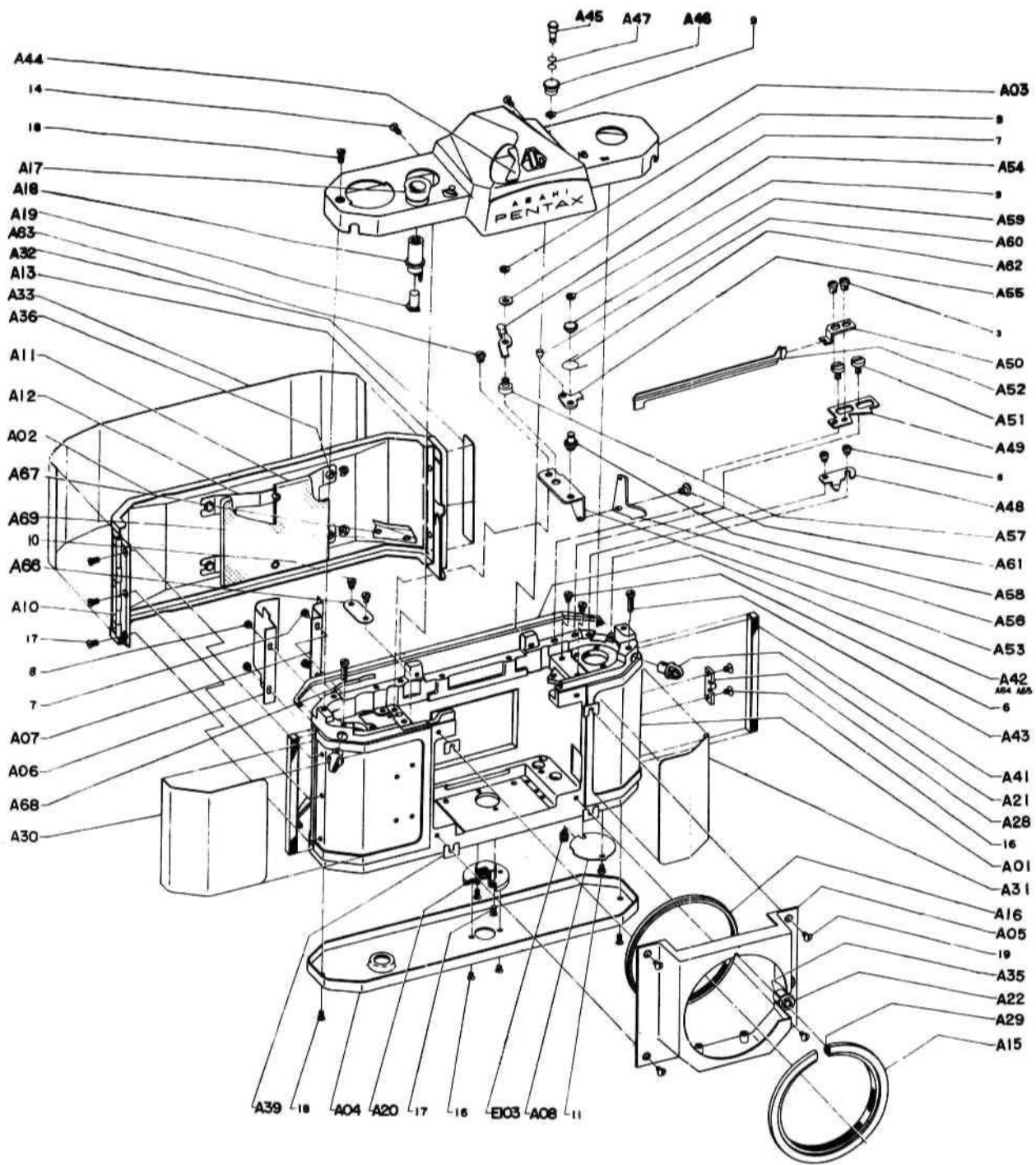


Fig.1

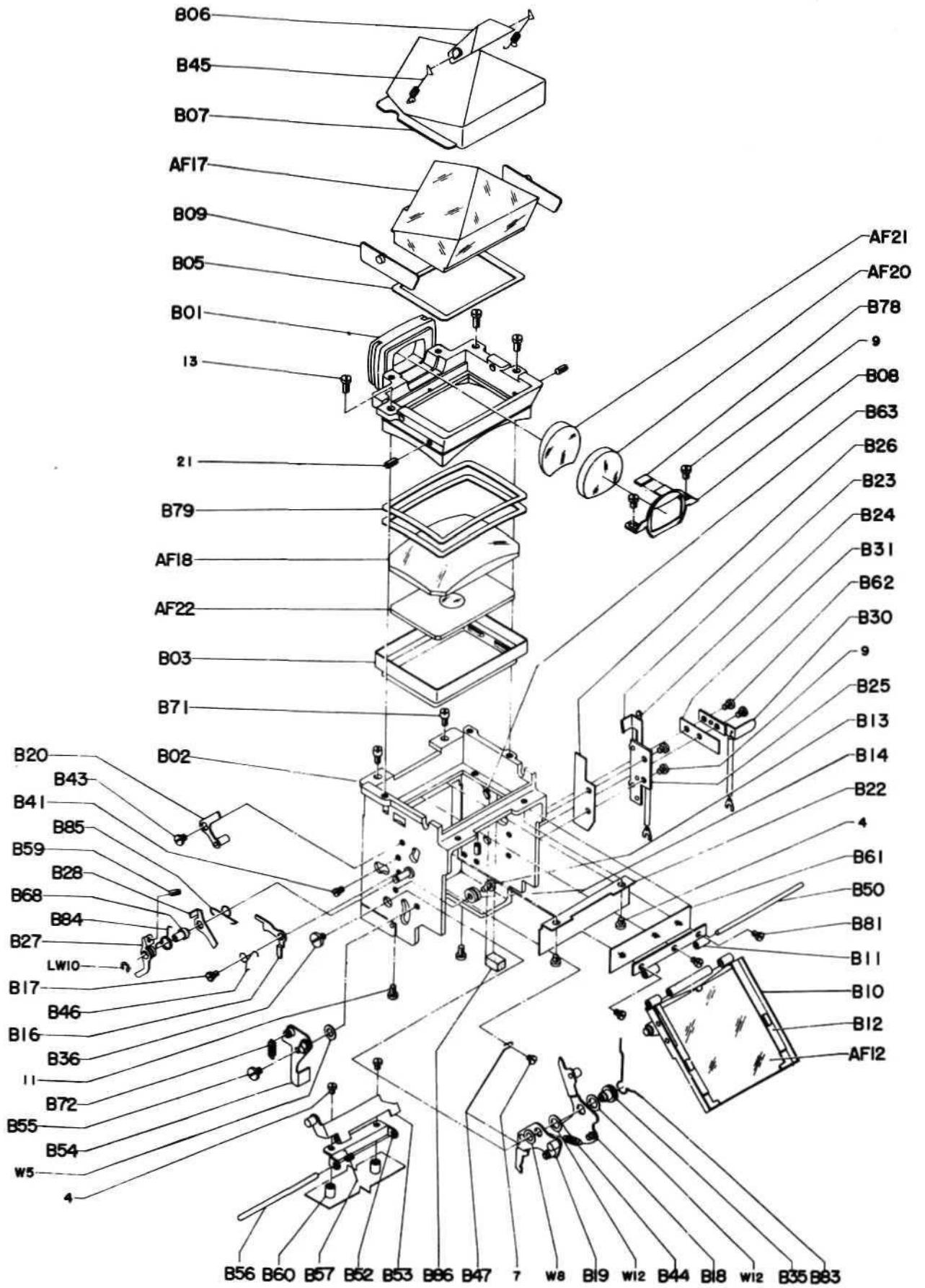


Fig.2

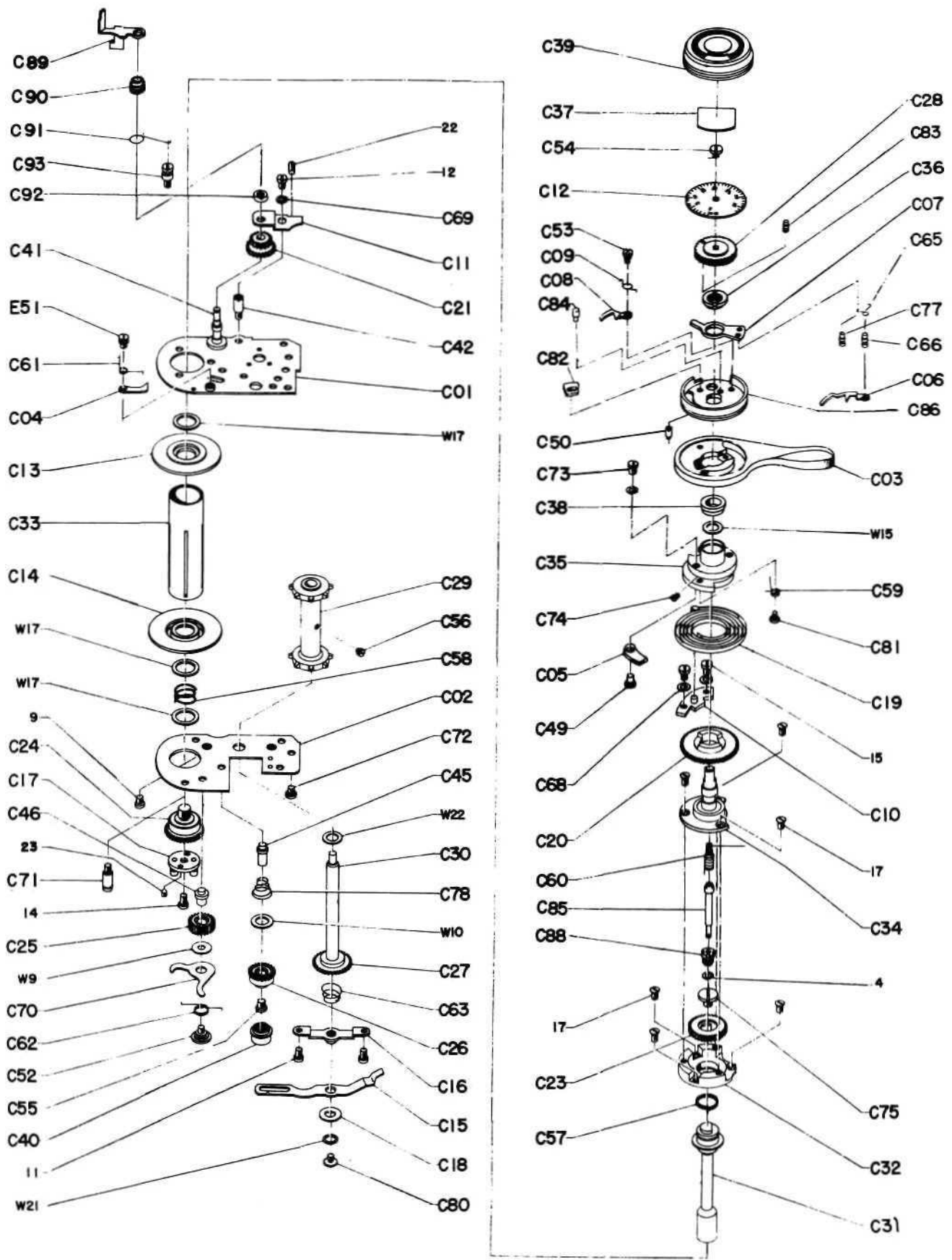


Fig. 3

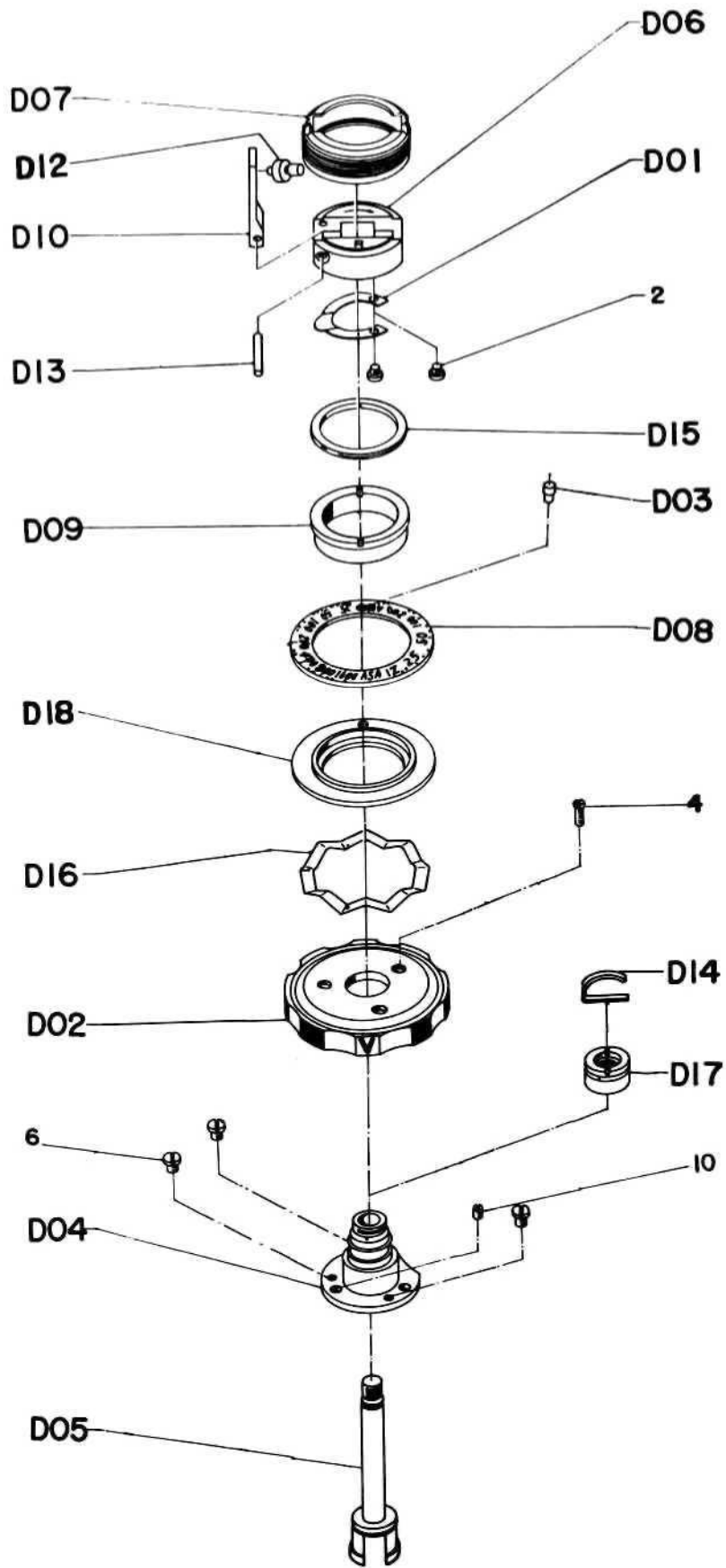


Fig.4

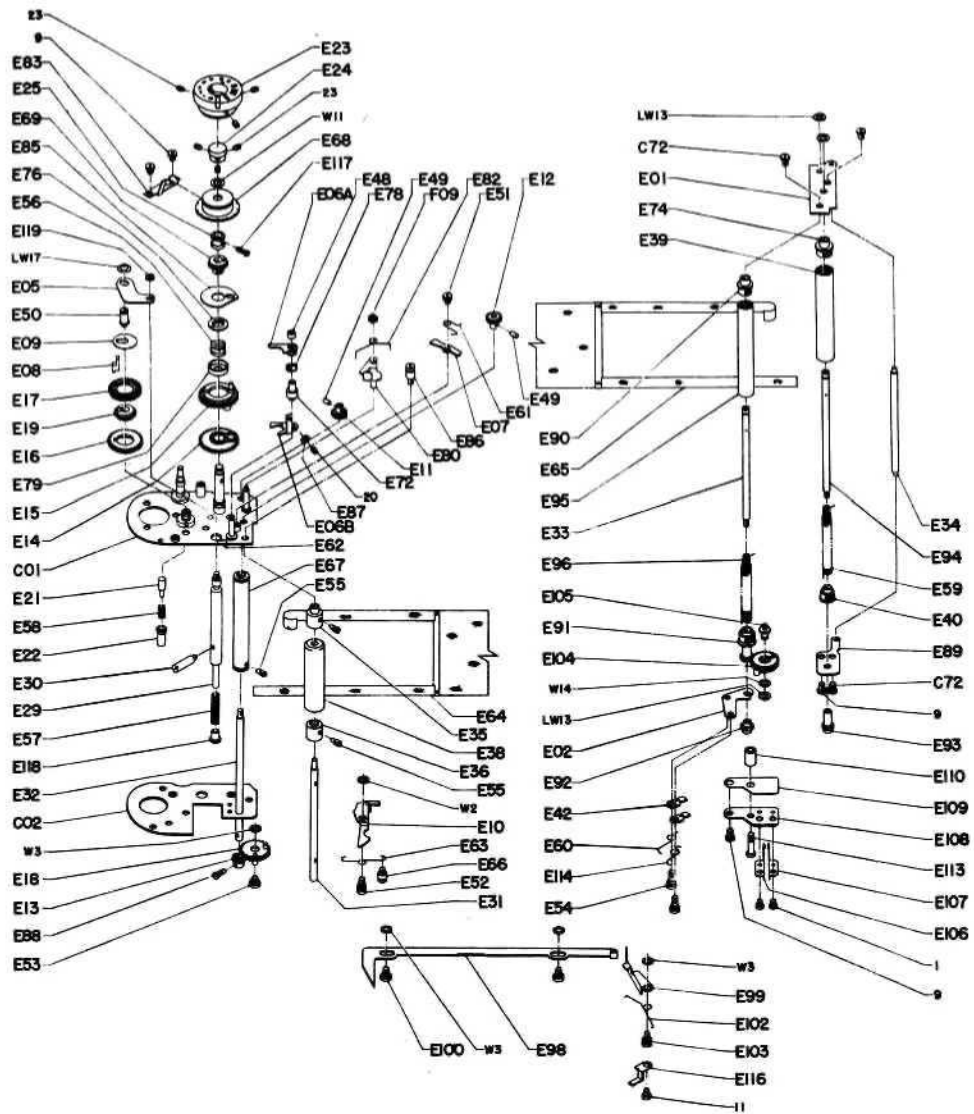


Fig5

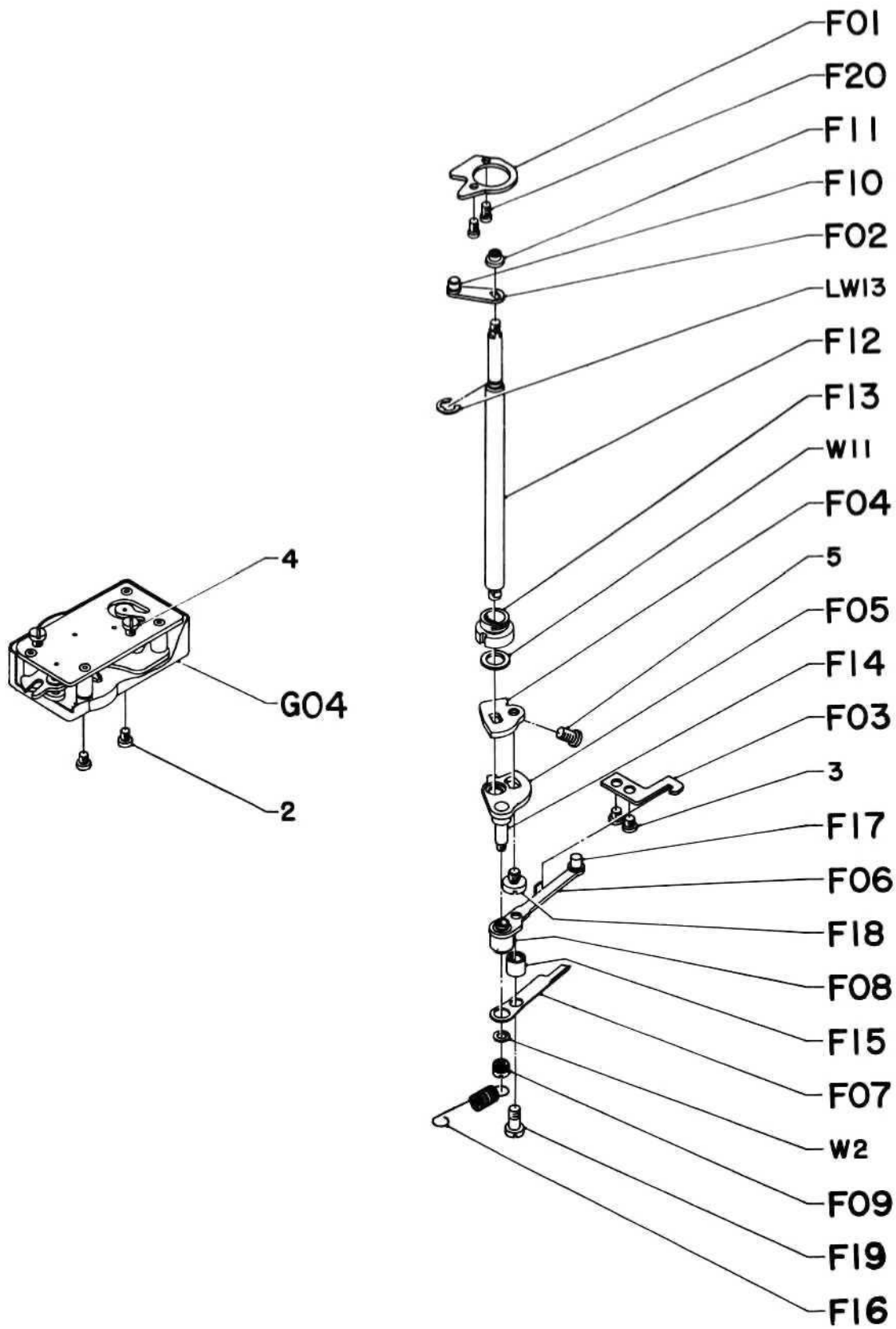


Fig.6

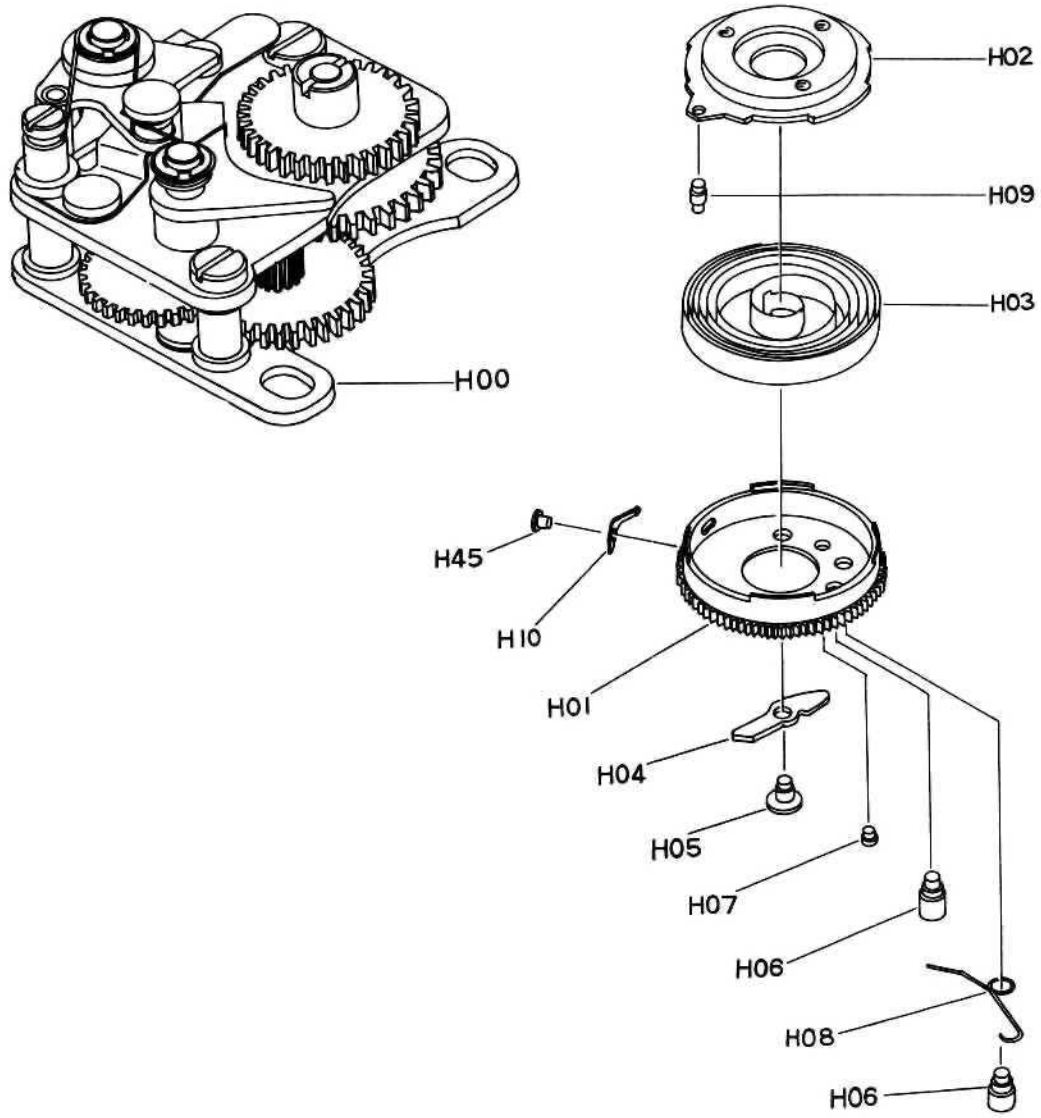


Fig.7

LIST OF SERVICE PARTS

Product No. 232

ASAHI PENTAX SV

Note: The parts with numbers starting with '0' are assembled parts ;
 the *marked parts are included in the '0' starting assembled parts;
 and these marked with 'o' are same as the parts for Product No. 230-2.

PART NO.	DESCRIPTION	QUANTITY
0A01	Body proper assembly (A01, E118)	1
0A02	Back cover assembly (A02, A09, A10, A13, A14, A25, A27, A32, A33, A34, A36, A37, A67, A69)	1
0A03	Top cover assembly (A03, A17, A40, A45, A46, A47, LW13)	1
A04	o Bottom cover	1
0A05	o Front cover assembly (A05, A15, A16, A22, A23, A24, A29, A35, B51, B52, B53, B56, B57, B60, small screw FM 1.4x2)	1
A06	o Sprocket cover	1
A07	o Light seal	1
A08	o Cassette receptacle	1
A09 *	o Cassette holder	1
A10 *	o Hinge	1
0A11	o Pressure plate assembly (A11, A12, A26)	1
A12 *	o Pressure plate spring	1
A13 *	o Key housing	1
A14 *	o Back cover key	1
A15 *	o Helicoid seat	1
A16 *	o Helicoid seat retainer screw	1
A17 *	o Shutter button seat	1
A18	o Shutter button	1
A19	o Shutter button shaft	1

A20	o	Tripod socket	1
A21	o	Strap hook	1
A22 *	o	Plug seat	1
A23 *	o	Outer pole	1
A24 *	o	Inner pole	1
A25 *	o	Pressure plate retainer stud A	2
A26 *	o	Pressure plate rivet	2
A27 *	o	Key housing column	2
A28	o	Key housing retainer plate	1
A29 *	o	Helicoid seat stopper	1
A30	o	Body covering, left	1
A31	o	Body covering, right	1
A32 *	o	Key housing covering	1
A33 *	o	Back cover covering	1
A34 *	o	Cassette holder rivet	2
A35 *	o	Earth	1
A36 *	o	Pressure plate retainer stud B	3
A37 *	o	Hinge rivet	3
A39	o	Front cover adjust washer	4
		(t = 0.05, 0.1, 0.15 and 0.2)	
A40 *	o	Indicator window	1
A41	o	Light seal	2
A42	J	Light seal	1
A43	o	Strap hook screw	2
A45 *		Release button	1
A46 *		Release button seat	1
A47 *		Release button spring	1
A48		Self-timer box stopper	1
A49		Guide plate	1
A50		Adjust plate	1
A51		Guide screw	1
A52		Coupler lever	1

0A53		Intermediate lever retainer plate assembly (A53, A54, A56, A57, A61, LW13)	1
A54 *		Intermediate lever A	1
0A55		Intermediate lever B assembly (A55, A60)	1
A56 *		Actuator lever	1
A57 *		Intermediate lever shaft A	1
A58		Intermediate lever shaft B	1
A59		Intermediate lever spring hanger	1
A60 *		Intermediate lever stud	1
A61 *		Actuator lever shaft	1
A62		Intermediate lever spring	1
A64		Light seal B	1
A65		Light seal C	1
A67 *		Light seal plate B	1
A69 *		Light seal rivet	2
B01	o	Prism seat	1
0B02		Mirror housing assembly (B02, B21, B76, R304)	1
B03	o	Ground glass frame	1
B05	o	Ground glass mask	1
B06	o	Prism retainer plate	1
B07	o	Prism cover	1
0B08	o	Magnifier retainer assembly (B08, B78)	1
0B09	o	Prism side protector assembly (B09, B33)	2
0B10	o	Mirror seat assembly (B10, B11, B12, B15, B42, B48, B49, B50)	1
B11 *	o	Mirror hinge	1
B12 *	o	Mirror retainer plate	1
B13	o	Mirror seat rest screw	1
B14	o	Mirror seat rest	1
B15 *	o	Mirror seat lug	1
B16	o	Mirror check lever	1

B17	o	Mirror check lever screw	1
0B18	o	Mirror actuator lever, top, assembly (B18, B39, B51)	1
0B19	o	Mirror actuator lever, bottom, assembly (B19, B38, B58, B70)	1
0B20	o	Curtain actuator lever assembly (B20, B40)	1
B21	o	Light seal	1
B22	o	Light seal	1
B23	o	FP lever A	1
B24 *	o	FP lever B	1
0B25	o	Sync seat assembly (B25, B23, B24, B26, B64, B65, B66, B73, B74, B77)	1
B26 *	o	Sync seat insulator	1
0B27	o	Actuator lever assembly (B27, B28, B59, B67, B68, B84)	1
B28 *	o	Bottom actuator lever	1
B29 *	o	2nd dia lever checker plate	1
0B30	o	X lever assembly (B30, B32, B73, B75, B77, B80)	1
B31	o	X lever insulator	1
B32 *	o	X lever retainer plate	1
B33 *	o	Protector plate pin	2
B35	o	Mirror actuator lever shaft	1
B36	o	Mirror actuator lever retainer screw	1
B37 *	o	2nd dia lever checker plate rivet	2
B38 *	o	Mirror actuator lever spring hanger A	1
B39 *	o	Mirror actuator lever spring hanger B	1
B40 *	o	Curtain actuator lever stay	1
B41	o	Actuator lever spring hanger	1
B42 *	o	Mirror seat lug stud	1
B43	o	Curtain actuator lever retainer screw	1
B44	o	Mirror seat spring	1
B45	o	Prism retainer spring	2

B46	o	Mirror check lever spring	1
B47	o	Bottom actuator lever spring	1
B48 *	o	Mirror seat lug rivet	2
B49 *	o	Mirror retainer plate rivet	2
B50 *	o	Mirror hinge shaft	1
B51 *	o	1st dia lever pin	2
B52 *	o	Dia lever support	1
B53 *	o	1st dia lever	1
0B54	o	2nd dia lever assembly (B54, B29, B37, B69)	1
B55	o	2nd dia lever retainer screw	1
B56 *	o	1st dia lever shaft	1
B57 *	o	1st dia lever spring	1
B58 *	o	Mirror actuator lever, bottom, stud	1
B59 *	o	2nd dia lever adjust screw	1
B60 *	o	Supporter column	2
B61	o	Light seal	1
B62	o	X lever retainer screw	2
B63	o	Focus adjust screw	3
B64 *	o	Contact A	2
B65 *	o	Contact B	2
B66 *	o	Sync lever rivet	6
B67 *	o	Actuator lever collar	1
B68 *	o	Actuator lever shaft	1
B69 *	o	Dia lever spring hanger A	1
B70 *	o	Dia lever spring hanger B	1
B71	o	Mirror housing retainer screw	2
B72	o	Dia lever spring	1
B73 *	o	Cord B	2
B74 •	o	Tube A	1
B75 *	o	Tube B	1
B76 *	o	Actuator lever column	1
B77 *	o	Lug plate	2

B78 *	o	Magnifier cushion	1
B79	o	Ground glass holder	2
B80 *	o	X lever rivet	1
B81	o	Mirror hinge screw	3
B83	o	Mirror checker spring	1
B84 *	o	Actuator lever coupler spring	1
B85	o	Actuator lever spring	1
B86	o	Mirror shock absorber	1
0C01	o	Top mec plate assembly (C01, C41, C43, C79, E20, E22, E26, E27, E28, E81, E120)	1
0C02	o	Bottom mec plate assembly (C02, C45, C46, C47)	1
C01		Rapid wind lever	1
C04	o	Non-return arm	1
C0S *	o	Lever seat lug	1
C06 *		Counter advance lug	1
0C07		Advance lug actuator assembly (C07, C06, C65, C66, C77)	1
C08 *		Retainer lug	1
C09 *		Retainer lug spring	1
0C10	o	Lever stopper assembly (C10, C44)	1
C11	o	Stopper	1
C12		Counter dial	1
C13	o	Top take-up spool brim	1
C14	o	Bottom take-up spool brim	1
C15	o	Coupler lever	1
0C16	o	Coupler lever seat assembly (C16, C48)	1
0C17	o	Pin adjust plate assembly (C17, C51, C76. set screw tapered 1.7x2)	1
C18	o	Half moon washer	1
C19 *	o	Spring	1

C20		Top 1st gear	1
0C21	o	Top 2nd gear assembly (C21, C22)	1
C22 *	o	Top 3rd gear	1
C23 *	o	Top main gear	1
C24	o	Bottom main gear	1
C25	o	Bottom 1st gear	1
C26	o	Bottom 2nd gear	1
0C27	o	Bottom 3rd gear assembly (C27, C30)	1
0C28		Transport gear assembly (C28, C83)	1
C29	o	Sprocket	1
C30 *	o	Sprocket shaft	1
0C31	o	Wind-up shaft assembly (C31, C23, C32, C57, C75)	1
C32 *	o	Wind-up shaft bearing	1
C33	o	Take-up spool shaft	1
0C34		Rapid wind lever shaft assembly (C34, C60, C85, C88, LW10)	1
0C35		Wind-up lever seat assembly (C35, COS, C19, C49, C59, C74, C81).....No. 1-5	1
C36		Actuator plate retainer screw	1
C37 *		Counter dial window	1
C38		Lever seat collar	1
0C39		Cover ring assembly (C39, C37)	1
C40	o	R button	1
C41 *	o	Top 1st gear column	1
C42	o	Stopper column	1
C43 *	o	Non-return arm seat	1
C44 *	o	Spring hanger column	1
C45 *	o	Bottom 2nd gear shaft	1
C46 *	o	Bottom 1st gear shaft	1
C47 *	o	Coupler lever collar	2
C48 *	o	Coupler lever shaft	1
C49 *	o	Lever seat rivet	1

C50	Counter advance stud	1
C51 *	o Coupler lever pin	1
C52	o R lever retainer screw	1
C53 *	Retainer lug screw	1
C54	Counter retainer screw	1
C55	o Bottom 2nd gear screw	1
C56	o Sprocket screw	1
C57 *	o Wind-up shaft spring	1
C58	o Take-up spool spring	1
C59 *	o Lever seat lug spring	1
C60 *	Counter spring	1
C61	o Non-return arm spring	1
G62	o R lever spring	1
C63	o Sprocket seat spring	1
C64	o Spring washer	2
C65 *	Advance lug spring	1
C66 *	Advance lug rivet	1
G68	o Stopper washer A	2
C69	o Stopper washer B	1
C70	o R lever	1
C71	o Slow speed spring	1
C72	o Bottom mec plate retainer screw	4
C73	o Rapid wind lever retainer screw	2
C74 *	Spring retainer screw	1
C75 *	o Top main gear retainer screw	1
C76 *	o Pin adjust plate stud	1
C77 *	Advance lug spring hanger	1
C78	o Bottom 2nd gear spring	1
C79 *	o Gear column pin	1
C80	o Coupler lever retainer screw	1
C81 *	o Lug spring retainer screw	1
C82 *	Actuator stopper	1

C83 *	Counter dial stopper A	1
C84 *	Counter dial stopper B	1
C85 *	Counter shaft	1
0C86	Counter housing assembly (C86, C08, C09, C53, C82, C84, small screw FM 1.4 x 1.8)	1
C87 o	Light seal	1
C88 *	Counter shaft bearing, bottom	1
C89 *	Reset lever	1
0C90	Reset lever assembly (C90, C89)	1
C91	Reset lever spring	1
C92 o	Stopper nut	1
C93	Reset lever spring hanger	1
D01 *	Hoof spring	1
D02 *	Cocking wheel	1
D03 *	Reminder dial stud	1
D04	Shaft bearing	1
D05	Rewind shaft	1
0D06	Rewind knob assembly (D06, D01, D07, D10, D11, D12, D13, D15>	1
D07 *	Rewind cover ring	1
0D08	ASA dial assembly (D08, D02, D03, D09, D16, D18)	1
D09 *	Dial retainer nut	1
D10 *	Crank	1
D11 * o	Nipple	1
D12 *	Crank shaft	1
D13 * o	Crank pin	1
D14 *	Shaft spring	1
D15 *	Retainer ring	1
D16 * o	Dial seat spring	1
0D17	Nut assembly (D17, D14)	1
D18 *	ASA dial	1

E01	o	Top shaft plate	1
E02	o	1st curtain shaft plate	1
E03 *	o	1st curtain edger	1
E04 *	o	2nd curtain edger	1
E05	o	Release plate	1
0E06	o	Bulb lever assembly (E06A, E06B, E71, E72, B78, E87, set screw flat 1.4x2.5)	1
E06A *	o	Top bulb lever	1
E06B *	o	Bottom bulb lever	1
E07	o	1st curtain checker arm	1
E08	o	Spill	1
E09	o	Spill receptacle plate	1
0E10	o	Pinion coupler lever assembly (E10, E75)	1
0E11	o	2nd curtain pinion assembly (E11, E32, E49)	1
E12 *	o	1st curtain pinion	1
E13	o	Coupler pinion	1
0E14	o	Bottom selector gear assembly (E14, E44, E73)	1
0E15	o	Top selector gear assembly (E15, E43, E70, E77, E84)	1
0E16	o	Bottom idling gear assembly (E16, E19)	1
E17	o	Top idling gear	1
0E18	o	Coupler gear assembly (E18, E45, E46)	1
E19 *	o	Idling gear collar	1
E20 *	o	Idling gear shaft	1
E21	o	Spill rest	1
E22 *	o	Spill rest collar	1
E23	o	Speed dial	1
E24	o	Index ring	1
E25	o	Selector collar	1
E26 *	o	Selector gear shaft	1
E27 *	o	Bulb lever shaft	1
E28 *	o	1st curtain checker arm seat	1

E29	o	Shutter rod	1
E30	o	Actuator rod	1
E31 *	o	1st curtain pinion shaft	1
E32 *	o	2nd curtain pinion shaft	1
E33 *	o	1st curtain shaft	1
E34	o	Curtain roller, small	1
E35 *	o	1st curtain wind shaft, top	1
E36 *	o	1st curtain wind shaft, bottom	1
E37 *	o	Curtain roller bearing	2
0E38	o	Curtain roller, large, assembly (E38, E37)	1
E39 *	o	2nd curtain pipe	1
E40 *	o	2nd curtain wind shaft bearing, bottom	1
E41 *	o	Wind shaft bearing	2
E42	o	Curtain spring adjust lug	2
E43 *	o	Top selector gear stud	1
E44 *	o	Selector gear retainer ring	1
E45 *	o	Slow speed lever actuator stud	1
E46 *	o	Coupler gear stud	1
E47 *	o	Edger rivet	4
E48	o	Bulb lever nut	1
E49 *	o	Pinion retainer pin	2
E50	o	Idling gear retainer screw	1
E51	o	1st curtain checker arm retainer screw	2
E52	o	Pinion coupler lever retainer screw	1
E53	o	Coupler gear retainer screw	1
E54	o	Adjust lug screw	2
E55 *	o	Pinion shaft retainer screw (Only 2 supplied with 0E64)	3
E56	o	Cam shaft spring	1
E57	o	Shutter rod spring	1
E58	o	Spill spring	1
E59 *	o	2nd curtain spring	1

B60	o	Adjust lug spring A	1
E61	o	1st curtain checker arm spring	1
E62	o	Bulb lever spring	1
E63	o	Pinion coupler lever spring	1
0E64	o	1st curtain assembly (E64, E03, E12, E31, E33, E35, E36, E47, E49, E55, E90, E91, E95, E96)	1
0E65	o	2nd curtain assembly (E65, E04, E39, E40, E41, E47, E59, E67, E74, E94)	1
E66	o	Coupler lever spring hanger	1
E67 *	o	Curtain pipe	1
E68	a	Speed selector disc	1
E69 *	o	Cam shaft	1
E70 *	.3	Speed selector pin	1
E71 *	o	Bulb lever collar, top	1
E72 *	o	Bulb lever collar, bottom	1
E73 *	o	Retainer ring rivet	1
E74 *	o	2nd curtain wind shaft metal, top	1
F75 *	o	Pinion coupler lever pin	1
E76 *	o	Cam shaft nut	1
E77 *	o	Selector gear stopper	1
E78 *	o	Bulb coupler spring	1
E79	o	Cam shaft spring receptacle	1
E80	o	'Cocked' indicator	1
E81 *	o	'Cocked' indicator shaft	1
E82	o	'Cocked' indicator spring	1
E83	o	Click spring	1
E84 *	o	Selector gear stopper rivet	1
0E85	o	High speed cam assembly (E85, E69, E76)	1
E96	o	1st curtain checker arm stopper	1
E87 *	o	Bulb lever adjust nut	1
E88	o	Coupler pinion screw	1
E89	o	2nd curtain shaft plate	1

E90	*	o	1st curtain wind shaft bearing, top	1
E91	*	o	1st curtain wind shaft bearing, bottom	1
E92		o	Curtain spring adjust gear A	1
E93		o	Curtain spring adjust gear B	1
E94	*	o	2nd curtain shaft	1
E95	*	o	1st curtain pipe	1
E96	*	o	1st curtain spring	1
E97	*	o	Bounce stopper	1
E98		o	Bounce stopper actuator lever	1
E99		o	Bounce stopper lever	1
E100		o	Bounce stopper actuator lever screw	2
E101	*	o	Bounce stopper rivet	1
E102		o	Bounce stopper spring	1
E103		o	Bounce stopper lever screw	1
0E104		o	Sync gear assembly (E104, E97, E101, E111, E115)	1
E105		o	Sync gear column	
E106	*	o	X contact A	
0E107		o	X contact B assembly (E107, B64, B65, B66, E106, E108, E109, E112)	1
E108	*	o	X contact seat	1
E109	*	o	X insulator	1
E110		o	X contact support	1
E111	*	o	X contact pin	1
E112	*	o	X contact column	2
E113		o	X contact retainer screw	1
E114		o	Adjust lug spring B	1
E115	*	o	Insulator tube	1
E116		o	Bounce stopper lever retainer	1
E117		o	Selector shaft tube retainer screw	1
E118	*	o	Shutter rod receptacle	1
E119		o	Release plate nut	1
E120	*	o	Gear shaft rivet	5

F01	o	Slow speed cam	1
0F02	o	Cam coupler plate assembly (F02, F10)	1
F03	o	Time stopper	1
0F04	o	Bottom adjust plate assembly (F04, F12)	1
0F05	o	Top adjust plate assembly (F05, F06, F07, F08, F09, F14, F15, F17, F19, W2)	1
F06 *	o	Slow speed actuator lever	1
F07 *	o	Slow speed lever	1
F08 *	o	Slow speed Jever collar	1
F09 *	o	Lever support nut (Only 1 supplied with 0F05)	2
F10 *	o	Cam coupler plate stud	1
F11	o	Cam coupler plate nut	1
F12 *	o	Slow speed rod	1
F13	o	Slow speed rod receptacle	1
F14 *	o	Lever support	1
F15 *	o	Slow speed lever seat	1
F16	o	Slow speed spring	1
F17 *	o	Slow speed actuator lever stud	1
F18	o	Adjust plate screw	1
F19 *	o	Slow speed lever retainer screw	1
F20	o	slsw speed cam retainer screw	2
0G00	o	Slow speed governor assembly (G01—G19)	1
AF12	o	Mirror	1
AF17	o	Pentaprism	1
AF18	o	Ground glass	1
0AF20	o	Magnifier front element assembly (AF20, 1AF21)	1
AF21 *	o	Magnifier rear element	1
AF22	o	Fresnel lens	1

0H01	Self-timer box assembly (H01, H03, H04, H05, H06, H07, H08, H10, H45)	1
0H02	Self-timer box cover assembly (H02, H09)	1
H03 •	Spring	1
H04 *	Self-timer box lug	1
H05 *	Self-timer box lug shaft	1
H06 *	Spring hanger	2
H07 *	Lug stopper	1
H08 *	Lug spring	1
H09 *	Cover stud	1
H10 *	Hook	1
H45 *	Hook retainer rivet	1
0H00	Self-timer governor assembly (H11-H44, H46)	1

LIST OF STANDARD PARTS

Product No. 232

ASAHI PENTAX SV

Small Screws

<u>Index No.</u>	<u>Name</u>	<u>Surface Treatment</u>	<u>Place of Use</u>	<u>Quantity</u>	
1	Flat medium	1.2x1.6	Nickel plated	G02, G13	2
			Black	E112, B77	2
			Black	G04, G14	2
2	"	1.4x1.2	Black	D01, D06	2
3	"	1.4x1.4	Black	F03, C02	2
24	"	1.4x1.8	Black	C82, C86	1
4	„	1.4x2	Black	A49, A50	2
				C82, C86	1
				A01, G01	2
				B52, B60	2
5	"	1.4x3	Black	F04, F05	1
				B02, B47	1
7	"	1.7x1.8	Black	A01, A07	2
				A01, H12	2
8	"	1.7x2	Black	A01, A06	2
				A01, A53	1
				A01, A48	2
				A01, A89	1
9	„	1.7x2.5	Black	A01, E108	1
				A01, E83	2
				A01, D04	2
				A01, C02	1
				B02, B25	2
				B01, B08	2

<u>Index No.</u>	<u>Name</u>	<u>Surface Treatment</u>	<u>Place of Use</u>	<u>Quantity</u>
11	Flat medium 1.7x3	Black	A01, B02	2
			A01, A08	1
			C16, C47	2
12	" 1.7x3.5	Black	C11, C42	1
13	" 1.7x5	Black	B01, B02	3
14	" 2x3	Black	C17, C24	1
15	" 2x4.5	Black	A01, C10	2
25	Round flat medium 1.4x2	Black	D02, H02	3
16	Saucer medium 1.7x2.2	Chrome plated	A04, A20	2
			A01, A28	2
17	" 1.7x3.5	Black	A01, C32	3
			A01, A20	2
			A01, A10	3
			C32, C34	3
18	" 2x3.5	Chrome plated	A01, A03	2
			A01, A04	2
19	Round saucer medium 1.7x3	Chrome plated	A01, A03	2
			A01, A05	4
20	Set flat 1.4x2.5	Nickel plated	E06A, E06B	1
21	" 1.7x4	Nickel plated	C01, B09, AF17	2
22	" 1.7x4.5	Nickel plated	A01, C11	1
26	Set tapered 1.4x1.6	Black	C39, C86	3
23	" 1.7x2	Nickel plated	A01, D04	2
			C17, C24	2
			E24, E26	3
			E23, E68	3

Washers (Note: Asterisk * denote quantity which is subject to change.)

<u>Code</u>	<u>Material</u>	<u>Thickness (mm)</u>	<u>Place of Use</u>	<u>Quantity</u>
W2	Steel	0.03, 0.05, 0.1	OH00	2*
			F09, F14	1*
	Brass	0.4	E10	1
W3	Steel	0.3	A51	2
			E18	1
			E99	1
	Phosphor-bronze	0.2	E98	2
W5	Steel	0.05, 0.1, 0.2	B02, B54, B55	1
			A01, A05	4*
W8	Phosphor-bronze	0.1	B02, B35	1
W9	Brass	0.4	C70	1
W10	Steel	0.05	C26	1
W11	Phosphor-bronze	0.1, 0.15, 0.2, 0.5	A27	2*
			F12	1*
			E26	1*
W12	Phosphor-bronze	0.05, 0.07, 0.1	B18, B35	1*
			B19, B35	1*
W13	Steel	0.3	A27	2
W14	Phosphor-bronze	0.15	A57	1
		0.1	E105	1
W16	Steel	0.05, Oil	C35, C38	1
W17	Bakelite	0.4	C13, C31	1
	Steel	0.2	C14, C24	3
W18	Steel	0.1	D02, D09	1
W21	Steel	0.05, 0.1	C48	1
W22	Phosphor-bronze	0.7, 0.8	C30	1
W25	Phosphor-bronze	0.05, 0.1	D04	1*

Lock Washers

<u>Code</u>	<u>Material</u>	<u>Thickness (mm)</u>	<u>Place of Use</u>	<u>Quantity</u>
LW10		0.2	C41	1
			C85	1
			B76	1
LW13		0.3	A45	1
			A57	1
			A58	1
			E33	1
			E94	1
			E105	1
			F12	1
LW17		0.4	E50	1
„ (Black)		„	A36	2