

Bluekite

Bluetooth USB2.0 Pen Drive

User Guide

Declaration

Product warranty or service will not be extended if: (1) the product is repaired, modified or altered, unless such repair, modification or alteration is authorized in writing by us ; or (2) the serial number of the product is defaced or missing.

Package list:

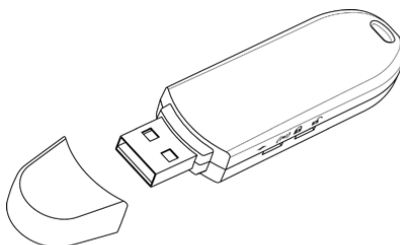
- Bluetooth USB2.0 Pen Drive x 1
- USB Cable x1
- Neck Strap x1
- Utility CD x 1
 - . Mass storage driver for Windows 98SE only
 - . Bluetooth software/driver (BTW) for Windows XP/2000/ME/98SE
 - . mySecurity 2.5 Lite software for Windows XP/2000/ME/98SE
 - . WinRoute Lite software (30-day trial version) for Windows ME/98SE only
 - . User Guide
 - . Multi-language Quick Setup Guide
- Quick Setup Guide x 1
- Warranty Card x 1

1. Introduction

TH600 Bluetooth USB2.0 Pen Drive

The Bluekite TH600 Bluetooth USB2.0 Pen Drive is a compact and multipurpose product providing an efficient and easy solution for wireless applications and data storage.

The built-in Bluetooth™ wireless



technology enables the Bluekite-installed computer to communicate with other Bluetooth-enabled devices freely and effortlessly. Additionally, the Bluekite USB2.0 Pen Drive also bundles a Bluetooth software for performing wireless applications such as file transfer, network access, dial-up, networking and so on. Moreover, an innovative Bluetooth profile “Human Interface Device (HID)” is included to enable your computer to use Bluetooth cordless keyboard and mouse. The Bluekite USB2.0 Pen Drive’s generous storage capacity and USB2.0 high transfer speed allows users to store, transfer, and carry the personal computer files easily. Alternatively, they can choose transfer the files via high-speed and “plug & play” USB2.0 interface or the Bluetooth wireless connection.

1.1 Safety Precautions

Please follow the safety precautions carefully before you use the “Bluekite USB2.0 Pen Drive” device and the application software. Please make sure that you use the product correctly.

- Do not allow any child attempting to swallow the product.
- Do not attempt to disassemble or alter any part of the product that is not described in this guide.
- Do not allow the product to come into contact with water or other liquids. In the event that water or other liquids enter the interior, immediately unplug the product from the computer. Continue use of the wet product may result in fire or electrical shock. Please consult your product distributor or the closest support center.
- Do not handle the product to do the plug and unplug operation if your hands are wet. Otherwise it will cause electrical shock.
- Do not place the product near a heat source or expose them to direct flame or heat.
- Never place the product close to equipment generating strong electromagnetic fields. Exposure to strong magnetic fields may cause malfunctions or corrupt data.

1.2 System Requirements

It is necessary to install corresponding application software before starting to use the Bluekite USB2.0 Pen Drive. Therefore, please check your system in advance and ensure it meets in the minimum requirements as described below.

- Processor: Intel Celeron / Pentium III / Pentium 4;
AMD Duron / Athlon; or the higher class CPU
- Operating System: Windows 98SE / ME/ 2000 / XP;
Mac OS X 10.2.6; or the later version
- System Memory: 32MB at least
- Hard Drive Free Space: 18MB at least

1.3 Product Specification

Product	Bluekite USB2.0 Pen Drive
General Radio	Bluetooth Class II, 10 meters radio coverage (in open space) Carrier Frequency: 2.4 ~ 2.483GHz
Spread Spectrum	FHSS (Frequency Hopping Spread Spectrum)
Bluetooth Data Rate	Up to 1 Mbps
Antenna	Ceramic Antenna
I/O Interface	USB 2.0 (Backward compatible with USB 1.1)
Flash Memory	Capacity: 128MB / 256 MB / 512MB Reading Speed: Up to 9 MB/s (USB 2.0) Writing Speed: Up to 8 MB/s (USB 2.0)
Input Power	DV 5V (USB Power)
Switch	Flash Memory: write protection on / off Bluetooth: radio on /off
LED Indicator	Flash Memory: power on / off Bluetooth: radio on /off
Environmental	Operating Temperature: -10°C ~ +65°C Storage Temperature: -30°C ~ +80°C
Dimensions	78.9 x 22.1 x 10.2 mm, 14g
Bluetooth Features	Wireless -HID (Bluetooth Mouse and Bluetooth Keyboard compliant) -Dial-up Networking

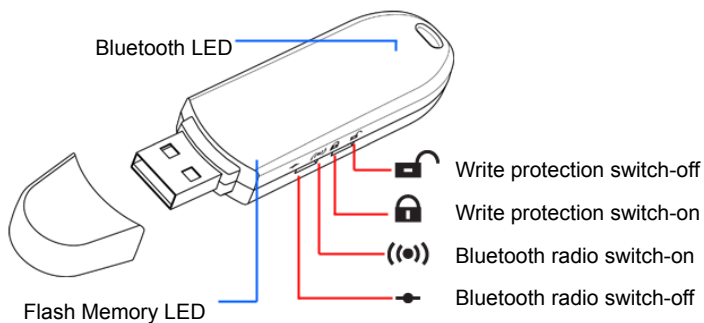
BLUEKITE USB2.0 Pen Drive – User Guide

- Network Access (1 master, 7 slaves)
- File Transfer
- Information Exchange
- Information Synchronization
- Send/Receive Fax (needs Fax software)
- Serial Port services
- Bluetooth Headset supported

Flash Memory Features

- Write protect switch to prevent accidental erasure
- High-speed data reading/writing via USB 2.0 interface
- Erase cycles are up to 1,000,000 times erase-rewrite
- Data retention are up to 10 years -No external power supply needed

1.4 Hardware Introduction



Bluetooth radio switch: If you put the switch at “ON” position, the Bluetooth wireless functions will be launched.

Write protection switch: If you put the switch at “ON” position, the Flash memory will be in the write protection mode and the stored files are enabled to read only.

BLUEKITE USB2.0 Pen Drive – User Guide

Bluetooth LED indicator: If the Bluetooth wireless functions are launched, the Bluetooth LED indicator will flash blue light.

Flash memory LED indicator: Once the device is in proper operation, the LED will flash.

CAUTION: Sometimes, you want to enable/disable the Bluetooth wireless functions during the read/write operation, however, please unplug the Bluekite USB2.0 Pen Drive *at first* to keep the completeness of your computer data, and then switch on/off the Bluetooth radio. Afterward you can plug the Bluetooth USB2.0 Pen Drive into the computer again to continue using it.

Note. The default settings of the Bluekite USB2.0 Pen Driver are “Write protection switch-off” and “Bluetooth radio switch-off”

2. Pen Drive (Flash Disk) Usage

2.1 Install Mass Storage Drive (Windows 98SE only)

Due to Windows 98SE does not support the default *USB Mass Storage Drive*, so you have to install the driver manually. To install Windows 98SE driver, please insert the Utility CD into the CD-ROM drive. After the CD menu launched, please select your language and then press on “Install Mass Storage Drive” button to install the driver.



Figure 2.1.1 - My Bluetooth Places window

Note: If the Auto-Run function of CD-ROM is enabled (in Windows, the default setting of this function is usually enabled), then installation program will start automatically. If not, you can utilize the Windows Explorer to browse CD content and execute Setup.exe manually.

After the installation finished, you can use the pen drive directly.

2.2 General Flash Disk Usages

2.2.1 Plug and Play

When you plug the Bluekite USB2.0 Pen Driver into the computer installed Windows XP/2000/ME, you can see a “Removable Disk” icon in the file manager window. Then, you can use the drive directly.

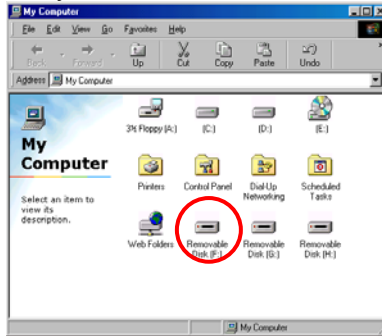


Figure 2.2.1.1 - My Computer window

Windows 98SE does not support the default *USB Mass Storage Drive*, and you have to install the driver manually based on “2.1 Install Mass Storage Drive” of this user guide if you use Windows 98SE. After the installation finished, you can use the pen drive directly and you will see the “Removable Disk” icon.

2.2.2 Read/Write and Write Protection

You can store or delete files in the device as a hard disk. The read/write operation of the device is the same as that of a hard disk. Moreover, you can switch on the write protection to avoid overwriting or deleting the important files.

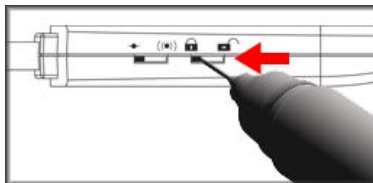


Figure 2.2.2.1 – Switch on the write protection function

2.2.3 Unplug

You can remove the device directly after you finish your job with the device in Windows XP O.S.



Figure 2.2.3.1 – Safe removal icon

However, in Windows 2000/ME/98SE O.S., please follow the safe removal procedure: You can find a safe removal icon at the Windows toolbar. Double click the *safe removal* icon, and the *Unplug or Eject Hardware* window will be popped up. You can select the device you want to remove. Then, click the “Stop” button. After that you can unplug the device from the USB port of your computer.

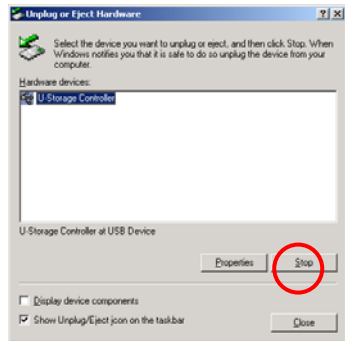


Figure 2.2.3.2 – Unplug or Eject Hardware window

CAUTION: When you want to remove the “USB Flash Disk” device, make sure the *Flash Memory LED* is not flashing. When the LED flashes quickly, there are some traffic on going between the O.S. and the “USB Flash Disk” device. Don’t remove the “USB Flash Disk” at this moment. Otherwise, it will cause some damages to the data or even the “USB Flash Disk” device itself.

2.2.4 Use with a computer without the Bluetooth software

- The read/write operation of the Bluekite USB2.0 Pen Driver is still enabled if its Bluetooth radio is “switch-off”.
- You will encounter the *Found New Hardware Wizard* windows after you plugged the Bluekite USB2.0 Pen Driver in the computer if its Bluetooth radio switch is “switch-on”. You can either click “Cancel” button to ignore the request or switch off the Bluetooth radio to continue using the USB2.0 Pen Driver. If you want to enable its Bluetooth functions for the



Figure 2.2.4.1 - Found New Hardware Wizard window

BLUEKITE USB2.0 Pen Drive – User Guide

computer, please refer to the next section to install the Bluetooth software.

2.3 Install mySecurity 2.5 Lite software

Bluekite USB2.0 Pen Drive bundled with a file encryption software “mySecurity 2.5 Lite”.

mySecurity file encryption manger offers tight and effective file protection and e-mail encryption. With the file digital disguise, you may convert any Word file into a BMP file; and the support of ZIP and various compression formats allows you to enjoy safe and free communication over the Internet. If you want to have more advanced functions, you may choose to purchase the advanced version “mySecurity 2.5 Professional”.

Table-1: Function List of mySecurity 2.5 Lite and mySecurity 2.5 Professional

Functions	mySecurity 2.5 Lite	mySecurity 2.5 Professional
eLogon Function		■
Password Encrypt Function	■	■
PKI Encrypt Function		■
Certificate Management		■
Disguise Function	■	■
Self-Extract Function	■	■
A/B Key Encrypt Function		■
Zip Compress Function	■	■
ZIP/TAR/RAR/ARJ Decompress Function	■	■
Explorer Function	■	■
E-Mail Function	■	■
Multiple Cryptography	■	■

More information of mySecurity 2.5 Professional, please visit http://www.ecosine.com.tw/English/Product/pro_mysecurity.htm

please insert the *Utility CD* into the CD-ROM drive. After the CD menu launched, please select your language and then press on “Extra

BLUEKITE USB2.0 Pen Drive – User Guide

Application” button. Afterward you will see the following page, please press on “Install mySecurity 2.5 Lite” button.

The process of mySecurity 2.5 Lite installation is shown as below:



Figure 2.5.1- mySecurity 2.5 Lite installation button

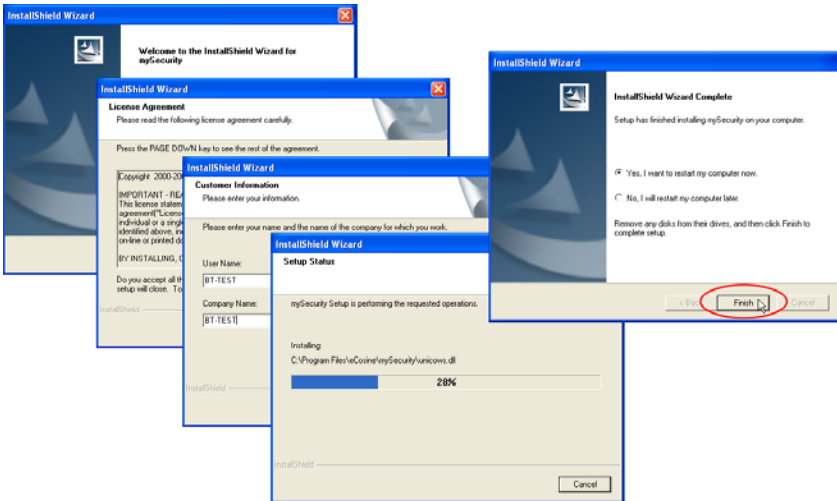
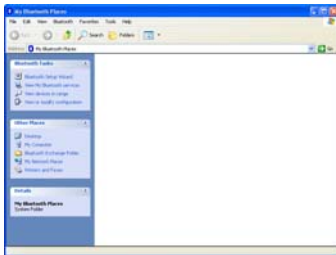


Figure 2.5.2- mySecurity 2.5 Lite installation process

Note. The complete user guide of mySecurity 2.5 Lite is included in the *Utility CD*.

3. Bluetooth Software Installation

Through simplified installation of the Bluetooth software, you can now easily establish wireless communication among all Bluetooth-enabled devices. In the My Bluetooth Places window as figure 3.1.2, you can clearly see all Bluetooth devices around you and easily gain further diverse functions with them. Furthermore, you can get rid of those awkward cables from now on.

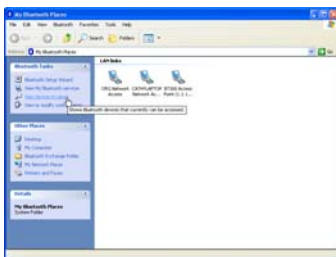


Windows XP

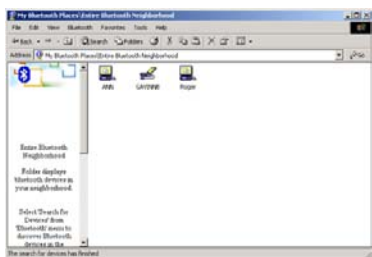


Windows 2000/ME/98SE

Figure 3.1.1 - My Bluetooth Places window (original status)



Windows XP



Windows 2000/ME/98SE

Figure 3.1.2 - My Bluetooth Places window (found other bluetooth devices)

Note: Please close other running applications before installing Bluetooth software.

3.1 System Requirements

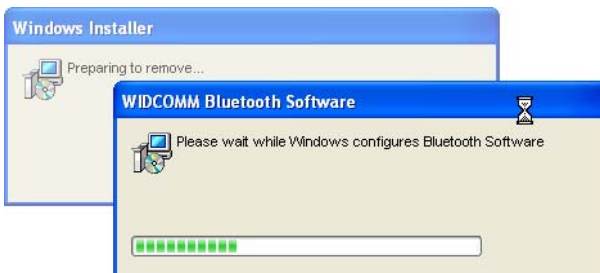
It is necessary to install corresponding application software before starting to use the Bluekite USB2.0 Pen Drive. Therefore, please check your system in advance and ensure it meets in the minimum requirements as described below.

- Processor: Intel Celeron/Pentium III/Pentium 4; AMD Duron/Athlon or the higher class CPU
- Operating System: Windows XP/2000/ ME/98SE, Mac OS X 10.2.6 or the later version
- System memory: 32MB at least
- Hard Drive Free Space: 18MB

3.2 Before Installing

To prevent potential problem during installing the software, please do not plug in any Bluetooth Device (i.e. Bluekite USB Pen Drive) into the computer until the software installation is finished.

Once you load the Widcomm Bluetooth Software, the software automatically removes any previous versions of Bluetooth software on your computer.



To manually remove any previous Widcomm Bluetooth software version that exists on your system, the remove procedure is as follows:

1. Click "Start/Settings", then select "Control Panel".

2. In the *Control Panel* window, double click “Add/Remove” programs icon.
3. Find out the item “Widcomm Bluetooth Software x.x.x” and then remove it by clicking the “Remove” button.

BLUEKITE USB2.0 Pen Drive – User Guide

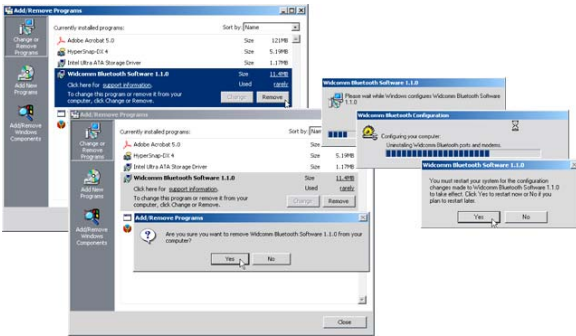


Figure 3.2 - Removing Widcomm Bluetooth software previous version

3.3 Install Widcomm Bluetooth software under Windows 2000/ME/98SE

Insert the *Utility CD* into CD-ROM drive. If the Auto-Run function of CD-ROM is enabled (in Windows, the default setting of this function is usually enabled), then a CD menu will appear automatically. If not, you can still utilize the Windows Explorer to browse CD content and run “Setup.exe” manually. Please select your language and then click “Install Bluetooth Software to continue”.



Figure 3.3.1 - CD menu

To ensure that the next window appears, please click the “Next” button to continue the software installation. In *Device Information* window, check the item “I accept the terms in the license agreement” and click the “Next” button to continue.

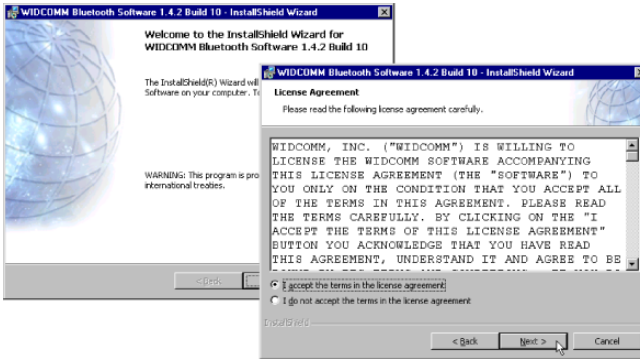


Figure 3.3.2 - License Agreement window

The software default destination folder is located in C:\ Program Files \ Widcomm \ Bluetooth Software\.. If you want to change the folder, click “Change...” button then select one. If everything is ready and done, please click “Next” button to begin the installation.

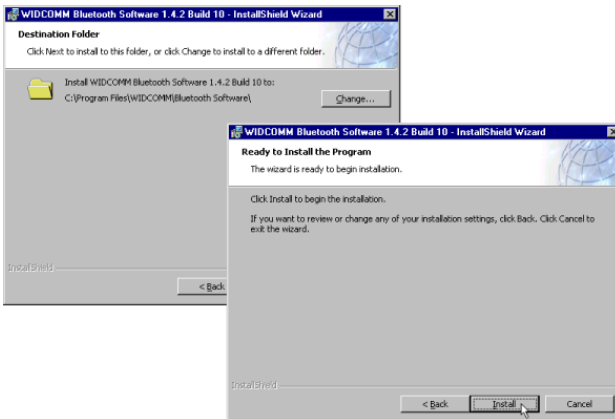


Figure 3.3.3 - Destination folder select

The software installation is now processing.

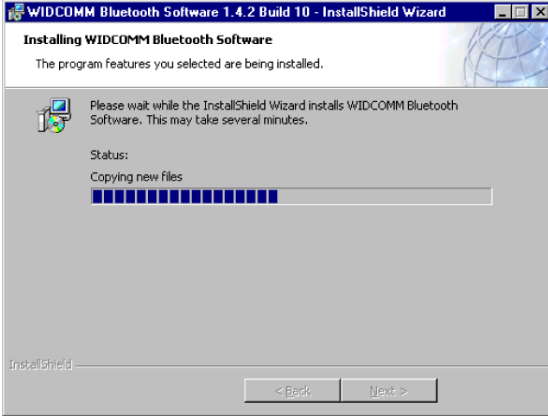


Figure 3.3.4 - Installation is running

The InstallShield Wizard will prompt to ask if you have plugged in any Bluetooth device, please click “Cancel” to continue. We strongly recommend plugging Bluetooth device after the completion of the software installation.



Figure 3.3.5 - Installing Bluetooth Software.

Please reboot your system after the software installation is finished.



Figure 3.3.6 - Installation finished window

There are two new Bluetooth icons appear on the desktop and the toolbar respectively when logged in Windows operating system. For more information on the BTW Console, please refer to Chapter 4.

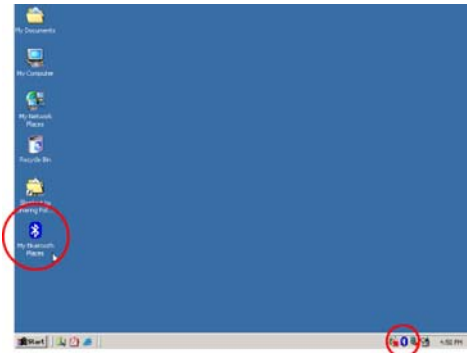


Figure 3.3.7 - Bluetooth software icons

Now you are ready to plug in your Bluetooth device.

3.4 Install Widcomm Bluetooth software under Windows XP

1. Insert the *Utility CD* into CD-ROM drive. If the Auto-Run function of CD-ROM is enabled (in Windows, the default setting of this function is usually enabled), then a CD menu will appear automatically. If not, you can still utilize the Windows Explorer to browse CD content and run “Setup.exe” manually. Please select your language and then click “Install Bluetooth Software” to continue.



Figure 3.4.1 - CD menu

2. To ensure that the next window appears, please click “Next” button to continue the software installation. In *License Agreement* window, check the item “I accept the terms in the license agreement” and click “Next” button to continue.

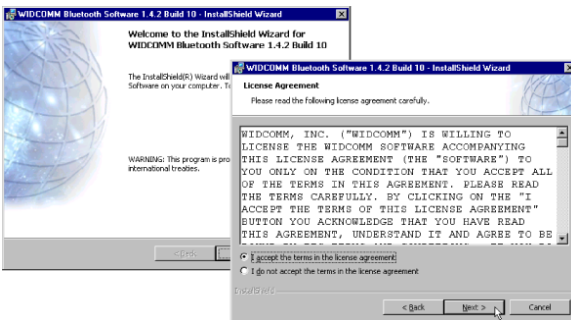


Figure 3.4.2 - License Agreement window

BLUEKITE USB2.0 Pen Drive – User Guide

3. Indicate the location of where you want Bluetooth Software to be stored; if you do not change the default settings, it will be stored under C:\Program Files\WIDDCOM\Bluetooth Software\.. (this is location is recommended). Click on “Next” to continue.
4. Now click on Install to install the software to the location as appeared on screen. Then click “OK” on the ”Driver Signature” window.

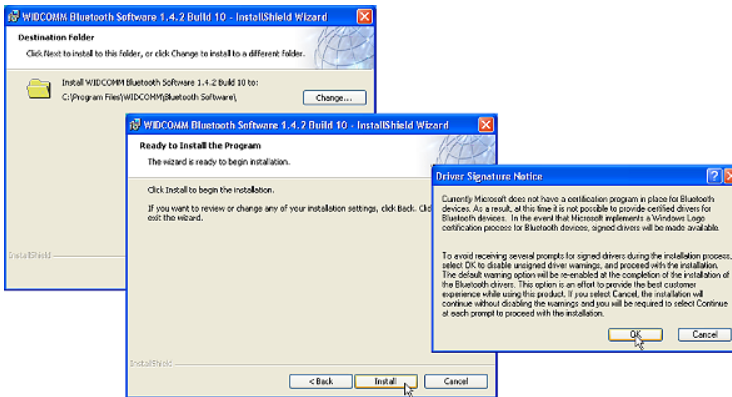


Figure 3.4.3 Installation Location.

5. The software installation is processing now. When prompted for bluetooth hardware installation click “Cancel” to continue. It is recommended to finish installing your software before plugging in any Bluetooth device.

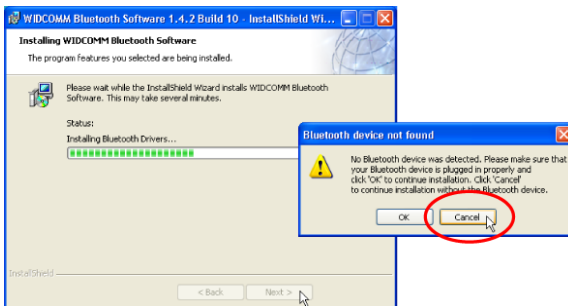


Figure 3.4.4 - Installation is running

6. Click “Finish” button to complete the installation. Now you are ready to install your hardware.

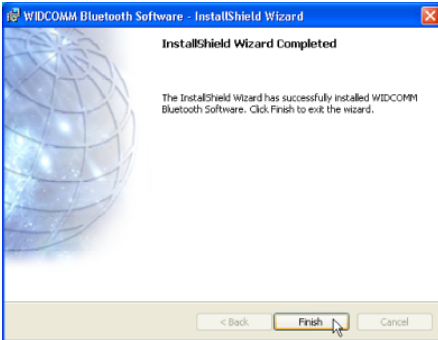


Figure 3.4.5 - Installation finished window

7. Now you can plug-in/install your USB Adapter into your computer.
8. As soon as hardware device is installed, Windows XP operating system will prompt the *Found New Hardware Wizard* window and detects a new device named “CSR USB Bluetooth device”.



Figure 3.4.6 - Found New Hardware Wizard window

9. Check "Install the software automatically (Recommended)" option and then click the “Next” button to continue.

- The wizard is automatically starts to search for the proper software for the Bluetooth device and copy files into Windows XP system.

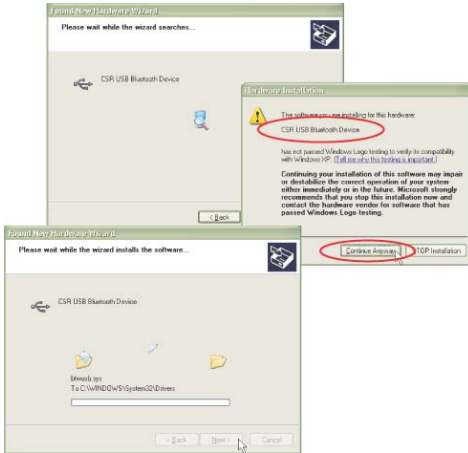


Figure 3.4.7 - Searching and installing software

- Press the “Finish” button to close *New Device Wizard* window after the installation. Afterward the message from taskbar in Windows XP informs you that the hardware is installed and ready to use.



Figure 3.4.8 - Complete the wizard

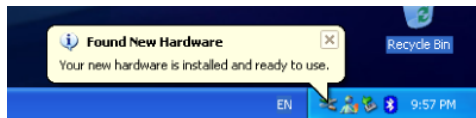


Figure 3.4.9 - Windows XP toolbar

- Please remove the Software CD after the installation is complete.

13. It is essential to setup Bluetooth Configuration in advance before using all Bluetooth services. Please double-click on *My Bluetooth Places* and then the *Bluetooth Configuration Wizard* will automatically pop-up. Please press “Next” button to continue.

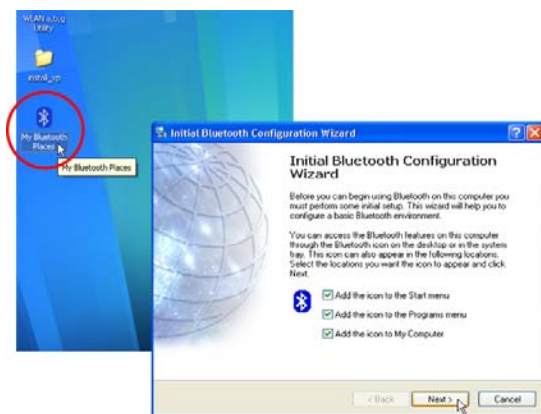


Figure 3.4.10 - Initial Bluetooth Configuration Wizard

14. **Computer Name:** Enter a name for your computer in order to be recognized easily in Bluetooth environment.
Computer Type: Choose a particular type according to your computer. Please click Next button when “Computer Name” and “Computer” Type are selected.

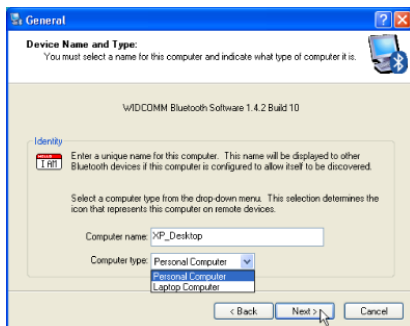


Figure 3.4.11 - Device Name and Type Configuration

15. In the *Bluetooth Service Selection* window, all Bluetooth services that can be used on your computer will be checked in advanced by the wizard, please don't change any default setting and click "Next" button to continue.

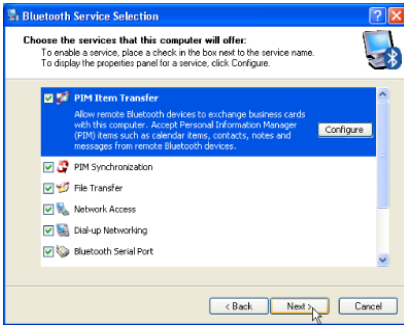


Figure 3.4.12 Bluetooth Service Selection window

16. The *Bluetooth Configuration Wizard* will occupy several minutes to update every Bluetooth service's configuration.

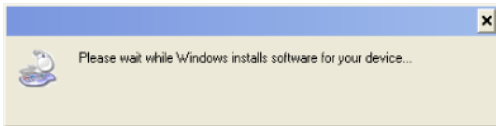


Figure 3.4.13 Updating Bluetooth Service Configuration window for example

17. Please click "Skip" button and then click "Finish" button to complete the *Bluetooth Configuration Wizard*.

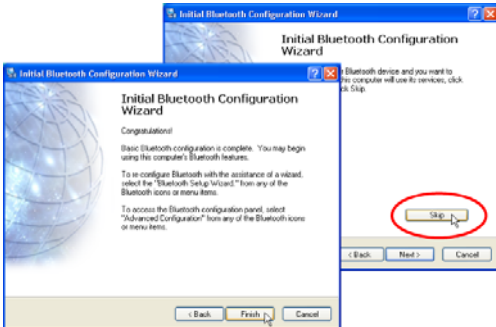


Figure 3.4.14 Complete the Bluetooth Configuration Wizard

3.5 Install WinRoute Lite software

Under Windows 98SE or Windows ME environment, it is indispensable to use WinRoute Lite software to act as a router. Bluekite offers a 30-day trial version of WinRoute Lite software, you can find and install it from Bluetooth Software CD. In addition, you can also purchase a formal version of WinRoute Lite from website at <http://www.kerio.com>



Figure 3.5.1 – WinRoute Lite installation button

Please insert the *Utility CD* into the CD-ROM drive. After the CD menu launched, please select your language and then press on “Extra Application” button. Afterward you will see the following page, please press on “Install WinRoute Lite” button. The process of WinRoute Lite installation is shown as below:

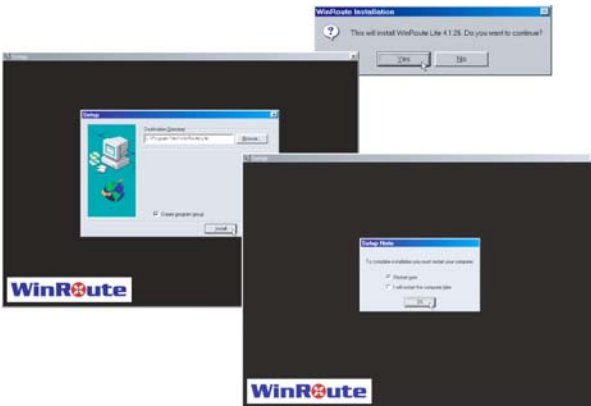


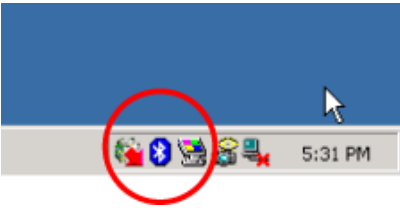
Figure 3.5.2 - WinRoute Lite installation process

Note. The complete user guide of WinRoute Lite is included in the *Utility CD*.

4. BTW Console

After BTW installed in your system, a shortcut called Bluetooth System Tray(BTTray) function will automatically execute whenever system starts and show it's icon on the Windows toolbar. The BTTray provides several practical functions:

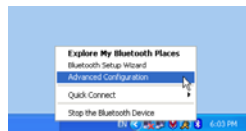
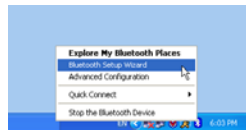
- Unobtrusive notification when intervention is required to authorize a security request or enter a Bluetooth passkey.
- Dialog boxes that prompt for security authorization and allow passkey entry.
- Bluetooth "pairing" support.
- Access to the *Bluetooth Configuration* window.



Bluetooth Console icon on toolbar

The BTTray provides several practical functions:

1. Explore My Bluetooth Places: opens *My Bluetooth Places* window.
2. Bluetooth Setup Wizard: opens up the *Bluetooth Setup Wizard*.
3. Advanced Configuration: opens up the *Bluetooth Configuration* menu.
4. Quick Connect: Selects others Bluetooth service directly and swiftly.
5. Stop the Bluetooth Device: disconnects your Bluetooth device.




































Icons Used for Bluetooth Devices and Services

Bluetooth icons provide at-a-glance feedback about a device or service's status by changing appearance.

The Bluetooth icon in the Windows system tray provides feedback about Bluetooth status.
















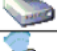

















Bluetooth Icon Indicates Bluetooth Status		
Enabled	Disabled	Connected
		
Blue with White	Blue with Red	Blue with Green

Bluetooth Icon on BTTray to provide Bluetooth Status

Device Icons for Windows 9x, Me and 2K			
Name	Normal	Connected	Paired
Audio Gateway			
Desktop			
Headset			
Human Interface Device			
Laptop			
Modem			
Network Access Point			
Personal Digital Assistant			
Printer			
Telephone			
Unknown			

Service Icons for Windows 2000/ME/98SE

BLUEKITE USB2.0 Pen Drive – User Guide

Device Icons for Windows XP			
Name	Normal	Connected	Paired
Audio Gateway			
Desktop			
Headset			
Human Interface Device			
Laptop			
Modem			
Network Access Point			
Personal Digital Assistant			
Printer			
Telephone			
Unknown Device			

Device Icons for Windows XP

4.1 Bluetooth Security Settings

After installation of your Bluetooth Software, the default security settings are set to “Secure”. In *Secure* setting the system will prompt for passkey confirmation every time a Bluetooth device is attempting to connect to your system. To ensure that your software works easily with your system for initial set up, it is best to switch the setting to unsecured.

4.1.1 Local Service Tab

To turn off your *Secure* setting, go to your *BTW Console* located on the bottom right hand corner of your Windows Toolbar. Right click and choose the “Advance Configurations” option. Once the *Configuration Window* opens, choose the “Local Services” tab key.

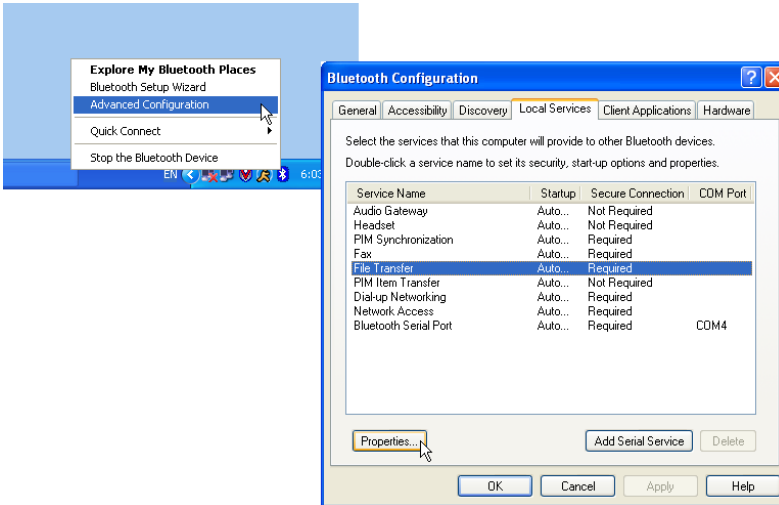


Figure 4.1.1.1 Local Services Window to change security settings.

Right click on the service you would like to set unsecured. For example, right click on *File Transfer* option, once the *File Transfer properties* window opens, uncheck the *secure connection* option. Now you are allowing file transfer to other computers without secure passkey.

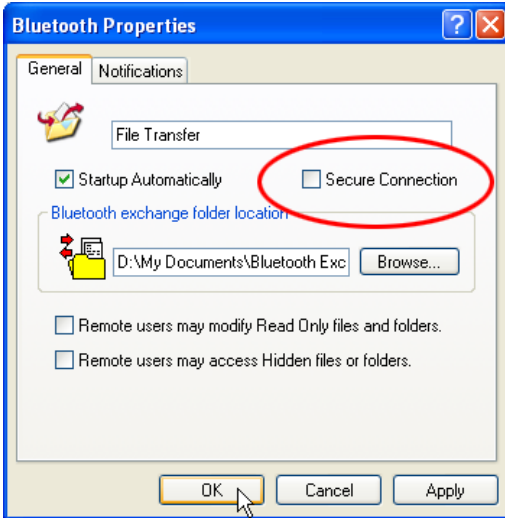


Figure 4.1.1.2 Properties window for File Transfer.

Note: Once you have unchecked the secure connection option, all Bluetooth devices are allow to connect to your system and use your services.

4.1.2 Client Application Tab

Once you have turned off the secure setting in the *Local Services* window you must also turn it off in the *Client Application* tab. The secure setting in the *Client Application* window prompts for passkey code every time you attempt to connect to other computer or devices even if no security setting is set on the remote computer. Thus, to ensure proper function it is best to turn off the security setting on *Client Application*.

First, select the *Client Application* tab. Then, right click on the service you would like to turn off your security settings. In this case, *File Transfer*. Now, uncheck “secure connection” on the window. Then click “OK”.

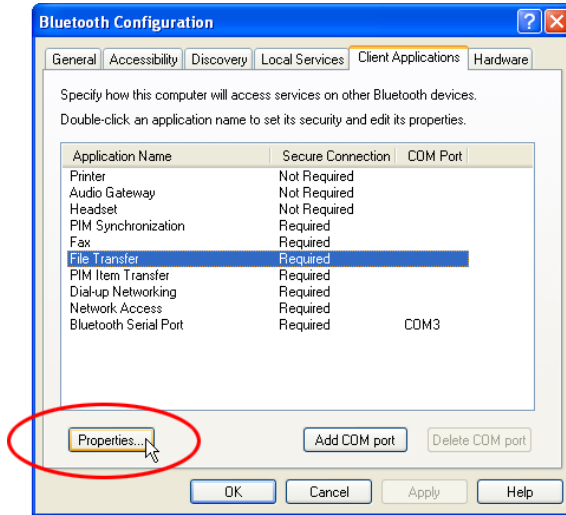


Figure 4.1.2.1 Client Application Window.

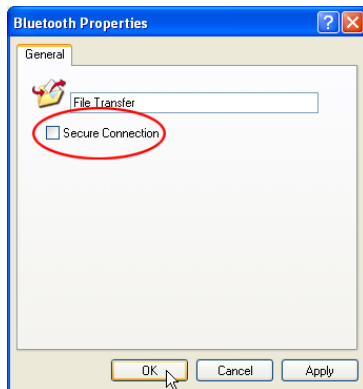


Figure 4.1.2.2 Client Application Properties window.

4.2 Bluetooth Configuration

The Bluetooth Configuration window divides into six tabs:

General

- Identifies the computer name and computer type; desktop or laptop.

Accessibility

- Determines which individual Bluetooth-enabled devices are allowed to access to this computer.

Discovery

- Perform a periodic search for Bluetooth devices. The filters which specify devices or classes and types within class of devices are discovered.

Local Services

- Configures the properties of the local services. Properties include Authorization, Authentication, Startup, Encryption, COM port, and Modem type.

Client Applications

- Configures the properties of the client applications that your computer will use to access Bluetooth services on a remote device. Properties include Authentication, Encryption, add COM port, and select COM port for Bluetooth Serial port.

Hardware

- Shows the hardware information.

4.2.1 General Tab

In the Identity section, you can give a unique name for this computer in *Computer Name* column to be identified by other Bluetooth-enabled devices in Bluetooth Neighborhood. A valid computer name is between 1 to 247 characters.

As to the *Computer Type* column, there are *Desktop* and *Laptop* options depends on the computer type you are using.

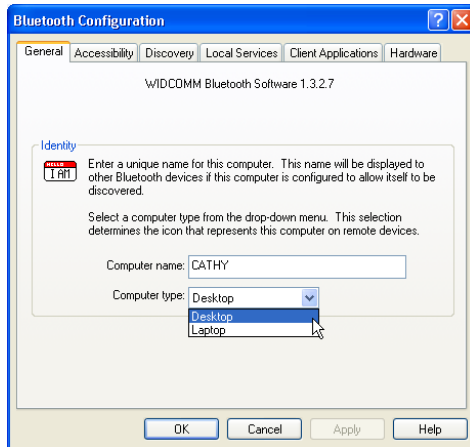


Figure 4.2.1.1 - General Tab

4.2.2 Accessibility Tab

The Accessibility tab includes several options:

- *Let other Bluetooth devices discover this computer*

The default is allowed remote devices to discover this computer. Note: this function is ineligible when “No devices to connect” option is selected in *Allow* option.

- *Allow*

This option has four configurations to select:

All devices to connect

Default setting. Let other devices discover this computer without any restrictions.

No devices to connect

This computer can still require a connection to a remote device, but a remote device won't be able to connect to this computer or use all services.

Only paired devices to connect

Only the devices that have been paired are authorized to connect to this computer.

Only devices listed below to connect

Only the devices that have been added in *Add Device* box are authorized to connect to this computer.

- *Select an audio notification when pin code is requested.*

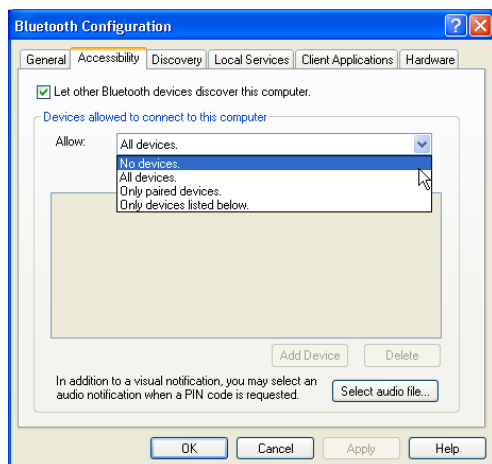


Figure 4.2.2.1 - Accessibility Tab

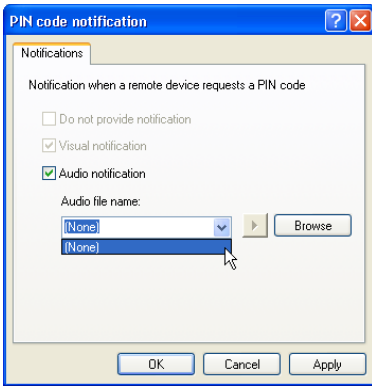


Figure 4.2.2.2 - Accessibility Tab

4.2.3 Discovery Tab

4.2.3.1 Periodic search for devices

The first option in *Discovery* tab allows this computer to perform periodic search for remote devices in the background. To make continuous periodic device searches:

1. Check the box labeled “Look for other Bluetooth devices”.
2. Enter a number between 1 and 60 to set the period of time in the “Every minutes” box.
3. Press “OK” button to confirm the change.

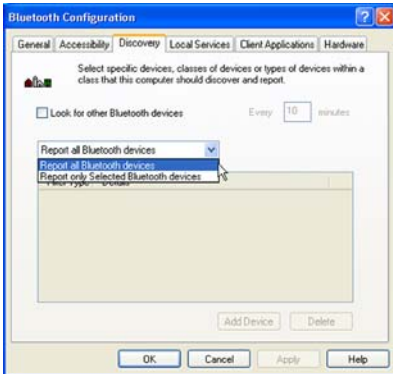


Figure 4.2.3.1 - Discovery Tab

4.2.3.2 Control device(s) display in Bluetooth Neighborhood

With the default option “Report all Bluetooth devices”, the *Bluetooth Neighborhood* window displays all the devices found by your computer.

4.2.3.3 Report only Selected Bluetooth devices

The configuration can also be changed by choosing “Report only Selected Bluetooth devices” option to control which devices are displayed by adding one or more filters to the *Discovery* tab.

When you choose “Report only Selected Bluetooth devices” option, you can add filter type by pressing “Add Device” button.

There are two options In the *Discoverable devices...* window:

1) *Allow this computer to discover specific devices.*

1. Make sure that the radio button labeled “Allow this computer to discover specific devices” is selected.
2. Select remote device(s) through the dialog box (to select more than one device, press the “Ctrl” or “Shift” keys while making the selections).
3. Click the dialog box “OK” button. Then selected devices will show in the filter list on the *Discovery* tab.
4. Press “OK” button to confirm the change.

2) *Allow this computer to discover specific classes or types of devices within a class.*

1. Make sure that radio button labeled “Allow this computer to discover specific classes or types of devices within a class” is selected.
2. Click the “down-arrow” located at the right side of the *Class* field and select a class from the list. All available classes and types are listed in Table-1.

Table-2: Class of Device and Type of Device

Class of Device	Type of Device
<i>Computer</i>	Desktop Workstation
	Server Class Computer
	Laptop
	Handheld PC/PDA
	Palm PC/PDA
	All
<i>Phone</i>	Cellular
	Cordless
	Smart Phone
	Wired Modem or Voice
	All
<i>LAN Access Point</i>	All
<i>Audio</i>	Headset
	All
<i>Peripheral</i>	All

3. Click the “down-arrow” located at the right side of the *Type* field and select a class from the list.
4. Press “OK” button. When go back to the *Discovery* Tab, there appears the selected device class and type in the filter list.
5. Press “OK” button to confirm the change.

Note: Remember to select “Report all Bluetooth devices” option when you delete all filters. Otherwise, an error message will display when you press “OK” button.

4.2.4 Local Service Tab

The Local Service tab is used for specifying the services that are provided to other Bluetooth-enabled devices. Each service can be configured respectively for name, security, and other settings. This tab also includes options to add and delete user-defined serial services.

4.2.5 Client Application Tab

Client applications are the local software that allows your computer to interact with other Bluetooth devices that provide a similar local service. For example, the Bluetooth Serial Port client application on your computer allows it to establish a virtual COM port with a remote device that provides the Bluetooth specification Serial Profile service. Besides provides a means to configure each client application respectively for name, security, and other settings, the Client Application tab also has options to add a user-defined COM port and/or delete applications.

The client applications share the same names as the local services, such as *Bluetooth Serial Port, Dial-Up Networking, Fax, File Transfer, Information Exchange, Information Synchronization, and Network Access.*

4.2.6 Hardware Tab

The Hardware tab shows the current properties of the Bluetooth device installed on your computer. You can also enter the Advanced Settings to change the Bluetooth device's hardware configuration such as Country Code and Maximum Transmission Power.

4.3 Bluetooth Setup Wizard

The Bluetooth Setup Wizard is a quick and easy wizard to help you find services on others' computer, find services on a specific computer, configure services to provide to remote clients, and change your name and device type.

4.3.1 Finding other services

Choose option one when you would like to search for services on other computers, such as network access, file transfer, etc...

To begin your search, go to your *BTW Console* located on the bottom right hand corner of your Windows Toolbar. Right click and choose the "Bluetooth Setup Wizard" Once the *Setup Wizard* windows open, choose option 1, then click "Next".



Figure 4.3.1 - Bluetooth Setup Wizard

For example, to establish a network access, choose the *Network Access* option. Then, the computer will search for network access availability from other computers.

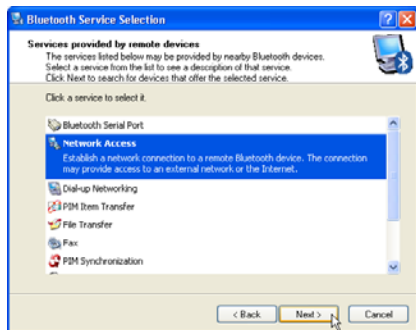


Figure 4.3.2 - Bluetooth Setup Wizard

BLUEKITE USB2.0 Pen Drive – User Guide

After, you must choose which computer you would like to access the network from.

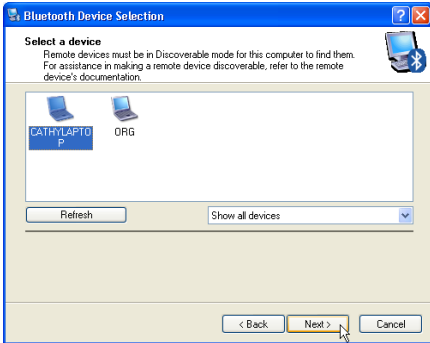


Figure 4.3.3 - Bluetooth Setup Wizard

Now the network access is established. You can also create a shortcut to this network access by clicking the box next the “Create shortcut...?” this way you can have access easily in the future.



Figure 4.3.4 - Bluetooth Setup Wizard

Note: It is suggested that user create shortcut for easy access. Creating a shortcut allows easy access to the Network without configuring it again.

4.3.2 Finding services on specific computers

Choose option two when you would like to search for services on a specific computer.

To begin to search for services on a particular computer, go to your *BTW Console* located on the bottom right hand corner of your Windows Toolbar. Right click and choose the “Bluetooth Setup Wizard”. Once the *Setup Wizard* windows open, choose option 2, then click “Next”.



Figure 4.3.5 - Bluetooth Setup Wizard

The *Setup Wizard* will first search for all devices or computers around you. Choose the specific computer you would like to find the service from. For example, to establish a network access to the client computer, first, choose the client computer you would like to access the network from it. Then click “Next”.

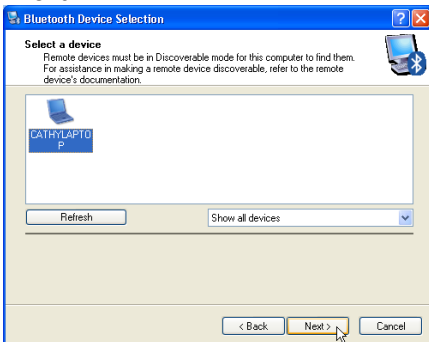


Figure 4.3.6 - Bluetooth Setup Wizard

Then, choose the service you like, in this case, *Network Access*. Then click “Finish”. Now network access is connected to the client computer.

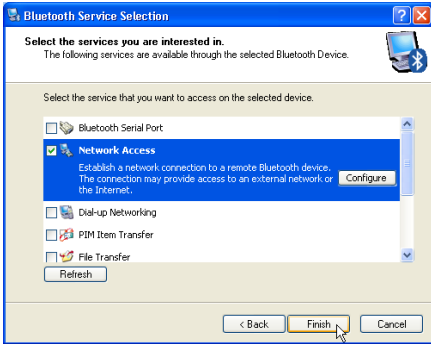


Figure 4.3.7 - Bluetooth Setup Wizard

Furthermore, a network access shortcut to the client computer is created in *My Bluetooth Places*.

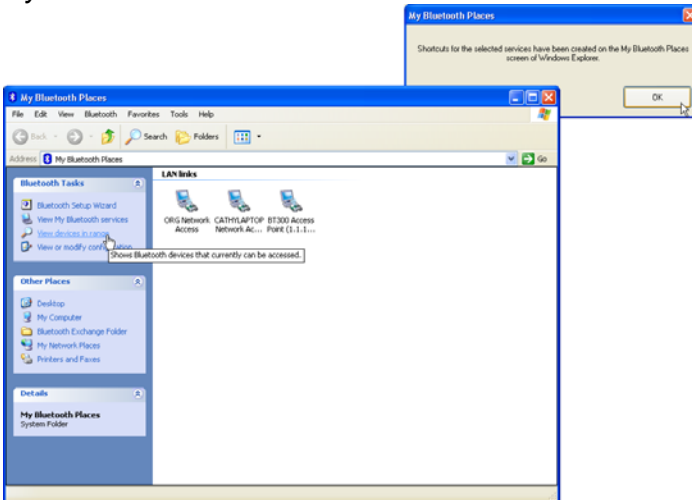


Figure 4.3.8 - Bluetooth Setup Wizard

4.3.3 Configuring services to provide to remote clients

Choose option 3 when you would like to configure your services on your computer.

To begin configuration, go to your *BTW Console* located on the bottom right hand corner of your Windows Toolbar. Right click and choose the “Bluetooth Setup Wizard” Once the *Setup Wizard* windows open, choose option 3, then click “Next”.



Figure 4.3.9 - Bluetooth Setup Wizard

The *Setup Wizard* will search for all services provided by your computer and list them. Choose the service you would like to configure. For example, by choosing “Configure your Network Access”, the *Properties* window for network access service will appear.

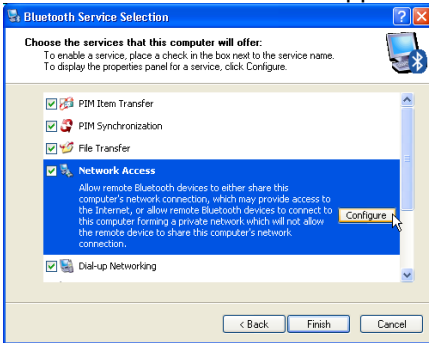


Figure 4.3.10 - Bluetooth Setup Wizard

By picking the option “allow other devices to access the Internet/LAN via this computer” you are providing network access to others through this computer.

All other configurations can be set by choosing the other services.

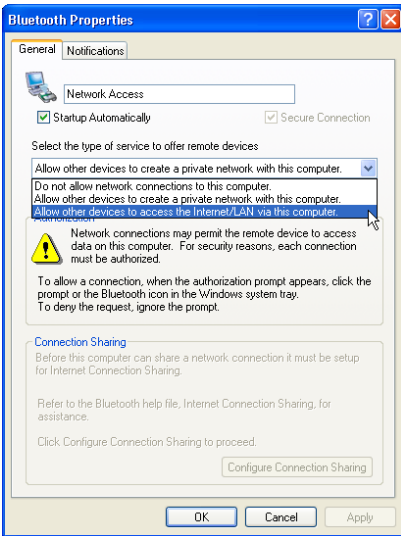


Figure 4.3.11 - Bluetooth Setup Wizard

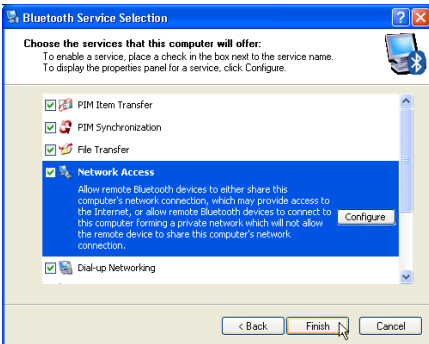


Figure 4.3.12 - Bluetooth Setup Wizard

4.3.4 Changing your name and device type

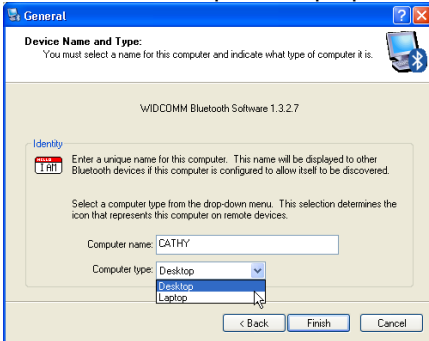
Option 4 allows you to change your name and device type this computer will display to others.

To begin, go to your *BTW Console* located on the bottom right hand corner of your Windows Toolbar. Right click and choose the “Bluetooth Setup Wizard” Once the *Setup Wizard* windows open, choose option 3, then click “Next”.



Figure 4.3.13 - Bluetooth Setup Wizard

You can type in the name you would like to call your computer and choose if this is a “Desktop” or “Laptop”.



6.

Figure 4.3.14 - Bluetooth Setup Wizard

5. Bluetooth Service Usage

Bluetooth for Windows (BTW) is the solution for the seamless integration of Bluetooth technology into personal computers.

Most Bluetooth-enabled devices have the capability to act as:

- A Bluetooth server: these devices provide one or more services, such as access to the Internet, to the other Bluetooth devices.
- A Bluetooth client: these devices use the service(s) provided by Bluetooth servers.

Bluetooth for Windows software provides:

- Clients

- 1) To locate other Bluetooth devices in the immediate vicinity (inquiry).
- 2) Discover the services that those devices offer(discovery).
- 3) Connect to, use, and disconnect from those devices.

- Servers

- 1) To include/exclude individual services in the list of services it provides to clients.

-Extensive security, including:

- 1) Authorization.
- 2) Authentication.
- 3) Encryption.

BTW software supports:

Windows XP/ Windows 2000/ Windows ME/ Windows 98SE

BTW functions the same, regardless of the supported version of Windows it is running on.

5.1 Local Device services

As figure 5.1.1 shows, double click on the “My Device” icon or “View My Bluetooth Services”(for Window XP) and then go into the sub-window as below:

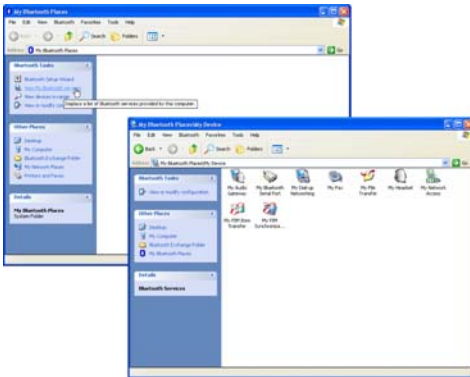


Figure 5.5.1 - My Device window

My Device window shows all local services that a Bluetooth server is capable of providing.

The services include:

- My Bluetooth Serial Port
- My Dial-Up Networking
- My Fax
- My Network Access
- My File Transfer
- My PIM Item Transfer (Personal Information Exchange)
- My PIM Synchronization (Personal Information Synchronization)
- My Audio Gateway
- My Headset

All services will automatically start when the Bluetooth software is initialized. Auto start-up can also be disabled for individual service (by using *Bluetooth Configuration Console/Local Services* tab, and double click on respective service to change start-up property).

To stop a service that is in action, just right-click on the icon of service, and choose stop from the pop-up menu. Not all services are available when you start, the device you are using must be enabled in order for proper usage.

Note: Those services that you stopped are unavailable for clients unless you restart them again.

Connections are usually established and disconnected by the client side. However, if necessary, you can also interrupt the connection from server side directly, or restart the service from stopped state.

In *My Device* window, right-click on the icon of service, and choose stop/start from the pop-up menu.

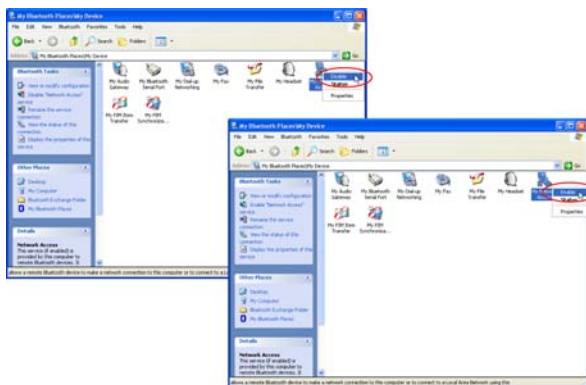


Figure 5.5.2 - Start/Stop service from pop-up menu

5.2 Bluetooth Neighborhood services



In the My Bluetooth Places window, you can click on “Entire Bluetooth Neighborhood” icon to make the Bluekite USB2.0 Pen Drive to look for other Bluetooth-enabled devices in the vicinity and display those devices it detected in the window. The list below shows the entire services that remote Bluetooth-enabled devices can provide:



- My Bluetooth Serial Port

Establishes a Bluetooth wireless connection between two devices. The connection may be used by applications as though a physical serial cable connected the devices.



- My Dial-Up Networking

Bluetooth client can dial-up to internet by using a modem that is physically connected to the Bluetooth server.



- My Fax

Bluetooth client can send a fax wirelessly by using a Fax machine that is physically connected to the Bluetooth server.



- My File Transfer

When File Transfer service is established between two Bluetooth-devices, you can easily browse, drag/drop, open, print, cut/copy, paste, delete, or rename files/folders in local device and remote device.



- My PIM Item Transfer (Information Exchange)

This service allows two Bluetooth-enabled devices exchange personal information manager data such as business cards, calendar items, email messages, and notes.



- My PIM Synchronization (Information Synchronization)

This service allows two Bluetooth-enabled devices to synchronize Personal Information Manager data each other.



- My Network Access

Establishes a wireless connection between the client and a server that is physically connected to the Local Area Network(LAN). If the client has permission from the server,

the wireless connection can be used as if the client were hardwired to the LAN.



My Audio Gateway

- My Audio Gateway

Allows the computer to use remote Bluetooth device microphone and speakers as this computer input and output devices. For example, if the computer has voice recognition capabilities, a Bluetooth headset might be used as the audio input device.



My Headset

- My Headset

Allows the computer to provide audio input/output for remote Bluetooth devices. For example, if the remote device is a Bluetooth telephone, this computer microphone and speakers can be used as speakerphone input and output for that device

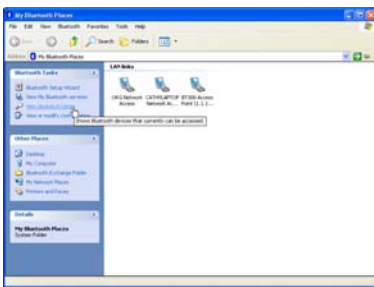
5.2.1 Bluetooth Serial Port

The Bluetooth Serial Port service allows two Bluetooth devices to establish a wireless connection through virtual communications ports and then use the connections as if it were a hardwired serial cable between the devices.

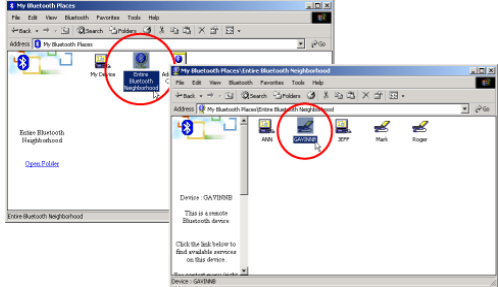
To establish a *Bluetooth Serial Port* connection between two devices, in *My Bluetooth Places* window on the client:

1. Select a specific device you want to establish a connection, and then double-click on it's icon. (If you don't see any devices in the *Entire Bluetooth Neighborhood* window, click mouse's right-button and then choose "Refresh" from the pop-up menu to look for Bluetooth-enabled devices) For Windows XP, click on "View Devices in Range".

BLUEKITE USB2.0 Pen Drive – User Guide



Windows XP



Windows 2000/ME/98SE

- Figure 5.2.1.1 - Select the specific remote Bluetooth-enabled device
2. When the services window of remote Bluetooth-enabled appears, double-click on *Bluetooth Serial Port* service icon.

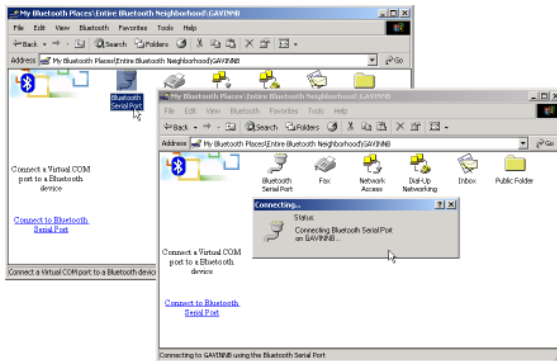


Figure 5.2.1.2 - Double-click the Bluetooth Serial Port service icon

3. The *Serial Port* service is in action when you see the icon color has changed from gray to green.

BLUEKITE USB2.0 Pen Drive – User Guide

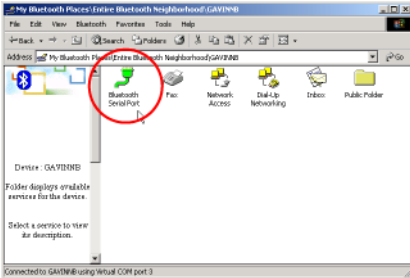


Figure 5.2.1.3 - Bluetooth Serial Port service is active

5.2.2 Dial-Up Networking

A local Bluetooth device can dial-up to internet by using a modem that is physically connected to a remote Bluetooth device through Dial-Up Networking service.

Possible Dial-Up Networking devices include:

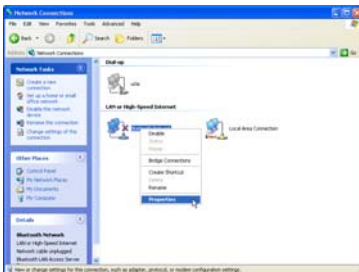
- Bluetooth-enabled computers with a modem connected.
- Bluetooth-enabled mobile telephone.
- Stand-alone Bluetooth-enabled modems.

After the Bluetooth wireless connection is established the client can use the remote device's modem as if it were a local device on the client.

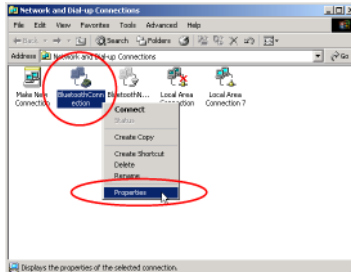
To establish a Dial-Up Networking connection, please follow the steps:

Part 1. Network setting

1. Select *Start --> Settings --> Control Panel --> Network and Dial-up Connections*
2. Right-click on the “Bluetooth Connection” icon in the Network and *Dial-up Connections* window as below, and then select the “Properties” in the pop-up menu.



Windows XP



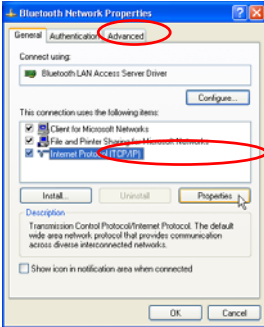
Windows 2000/ME/98SE

Figure 5.2.2.1 Select Bluetooth Connection icon

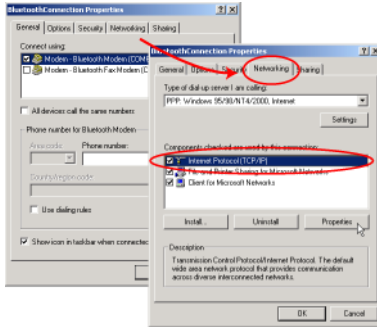
3. Switch to *Networking* tab from *Bluetooth Connection* window.
4. Select the item *Internet Protocol (TCP/IP)* from the list of Components

BLUEKITE USB2.0 Pen Drive – User Guide

checked are used by this connection, and then press the “Properties” button.



Windows XP



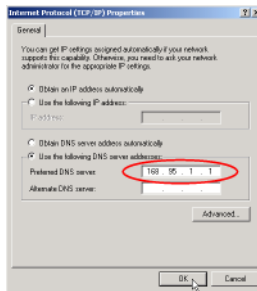
Windows 2000/ME/98SE

Figure 5.2.2.2 - Bluetooth Connection settings

5. In “General” tab of *Internet Protocol (TCP/IP) Properties*, make sure “Use the following DNS server addresses” item is checked, and input a DNS server address.
6. Press “OK” button to save the changes.



Windows XP



Windows 2000/ME/98SE

Figure 5.2.2.3 - Bluetooth Connection settings

Note: The DNS server address which you inputted must be a existing and active in internet. Otherwise, it may occur to get a null response from internet. If you encounter such a situation, we recommend changing another DNS server address.

This device complies with part 15 of the FCC rules. Operation

is subject to the following two conditions.

- 1) This device may not cause harmful interference.
- 2) This device must accept any interference received, including interference that may cause undesired operation.

Per FCC 15.21, you are cautioned that changes or modifications not expressly approved by the part responsible for compliance could void the user's authority to operate the equipment.

15.105 Federal Communications Commission (FCC) Requirements, Part 15

This equipment has been tested and found to comply with the limits for a class B digital device, pursuant to part 15 of the FCC Rules. These limits are designed to provide reasonable protection against harmful interference in a residential installation.

This equipment generates, uses and can radiate radio frequency energy and, if not installed and used in accordance with the instructions, may cause harmful interference to radio communications. However, there is no guarantee that interference will not occur in a particular installation. If this equipment does cause harmful interference to radio or television reception, which can be determined by turning the equipment off and on, the user is encouraged to try to correct the interference by one or more of the

following measures:

- Reorient or relocate the receiving antenna.**
- Increase the separation between the equipment and receiver.**
- Connect the equipment into an outlet on a circuit different from that to which the receiver is connected.**
- Consult the dealer or an experienced radio/TV technician for help.**

Installation and use of this Bluetooth USB2.0 Pen Drive must be in strict accordance with the instructions included in the user documentation provided with the product. Any changes or modifications (including the antennas) made to this device that are not expressly approved by the manufacturer may void the user's authority to operate the equipment. The manufacturer is not responsible for any radio or television interference caused by unauthorized modification of this device, or the substitution of the connecting cables and equipment other than manufacturer specified. It is the responsibility of the user to correct any interference caused by such unauthorized modification, substitution or attachment. Manufacturer and its authorized resellers or distributors will assume no liability for any damage or violation of government regulations arising from failing to comply with these guidelines.

FCC RF Radiation Exposure Statement: This equipment complies with FCC RF radiation exposure limits set forth for an uncontrolled environment. This device and its antenna must not be co-located or operating in conjunction with any other antenna or transmitter.