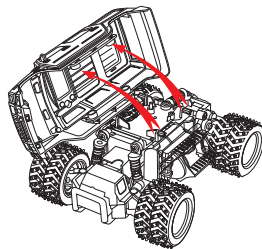
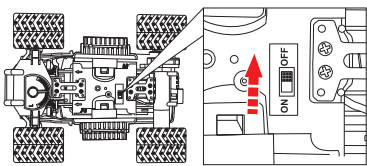
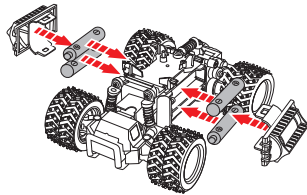
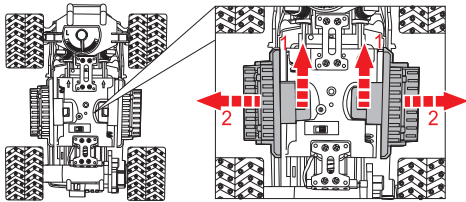


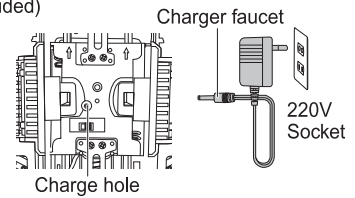
1. Turn the power switch under the car to "OFF". 2. As shown in diagram, open the bodyshell.



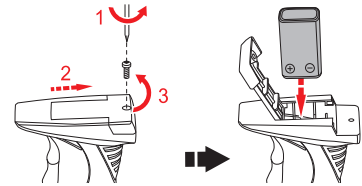
3. Install the battery, remove the battery cover should be as shown in diagram sequence. Install 4 X "AA" batteries with the correct polarity, then close the battery cover and the bodyshell.



4. Close the power, insert the charger faucet into the charge hole of under the car, in this way, the rechargeable batteries of car can charge. (The rechargeable batteries and charger not included)



5. Loosen the screw by screwdriver, open the battery cover as shown in diagram. Install one 9 size battery with the correct polarity. Then close the battery cover and fasten screw.



Changes or modifications not expressly approved by the party responsible for compliance could void the user's authority to operate the equipment.

BATTERY WARNING:

- Do NOT mix alkaline, standard (carbon zinc), rechargeable (nickel hydride) batteries.
- Do NOT mix old and new batteries.
- Non-rechargeable batteries are not to be recharged.
- Rechargeable batteries are to be removed from the appliance before being charged.
- Rechargeable batteries are only to be charged under adult supervision.
- Exhausted batteries are to be removed.
- The supply terminals are NOT to be short-circuited.
- Only batteries of the same or equivalent type are recommended to be used.
- Batteries are to be inserted with the correct polarity.

KEEP THIS PACKAGE FOR REFERENCE SINCE IT CONTAINS IMPORTANT INFORMATION