

Asiatelco Technologies Co.

AGP-V800R GSM Fixed Wireless Phone

User Manual

Index

1	GENERAL INTRODUCTION	1
2	IMPORTANT INFORMATION	2
3	PRODUCT OVERVIEW	3
3.1	PACKING LIST	3
3.2	PRODUCT INTRODUCTION	3
3.2.1	<i>Appearance</i>	3
3.2.2	<i>Key Definition</i>	4
3.2.3	<i>Display Icon</i>	5
4	BASIC OPERATIONS	5
4.1	POWER ON/OFF	5
4.2	MAKE A CALL.....	5
4.3	ANSWER A CALL.....	5
4.4	END A CALL.....	5
5	MAIN MENU	6
6	CONTACTS	6
6.1	SEARCH FOR A CONTACT	6
6.2	ADD A NEW CONTACT	7
6.2.1	<i>Add a New Contact from the Menu</i>	7
6.2.2	<i>Add a New Contact in Standby Mode</i>	7
6.3	VIEW A CONTACT	7
6.4	DELETE A CONTACT.....	7
6.5	EDIT A CONTACT	7
6.6	GROUP	7
6.6.1	<i>Add a Contact to the Group</i>	7
6.6.2	<i>Delete a Contact from the Group</i>	7
6.6.3	<i>Rename a Group</i>	8
6.6.4	<i>Set a Ring tone to a Group</i>	8
7	MESSAGES	8
7.1	SEND A MESSAGE	8
7.2	RECEIVE A MESSAGE	8
7.3	VIEW SENT MESSAGES	8
7.4	SEND A MESSAGE BY USING TEMPLATES	9
7.5	MESSAGE SETTINGS.....	9
7.6	VOICE MESSAGE AND BROADCAST MESSAGE	9
8	RECENT CALLS	9
8.1	MISSED CALLS	9
8.2	DIALED CALLS	9
8.3	RECEIVED CALLS	9
8.4	ERASE LISTS	9
8.5	CALL DURATION.....	9
9	SETTINGS	9
9.1	SET TIME AND DATE	9
9.2	SET LANGUAGE	10
9.3	SET PREFERRED INPUT METHODS	10
9.4	SET LCD CONTRAST.....	10
9.5	SET LCD BACKLIGHT	10
9.6	SET DIAL DELAY	10
9.7	SPEED DIAL	10
9.8	NETWORK SETUP	10
9.9	SECURITY SETUP.....	10
9.9.1	<i>SIM Lock</i>	10
9.9.2	<i>Phone Lock</i>	10

We offer . . . We deliver . . .

9.9.3	Auto Keypad Lock.....	11
9.9.4	Fixed Dial.....	11
9.9.5	Barred Dial.....	11
9.9.6	Change Password.....	11
9.10	SET ALARM.....	11
9.11	RESTORE FACTORY SETTINGS.....	11
10	SOUND	11
10.1	RINGER	11
10.2	VOLUME	11
10.3	RING TYPE.....	11
10.4	ALERT.....	11
11	CALL SERVICES	12
11.1	CALLER ID.....	12
11.2	CALL WAITING	12
11.3	CALL DIVERT.....	12
11.4	CALL BARRING	12
11.5	CALL TIME REMINDER.....	12
11.6	AUTO REDIAL	12
11.7	BLACK LIST	12

1 General Introduction

Thank you for choosing OneCentury G-series GE-01 GSM Desktop Phone. To use your phone well, please read this user manual carefully before you use.

The phone has been designed to operate with the latest digital communication technology - GSM. The phone provides the following advanced features:

- ✧ Large LCD with backlight, easy to read
- ✧ Status Indicators
- ✧ Two-way SMS, voice mail and caller ID
- ✧ Call Forwarding, Call Waiting, Three-Way Calling
- ✧ Emergency call
- ✧ Menu driven interface for easy operation and configuration
- ✧ Store 500 contacts
- ✧ Save 500 SMS
- ✧ Last call redials
- ✧ Choice of 22 ring tones and power On/Off music
- ✧ Adjustable ring and voice volume
- ✧ AC power supply
- ✧ Indoor antenna
- ✧ Speaker phone for hand-free operation
- ✧ User friendly keypad
- ✧ Long battery stand-by and talk time
- ✧ Easy to service and repair
- ✧ GPRS

We offer . . . We deliver . . .

2 Important Information

- ✧ The product can only be installed indoors.
- ✧ Do not place the phone near high temperature objects, under direct sunlight, near source of water, near fire or near inflammable and explosive materials. Avoid using the phone in high temperature or humidity.
- ✧ The phone may interfere with heart pacemaker, hearing aid and other electronic medical devices. Therefore please follow the instructions given by your equipment suppliers or consult your doctor. Turn your phone OFF in health care centers if any regulations posted in the area instruct you to do so. Hospitals or health care centers may be using equipment that may be sensitive to external RF energy.
- ✧ Place the phone away from other electronic devices like TV and Radio to avoid interference.
- ✧ Keep the product away from magnetic field and static electricity.
- ✧ Place the phone out of the reach of small children.
- ✧ Do not attempt to reassemble the phone by yourself. Only authorized personnel could service the phone and its accessories. Faulty installation or service can be dangerous and may invalidate the warranty.
- ✧ Do not clean the phone while in operation. Before attempting to clean the phone, turn the phone off, disconnect the external power adapter and take out the battery. Use a dry, soft cloth for cleaning. Do not use liquid or aerosol cleaners.
- ✧ Do not drop, knock or shake the phone. Rough handling may break the phone body and internal circuit boards.
- ✧ Do not use the phone if the antenna is damaged. Replace the damaged antenna immediately by a qualified technician. Use only a manufacturer approved antenna. Non-approved antennas, modifications or attachments may impair call quality and damage the phone.
- ✧ Do not hold the antenna during operation. This may affect call quality and cause the phone to operate at unintended power levels.
- ✧ Keep the antenna free from obstructions and position the antenna straight up. This will ensure best call quality.
- ✧ Only use the battery and the power adapter approved by the manufacturer. If not, it may cause an explosion or result in a short circuit.
- ✧ It is highly recommended to fully charge the battery before initial use. The battery might have been discharged during storage and delivery.
- ✧ Do not throw battery. Batteries are not to be disposed off by putting them in fire. It may explode or catch fire.
- ✧ The power adapter must be used within the specified AC voltage range.
- ✧ Take out the battery if you won't use your phone for a long time and keep the battery well.
- ✧ During lightning, do not touch the power plug. It may result in an electric shock or death.
- ✧ Do not touch the plug with wet hands. Always grasp and pull the plug, not the cord. Do not put heavy things on the power cord or bend it too much.
- ✧ During daily use, do not pull out the power adapter. The battery is used for backup power, which will not cause the increasing consumption of electricity. When power adaptor is not plugged in, device can be operated with battery only.
- ✧ Don't use the power adapter if the power cable is damaged. Contact the maintenance center immediately and replace the adapter.

3 Product Overview

3.1 Packing List

Once you open the product package, please check the packing list to make sure there is no part missing. If any part is missing or broken, please contact the customer service. The packing list is as follow:

No.	Name	Qty.	Remark
1	Phone Body	1	
2	Handset	1	
3	Antenna	1	
4	Ni-MH Rechargeable Battery	1	Bonding Battery 3pcs in 1pcs
5	User Manual	1	
6	Charger	1	

Table 1 Packing List

3.2 Product Introduction

3.2.1 Appearance



Figure 1 AGP-V800R GSM Fixed Wireless Phone Appearance

We offer . . . We deliver . . .
3.2.2 Key Definition

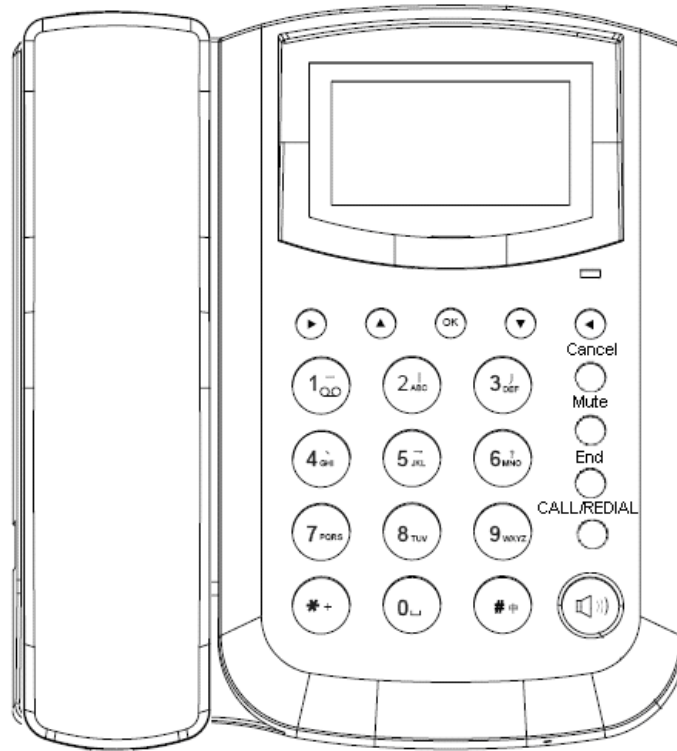




Figure 2 Key Layout

1	 Direction Keys	Move the cursor or scroll the menu.  also be Left Soft Key and Right Soft Key.
2	OK Key	Confirm your selection In Standby mode, press OK key to enter Dialed Calls
3	Cancel	Cancel your selection
4	END Key	Reject an incoming call, end a call, return to idle mode
5	MUTE Key	Switch to silent profile
6	CALL/REDIAL Key	Make or redial a call
7	SPEAKER Key	Hand free Key, active speaker phone mode
8	0~9 Alpha Numeric Keys and * # Key	To input numbers and characters, In text input mode, press 0 Key to input space

3.2.3 Display Icon

The following icon may appear on the display of the phone:




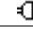
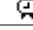
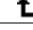


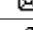
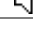
No.	Icon	Description
1		Current signal strength. The more bars there are, the stronger the signal is.
2		No signal.
3		Battery capacity indicator. The more bars there are, the more capacity the battery has.
4		Supplied by charger
5		Alarm on
6		Call forwarding
7		Phone lock
8		Missed call
9		Unread message
10		Speakerphone actives

Figure 3 Display Icon

4 Basic Operations

4.1 Power On/Off

Hook up handset to your phone and put the handset to hang up position, then connect DC power supply to the “DC IN” port at the rear of the phone or insert the battery to the battery chamber. Switch the “Power” switch (on the rear of the Phone) to ON, then press the Power On/Off Key on the panel for 3 seconds to power on the phone, your phone should go to idle screen and is ready to use.

You can turn the phone off directly by switching the “Power ON/OFF” switch (on the rear of the phone) to OFF position. If the phone will not be used for long time, please turn this switch to OFF. Or you can press the Power On/Off Key for 3 seconds to power off the Phone.

The phone can be operated without AC, this means it can work with battery only.

4.2 Make a Call

While your phone is power on and at idle screen, enter a destination number you wish to call and then press **SEND** Key. (Note: To modify digits you enter, you can press **BACK/CLR** Key to delete wrong digits first and then enter new digits). Once the call is connected, the phone’s screen will display the number you have dialed, and the time duration the call has lasted.

The phone also has a speaker. To use the speaker to make a call, press **SPEAKER** Key, enter a phone number, and press **SEND** Key.

The battery capacity of 1200 mAh is sufficient to place any calls without external AC/DC adaptor.

4.3 Answer a Call

When there is an incoming call, the phone will ring and display the Phone number of the incoming call (if the number is available). You can pick up the handset or press **SPEAKER** Key to answer the incoming call. The ring tone and ring-tone volume can be changed in the setting menu.

4.4 End a Call

You can end a call by pressing **END** Key. If you are using the handset for a phone call, hanging up the handset will end the call automatically.

5 Main Menu

Press L.KEY to enter the main menu from the idle screen. The main menu includes: Contacts, Messages, Recent Calls, Tools, and Settings. The menu tree is as follow:

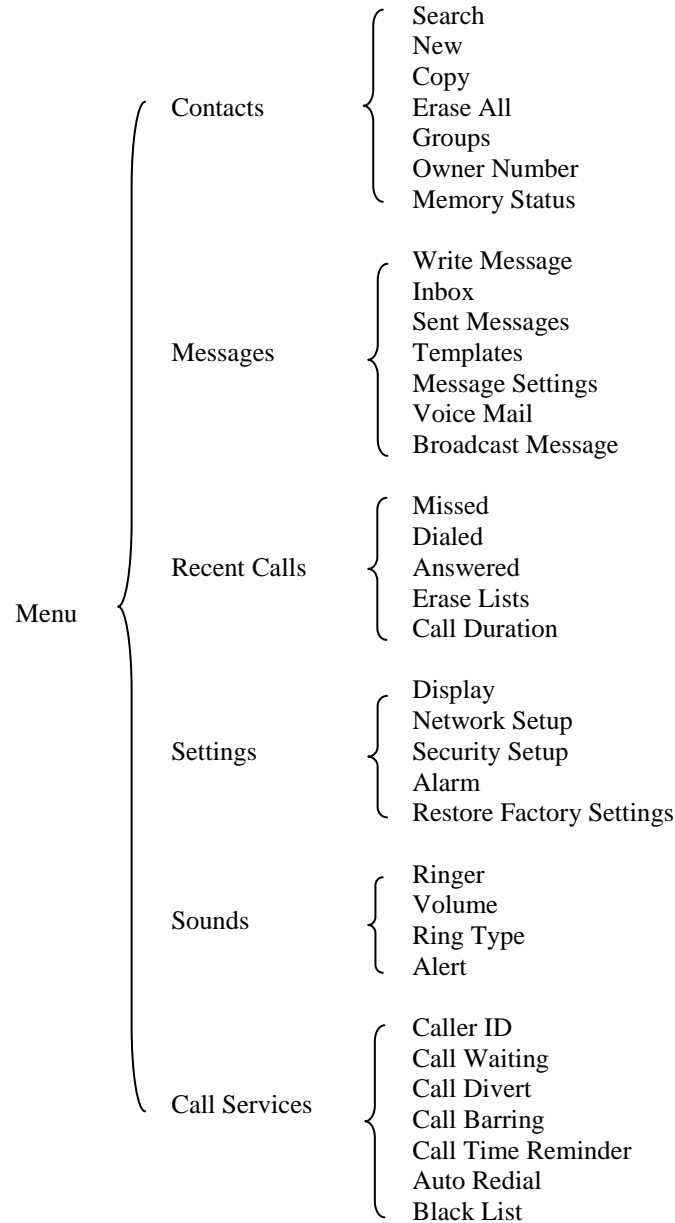


Figure 4 Menu Tree

6 Contacts

Contacts can be used to store contact's name and contact's phone numbers, home number, email address, office number and associate sound. You can store up to 500 entries to phone memory.

6.1 Search for a Contact

You can search a contact by name,

- 1) Select **Menu** → **Contacts** → **Search**,
- 2) Input the name for inquiry,
- 3) Press L.KEY to search or change input method, press **OK** to start search.

We offer . . . We deliver . . .

6.2 Add a New Contact

6.2.1 Add a New Contact from the Menu

- 1) Select **Menu** → **Contacts** → **New**, then you can choose the contact store to SIM or to Phone,
- 2) Scroll to Name, press L.KEY to input the name, and then press L.KEY → **Done**,
- 3) Scroll to Number, input the phone number, and then press L.KEY,
- 4) Scroll to the item you need to add to input or edit.
- 5) Then Press L.KEY to finish adding a contact, select **Yes** to save the contact.

6.2.2 Add a New Contact in Standby Mode

- 1) In idle mode, after inputting the phone number, press L.KEY to save the number directly.
- 2) Save the number to SIM card or to Phone.

6.3 View a Contact

There are 3 ways to view a contact.

- 1) Press R.KEY to view the contact list in idle mode, scroll to the desired contact, press L.KEY, scroll to **View**, and then press L.KEY to view the contact information;
- 2) Select **Menu** → **Contacts** → **Search**, input nothing, press **Select** → **Search** → **OK** to view the contact list. Scroll to the desired contact, press L.KEY, scroll to **View**, and then press L.KEY to view the contact information;
- 3) Select **Menu** → **Contacts** → **Groups**, select the group that desired contact belongs, scroll to **Member List**, then scroll to the desired contact, press L.KEY, scroll to View, and then press L.KEY to view the contact information.

6.4 Delete a Contact

- 1) Press L.KEY to view the contact list in idle mode, scroll to the desired contact, press L.KEY, scroll to **Delete**, and then press L.KEY,
- 2) You will be prompted “? Delete”, choose **Yes** to delete the contact.

6.5 Edit a Contact

- 1) Press L.KEY to view the contact list in idle mode, scroll to the desired contact, press L.KEY, scroll to **Edit**, and then press L.KEY,
- 2) Scroll to the item you need to edit, edit directly or press L.KEY to edit.

6.6 Group

6.6.1 Add a Contact to the Group

- 1) Select **Menu** → **Contacts** → **Groups**, scroll to the group that the desired contact belongs,
- 2) Scroll to **Member List**, press L.KEY to enter the Member List, press L.KEY,
- 3) Scroll to **Add**, press L.KEY, scroll to the desired contact, press L.KEY twice to add the contact to the group.

6.6.2 Delete a Contact from the Group

- 1) Select **Menu** → **Contacts** → **Groups**, scroll to the group that the desired contact belongs,
- 2) Scroll to **Member List**, press L.KEY to enter the Member List, press L.KEY,

We offer . . . We deliver . . .

- 3) Scroll to **Delete**, press L.KEY, scroll to the desired contact, and press L.KEY twice to delete the contact to the group.

6.6.3 Rename a Group

- 1) Select **Menu** → **Contacts** → **Groups**, scroll to the group you want to rename, press L.KEY,
- 2) Scroll to group name, press L.KEY, edit the group, press L.KEY twice to rename the group.

6.6.4 Set a Ring tone to a Group

- 1) Select **Menu** → **Contacts** → **Groups**, scroll to the group you want to rename, press L.KEY,
- 2) Scroll to 2, press L.KEY, set a ring tone to the group, press L.KEY to set the new ring tone.

7 Messages

You could compose a new message, view the inbox and outbox, perform SMS setting, voice mail and broadcast message.

In idle mode, you can enter **Messages** in either of the following two methods:

- 1) Press L.KEY and then select **Messages**;
- 2) Press **SMS** key directly.

7.1 Send a Message

You could send a message to one recipient or multiple recipients.

- 1) In Messages, press **Write Message** and L.KEY to compose a new message,
- 2) Input the text, press L.KEY twice to finish inputting the text,
- 3) You can choose **Send Only** to send to one recipient without saving, or **Save and Send** to send to one recipient with saving the message to **Sent Messages**, or **Save** to save the message to **Sent Messages** without sending out, or **Send to Many** to send multiple recipients, or **Send by Group** to send to all the group members.

7.2 Receive a Message

- 1) If there is a new message, the phone will ring alert. In idle mode, press L.KEY to read the message,
- 2) Or you could read the new message in the **Inbox**. Press **SMS** Key, scroll to **Inbox**, press L.KEY, scroll to the message you want to read.
- 3) Then press L.KEY you can
 - a) **Reply**: reply to the message
 - b) **Delete**: delete the message
 - c) **Edit**: edit in the message and then save or send
 - d) **Forward**: forward the message to other recipient(s)
 - e) **Erase All**: erase all message in the Inbox
 - f) **Use Number**: get all numbers in the message includes the sender's number. You can dial directly, or Send SMS directly, or save the number to phone book.

7.3 View Sent Messages

- 1) In **Messages**, scroll to **Sent Messages** and press L.KEY to view the outbox
- 2) Scroll to the message you want to read, press L.KEY to **Send, Edit, Delete, Erase All**, and **Use Number**.

We offer . . . We deliver . . .

7.4 Send a Message by using Templates

- 1) In **Messages**, scroll to **Templates**, press L.KEY to enter template menu,
- 2) There are 10 template messages in **Templates** menu, you could edit the template or delete the template,
- 3) Scroll to the template message you want to use, then press L.KEY, scroll to **Edit** or **Write Message**, press L.KEY, modify the message and then send out.

7.5 Message Settings

You can set SC Address (Message Center Number), Valid Period, Message Type, Delivery Report, Reply Path, Preferred Storage in Message Settings, also you could read messages' memory status in Message Settings.

7.6 Voice Message and Broadcast Message

Please contact your local operator to set the voice message and broadcast message.

8 Recent Calls

You can find **Missed, Dialed, Received, Erase Lists**, and **Call Duration** in **Recent Calls** menu.

In idle mode, press L.KEY and then select **Recent Calls**.

8.1 Missed

- 1) Select **Missed Calls** in **Recent Calls** menu,
- 2) The **Missed Calls** List will be displayed; you could scroll to the desired number,
- 3) Press L.KEY to: **View** the call information; **Delete** the call log, **Save the Number to Phone Book, Dial, Edit** this number, and **Send SMS** to this number.

8.2 Dialed

- 1) Select **Dialed Calls** in **Recent Calls** menu, or press **SELECT** key in idle mode,
- 2) The **Dialed Calls** List will be displayed; you could scroll to the desired number,
- 3) Press L.KEY to: **View** the call information; **Delete** the call log, **Save the Number to Phone Book, Dial, Edit** this number, and **Send SMS** to this number.

8.3 Received

- 1) Select **Received Calls** in **Recent Calls** menu,
- 2) The **Received Calls** List will be displayed; you could scroll to the desired number,
- 3) Press L.KEY to: **View** the call information; **Delete** the call log, **Save the Number to Phone Book, Dial, Edit** this number, and **Send SMS** to this number.

8.4 Erase Lists

Select **Erase Lists** in **Recent Calls** menu, you could scroll the cursor to erase **Missed, Dialed, Received** list.

8.5 Call Duration

Select **Call Duration** in **Recent Calls** menu, you could scroll the cursor to view duration of **Last call Time, Total Dialed, Total Received**, scroll to **Erase All** to erase all duration.

9 Settings

9.1 Set Time and Date

- 1) Select **Display** in **Settings**, select **Time and Date** in **Display**,
- 2) Scroll to **Set Time/Date**, press L.KEY, and scroll to 1 to set time, scroll to 2 to set date.
- 3) If you want to change the format of time and date, select **Display** in **Settings**, select **Time and Date** in **Display**, then scroll to **Set Format**, press L.KEY. Scroll to 1 and press L.KEY to set time format, 12hr

We offer . . . We deliver . . .

or 24hr; scroll to 2 and press L.KEY to set date format, DD/MM/YYYY, MM/DD/YYYY,
YYYY/MM/DD, YYYY-MM-DD.

9.2 Set Language

- 1) Select **Display** in **Settings**, select **Language** in **Display**,
- 2) Scroll to language you desired, press L.KEY to set language.

9.3 Set Preferred Input Methods

- 1) Select **Display** in **Settings**, select **Preferred Input Methods** in **Display**,
- 2) Scroll to the input method you desired, press L.KEY to set input method. The input methods include **Smart ABC, Smart abc, Multitap ABC, Multitap abc, Numeric, Multitap VI, Multitap vi**.

9.4 Set LCD Contrast

- 1) Select **Display** in **Settings**, select **Contrast** in **Display**,
- 2) Press $\uparrow\downarrow$ to decrease/increase the contrast of the LCD. Press L.KEY to save the setting.

9.5 Set LCD Backlight

- 1) Select **Display** in **Settings**, select **Backlight** in **Display**,
- 2) Scroll to the time you want to switch off the backlight, press L.KEY to save the setting. The time includes **5 Sec, 15 Sec, 30 Sec, 45 Sec**.

9.6 Set Dial Delay

The phone can autodial after you input a number; you can set the time after you input the number by setting Dial Delay, the phone autodial.

- 1) Select **Display** in **Settings**, select **Dial Delay** in **Display**,
- 2) Scroll to the time you desired, press L.KEY to save the setting. The time includes **5s, 6s,7s, 8s,9s** or **close** autodial.

9.7 Speed Dial

The phone support speed dials function. You can hold the numeric key to dial the number you set.

- 1) Select **Display** in **Settings**, select **Speed Dial** in **Display**,
- 2) If you want to use the speed dials function, you need to enable this function first. Scroll to **Enable Speed Dial**, press L.KEY to enable this function,
- 3) Then scroll to **Set Number**, press L.KEY, scroll to the number you need to set. Press L.KEY twice to select the contact you want to set the speed dials, and then press L.KEY to confirm the setting.

9.8 Network Setup

You can search or setup a new network here. We recommend that use automatic selection mode.

9.9 Security Setup

9.9.1 SIM Lock

Please consult your operator for details on this function.

9.9.2 Phone Lock

Please consult your operator for details on this function.

We offer . . . We deliver . . .

9.9.3 Auto Keypad Lock

- 1) In Settings, select Security Setup,
 - 2) In Security Setup, select Auto Keypad Lock,
 - 3) Scroll to the timer you want to lock your phone in idle mode, press L.KEY to save the settings.
- In idle mode, to unlock the keypad, press R.KEY, your phone will prompt “Press # to Unlock Keypad”, press # key to unlock keypad. In idle mode, press R.KEY and # key to lock the keypad.

9.9.4 Fixed Dial

Please consult your operator for details on this function.

9.9.5 Barred Dial

Please consult your operator for details on this function.

9.9.6 Change Password

Please consult your operator for details on this function.

9.10 Set Alarm

You can set 5 alarms.

- 1) In **Settings**, Select **Alarm**,
- 2) Select any one from 5 alarms, press L.KEY to edit the alarm,
- 3) Scroll to 1, press * key or # key to active/deactivate the alarm,
- 4) Scroll to 2 to set alarm time,
- 5) Scroll to 3 to set alarm repeat way, press * key or # key to switch the alarm repeat way, includes **Once**, **Everyday**, **Days** (If the repeat way is Days, press ↓ to select the days).

9.11 Restore Factory Settings

- 1) In **Settings**, Select **Restore Factory Settings**,
- 2) The initial password is “1122”. Input the password to restore factory settings.

10 Sound

Here you can set the ring tone and volume. In main menu, select **Sound**, or press **MUTE** key to enter sound menu.

10.1 Ringer

In **Sound** menu, select **Ringer**, then you can set the ringer for **Incoming Call**, **Alarm**, **Power On**, **Power Off**, **Message Tone**, **Keypad Tone**.

10.2 Volume

In **Sound** menu, select **Volume**, then you can set the volume for **Ring Tone**, **Key Tone**.

10.3 Ring Type

In **Sound** menu, select **Ring Type**, then you can set the ring type as **Single**, **Repeat**, **Ascending**.

10.4 Alert

In **Sound** menu, select **Alert**, and then press L.KEY you can turn on/off the alert of **Warning**, **Error**, and **Camp on**, **Call Connect**.

We offer . . . We deliver . . .

11 Call Services

11.1 Caller ID

Caller ID is a phone service, transmits a caller's number to the called party's phone.

- 1) In Call Services, Select Caller ID,
- 2) There are 3 choices, Set by Network, Hide ID, Send ID.

11.2 Call Waiting

If a calling party places a call to a called party which is otherwise engaged, and the called party has the call waiting feature enabled, the called party is able to suspend the current telephone call and switch to the new incoming call, and can then negotiate with the new or the current caller an appropriate time to ring back if the message is important, or to quickly handle a separate incoming call.

There are 3 options in **Call Waiting** menu, **Activate, Deactivate, Query Status**. Please contact your local operator to apply for this service. Please consult your operator for details on the operations.

11.3 Call Divert

Call Divert allows you to divert an incoming call to any other number no matter your phone is switched off or not. You can still receive calls through the specified phone when Call Divert is activated.

There are 3 options in **Call Divert** menu, **Divert All Voice Calls, Divert If Unreachable, Divert If No Answer, Divert If Busy**, and **Cancel All Divert**. Please contact your local operator to apply for this service. Please consult your operator for details on the operations.

11.4 Call Barring

Call Barring allows the user to prevent Incoming Calls and Outgoing Calls.

There are 4 options in **Call Barring** menu, **Outgoing Calls, Incoming Calls, Cancel All**, and **Change Barring PW**. Please contact your local operator to apply for this service. Please consult your operator for details on the operations.

11.5 Call Time Reminder

Call Time Reminder will remind the user calling time.

There are 3 options in Call Time Reminder menu, **Off, Single** (1-3000 sec), **Periodic** (30-60 sec)

11.6 Auto Redial

In **Call Services**, scroll to **Auto Redial**, press L.KEY to turn on/off auto redial function.

11.7 Black List

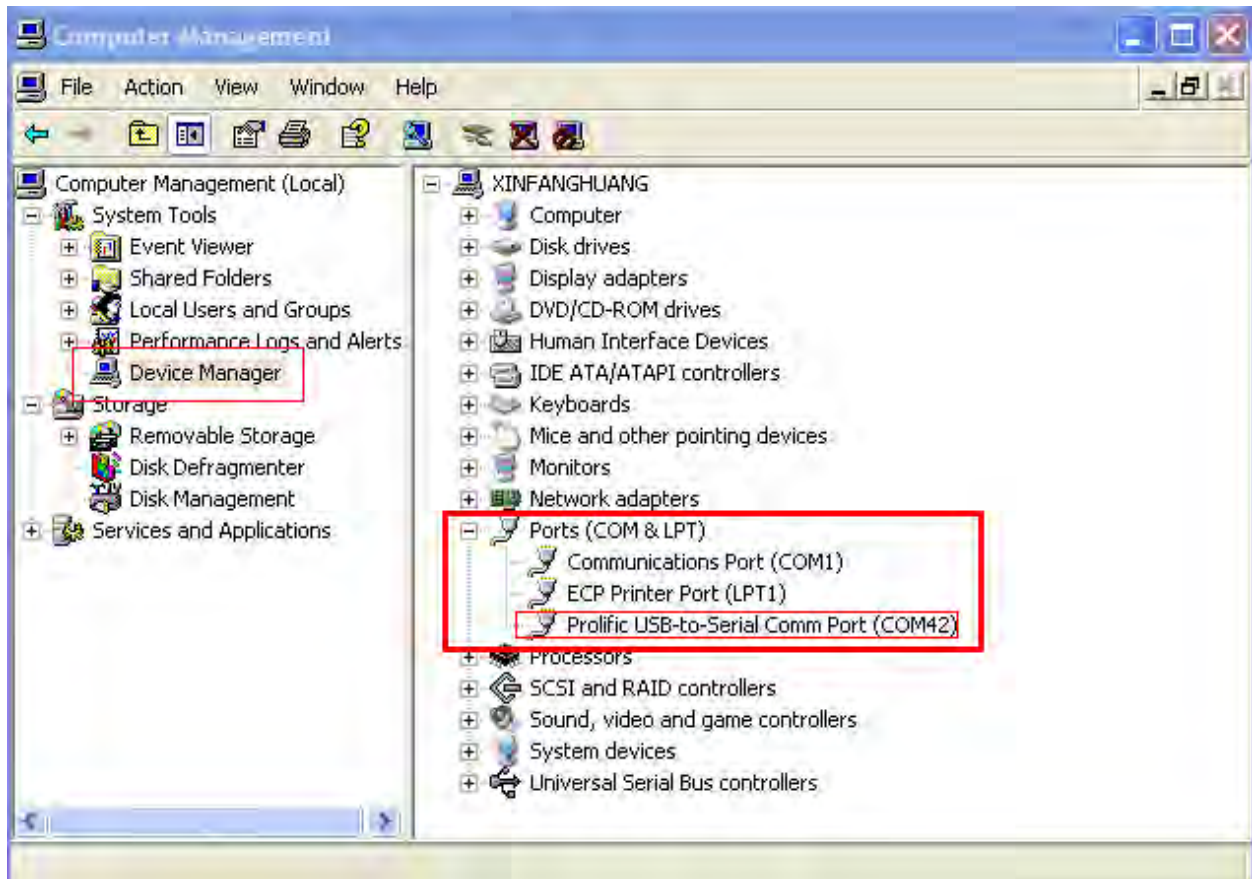
You can add contacts to black list to block the contacts.

In **Call Services**, select **Black List**. Scroll to 1, press L.KEY to turn on/off black list function. Scroll to 2, press L.KEY, input the number you want to block, press L.KEY to save the list.

We offer . . . We deliver . . .
12 Connect to network.

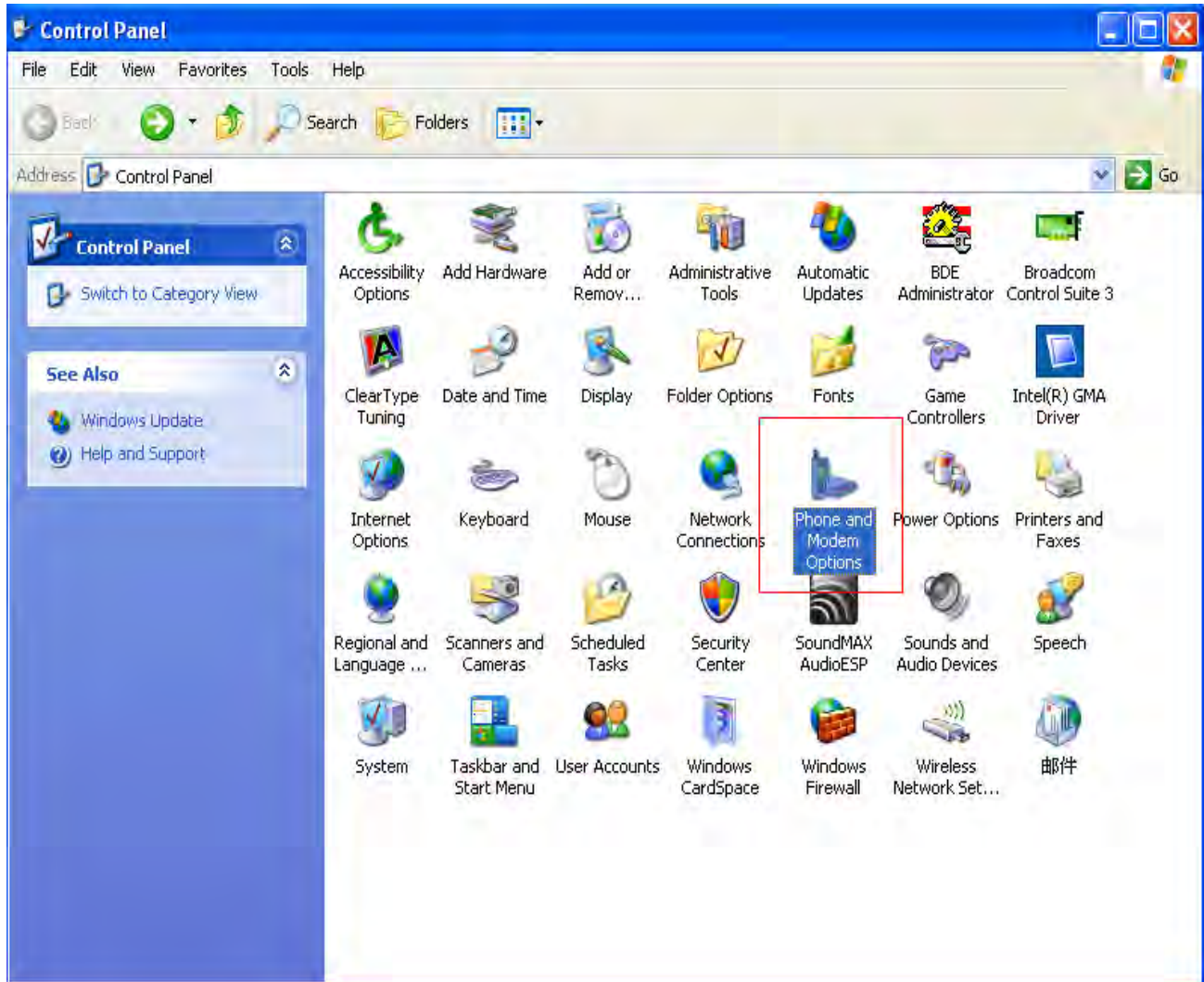
12.1 Use cable connects FWP and Pc.

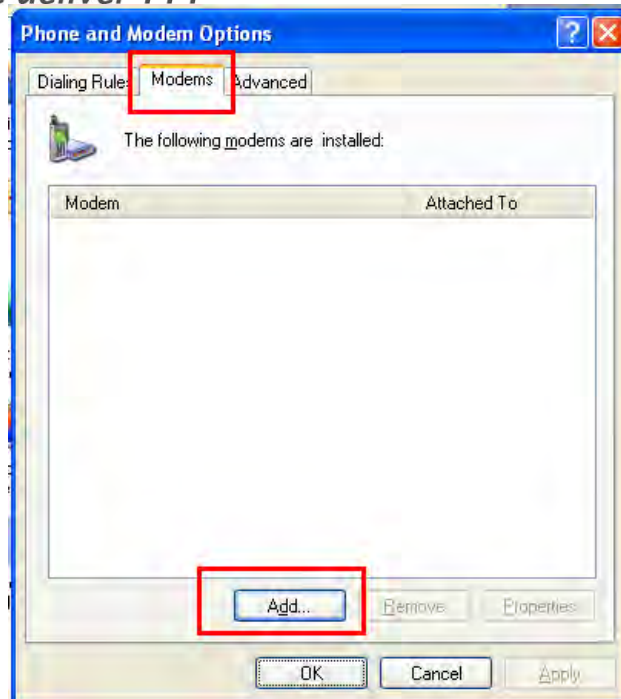
12.2 Install the cable driver “PL2303_XP2KME98Driver_Setup.exe”



We offer . . . We deliver . . .

12.3 Enter the windows “Control Panel”-> “Phone and Modem Options” to Add a Modem.

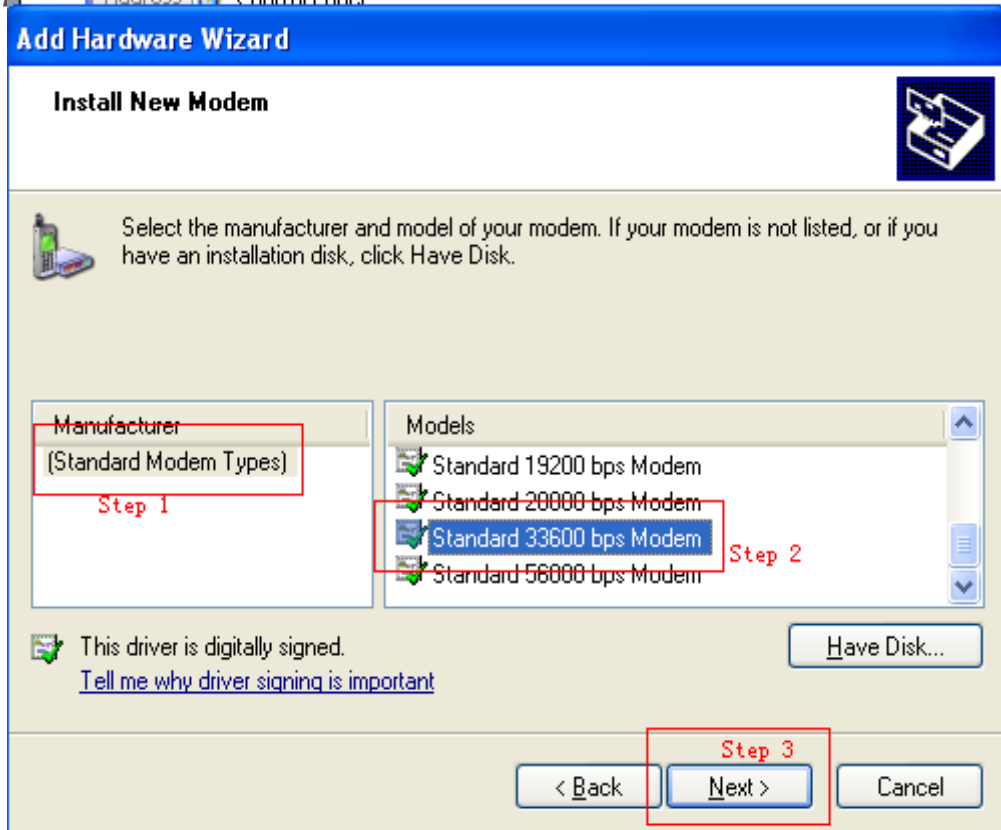




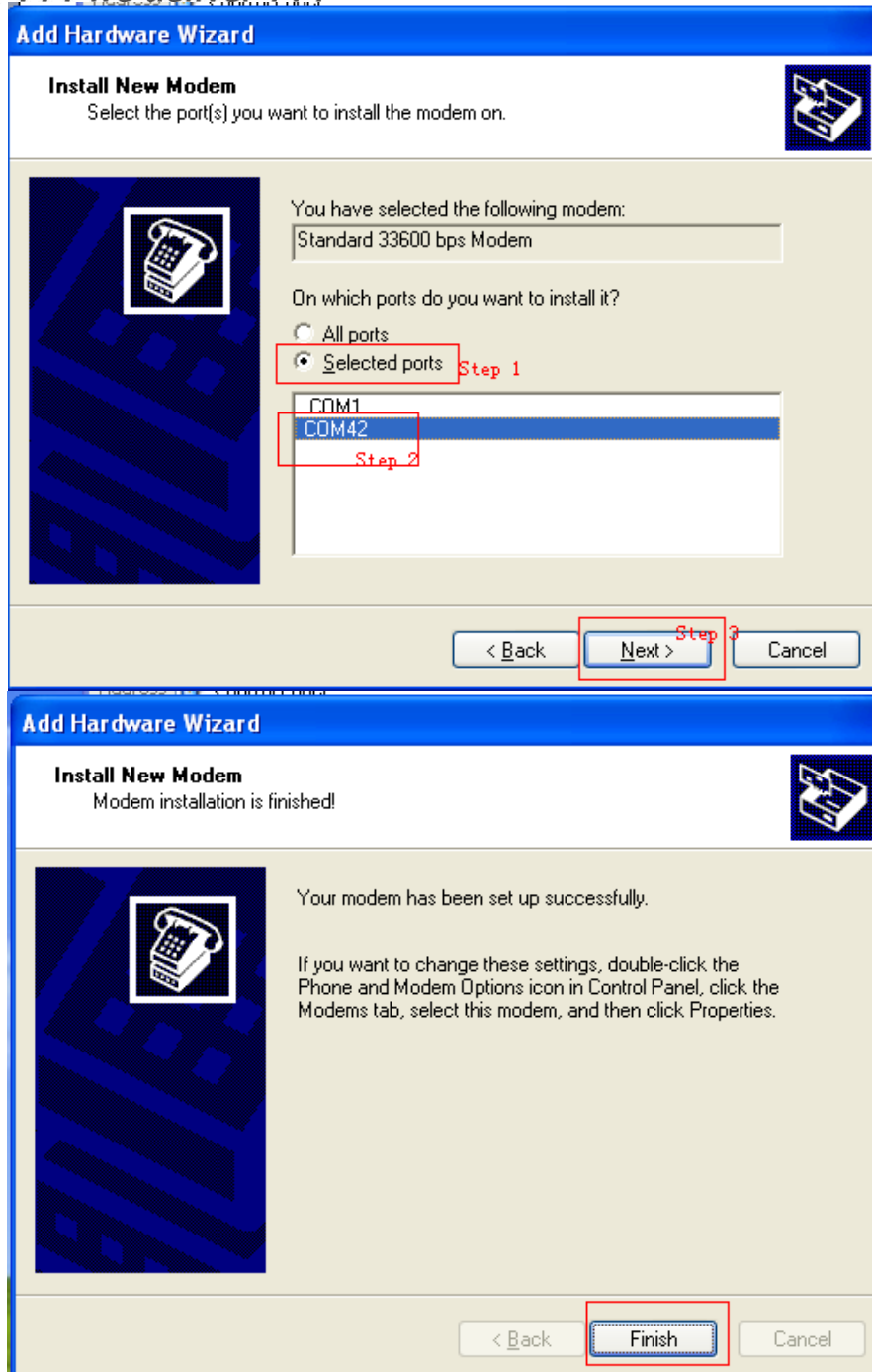
12.4 Select “Don’t detect my modem; I will select it from a list”

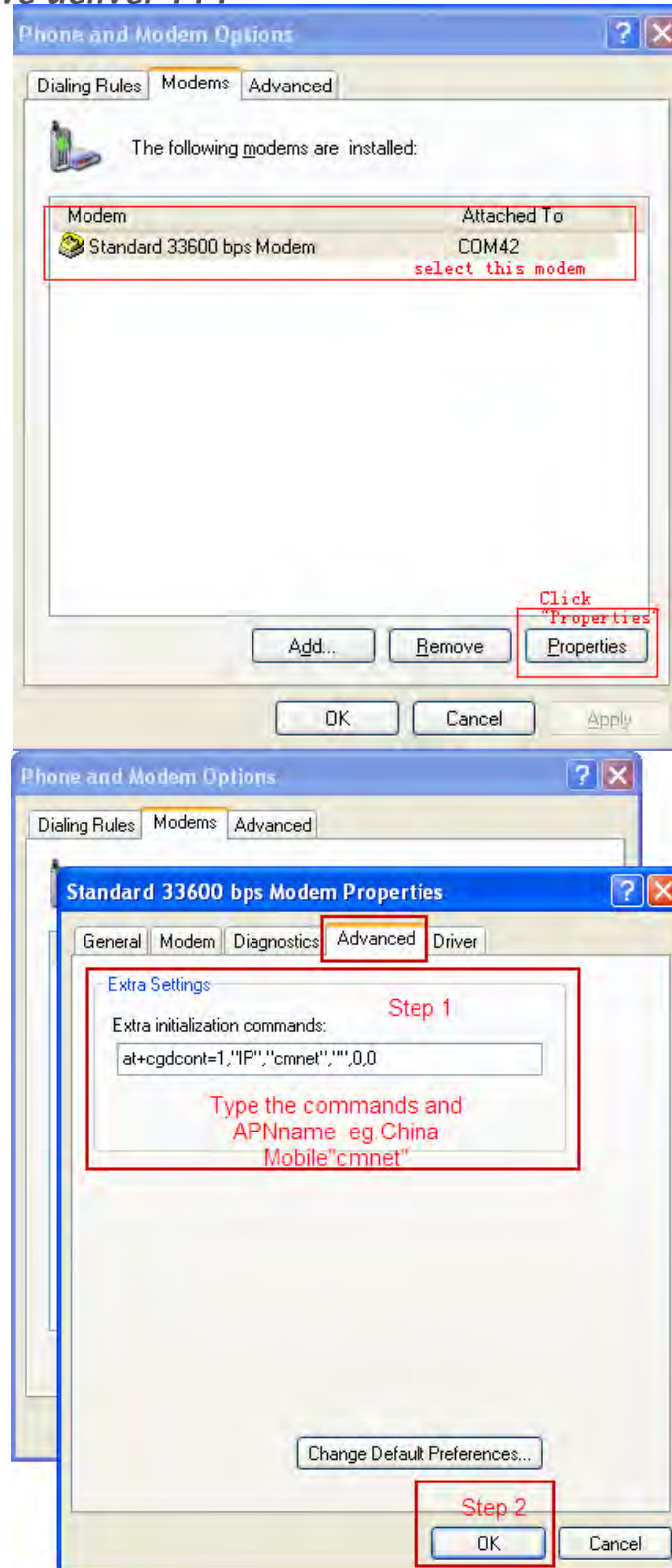


12.5 Select a Models “Standard 33600 bps Modem”



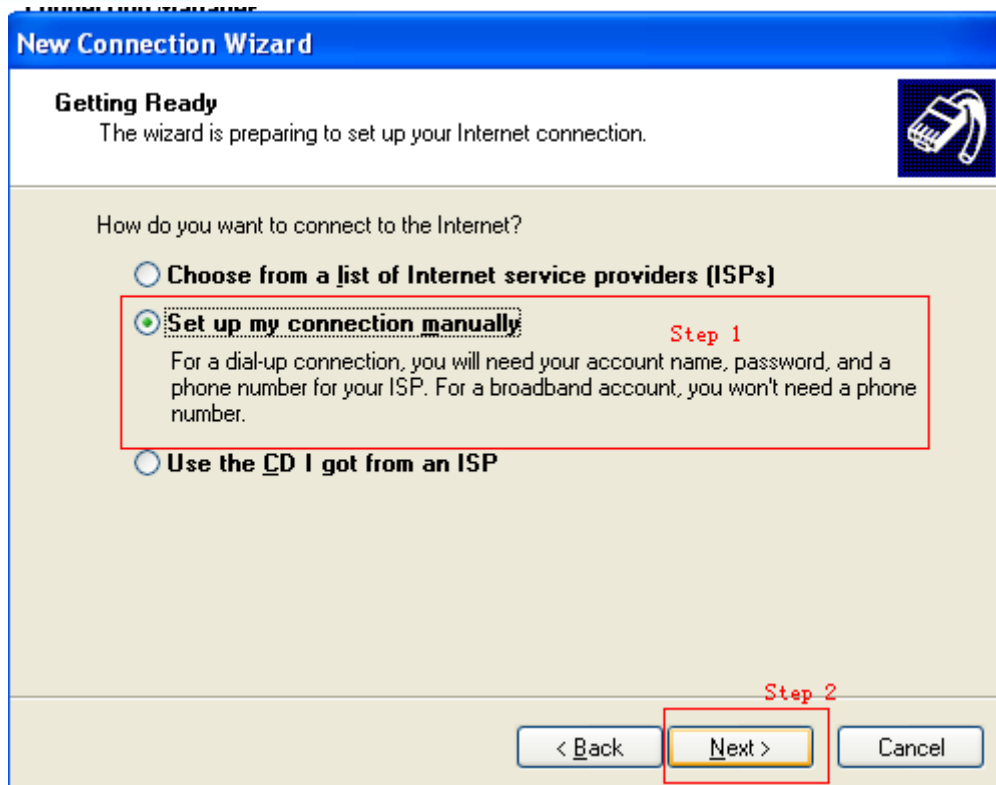
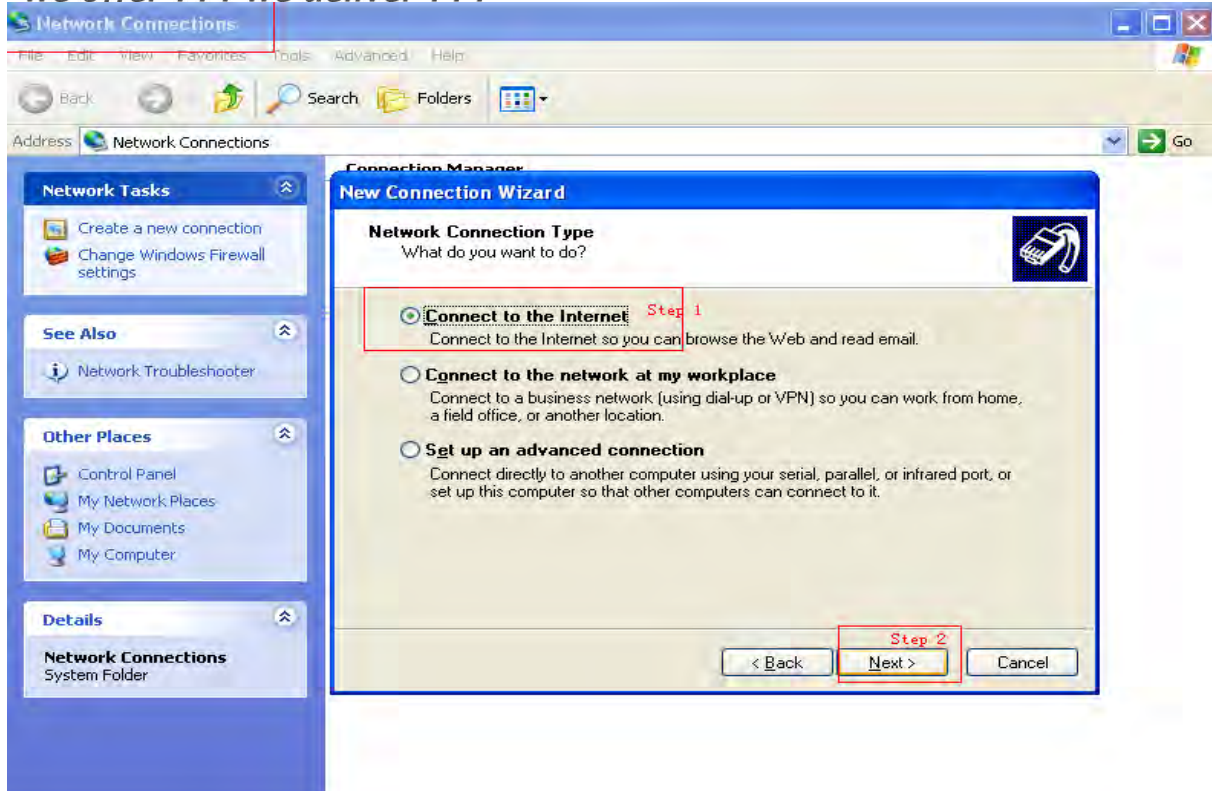
12.6 “Selected Ports”->choose a port same to the Cable’s port (eg: COM42)





12.7 Enter "control panel"-> "Network Connections" -> "Create a new connection"

We offer . . . We deliver . . .



New Connection Wizard

Internet Connection
How do you want to connect to the Internet?

Connect using a dial-up modem
This type of connection uses a modem and a regular or ISDN phone line.

Connect using a broadband connection that requires a user name and password
This is a high-speed connection using either a DSL or cable modem. Your ISP may refer to this type of connection as PPPoE.

Connect using a broadband connection that is always on
This is a high-speed connection using either a cable modem, DSL or LAN connection. It is always active, and doesn't require you to sign in.

< Back **Next >** Cancel

New Connection Wizard

Connection Name
What is the name of the service that provides your Internet connection?

Type the name of your ISP in the following box.

ISP Name **Step 1**

Atel

The name you type here will be the name of the connection you are creating.

< Back **Next >** Cancel

New Connection Wizard

Phone Number to Dial
What is your ISP's phone number?

Type the phone number below. **Step 1** (eg: "China Mobile")

Phone number:
*99#

You might need to include a "1" or the area code, or both. If you are not sure you need the extra numbers, dial the phone number on your telephone. If you hear a modem sound, the number dialed is correct.

Step 2

< Back **Next >** Cancel

New Connection Wizard

Connection Availability
You can make the new connection available to any user or only to yourself.

A connection that is created for your use only is saved in your user account and is not available unless you are logged on.

Create this connection for:

Anyone's use
 My use only

< Back **Next >** Cancel

New Connection Wizard

Internet Account Information
You will need an account name and password to sign in to your Internet account.

Type an ISP account name and password, then write down this information and store it in a safe place. (If you have forgotten an existing account name or password, contact your ISP.)

User name:

Password:

Confirm password:

Use this account name and password when anyone connects to the Internet from this computer

Make this the default Internet connection

< Back **Next >** Cancel

New Connection Wizard

Completing the New Connection Wizard

You have successfully completed the steps needed to create the following connection:

Atel

- Make this the default connection
- Share with all users of this computer
- Use the same user name & password for everyone

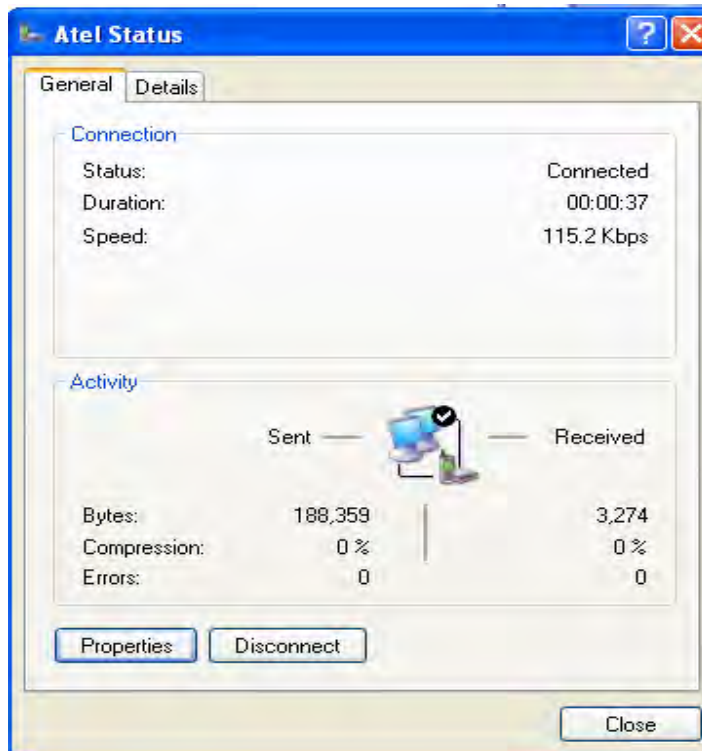
The connection will be saved in the Network Connections folder.

Add a shortcut to this connection to my desktop

To create the connection and close this wizard, click Finish.

< Back **Finish** Cancel

12.8 Click “Dial” button. Connect to networks successfully.



13 Technical Parameters

Charger AC Input	90 ~ 240 VAC, 50~60Hz
Charger DC Output	5.3VDC @800mA
Backup Battery	3.6V/1200mAh Li-ON Rechargeable Battery
Operation Temperature	-10°C~ 50 °C

FCC Regulations:

This device complies with Part 15 of the FCC Rules.

Operation is subject to the following two conditions:

- (1) this device may not cause harmful interference, and
- (2) this device must accept any interference received, including interference that may cause undesired operation.

Changes or modifications not expressly approved by the party responsible for compliance could void the user's authority to operate the equipment

Note: This equipment has been tested and found to comply with the limits for a Class B digital device, pursuant to part 15 of the FCC Rules. These limits are designed to provide reasonable protection against harmful interference in a residential installation. This equipment generates, uses and can radiate radio frequency energy and, if not installed and used in accordance with the instructions, may cause harmful interference to radio communications. However, there is no guarantee that interference will not occur in a particular installation. If this equipment does cause harmful interference to radio or television reception, which can be determined by turning the equipment off and on, the user is encouraged to try to correct the interference by one or more of the following measures:

- Reorient or relocate the receiving antenna.
- Increase the separation between the equipment and receiver.
- Connect the equipment into an outlet on a circuit different from that to which the receiver is connected.
- Consult the dealer or an experienced radio/TV technician for help.

SAR Information

The SAR limit adopted by USA is 1.6 Watts/kilogram (W/kg) averaged over one gram of tissue.

This device (**FCC ID: XYOAGP-V800R**) was tested for typical body-worn operations with the back of the phone in direct touch with the human body.

The highest SAR value reported to the FCC is **1.336** W/kg.

To maintain compliance with FCC RF exposure requirements, use only beltclips, holsters or similar accessories that do not contain metallic components in its assembly. The use of accessories that do not satisfy these requirements may not comply with FCC RF exposure requirements, and should be avoided.