



at&t

Your world. Delivered.



## Getting Started Guide

AT&T 8525





# Table of Contents

<b>Welcome to AT&amp;T</b>	<b>4</b>
What's in the Box?	4
AT&T 8525 Features	5
<b>Set Up Your AT&amp;T 8525</b>	<b>6</b>
Insert Battery	6
Get to Know Your AT&T 8525	7
Learn to Use the AT&T 8525's Trackwheel and Keyboard	9
Type on the Keyboard	10
Making a Call	13
Send Text Messages	14
<b>Use the AT&amp;T 8525</b>	<b>16</b>
Browse the Web	16
Set Up Email	18
Personal Email Setup	19
Corporate Email Setup	22
Sync Your AT&T 8525 with Your Computer (Optional)	29
Send a Digital Photo or Video	31
Play Music on Your Phone	35
Push to Talk	
<b>Tips and Tricks</b>	<b>38</b>
<b>Frequently Asked Questions</b>	<b>40</b>
<b>Status Indicators</b>	<b>42</b>

# Welcome to AT&T

## What's in the Box?

Remove the following items from the box to help you set up your AT&T 8525.



**AT&T 8525**

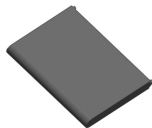


**Getting Started Guide**



**Getting Started Disc**

Includes User Manual, Microsoft Active Sync, and Warranty information for your AT&T 8525.



**Rechargeable Battery**



**AC Adapter**



**USB Sync Cable**



**Stereo Headset**



**Y Cable**



**Extra Stylus**

### Note:

An extra stylus has been included in the box.

AT&T recommends:

- Use the stylus that fits in the bottom right corner of the device.
- Put the extra stylus somewhere safe.

## AT&T 8525 Features



# Set Up Your AT&T 8525

## Insert Battery

1. Remove battery cover.
2. Insert the battery so that the gold contacts are aligned.
3. Gently push the battery down to snap it into place.
4. Align the tabs at the top of the battery cover and snap into place.



Steps?

4

Takes?

1 minute

Tip:

Your battery comes partially charged. To find out how to charge your device, refer to the **'Charge the battery'** section of your User Manual (on the CD).

## Get to Know Your AT&T 8525

### Turn On Your AT&T 8525

Press POWER and hold (1 to 2 seconds) to turn on your device.

### Align Your Screen

When you turn on your AT&T 8525 for the first time, you will be asked to complete a screen calibration process.

Use your stylus to tap the crosshairs and follow the on screen prompts.

The initialization process takes about three minutes and when it's complete your AT&T 8525 will display the Today screen.



**Note:**  
To turn your device OFF, press POWER and hold (3 to 4 seconds).

**Note:**  
You can extend your stylus by pulling it on both ends.

# Set Up Your AT&T 8525

## The Today Screen

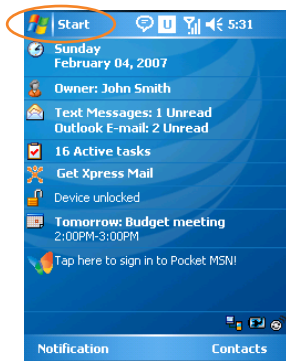
The Today screen displays important information, such as upcoming appointments and status indicators.

Tap Start to see your menu of programs, applications and settings.

## Sleep Mode

Your AT&T 8525 will go to sleep, or into standby mode (screen darkens) to save battery power after 30 seconds of non-use. You can still receive messages and calls while your device is in the sleep mode.

To switch to and from sleep mode press POWER once.



### Note:

You can customize your 8525's Today screen, including the background image by tapping Start> Settings> Personal > Today.

### Tip:

You can change the sleep settings by tapping Start > Settings > System > Backlight > Battery Power.



## Learn to Use the AT&T 8525's Trackwheel and Keyboard

Check out the Trackwheel.

Roll the trackwheel to move the cursor and highlight items on the screen.

Click (press) the trackwheel to open the menu or select items.









Slide Open Your AT&T 8525.

Slide the AT&T 8525's main screen to the right to reveal the keyboard.



# Set Up Your AT&T 8525

## Type on the Keyboard

- To type lowercase letters, press the keys using your thumbs or finger.
- To perform the command shown on screen above the key, press the Left or Right SOFT KEY. 
- To type a single uppercase letter, press Cap/Shift key and then press the corresponding key. 
- To use all uppercase letters, press and hold Cap/Shift key. 
- To enter a number or symbol, press Function key and then press the corresponding key (this is how you will access special symbols or keys like @ or \_). 
- To open the Start menu, press Windows® Start key. 
- To verify your data entries or exit the program in use, press OK key. 



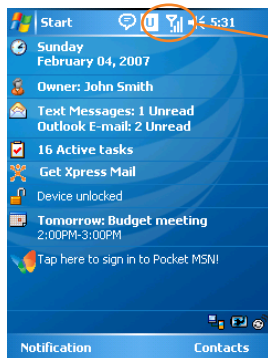
**Tip:**  
See inside back cover for keyboard shortcuts.

# Set Up Your AT&T 8525

## Check your AT&T Wireless Network Connection

You can check to make sure your AT&T 8525 is connected to a wireless network by looking for the signal strength icon and the data connection icon at the top right of your screen.

### Status Indicators



Indicates maximum signal strength.



No signal.



Phone is turned off.



GPRS data connection is available.



EDGE data connection is available.



3G UMTS data connection is available.

More help?  
See the Getting Connected chapter of the User Manual (on the CD) for more information about getting connected to a wireless network.

## Making a Call

1. Open the Phone screen by pressing the green phone button (SEND/TALK).
2. Dial the number by tapping the numbers on the screen.
3. Press the green phone button (SEND/TALK) or tap Talk on the screen.



Steps?  
3

Takes?  
1 minute

**Tip:**  
You can also access the phone screen through the Start menu.

You can also use your slide out keyboard to enter the phone number you wish to dial.

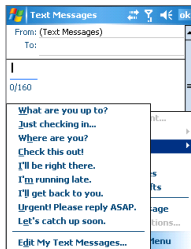
**Did you know...**  
that you can maintain your data connection when connected to a voice call?

## Send Text Messages

Your AT&T 8525 is capable of sending and receiving email, text messages (SMS), and MMS messages as long as your device is connected to the network.

### Compose and send a message

1. From Today screen, tap Start > Tap Messaging > Text Messages.
2. Tap New.
3. Enter the email address or text message address of one or more recipients, separating them with a semicolon. To access addresses and phone numbers from Contacts, tap To.
4. Enter your message.
5. Tap Send to send the text message.



Steps?  
4

Takes?  
1 minute

Note:  
To quickly add common messages, tap Menu > My Text and tap a desired message. from step 4 and put in note column.

# Set Up Your AT&T 8525

## Set Up Your Voice Mail

Tap Start, then Phone, then tap and hold the 1 key. You will be connected to the voicemail system, which will then ask you to:

1. Create your password.
2. Record your name.
3. Record a greeting.

## Check Your Voice Mail Messages From Your AT&T 8525

1. Tap and hold the 1 key.
2. Follow the voice prompts.

Steps?

3

Takes?

1 minute

Check Your Voice Mail Messages from Other Phones (All locations except Puerto Rico):

1. Dial your 10-digit wireless number.
2. Press the \* key when you hear your personal greeting.
3. Enter your personal pass code.
4. Follow the voice prompts.

(For Puerto Rico, press the # key in step 2.)

# Use the AT&T 8525

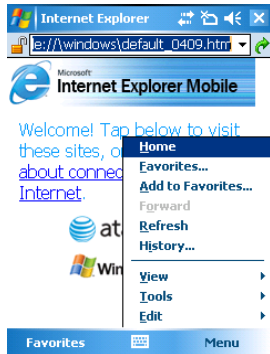
## Browse the Web

Use Internet Explorer Mobile to directly access the wireless web on your AT&T 8525.

Use MEdia Net to access AT&T's premium content service.

### Internet Explorer Mobile Browser

1. Tap Start.
2. Tap Internet Explorer.
3. In the address bar that appears at the top of the screen, enter the URL you want to connect to.
4. Tap green arrow or hit Enter.



Steps?  
4

Takes?  
1 minute

**Note:**  
For functions such as web browsing and email, AT&T recommends a data rate plan, a feature you can add to your account, so that you are not charged for web browsing and email on a pay per session/use basis.

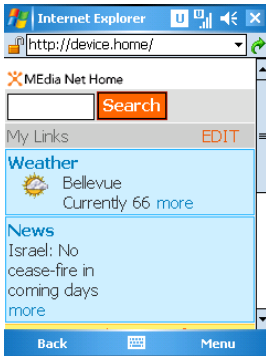
If you do not have a data plan associated with your phone go to [www.cingular.com](http://www.cingular.com) or call 1-866-CINGULAR to add, upgrade, or change your data plan.



# Use the AT&T 8525

## Media Net

MEdia Net is the AT&T content service for multimedia options like ring tones, games and other cool content.



## Browse MEDIA Net

1. From the Today screen, tap Start > Internet Explorer.
2. Press Menu > Favorites.
3. Scroll to MEdia Net, press Enter.

## Personalize your MEDIA Net Home Page

1. From MEdia net home page, select Customize MEdia Net.
2. Select Edit Categories
3. Select the categories you would like to appear on your home page.
4. Select Save.

Steps?  
7

Takes?  
2 minutes

**Important Note:**  
On your 8525, you can be looking up information on the Web while you're on a call.

## Set Up Email

Choose the best email option for you

Your AT&T 8525 can connect to:

- [Personal Email Accounts](#) (like Yahoo!, AOL, or Comcast.)  
See the Personal Email Setup section on the next page to get started.
- [Corporate Email Accounts](#) (like Microsoft Exchange or Lotus Notes).  
>> Flip to page 21 of this guide to get started on Corporate Email Setup.

**Note:**

For functions such as web browsing and email, AT&T recommends a data rate plan, a feature you can add to your account, so that you are not charged for web browsing and email on a pay per session/use basis.

If you do not have a data plan associated with your phone go to [www.cingular.com](http://www.cingular.com) or call 1-866-CINGULAR to add, upgrade, or change your data plan.

# Use the AT&T 8525

## Personal Email Setup

Personal email accounts include accounts you have with services like Yahoo!, AOL, or Comcast.

There are two ways to get personal email on your AT&T 8525:

- Xpress Mail (recommended).
- Microsoft Outlook Mobile (manual set up).

AT&T recommends Xpress Mail because it:

- Automates the setup process.
- Includes features such as email synchronization.  
(This means changes made on the AT&T 8525, including deletes, are automatically reflected in your personal email account).

### Xpress Mail

(will work with the majority of email services)

1. Tap Get Xpress Mail on your Today screen.
2. Tap Install Now to launch the Xpress Mail download site.
3. Tap Download Now on the download page.

AT&T 8525



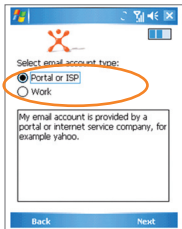
Steps?  
12

Takes?  
10 minutes

**Note:**  
Some personal email services require a premium subscription to access email from a mobile device. If you complete this setup process and your email does not start arriving on your AT&T 8525, check with your email provider to validate eligibility.

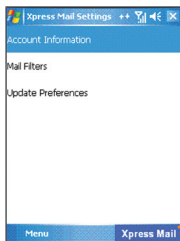
**Tip:**  
For instructions on Microsoft Outlook Mobile manual set up, go to [www.cingular.com/tutorials/cingular8525](http://www.cingular.com/tutorials/cingular8525)

4. Tap Yes. ('Open file after download' should be checked.)
5. Tap OK to accept the license agreement.
6. Enter your 10 digit mobile (cell) number (numbers only) and tap Next.
7. Select Portal or ISP and tap Next.



8. Choose your provider and tap Next (If your email provider is not listed, tap More to view an additional list of personal email providers.)

9. Enter your User Name and Password and tap Next to continue.
10. Tap Register and wait for the registration process to complete.
11. When the process is complete, tap OK when the message appears telling you the device has been successfully registered. Tap on OK to go to your settings.
12. After successfully registering, your AT&T 8525 will automatically display the Xpress Mail Settings screen.



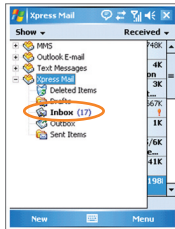
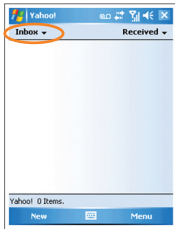
No setting changes are required; just click Xpress Mail in the bottom right hand corner.

**Note:**  
If your email provider is not listed on the two screens described here, go to [www.cingular.com/tutorials/cingular8525](http://www.cingular.com/tutorials/cingular8525)

# Use the AT&T 8525

## Send and Receive Personal Email

1. Tap Start > Messaging.
2. Tap the Inbox item and select your email provider.



3. Tap Menu > Send/Receive to synchronize your email.
4. To compose a new email, tap New.
5. When you are finished composing your message, tap Send.

Steps?  
5

Takes?  
1 minute

## Corporate Email Setup

A Corporate email account (like Microsoft Exchange or Lotus Notes) is an account managed by a company's IT organization.

There are two ways to access your corporate email on your AT&T 8525:

- Self Service – Xpress Mail is a self service option for accessing your corporate email from your AT&T 8525 without support from IT.
- IT Managed – Good Mobile Messaging and Microsoft Direct Push require that your IT organization install software centrally and provide you access.  
>> Flip to page 29 of this guide for IT Managed corporate email.

### Self-Service (Xpress Mail)

Xpress Mail can provide wireless access to your corporate email from your AT&T 8525 without support from IT.

There are two ways to access your corporate email on your AT&T 8525:

- Work email address.
- The type of mail server your company runs (Microsoft Exchange, Lotus Notes or IMAP).
- The computer you use to access your corporate email (must be connected to the Internet).

# Use the AT&T 8525

## Start On Your Desktop Or Laptop Computer

1. Open Internet Explorer to the following page: <http://xpressmailpe.cingular.com>.
2. Click Register Now and fill in required form fields.

The screenshot shows the registration page for Xpress Mail Personal Edition. At the top, there are three steps: Step 1 (Activate Service), Step 2 (Install & Connect), and Step 3 (Register Device). The current step is Step 1, titled "Activate your Xpress Mail Personal Edition service". The form includes fields for First Name, Last Name, Mobile Number (with a dropdown for country code), Email Address, Xpress Mail User Name, Xpress Mail Password, and Security Answer. A "Next >" button is at the bottom right. The footer contains the SEVEN logo and Cingular branding.

3. On the download page, click Download.

Steps?  
7

Takes?  
10 minutes

Important:  
You will create an Xpress Mail User Name and Password in this step. You will need to remember and use this user name and password later in the set up.

4. Click the Open or Run button and the desktop software will begin to download.
5. Click Yes when asked whether or not you want to install the desktop software.
6. Click Next to begin setup and follow the onscreen instructions. When prompted for a user name and password, use those created in step 2.
7. When Xpress Mail has successfully connected to your corporate email account, you will receive a message confirming that your software is installed and you are now connected to Xpress Mail.



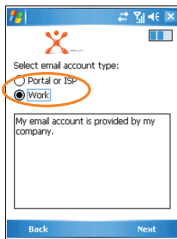
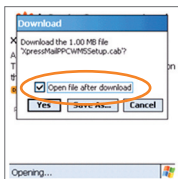
Now all you need to do is access your corporate email from your AT&T 8525.



# Use the AT&T 8525

## Complete the Setup Process on your AT&T 8525

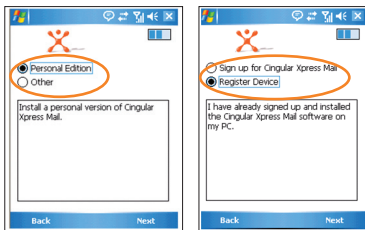
1. Tap Get Xpress Mail on your Today screen.
2. Tap Install Now to launch the Xpress Mail download site.
3. Tap Download Now on the download page.
4. Tap Yes ('Open file after download' should be checked).
5. Tap OK to accept the license agreement.
6. Enter your 10 digit mobile (cell) number (numbers only) and tap Next.
7. Select Work and tap Next.



Steps?  
13

Takes?  
10 minutes

8. Select Personal Edition and tap Next.
9. Select Register Device and tap Next.



10. Enter the Xpress Mail User Name and Password you created online earlier and tap Next.
11. Tap Register.

12. After successfully registering, your AT&T 8525 will automatically display the Xpress Mail Settings screen. No setting changes are required; just click exit in the top right hand corner.

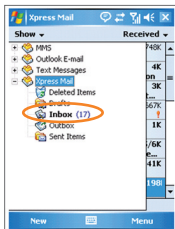
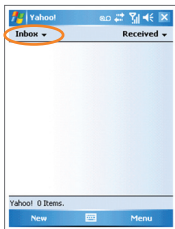
13. Tap OK to close the download screen shown below.



# Use the AT&T 8525

## Send and Receive Corporate Email

1. Tap Start > Messaging.
2. When you are in Messaging, tap on the Inbox drop down menu and select the Xpress Mail section.



3. In the Xpress Mail section tap on the Inbox view.
4. To compose a new email, tap New.
5. In the new email, type in the email address that you want to send the message to, type in the Subject and body of the message and tap Send.

Steps?  
5

Takes?  
1 minute

## IT Managed

IT managed email means your company has installed **Good Mobile Messaging** or **Microsoft Direct Push** software to enable wireless synchronization of corporate email. You need to have an account established on that server by an IT administrator before you get set up.

**Good™ Mobile Messaging** provides real-time wireless push synchronization of email, calendar, contacts, to-do, and notes for Microsoft Outlook and Lotus Notes. You must have an account on your company's Good Mobile Messaging server. Contact your IT department if you do not have an account. A "PDA Connect for Good" data plan must also be activated on your AT&T Wireless account before using Good Mobile Messaging. Set-up instructions for Good will be sent to you via email upon your account activation.

**Microsoft Direct Push** provides wireless access to your corporate Microsoft® email, contacts, calendar and tasks. Your Exchange Admin needs to enable Mobile Services on the Exchange Server. Activate a "PDA Connect for Microsoft Direct Push" data plan on your AT&T Wireless account before using Direct Push.

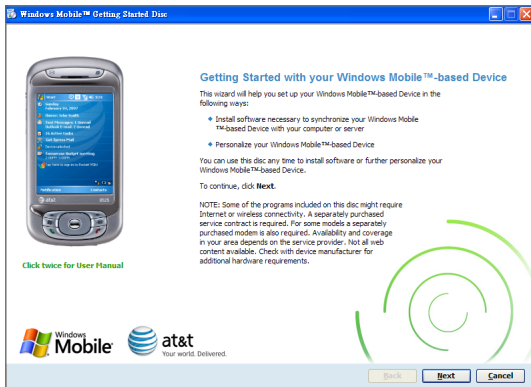
# Use the AT&T 8525

## Sync Your AT&T 8525 With Your Computer (Optional)

1. Insert the Getting Started CD into in your PC.
2. Follow the onscreen instructions to install ActiveSync and run the Pocket PC Sync Setup Wizard.

Steps?  
3

Takes?  
1 minute

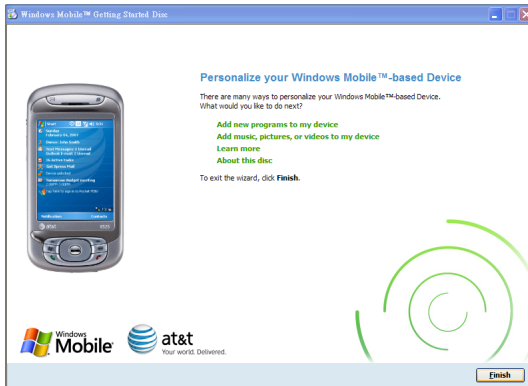


Important:  
Ensure your AT&T 8525 is NOT plugged in to your computer until AFTER you've completed installing ActiveSync.

If you don't have the CD, or to download the latest version of ActiveSync, go to <http://www.microsoft.com/windowsmobile/activesync/default.msp>.

# Sync Your AT&T 8525 With Your Computer (Optional)

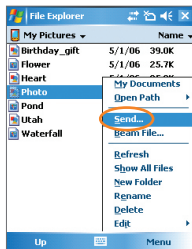
3. Click Finish to exit the wizard. Next time you want to sync your Pocket PC, simply plug it into your computer using the USB cable and it will sync automatically.



# Use the AT&T 8525

## Send a Digital Photo or Video

1. From Today screen, tap Start.
2. Tap Programs.
3. Tap Pictures and Videos.
4. Select the picture or video you want to send.
5. Select Send.
6. Select the email account you wish to use (if you have set up an email account) or MMS.
  - a. If you chose an email account, enter the email address and a subject and tap Send.
  - b. If you chose MMS, you can select a contact from your contact list by tapping To or you can enter a mobile number and a subject and tap Send.



Steps?  
6

Takes?  
1 minute

# Use the AT&T 8525

## Play Music on Your Phone

### AT&T Music

AT&T Music provides the ultimate music experience with the push of the music button. Listen to your favorite music, watch the latest video, and stay in the know with music news and more.

- Transfer and listen to your music with the integrated Music Player.
- Purchase and load tracks from digital music stores like Napster® to your phone.
- Personalize with ringtones and Answer Tones™ under ShopMusic.
- Instantly ID the title and artist of a song with MusicID.
- Stream dozens of commercial free XM music stations with Streaming Music.

From the Home screen, press Start > AT&T Music. Highlight the application you wish to choose and press OK.

**Note:** If you are downloading 50 or more songs to your handheld, it will most likely time-out. To correct this, check out the FAQs at [www.america.htc.com](http://www.america.htc.com) under Support.



## Transferring Music

To play a song, first copy some music to your phone. To copy the song to your phone, you will need the following:

- Music on your PC in one of these formats: MP3, WMA, AAC.
- A microSD™ card is preferable to copy songs to your phone for extra storage (32MB or larger is recommended).
- Microsoft® ActiveSync® software loaded onto your PC. This is included in your CD that came with your phone. Go to the Sync Contacts, Calendar, Email and More section for instructions on how to install ActiveSync. When the Sync Setup Wizard opens, click Cancel.

You are now ready to transfer music to your phone.

- Connect the phone to the PC via the USB Cable.
- On the PC, open Windows Media Player and click on the Sync tab.
- Drag the MP3 or other music files you want to load on your phone to the Sync list.

You can move MP3, WMA, GCP, M4A, AWB, AMR, MID, MIDI, and RMI music files from your PC.

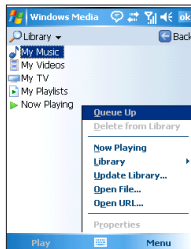
- Click on Start Sync and the music files will be loaded onto your phone.

# Use the AT&T 8525

## Play Music on Your Phone

To play music on your phone

1. Press Start > AT&T Music > Music Player.
2. Press Menu, select Library.
3. Select Menu, Update Library.  
Click Done once the library has been updated.
4. Select My Music, All Music, scroll to the song you want to play, press Play.



**Note:** The number of files you can store depends on the size and format options of the microSD.

4. Select the clip you want to play and press OK.

## Cellular Video

Cellular Video brings your phone to life. Watch news, sports, weather, and entertainment clips via AT&T's high-speed data network while on the go.

1. From Today screen, select Programs.
2. Select Cellular Video to connect.
3. Once connected, select the program options you wish to view and press OK.

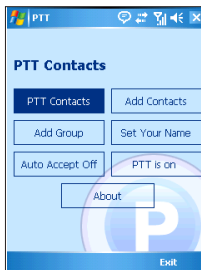
## Push to Talk

### Set up Push to Talk

Your phone offers an exciting new Push to Talk (PTT) service. The first step in using the Push to Talk (PTT) service is initializing the phone.

1. Press the PTT button on the left side of the handheld.
2. Click Yes when asked if you want to initialize PTT.
3. Type a name that is up to 20 characters (this will be your PTT user name) and click OK.

On the Today screen, select Start > Programs > Push to Talk. The bottom right button of the PTT Menu screen should read PTT is on.



# Use the AT&T 8525

## Add a Push to Talk contact

After initializing PTT, you must add individuals or groups to your PTT contact list before you can place a PTT call. Individuals and group members must subscribe to the AT&T PTT service.

1. On the Today screen, click Start > Programs > Push to Talk.
2. On the PTT Menu screen, click Add Contacts.
3. You may now enter the new contact's name and wireless number. Enter the number, press OK.
4. The phone will now send the invitation to your new contact. You will see an icon while the invitation is in progress.



## Make a Push to Talk call

The Push to Talk feature allows you to talk to friends who have the same feature on their phones.

1. Press the PTT Key located on the left side of the phone.
2. The PTT Contacts Screen will appear. Use the navigation keys to highlight the contact you would like to reach.
3. Press and hold the PTT Key to establish a connection.
4. A moment later, your phone will sound a beep. You may begin talking. When the connection is established, your screen will change to include a timer for the duration of your connection.
5. Hold the key down while speaking and release it when you are not.
6. To end a PTT session, press the End Key.  
You will be automatically disconnected if the call has no activity for 30 seconds.



# Tips and Tricks

## Set an MP3 song as your ringtone

1. Save the MP3 file to the device's "My Documents" folder or microSD™ memory card.
2. Go to Start > Settings > Personal tab > "Sounds and Notifications" and the MP3 will be available for selection as a ringtone.

## Assign a ringtone to a contact

1. Go to "Contacts" from the Today Screen (bottom-right)
2. Open a contact.
3. Press Menu > "Edit".
4. Scroll down and press the "Ring Tone" field
5. Select the desired ringtone.

## Assign a picture to a contact

1. Go to "Contacts" from the Today Screen (bottom-right)
2. Open a contact
3. Press Menu > "Edit"
4. Press on the "Picture" field
5. Select the desired picture

## OR

1. Go to Start > Programs > "Pictures and Videos".
2. Select the picture you want to assign.
3. Press Menu > Save > "Save to Contact..."
4. Select the desired contact.

### Add / remove items from your Today screen

1. Go to Start > Settings > Personal tab > Today" icon.
2. Press the "Items" tab on the bottom of the screen.
3. Select / deselect the items you want displayed.
4. Change the order of appearance by selecting the item and "Move up / down".

### Change your background picture

1. Go to Start > Settings > Personal Tab > Today" icon.
2. Press the "Appearance" tab on the bottom of the screen.
3. Check the "Use this picture as the background" box.
4. Press the "Browse" button and search for your desired picture.
5. Select the desired picture.

### Modify your date / time settings

1. Go to Start > Settings > System tab > "Clock and Alarms" icon.
2. Press the "Time" tab on the bottom of the screen.
3. Select "Home" or "Visiting" profiles.
4. Select the appropriate time zone, time, and date.

### Assign programs to device shortcut buttons

1. Go to Start > Settings > Personal tab > "Buttons" icon
2. Press the "Program Buttons" tab on the bottom of the screen
3. "Select a button" you wish to assign a program to
4. "Assign a program" to the selected button from the drop down menu

# Frequently Asked Questions

## **Why does my AT&T 8525 not turn on?**

The power might be off or the battery might not be charged. See 'Charge the Battery' in the User Manual for more information.

## **How do I turn on/off Bluetooth®?**

Press the Comm Manager button on the upper right side of your AT&T 8525. Tap the Bluetooth icon to turn Bluetooth on/off.

## **My battery seems to get used up very quickly. What can I do?**

There are a few things you can do to conserve battery power.

1. Turn off the Bluetooth feature and WiFi when not in use in Comm Manager.
2. Adjust backlight settings to shorten lighting duration.
3. Lower key tone volumes and turn off any unwanted sound notifications.
4. Turn on "Hibernate" mode by tapping the power button when phone is not in use.
5. Turn on keypad or device lock to prevent accidental activation of device and backlight

## **Why am I not receiving a signal on my phone?**

You may be outside of a coverage area or your phone could be in flight mode. To turn on/off flight mode, tap the signal icon on the top of the screen. Then press Turn on flight mode/ Turn off flight mode. To determine if you are in a coverage area you can check the AT&T Coverage Map or contact AT&T at 1-866-246-4852.



## How much data can I store on the phone?

The system memory is limited, with up to 51MB for user storage. You can store pictures, music and videos on a storage card for additional storage.

## Why does the display go blank on my phone?

By default, the backlight will shut off if the phone is unused for 30 seconds. To change this interval, tap **Start > Settings > System > Backlight**. Here you can modify the Backlight time out period when the phone is using battery power or AC power.

## How can I set up my Hotmail account?









































There is a Pocket MSN program that will automatically configure your device.

1. Go to Start > Programs > Pocket MSN.
2. Select MSN Hotmail.
3. Enter your email address and password; press Sign In.
4. Once auto-configuration has completed, you will be directed to your Inbox.

## My phone charges very slowly. How long does it normally take to fully charge?

Initial charges should be 5-6 hours. If the phone is charging slowly, make sure you are using the AC adapter and not the USB cable to charge your phone.

## Status Indicators

Icon	Description	Icon	Description	Icon	Description
	New e-mail, MMS, and text messages.		Searching for phone service		Wireless network(s) detected
	New voice mail		3G UMTS network available		Connected to wireless network
	There are more notifications. Tap the icon to view all.		UMTS connecting		Synchronizing via Wi-Fi
	Speakerphone on		UMTS in use		Ringer in vibration mode
	Dialing while no SIM card is inserted		GPRS available		Sound on
	Voice call in progress		GPRS connecting		Sound off
	Calls are forwarded		GPRS in use		Alarm
	Call on hold		Roaming		No SIM card inserted
	Missed call		Connection is active		Comm Manager
	Maximum signal strength.		Connection is not active		Battery is fully charged
	No signal		Synchronization in progress		Battery power is very low
	Phone is turned off		Synchronization error		Battery charging
	No phone service		Wi-Fi function enabled, but device not connected to a wireless network		Device is locked
					Device is unlocked



Learn more online:

[www.cingular.com/tutorials/cingular8525](http://www.cingular.com/tutorials/cingular8525)



**at&t**

Your world. Delivered.

The Bluetooth wordmark and logos are owned by the Bluetooth SIG, Inc. and any use of such marks by Cingular Wireless is under license. Microsoft, Windows, Windows Mobile, ActiveSync, Excel, Internet Explorer, MSN, Outlook, PowerPoint, Windows Media and Word are registered trademarks or trademarks of Microsoft Corporation in the United States and/or other countries. The GSM letter mark is a trademark of the GSM Association.

**AT&T 8525 Handheld with Windows Mobile® April 2007 Getting Started Guide**

©2007 AT&T Knowledge Ventures. All rights reserved.

Subsidiaries and affiliates of AT&T Inc. provide products and services under the AT&T brand.