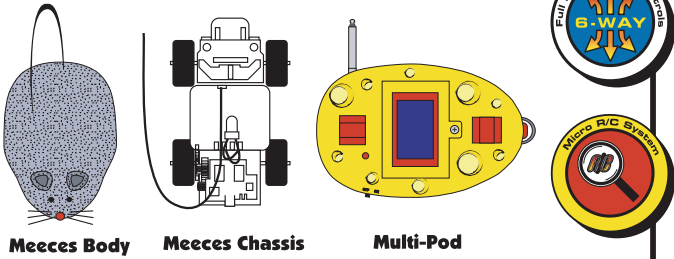
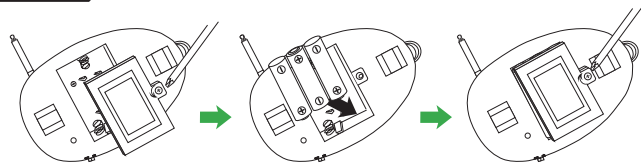


Thank you for purchasing this exciting product.
For best results, please read these instructions carefully.

Package contains:



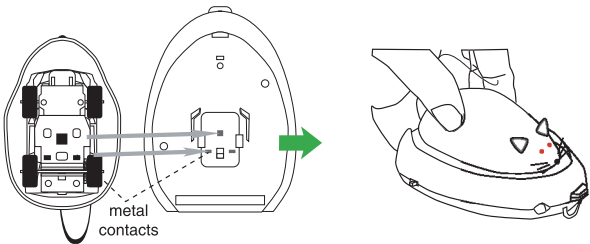
STEP 1 Insert Batteries into Multi-Pod



Use a screwdriver to open the battery cover.
Insert 3 standard AAA batteries into the pod as shown.
Then, replace cover and locking screw.

STEP 2 Charge for 45 seconds

Charge the mouse 2 times before first use.



Turn the Multi-Pod "On" and fit the mouse on the charging station.
The bright charging LED will turn on for 45 seconds.
When the LED begins to dim, it's time to replace the batteries.

To contact customer service, send email to customerservice@atomic toys.com, Or, call (858) 874-8699

The manufacturer is not responsible for any radio or TV interference caused by unauthorized modifications to this equipment.
Modifications not authorized by the manufacturer may void the users authority to operate this device

Do not mix old and new batteries

Do not mix alkaline, standard (carbon-zinc) or rechargeable (nickel-cadmium) batteries.



Actual product may differ from images depicted. We reserve the right to modify product at any time for safety and general improvements in quality and value.

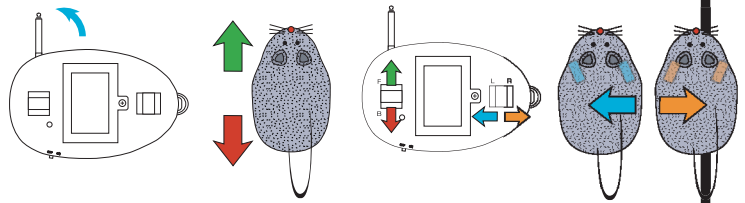
"Meecees" is a registered trademark of Atomic Toys, LLC.
Package, toy and product design © Atomic Toys, LLC.
Distributed by Atomic Toys, LLC, San Diego, CA 92103. Made in China.
All rights reserved.

NOTE: This equipment has been tested and found to comply with the limits for a Class B digital device, pursuant to Part 15 of the FCC Rules. These limits are designed to provide reasonable protection against harmful interference in a residential installation. This equipment generates, uses and can radiate radio frequency energy and, if not installed and used in accordance with the instructions, may cause harmful interference to radio or television reception, which can be determined by turning the equipment off and on. The user is encouraged to try to correct the interference by one or more of the following measures:
- Reorient or relocate the receiving antenna.
- Increase the separation between the equipment and receiver.
- Connect the equipment into an outlet on a circuit different from that to which the receiver is connected.
- Consult the dealer or an experienced radio/TV technician for help.

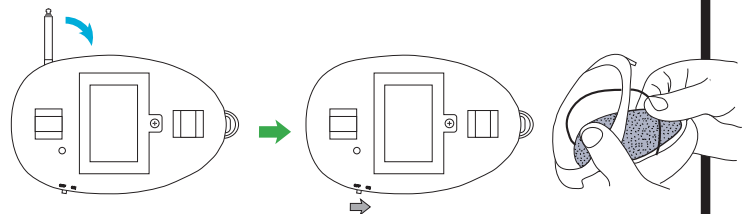
WWW.ATOMIC TOYS.COM



STEP 3 Operating the Controls

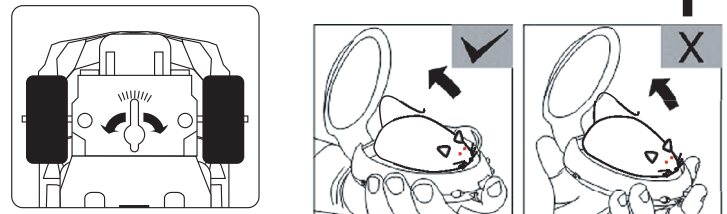


Switch on Multi-Pod and fully extend the antenna.
The left button controls forward and backward movement.
The right button controls the left and right direction.



After playing, make sure to switch the control to the "Off" position.
Place the mouse into the Multi-Pod and close the cover.
Be careful not to let the tail (antenna) get stuck in the opening.

To avoid leakage, it is not recommended to keep batteries in the unit for an extended period of time.



If the car doesn't travel straight, adjust the trim underneath.

Open this way to avoid dropping the unit.

Troubleshooting

	PROBLEM	SOLUTIONS
Car does not move	A) Motor or motor bracket has come loose or unseated. B) Not enough energy in AAA batteries. C) Forgot to switch Multi-Pod on. D) Car out of range. E) Rechargeable battery is old.	<ul style="list-style-type: none"> • Push motor in from gear side • Ensure that bracket is in place • Insert Fresh Batteries • Switch on control unit and verify charge in car. • Play with unit at a closer distance. • Replace the Ni-Mh battery.
Car not running smoothly	A) Something inside wheels B) The trim is not set in the middle C) Running on carpet or cloth.	<ul style="list-style-type: none"> • Use a small pin to remove obstruction. • Center the trim underneath car. • Car runs much better on smooth surfaces.
Car moves by itself	A) Some materials can cause reflex action. B) Other devices on the same frequency.	<ul style="list-style-type: none"> • Move to another location • Avoid playing near machinery. They could be sending interfering signals.

For more detailed Technical Support visit:

www.atomic toys.com/meecees_tech.html