

User manual

ADR42R NVR



Safety Information

Safety Precautions

- Do not touch live electrical parts. Electric shock can be avoided. Follow the recommended practices listed below. Faulty installation, improper grounding, and incorrect operation and maintenance of electrical equipment are always sources of danger.
- Do not try to install equipment outdoor, during strong wind and rain.
- Do not install or remove equipment outdoor, when raining.
- Do not try to install or operate any equipment, during a thunderstorm.
- Always ground all electrical equipment and the work platform. Prevent accidental electrical shocks. Connect power source, control cabinets, and work platform to an approved electrical ground.
- Always use the correct cable size. Sustained overloading will cause cable failure and result in possible electrical shock or fire hazard. Work cable should be the same rating as the factory.
- Always wear insulated gloves while you adjust equipment. Electric power should be turned off and insulated gloves should be worn when making any equipment adjustment to assure shock protection.
- Always wear protective clothing such as long sleeve shirts while you are installing or removing equipment.
- Always wear high, snug fitting shoes.
- Always wear clean clothes without grease or oil.
- Protect neighboring workers from exposure to arc radiation.
- Always wear long trousers or jeans while you are installing or removing equipment.
- Always wear safety helmet or hard head and safety shoes before work.
- Always keep the equipment in dry places.
- Always wear safety harnesses/belt while you work in high places.
- Always wear dry clothing and avoid moisture and water.
- Always wear Public Safety Vest, while you work at night.
- Make sure all electrical connections are tight, clean, and dry.
- Make sure that you are well insulated to eliminate electric static charge.
- Always wear dry gloves, rubber-soled shoes, or stand on a dry board or platform.
- Always follow recognized safety standards.
- Always wear correct eye, ear, and body protection.
- Always have second person on-site, while you work in dark, poor ventilation, or high places.
- Make sure that you are well protected against arc flashes, mechanical injury, or other mishaps.
- Make sure that the polarity of wire is correct before installing equipment.
- Always handle equipment with care.
- Do not block the ventilation of equipment.
- Do not put the magnetic parts around the equipment.
- Do not put the objects on top of the equipment.

FCC Statement

Changes or modifications not expressly approved by the party responsible for compliance could void the user's authority to operate the equipment. This equipment has been tested and found to comply with the limits for a Class B digital device, pursuant to Part 15 of the FCC Rules. These limits are designed to provide reasonable protection against harmful interference in a residential installation. This equipment generates uses and can radiate radio frequency energy and, if not installed and used in accordance with the instructions, may cause harmful interference to radio communications. However, there is no guarantee that interference will not occur in a particular installation. If this equipment does cause harmful interference to radio or television reception, which can be determined by turning the equipment off and on, the user is encouraged to try to correct the interference by one or more of the following measures:

- Reorient or relocate the receiving antenna.
- Increase the separation between the equipment and receiver.
- Connect the equipment into an outlet on a circuit different from that to which the receiver is connected.

-- Consult the dealer or an experienced radio/TV technician for help

This device complies with part 15 of the FCC rules. Operation is subject to the following two conditions (1) this device may not cause harmful interference, and (2) this device must accept any interference received, including interference that may cause undesired operation.

The distance between the product and body is more than 20cm

Getting Started

1. Optional Hard Drive Installation (required for recording)

If the NVR does not have a Hard Drive, for first time use please install an internal SATA II or III 3.5" hard drive with steps below:

1. Remove the NVR screws of NVR case
2. Connect the SATA HDD cable and power line
3. Attach the hard drive to the bottom of the NVR as shown below
4. Close the cover and replace cabinet screws



2. Powering up the NVR



1. Power up the NVR using the provided 3 Amp power adapter within the package and plug it into the DV12V port on back of the device
2. Connect the USB mouse next to the power port on the back of the device.
3. Connect the Cat5e (LAN) cable to the NVR and plug the other end to the internet router or modem for internet connection. (This step is require for remote viewing)

3. NVR Setup Wizard



1. Once you have connected the power adapter wait for the system to start up. Right-click mouse and select setup wizard. When you see the log-in screen, click OK and setup wizard will appear.
2. You may scan the QR code using a QR code reader to download a mobile app to your phone—or skip to the next step and download the application when finished with the setup.
4. Next you will be asked for an internet connection. If you have already connected the cat5e cable, network status will be shown as "Healthy". If you have not connected the cat5e cable, you may do so now and click "auto config" to refresh the status. (This step is required for remote viewing)



5. Next on HDD setup check the status of the hard drive. If it shows as "Formatted" then it is ready to be used. If not, select drive and click "Format." Click "Done" to finish the setup.

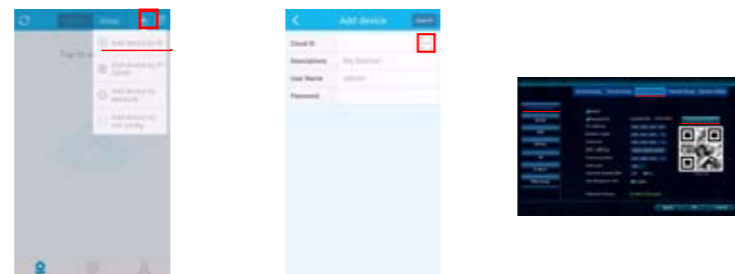
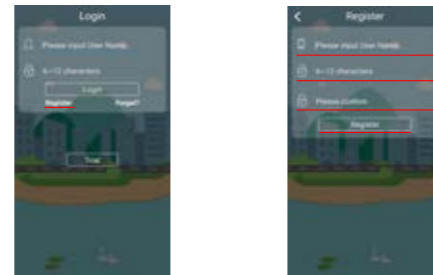


If you are having an issue connecting to the internet please double check the cat5e cable and make sure it is plugged to the router or modem correctly.

5. Smartphone Application

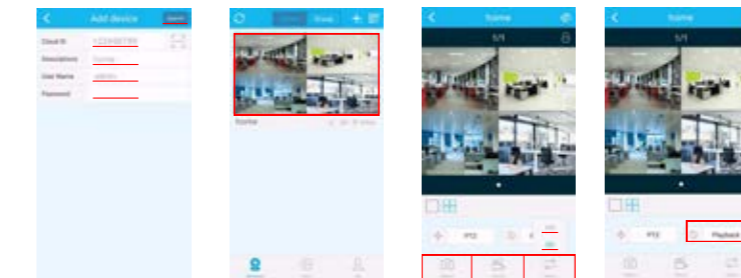


1. If you have not yet downloaded the applications you may do so now. Please go to the "App Store" or "Play Store" and search for "IP PRO" and install.
2. Once the installation is finished, open the IP PRO and touch "Register" to make a new account. (If you have already registered please log in and skip to step 4)
3. Please input a user name and password (6-12 characters) and type the password one more time to confirm. Once you have finished, touch register and you will get a pop-up message to verify email. Please enter your email and touch "verify."



4. When you have logged in touch the "+" on top right and "Add device by ID"
5. Touch the icon to start the QR scanner.
6. You can find the QR code under (System setup > Network setup > show QR code). Now scan the QR code using the app scanner and it will automatically input the "Cloud ID" for you.

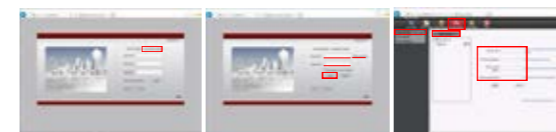
6. Web Viewer



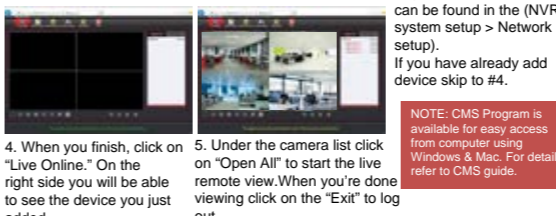
7. On the descriptions you can leave it as blank or enter the location information. (ex: home, office) Default User name: admin Password: (blank) Now touch submit to finish.
8. Now you can see the newly added list on the main page. Now you can touch the image and start the live view.
9. Within the live view you can choose the video quality by touch "Stream" and choose between "SD" (low quality) or "HD" (High quality). You can also take a snap shot or record short clips and save in the phone to view them later.
10. You can also view recorded video remotely using the "playback" button.



11. You can select the channel you want to play back using the "CH" icon on bottom right and select the channel. Once you have selected the channel, time line will appear and you can slide left-to-right and select the time frame.



1. Using the internet explorer go to "www.e-seenet.com". Once you are at the log-in screen click on "Username login."
2. If you have not already made an account. click on "New account." to make a new account. If you have made an account using the smartphone application use the same ID/Password to log in to the website.
3. Once you log in it will ask you to add device. If it does not show automatically, go to (system setup > setup wizard). Now click on "Add device" and enter in all the required information, which can be found in the (NVR system setup > Network setup). If you have already add device skip to #4.



4. When you finish, click on "Live Online." On the right side you will be able to see the device you just added.
5. Under the camera list click on "Open All" to start the live remote view. When you're done viewing click on the "Exit" to log out.

System Menu

7. Menu Bar

Use the mouse and right click anywhere in the screen to bring up the menu bar

	Split screen	Choose between x1 or x4 view
	Video Manage	Sync or add new IP camera
	System setup	Configure NVR system setting
	Video playback	Quick play back of 5, 10, 30 min or manual search
	Video Backup	Backup recorded file to USB Flash Drive
	Color Adjust	Adjust hue, brightness, saturation, and contrast
	PTZ Control	Bring up digital PTZ controller for PTZ cameras (PTZ camera not included)
	Manual Record	Force the system to record 24/7
	Volume	N/A
	Setup Wizard	Step by step setup guide
	System Mode	N/A
	Fast Network	Quick setup for network connection
	Wifi Add	NVR Wifi information
	Exit System	Log out, Reboot, Close Screen output, and Shutdown

8. Video Playback



1. Right click on the mouse to bring up the main menu.
2. Click "Video Playback" > "Manual Search"
3. Select the video channel you like to playback
4. Select the record mode (To search everything make sure to check all 4 box)
5. Select date and time and click search
6. Once you have click search it will show recorded sections on the timeline.
7. Click and drag the time bar or select using the time bar left of the Playback button.
8. Once you have selected the time click "Playback" to start
9. When your done click "ESC" to exit playback

Video Playback Control

	Rewind 1 frame
	Play 1 frame
	Play
	Pause
	Fast Forward x2, x4, x8, x16, x32

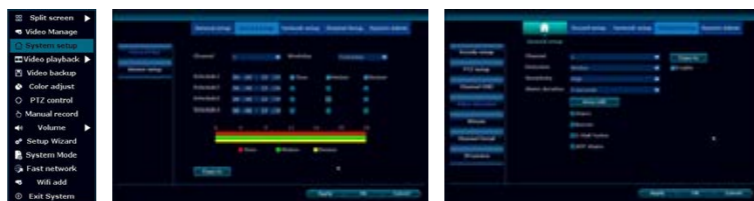
9. Video Backup



1. Right click on the mouse to bring up the main menu.
2. Click "Video backup"
3. First select the video channel you want to backup
4. Second select the "Record mode"
5. Third select the date and time you like to backup and click "Search"
6. Once you have click search, recorded date list will show up
7. Select the file you need to backup by checking the box on the right
8. Make sure you have USB Flash drive installed and Click "Video Backup"

NOTE Support up to 32Gb Flash drive : Recording files are divided by one hour each

10. Record Setup



1. Right click on the mouse to bring up the main menu.
2. Click "System setup"
3. Click "Record setup"
4. On the "Record Plan" you set a recording schedule by Time, Motion, Sensor, (Time: record continually / Motion: record when motion is detected / Sensor: N/A)
5. Once you have completed the settings for one of the cameras, you can copy the same setting to other cameras by clicking "Copy to" or you can setup each camera manually
6. For motion record you can also configure the sensitivity and area for each camera.
7. Click "Channel Setup" > "Video detection"
8. Here you can change the setting for sensitivity and area for motion detect recording.
(Lowest: detects big motion to start the recording)
(Highest: detects small motion to start the recording)
9. Click "Area edit" to select the areas you want the motions to be detected. (All the area are selected by default)
10. Once you have finish click "OK" to save the setting

11. Generate Esee ID



1. Right click on the mouse to bring up the main menu.
2. Click "System setup"
3. Click "Network setup"
4. Check the "DHCP" to get IP address automatically.
5. Once you have checked the "DHCP," click "Apply" to save the setting
6. If you are connected, "Network Status" will display "Healthy Network"
7. It will now display your Esee ID next to "ESee(P2P)", you can also click on "Show QR Code" to display the QR Code.
8. When you are done, click OK to save the setting and exit

NOTE: Esee ID is a unique ID for each NVR system. This ID is required to view remotely over the internet. Please do not share this information with other people.

12. Add & Edit User Account



1. Right click on the mouse to bring up the main menu.
2. Click "System setup"
3. Click "System Admin"
4. Click "User"
5. To add a new user click "Add user"
6. Type in user name, password, and select the permissions that user can access then click "OK"
7. To edit user, select the user you would like to edit and click "Edit user." Edit the information you need and click "OK" to save
8. Once you are done with "Add & Edit user" click "OK" to save and exit

NOTE: Admin account does not have a default password, so please add a new password by clicking "admin" and "Set Password". The old password is (blank) by default, so just type in your new password and click "OK" to save.

15. Adding Camera By Matching Code



1. Right-click the mouse to bring up the main menu.
2. Click "Video Manage"
3. Use the LAN (CAT5) cable that came with the package to connect the "Camera" to the "NVR", and power up the connected camera.
4. Once you have the camera powered up and connected, click "Refresh" (If nothing is showing up on the list, change the "Protocol" to "N1" and click "Refresh")
5. As soon as the refresh finishes, you will get a list of cameras with the IP address of "172.20.14.xxx"
6. Select the camera you want to add and click "Match Code". This process will take about 30-60 sec.
7. Once match code is finished, you can now unplug the LAN (CAT5) cable and it will be connected over wireless network.

Note: If there are already 4 cameras on "Added device" you need to delete one of the cameras to add a new camera.

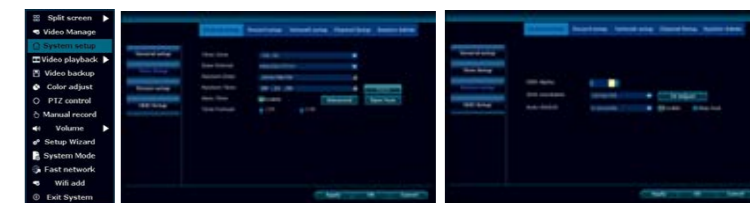
16. NVR Spec

Operation System	Embedded Linux OS	
NVR Channel	4 Channel	
Video Output	HDMI Output	1024x768, 1366x768, 1440x900, 1920x1080p
Video Resolution	720P	
Synch-Playback	4 Channel	
Video Control	Video / Capture mode	Manual / Time / Motion
	Playback mode	Real time / Manual / Motion
	Backup	USB Backup
HDD	Interface	1x SATA
	Max Capacity	4 TB Hard Drive
	Network Interface	RJ45 10M/100M (LAN)
External Interface	USB interface	USB 2.0 1x Front, 1x Back
Network Control	Protocol	UPnP (Plug & Play), SMTP (Email Notification), PPPoE (dial-up), DHCP (Automatically Obtain an IP Address), ETC...
Power	DC 12V 3A	
Consumption (without HDD)	<5 W	
Working Temperature	-10c ~ 55c	
Working Humidity	10% ~ 90%	
Size	258 x 210 x 42mm	
Weight (without HDD)	< 1Kg	

17. Camera Spec

Mega Pixel	1.0MP
Operation System	Embedded Linux
Image Sensor	1/4" Progressive Scan Sensor
S/N Ratio	> 39.1dB
Resolution	1280 x 720 (16:9) High Definition
Minimum Illumination	Color: 0.1 Lux, B/W: 0.1 Lux
OSD	Date, Time, Title
White Balance	Auto
Day & Night	Auto / Color / BW
3D-DNR	Auto
Mirror / Flip	On / Off
Privacy Regional Shelter	4 Zone Selectable
Stream	Dual Stream 1280 x 720 @15fps 640 x 360 @15fps
Anti-thunder Level	Standard IEC61000-4-5
Power	DC12V 1A
Consumption	<6W
Interface	RJ45 / Wifi 802.11b/g/n
Working Temperature / Humidity	-10c ~ 50c / 30% ~ 80% RH
Storage Temperature / Humidity	-20c ~ 60c / 20% ~ 90% RH
Size	205 x 70 x 55mm
Weight	500g

13. Date / Time Setup



1. Right click the mouse to bring up the main menu.
2. Click "System setup" > "General Setup" > "Time Setup"
3. If you have the NVR connected to the internet you may check the "Sync Time" to automatically sync the correct time.
4. If you do not want to sync time or have an issue with the internet you can uncheck "Sync Time" and manually set up the time
5. Select the "Time Zone" > "Date Format" > "System Date" > "System Time"
6. Once you have it set click "OK" to save and exit

14. Display Setup

1. Right click on the mouse to bring up the main menu.
2. Click "System setup" > "General Setup" > "Screen Setup"
3. If you are using a built-in screen we recommend using screen resolution of "1024x768"
4. If you are using an external monitor using the HDMI, you may change the resolution depending on the resolution supported by the monitor.
5. Once you have the right resolution and everything is displaying correctly on the screen click "OK" to save and exit

Note: If you set up the "VGA resolution" to a higher resolution for built-in monitor, the screen will get cut off or may not be adjust correctly. In cases like this just go back to the "Screen setup" and change the "VGA resolution" back to 1024x768, and click "OK" to save and exit.

18. Warranty Information

The system comes with 90-day manufacturer's warranty.

Warranty will be void for following issues:

1. Accident, Negligence, Disaster, Mis-Operation.
2. Damage caused by weather due to not sealing the wire connection or power adapter.
3. Damage caused by operating the NVR in high or low temperature.
4. Getting system maintained by 3rd party technician.
5. Exchange of 3rd party parts (Ex: Hard drive, antenna, power adapter, etc...)
6. Expiration of warranty period

19. References & Contact Information

This guide is for reference only. Slight differences may be found in the user interface. All the designs and software here are subject to change without prior written notice.

All trademarks and registered trademarks mentioned are the properties of their respective owners.

If you have any questions or concerns, please contact us at: