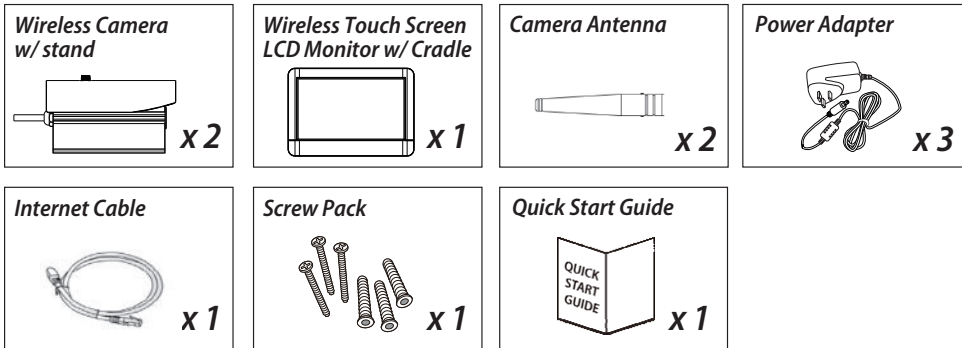


QUICK START GUIDE

KIT CONTENT :



FACTORY DEFAULT SETTING

Press and hold the reset button on the power cable for 5 seconds and the system will start the reset process. The system will restore to factory default.

FCC Compliance Statement: This device complies with Part 15 of the FCC rules. Operation is subjected to the following two conditions: (1) this device may not cause harmful interference, and (2) this device must accept any interference received, including interference that may cause undesired operation.

CE Products with CE Marking comply with EMC Directive (2004/108/EC); Low Voltage Directive (73/23/EEC); R&TTE (1999/5/EC); ROHS Directive (2011/65/EU) issued by the Commission of the European Community. Compliance with these directives implies conformity to the following European Norms:
EMC: EN 301 489
LVD: EN 60950
Radio: EN 300 328

If the camera system no longer functions or can no longer be repaired, it must be disposed of according to the valid statutory regulations. Disposal of spent batteries/accumulators:
You are required by law (Battery Ordinance) to return all spent batteries and accumulators. Disposing of spent batteries/accumulators with common household waste is prohibited! Batteries/accumulators that contain hazardous substances are marked with the symbols on the side. These symbols indicate that it is prohibited to dispose of these batteries/accumulators in the household waste. The abbreviations for the respective heavy metals are: Cd=cadmium, Hg=mercury, Pb=lead. You can return spent batteries and accumulators that can no longer be charged to the designated collection points in your community, outlets or wherever batteries or accumulators are sold. Following these instructions will allow you to fulfill the legal requirements and contribute to the protection of our environment!

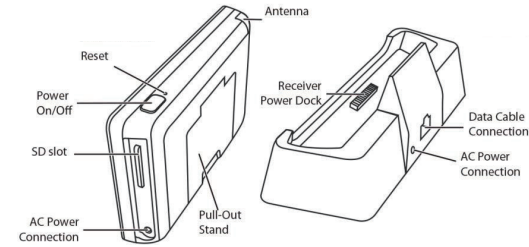
Changes or modifications not expressly approved by the party responsible for compliance could void the user's authority to operate the equipment.

The antenna(s) used for this transmitter must be installed to provide a separation distance of at least 20 cm from all persons and must not be co-located or operating in conjunction with any other antenna or transmitter.

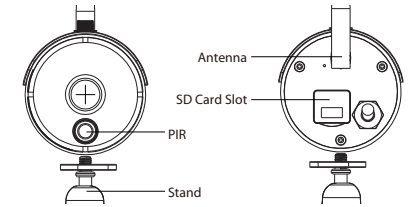
This device complies with Industry Canada licence-exempt RSS standard(s). Operation is subject to the following two conditions: (1) this device may not cause interference, and (2) this device must accept any interference, including interference that may cause undesired operation of the device.
Le présent appareil est conforme aux CNR d'Industrie Canada applicables aux appareils radio exempts de licence. L'exploitation est autorisée aux deux conditions suivantes : (1) l'appareil ne doit pas produire de brouillage, et (2) l'utilisateur de l'appareil doit accepter tout brouillage radioélectrique subi, même si le brouillage est susceptible d'en compromettre le fonctionnement.
L'antenne (s) utilisé pour cet émetteur doit être installé pour fournir une distance de séparation d'au moins 20 cm de toute personne et ne doit pas être co-localisées ou opérant dans conjointement avec une autre antenne ou émetteur.

GETTING TO KNOW THE MONITOR AND CAMERA

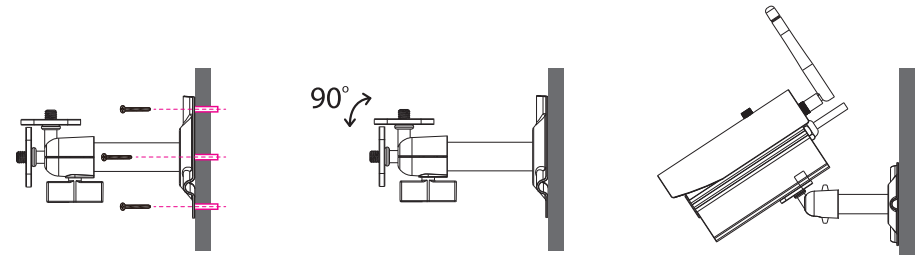
Receiver (back/side)



Camera



CAMERA INSTALLATION

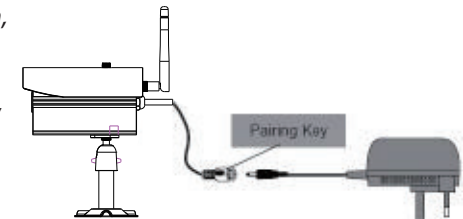


- 1 Secure the camera stand on a stable surface
- 2 Loosen up the thumb screw
- 3 Adjust proper view angle, then secure the joint with T-bolt.

Pairing the Camera to Receiver (optional)

The system supports up to 4 wireless cameras. If you are adding another camera to the system, please ensure its channel is set to a different channel to the existing camera(s).

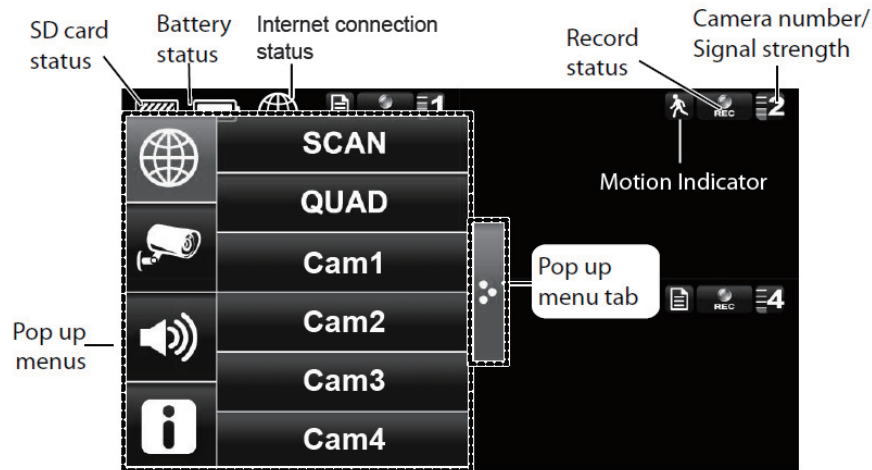
1. Go to the Main Menu > Camera Setup (specify channel 1/2/3/4) > Press the Camera Pairing button
2. Press the pairing key ONCE on the camera



Setting the Camera Channel (optional)

The wireless camera is preset to channel 1 by default. You can also use the steps above to change the camera channel if necessary.

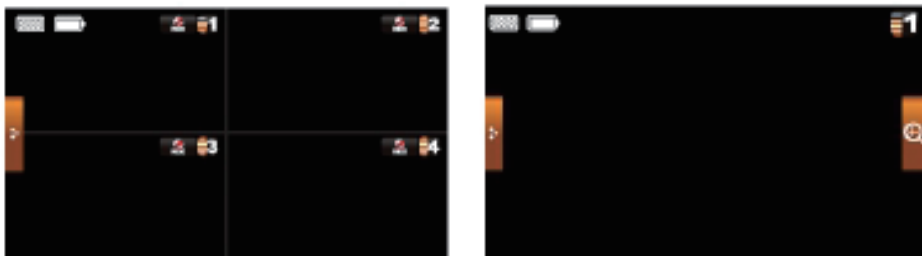
OPERATION SCREEN



	Camera Mode		Battery Capacity		Connecting to the Internet		Scheduled
	Volume		Camera Number		Internet Connected		Pop Up Menu Tab
	System Settings		Connecting to the Record Status		Remote View		No SD Card Indicator
	SD Capacity		Record Status		Motion		Zoom

Live Screen Displays

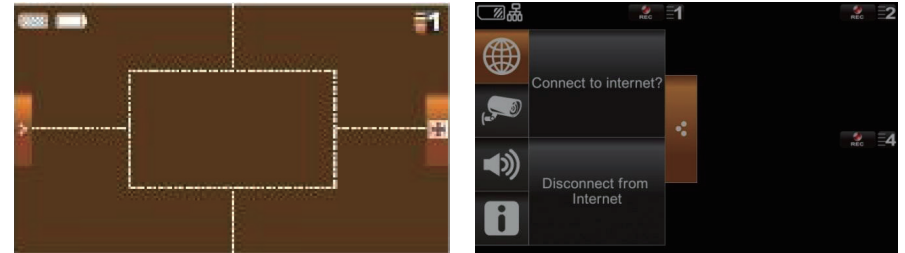
The Live screen displays in 2 views - Quad View or Full View. Quad View displays the images in 4 quadrants (only display camera that is ON). Tap a quadrant to display single camera view / full view. Tap on that image again to return to Quad View.



Zoom Feature

To zoom into a particular area,

1. Go to full view, then tap to activate zoom mode.
2. Select the zone by tapping the zone area to view zoom in screen.



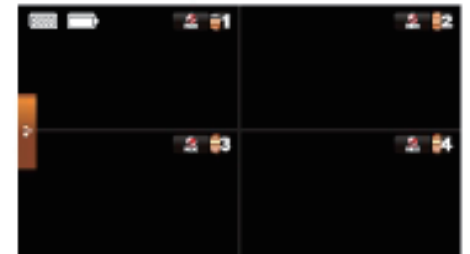
Main Screen

From the pop-up menu, tap the following icons



Manual Recording

1. On the Live screen, tap for the camera to begin recording.
2. Tap it again to stop recording.



Playback the Recorded Video

From the pop-up menu, tap the following icons

