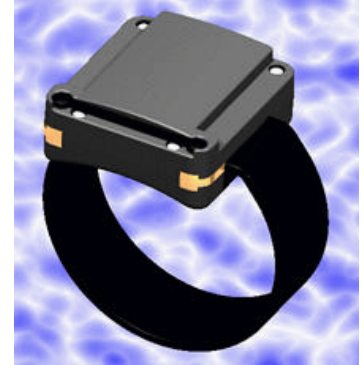


10. Installation and Use

10.1 The Bracelet

The offender is fitted with a tamper resistant bracelet transmitter that weighs a little more than 6 ounces. It is attached to a pre-sized strap that comes in various sizes to fit all offenders and is ergonomically designed to be unobtrusive. The bracelet may be worn under socks or hose and reports conditions such as **Bracelet Gone** (from the vicinity of the Portable Tracking Device), **Bracelet Strap** (removed or cut) and **Battery Status**.



The bracelet transmitter is a wireless electronic tether to the Portable Tracking Device. Bracelets are assigned to PTD's through PCE (Pro Tech Client Enrollment). Each bracelet transmits its own unique encrypted RF signal. RF bracelet transmissions from other manufacturers cannot be recognized by the PTD. Once a bracelet is assigned to a PTD, the PTD will only recognize the signal from that bracelet.

10.2 Prior to Installing the Bracelet on an Offender

- Verify the bracelet is clean and that the inside of the channels, where the strap ends are inserted on each side of the bracelet, are clean and free of dirt and oil.
- Choose a strap that will fit comfortably. A strap size should be chosen so that once installed around an offender's leg, the bracelet is not too constrictive and it is not too loose. There are four standard strap sizes, small, medium, large and extra large. Special length straps will be supplied by PRO TECH upon request. Requests for non standard strap sizes must be accompanied by a measurement of the offender's ankle. Ankles should be measured by placing a cloth tape measure around the offender's ankle at its narrowest point and reading the measurement in inches.
- Slide one end of the strap into one of the channels located on the sides of the bracelet. Ensure the strap end has been pushed into the bracelet channel completely.

10.3 Bracelet Installation



- Match bracelet serial number on the back of the bracelet case to the number on the bracelet hardware list in PCE 3. Assign that bracelet number to the offender in PCE 3.
- Place the strap around the offender's leg so that the channel openings located on the sides of the bracelet are facing down. This allows any water that may enter the channel to drain out.
- Slide the loose end of the strap into the remaining channel at the side of the bracelet. Ensure the strap end has been pushed into the bracelet channel completely.
- Align the Tamper Plug with the open holes in the bracelet case. With both hands push the Tamper Plug prongs into the open holes until you get a firm click on both sides.
- Note that a bracelet must have both channels connected to activate a PTD.
- The bracelet is now activated and transmitting.

10.4 Removing the Bracelet

- Cut the Tamper Plug spanner along the scored line, then swing the ends of the Tamper Plug spanner until they are perpendicular to the edge of the bracelet case. Slide the two pieces of the Tamper Plug out of the bracelet case.
- Slide one end of the strap out of the bracelet channel.
- Clean the bracelet with mild detergent, rinse, dry, and return to inventory.



10.5 FCC NOTICE

This device complies with Part 15 of the FCC Rules. Operation is subject to the following two conditions: (1) this device may not cause harmful interference, and (2) this device must accept any interference received, including interference that may cause undesired operation. Any changes or modifications made to this device without the express permission of the manufacturer may void the user's authority to operate this device.