



SMART[®] XT

Table of Contents:

SMART® XT - 3 -

SYSTEM OVERVIEW - 3 -

SMART® XT - 3 -

PCE - 4 -

ACTIVATING THE SMART® XT - 6 -

OFFENDER SCREEN - 7 -

OFFICER'S MENU - 8 -

RULES DEFINITIONS - 10 -

CHARGING the SMART® XT - 11 -

FCC and SAR Statement - 12 -

System Overview:

Pro Tech's SMART[®] XT is the smallest, lightest and most reliable GPS tracking unit in the industry. The SMART[®] XT is equipped with a high resolution color LCD screen that enables viewing in bright sunlight. A built-in cell phone allows Supervisors/Officers to speak directly with Offenders. Notifications include LED lights, audible beeps and vibration.

SMART[®] XT:

The SMART[®] XT works seamlessly with Pro Tech's existing SMART[®] Ware system.

Feature Highlights:

- Small scale and lightweight – Weighs only 5.5 oz
- Easily worn on the hip
- High resolution LCD screen
- Touch sensitive buttons
- Multi-tamper detection – Case, screw plugs and magnetic pouch detection
- 30-Day point storage
- Communication with Offender – Voice, text and audible/vibration notification of alerts/messages
- 1000 Geographic Rules
- Buffer Zones – Additional zone created around geographic rules.
- Collects one GPS point every minute and one every 15 seconds while in violation of a geographical rule
- 24-hour battery life, 2-hour charge
- Splash-proof – Do Not Immerse
- Multilingual menu and message display
- Supplemental tracking technologies:



- **Tower-Based Technology** – Calculates geographic position based on all known cell tower locations. Used to validate GPS position calculations and as a secondary means of tracking when GPS is not available.
- **Motion Sensor** – Prevents Offender from masking GPS and alerts the Supervising Agency when an attempt occurs.
- SMARTGlo™ Backlighting – LCD and touch buttons backlighting gradually goes from low intensity to high intensity instead of simply turning on or off.
- Internal Black Box – All events are logged to memory and accessible to Officers via PCE. Stores 7 days of events.
- External Label – Blank label pocket for agency-specific labeling.
- Self-Test - Officers can test functions on device or remotely through PCE.
- Supervision Levels - Active, Passive and Hybrid.

OFFENDER MONITORING SOFTWARE:

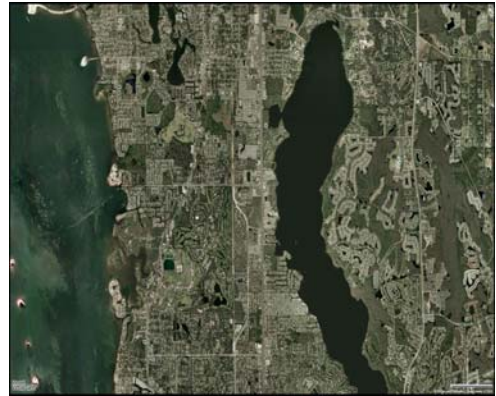
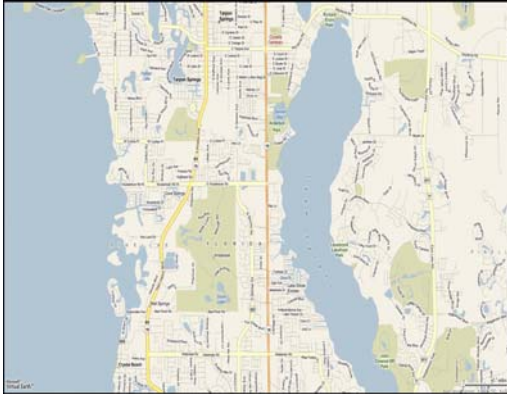
PCE: Pro Tech Client Enrollment Software

A tracking device is only part of a comprehensive system to monitor Offenders. The Pro Tech SMART® Ware system includes our 24/7 monitoring center with two offsite backup facilities, experienced support staff, redundant data center and our user-friendly Pro Tech Client Enrollment Software (PCE).

Feature Highlights:

- Enroll Offenders/Contacts on system
- Establish Rules/Curfews - Flexible Scheduling
- One-time schedule changes
- Automated and Custom Reports
- Multiple Notification Methods
- Inventory Management
- Assign/Activate Hardware
- View GPS Points
- Deactivate Hardware

Pro Tech also utilizes the latest in mapping technology. The maps utilize Microsoft Virtual Earth. With this mapping feature, Users can choose from three different views for replaying points: Roads, Aerial and Hybrid.



Roads – Aerial – Hybrid View:

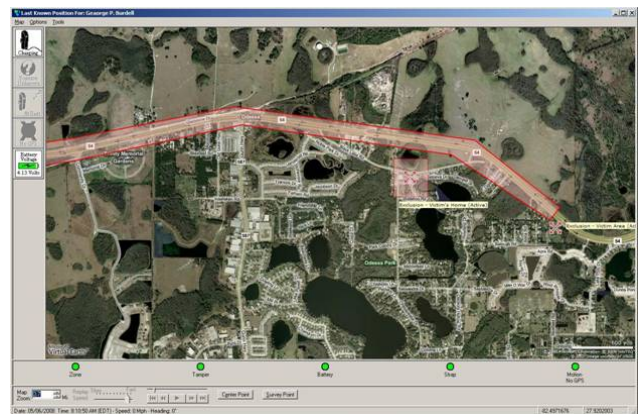
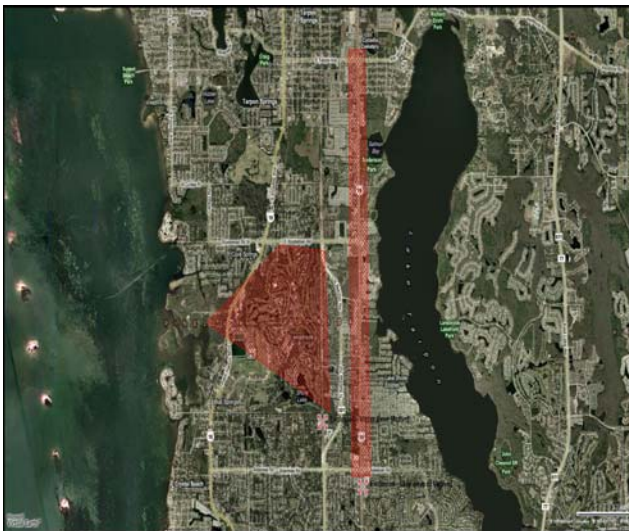
Free-Form Zones and Route Mapping:

ACTIVATING THE SMART[®] XT:

- **STEP 1** – Assign and save the equipment in the software
- **STEP 2** – Place the SMART[®] XT in the Base Unit to power up
- **STEP 3** – Select Right Button to start Activation
- **STEP 4** – Select Dialing Method

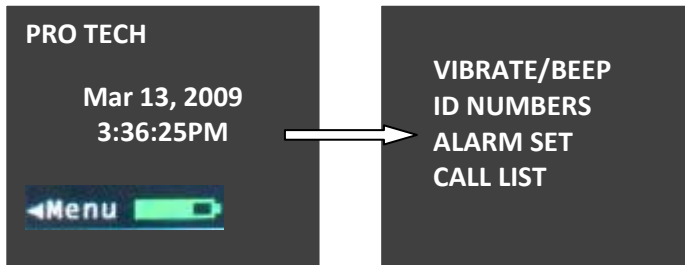
DIAL USING BU SETTINGS
DIAL USING 8
DIAL USING 9
DIAL NO PREFIX
DIAL USING WIRELESS

“**Contacting Data Center**” will be displayed on the screen. Once contact is complete, the unit will begin to search for GPS. SMART[®] XT will display “**Waiting for GPS**”. Walk the SMART[®] XT outside, holding it upright in an area with a clear view of the sky. Once GPS is acquired, the SMART[®] XT will beep and display “Activation **Successful**.”

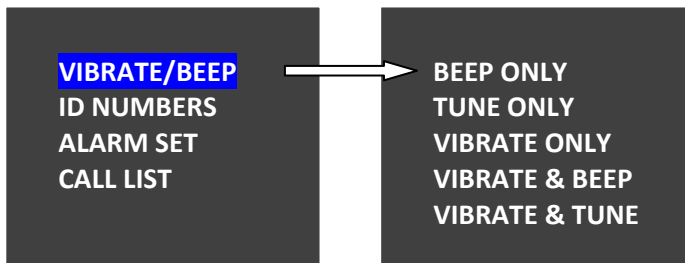


OFFENDER SCREEN:

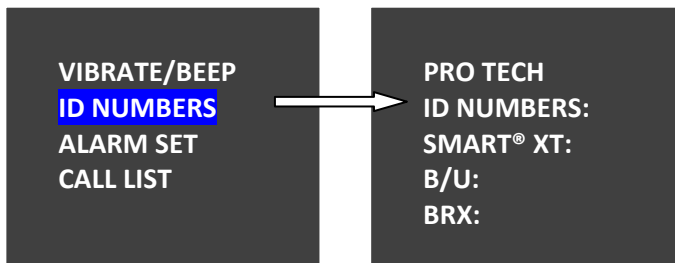
- Select Menu on the Home Screen



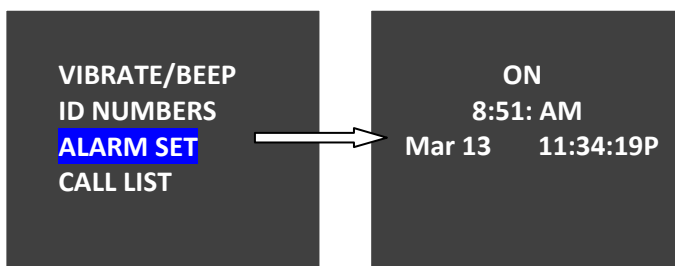
- **VIBRATE/BEEP:** Select/Change how the Offender is notified of an alert/message. If set from the Officer's Menu, it will lock the option and the Offender cannot change it.



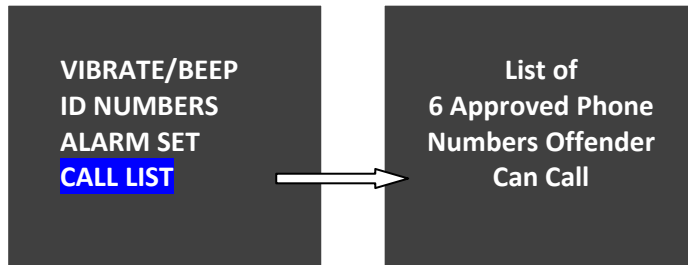
- **ID NUMBERS:** Displays the serial numbers of assigned hardware.



- **ALARM SET:** Accesses the alarm clock function.



- **CALL LIST:** Offender Call List - Displays list of pre-defined numbers the Offender can call.



ACCESSING THE OFFICER'S MENU:

- To access the Officer's Menu from an assigned SMART[®] XT, follow the below button sequence. Scroll through list.
- To access the Officer's Menu from an unassigned SMART[®] XT, place the unit in a Base Unit connected to a power source first. The SMART[®] XT will beep then display "SMART[®] XT" when ready. To access the Officer's Menu, follow the button sequence below.

Sequence - 1/1 – 2 – 1 -2/2 - 3



VIBRATE/BEEP
 ID NUMBERS
 ALARM SET
 CALL LIST
 PHONE # PREFIX
 BEEP VOLUME
 TIME FORMAT
 LCD CONTRAST
 FIRMWARE VER
 BRACELET TEST
 SET BRAC S/N
 DE-ACTIVATE
 MODEM INFO
 ASSIGNED B/Us
 SATELLITE BAR

VIBRATE/BEEP:

Select/Change how the Offender is notified of an alert/message. If set from the Officer's Menu, it will lock the option and the Offender cannot change it.

ID NUMBERS:

Displays the serial numbers of assigned hardware.

ALARM SET:

Accesses the alarm clock function.

CALL LIST:

Offender Call List - Displays list of pre-defined numbers the Offender can call.

PHONE # PREFIX:

Changes dialing prefix for Base Unit calls. It is a one-time setting.

BEEP VOLUME:

Changes volume of alert/message notification.

TIME FORMAT:

Changes the way the time is displayed.

FIRMWARE VER:

Displays current version of software in SMART[®] XT.

BRACELET TEST:

Displays the receipt of the signal from the bracelet.

SET BRAC S/N:

Allows Officer to temporarily assign a bracelet to an unassigned unit to perform a bracelet test.

DE-ACTIVATE:

Allows Officer to power down the SMART[®] XT. This does not deactivate the unit in the software.

MODEM INFO:

Displays cell signal strength and allows the Officer to force a wireless call.

ASSIGNED B/U:

Displays the Base Unit serial number that is assigned to the Offender.

SATELLITE BAR:

Displays the number of GPS satellites being received, and the signal strength.

Rule Definitions:

BRACELET BATTERY:

The bracelet battery is getting low; the bracelet must be replaced within 72 hours

BRACELET GONE:

- Occurs when the Offender is out of range of the tracking device. Therefore, the location of the Offender is unknown.
- Pro Tech adds a 5-minute buffer period to all Bracelet Gone violations. **This is not a Grace Period. During this time the Offender is not notified of the Bracelet Gone. Only after 5-minutes have passed will the Bracelet Gone rule go into violation.**

BRACELET STRAP:

The bracelet strap has been compromised or removed from the bracelet

BASE UNIT – A/C POWER:

Base Unit has lost A/C power and is running on back-up battery.

BASE UNIT BATTERY:

The base unit has been running on the back-up battery and is about to go dead. With a full charge, 24 hours, the back-up battery will last 16-20 hours. While running on the back-up battery, the Base Unit will not charge the tracking device. If the SMART[®] XT is in the base unit, and the Base Unit can call in, the device will still be able to successfully download its information.

BASE UNIT PHONE LINE DISCONNECT:

The phone line has been removed from the Base Unit. You will not get this alert until the phone line has been re-connected because the Base Unit requires a phone line to report violations.

BASE UNIT UNABLE TO CONNECT:

The Base Unit has not contacted Pro Tech in 6 ½ hours

BASE UNIT TAMPER:

The Base Unit has been compromised in some form.

PHONE NUMBER CALLER ID:

Signals the Offender may have moved the Base Unit to a new phone line

SMART[®] XT BATTERY:

The SMART[®] XT battery is low and needs to be placed in the Base Unit. The Offender receives the automatic message “**Battery Low- Place in Base Unit.**”

SMART[®] XT TAMPER:

The SMART[®] XT has been compromised in some form.

SMART® XT UNABLE TO CONNECT:

It has been over 2-1/2 hours since the SMART® XT has called in. The Offender is not notified of the Unable to Connect and a message cannot be sent to the device.

MOTION NO GPS:

Occurs when the SMART® XT has accumulated 10 minutes of motion in a 60-minute period without receiving a signal from the GPS satellites.

HOME CURFEW:

The SMART® XT is NOT in the assigned Base Unit when the Home Curfew schedule is in effect.

HOT ZONE:

The Offender has violated a Hot Zone set up by the supervising Officer or Agency. This could be an Exclusion (out-of-bound) zone or an Inclusion (in-bound) zone.

- **Inclusion Zone**
 - Geographic areas like home, work, or school where the Offender is confined during an Officer defined schedule

- **Exclusion Zone**
 - Geographic areas used to define off-limits areas to the Offender

Charging the SMART® XT

To charge the XT plug the charging cord into the wall outlet and plug the other end into the charging port on the bottom of the SMART® XT



FCC Statement

This equipment has been tested and found to comply with the limits for a Class B digital device, pursuant to Part 15 of the FCC Rules. These limits are designed to provide reasonable protection against harmful interference in a residential installation.

This equipment generates uses and can radiate radio frequency energy and, if not installed and used in accordance with the instructions, may cause harmful interference to radio communications. However, there is no guarantee that interference will not occur in a particular installation. If this equipment does cause harmful interference to radio or television reception, which can be determined by turning the equipment off and on, the user is encouraged to try to correct the interference by one of the following measures:

- Reorient or relocate the receiving antenna.
- Increase the separation between the equipment and receiver.
- Connect the equipment into an outlet on a circuit different from that to which the receiver is connected.
- Consult the dealer or an experienced radio/TV technician for help.

To assure continued compliance, any changes or modifications not expressly approved by the party responsible for compliance could void the user's authority to operate this equipment. (Example - use only shielded interface cables when connecting to computer or peripheral devices).

This device complies with Part 15 of the FCC Rules. Operation is subject to the following two conditions:

- (1) This device may not cause harmful interference, and
- (2) This device must accept any interference received, including interference that may cause undesired operation.

SAR Statement

This equipment complies with FCC RF radiation exposure limits set forth for an uncontrolled environment. SAR has been evaluated in head and body worn. The use of belt clips, holsters and similar accessories should not contain metallic components. Use of non-approved accessories may violate FCC RF exposure guidelines.

This transmitter must not be co-located or operating in conjunction with any other antenna or transmitter.

CE Statement

Hereby, *Pro Tech Monitoring* declares that the SMART[®] XT is in compliance with the essential requirements and other relevant provisions of Directive 1999/5/EC.

The formal signed copy of the Declaration of Conformity is on file at:

1838 Gunn Highway
Odessa, FL 33556

WARNING! EXCESSIVE SOUND PRESSURES FROM EARPHONES AND HEADPHONES CAN CAUSE HEARING LOSS!