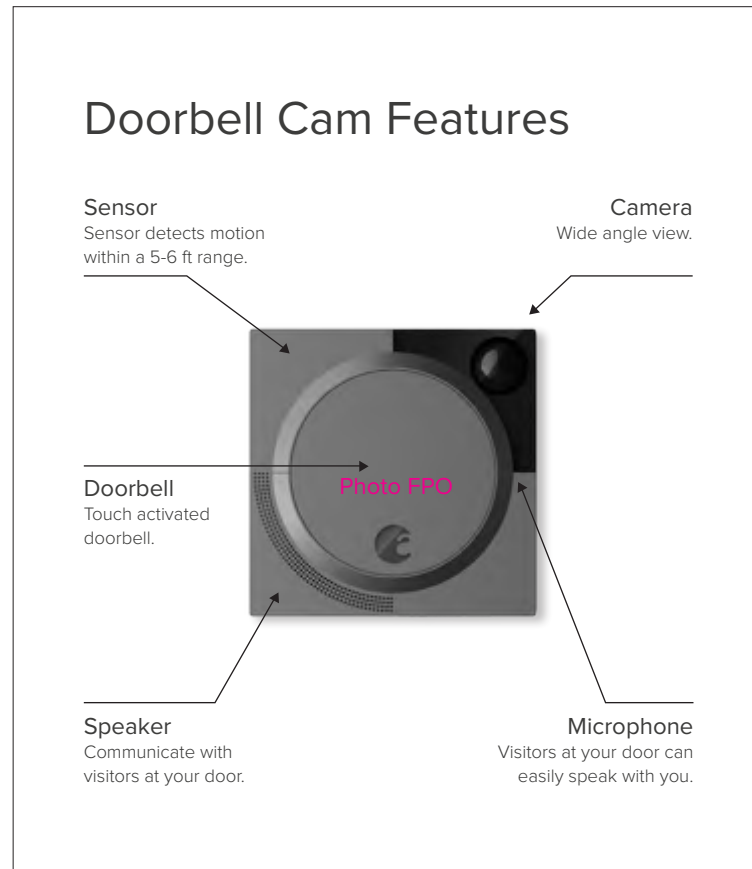
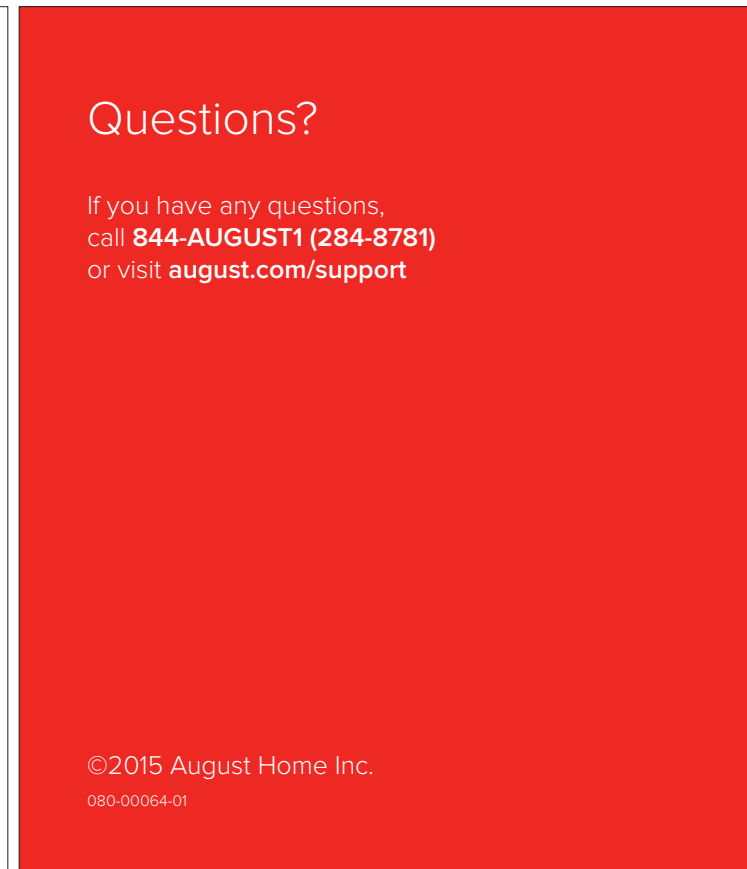


doorbell cam QSG

front, back, inside flap



inside flap



back

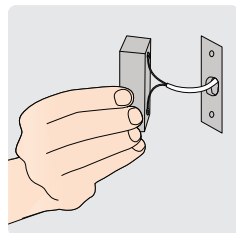


front cover

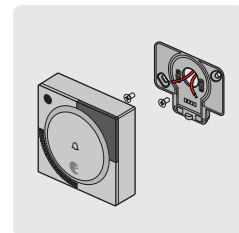
doorbell cam QSG

inside spread

For detailed installation instructions
visit august.com/install

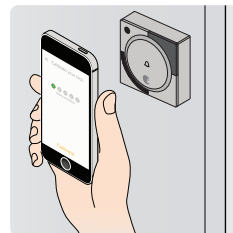


▲ **Installation Prep**
Make sure to turn-off power to your existing doorbell before removal.

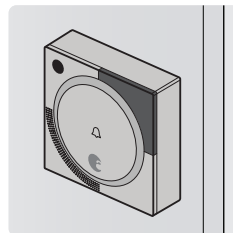


▲ **Install Doorbell Cam**
Follow the instructions in the digital Installation Guide to connect the power wires, install the mounting plate and Doorbell Cam.
august.com/install
The digital Installation Guide will help determine if the included optional mounting wedge will help optimize the camera's view of your door.

1



▲ **Download App**
On the settings screen in the August app, select "Set up a Doorbell Cam" and follow the instructions.



▲ **Use Doorbell Cam**
Use the August app to see and speak with visitors at your door.

2

Optional Mounting Wedge Information:

The wedge is included to help optimize the camera's view of your door. Follow the instructions online to install your August Doorbell Cam using the included mounting wedge: august.com/install.

Wedge image here

Warning:

Installing the Doorbell Cam involves working with your home's electrical wires. Disconnecting power to your doorbell is a precaution we recommend. If you have any questions about this, please consult an electrician for assistance.

3



3 page inside spread

Safety

Risk of explosion and personal injury if device is installed into non compatible circuit. Do not open, mutilate, or expose to conducting materials (metal), moisture, liquid, fire or heat above 54° C (130° F), incinerate, or immerse in water or liquid of any kind. Do not short circuit. Doing so may cause batteries to leak or explode, resulting in personal injury.

The August Doorbell Cam must be correctly installed and used with a wired doorbell circuit that is operating in good condition. You assume all risk associated with the suitability, installation and performance of the door bell and other third party components, hardware, software and services that you select.

Specifications

MODEL NAME: August Doorbell Cam

DESCRIPTION: Video and Wi-Fi® enabled Smart Doorbell

MODEL NUMBER: AB-R1

STANDARDS: Bluetooth Specification v4.0 (Bluetooth® Smart), 5GHz, 2.4GHz 80211(b/g/n)

Wi-Fi®SECURITY: WPA2, WEP INTERFACE: Bluetooth® Smart

LED indicates Doorbell is active, and may also indicate Wireless Accessory Configuration mode.
POWER CONSUMPTION: 100-240V ~ 50-60Hz 0.1A

The Bluetooth® word mark and logos are registered trademarks owned by Bluetooth SIG, Inc. and any use of such marks by August Home, Inc. is under license. Other trademarks and trade names are those of their respective owners.

Wi-Fi® is a registered trademark of Wi-Fi Alliance®.

iPhone® is a trademark of Apple Inc., registered in the U.S. and other countries.

“Made for iPhone” means that an electronic accessory has been designed to connect specifically to iPhone and has been certified by the developer to meet Apple performance standards. Apple is not responsible for the operation of this device or its compliance with safety and regulatory standards. Please note that the use of this accessory with iPhone may affect wireless performance.

Environmental

DIMENSIONS: 2.9" (H) x 2.9" (W) x 0.9" (L)

DEVICE WEIGHT: 14.1 oz.

CERTIFICATION: FCC, IC, CE, BQB, WEEE

OPERATING TEMP: -13 to 122 Fahrenheit (-25 to 50C)

STORAGE TEMP: -22 to 140 Fahrenheit (-30C to 60C)

OPERATING HUMIDITY: 0 to 95%

Terms and Conditions



Limited Warranty Statement

IMPORTANT: By using the August Doorbell Cam hardware (the “Device”) you are agreeing to be bound by the terms of this Limited Warranty set forth below. If you do not agree to the terms of this Limited Warranty you may return the Device (in its original, unused condition) within thirty days of the date of purchase (or the return period provided by your place of purchase, whichever is longer) for a refund in accordance with our returns policy as set forth in Section 3 of this Limited Warranty.

This Limited Warranty gives you specific legal rights. You may also have other legal rights that vary by state, province or jurisdiction. The disclaimers, exclusions, and limitations of liability under this Limited Warranty will not apply to the extent prohibited by applicable law. For a full description of your legal rights you should refer to the laws applicable in your jurisdiction and you may wish to contact a relevant consumer advisory service.

1. Duration and Coverage.

One (1) year Limited Hardware Warranty. Subject to the additional terms and conditions set forth below, August provides the following Limited Warranty:

- Only to the person or entity that originally purchased the Device from August or from one of its authorized resellers or distributors; and
- Only for Devices purchased and delivered to the end user within the United States, Canada, or Mexico.

2. Limited Warranty.

August warrants the Device against defects in materials and workmanship under normal use for a period of one (1) year from the date of purchase (“Warranty Period”). If a Device is returned to August during the Warranty Period as provided below, and August determines that the Device is defective, August will repair or replace the unit with either a new or a refurbished August Doorbell Cam. If the Warranty Period has expired or is otherwise not applicable as per the Scope and Limitation on Warranty (below), we will return the Device to you. More information about this warranty can be found at www.august.com/support.

3. Return and Warranty Service Process.

Please review the online help resources at www.august.com/support prior to seeking warranty service. To obtain warranty service, you must first obtain a Return Merchandise Authorization (RMA) number from a Customer Support Representative (CSR) at August. Customer Support contact information can be found by visiting www.august.com/support. August may attempt to troubleshoot a warranty-related problem prior to issuing a RMA number. August may ask for additional information upon request. Issued RMA numbers remain valid for thirty days from issuance. Once an RMA number is obtained, your Device must be shipped freight prepaid, together with proof of purchase and all accessories, either in its original packaging or packaging affording an equal degree of protection, to the August authorized distribution facility identified by the CSR. Failure to return any of the accessories may result in a delay and/or result in a credit to August or an invoice for the missing accessories.

In performing warranty service, August may furnish replacement parts on an exchange basis and replaced parts will become the property of August. Replacement parts provided by August shall be new or refurbished and of comparable quality, and may be a different part that contains compatible features and functions. You will reimburse August for the inspection, testing and repair of returned equipment determined by August not to be defective or which falls under one of the warranty exclusions described below (as well as pay all shipping and handling charges). In all cases, August’s determination as to whether or not the equipment is defective and covered by warranty will be final. Any replacement equipment will be warranted hereunder for a period of one (1) year from shipment. August reserves the right to change the method by which August may provide warranty service to you, and your Device’s eligibility to receive a particular method of service.

1 Terms and Conditions

4. Scope of and Limitation of Warranty.

The warranty on this Device is limited to the repair or replacement of defective Devices as described in the Limited Warranty section above. This warranty does not cover customer training and education, installation, set up or adjustment, signal or reception problems.

The August Doorbell Cam (statement about certification or not) must be correctly installed and used with an existing doorbell circuit that is operating in good condition. You assume all risk associated with the suitability, installation and performance of the door lock and other third party components, hardware, software and services that you select.

This warranty does not cover damage (i) due to acts of God, other forces beyond our reasonable control, such as internet or power outages, wars, riots, terrorism, labor disputes, earthquakes, floods or other events of "force majeure," accident, misuse, abuse, negligence, commercial use or modification of, or to any part of your Device; (ii) caused by any third party product, service or system, use of the Device for purposes other than for which the Device was designed or intended, or use in improper temperature, humidity or other environmental conditions, or use of the Device in violation of written instructions provided by August (which may be provided at the time of purchase or on its website at www.august.com/support). This warranty does not cover defects due to normal wear and tear or aging. This warranty does not cover damage due to improper repair, operation or maintenance or connections to improper voltage supply or, to the extent allowed by law, attempted repair by anyone other than a facility authorized by August to service your August Device. This warranty does not cover consumable parts (such as batteries). This warranty gives you specific legal rights, and you may also have other rights which vary from state to state (and jurisdiction to jurisdiction).

5. Disclaimer of Warranties

TO THE EXTENT PERMITTED BY LAW, THIS WARRANTY AND THE REMEDIES SET FORTH ARE EXCLUSIVE AND IN LIEU OF ALL OTHER WARRANTIES, REMEDIES AND CONDITIONS, WHETHER ORAL, WRITTEN, STATUTORY, EXPRESS OR IMPLIED. AUGUST DISCLAIMS ALL STATUTORY AND IMPLIED WARRANTIES, INCLUDING WITHOUT LIMITATION, WARRANTIES OF MERCHANTABILITY AND FITNESS FOR A PARTICULAR PURPOSE AND WARRANTIES AGAINST HIDDEN OR LATENT DEFECTS, TO THE EXTENT PERMITTED BY LAW. IN SO FAR AS SUCH WARRANTIES CANNOT BE DISCLAIMED, AUGUST LIMITS THE DURATION AND REMEDIES OF SUCH WARRANTIES TO THE DURATION OF THIS EXPRESS WARRANTY AND, AT AUGUST'S OPTION, THE REPAIR OR REPLACEMENT SERVICES DESCRIBED ABOVE. SOME STATES (COUNTRIES AND PROVINCES) DO NOT ALLOW LIMITATIONS ON HOW LONG AN IMPLIED WARRANTY (OR CONDITION) MAY LAST, SO THE LIMITATION DESCRIBED ABOVE MAY NOT APPLY TO YOU.

6. Limitation of Damages.

IN ADDITION TO THE ABOVE WARRANTY DISCLAIMERS, TO THE MAXIMUM EXTENT PERMITTED BY LAW, NEITHER AUGUST NOR ITS SUPPLIERS SHALL BE RESPONSIBLE OR LIABLE WITH RESPECT TO ANY SUBJECT MATTER OF THIS AGREEMENT OR TERMS OR CONDITIONS RELATED THERETO UNDER ANY BREACH OF CONTRACT, NEGLIGENCE, STRICT LIABILITY OR ANY OTHER THEORY (A) FOR LOSS OR INACCURACY OF DATA OR COST OF PROCUREMENT OF SUBSTITUTE GOODS, SERVICES OR TECHNOLOGY, OR (B) FOR ANY INDIRECT, INCIDENTAL OR CONSEQUENTIAL DAMAGES INCLUDING, BUT NOT LIMITED TO BUSINESS INTERRUPTION, LOSS OF REVENUES AND LOSS OF PROFITS. THE FOREGOING SHALL APPLY EVEN IF AUGUST HAS BEEN ADVISED OF THE POSSIBILITY OF SUCH DAMAGES. TO THE MAXIMUM EXTENT PERMITTED BY LAW, AUGUST'S AGGREGATE CUMULATIVE LIABILITY HEREUNDER SHALL NOT EXCEED THE ORIGINAL PURCHASE PRICE PAID FOR THE DEVICE THAT CAUSED SUCH DAMAGE. CERTAIN STATES (COUNTRIES AND PROVINCES) DO NOT ALLOW THE LIMITATION OF LIABILITY FOR INCIDENTAL OR CONSEQUENTIAL DAMAGES, SO THE EXCLUSIONS SET FORTH ABOVE MAY NOT APPLY TO YOU.

2 Terms and Conditions

Compliance

FCC INTERFERENCE STATEMENT

This device complies with Part 15 of the FCC Rules. Operation is subject to the following two conditions: (1) This device may not cause harmful interference, and (2) this device must accept any interference received, including interference that may cause undesired operation.

This equipment has been tested and found to comply with the limits for a Class B digital device, pursuant to Part 15 of the FCC Rules. These limits are designed to provide reasonable protection against harmful interference in a residential installation. This equipment generates, uses and can radiate radio frequency energy and, if not installed and used in accordance with the instructions, may cause harmful interference to radio communications. However, there is no guarantee that interference will not occur in a particular installation. If this equipment does cause harmful interference to radio or television reception, which can be determined by turning the equipment off and on, the user is encouraged to try to correct the interference by one of the following

- Reorient or relocate the receiving antenna.
- Increase the separation between the equipment and receiver.
- Connect the equipment into an outlet on a circuit different from that to which the receiver is connected.
- Consult the dealer or an experienced radio/TV technician for help.

FCC Caution: Any changes or modifications not expressly approved by the party responsible for compliance could void the user's authority to operate this equipment.

This transmitter must not be co-located or operating in conjunction with any other antenna or transmitter.

INDUSTRY CANADA COMPLIANT

This device complies with RSS-210 of the Industry Canada Rules. Operation is subject to the following two conditions: (1) This device may not cause harmful interference, and (2) this device must accept any interference received, including interference that may cause undesired operation.

Radiation Exposure Statement:

This equipment complies with IC radiation exposure limits set forth for an uncontrolled environment. This equipment should be installed and operated with minimum distance 20cm between the radiator & your body.

INDUSTRIE CANADA CONFORME

Ce dispositif est conforme à la norme CNR-210 d'Industrie Canada applicable aux appareils radio exempts de licence. Son fonctionnement est sujet aux deux conditions suivantes: (1) le dispositif ne doit pas produire de brouillage préjudiciable, et (2) ce dispositif doit accepter tout brouillage reçu, y compris un brouillage susceptible de provoquer un fonctionnement indésirable.

Déclaration d'exposition aux radiations:

Cet équipement est conforme aux limites d'exposition aux rayonnements IC établies pour un environnement non contrôlé. Cet équipement doit être installé et utilisé avec un minimum de 20 cm de distance entre la source de rayonnement et votre corps.