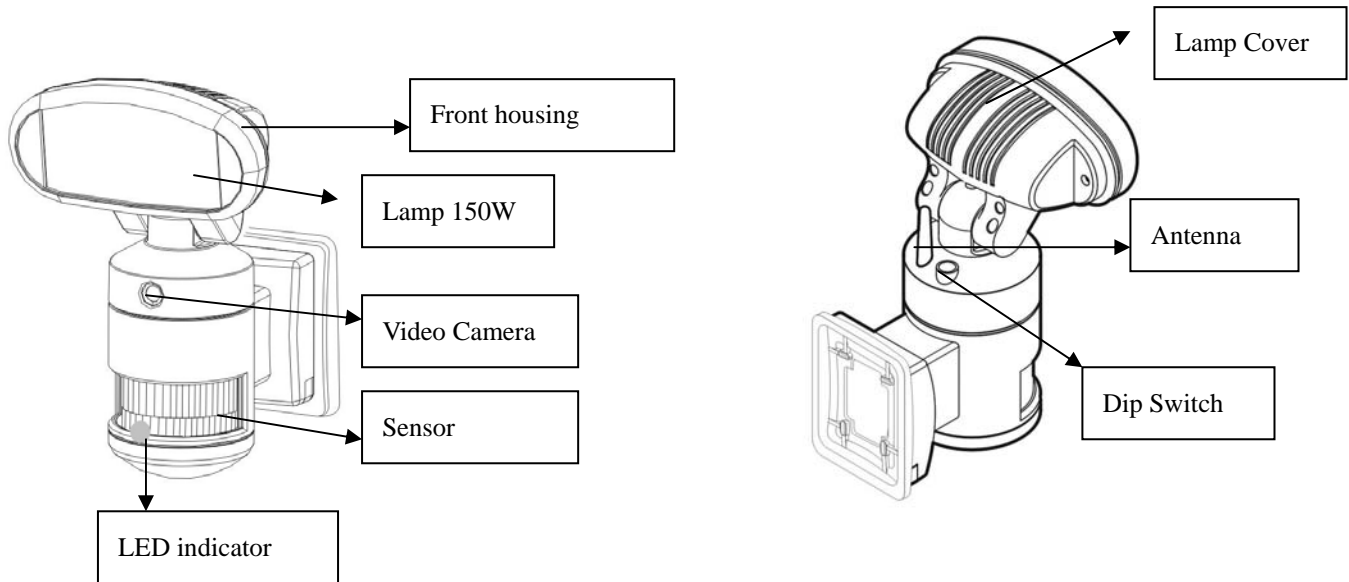


THE INTELLIGENT MOTION SENSOR TRACKING LIGHT INSTALLATION INSTRUCTIONS

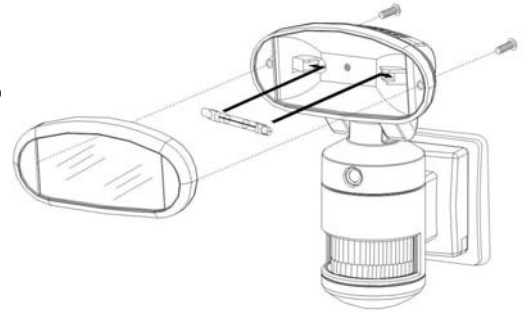
Read all instructions before proceeding with the installation

OVERVIEW OF AEC-9336CU



INSTALLING THE BULB

- Unscrew the lamp cover of the luminaire and install a 150W J-type lamp
- Re-fit the lamp cover and tighten the screws.



IMPORTANT: THE INTALLATION OF THIS FITTING MUST BE DONE BY A QUALIFIED ELECTRICIAN.

- This fitting must be earthed.
- Do not mount the luminaire against inflammable surfaces.
- The motion detector will not operate correctly if it is installed:
 - (I) Near the outlet of a central heating boiler
 - (II) Near air conditioning plant
 - (III) Pointing directly at moving vehicles
 - (IV) Within sight of reflection from moving water
 - (V) Where other lamps could shine onto the detector
- The maximum rating of this luminaire is 150 Watts. Check that the total load of the circuit. Including this luminaire. Does not exceed the rating of the circuit cable.

WARNING !!!

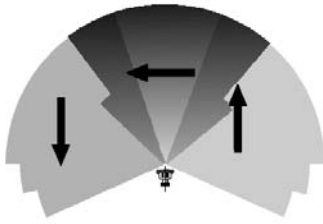
BEFORE ATTEMPTING ANY INSTALLATION OR MAINTENANCE, ENSURE THAT THE ELECTRICAL SUPPLY IS SWITCHED OFF AND THE CIRCUIT FUSES REMOVED OR THE CIRCUIT BREAKER IS IN THE "OFF" POSITION.

NOTE: This highly responsive unit may occasionally activate due to rapid environmental changes. Allow for approximately 30 seconds warm-up time before the sensor resumes normal activity.

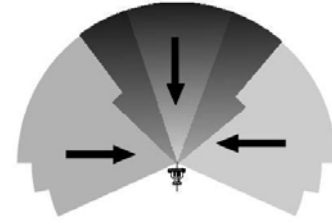
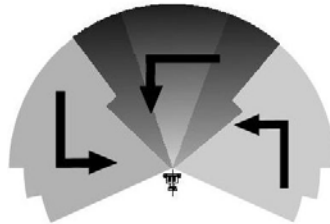
MOUNTING THE FITTING

To ensure correct operation of the sensor, mount the luminaire that traffic passes across the detector.

TOP VIEW



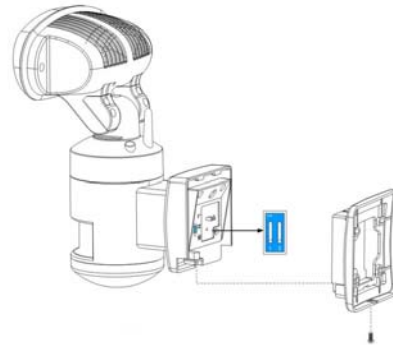
GOOD SENSITIVITY



LESS SENSITIVITY

SETTING THE LIGHT UP TIME & SENSITIVITY

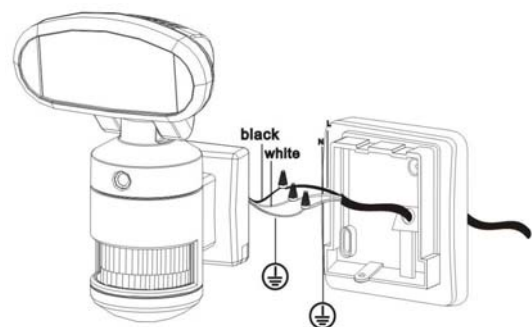
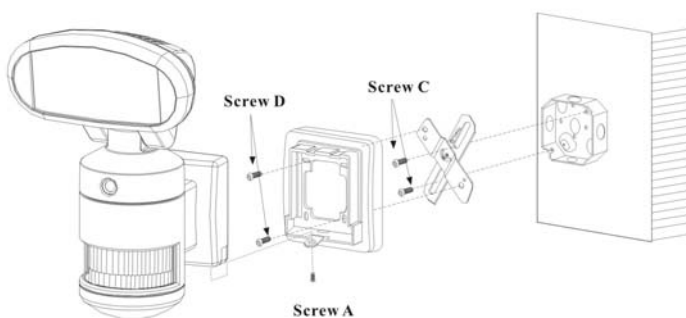
- Remove the back mounting box from the fixture by unscrewing the screw at the bottom.
 - Set the Light up time & Sensitivity you preferred
- 1 : Light up time (OFF : 30 seconds / ON : 60 seconds)
2 : Sensitivity (OFF : 5m / ON : 10m)
- Re-fit the back mounting box and tighten the screw.



INSTALLATION AND WIRING INSTRUCTIONS

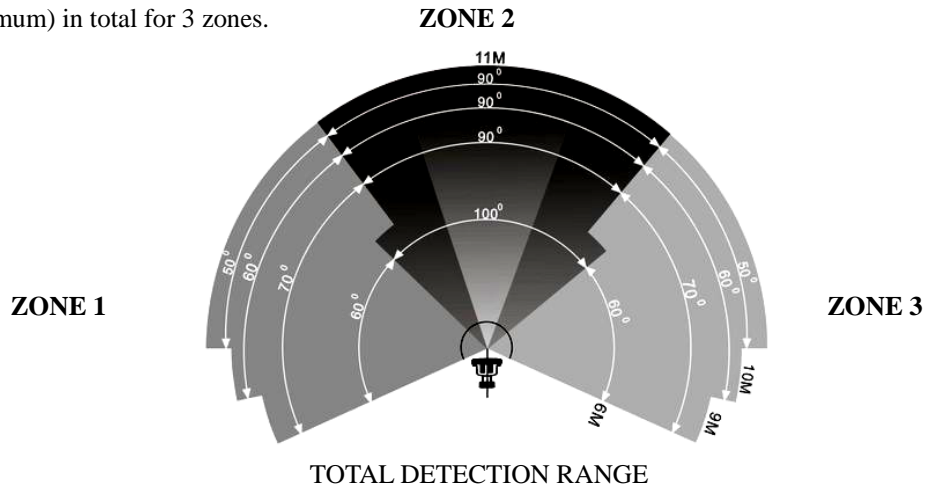
Installation to a junction box using crossbar mount

1. Attach the crossbar to junction box and fix by screw A.
2. Connect the black wire (live wire) from the AC power cord to the single black wire coming from Sensor Tracking Light using one of the supplied wire nuts.
3. Connect the white wire from the AC power cord to the white wire coming from Sensor Tracking Light using one of the supplied wire nuts.
4. Connect the green/yellow wire from the AC power cord to the green/yellow wire coming from Sensor Tracking Light using one of the supplied wire nuts.
5. Make sure the polarity is correct.
6. Attach the unit to the crossbar and fix by screw B and screw C.

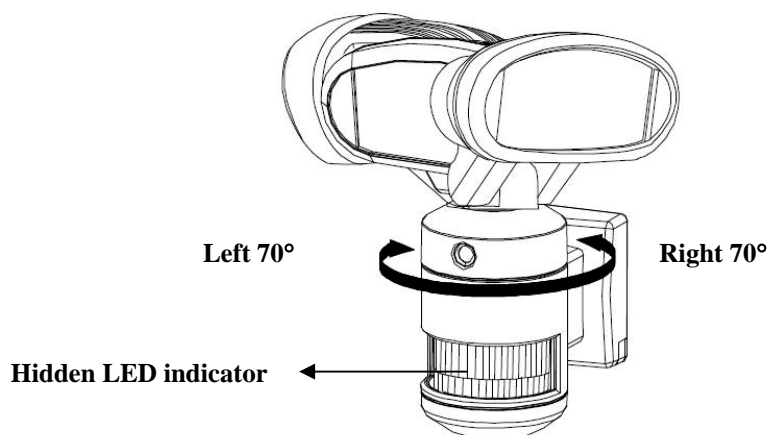
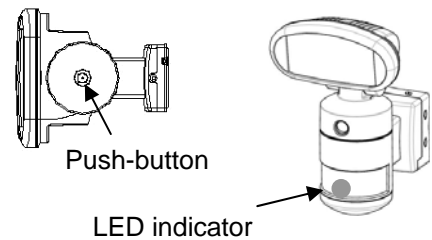


FUNCTION

This light is equipped with 3 motion sensors: zone 1 covers 60 degrees, zone 2 covers 100 degrees and zone 3 covers 60 degrees. 220 degrees (maximum) in total for 3 zones.



- The light will switch on for 30 /60 seconds and off automatically when heat/ movement is detected.
- The factory default: the mode is 「 Auto mode 」 for light works at night, camera works all day.
- To change the mode to nighttime only(Auto mode), push the button at the bottom of the housing and the hidden LED indicator will turn off at this mode. The light will be on at 30 /60 seconds when detecting any movement at night.
- Push-button for programmable functions:
 - **Test mode:** light and camera work all day
 - **Auto mode:** light works at night, camera works all day
- Reset function: If the stepper motor of tracking light works abnormal, the hidden LED indicator will flash in red and the light will stop turning automatically. In Test mode, the red LED will flash for 3 times and off for 5 seconds; in “Normally mode”, the red light will flash in regular pattern. Please simply switch off and on the main power to resume the tracking light. Below are the possible abnormal situations.
 - External force: the light head is blocked by objects or is blown by strong wind and is unable to turn properly, the hidden LED will flash in red to signal users the abnormal situation.
 - Stepper motor: when stepper motor is going to be out of its lifetime or is damaged, the hidden LED will flash in red to signal users the abnormal situation. Please switch off and on the main power, the tracking light now may or may not resume its operation. If the stepper motor stops working, AEC-9336C becomes a regular motion sensor security light.



OPERATION

1. Insert the plug to activate the light, the light is now under Test mode: light works on day and night

NOTE: Allow for approximately 30 seconds warm-up time before the sensor resumes normal activity.

2. To test, walk through the sensor's detection area.

3. Movement will activate the sensor and turn the light on, the light will turn the face to the detected zone.

4. After the light is activated, **keep out of detection area** and the light will switch off automatically after light up time (30/60 seconds). The light will be activated again when detecting any movement.

If there is continuing movement in the detection zone, the light will stay on until movement ceases. (after light up time)

LAMP REPLACEMENT

To isolate the unit, first switch off the unit from the mains power. Allow bulb to cool before attempting to remove it. Unscrew the lamp cover and take the old lamp out and replace with new one, close the lamp cover and tighten the screws.

WARNING: This fitting will become hot when in use. Allow bulb to cool before touching.

NOTE: THE INTELLIGENT MOTION SENSOR TRACKING LIGHT IS DESIGNED TO ILLUMINATE WHEN THE DETECTION AREA IS ENTERED BY A PERSON AND WILL DETECT MOVING HEAT SOURCE. THERE IS NO GUARANTEE IMPLIED THAT IT WILL PROVIDE TOTAL SECURITY OR PREVENT ILLEGAL ENTRY.

SPECIFICATION

Detection Method: Passive Infrared Sensor (with continuously detect function)

Sensor Range: 10m x 210° (maximum)

Camera: Color CMOS image sensor

View angle 60°

Transmission frequency: ISM 2.4GHz ARIB-T66

Power source: AC 100V 50/60Hz

Time adjustment: 30 / 60 seconds.

Sensitivity adjustment: 5m / 10m

Load Rating: J-Type 150 Watts Max.

PSE cable: 5m

Waterproof rating: IP55

OperationTemperature:0°C~+50°C

FCC Caution: Any changes or modifications not expressly approved by the party responsible for compliance could void the user's authority to operate this equipment.

This device complies with Part 15 of the FCC Rules. Operation is subject to the following two conditions: (1) This device may not cause harmful interference, and (2) this device must accept any interference received, including interference that may cause undesired operation.

This device and its antenna(s) must not be co-located or operating in conjunction with any other antenna or transmitter.

F. Installing the Driver on your computer

- Place CD driver into the Computer CD slot and installing. Choice the software you use for your computer.
- Follow the instructions on the installation screen
 - Click **Setup_090817.exe** (fig 1) → **Next** (Fig. 2) → **Next** (Fig. 3) → **Install** (Fig. 4) → **Finish** (Fig. 5) → Restart windows.
 - If your computer doesn't run the installation program automatically, please click the "Start" button and choose "Run." Then browse your computer to find CD slot and Driver and click "Setup".

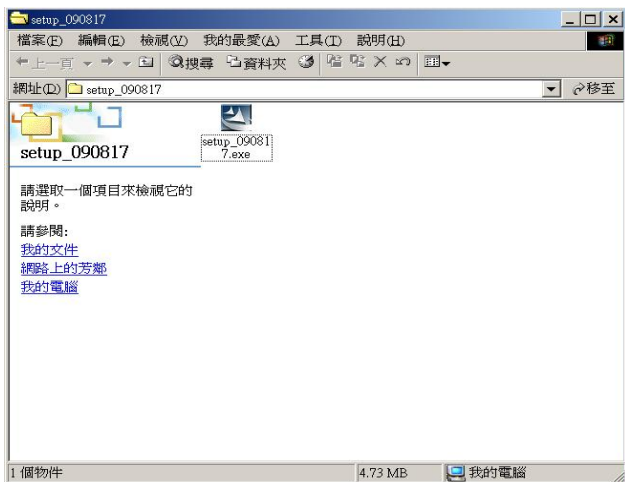


Fig. 1



Fig. 2



Fig. 3

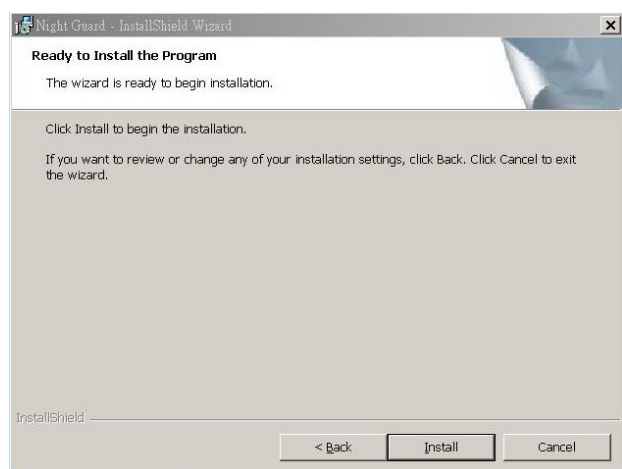


Fig. 4



Fig. 5

G. Installing the driver of 752C

- Installing the **Drive**, please refer above “Installing the Driver on your computer”.
- Assembly and power on the 9336C. Please refer assembly of 9336C.
- Please re-install the driver of 752C if appear this software cannot find.
 - Plug 752C into a USB port on your PC and follow the instructions on the installation screen as fig. 6 ~ 11.

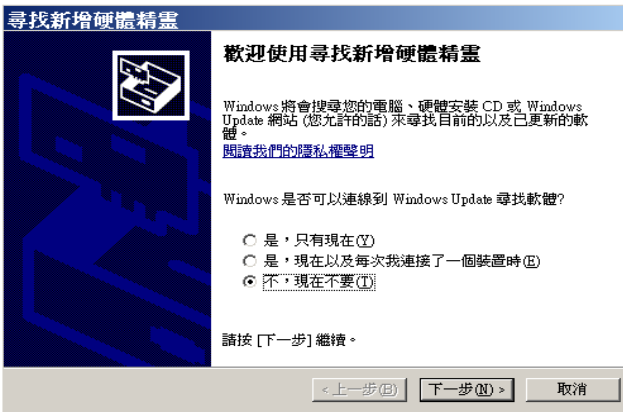


Fig. 6



Fig. 7

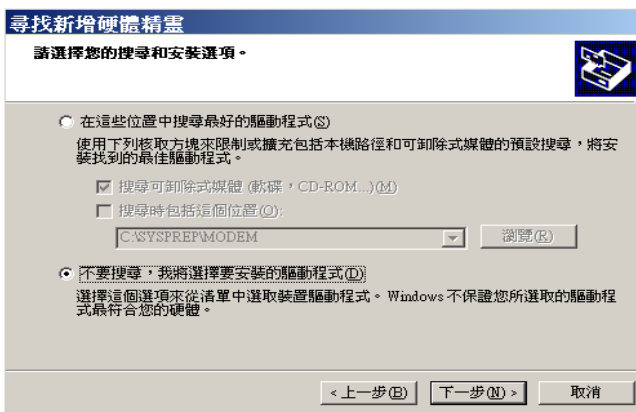


Fig. 8

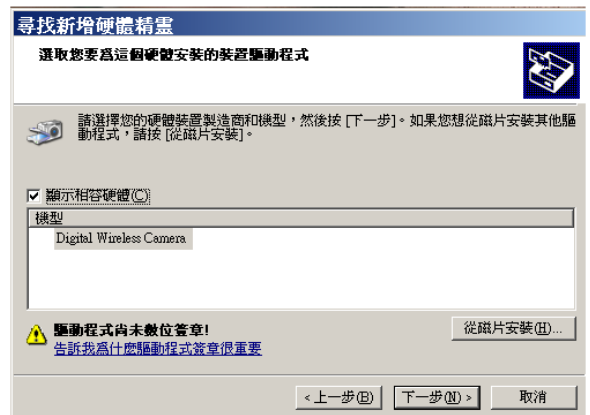


Fig. 9



Fig. 10



Fig. 11

- Set up the 9336C and 752C of ID code: Plug 752C into a USB port on your PC , 10 seconds later to click Night Guard as show on the screen. Click the Night Guard (Fig. 12) → **Setup** (Fig. 13) →

Device Setup(Fig. 14)→ Choice channel **CH1**~ **CH4**(Fig. 15)→ Press 9336C of top button and when the video is shown on the screen the setup is completed(Fig. 16)→ then click OK(Fig. 17)。

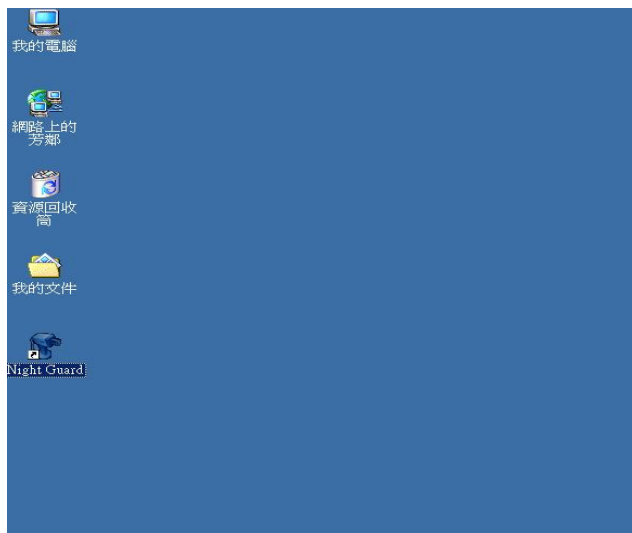


Fig. 12

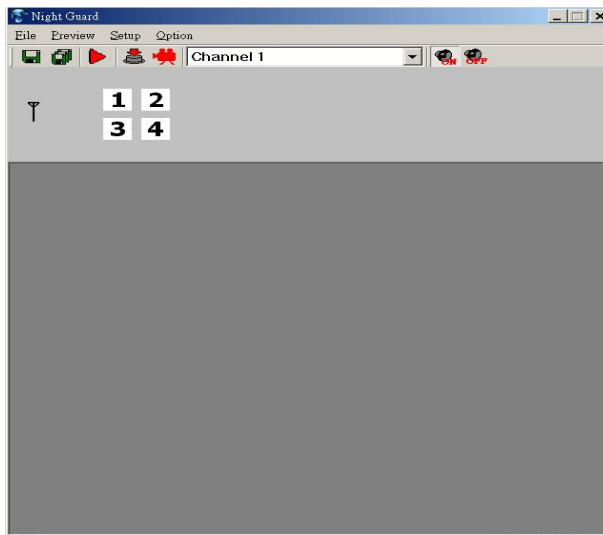


Fig. 13



Fig. 14

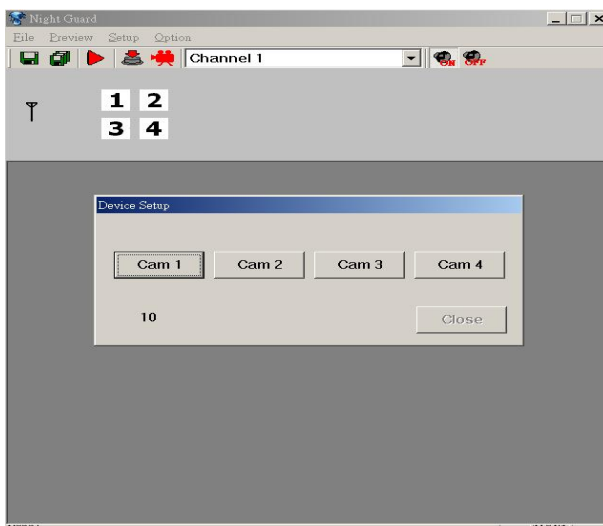


Fig. 15

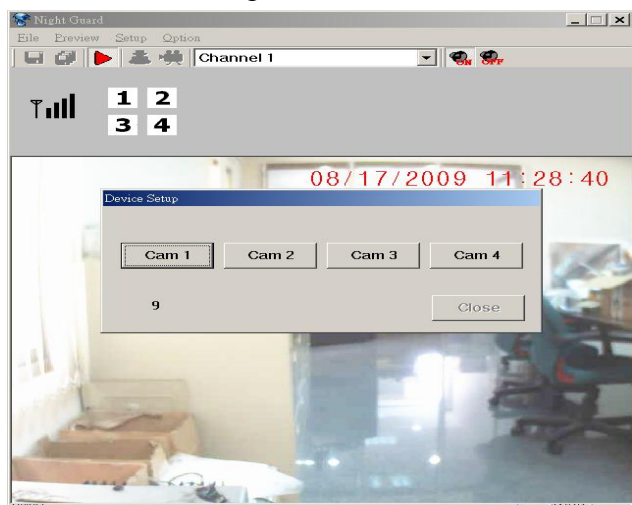


Fig. 16

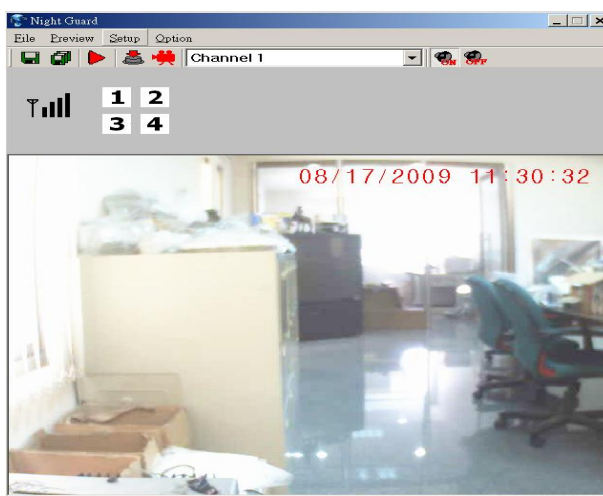


Fig. 17

H. Definition of Driver of 752C

- File : Save mode
- A : Single file save

- B : Multi files save
- Preview : Shooting / Recording mode
 - C : Auto recording
 - D : Manual recording - Capture Photo
 - E : Manual recording - Recording video
- Setup : Channel Column
- Channel 1 : Set up Channel
 - F : It can select Channel 1~4 of Single view or 4 quad view
- Alarm
 - G / H : Alarm ON / OFF
 - J : When TX detected, one of channel 1~ 4 will turn to Red background.
- Signal Intensity Display
 - I : RX and TX of transmission signal.

