

# Table of Contents

<b>1.</b>	<b>INTRODUCTION .....</b>	<b>1</b>
<b>1.1</b>	<b>BACKGROUND .....</b>	<b>1</b>
<b>1.2</b>	<b>J2534 - A SOLUTION ARRIVES .....</b>	<b>1</b>
<b>1.3</b>	<b>PASS-THRU VEHICLE INTERFACE.....</b>	<b>2</b>
<b>2.</b>	<b>GETTING TO KNOW MAXIFLASH PRO .....</b>	<b>3</b>
<b>2.1</b>	<b>FRONT PANEL .....</b>	<b>3</b>
<b>2.2</b>	<b>REAR PANEL .....</b>	<b>5</b>
<b>2.3</b>	<b>POWER UP.....</b>	<b>7</b>
<b>2.4</b>	<b>SPECIFICATIONS.....</b>	<b>7</b>
<b>2.5</b>	<b>ACCESSORIES INCLUDED.....</b>	<b>9</b>
<b>2.6</b>	<b>PRODUCT TROUBLESHOOTING.....</b>	<b>10</b>
<b>3.</b>	<b>DRIVER SETUP &amp; NETWORK CONFIGURING .....</b>	<b>11</b>
<b>3.1</b>	<b>DRIVER SETUP .....</b>	<b>11</b>
<b>3.2</b>	<b>NETWORK CONFIGURATION .....</b>	<b>12</b>
<b>4.</b>	<b>REPROGRAMMING WITH J2534 DEVICE.....</b>	<b>19</b>
<b>5.</b>	<b>SOFTWARE UPDATE.....</b>	<b>21</b>
<b>6.</b>	<b>WARRANTY AND SERVICE.....</b>	<b>24</b>
<b>6.1</b>	<b>LIMITED ONE YEAR WARRANTY .....</b>	<b>24</b>
<b>6.2</b>	<b>SERVICE PROCEDURES.....</b>	<b>24</b>

# 1. Introduction

## 1.1 Background

The days of diagnosing and repairing automobiles without a laptop beside you are quickly fading. Newer vehicles include a large number of onboard computers that are each dedicated to performing specific tasks. Common onboard computers in newer vehicle include the Engine Control Module (ECM), Transmission Control Module (TCM), Fuel Injection Control Module (FICM), Anti-lock Brake System (ABS), Body Control Module (BCM) and numerous other control modules to manage every electronic system from power door locks to crash data.

Each onboard computer is programmed at the factory with software enabling it to perform certain tasks. Inside the ECM is software containing hundreds or even thousands of parameters to control spark, fuel, idle, cruising, emissions, economy, drivability, and performance. Likewise, a TCM will have software to control how the transmission and torque converter function. Sometimes, after the vehicle is shipped from the automaker, updates are released to improve emissions, fuel economy, drivability, performance, or specific bugs in the original software that have caused warranty issues. Updating this software can be a proactive fix because often it will resolve problems that a customer hasn't reported or noticed yet.

The practice of updating software in these modules is more commonly known as flash reprogramming. At new car dealerships, flash reprogramming is relatively straight forward because service technicians are connected to the automaker and have the expensive, specialized dealer service tools dedicated to reprogramming. The independent repair shops have faced a more difficult challenge because most shops typically service more than one make of vehicles. This increases the complexity, cost and training required to operate dozens of different factory service tools.

## 1.2 J2534 - A Solution Arrives

In 2000, the Environmental Protection Agency (EPA) had been watching this issue and decided to take action. The EPA requested a standard be developed within the SAE that led to J2534, a mandated

specification to which automakers who sell vehicles in the United States must conform. The original J2534 specification was later updated to J2534-1 in order to support all automakers. The EPA mandate requires automakers to support aftermarket repair shops with J2534-1 flash reprogramming for any emissions related computer modules on a vehicle that can be reprogrammed by a new car dealership. This mandate took effect for all 2004 and newer vehicles.

SAE J2534 is a standard devised of two independent parts: subscription software and a J2534 compliant Pass Thru vehicle interface. The subscription software comes directly from the automaker, runs on your shop PC or laptop, and can either be web-based or CD-based. The subscription fees are charged differently for each automaker.

### **1.3 Pass-Thru Vehicle Interface**

The second part of the system is a SAE J2534 compliant Pass-Thru vehicle interface. This device acts as a gateway between the vehicle's onboard computers and the technician's personal computer. It translates messages from the PC into the protocols used by the automobile and vice versa.

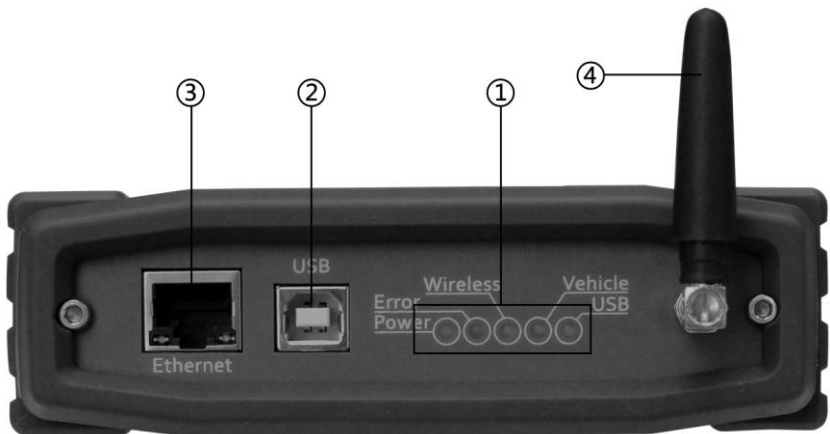
Performing J2534 reprogramming requires computer knowledge and experience. The technician will need to operate a laptop or desktop, the Pass-Thru device, and the reprogramming software. Operation will also require a good high-speed connection to the Internet such as DSL, Cable, or T1.

## 2. Getting to Know MaxiFlash Pro

Thank you for choosing the MaxiFlash<sup>®</sup> Pro Reprogramming Device! This multi-protocol Pass-Thru vehicle interface is a fully compliant SAE J2534-1 & SAE J2534-2 (March 2006) device, specially designed to provide users with convenient PC communication and ECU reprogramming capabilities on any modern vehicle diagnostic bus, and offer the most significant features desired by OEM customers: reliability, fast performance and flexibility.

### 2.1 Front Panel

The MaxiFlash<sup>®</sup> Pro Pass-Thru device supports three ways of PC connection: **Ethernet**, **USB** and **Wi-Fi**, which make PC communication and vehicle reprogramming all the more convenient and easy for technicians. These three connection ports to the PC are available in the front panel of the device.



#### 1) Status Lights

There are 5 status lights in the front panel of the reprogramming tool, which indicates the Pass-Thru interface's working status as well as the hardware conditions, and are very useful for troubleshooting the

device's communication or connection to the Vehicle or PC. Please refer to **Table 1** for detailed description of the status lights.

TABLE 1—STATUS LIGHTS ON THE FRONT PANEL

Light	Description
Power	Illuminates solid green when power-on.
Error	<p>Illuminates solid red when serious hardware failure occurs. Please call technical supports for assistance.</p> <p><i>Note: This status light turns on automatically every time when the device is power up, which is a normal self-test procedure, and it will turn off automatically later when the device starts working normally.</i></p>
Wireless	Flash green when connected to Wi-Fi network.
Vehicle	<p>Flash green when communicating with the vehicle's network.</p> <p><i>Note: Do not disconnect while this status light is on! If you interrupt the flash reprogramming procedure while the vehicle's ECU is blank or only partially programmed, the module may be unrecoverable.</i></p>
USB	Flash green when the device is properly connected and communicating with the PC via the USB cable.

## 2) USB Port

The USB port provides the easiest connection between the device and the PC via a USB cable, and is used to control the device from the software application running on the PC.

### 3) Ethernet Port

The Ethernet port connects the device to the PC directly or through an existing network via an Ethernet cable, which supports longer range and higher performance.

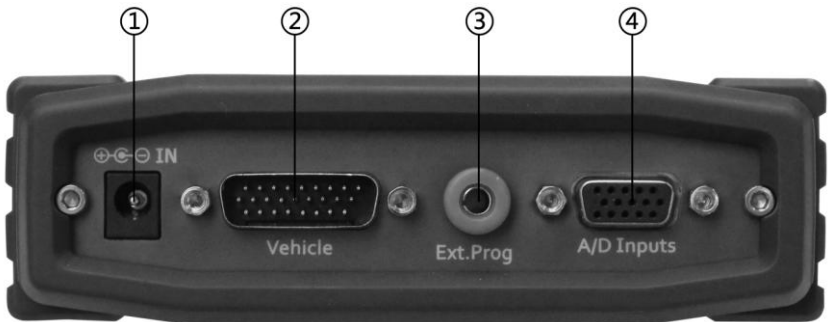
**NOTE:** *There're two status lights at the bottom corners alongside the Ethernet Port, which illuminate when the device is properly connected to the PC or an existing network through the Ethernet Cable.*

### 4) Wi-Fi Receiver

The Wi-Fi receiver, which offers higher bandwidth and distance range, can either connect the device to the PC via the wireless network access, or simply setup the device to serve as a wireless AP hotspot that provides direct wireless network access for the PCs.

## 2.2 Rear Panel

Connections to the **power adapter**, **vehicle**, **external programming voltage**, and **analog inputs** are available on the rear panel.



#### 1) Power Port

The power port (DC 12V) connects the device and the power source with the adapter, which supplies power to the reprogramming tool.

## 2) OBDII Connector

The OBDII connector connects the device to the vehicle's DLC via a standard high density DB-26 MVCI – OBDII cable.

## 3) External Programming Voltage Output

The external programming socket provides the user with access to the 5-20V programming voltage. This is used for Mitsubishi, Subaru or any other vehicle that needs voltage on an additional connector.

## 4) A/D Inputs

The 12-bit analog inputs are setup for an input range of 0 - 27.5VDC and are electrically protected against reverse voltage and over voltage conditions. The Mating connector is a High Density DB-15.

**NOTE: The 3) External Programming Voltage Output and 4) A/D Input ports are currently used for internal debugging only.**

TABLE 2 – GENERAL PURPOSE ANALOG INPUTS

Pin	Function	Direction
2	Channel 6	In
4	Channel 3	In
6	Battery Voltage	Out (200mA max)
8	Channel 4	In
10	Channel 1	In
12	Channel 5	In
14	Channel 2	In
1,3,5,7,9, 11,13,15	Ground	

## 2.3 Power Up

The Pass-Thru vehicle reprogramming device can be powered either via the vehicle DLC, or the external power adapter.

### ✓ **Vehicle Power Supply**

- 1) Connect the MVCI – OBDII cable to the reprogramming tool.
- 2) Find DLC on vehicle.

✎ *A plastic DLC cover may be found for some vehicles and you need to remove it before plugging the OBDII cable.*

- 3) Plug OBDII cable to the vehicle's DLC.
- 4) Wait for the reprogramming tool to power up.

### ✓ **External DC Power Supply**

- 1) Locate the power port of the device.
- 2) Connect the device and the power source with the power adapter.
- 3) Wait for the reprogramming tool to power up.

✎ *The external power supply is necessary for off-board reprogramming, and since this reprogramming tool does not receive power from the PC's Ethernet or USB ports, it is also needed when the device is communicating applications on the PC.*

✎ *NOTE: The external power supply does not support power charging to the vehicle battery.*

## 2.4 Specifications

The MaxiFalsh<sup>®</sup> Pro Reprogramming Device is powerfully featured to be desired by all OEM customers:

- Supports simultaneous communication definition in J2534-1, running 3 protocols at the same time, which greatly improves reprogramming and diagnostic speed.



- Supports multiple device connections to the PC, which can operate diagnostic and reprogramming functions on more than one vehicle at the same time.
- Embedded with the ARM9 Dual-core processor (clocked up to 500MHz), which further boosts the communicating speed.
- Rugged aluminum case with non-slip rubber end caps, capable of withstanding harsh environment.

Check up detailed specifications in the following table:

TABLE 3 – DEVICE SPECIFICATIONS

Name	Value
Input Voltage Range	6VDC to 26VDC
Supply Current	350mA @ 6VDC 200mA @ 12VDC 110mA @ 24VDC
Operating Temperature	0°C to +60°C (ambient)
Storage Temperature	-65°C to +100°C (ambient)
Dimensions	Length: 183.8 mm (7.23") Width: 135.5mm (5.33") Height: 41 mm (1.6")
Weight	0.54kg (1.20lb)

### **Bus Protocols**

- Primary CAN / ISO15765 / GMLAN
- Secondary CAN / ISO15765 / GMLAN (Dual or Single Wire)
- Ford SCP (J1850PWM)

- GM Class2 (J1850VPW)
- KWP2000 (ISO9141 / 14230)
- Chrysler SCI (J2610)

### **Other**

- Compliant to SAE J2534-1 (2004) and J2534-2 (2006) reprogramming standards
- Compliant to ISO 22900-1 MVCI physical layer
- Programming voltage on all J1962 pins (except 4, 5, and 16) or Aux
- Ground pins 1,2,9,12, or 15

## **2.5 Accessories Included**

- 1) **User's Manual** - Instructions on tool operations
- 2) **MVCI to OBDII Cable** - Provides power to tool and communicates between tool and vehicle, high density DB-26
- 3) **USB Cable** - Allows easy connection to PC
- 4) **Ethernet Cable** - Connects to PC or an existing network
- 5) **Wi-Fi Antenna** – Receives wireless network signals and setup as Wi-Fi hotspots
- 6) **Power Adapter** - Supplies power to the reprogramming tool.
- 7) **CD** - Includes user's manual, software development kit, device driver, etc

**The following accessories are optional items according to your demand, available and buyable from Autel directly or the local agents or dealers:**

- 8) **Analog Input Line** - Measures voltage levels
- 9) **External Programming Voltage Output Line** - Provides access to the 5-20V programming voltage

## 2.6 Product Troubleshooting

This part describes problems that you may encounter while using the reprogramming tool.

### Vehicle Linking Error

A communication error occurs if the reprogramming tool fails to communicate with the vehicle's control module when perform the program re-flash. You need to do the following to check up:

- ✓ Verify that the ignition is ON.
- ✓ Check if the reprogramming tool's OBD II connector is securely connected to the vehicle's DLC.
- ✓ Turn the ignition off and wait for about 10 seconds. Turn the ignition back to on and continue the operation.
- ✓ Verify the control module is not defective.

### PC Communication Error

If you cannot communicate the device to the PC, you need to do the following check up:

- ✓ Verify the reprogramming tool is powered, and the green power LED is illuminated.
- ✓ Check if there is any firewall software interfering with the connection port.
- ✓ Check if the green status light is illuminated for Ethernet, USB, or Wireless.

If these issues have been addressed, verified, and you are still having trouble, please contact technical supports for assistance.

## 3. Driver Setup & Network Configuring

### 3.1 Driver Setup

In order for the Pass-Thru Device to operate correctly with the re-flashing and diagnostic applications on the target PC, you will need to first install the MaxiFlash Pro J2534 device driver onto the PC that will control the device.

**To setup the J2534 Pass-Thru device driver, you will need the followings:**

- ✓ CD with the device driver program
- ✓ PC or laptop with USB ports
- ✓ J2534 Pass-Thru reprogramming tool
- ✓ USB cable

***NOTE: The following steps may vary depending on the operating system or components that are installed on your computer, but in general this is the standard installation process.***

- 1) Insert the driver installation CD to your PC. The driver installation wizard will load momentarily.
- 2) Click on “Next” on the welcome page.
- 3) Select “Next” on the installation location and installation name. It is recommended not to change the default settings; otherwise the computer may have a hard time recognizing the driver.
- 4) Click “Install” and the driver program will be installed onto your PC.

***NOTE: During this part of the process a MS-DOS style window will pop up and may remain on your screen for a short while, which is perfectly normal. Do not attempt to close the MS-DOS style window manually as this will prevent the device driver being installed successfully, it will close automatically when the device driver installation is complete.***

- 5) Connect the Pass-Thru device to the PC with the supplied USB cable, a “Found New Hardware Wizard” window will pop up.
- 6) Select “Install the software automatically (Recommended)”, click on “Next”, and Windows will search for the driver software automatically.
- 7) Select the “MaxiFlash Pro” program and click on “Install”.
- 8) When the MaxiFlash Pro device driver program is successfully installed, you should be able to see the “Maxi Flash Pro” entry in the Device Manager under “Maxi Pass Thru Serial”. (Figure 3.1)

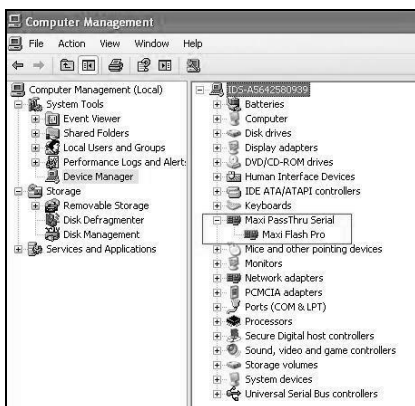


Figure 3.1

***NOTE: If the driver installation is not complete or unsuccessful, or the PC still can't recognize the device, an Error or Question mark will display beside the entry icon. Please try installing the driver program again by clicking the entry, then select start auto searching for the software, or manually locate the specific file that contains the driver program.***

## 3.2 Network Configuration

The MaxiFlash Pro device program also provides users with an easy and convenient application interface for operating network configurations to ensure proper communication between the Pass-Thru device and the PC.

### 3.2.1 Ethernet Connection

Using wired network between the Pass-Thru device and the PC, users can choose either way of connection described as below:

- **Connecting to a PC Directly**
  1. Connect the PC to the Pass-Thru device with the supplied Ethernet cable.
  2. Open “My Network Places” Properties.
  3. In the Properties window, under the LAN or High-Speed Internet heading, right click on the “Local Area Connection” and select “Properties”.
  4. Now a new window should pop up, titled “Local Area Connection Properties” Here you need to select the Internet Protocol (TCP/IP) option, and then click on the “Properties” button.

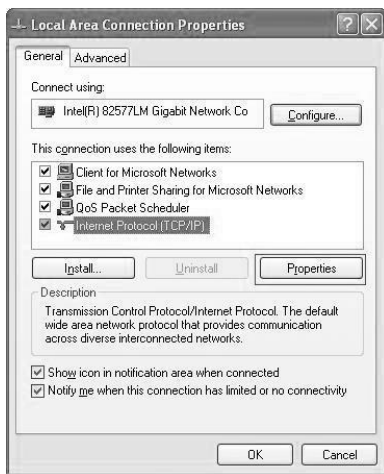


Figure 3.2

5. Again a new window titled "Internet Protocol (TCP/IP) Properties" will pop up. In this window, you need to select

"Use the following IP Address" radio button, and set the specific IP address (take the value shown in Figure 3.3 for example), then click on "OK".

**NOTE: For specific IP address information please contact your network administrator.**

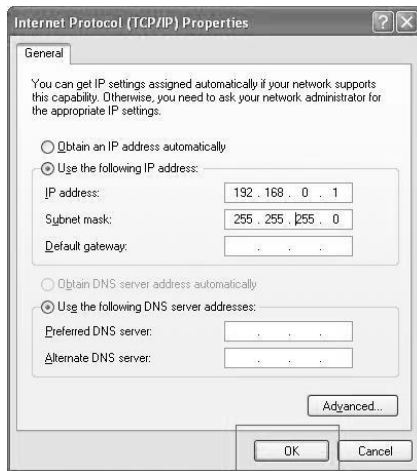


Figure 3.3

6. After all the above properties settings have been properly set, users can continue on completing the network configuring procedure, please refer to the detailed operation guidance in **3.2.2. MaxiFlash Configuration – Wired Network.**

- **Connecting to an Existing LAN**

1. Connect the Pass-Thru device to a local network with the supplied Ethernet Cable.
2. On most LANs, MaxiFlash Pro can obtain its IP address automatically using DHCP.

### 3.2.2 MaxiFlash Configuration – Wired Network

- 1) Connect the Pass-Thru device to the PC or an existing LAN with

the supplied Ethernet cable.

- 2) Power up the device by the external power supply; verify the green Power status light on the front panel is on.
- 3) Verify the Ethernet status lights at the Ethernet port bottom are on. (One illuminates solid orange, the other flashes green light.)
- 4) Click on “All Programs” from Windows Start Menu, find the “Maxi Flash” entry under “Autel intelligent tec inc”, click on “MaxiFlashCFG”, and wait for the program interface to pop up. (Figure 3.4)



Figure 3.4

[Net: Wire] – Indicates wired network connection between the device and PC.

[Net: Wireless] – Indicates wireless network connection between the device and PC.

[Power: Off/On] – Turn On/Off the wireless connection (for wireless only).

[Mode: DHCP] – Allows automatic network configuring.

[Mode: Manual] – Allows manual network configuring.



[Operate: Set Config] – Sets the network configuration of the Pass-Thru device.

[Operate: Get Config] – Obtains the saved network configuration from the Pass-Thru device.

- 5) Click on “Wire” in “Net” column.
- 6) Select “DHCP” in “Mode” column, if you are connecting to the local area network, the MaxiFlash Pro will obtain the IP address automatically. Select “Manual” in “Mode” column, if you are connecting to the PC directly for the first time, and then set the IP address on your own. (Take the value shown in Figure 3.5 for example).
- 7) Select “Set Config” in “Operate” column to allow setting the network configuration through PC application.
- 8) Click on “OK” button to save the network configuration.

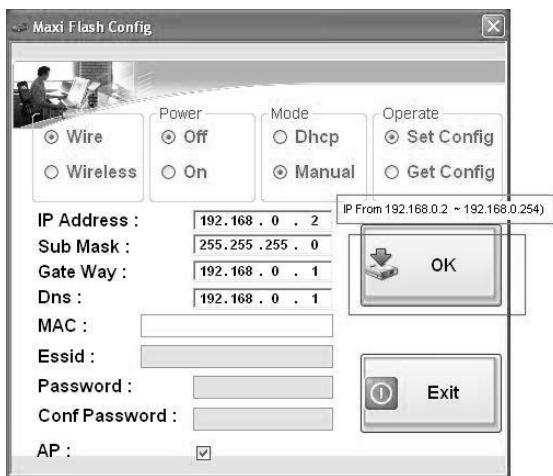


Figure 3.5

### 3.2.3 MaxiFlash Configuration – Wireless Network

- 1) Power up the device by the external power supply; verify if the green **Power** status light at the front panel is on.

- 2) Click on “All Program” from Windows Start Menu, find the “Maxi Flash” entry under “Autel intelligent tec inc”, click on “MaxiFlashCFG”, and wait for the program interface to pop up. (Figure 3.4)
- 3) Click on “Wireless” in “Net” column.
- 4) Select “On” in “Power” column to turn on wireless connection.
- 5) Select “DHCP” in “Mode” column to enable MaxiFlash Pro to obtain the IP address automatically. Select “Manual” to set the IP address on your own.
- 6) Select “Set Config” in “Operate” column to allow setting the network configuration through PC application.
- 7) Fill in the specific ESSID and Password information of your wireless network, and click “OK” button to save the network configuration.

### **3.2.4 Setup Pass-Thru Device as Wi-Fi Hotspot**

By ticking the “AP” - (Access Point) - option at the bottom of the “Maxi Flash Config” interface window, this function will setup the Pass-Thru device to serve as a Wi-Fi hotspot itself, which will allow other PCs to access to the device network directly through wireless connection.

- 1) Select “Set Config” in “Operate” column to allow setting the network configuration through PC application.
- 2) Tick on the “AP” option at the bottom of the interface window.
- 3) Fill in a custom ESSID name, e.g. MaxiFlash Pro, or other ID name you like.
- 4) Set a custom network access password.

***NOTE: The program default setting requires the password to be either of 5 or 13 characters, which is case sensitive.***

- 5) Click on “OK” button to save the wireless AP configuration.

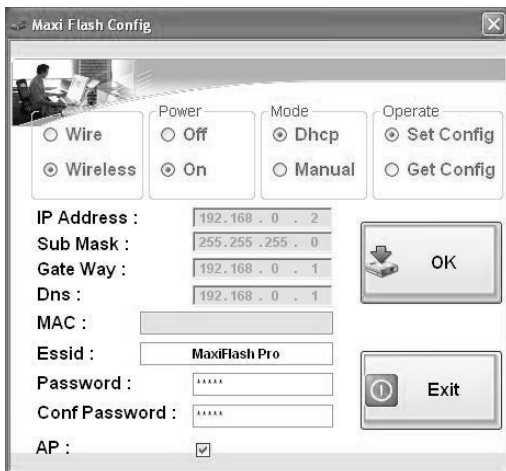


Figure 3.6

## 4. Reprogramming with J2534 device

To reprogram vehicles using OEM software, you can find a list below of websites that offer subscription software, or visit <http://etools.org/> website to find out more ECU re-flash applications from the OEMs.

Using additional OEM software, the MaxiFlash Pro can be used as a Pass-Thru diagnostics tool as well, which allows users to read and clear Diagnostic Trouble Codes(DTCs) and data log PIDS, collect sensor data and log generic OBDII data etc.

Since J2534 allows multiple devices to be connected at once, you must tell the software you want to use the MaxiFlash Pro. Every application will have a different way to select the device, so please consult the software manual.

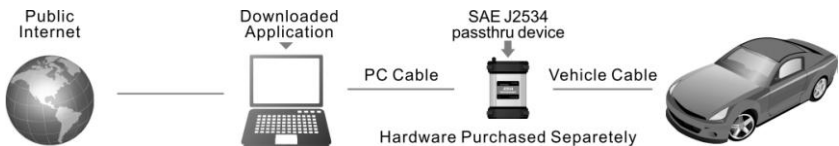



TABLE 4 – LIST OF AUTOMAKERS’ SERVICE WEBSITES

Automaker	Website
BMW	<a href="http://www.bmwtechinfo.com/">http://www.bmwtechinfo.com/</a>
Mini	<a href="http://www.minitechinfo.com/">http://www.minitechinfo.com/</a>
Porsche	<a href="http://www.porsche.com/">http://www.porsche.com/</a>
Chrysler, Jeep, Dodge	<a href="http://www.techauthority.com/">http://www.techauthority.com/</a>
Ford, Lincoln, Mercury,	<a href="http://www.motorcraft.com/">http://www.motorcraft.com/</a>
Land Rover	<a href="http://www.landroverttechinfo.com/">http://www.landroverttechinfo.com/</a>

Automaker	Website
Volvo	<a href="http://www.volvotechinfo.com/">http://www.volvotechinfo.com/</a>
Cadillac, Chevrolet, Daewoo, GM, GEO, Pontiac, Buick, Saturn, SAAB	<a href="http://www.gmtechinfo.com/">http://www.gmtechinfo.com/</a>
Acura, Honda	<a href="http://www.serviceexpress.honda.com/">http://www.serviceexpress.honda.com/</a>
Isuzu	<a href="http://www.isuzutechinfo.com/">http://www.isuzutechinfo.com/</a>
Mazda	<a href="http://www.mazdaserviceinfo.com/">http://www.mazdaserviceinfo.com/</a>
Mercedes	<a href="http://www.startekinfo.com/">http://www.startekinfo.com/</a>
Mitsubishi	<a href="http://www.mitsubishitechinfo.com/">http://www.mitsubishitechinfo.com/</a>
Nissan	<a href="http://www.nissan-techinfo.com">http://www.nissan-techinfo.com</a>
Toyota, Lexus, Scion	<a href="http://techinfo.toyota.com/">http://techinfo.toyota.com/</a>
Volkswagen	<a href="http://www.erwin.volkswagen.de/erWinVW">http://www.erwin.volkswagen.de/erWinVW</a>
Audi	<a href="http://erwin.audi.de/erWinAudi">http://erwin.audi.de/erWinAudi</a>

 **NOTE:** *When reprogramming onboard, always make sure the vehicle battery is fully charged and in good working condition. During reprogramming there is a risk of having the operation failure if voltage falls below the proper operating voltage. Sometimes a failed operation can be recovered, but there is a chance that failed reprogramming could ruin the control module. We recommend connecting an external battery charger to the vehicle to ensure a successful operation.*

## 5. Software Update

This function allows you to update the Pass-Thru device driver software through the PC.

### ◆ Get Registration Information

The Product Serial No. and Register Password are written in the device memory; users can get the product registration information from the PC once the J2534 device has been verified through the internet.

1. Install the device CD update program.
2. Connect the device to the PC via USB/Ethernet/Wi-Fi.
3. Ensure your PC is connected with the Internet, the device update program will automatically verify if the device has been registered or not.
4. If the device is verified as new and has not been registered, a pop-up window will prompt to show the Product Serial No. and Register Password.

### ◆ Register the Tool

User could update the device software **ONLY** after you had registered the tool on our website: [www.maxidas.com](http://www.maxidas.com). Then you could download software, update online, retrieve information and get warranty service.

✍ **NOTE:** *Prior to registration, please confirm your network is working properly.*

1. Log on the website [www.maxidas.com](http://www.maxidas.com).
2. Click on the **Update** tool bar at the top of the screen, and then select **User Register**. Or click on the **Updates** column in the lower right corner of the screen, and select **Register**.

3. The screen of **Register Information** appears. Please read through the instructions, and click on **Agree** to continue.
4. Put in the Product **Serial No.** and **Register Password**, and click on **Next**. (Figure 5.1)
5. Follow the instructions on screen to finish the registration.

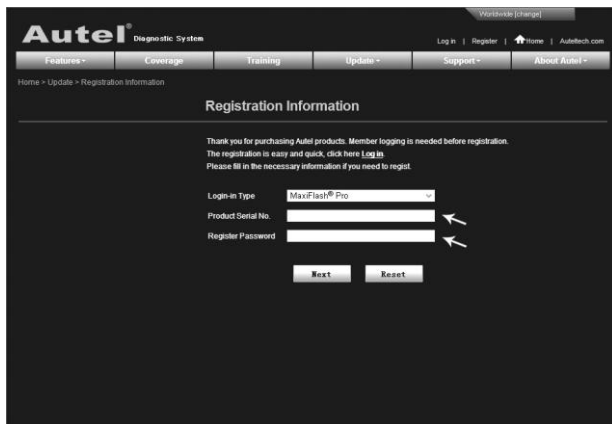


Figure 5.1

## ◆ Update Online

Autel frequently releases software updates that you can download. The Update feature makes it very easy to determine and get exactly what you need.

1. Power up the Pass-Thru device and connect to the PC via USB, Ethernet or Wi-Fi.
2. After registering product on Autel website: [www.maxdas.com](http://www.maxdas.com)., click on the **Update** tool bar at the top of the screen, and then select **Software**.
3. Find out the latest released software version, click on the download icon on the right of the selected item. (Figure 5.2)

4. A **File Download** window will pop up, click on **Run** to start installing the update software, or **“Save”** the file to a dedicated file, and then click on the .EXE file to install.
5. Now the Pass-Thru device program is up to date and ready for use.

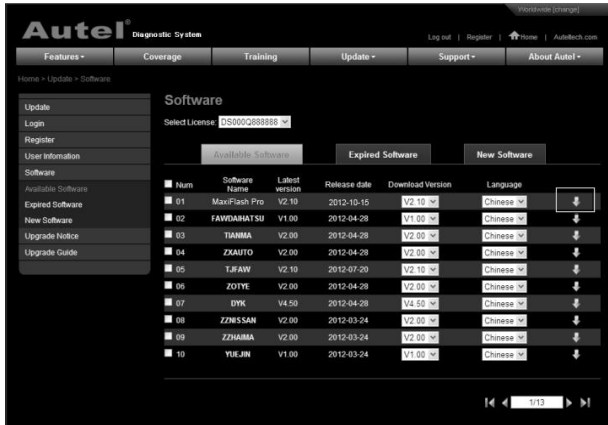


Figure 5.2



## **6. Warranty and Service**

### **6.1 Limited One Year Warranty**

Autel warrants to its customers that this product will be free from all defects in materials and workmanship for a period of one (1) year from the date of the original purchase, subject to the following terms and conditions:

- 1) The sole responsibility of Autel under the Warranty is limited to either the repair or, at the option of Autel, replacement of the Pass-Thru device at no charge with Proof of Purchase. The sales receipt may be used for this purpose.
- 2) This warranty does not apply to damages caused by improper use, accident, flood, lightning, or if the product was altered or repaired by anyone other than the Manufacturer's Service Center.
- 3) Autel shall not be liable for any incidental or consequential damages arising from the use, misuse, or mounting of the device. Some states do not allow limitations on how long an implied warranty lasts, so the above limitations may not apply to you.
- 4) All information in this manual is based on the latest information available at the time of publication and no warranty can be made for its accuracy or completeness. Autel reserves the right to make changes at any time without notice.

### **6.2 Service Procedures**

If you have any questions, please contact your local store, distributor or visit our website at [www.auteltech.com](http://www.auteltech.com).

If it becomes necessary to return the tool for repair, contact your local distributor for more information.

**FCC Statement**

NOTE: This equipment has been tested and found to comply with the limits for a Class B digital device, pursuant to Part 15 of the FCC Rules. These limits are designed to provide reasonable protection against harmful interference in a residential installation. This equipment generates, uses and can radiate radio frequency energy and, if not installed and used in accordance with the instructions, may cause harmful interference to radio communications. However, there is no guarantee that interference will not occur in a particular installation. If this equipment does cause harmful interference to radio or television reception, which can be determined by turning the equipment off and on, the user is encouraged to try to correct the interference by one or more of the following measures:

- Reorient or relocate the receiving antenna.
- Increase the separation between the equipment and receiver.
- Connect the equipment into an outlet on a circuit different from that to which the receiver is connected.
- Consult the dealer or an experienced radio/TV technician for help.

This device complies with part 15 of the FCC Rules. Operation is subject to the following two conditions:

(1) This device may not cause harmful interference, and (2) this device must accept any interference received, including interference that may cause undesired operation

Changes or modifications not expressly approved by the party responsible for compliance could void the user's authority to operate the equipment.

The distance between EUT and user should be no less than 20cm.