

Table of Contents

General Notice	1
Introduction	2
Functional Description	4
Product Troubleshooting.....	7
Driver Setup	8
Firmware Update	11
Compliance Information	13
Warranty And Service	15

General Notice

The Wireless Diagnostic Interface has been carefully designed and tested to comply with OBDII protocols. However, some vehicle models are not in full compliance with these protocols for various reasons. In addition, the computer control systems or sensors on any given vehicle may be malfunctioning.

While Autel's testing and the experiences of the users have shown the unit to be safe and reliable, there is an inherent risk in using any product that may potentially affect the operation or drive-ability of your vehicle.

If you are concerned about the operation of your vehicle at any time while using the Wireless Diagnostic Interface:

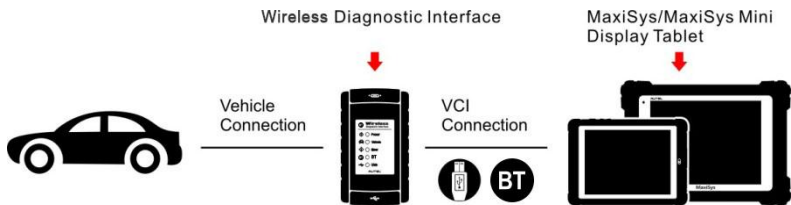
- Pull off the roadway immediately or as soon as it is safe to do so.
- Disconnect the device from the OBDII port.
- Consult a licensed mechanic or automobile service center.

Contact your local distributor, or visit www.autel.com for issues or concerns about the product. We maintain an active database of the feedback we receive, and your comments can help us continuously improve the product.

Introduction

The Wireless Diagnostic Interface is a multi-brand device which comes with the MaxiSys tool kit. It is designed to connect wirelessly with the MaxiSys Display Tablet, as well as standalone PC, as a vehicle communication interface (VCI) for vehicle data transmission. Thanks to the wireless BT technology, with which you are allowed to work freely around the vehicle.

This interface device can communicate with vehicles' electronic control units (ECUs), guaranteeing performance and speed that redefine multi-brand diagnostics. The development of this interface has been focused on reducing the communication time, and ensuring the tool is practical to use.



MAXISYS DIAGNOSTIC PLATFORM

The MaxiSys diagnostic platform combines the VCI device and the display tablet with technical information into a single program, ensuring quick and simple access to the vehicle to perform comprehensive diagnostics applications.

Wireless Communication

The Wireless Diagnostic Interface supports BT communication. It can transmit vehicle data to the MaxiSys Display Tablet without a physical connection. The working range of the transmitter through BT communication is about 755 feet (about 230 m). A signal lost due to moving out of range automatically restores itself when the display unit is brought closer to the VCI unit.

For detailed information about VCI connection with the MaxiSys display tablet, please refer to the MaxiSys User Manual.

USB Connectivity

The VCI device also provides a direct connection to the MaxiSys display tablet or a PC via a USB 2.0 full-speed connection. All of the electronics are contained in the device shell, making it a compact and rugged vehicle communication tool.

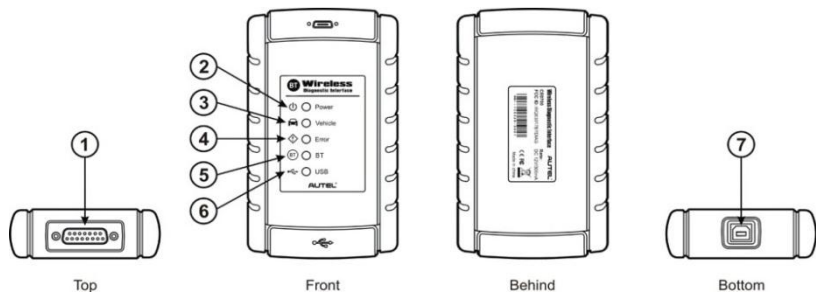
Power Source

The Wireless Diagnostic Interface operates on 12-volt vehicle power, which it receives through the vehicle data connection port. The unit powers on whenever it is connected to an OBD II/EOBD compliant data link connector (DLC).

It can also be powered through connection with a PC via the USB cable, so there's no need to connect the device to the vehicle when performing firmware update through the PC.

Functional Description

The Wireless Diagnostic Interface device package, which includes the unit, user manual, and a CD with driver program and update agent, comes along with the MaxiSys/MaxiSys Mini tool kit. Please refer to the MaxiSys User Manual for additional information.



1. Vehicle Data Connector (DB15-Pin)
2. Power LED
3. Vehicle LED
4. Error LED
5. BT LED
6. USB LED
7. USB Port

Vehicle Data Connector

The vehicle connector connects the device to the vehicle's DLC via a standard DB15 – Pin OBD II cable.

Status LEDs

There are 5 status LEDs on the front panel of the VCI device, which indicates its working status as well as the hardware conditions, and are very useful for troubleshooting the device's communication or connection to the Vehicle, display tablet and/or the PC. See [Table 1](#) for detailed description of the status LEDs.

Table 1 – Status LEDs on the Front Panel

LED	Description
Power	Illuminates solid green when powered on.
Vehicle	Flashes green when communicating with the vehicle's network.
Error	Illuminates solid red when serious hardware failure occurs; also flashes red when performing firmware update.
BT	Illuminates solid green when connected with the MaxiSys display tablet through BT communication; also flashes green when transmitting data between the vehicle and the display tablet.
USB	Illuminates solid green when the device is properly connected, and communicating with the MaxiSys display tablet or the PC via the USB cable

USB Port

The USB port provides the easiest connection between the device and the display tablet or the PC via a USB cable, and is used to control the device from the software application running on the PC.

Technical Specifications

Item	Description
Communications	<ul style="list-style-type: none">• BT V.2.1 + EDR• USB 2.0
Wireless Frequency	2.4 GHz
Input Voltage Range	12 VDC
Supply Current	200 mA @ 12 VDC
Operating Temperature	0°C to 50°C (ambient)
Storage Temperature	-20°C to 70°C (ambient)
Dimensions (L x W x H)	147.5 mm (5.80") x 85.5 mm (3.37") x 29.0 mm (1.14")
Weight	0.208 kg (0.459 lb)

Capabilities

When used in conjunction with the display table or the OEM softwares from the PC, the Wireless Diagnostic Interface device is able to perform the following functions:

- Auto diagnostics to read and clear the error memory, to display system parameters and the status of the ECU;
- Activation, adjustments and configurations that are essential for ensuring a complete repair;
- Resetting the service lights or the airbag systems;
- Configuration of the ECUs, keys and remote controls, etc.

Product Troubleshooting

This part describes problems that you may encounter while using the VCI device.

Vehicle Linking Error

A communication error occurs if the interface device fails to communicate with the vehicle's control module when performing diagnostic procedures. You need to do the following check-ups:

- ✓ Verify that the ignition is ON.
- ✓ Check if the interface device's OBD II connector is securely connected to the vehicle's DLC.
- ✓ Turn the ignition off and wait for about 10 seconds. Turn the ignition back to on and continue the operation.
- ✓ Verify the control module is not defective.

PC Communication Error

- ✓ Verify the interface device is powered, and the green power LED is illuminated.
- ✓ Check if there is any firewall software interfering with the connection port.
- ✓ Check if the green status light is illuminated for USB communication.

If these issues have been addressed, verified, and you are still having trouble, please contact technical supports for assistance. Refer to the MaxiSys User Manual for additional information.

Driver Setup

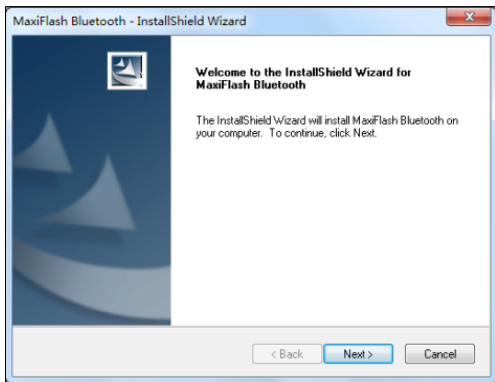
In order for the Wireless Diagnostic Interface device to operate correctly with the diagnostic applications on the PC, you will need to first install the device's driver onto the PC that controls the device.

The program package requires Windows XP, Windows 7 (32-bit or 64-bit), or Windows 8 (32-bit or 64-bit), or Windows 10 (32-bit or 64-bit)

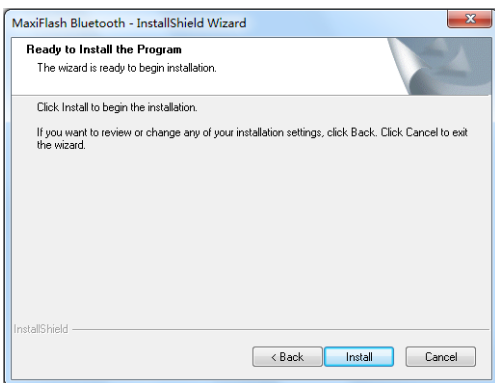
IMPORTANT: Do not plug the interface device onto the PC until you have installed the driver program.

The following steps may vary depending on the operating system or components that are installed on your computer, but in general this is the standard installation process.

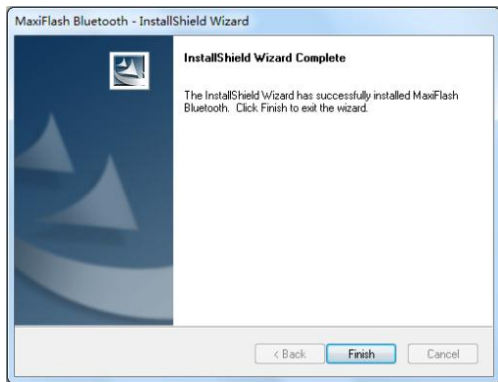
- 1 Insert the CD that came with the MaxiSys tool kit into the CD/DVD slot of the PC and open the CD folder.
- 2 Double click on “**Autel Run.exe**” item.
- 3 Click the **Wireless Diagnostic Interface** icon in the MaxiSys PC Suite screen.
- 4 Select the installation language and the driver installation wizard will load momentarily.
- 5 Follow the wizard instructions on the screen and click “**Next**” to continue.



- 6 Click on **"Install"** and the driver program will be installed onto your PC.



- NOTE: During this part of the process a MS-DOS style window will pop up and may remain on your screen for a short while, which is perfectly normal. Do not attempt to close the MS-DOS style window manually as this will prevent the device driver being installed successfully. It will close automatically when the device driver installation is complete.
- 7 When the driver is successfully installed, a confirm window will appear. Click on “**Finish**” to complete the whole installation procedure.



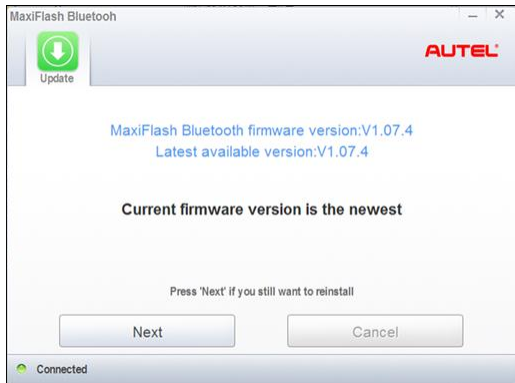
Firmware Update

Autel periodically releases updates to the device's drivers. Updates are necessary to solve specific problems and to ensure the VCI device is working properly with the OEM software. If you are experiencing any problems during use, always make sure that you have the latest device software and drivers.

Update Online

This function allows you to update the driver software for the device through the PC. Make sure the PC is connected to the Internet before using this function.

- 1 Connect the MaxiFlash Bluetooth to the PC via the USB cable.
- 2 Verify the Power and USB LEDs on the front panel are illuminated.
- 3 From Windows Start Menu, find and double click the **“MaxiFlash Bluetooth”** icon, wait for the program interface to pop up.



- 4 The update agent will automatically check for the available update online.
- 5 Press the “**Next**” button to install the newest firmware.
- 6 Press the “**Cancel**” button to exit.

Compliance Information

FCC COMPLIANCE

FCC ID: WQ82015BTDIAG

This device complies with Part 15 of the FCC Rules. Operation is subject to the following two conditions:

- (1) This device may not cause harmful interference, and
- (2) this device must accept any interference received, including interference that may cause undesired operation.

Warning: Changes or modifications not expressly approved by the party responsible for compliance could void the user's authority to operate the equipment.

NOTE: This equipment has been tested and found to comply with the limits for a Class B digital device, pursuant to Part 15 of the FCC Rules. These limits are designed to provide reasonable protection against harmful interference in a residential installation.

This equipment generates uses and can radiate radio frequency energy and, if not installed and used in accordance with the instructions, may cause harmful interference to radio communications. However, there is no guarantee that interference will not occur in a particular installation. If this equipment does cause harmful interference to radio or television reception, which can be determined by turning the equipment off and on, the user is encouraged to try to correct the interference by one or more of the following measures: i . Reorient or relocate the receiving antenna. ii . Increase the separation between the equipment and receiver. iii. Connect the equipment into an

outlet on a circuit different from that to which the receiver is connected. iv.
Consult the dealer or an experienced radio/TV technician for help.

FCC Radiation Exposure Statement:

This equipment complies with FCC radiation exposure limits set forth for an uncontrolled environment. This equipment should be installed and operated with minimum distance 20cm between the radiator & your body.

RoHS COMPLIANCE

This device is declared to be in compliance with the European RoHS Directive 2011/65/EU.

CE COMPLIANCE

This product is declared to conform to the essential requirements of the following Directives and carries the CE mark accordingly:

EMC Directive 2014/30/EU

R&TTE Directive 2014/53/EU

Low Voltage Directive 2014/35/EU

Warranty And Service

Limited One Year Warranty

Autel warrants to its customers that this product will be free from all defects in materials and workmanship for a period of one (1) year from the date of the original purchase, subject to the following terms and conditions:

- 1) The sole responsibility of Autel under the Warranty is limited to either the repair or, at the option of Autel, replacement of the device at no charge with Proof of Purchase.
- 2) This warranty does not apply to damage due directly or indirectly, to misuse, abuse, negligence or accidents, repairs or alterations outside our Service Center or facilities, criminal activity, improper installation, normal wear and tear, or to lack of maintenance.
- 3) Autel shall not be liable for any incidental or consequential damages arising from the use, misuse, or mounting of the device. Some states do not allow limitations on how long an implied warranty lasts, so the above limitations may not apply to you.
- 4) All information in this manual is based on the latest information available at the time of publication and no warranty can be made for its accuracy or completeness. Autel reserves the right to make changes at any time without notice.

Service Information

If you have any questions, please contact your local distributor or visit our website at www.autel.com.

If it becomes necessary to return the tool for repair, contact your local distributor for more information.