

材质：封面封底**128G**双铜 + 单色印刷
 内页臻品上质**80g**高白纸 2个小号骑马钉
 大约**16**页， 尺寸**W 105 x H 75mm**



User Manual

USB Bluetooth Audio Transmitter

Avantree leaf



Scan for more FAQs

www.avantree.com

Contents

- 1. Features & AptX Low Latency - - - - - 1
- 2. Product Overview - - - - - 3
- 3. User Tips - - - - - 4
- 4. Pair and connect to Bluetooth headphone/receiver - - - - - 4
- 5. LED indications - - - - - 7
- 6. How to stream music? - - - - - 8
- 7. How to make a VOIP call? - - - - - 10
- 8. Restore Factory Default Settings - - - - - 11
- 9. Product Specifications - - - - - 12

1. Features & AptX Low Latency

Avantree leaf is a Bluetooth audio transmitter incorporating the latest "AptX low latency" technology, for CD-like quality sound with virtually no delay. Ideal for games, watching movies on PC/iMac without lip sync delay. Also, with multipoint support, you can share the fun and enjoyment of audio with others.

aptX® Low Latency

To take advantage of the better performance of the APTX Low Latency Codec, the receiver must support the same codec. If the receiver only supports the normal AptX codec, or the SBC one, these codecs will be used instead. Due to Bluetooth technology limitation, aptX Low Latency codec does NOT support under dual link.

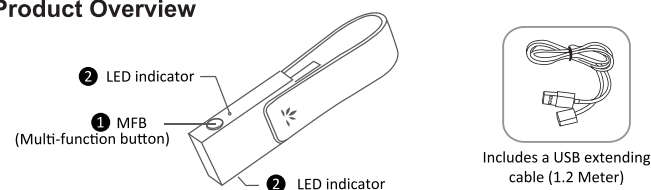
- 1 -

Audio delay when paired with different headphones/receiver-

Headphones/receiver support	The audio delay will be
aptX Low Latency codec	Around 40ms
aptX codec	Around 180ms
SBC codec (most standard Bluetooth audio)	Around 250ms

- 2 -

2. Product Overview



FUNCTIONS

Set leaf to pairing mode – Hold for 2 seconds until ② rapidly alternates BLUE and WHITE

Manually reconnect – Press once or twice

① MFB
 Make a VOIP call – Double click ① to enable TALK MODE, ② illuminates white (Once the call has finished, double click ① again to return to music streaming)

Reset leaf – In pairing mode, double click ① until ② flashes BLUE and WHITE together for 2 seconds

- 3 -

3. User Tips

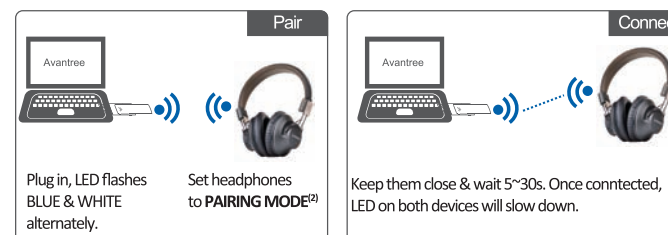
- (1) Leaf cannot be use with TV.
- (2) To get better operational range, please don't hang leaf behind the computer. We suggest using Avantree headphones to get the best Bluetooth stability and range.
- (3) An unclean USB port can result in a crackly/static-like sound. Carefully clean the port, either using a nylon anti-static ESD brushes, or changing to another cleaner port should fix the problem

4. Pair and connect to Bluetooth headphone/receiver

Step 1: The first time you plug leaf into computer USB port, the PC will install drivers⁽¹⁾ automatically.

- 4 -

- Step 2:** Set Leaf to **PAIRING MODE** – The first time the leaf is used it will auto enter pairing mode, **LED flashes BLUE and WHITE** alternately, if it doesn't, please hold MFB for 3 seconds.
- Step 3:** Set your headphones/receiver to **PAIRING MODE**⁽²⁾. Keep the devices in close proximity to each other and wait until the LEDs indicating pairing has completed.



- 5 -

- (1) Driver:** Software will be installed automatically each time Leaf is inserted into different USB ports of PC/laptop. This will not happen on subsequent connections.
- (2) PAIRING MODE:** Discoverable mode, LED flashes very quickly or flashes two colors alternately.

Reconnection: usually once you turn on your headphones/receiver, it will automatically reconnect to leaf. Otherwise, please try to press the MFB once on the Leaf to reconnect them.

- 6 -

5. LED indications

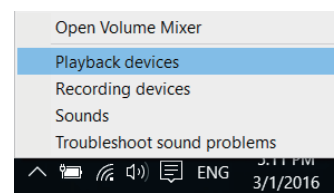
Status	LED indicator
Pairing mode	LEDs blink BLUE and WHITE alternately
Connected with SBC codec	LED flashes BLUE 2 times every 5 seconds
Connected with aptX codec	LED flashes WHITE 1 times every 5 seconds
Connected with aptX-LL codec	LED flashes WHITE 2 times every 5 seconds
Disconnected	LED flashes BLUE once every 5 seconds
Restored factory default settings	LED flashes BLUE & WHITE together for 2 second
Call mode	LED keeps on WHITE

- 7 -

6. How to stream music?

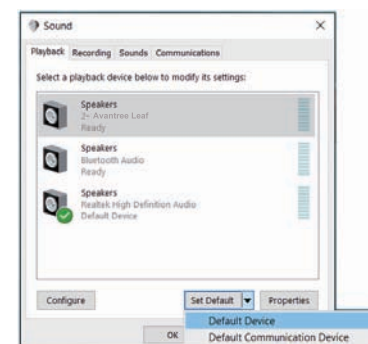
Ensure your Bluetooth headphones and Leaf are connected. And then set Leaf as default playback device on computer.

Step 1. Right-click the speaker icon on right-corner of screen. And select "Playback devices".



- 8 -

Step 2. Set "Avantree Leaf" as "Default Device".



Now you can streaming music or watching movie.

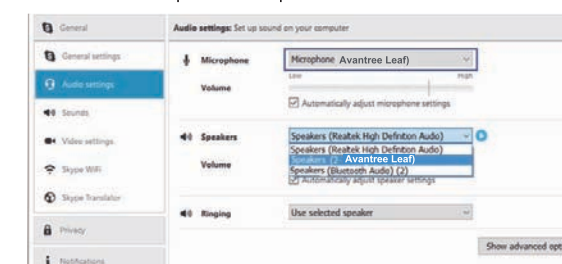
- 9 -

7. How to make a VOIP call?

Ensure your Bluetooth headphones and leaf are connected.

Step 1: Switch leaf to CALL MODE – double click the MFB, the WHITE LED should remain lit.

Step 2: Open the Skype or other APP audio settings, and select "Avantree Leaf" as current microphone and speaker device.



- 10 -

ow you can make a VOIP call.

Note: Once call ended, please double click the MFB again to switch leaf back to MUSIC MODE.

8. Restore Factory Default Settings

You may need to reset leaf if it is not working as expected. When leaf is reset to factory default settings, all the paired device information will be erased.

Step 1: Set Leaf to PAIRING MODE – press and hold MFB for 2 seconds until the LED alternates BLUE and WHITE rapidly.

Step 2: Double click the MFB, the BLUE and WHITE LEDs are both on for 2 seconds. Then Leaf will automatically enter pairing mode.

- 11 -

9. Product Specifications

- Bluetooth version: 4.1
- Bluetooth profile: A2DP, HFP, HSP, AVRCP
- Audio codec: aptX-LL, aptX, SBC
- Operating range: Up to 20 meters in open area without any obstructions
- Product weight: approx. 10g
- Product size: 66mm(L) x 18mm(W) x 15mm(H)

Video user guide for Leaf available on Youtube.com

Telephone support: booking from Avantree.com

More FAQs and instructions on support.avantree.com

Email support: support@avantree.com

- 12 -

This device complies with part 15 of the FCC Rules. Operation is subject to the condition that this device does not cause harmful interference (1) this device may not cause harmful interference, and (2) this device must accept any interference received, including interference that may cause undesired operation.Changes or modifications not expressly approved by the party responsible for compliance could void the user's authority to operate the equipment. **NOTE:** This equipment has been tested and found to comply with the limits for a Class B digital device, pursuant to Part 15 of the FCC Rules. These limits are designed to provide reasonable protection against harmful interference in a residential installation. This equipment generates, uses and can radiate radio frequency energy and, if not installed and used in accordance with the instructions, may cause harmful interference to radio communications. However, there is no guarantee that interference will not occur in a particular installation.If this equipment does cause harmful interference to radio or television reception, which can be determined by turning the equipment off and on, the user is encouraged to try to correct the interference by one or more of the following measures:

- Reorient or relocate the receiving antenna.
- Increase the separation between the equipment and receiver.
- Connect the equipment into an outlet on a circuit different from that to which the receiver is connected.
- Consult the dealer or an experienced radio/TV technician for help.

Dispose of the packaging and this product in accordance with the latest provisions.



FCC ID: 2A1TF-BTDG50



www.avantree.com
support@avantree.com
 Z-PKMN-DG50-V1