

# User Manual

## Wireless Music Receiver

### Roxa Plus

BTRC-300L EN--- Page01  
IT --- Page10  
FR--- Page18  
DE--- Page26  
ES--- Page34

[www.avantree.com](http://www.avantree.com)



Scan for video user guide

English

## Contents

1. AptX Low Latency .....	1
2. Product overview .....	2
3. What's in the box? .....	2
4. Pairing and connecting .....	3
4.1. Connecting to a mobile phone/tablet .....	3
4.2. Connecting to a Bluetooth transmitter .....	4
5. Reconnecting .....	5
6. LED indications .....	5
7. How to get the maximum range .....	6
8. Product Specifications .....	7
9. Safety information .....	8

## 1. AptX Low Latency

Avantree Roxa Plus is a Bluetooth audio receiver incorporating the latest "aptX low latency" technology, for CD-like quality sound and with virtually no audio delay. It is ideal for games, watching TV and movies without Lip sync delay.

### aptX® Low Latency

To take advantage of the better performance offered by APTX Low latency codec, the other device must also support the same codec (Such as Avantree's Saturn Pro, Priva II, Leaf, etc). If the transmitter only supports the normal AptX codec, or the SBC one, these codecs will be used instead.

#### Audio delay by transmitter type:

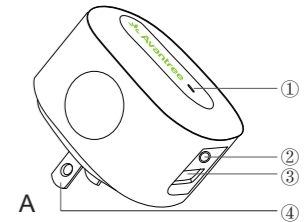
Transmitter support -	The audio delay will be
aptX Low Latency codec	Around 40ms
aptX codec	Around 180ms
SBC codec (most standard Bluetooth audio)	Around 250ms

- 1 -

English

## 2. Product overview

- 1) LED indicator
- 2) 3.5 mm audio socket
- 3) 5V/1A USB charging port
- 4) AC plug(US / EU / UK Pin optional)



## 3. What's in the box?

- A. Avantree Roxa Plus
- B. 3.5mm to 3.5mm audio cable
- C. 3.5mm to RCA audio cable
- D. User manual

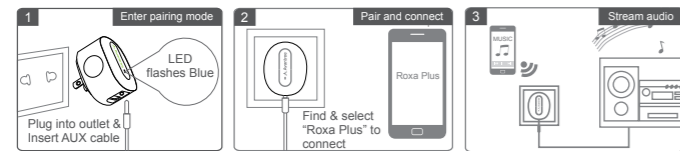


- 2 -

## 4. Pairing and connecting

### 4.1. Connecting to a mobile phone/tablet

- Step 1. Power on** - plug Roxa Plus into AC outlet, the LED will light to RED.  
**Step 2. Activate Bluetooth (Entering pairing mode)** - plug 3.5mm audio cable into Roxa Plus, LED shows BLUE for 1 second and Roxa Plus will go into pairing mode automatically after 5 seconds - LED flashes BLUE every 5 seconds.  
**Step 3.** Plug the other end of 3.5mm audio cable or RCA cable into your home sound system.  
**Step 4.** Active Bluetooth on your phone/tablet, search and select "Roxa Plus" to pair and connect. Once connected, the LED of Roxa Plus will light up BLUE. Then you can enjoy music wireless.



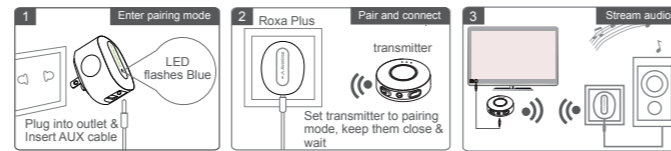
**Note:** If you want to connect to second phone/tablet, please disconnect the first device.

- 3 -

English

### 4.2. Connecting to a Bluetooth transmitter

- Step 1. Power on** - plug Roxa Plus into AC outlet, the LED will light to RED.  
**Step 2. Activate Bluetooth and get Roxa Plus into pairing mode** - plug 3.5mm audio cable into Roxa Plus and after 5 seconds. Roxa Plus will go into pairing mode automatically- LED flashes BLUE every 5 seconds.  
**Step 3.** Plug the other end of 3.5mm audio cable or RCA cable into your home sound system.  
**Step 4.** Power on and set your Bluetooth transmitter to **PAIRING MODE**  
**Step 5.** Keep the devices close and wait for 5~30 seconds. Once connected, the LED of Roxa Plus will light up BLUE. Then you can enjoy music wireless.



**\*PARING MODE:** Discoverable mode for Bluetooth device, normally the LED blinks quickly or flashes between two colors alternately.

- 4 -

## 5. Reconnecting

For phone/tablet, once disconnect, please select and tap "Roxa Plus" from the Bluetooth device list on your phone /tablet to reconnect manually.  
 For transmitter, once disconnect, please power on your transmitter or press MFB(multifunctional button) once on transmitter again and set to pairing mode.

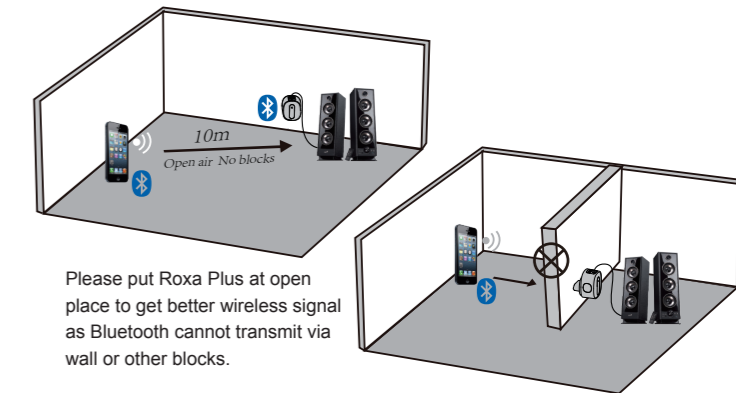
## 6. LED indications

Status of Receiver	LED indicator
Powered on but Bluetooth not activated	LED shows steady <b>RED</b>
Activate Bluetooth	LED shows <b>BLUE</b> for 1 second
Pairing mode and disconnect	LED flashes <b>BLUE</b> every 5 seconds
Connected	LED shows steady <b>BLUE</b>

- 5 -

English

## 7. How to get the maximum range



Please put Roxa Plus at open place to get better wireless signal as Bluetooth cannot transmit via wall or other blocks.

- 6 -

## 8. Product Specifications

- Specifications**  
**Wireless receiver**  
 • BT version: 4.2  
 • Support profile: A2DP  
 • Support codec: SBC, AAC, aptX and aptX Low Latency,  
 • Operational range: Class II, up to 10 meters

- AC Power**  
 • Input voltage: AC100-240V 50/60Hz  
 • USB output voltage/Current:5V/1000mA  
 • Main body size without AC plug: 54\*45\*26mm  
 • Product weight : around 55g

- 7 -

English

## 9. Safety Information

This device complies with part 15 of the FCC Rules. Operation is subject to the following two conditions: (1) this device may not cause harmful interference, and (2) this device must accept any interference received, including interference that may cause undesired operation.Changes or modifications not expressly approved by the party responsible for compliance could void the user's authority to operate the equipment.

**NOTE:** This equipment has been tested and found to comply with the limits for a Class B digital device, pursuant to Part 15 of the FCC Rules. These limits are designed to provide reasonable protection against harmful interference in a residential installation. This equipment generates, uses and can radiate radio frequency energy and, if not installed and used in accordance with the instructions, may cause harmful interference to radio communications. However, there is no guarantee that interference will not occur in a particular installation.If this equipment does cause harmful interference to radio or television reception, which can be determined by turning the equipment off and on, the user is encouraged to try to correct the interference by one or more of the following measures:

- 8 -

- Reorient or relocate the receiving antenna.
- Increase the separation between the equipment and receiver.
- Connect the equipment into an outlet on a circuit different from that to which the receiver is connected.
- Consult the dealer or an experienced radio/TV technician for help.

FCC ID: 2A1TF-BTRC-300L

To maintain compliance with FCC's RF Exposure guidelines, This equipment should be installed and operated with minimum 20cm distance between the radiator and your body: Use only the supplied antenna.

Dispose of the packaging and this product in accordance with the latest provisions.



- 9 -

English