

User Manual

Bluetooth Audio Transmitter/Receiver 2-in-1

Avantree New Saturn Pro



www.avantree.com

Any questions? Contact:

Support@avantree.com (Response Time: 4-24h, excl. holidays)

Telephone Support (Mon-Fri):

- USA / CANADA +1 800 232 2078 (EN, PST 9am-5pm)
- UK: +44 20 8068 2023 (EN, CET 10am-7pm)
- Germany: +49 32221097297 (DE, CET 10am-7pm)
- Italy: +39 06 9480 3330 (IT, CET 9:30am-12:30am)
- France: +33 176340312 (FR, CET 8am-10am)
- Spain: +34 931786261 (ES, CET 2:30pm-4:30pm)
- Asia: +86 755 8228 1190 / 7741-7746 (CN & EN, BJT 9am-5pm)
- Australia: +61 2 6310 9897 (CN & EN, BJT 9am-5pm)

Self-service Support:

- 100+ Step by step video Guide – youtube.com/avantree/playlists
- 300+ FAQ: support.avantree.com

Content

1. Features & aptX Low Latency	1
2. Product Overview & Package Content	2
3. Power On / Off	3
4. Use as a Transmitter	3
5. Use as a Receiver	5
6. Reconnection	7
7. Get Maximum Stable Range	8
8. Charging	8
9. Using 2 New Saturn Pros as a Pair	10
10. Clear Pairing History	11
11. LED Indicator	12
12. Product Specification	13
13. Declaration of Conformity	14

1. Features & aptX Low Latency

The Avantree New Saturn Pro is a 2-in-1 Bluetooth receiver and transmitter incorporating the latest "aptX Low Latency" codec for high quality Bluetooth audio streaming.

The New Saturn Pro is simple to use and enables any audio device to transmit and receive. For example, it can be used to enable a phone to transmit music to a home stereo system, or to allow a TV to transmit audio to a Bluetooth enabled speaker system or headphones.

With its low latency codec, the New Saturn Pro is suitable for online gaming, TV audio transmission, real-time music recording, etc.

aptX® Low Latency

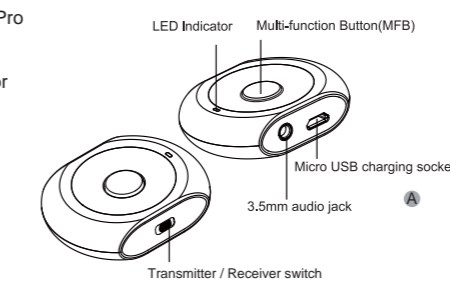
To take advantage of the better performance of the aptX Low Latency Codec, Bluetooth device must support the same codec. If the Bluetooth device only supports the standard aptX codec, or the SBC one, those codecs will be used instead.

Headphones/receiver support -	The audio delay will be
aptX Low Latency codec	~ 40ms
aptX codec	~ 70ms
SBC codec (most standard Bluetooth audio)	~ 220ms

- 1 -

2. Product Overview & Package Content

- A. Avantree New Saturn Pro
- B. 3.5mm audio cable
- C. RCA audio cable
- D. 3.5mm audio connector
- E. USB charging cable
- F. User manual
- G. Quick guide
- H. Warranty card



- 2 -

3. Power On / Off

Firstly, please ensure the New Saturn Pro is off, then push the switch button to the mode (Transmitter or Receiver) that you want.

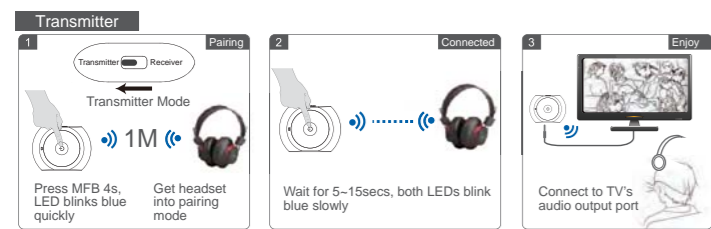
Turn On: Press and hold the MFB button for about 2 seconds until the blue LED is on for 1 second.

Turn Off: Press and hold the MFB button for about 2 seconds until the red LED is on for 1 second and then goes off.

4. Use as a Transmitter

Before pairing, please make sure your Bluetooth receiver device supports true stereo audio (such as Bluetooth stereo headset Avantree Audition Pro or Bluetooth speaker Torpedo Plus).

- 3 -



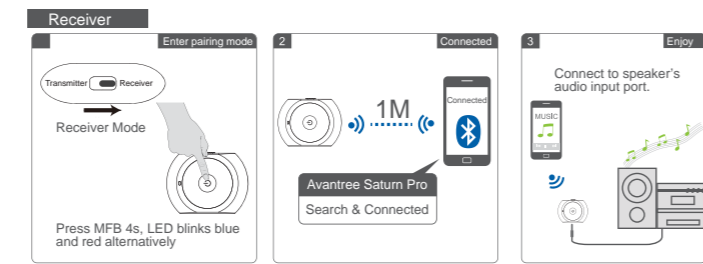
- Ensure New Saturn Pro is off, then slide the switch button to Transmitter mode.
- Put New Saturn Pro into pairing mode by pressing and holding the MFB for around 4-6 seconds until LED flashes blue rapidly.
- Put your Bluetooth headphones/speaker/other receiving device into pairing mode.
- Keep them within 1 meter, wait until LEDs lights BLUE for 1 second.
- Connect New Saturn Pro to the audio output port of the audio source such as your TV, iPod etc. via the audio cable.

- 4 -

NOTE:

- During pairing mode, New Saturn Pro will turn off if no devices can be paired and connected within 3 minutes.
- When you change Transmitter or Receiver mode running on battery, New Saturn Pro will automatically power off. Please restart it manually for use.
- When you need to pair another device, please turn off the device first, then choose the mode you need.

5. Use as a Receiver



- 5 -

- Ensure New Saturn Pro is off, then slide the switch button to Receiver mode.
- Put New Saturn Pro into pairing mode by pressing and holding the MFB for around 4-6 seconds until Blue and Red LED light flashes alternatively.
- Enable Bluetooth on your smartphone / tablet / notebook, search for 'Avantree Saturn Pro', and click 'connect'. (E.g. iPhone: tap 'Settings' → 'Bluetooth' → 'On')
- Connect New Saturn Pro to the audio input port of home hi-fi stereo system via the included 3.5mm audio cable.

NOTE:

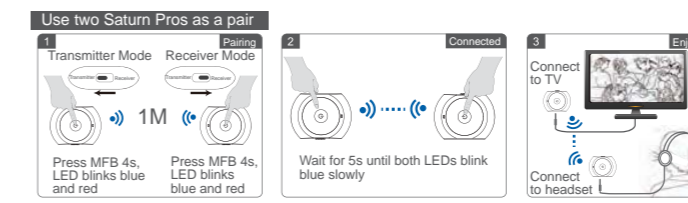
- The pairing mode will last 3 minutes. The receiver will turn off if no devices can be connected within 3 minutes.
- Please do not change Transmitter or Receiver mode after powering on New Saturn Pro. When you need to pair another device, please turn off the device first, then choose the mode you need.
- When New Saturn Pro is used as a receiver, you can short press MFB to control pause/play of music.

- 6 -

6. Using 2 New Saturn Pros as a Pair

- Put one New Saturn Pro into Transmitter Mode, press and hold MFB button until LED flashes blue rapidly.
- Put another New Saturn Pro into Receiver Mode, press and hold MFB button until LED flashes red and blue alternatively.
- Keep them within 1 meter and wait for around 5-7 seconds, until the LED lights on BLUE 1 second, which indicates a successful connection.
- Connect the transmitter to an audio source such as a TV or MP3 player and the receiver to the receiving device, such as a speaker or headphones.

NOTE: If you always use them as a pair, we have a pre-paired set for you, which is truly plug & play. Please search "Avantree Lock" for it.



- 7 -

7. Reconnection

Once powered on, New Saturn Pro will reconnect with the last connected device automatically within 5 seconds. If not, you can press the MFB once to stimulate the process.

NOTE:

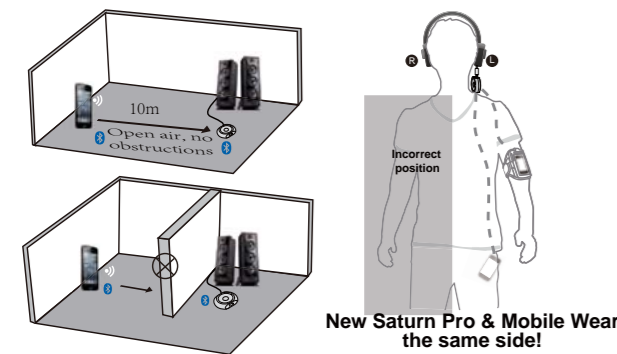
When it is NOT charging, New Saturn Pro will automatically power off if no devices can be connected within 30 minutes.

8. Get Maximum Stable Range.

Please make sure there are no obstacles between receiver and transmitter, and place the two devices on the same side of your body if you are wearing them.

- 8 -

How to get the maximum range Best Result

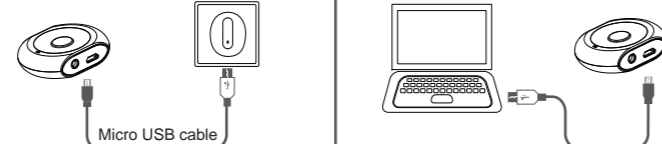


- 9 -

9. Charging

When the LED flashes red, you should recharge the device. It normally takes about 2 hours to fully charge the battery. The LED will stay red when charging and will turn off when charging is complete.

Charging requirement:
You can connect New Saturn Pro via the supplied micro USB cable to your own USB chargers (wall charger/travel charger/car charger, etc.) with 5V/500mA-1A or PC USB port. It's ok to use most mobile phone chargers on the market.



Charge from a wall charger

Charge from PC

- 10 -

10. Clear Pairing History

You may need to clear pairing history of New Saturn Pro if it is not working as expected. After that, all the paired devices information under BOTH transmitter and receiver mode will be erased.

Step 1. Ensure New Saturn Pro is in PAIRING MODE - While off, press MFB for 4-6 seconds until you see the LED flash BLUE rapidly OR the LED flash BLUE and RED alternately.

Step 2. When in pairing mode, double click MFB, LED flashes BLUE and RED simultaneously (like PINK) for about 2 seconds.

- 11 -

11. LED Indicator

Status	LED indicator
Pairing mode under Transmitter mode. Lasts for 3 minutes	LED flashes BLUE rapidly
Pairing mode under Receiver mode. Lasts for 3 minutes	LED flashes BLUE then RED alternatively
Standby mode. Not connected to any other device	LED flashes BLUE once every second
Device connected with SBC codec	LED flashes BLUE twice every 5 seconds
Device connected with aptX codec	LED flashes WHITE once every 5 seconds
Device connected with aptX LOW LATENCY codec	LED flashes WHITE twice every 5 seconds
Low battery	LED flashes RED

- 12 -

12. Product Specification

- Bluetooth 3.0+EDR
- Bluetooth profile: A2DP and AVRCP (Receiver mode ONLY)
- Audio codec: aptX-LL, aptX, SBC
- Operating Range: Class 2, 10 meters
- Transmitter mode working time: up to 9 hours
- Receiver mode working time: up to 8 hours
- Standby time: up to 250 hours
- Charging time: around 2-3 hours
- Charging input voltage: DC 5V
- Battery: 270mAh rechargeable Li-ion battery
- Weight: Approx. 20g

NOTE:

The working and standby times may vary when used with different mobile phones or other compatible Bluetooth devices, usage settings, usage styles and environments.

- 13 -

13. Declaration of Conformity

FCC:
This device complies with part 15 of the FCC Rules. Operation is subject to the condition that this device does not cause harmful interference (1) this device may not cause harmful interference, and (2) this device must accept any interference received, including interference that may cause undesired operation. Changes or modifications not expressly approved by the party responsible for compliance could void the user's authority to operate the equipment.

NOTE: This equipment has been tested and found to comply with the limits for a Class B digital device, pursuant to Part 15 of the FCC Rules. These limits are

- 14 -

designed to provide reasonable protection against harmful interference in a residential installation. This equipment generates, uses and can radiate radio frequency energy and, if not installed and used in accordance with the instructions, may cause harmful interference to radio communications. However, there is no guarantee that interference will not occur in a particular installation. If this equipment does cause harmful interference to radio or television reception, which can be corrected by turning the equipment off and on, the user is encouraged to try to correct the interference by one or more of the following measures:
 - Reorient or relocate the receiving antenna.
 - Increase the separation between the equipment and receiver.
 - Connect the equipment into an outlet on a circuit different from that to which the receiver is connected.
 - Consult the dealer or an experienced radio/TV technician for help.
 FCC ID: 2A1TF-BTTC-200L
 To maintain compliance with FCC's RF Exposure guidelines, This equipment should be installed and operated with minimum distance between 20cm the radiator your body. Use only the supplied antenna.

- 15 -



- 16 -