

# User Manual

## Avantree Audikast

### aptX Low Latency Wireless Transmitter

[www.avantree.com](http://www.avantree.com)

Any questions? Contact:

**Support@avantree.com** (Response Time: 4-24h, excl. holidays)

#### Telephone Support (Mon-Fri):

- USA / CANADA +1 800 232 2078 (EN, PST 9am-5pm)
- UK: +44 20 8068 2023 (EN, CET 10am-7pm)
- Germany: +49 32221097297 (DE, CET 10am-7pm)
- Italy: +39 06 9480 3330 (IT, CET 9:30am-12:30am)
- France: +33 176340312 (FR, CET 8am-10am)
- Spain: +34 931786261 (ES, CET 2:30pm-4:30pm)
- Asia: +86 755 8228 1190 / 7741-7746 (CN & EN, BJT 9am-5pm)
- Australia: +61 2 8310 9897 (CN & EN, BJT 9am-5pm)

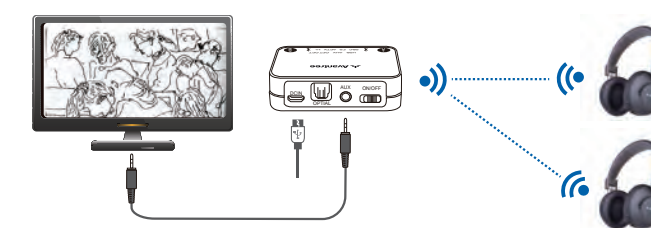
#### Self-service Support:

- 100+ Step by step video Guide – [youtube.com/avantree/playlists](http://youtube.com/avantree/playlists)
- 300+ FAQ: [support.avantree.com](http://support.avantree.com)

1. Features & Qualcomm® aptX™ Low Latency	1
2. What's in the box	4
3. Product Overview and Basic Operation	4
4. LED Indicators	7
5. Pair and Connect to 1st Bluetooth Headphones/Speakers	9
6. Pair and Connect to 2nd Bluetooth Headphones/Speakers	9
7. Re-connection	10
8. Connect The Audikast to an Audio Source	10
9. Clear Paired History of the Audikast	16
10. Product Specifications	17
11. Declaration of Conformity	18

## 1. Features & Qualcomm® aptX™ Low Latency:

Avantree Audikast (TC418) is a Bluetooth audio transmitter that wirelessly streams audio signal from your audio source, e.g. TV, to Bluetooth audio receivers, e.g. Bluetooth headphones/speakers.



- 1 -

### Qualcomm® aptX™ Low Latency

Avantree Audikast adopts aptX Low Latency technology, which ensures the sound is delivered in sync with visual media, it significantly reduces delay and brings on a high quality and synchronised user experience, especially ideal for watching TV/movies/videos.

#### Audio delay under different codec :

Codec	Audio delay
aptX Low Latency (aptX LL)	≤40ms, not detectable by human ears
aptX	≤130ms
Fast Stream (FS)	≤40ms, not detectable by human ears
The most standard Bluetooth codec ( SBC )	≤220ms

- 2 -

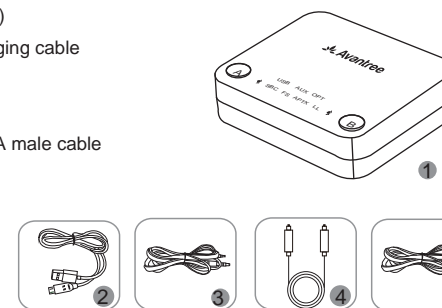
### Dual link codec

Under Dual Link Mode (connecting with 2 headphones/receivers simultaneously), the transmission codec will be the one with longer latency, eg: If one device supports aptX LL and the other only supports aptX, then the final transmission codec will be aptX. If both headphones supports aptX LL, the final transmission codec will be aptX LL.

- 3 -

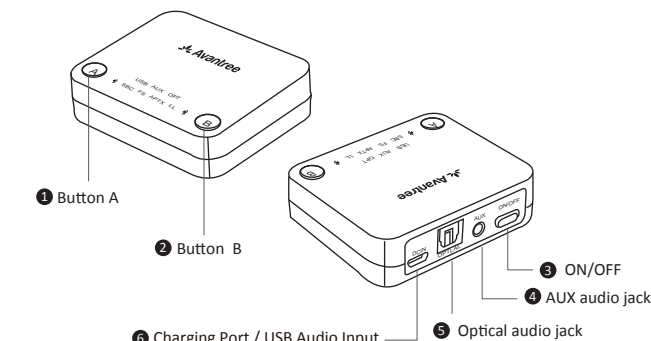
## 2. What's in the box:

1. The Audikast (TC418)
2. Micro USB data/charging cable
3. 3.5mm audio cable
4. Optical audio cable
5. 3.5mm female to RCA male cable
6. User manual
7. Quick user guide
8. Contact card



- 4 -

## 3. Product Overview and Basic Operation

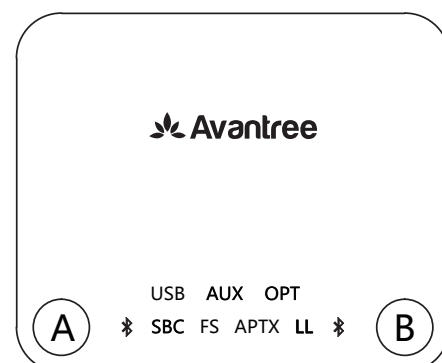


- 5 -

COMPONENT	FUNCTION	OPERATION
On/off switch	Power on/off Audikast	Slide the on/off switch to "on" or "off" position.
(A)	Set A into pairing mode	After power on, press and hold (A) for 1 second, (A) flashes RED and BLUE alternately.
(B)	Set B into pairing mode	After power on, press and hold (B) for 1 second, (B) flashes RED and BLUE alternately.
(A & B)	Clear paired history	After power on, press and hold (A) and (B) together for 7 seconds, BOTH (A) and (B) is on BLUE for 2s.

- 6 -

## 4. LED Indicators



- 7 -

### INDICATOR STATUS

INDICATOR	STATUS
Bluetooth Symbol	Power on - Flashes BLUE once per 2s
	Pairing - Flashes RED and BLUE alternately
	Connected - Steady BLUE
	Re-connection - (A) and (B) flashes BLUE once per 2 seconds
SBC	Connected using the SBC codec
	Clear paired history - Both (A) and (B) is on BLUE for 2 seconds
FS	Connected using the Fast-stream codec
APTX	Connected using the aptX codec
LL	Connected using the aptX Low Latency codec
USB	USB audio input selected (USB data/charging cable is plugged in and activated)
AUX	AUX input selected (3.5mm audio cable is plugged in)
OPT	Optical input selected (optical cable is plugged in and nothing is plugged into the 3.5mm audio jack)

- 8 -

## 5. Pair and Connect to 1st Bluetooth Headphones/Speakers

- 1) **Power up and turn on the Audikast** - connect it to USB charger by included micro USB data/charging cable, slide the on/off switch to the "on" position.
- 2) **Enter the Audikast into pairing mode** - on first use, the Audikast will enter pairing mode automatically, (A) close to (A) flashes RED and BLUE alternately.
- 3) **Enter your headphones/receiver into PAIRING MODE** - please refer to your product user manual.
- 4) **Connecting** - During the pairing process, keep the devices close to each other and wait. Once connected, the (A) close to (A) will turn BLUE.

## 6. Pair and Connect to 2nd Bluetooth Headphones/speakers

- 1) **Pair and connect 1st headphones to the Audikast** - please refer to above point 5.
- 2) **Enter the Audikast into PAIRING MODE** - press and hold (B) for 1 second until (B) close to (B) flashes RED and BLUE alternately.

- 9 -

- 3) **Enter the 2nd headphones into PAIRING MODE** - please refer to your product user manual.
- 4) **Connecting** - During the pairing process, keep the devices close to each other and wait. Once connected, the (B) close to (B) will turn BLUE.

## 7. Re-connection.

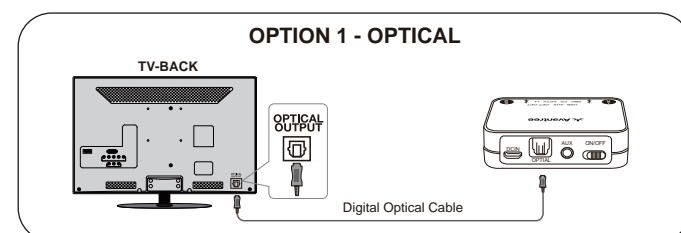
Normally, once paired, Audikast will auto re-connect to last 2 paired headphones / speakers within 5-10 seconds after turned on. If not, please clear paired history of BOTH Audikast (refer to **Point 9**) and your headphones/speakers (refer to their own user manual), then re-pair them with Audikast again (refer to **Point 5** and **Point 6**).

## 8. Connect The Audikast to an Audio Source

The Audikast supports **OPTICAL** audio input and **ANALOG** audio input (3.5mm / RCA audio jack).

- 10 -

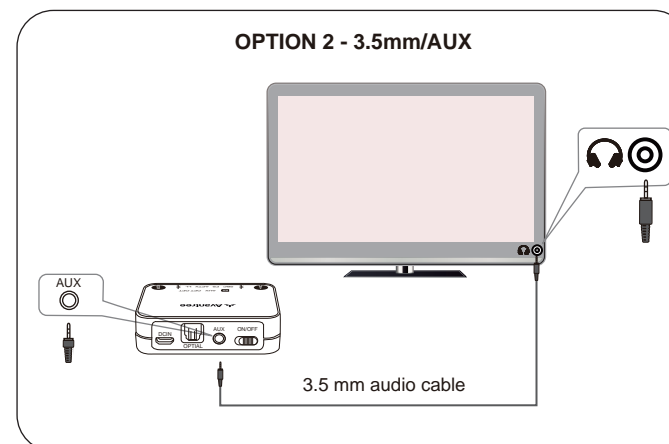
- 1) Ensure you find the CORRECT audio output, you can plug in a pair of wired headphones/earbuds into your audio source's audio output to check if it works.
- 2) Ensure your TV audio is set to "External Speaker".



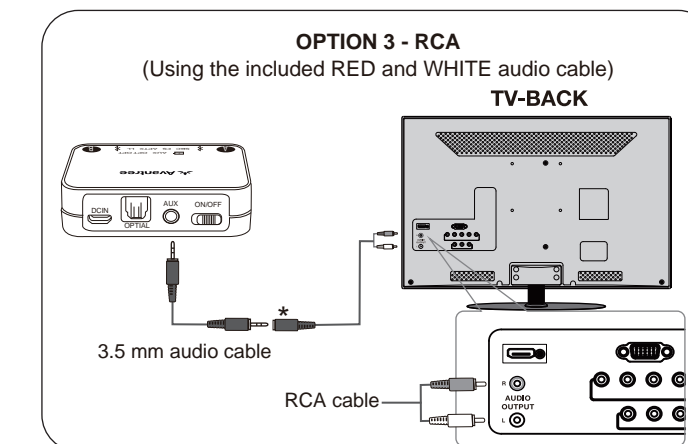
#### Notes:

- 1) Make sure your TV audio is set to PCM format as the Audikast supports PCM optical format ≤ 16bit/48KHz but no Dolby/DTS format.
- 2) Unplug the 3.5mm audio cable, or Audikast will work under AUX mode.

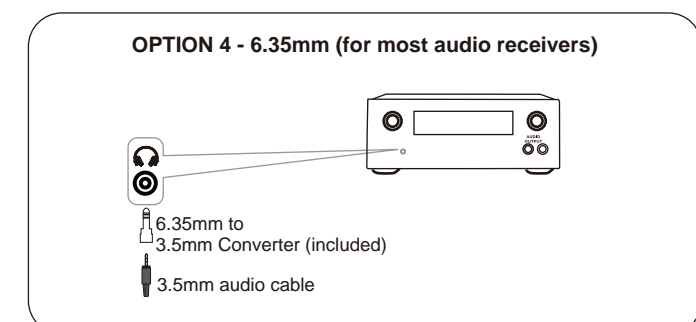
- 11 -



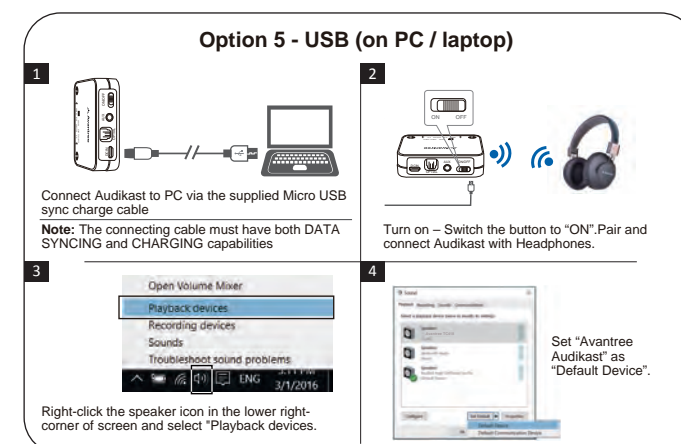
- 12 -



- 13 -



- 14 -



- 15 -

## 9. Clear Paired History of the Audikast

You may need to clear paired history of the Audikast if it is not working as expected, such as not reconnecting, continuous loose connection, short work range and etc.

#### Please follow following to clear paired history of the Audikast:

After power on, press and hold BOTH (A) and (B) together for 7 seconds, both (A) and (B) will be on BLUE for 2 seconds, then (A) enter pairing mode automatically, (A) close to (A) flashes RED and BLUE alternately.

- 16 -

## 10. Product Specifications

- Bluetooth version: 4.2
- Bluetooth profile: A2DP, AVRCP, HFP
- Audio codec: aptX LL, aptX, Fast Stream, SBC
- Operation range: Class 1, up to 100ft/30m
- Weight: body approx. 55g
- Size: 67mm X 56mm X 17mm

- 17 -

## 11. Declaration of Conformity

This device complies with the essential requirements and other relevant provisions of Directive 1999/5/EC.

This device complies with part 15 of the FCC Rules. Operation is subject to the condition that this device does not cause harmful interference (1) this device may not cause harmful interference, and (2) this device must accept any interference received, including interference that may cause undesired operation. Changes or modifications not expressly approved by the party responsible for compliance could void the user's authority to operate the equipment.

#### NOTE:

changes or modifications not expressly approved by the party responsible for compliance could void the user's authority to operate the equipment.

This equipment has been tested and found to comply with the limits for a Class B digital device, pursuant to Part 15 of the FCC Rules. These limits are designed to

provide reasonable protection against harmful interference in a residential installation. This equipment generates, uses and can radiate radio frequency energy and, if not installed and used in accordance with the instructions, may cause harmful interference to radio communications. However, there is no guarantee that interference will not occur in a particular installation.

If this equipment does cause harmful interference to radio or television reception, which can be determined by turning the equipment off and on, the user is encouraged to try to correct the interference by one or more of the following measures:

- Reorient or relocate the receiving antenna.
  - Increase the separation between the equipment and receiver.
  - Connect the equipment into an outlet on a circuit different from that to which the receiver is connected.
  - Consult the dealer or an experienced radio/TV technician for help.
- This device complies with FCC RF radiation exposure limits set forth for an uncontrolled environment. This transmitter must not be co-located or operating in conjunction with any other antenna or transmitter.

FCC ID: 2A1TF-BTTC-418

- 19 -

Dispose of the packaging and this product in accordance with the latest provisions.



FCC ID: 2A1TF-BTTC-418

- 20 -

- 18 -